

# Lakeland Joint School District #272

15506 N. Washington St.  
Rathdrum, ID 83858  
208-687-0431



**LJSD Vision: A community committed to academic excellence ...  
dedicated to student success.**

---

## **Board Action Item Request**

**AGENDA ITEM:** Approve/Deny Bids for THS Fieldhouse Project

**MEETING DATE:** April 29, 2026

**PREPARED BY:** Jessica Grantham, Ryne Eberlin

---

### **INFORMATIONAL SUMMARY:**

Bids for the previously approved THS Fieldhouse project were solicited in accordance with Idaho procurement statutes and facilitated by Architects West. Multiple qualified bids were received, as detailed in the attached tabulation.

The lowest responsible bidder was Dardan Enterprises, with a base bid of \$809,447.

### **FISCAL IMPACT:**

THS Principal Ryne Eberlin has successfully fundraised sufficient funds to cover the full base bid as well as the two bid alternates. This funding is on hand in Fund 231. There will be no impact on the District's General Fund.

### **RECOMMENDATION:**

We recommend approval of the bid to Dardan Enterprises for \$809,477, plus selected alternates as supported by the available funds.

### **ATTACHMENTS:**

- Bid Tabulation Sheet
- Bid Packages/Drawings

**Timberlake High School Field House  
Bid Results  
Base Bid - April 16, 2026; 3:00 p.m. local time**

<b>Bidder:</b>	<b>Dardan Enterprises</b>			<b>Halme Builders</b>			<b>J. Addington</b>			<b>National Native American Construction</b>			<b>Swinerton Builders</b>		
<b>Base Bid</b>	<b>\$809,447.00</b>			<b>\$1,250,000.00</b>			<b>\$891,885.00</b>			<b>\$1,011,000.00</b>			<b>\$821,000.00</b>		
<b>Alt. #1: Reinforced Concrete Floor Slab</b>	<b>\$42,900.00</b>			<b>\$50,000.00</b>			<b>\$55,100.00</b>			<b>\$64,245.00</b>			<b>\$63,770.00</b>		
<b>Alt. #2: Cantilever Canopy</b>	<b>\$12,000.00</b>			<b>\$20,000.00</b>			<b>\$9,430.00</b>			<b>\$11,791.00</b>			<b>\$10,200.00</b>		
<b>Addenda</b>	<b>1</b>	<b>2</b>	<b>3</b>	<b>1</b>	<b>2</b>	<b>3</b>	<b>1</b>	<b>2</b>	<b>3</b>	<b>1</b>	<b>2</b>	<b>3</b>	<b>1</b>	<b>2</b>	<b>3</b>
<b>Bid Bond</b>	<b>✓</b>			<b>✓</b>			<b>✓</b>			<b>✓</b>			<b>✓</b>		
<b>Plumbing Subcontractor</b>	<b>N/A</b>			<b>N/A</b>			<b>N/A</b>			<b>N/A</b>			<b>N/A</b>		
<b>HVAC Subcontractor</b>	<b>N/A</b>			<b>N/A</b>			<b>N/A</b>			<b>N/A</b>			<b>N/A</b>		
<b>Electrical Subcontractor</b>	<b>N/A</b>			<b>N/A</b>			<b>N/A</b>			<b>N/A</b>			<b>N/A</b>		
<b>In-Kind/Donated Good/Services Value</b>	<b>\$10,000.00</b>			<b>N/A</b>			<b>\$10,647.00</b>			<b>N/A</b>			<b>N/A</b>		

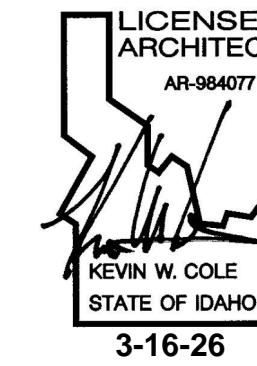
Bids are under advisement.

# TIMBERLAKE HIGH SCHOOL

## FIELD HOUSE

5973 ID-54, SPIRIT LAKE, IDAHO 83869

JOB NUMBER: 25016



03/16/2026  
DATE

BID  
PROJECT PHASE

### PROJECT CONTACTS

#### OWNER

TIMBERLAKE HIGH SCHOOL (LAKELAND JOINT SCHOOL DISTRICT)  
5973 ID-54 Phone: 503.473.7681  
SPIRIT LAKE, IDAHO 83869 Email: tim.haag@lakeland272.org  
TIM HAAG

#### ARCHITECT OF RECORD

ARCHITECTS WEST  
210 E Lakeside Ave Phone: 208.667.9402  
Coeur d'Alene, Idaho 83814 Email: kevin@architectswest.com  
Kevin Cole

Phone:  
Email:

Phone:  
Email:

Phone:  
Email:

Phone:  
Email:

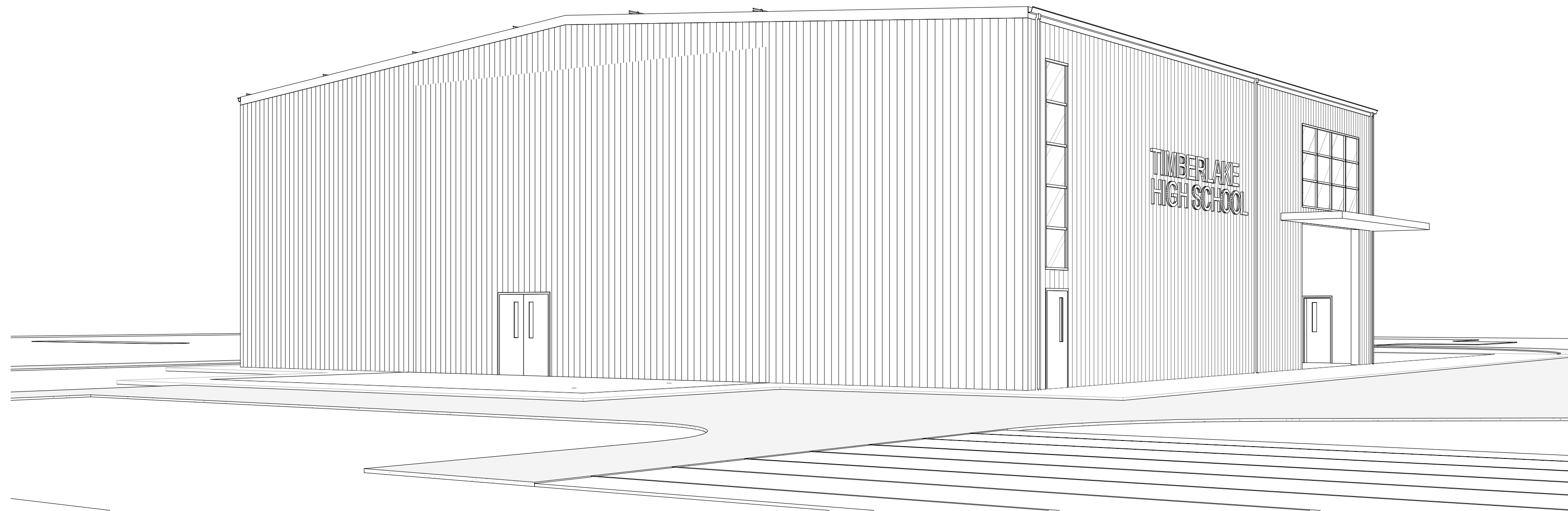
Phone:  
Email:

Phone:  
Email:

Phone:  
Email:

Phone:  
Email:

Phone:  
Email:



### DRAWING INDEX

#### GENERAL

- A0.00 COVER SHEET
- A0.01 ABBREVIATIONS AND SYMBOLS
- A1.01 CODE ANALYSIS

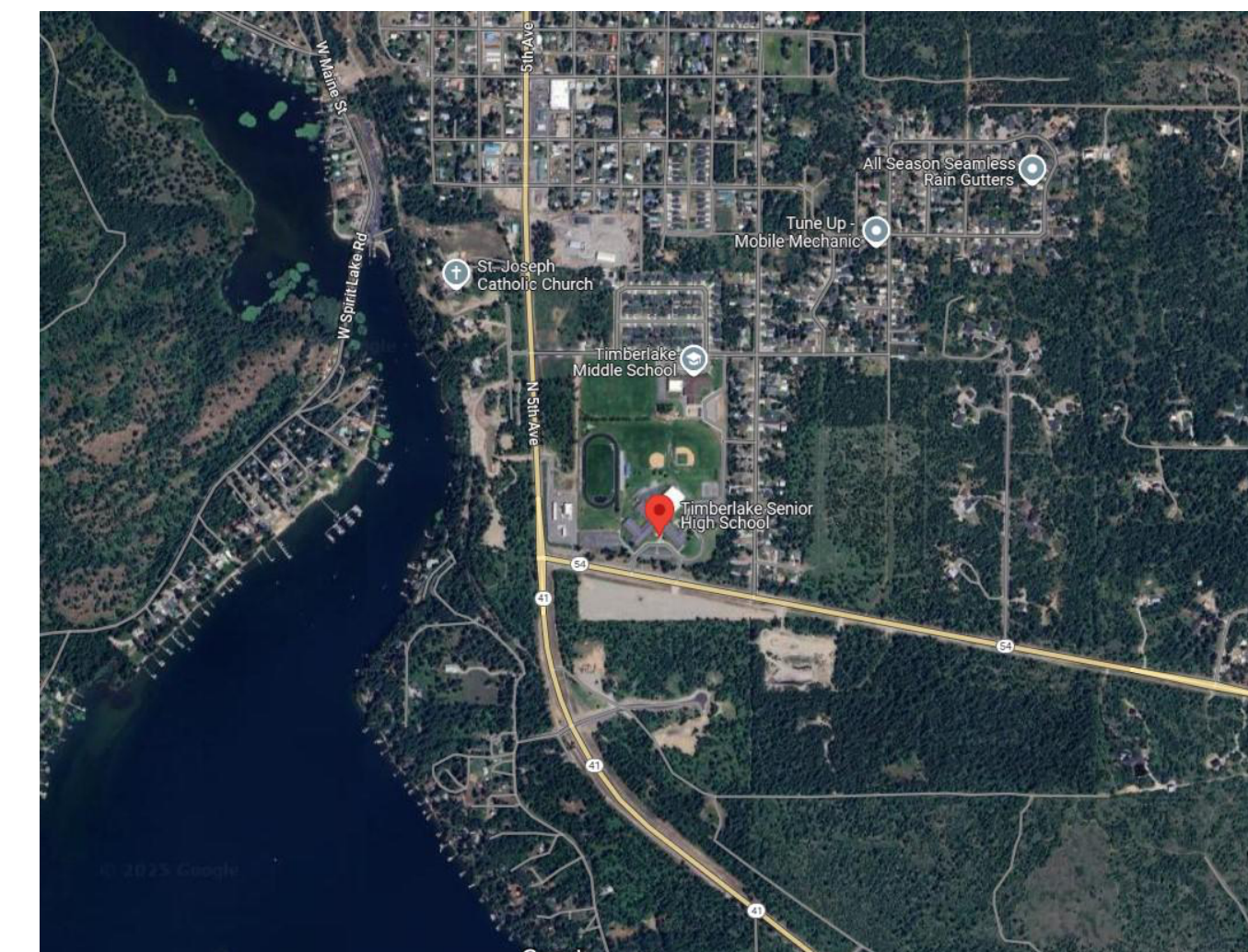
#### LANDSCAPE

- L1.10 DEMOLITION PLAN
- L1.20 LAYOUT PLAN
- L1.30 GRADING PLAN
- L1.40 SITE DETAILS

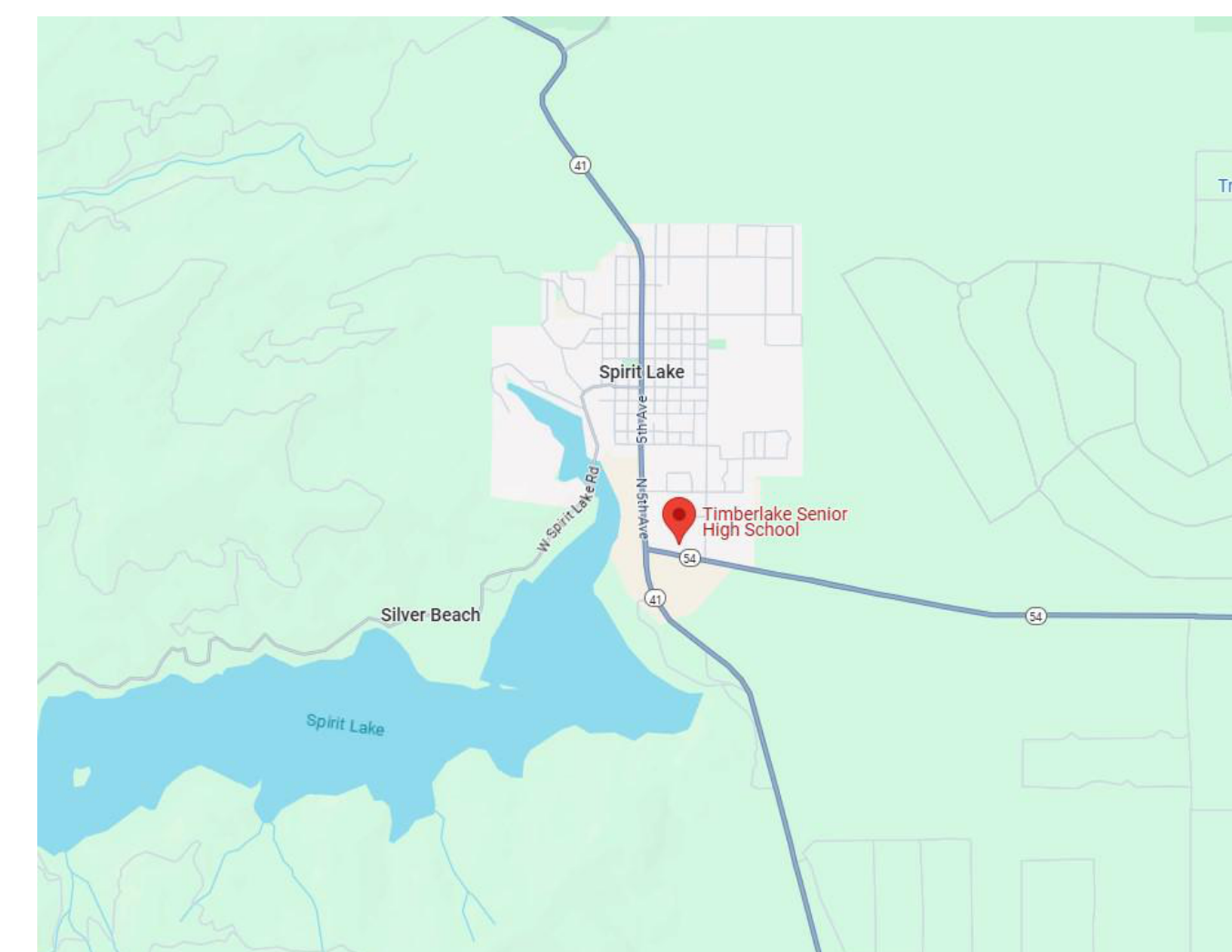
#### ARCHITECTURAL

- A2.01 FLOOR PLAN
- A3.01 EXTERIOR ELEVATIONS
- A4.01 BUILDING SECTIONS
- A6.01 REFLECTED CEILING PLAN
- A7.01 ROOF PLAN
- A8.00 TYPICAL MOUNTING HEIGHTS
- A8.01 INTERIOR ELEVATIONS
- A8.02 INTERIOR ELEVATIONS
- A10.00 TYPES & SCHEDULES
- A10.40 EXTERIOR ENVELOPE DETAILS
- A10.41 EXTERIOR ENVELOPE DETAILS
- ME2.01 MEP CONCEPTUAL PLAN
- S1 FOUNDATION PLAN
- S2 GENERAL STRUCTURAL NOTES

### SITE MAP



### VICINITY MAP



### DRAWING KEYNOTING SYSTEM

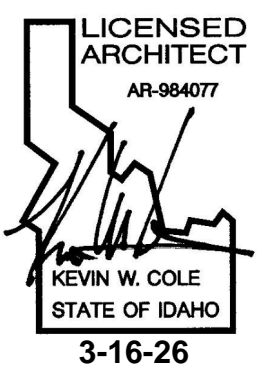
A KEYNOTING SYSTEM IS USED ON THE DRAWINGS FOR MATERIAL REFERENCES AND NOTES. REFER TO THE KEYNOTE LEGEND ON THE DRAWINGS FOR THE INFORMATION WHICH RELATES TO EACH KEYNOTE SYMBOL ON THE RESPECTIVE DRAWINGS. EACH KEYNOTE SYMBOL CONSISTS OF A 6-DIGIT NUMBER FOLLOWED BY A PERIOD AND A LETTER SUFFIX. THE 6-DIGIT NUMBER RELATES TO THE SPECIFICATION WHICH GENERALLY COVERS THE ITEM THAT IS REFERENCED AND THE LETTER SUFFIX COMBINED WITH THE 6-DIGIT NUMBER AND PERIOD, CREATES A KEYNOTE SYMBOL WHICH IDENTIFIES THE SPECIFIC REFERENCE NOTATION USED ON THE DRAWINGS. THE SUFFIX DOES NOT RELATE TO ANY CORRESPONDING REFERENCE LETTER IN THE SPECIFICATIONS. THE ORGANIZATION OF THE KEYNOTING SYSTEM ON THE DRAWINGS, WITH THE KEYNOTE REFERENCE NUMBERS RELATED TO THE SPECIFICATIONS SECTIONS NUMBERING SYSTEM, SHALL NOT CONTROL THE CONTRACTOR IN DIVIDING THE WORK AMONG SUBCONTRACTORS OR IN ESTABLISHING THE EXTENT OF WORK TO BE PERFORMED BY ANY TRADE.

### DEFERRED SUBMITTALS

1. FIRE ALARM SHOP DRAWINGS
2. PRE ENGINEERED METAL BUILDING SYSTEM (PEMB)
3. FOUNDATION BY PEMB

A0.00





**Architects West**  
 210 E Lakeside Ave  
 Coeur d'Alene, ID 83814  
 t. 208.667.9402  
 architectswest.com

### CODE ANALYSIS

**BUILDING AREAS:**  
 ALL  
**OCCUPANCY:**  
 E  
**CONSTRUCTION TYPE:**  
 II-B, NOT SPRINKLED

**FIRE RESISTANCE RATING REQUIREMENTS:**  
 TABLE 601 BUILDING ELEMENTS: NR  
 TABLE 602 EXTERIOR ELEMENTS: 1 HR < 1'-0" NR ELSEWHERE

**OPENINGS IN EXTERIOR WALLS:**  
 TABLE 705.8: WORST CASE: NO LIMIT > 30'-0"

**ALLOWABLE HEIGHT:**  
 TABLE 503 BASIC: 35'-0" (31'-2" Actual)

**REQUIRED FIRE FLOW - IFC 2009:**  
 TABLE 503 NUMBER OF STORIES: 2 (ACTUAL: 1)  
 ALLOWABLE BUILDING AREA NEW CONST. TYPE II-B:  
 TABLE 503 BASIC: 14,500 SF Allowed  
 11,600 SF Actual

**REQUIRED FIRE FLOW - IFC 2009:**  
 TOTAL FIRE AREA: 11,600 SF (INCLUSIVE OF BID ALT.)  
 TABLE B105.1 2250 GPM

### ENERGY CODE

2018 IECC:  
 CLIMATE ZONE: 5

**ENVELOPE REQUIREMENTS (METAL BUILDINGS):**  
 (TABLE C402.1.3 AND C402.1.4)  
 ROOF: R19 + R11 LINER SYSTEM (LS) OR EQUIVALENT WITH MAX. U VALUE OF .035  
 WALLS: R13 + R13 CI (OR EQUIVALENT WITH MAX. U VALUE OF .052  
 FOUND. PERIMETER: R10 CI.

**FENESTRATION (MAX U-VALUES PER C402.4)**  
 FIXED: 0.38  
 DOORS: 0.77  
 SHGC: 0.38 (MOST RESTRICTIVE)

### CODE ANALYSIS LEGEND IBC 2018

OCC GROUP: OCCUPANCY GROUP DESCRIPTION  
 X OCC: OCCUPANCY GROUP  
 123,456 SF: OCCUPANCY GROUP AREA  
 0 OCC: OCCUPANCY COUNT

REQ. CORRIDOR WIDTH: CORRIDOR:  
 0 x 0.20 = 0' REQ'D: 44" MINIMUM PER IBC 1020.2  
 000" PROVIDED

DOOR OPENING WIDTH: EXIT:  
 0 x 0.20 = 0' REQ'D: EXITING WIDTH AND DIRECTION  
 000" OPNG. PROVIDED

#: NUMBER OF OCCUPANTS EXISTING THROUGH DOOR

#>: TOTAL NUMBER OF OCCUPANTS EXITING INTO ADJOINING ROOM OR AREA

#>: TOTAL NUMBER OF OCCUPANTS EXITING THROUGH DESIGNATED EXTERIOR EXITING DOOR

KEY: KNOX BOX VERIFY LOCATION W/ AHJ

[OCC]: OCCUPANT LOAD SIGN

[FAP]: FIRE ALARM PANEL

[BE]: BRAILLE EXIT SIGN

[X]: EXIT SIGN LOCATION

[FE]: FIRE EXTINGUISHER LOCATION

[FEC]: FIRE EXTINGUISHER CABINET LOCATION

250': TABLE 1017.2 MAXIMUM TRAVEL DISTANCE: 250'

75': TABLE 1017.2 MAXIMUM COMMON PATCH OF EGRESS TRAVEL: 75'

### PLUMBING FIXTURE ANALYSIS

OCCUPANCY:  
 IBC 2018 TABLE 2902.1

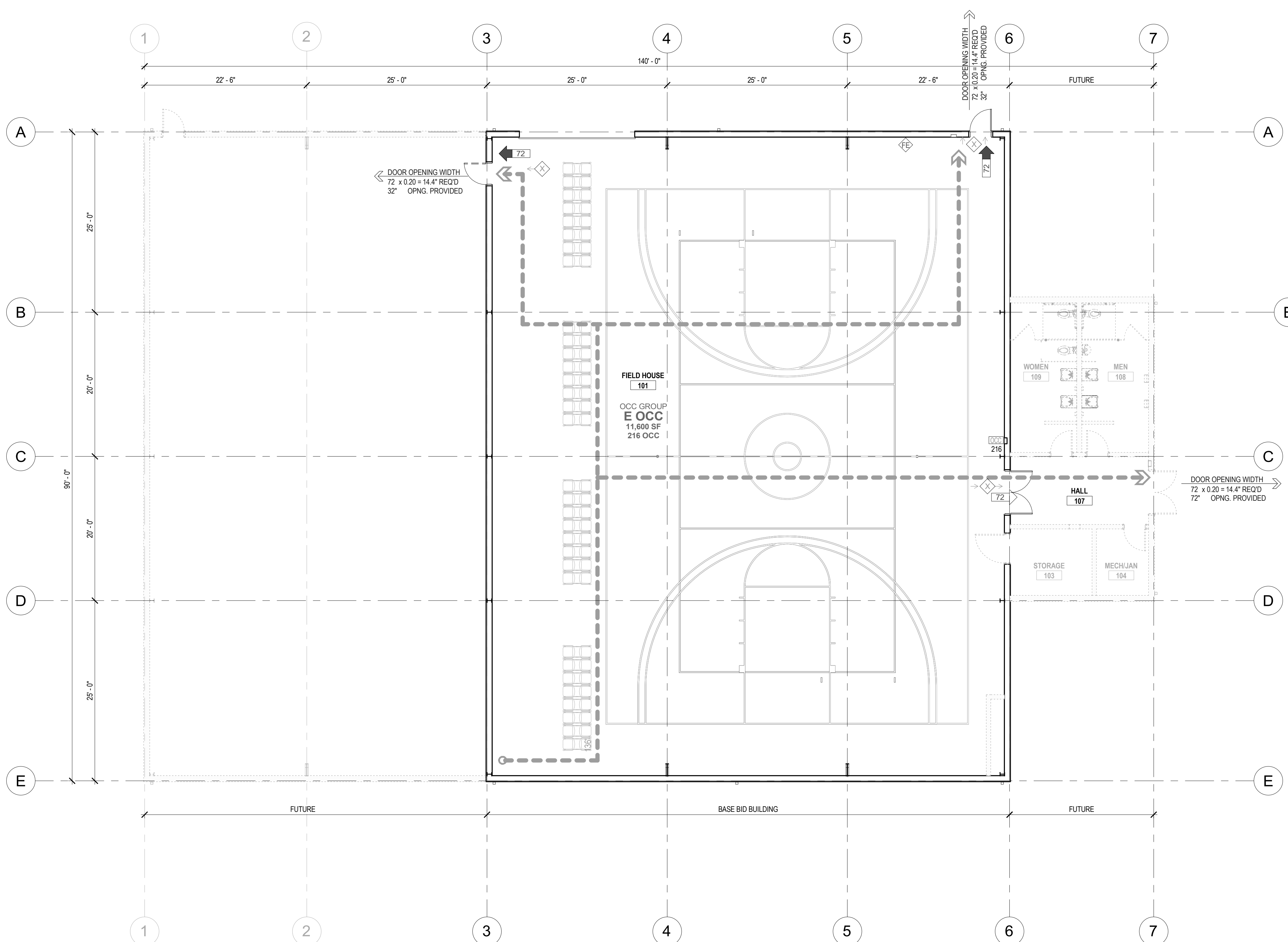
X OCC = 234	108 MALES	108 FEMALES
WATERCLOSETS	1/100 2 REQUIRED 2 PROVIDED	1/65 2 REQUIRED 2 PROVIDED
LAVATORIES	1/200 1 REQUIRED 2 PROVIDED	1/200 1 REQUIRED 2 PROVIDED
SERVICE SINK: DRINKING FOUNTAINS 1/500	1 REQUIRED 1 REQUIRED	1 PROVIDED 1 PROVIDED

- ### GENERAL NOTES
- CONTRACTOR TO PROVIDE WORK SITE SAFETY PLAN IF REQUIRED BY AHJ
  - AT ROOMS CONTAINING FIRE ALARM CONTROL PANEL PROVIDE PANEL SIGN WITH 2 INCH WHITE LETTERINGS ON RED BACKGROUND 'FIRE ALARM CONTROL PANEL'
  - FIRE ALARM SYSTEM TO BE COORDINATE BY GC. PROVIDE DEFERRED SUBMITTAL TO AHJ FOR APPROVAL

**TYPE: A**  
 EXIT  
 QTY 3 (LOCATE 1 AT EA. EGRESS DOOR)

**TYPE: D**  
 MAX OCC LOAD  
 QTY 1 - LOCATE PER BLDG OFFICIAL

ALL SIGNS ABOVE WHITE LETTERS ON BLUE BACKGROUND

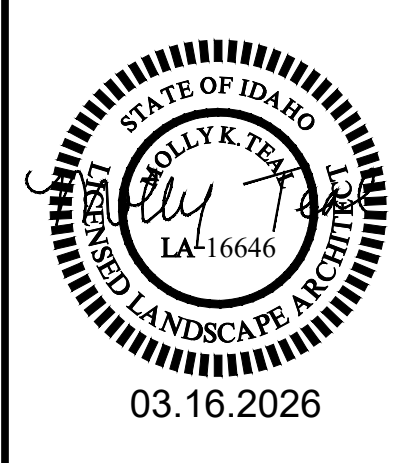


**CODE ANALYSIS PLAN**  
 SCALE: 1/8" = 1'-0"

**TIMBERLAKE HIGH SCHOOL**  
**FIELD HOUSE**  
 5973 ID-54, SPIRIT LAKE, IDAHO 83869  
 CODE ANALYSIS

PROJECT NO.	25016
DESIGNED BY	KC
DRAWN BY	LQ
ISSUE DATE	3-16-26
PHASE	BID
CHECKED BY	BJ
SHEET NO.	A1.01





ARCHITECT  
 ARCHITECTS WEST  
 LANDSCAPE ARCHITECT  
 ARCHITECTS WEST

No.	Description	Date

TIMBERLAKE HIGH SCHOOL  
 FIELD HOUSE  
 5973 ID-54, SPIRIT LAKE, IDAHO 83869  
 LAYOUT PLAN

PROJECT NO.	25016
DESIGNED BY	HC
DRAWN BY	HC
ISSUE DATE	03.16.2026
PHASE	BID
CHECKED BY	MT
REVISION	
SHEET NO.	

L1.20

LEGEND

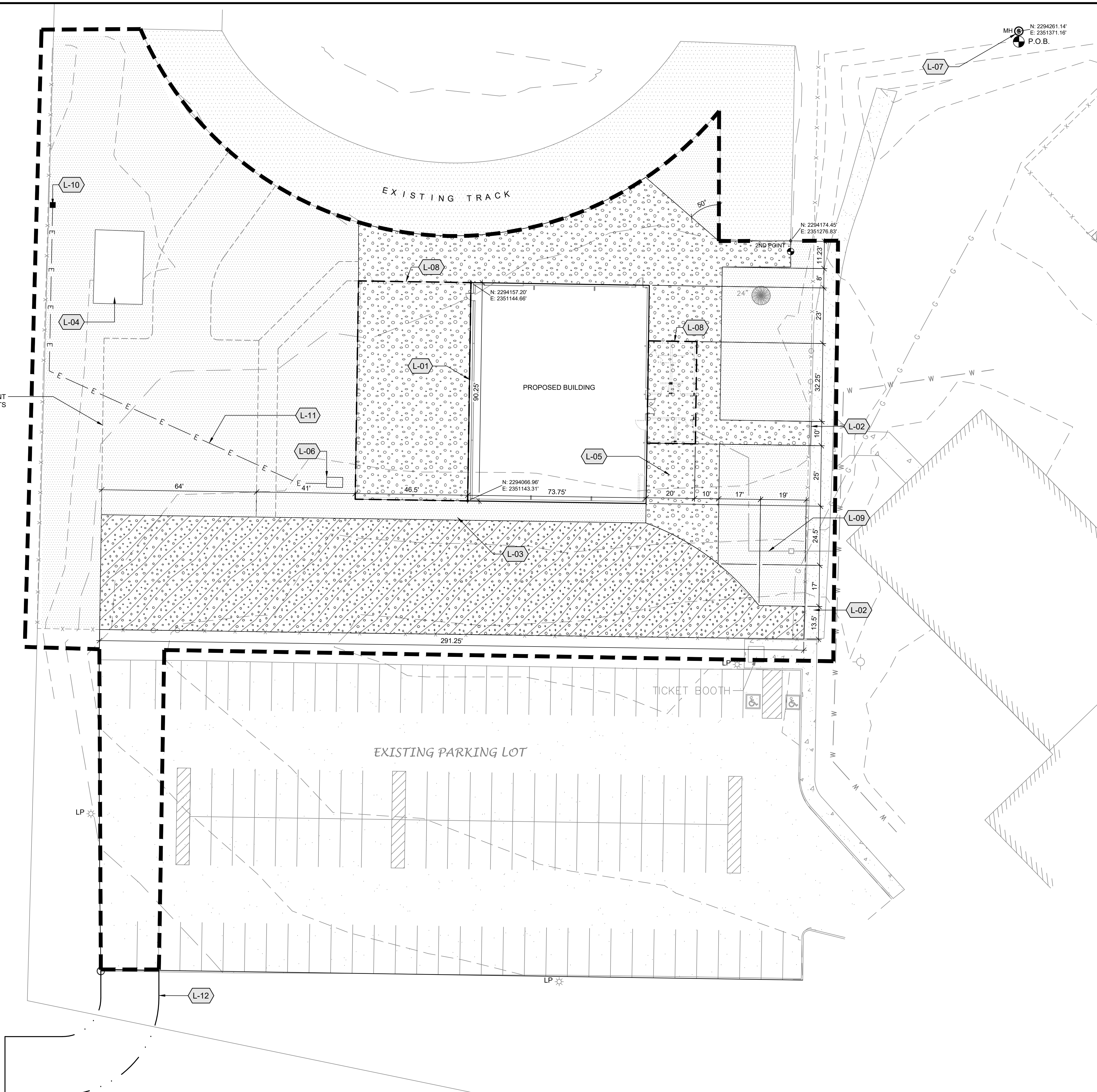
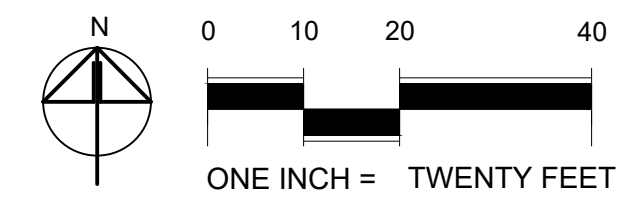
- CONSTRUCTION LIMITS
- PROPOSED POWER
- POINT OF BEGINNING FOR COORDINATE ESTABLISHMENT
- SECOND POINT FOR COORDINATE ESTABLISHMENT
- COORDINATE POINT

GENERAL NOTES

- ESTABLISH SITE LAYOUT GRID FROM POINT OF BEGINNING (P.O.B.) AT CENTER OF EXISTING SEWER MANHOLE, WITH AN ASSUMED COORDINATE AS NOTED ON PLAN (VERIFY). ESTABLISH 2ND POINT AT SOUTHEAST CORNER OF EXISTING TRACK EDGE AT 128.116', S 47° 25' 10.15"W FROM THE P.O.B. WITH AN ASSUMED COORDINATE AS SHOWN (VERIFY).
- REFER CLOSELY TO BUILDING LAYOUT DRAWINGS IN RELATION TO SITE LAYOUT ITEMS. CONTRACTOR TO VERIFY LISTED DIMENSIONS PRIOR TO CONSTRUCTION.
- CONTRACTOR TO VERIFY LOCATION OF ALL UTILITIES PRIOR TO INITIATION OF ANY DEMOLITION OR CONSTRUCTION OPERATIONS. ANY DAMAGE TO EXISTING UTILITIES ON SITE OR ADJACENT PROPERTY SHALL BE CONTRACTOR'S RESPONSIBILITY.
- COORDINATE INSTALLATION OF ELECTRICAL AND IRRIGATION CONDUIT AND SLEEVES WITH RESPECTIVE CONTRACTORS.
- CONTRACTOR IS RESPONSIBLE FOR ALL CONSTRUCTION STAKING.
- ALL DIMENSIONS ARE TO FACE OF CURB, EDGE OF WALK, EDGE OF PAVEMENT, EDGE OF FOUNDATION, EDGE OF WALLS OR CENTER OF POST.
- CONTRACTOR RESPONSIBLE FOR ANY DAMAGE TO NEW OR EXISTING IMPROVEMENTS INCLUDING LANDSCAPE AREAS AS A RESULT OF CONSTRUCTION ACTIVITIES.

LAYOUT KEYED NOTES

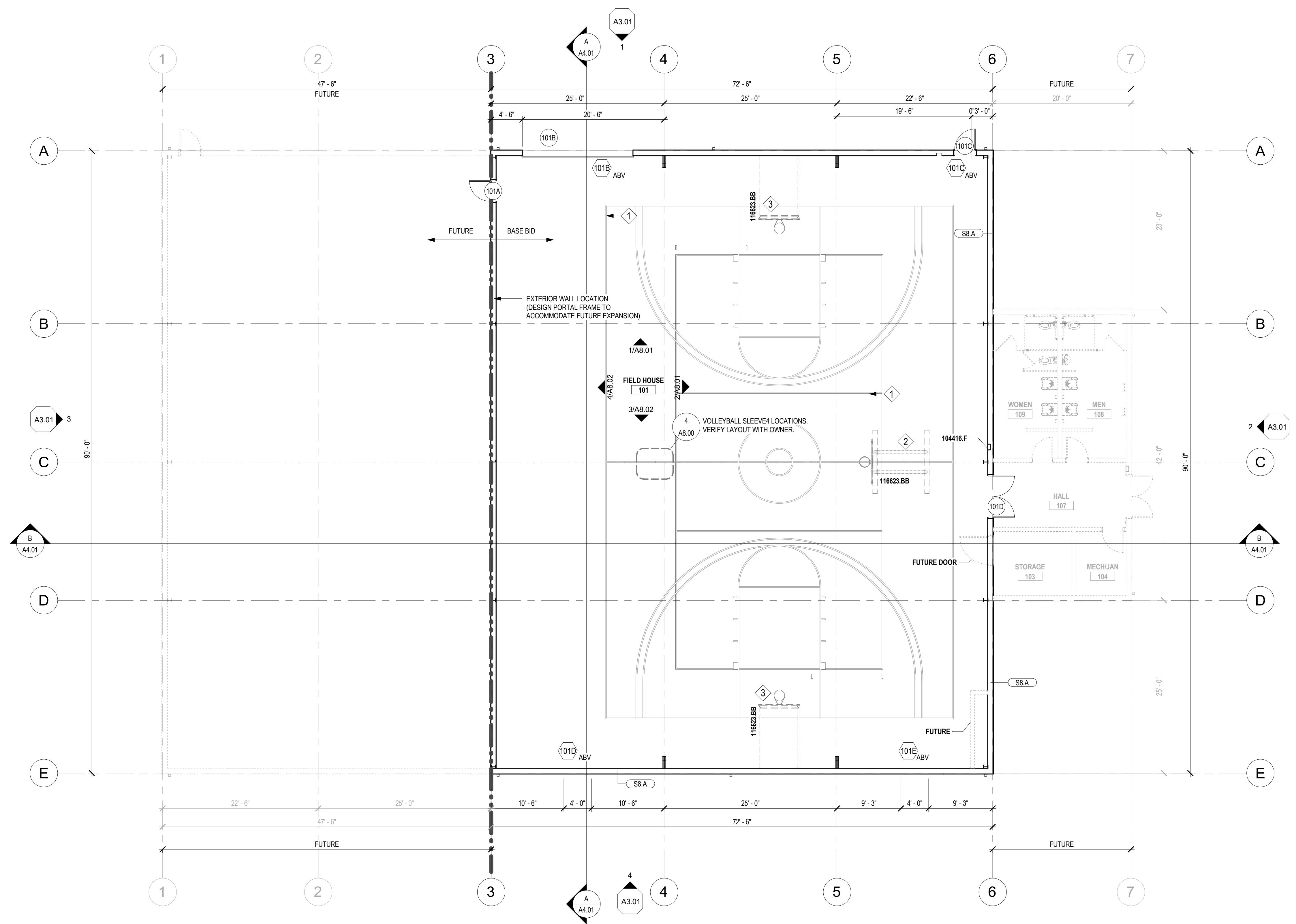
SYMBOL	DESCRIPTION
<b>Layout</b>	
	FIELD HOUSE PER ARCH.
	NEW GRAVEL TO MEET AND MATCH EXISTING WALKWAY.
	FUTURE RETAINING WALL.
	EXISTING SHED BUILDING.
	FUTURE LOCATION OF CONCRETE PAD FOR ROOFTOP UNIT UTILITY.
	PROPOSED TRANSFORMER LOCATION. COORDINATE WITH ELECTRICAL UTILITY.
	EXISTING SEWER MANHOLE.
	FUTURE BUILDING EXPANSION
	PROPOSED LOCATION FOR WATER METER BY OTHERS (N.I.C.)
	POWER CONNECTION BY OTHERS (N.I.C.)
	UNDERGROUND POWER BY OTHERS (N.I.C.)
	GRAVEL DRIVE APPROACH INSTALLED BY OTHERS. CONTRACTOR MAY USE AS PART OF CONSTRUCTION ENTRANCE (EXACT LAYOUT TBD). AT END OF PROJECT, CONTRACTOR TO REMOVE.
	INSTALL 9" GRAVEL BASE COURSE OVER 12" GRANULAR SUBBASE. SEE GRADING PLAN FOR ELEVATIONS AND GEOTECH REPORT FOR MORE INFORMATION.
	INSTALL 6.5" GRAVEL BASE COURSE OVER 8" GRANULAR SUBBASE. SEE GRADING PLAN FOR ELEVATIONS AND GEOTECH REPORT FOR MORE INFORMATION.
	CONTRACTOR TO INSTALL MINIMUM 6 INCHES OF TOPSOIL. OWNER TO SEED OR SOD.



DASHED LINES REPRESENT FUTURE IMPROVEMENTS







**FLOOR PLAN**  
SCALE: 1/8" = 1'-0"

KEYNOTE NO.	KEYNOTE DESCRIPTION
116623.BB	BASKETBALL BACKSTOPS (FUTURE)

**GENERAL NOTES**

- SEE OTHER 'A' SERIES SHEETS FOR ADDITIONAL INFORMATION WHERE APPLICABLE.
- MECHANICAL, ELECTRICAL, STRUCTURAL DESIGN BY OTHERS

**KEYED NOTES**

1	COURT LINES BY OWNER
2	BASKETBALL BACKSTOP, CEILING MOUNT (FUTURE)
3	BASKETBALL BACKSTOP, WALL MOUNT (FUTURE)
4	INTERIOR FINISHES, FIXTURES AND WALLS (DASHED) ARE NOT PART OF CONTRACT AND ARE SHOWN FOR REFERENCE ONLY

**WALL LEGEND**

- SEE WALL TYPES & FLOOR PLANS FOR SIZES AND DIMENSIONS OF WALLS.
- ALL WALLS EXTEND TO UNDERSIDE OF ROOF JOIST/TRUSSES ABOVE UNLESS INDICATED OTHERWISE. WHERE ACOUSTIC INSULATION IS INDICATED IN THE WALL TYPE, IT SHALL EXTEND FULL HEIGHT OF WALL.
- SEE 'A4' SERIES SHEETS FOR ASSEMBLY DESCRIPTION. WALL TYPES APPLY FOR TOTAL LENGTH OF WALL / ROOM, UNLESS NOTED OTHERWISE.

	FRAMING W/ METAL SIDING
	NEW WALL - FRAMED
	INSULATION PER WALL TYPE
	WALL TYPE - REFER TO A4.01
	WALL TO DECK ABOVE
	FUTURE CONSTRUCTION

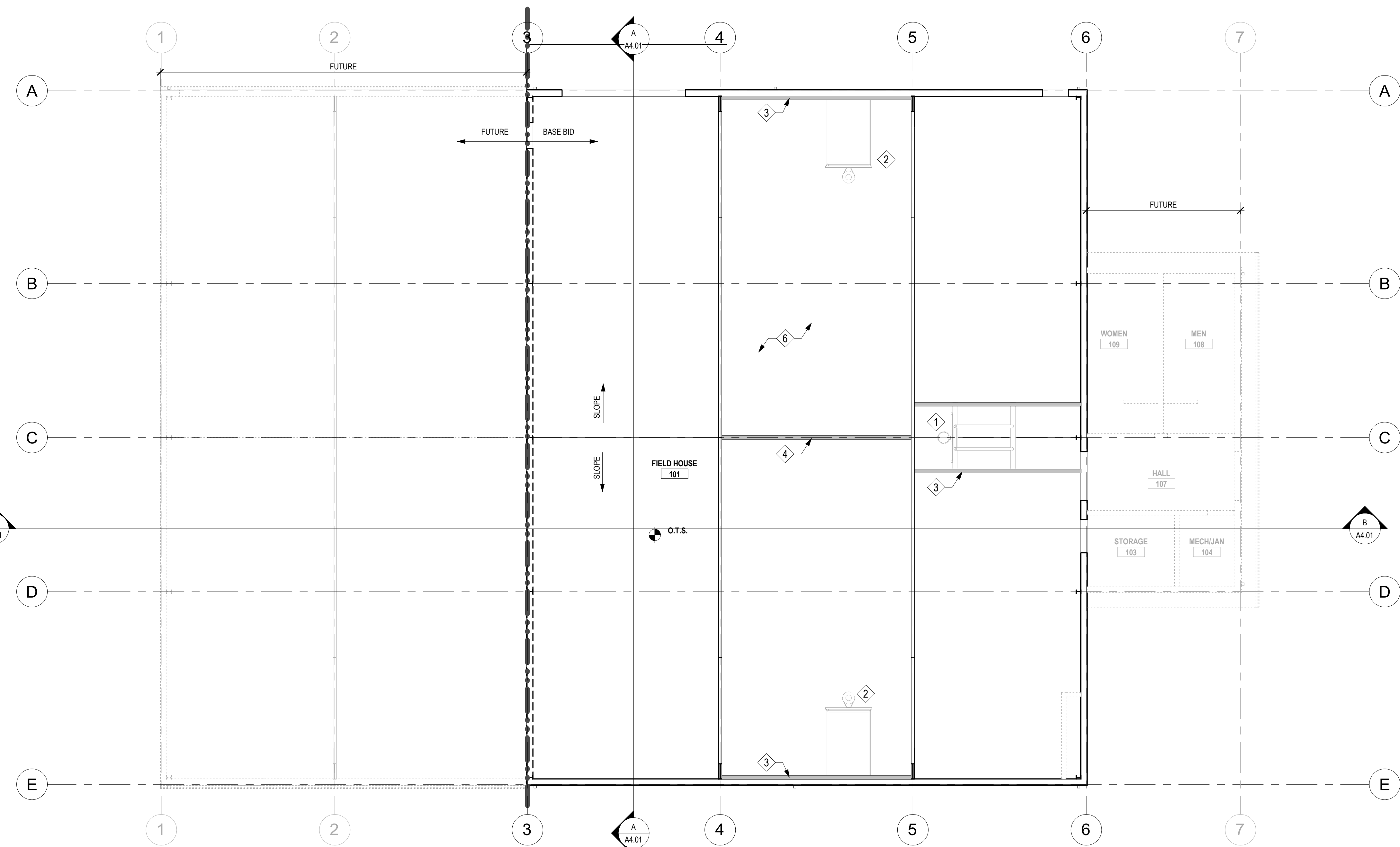
**TIMBERLAKE HIGH SCHOOL**  
**FIELD HOUSE**  
 5973 ID-54, SPIRIT LAKE, IDAHO 83869  
 FLOOR PLAN

PROJECT NO.	25016
DESIGNED BY	KC
DRAWN BY	BJ
ISSUE DATE	3-16-26
PHASE	BID
CHECKED BY	BJ
SHEET NO.	

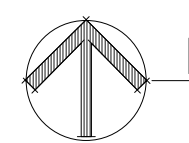
**A2.01**





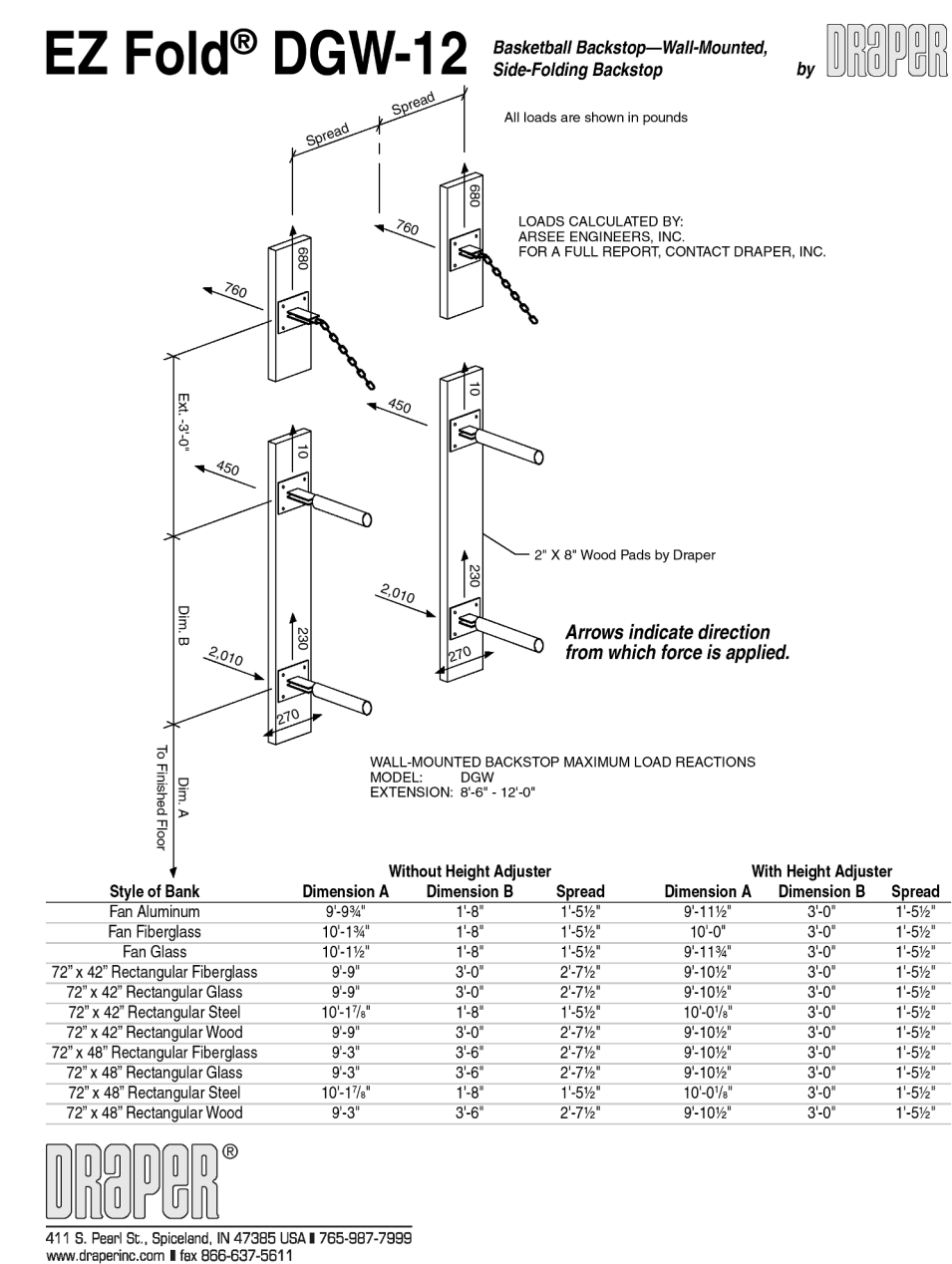
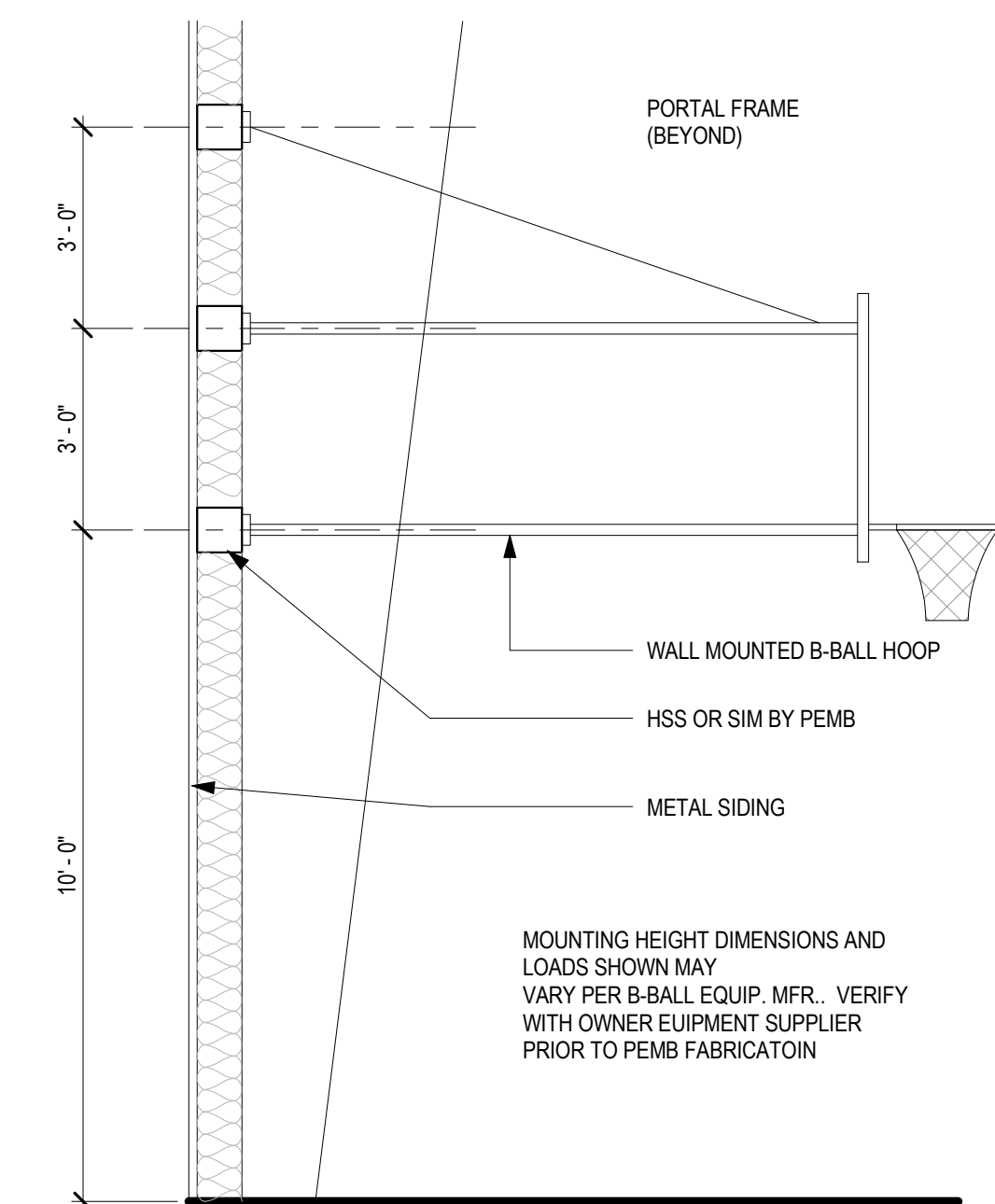
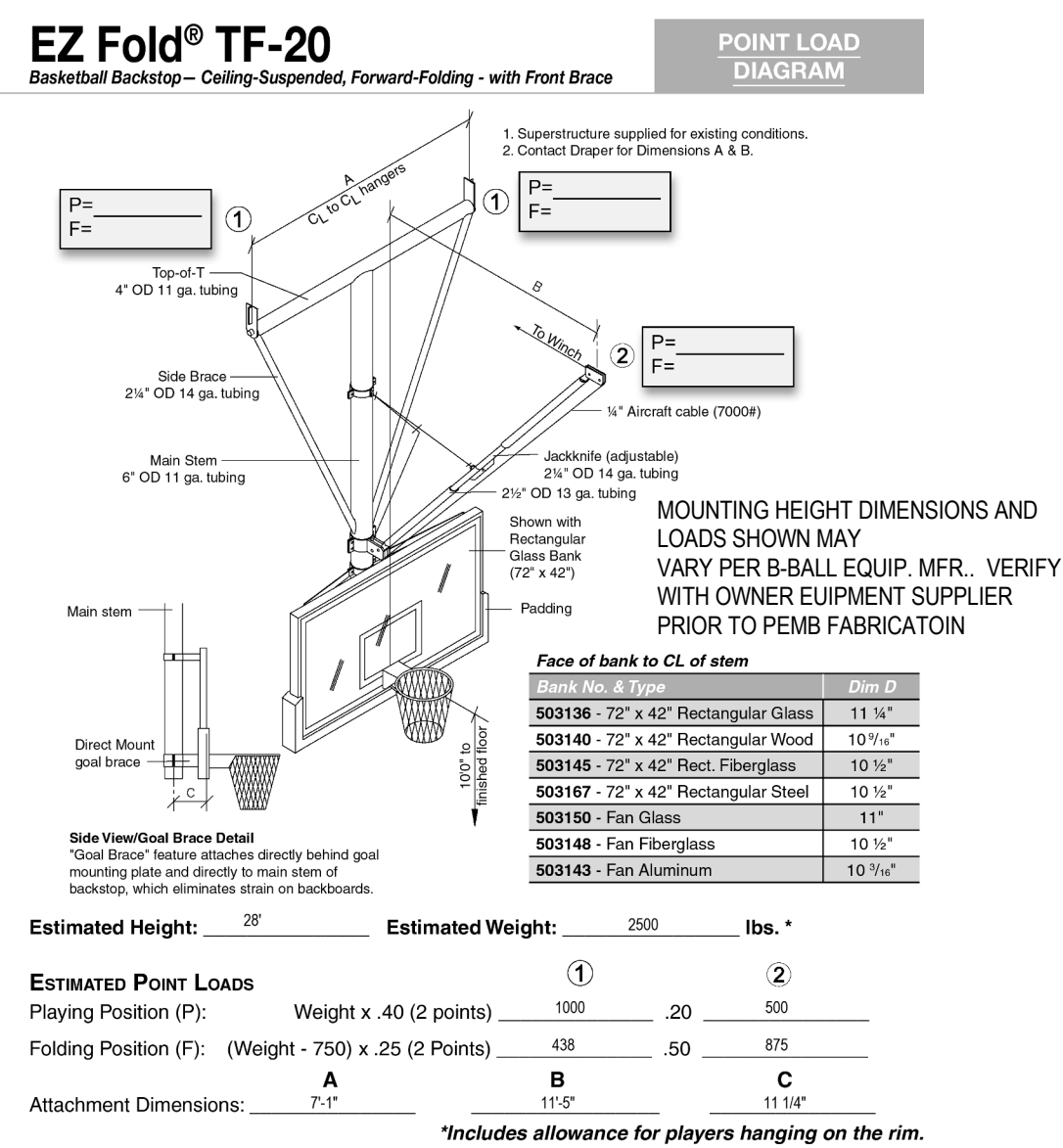
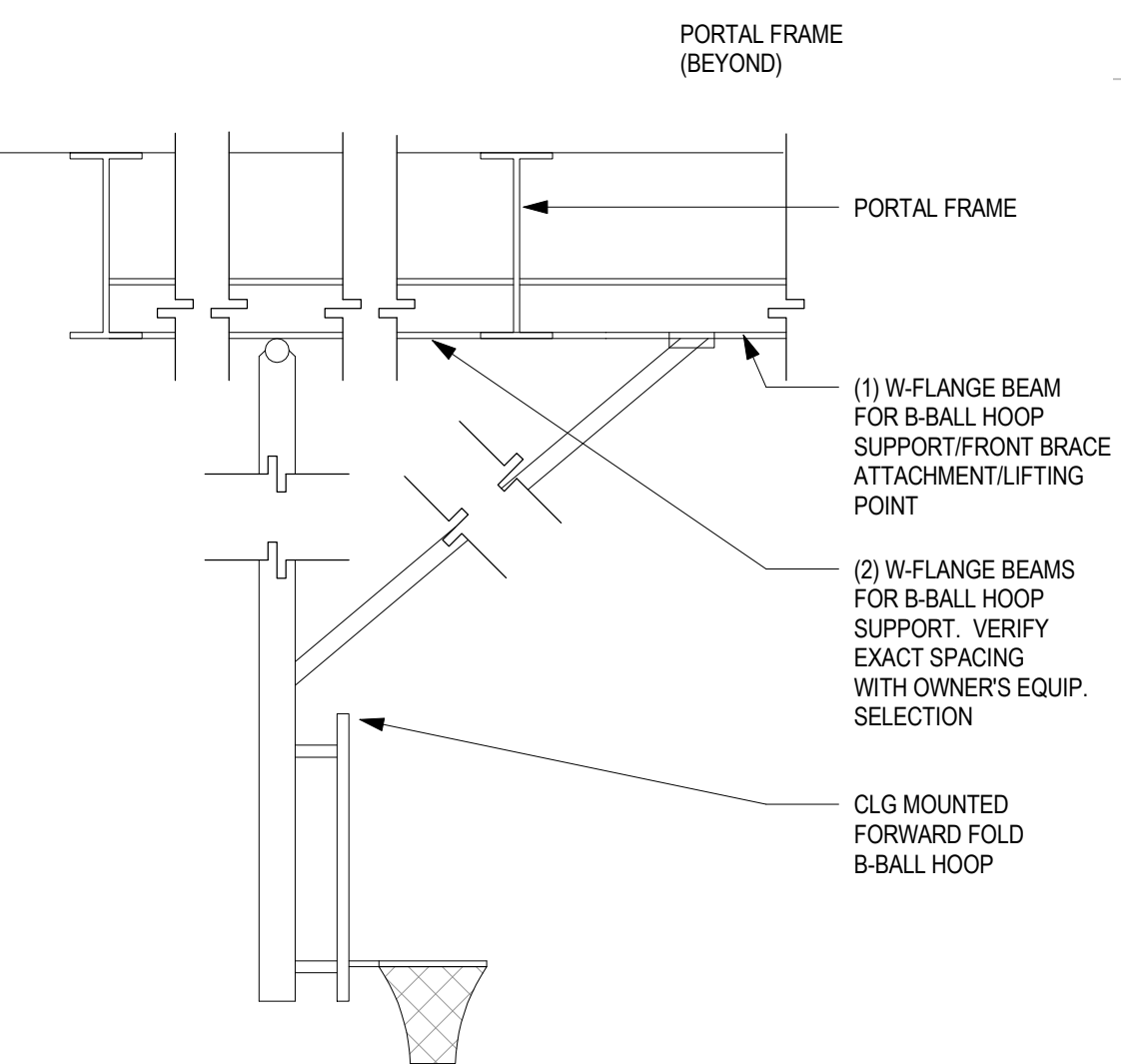


MOUNTING HEIGHT DIMENSIONS AND LOADS SHOWN MAY VARY PER B-BALL EQUIP. MFR. VERIFY WITH OWNER EQUIPMENT SUPPLIER PRIOR TO PEMB FABRICATOIN



**REFLECTED CEILING PLAN**

SCALE: 1/8" = 1'-0"



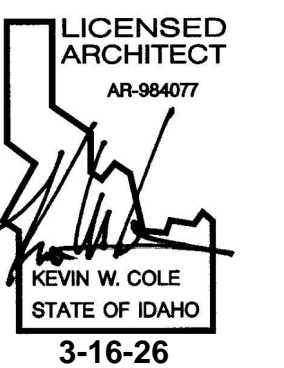
2 B-BALL HOOP-CLG-PEMB  
SCALE: 3/8" = 1'-0"

3 B-BALL HOOP-WALL-PEMB  
SCALE: 3/8" = 1'-0"

**GENERAL NOTES**

- SEE OTHER 'A' SERIES SHEETS FOR ADDITIONAL INFORMATION WHERE APPLICABLE.
- MECHANICAL, ELECTRICAL, STRUCTURAL DESIGN BY OTHERS.
- SEE TYPICAL DETAILS FOR LATERAL BRACING OF SUSPENDED CEILING GRID MEMBERS.

COPYRIGHT: 2025  
All rights reserved. Reproduction or translation of any part of this work without written permission of ARCHITECTS WEST INC. is unlawful and subject to criminal prosecution.



**MATERIAL KEYING LEGEND**

KEYNOTE NO.	KEYNOTE DESCRIPTION
-------------	---------------------



**KEYED NOTES**

- 1 BASKETBALL BACKSTOP, CEILING MOUNT. (FUTURE)
- 2 BASKETBALL BACKSTOP, WALL MOUNT. (FUTURE)
- 3 SUPPORT BEAMS BY PEMB FOR FUTURE BASKETBALL HOOPS.
- 4 SUPPORT BEAM BY PEMB FOR FUTURE FOLDING BASKETBALL BACKBOARD LIFTING POINT.
- 5 PAINT EXPOSED STRUCTURE (BY OTHERS)
- 6 EXPOSED PEMB LINER SYSTEM

**MATERIAL LEGEND**

SEE OTHER 'A6' SERIES SHEETS FOR ADDITIONAL NOTES WHERE APPLICABLE

CEILINGS NOTED AS 'FUTURE' ARE NOT IN CONTRACT AND SHOWN FOR REFERENCE ONLY

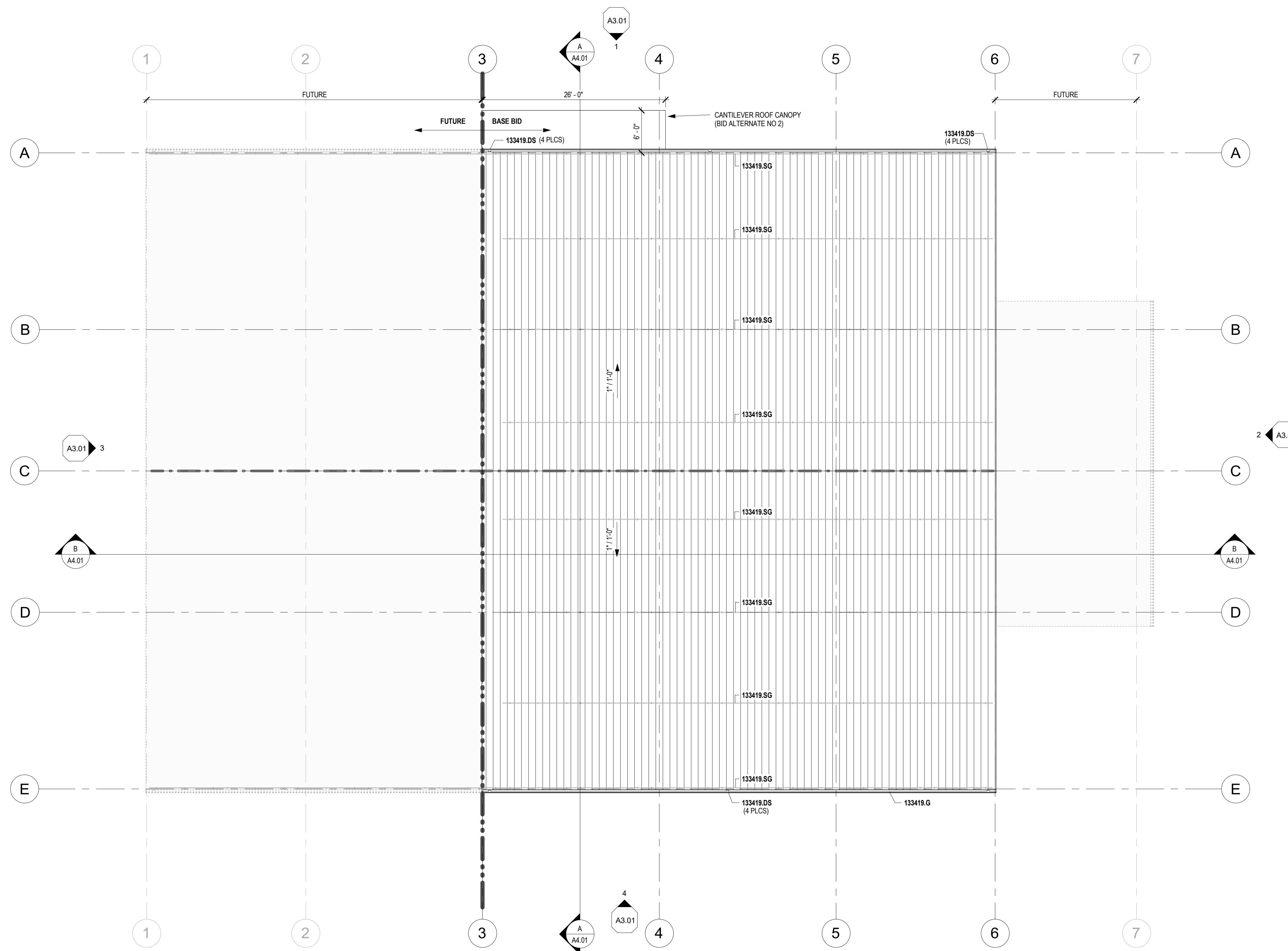
- FUTURE 092900 5/8" TYPE 'X' GWB CEILING / 4" METAL STUD FRAMING @ 16" O.C.
- FUTURE 095113 ACOUSTIC CEILING SYSTEM 2x4 OR 2x2 (AS SHOWN)
- 8'-0" CEILING / FEATURE HEIGHT ABOVE FLOOR

MECHANICAL, ELECTRICAL AND LIGHTING BY OTHERS

TIMBERLAKE HIGH SCHOOL  
FIELD HOUSE  
5973 ID-54, SPIRIT LAKE, IDAHO 83869  
REFLECTED CEILING PLAN

PROJECT NO. 25016  
DESIGNED BY KC  
DRAWN BY BJ  
ISSUE DATE 3-16-26  
PHASE BID  
CHECKED BY BJ  
SHEET NO.

A6.01



**ROOF PLAN**  
SCALE: 1/8" = 1'-0"

**MATERIAL KEYING LEGEND**

KEYNOTE NO.	KEYNOTE DESCRIPTION
133419.DS	METAL DOWNSPOUT
133419.G	METAL GUTTER
133419.SG	SNOW GUARD

**GENERAL NOTES**

- SEE OTHER 'A' SERIES SHEETS FOR ADDITIONAL INFORMATION WHERE APPLICABLE.
- MECHANICAL, ELECTRICAL, STRUCTURAL DESIGN BY OTHERS.
- REFER TO TYPICAL DETAILS FOR SEALING OF ROOF PENETRATIONS.

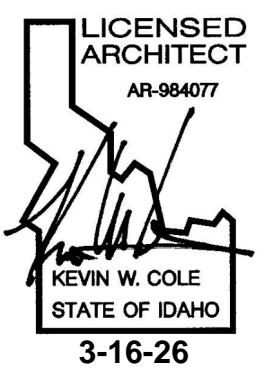
**KEYED NOTES**

No.	Description
1	-

**MATERIAL LEGEND**

No.	Description	Date
133419	METAL ROOFING	
- - -	RIDGE	
133419	PRE-FINISHED METAL RAIN GUTTER	
133419	PRE-FINISHED METAL DOWNSPOUT	

COPYRIGHT: 2025  
All rights reserved. Reproduction or translation of any part of this work without written permission of ARCHITECTS WEST INC. is unlawful and subject to criminal prosecution.



**Architects West**  
210 E Lakeside Ave  
Coeur d'Alene, ID 83814  
t. 208.667.9402  
architectswest.com

**TIMBERLAKE HIGH SCHOOL  
FIELD HOUSE**  
5973 ID-54, SPIRIT LAKE, IDAHO 83869

ROOF PLAN

PROJECT NO.	25016
DESIGNED BY	KC
DRAWN BY	BJ
ISSUE DATE	3-16-26
PHASE	BID
CHECKED BY	BJ
SHEET NO.	

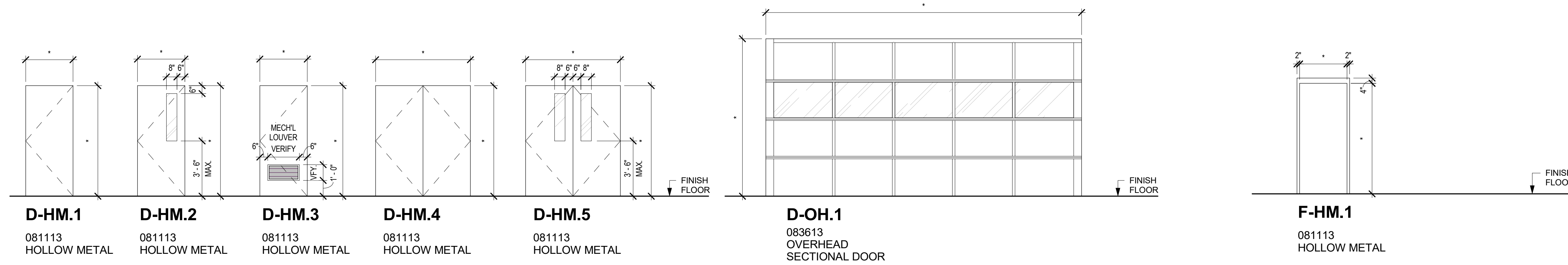
**A7.01**







NO.	DOOR						FRAME			DETAILS			HARDWARE GROUP	Fire Label	Blinds	Notes
	W x H x T	Type	Relite	Finish	Insul	Type	Depth	Finish	Head	Jamb	Threshold					
101A	3'-0" x 7'-0" x 1 3/4"	D-HM.2	ISG	PT	X	F-HM.1	11 1/8"	PT	2/A10.40	6/A10.40	9/A10.40	1	--	--		
101B	16'-0" x 14'-0" x 2"	OH.1		FF	X		10 1/8"	FF	4/A10.40	3/A10.40	12/A10.40					
101C	3'-0" x 7'-0" x 1 3/4"	D-HM.2	ISG	PT	X	F-HM.1	11 1/8"	PT	2/A10.40	6/A10.40	9/A10.40	1	--	--		
101D	6'-0" x 7'-0" x 1 3/4"	D-HM.5	ISG	PT	X	F-HM.1	10 1/4"	PT	2/A10.40	6/A10.40	9/A10.40	2	--	--		



**DOOR TYPES**  
SCALE: 1/4" = 1'-0"

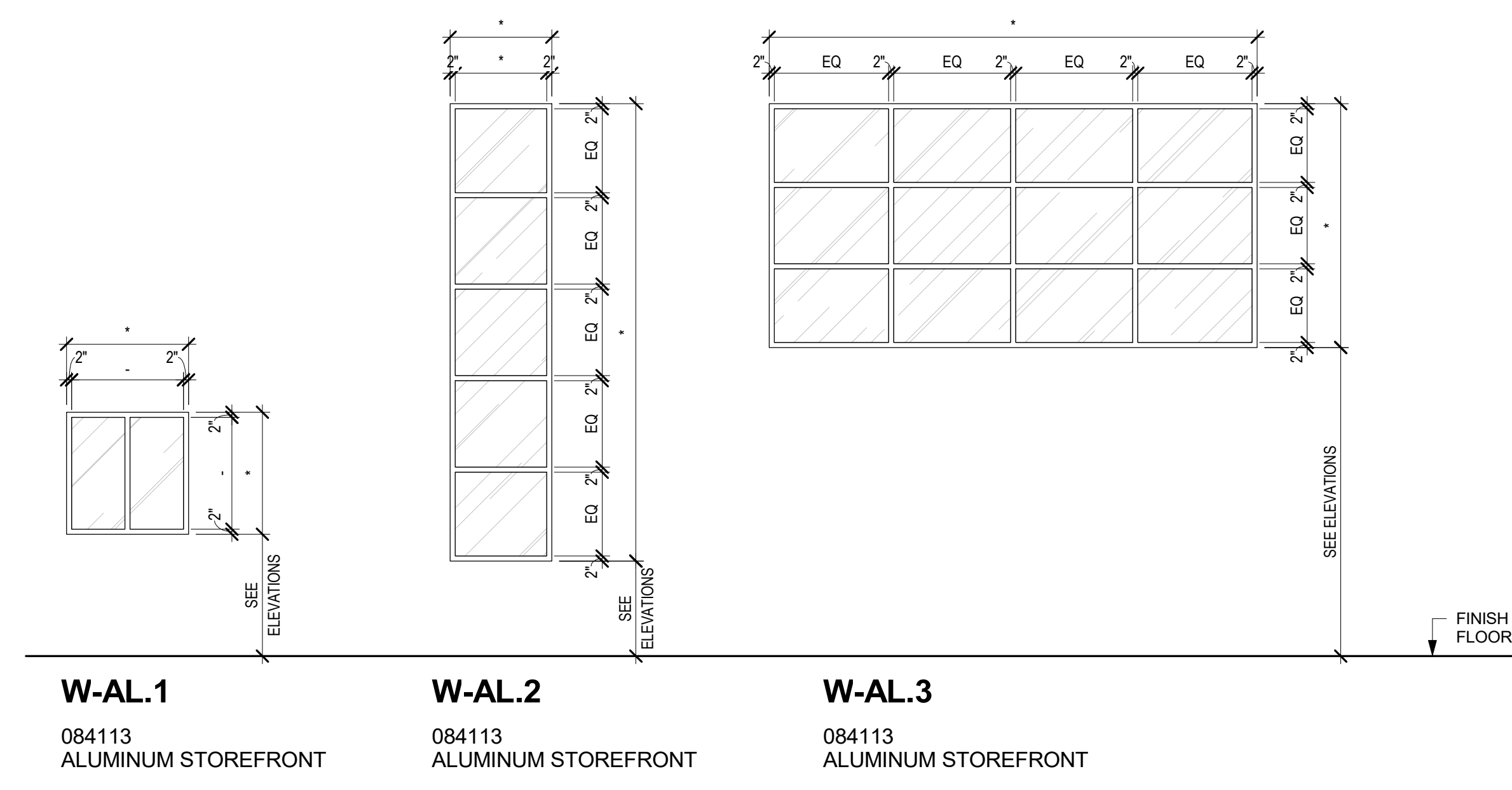
**FRAME TYPES**  
SCALE: 1/4" = 1'-0"

NO.	WIDTH	HEIGHT	WINDOW			DETAILS				NOTES
			TYPE	FRM. FIN.	GLAZING	HEAD	JAMB	SILL	BLINDS	
101B	16'-0"	8'-0"	W-AL.3	FF	IFG	3/A10.40	7/A10.40	11/A10.40	--	
101C	3'-4"	15'-0"	W-AL.2	FF	IFG	3/A10.40	7/A10.40	11/A10.40	--	
101D	4'-0"	4'-0"	W-AL.1	FF	IFG	3/A10.40	7/A10.40	11/A10.40	--	
101E	4'-0"	4'-0"	W-AL.1	FF	IFG	3/A10.40	7/A10.40	11/A10.40	--	

ROOM FINISH SCHEDULE									
NO.	ROOM NAME	FLOOR FINISH	BASE	WALL FINISH				CEILING FINISH	NOTES
				NORTH	EAST	SOUTH	WEST		
101	FIELD HOUSE	CONC	-						

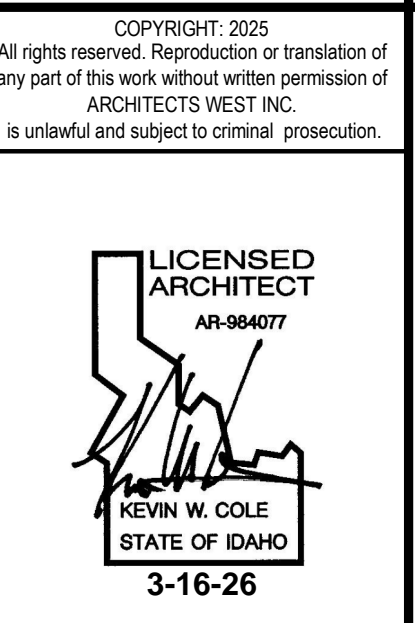
MATERIAL FINISH LEGEND							
KEYNOTE	CODE	DESCRIPTION	MANUFACTURER	PRODUCT	COLOR	CHARACTERISTICS	NOTES
033000	CONC	SEALED CONCRETE	SEE SPEC	SEE SPEC	CLEAR		



**WINDOW TYPES**  
SCALE: 1/4" = 1'-0"

**GENERAL NOTES**

- ALL EXTERIOR DOOR RELITES AND SIDELIGHTS SHALL BE CONSTRUCTED WITH LAMINATED GLAZING.
- ALL INTERIOR SETS OF VESTIBULE DOORS RELITES AND SIDELIGHTS SHALL BE CONSTRUCTED WITH LAMINATED GLAZING.
- CONTRACTOR IS RESPONSIBLE TO VERIFY THAT ALL DIMENSIONS AND JAMB WIDTHS SPECIFIED WILL FIT IN CONSTRUCTION AS DETAILED PRIOR TO FABRICATION AND INSTALLATION. NOTIFY ARCHITECT DURING SUBMITTAL PROCESS OF ANY DISCREPANCIES.
- SAFETY GLAZING SHALL BE PROVIDED AS REQUIRED BY THE BUILDING CODE BY EACH SUBCONTRACTOR PROVIDING ANY GLAZING. IT IS THE RESPONSIBILITY OF EACH SUBCONTRACTOR TO DETERMINE THE SAFETY GLAZING REQUIREMENTS.
- CONTRACTOR SHALL COORDINATE WITH OWNER FOR HARDWARE REQUIREMENTS. ALL LOCKSETS & LATCHES SHALL BE ADA COMPLIANT.



**SCHEDULE KEY NOTES**

NOTE 1 BID ALTERNATE

NOTE 2

NOTE 3



**ABBREVIATIONS DOOR/WDW**

**GENERAL ABBREVIATIONS**

AFS 084113 - ALUMINUM FRAME SYSTEM

FF FACTORY FINISH

HM HOLLOW METAL

OSD OVERHEAD SECTIONAL DOOR

PT PAINT FINISH

**GLAZING TYPES:**

ISG 088000 - INSULATED SAFETY GLAZING UNIT

IFG 088000 - INSULATED FIBERGLASS GLAZING UNIT

No.	Description	Date

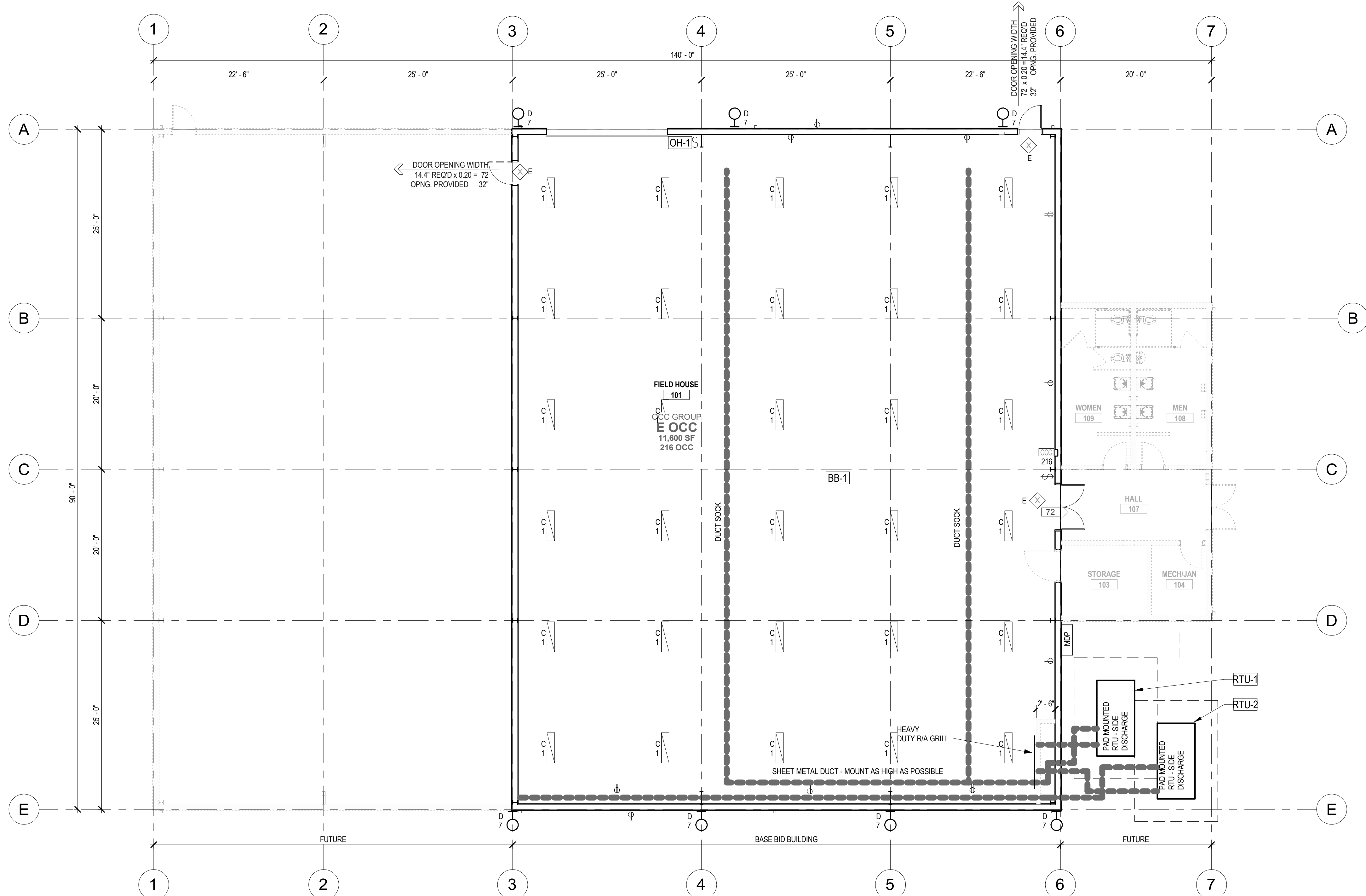
**TIMBERLAKE HIGH SCHOOL**  
**FIELD HOUSE**  
**5973 ID-54, SPIRIT LAKE, IDAHO 83869**  
**TYPES & SCHEDULES**

PROJECT NO. 25016  
DESIGNED BY KC  
DRAWN BY BJ  
ISSUE DATE 3-16-26  
PHASE BID  
CHECKED BY BJ  
SHEET NO.

**A10.00**







**GENERAL NOTES**

- SEE OTHER 'A' SERIES SHEETS FOR ADDITIONAL INFORMATION WHERE APPLICABLE.
- MECHANICAL, ELECTRICAL, STRUCTURAL DESIGN BY OTHERS

COPYRIGHT: 2025  
All rights reserved. Reproduction or translation of any part of this work without written permission of ARCHITECTS WEST INC. is unlawful and subject to criminal prosecution.

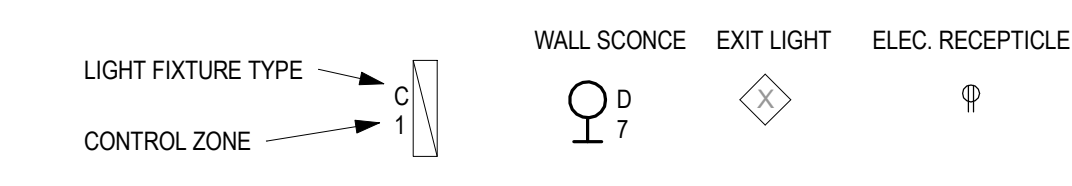
**LICENSED ARCHITECT**  
AR-984077  
KEVIN W. COLE  
STATE OF IDAHO  
3-16-26

**Architects West**  
210 E Lakeside Ave  
Coeur d'Alene, ID 83814  
t. 208.667.9402  
architectswest.com

**WORK SHOWN ON THIS SHEET IS NOT IN CONTRACT AND IS SHOWN FOR REFERENCE OTHERS.**

**DESIGN AND INSTALLATION OF MECHANICAL, ELECTRICAL, PLUMBING, LOW VOLTAGE, AND FIRE ALARM IS PART OF FUTURE PHASE AND WILL BE DESIGNED AND PERMITTED SEPERATELY**

**1 MEP PLAN**  
SCALE: 1/8" = 1'-0"



**TIMBERLAKE HIGH SCHOOL**  
**FIELD HOUSE**  
5973 ID-54, SPIRIT LAKE, IDAHO 83869  
MEP CONCEPTUAL PLAN

PROJECT NO.	25016
DESIGNED BY	KC
DRAWN BY	BJ
ISSUE DATE	3-16-26
PHASE	BID
CHECKED BY	BJ
SHEET NO.	

**ME2.01**



