



COUNSELING &
SOCIAL WORK

Annual Program Update

April 7, 2025

BE THE ONE who ...

- Believes that people are doing the best they can with what they have
- Meets people where they are
- Operates from unconditional positive regard
- Holds space with people

Counseling and Social Work Services Scope

Campus Counselors, Student Assistance Counselors and Social Workers, CHOICES, SAPP

AVID
Ask an Expert Series
Back to School Fair
CARE Team
CBE/CBA testing
CCMR
CHOICES

- Family Center
- ADAPT/HOPE
- Medication Disposal Day
- Whole Child Series
- Love & Logic classes

Cohorts 1 & 2
Collegiate Academy
CPS
Dual Credit

Food for Kids
Foreign Exchange
Future Pathways
Go! Centers
McKinney-Vento/ESSA
Mental Health Awareness Training
Parent Cafe & Parent Education
Professional Learning
Character TEKS Curricula PK-12
School Age Parent Program (SAPP)
Student Outcries and Protocols
***Tarrant Area Food Bank Markets**
Texas Model Programs
TRIO Talent Search Program
Wellness Expos & Awareness



Cohorts & Interns

COHORT 1 & 2

Two years of cohorts for anyone new to the department
Meet every six weeks—five in-person and one virtual

Topics include:

- LISD Culture and Institutional Knowledge
- Shifting from teacher to counselor
- Boundaries
- Time management and executive functioning skills as it applies to the role
- Data-disaggregation
- Department protocol and procedure support
- Year-at-a-glance review with mentors
- Texas Model planning and implementation

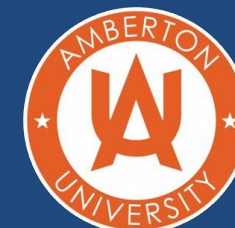
Number of participants 2024-2025:

- Cohort 1: 16
- Cohort 2: 21

INTERN PROGRAM

- Combination of School Counselors, Social Workers and Clinical Mental Health Specialists
- Strong community relationships with local and online universities
- Training for supervisors and year-at-a-glance aligned with their specific program needs and roles
- Ongoing support for interns by site supervisors and CSW Admin
- Scheduled monthly check-ins
- Special projects

Number of interns 2024-2025: 11 full year placements



Professional School Counselors & Texas Model Components

The primary duty of Professional School Counselors is to “counsel students to fully develop each student’s academic, career, personal, and social abilities” (2 TEC §33.006). A school counselor works with the school faculty and staff, students, parents, and the community to plan, implement, and evaluate a comprehensive school counseling program that conforms to the most recent edition of the Texas Model for Comprehensive School Counseling Programs developed by the Texas Counseling Association (2 TEC §33.005).

Four components of comprehensive school counseling program:

- Individual Planning
- Guidance
- Responsive Services
- System Support

LISD CREST Counseling Awards

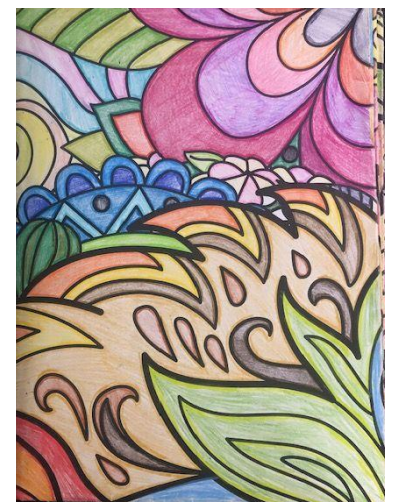
43 total LISD campuses recognized in 2024 as exemplary Texas Model programs

- 3 Advocacy Level: 3 previous CREST and conference presentation or advocacy day at state capitol
- 24 Leadership Level: 3 previous CREST
- 26 CREST Level



BE THE ONE who ...

- Knows that everyone has a story...
- Collaborates to participate in every student's story and meet them where they are
- Sees that some pieces are large and some are very small
- Sees that sometimes we get to be a part of their celebrations and other times their defeats.
- In the end, the pieces all come together and make up the student in front of us.



Back to School Fair

All fairs/deployments held in July/August of the year listed

- 2018: 3500 students served
- 2019: 4176 students served
- *2020: 3802 students served
- *2021: 3814 students served
- *2022: 3312 students served
- 2023: 5553 students served (in-person fair & campus deployment)
- 2024: 3914 students served (in-person fair & campus deployment)



Save the Date!! JULY 29th

- Change in format to meet family needs
- Campus deployments as needed to ensure all students have supplies!

*Backpacks & supplies were provided in campus deployment in lieu of the full scale fair



Responsive Services

OUTCRY DATA LISD	Suicidal Ideation/ Non- Suicidal Self Injury	Violent Behavior Ideation
2019-2020	731	190
2020-2021	755	158
2021-2022	1019	352
2022-2023	1179	369
2023-2024	1011	414
2024-2025 YTD	736	438

- ## Responsive Services
- Prevention
 - Remediation/Intervention
 - Crisis Response



Count of Office Visits with CSW Team

(individual students counted multiple times)

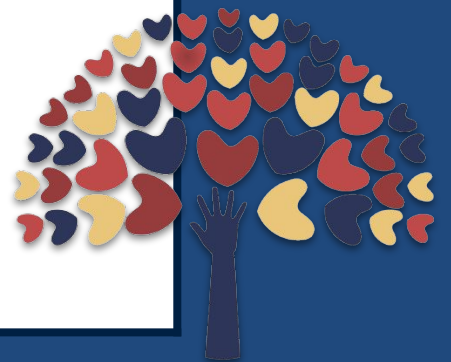
	2019-2020	2020-2021	2021-2022	2022-2023	2023-2024	2024-YTD
Campus Counselor	508,636	434,967	573,051	562,453	510,514	437,932
Student Assistance Counselor	8165	10986	11362	11160	7820	10723
Social Worker	4801	7534	1295	6706	6873	10291
TOTALS:	521,602	453,217	595,708	580,319	525,207	458,946

All students in LISD have a minimum of two touch points with their counselor.



Description of Office Visit Reasons

Academic	Guidance	Responsive Services	Parent/ Community Contact	System Support
Academic Advising CBE/CBA CCMR Class Rank College/Career Dual Credit Enrollment Grad Req Check GT IGC/Grad LLC Scheduling/ Endorsement/FHSP Summer School Tutoring TXVSN/VLA	Second Step Character Strong Early Mental Health Intervention Red Ribbon Campaign Groups Character Education Future Pathways FHSP/Registration	Basic Needs Behavior CPS Coping Skills Family System McKinney-Vento NSSI/SI Personal Relationship SAC/SW Social Emotional Substance Abuse	Outside Contact Parent Contact Parent/Teacher Conference	504/MTSS/ARD Admin/Staff Consult Attendance Committee CHOICES STRS



Time Tracker Data

Texas Education Code (TEC), §33.006(d), as added by SB 179, 87th Texas Legislature, Regular Session, 2021

- Requires school districts to adopt a policy that requires a school counselor to spend at least 80% of the school counselor's total work time on duties that are components of a comprehensive school counseling program.

ES Percentages		
Component	23-24	24-25
Guidance	14.8%	24.8%
Individual Planning	5.4%	4.8%
Responsive Services	27.1%	29.5%
System Support	43.5%	32.6
Non-Counseling Duties	7.8%	8.1%

MS Percentages		
Component	23-24	24-25
Guidance	5.8%	11.5%
Individual Planning	7.8%	25.7%
Responsive Services	24.7%	22.%
System Support	53.4%	33.9%
Non-Counseling Duties	8.4%	6.7%

HS Percentages		
Component	23-24	24-25
Guidance	1.4%	4.5%
Individual Planning	25.8%	42.7%
Responsive Services	28.1%	22.0%
System Support	37.3%	22.1%
Non-Counseling Duties	6.8%	8.6%

Reflections

- Increased Individual Planning in secondary corresponds to academic advising, goal-setting and CCMR.
- Increased Guidance is more instruction and groups which show prevention and intervention outcomes.
- “My principal said that my time tracker has really supported her this year. Seeing where my time is spent showed her our intentionality in shifting time to areas of greater need.”*
- “My time tracker has allowed me to truly implement my counseling PROGRAM this year. I have been able to be proactive which has been much more effective in reducing problem behaviors!”*



LRP P.O. 2.5. Support the mental health, behavioral needs and well-being of students

GROUP COUNSELING

Prevention & Intervention

Needs-based

- Grief
- Coping & Regulation Skills
- Conflict Resolution
- Impulse Control & Self-Management
- DAEP Support
- Anxiety
- Friendship
- Executive Functioning
- Transitions and Newcomers

Co-leading

Student Connection

Group Counseling

- 553 groups this school year. (to date)
- 12,478 student touch points in group this year
- Average students in group: 6
- Average number of sessions per group: 6



“If they are hungry, they are not ready to learn.”

“It was important that we just had a meal together.”

“Yes please and no thank you.” Voice and preference.



C.H.O.I.C.E.S

Program	23-24	24-25
ADAPT (Truancy/Behavior referrals)	41 completions	150 completions
HOPE (Substance use)	156 completions	164 completions
SAPP (Student Aged Parent Program)	37 graduates	19 graduates 15 May graduates
Whole Child Series	663 participants	1,015 participants
Love and Logic Series	1,790 hours trained	1,812 hours trained

Elementary school—**lunch group and started talking about food, picking around it, is this the first time you've had this? You can put ketchup on it** (teriyaki rice), does this happen a lot, order lunch at end of the previous week, don't know what i'm ordering, **can you picture things if it is on the menu?** sometimes. waffle taco, mashed bowl with other items, i don't know what that is? can we at least try it. **Sensory test**, spanish word for rotten, rice is not supposed to be sweet, culturally, decided to do pictures, talked to cafeteria manager—can i get some sides for them? **kids felt bad about waste and they were uncomfortable**, what if we try planning what we are going to order, sticks with food pics, **had to shift the curriculum out the window bc this become paramount, can't talk about anything else if we aren't eating, important to just have a meal together**, we will get to the games eventually, spent a few weeks to make sure we made it through the rotation of foods, carrots—no it's not. kinder, 1st and second graders. learned what they like and how to order it—yes please and no thank you.

ADVISORY AND GUIDANCE

ES Guidance

MS Advisory: Campus Menu

Year at a Glance Pacing Guides

Character TEKS

Red Ribbon Campaign

Future Pathways

Everfi

State Mandated Lessons

Advisory & Guidance

Elementary School

- 1 Kindness Week lesson, 4 RRC lessons, 6 BPU lessons, 6 CPU lessons, 1 GenTX lesson, 20 Second Step lessons
- Second Step—mainly teachers, Guidance—counselors

Middle School

- Guidance Office Visit data
- 2-3 EMHI lessons (Early Mental Health Intervention) completed by counselors (3 for 6th, 2 for 7th & 8th)
- Campus Wellness Menus to complete lessons developed by committee of MS counselors and admin due to shift in block scheduling: 10 Character Education lessons, Kindness Week, 4 RRC lessons, 1 SB 9 lesson (from CACNT), 4 Digital Citizenship lessons, 10 Future Pathways lessons, 1 Fentanyl Prevention lesson

High School

- 19,925 HS students receiving 13 EverFi lessons: Understanding Mental Wellness: Challenges, Coping Strategies; Character Playbook: Self-Awareness, Social Awareness, Responsible Decision-Making, & Relationship Skills; Financial Literacy: Budgeting, Checking/Saving Accounts, Credit and Debt Basics
- Guidance Office Visit data
- SAC/PSC and admin collab: 4 Digital Citizenship lessons, 4 RRC lessons (vaping, drug, & alcohol awareness and prevention), 3 Early Mental Health Intervention (EMHI) lessons, 2 Future Pathways lessons, 13 EverFi Lessons, 1 Fentanyl Prevention lesson, 1 SB 9 lesson (from CACNT)

Advisory Focus Group

- Student voice
- Teacher and staff input
- Updated lessons for engagement

LRP P.O. 2.1: Increase relevance and effectiveness of MS/HS advisory structure and content over a 3-year period

SB 9 Parent Opt-In/Opt-Out	Opt-In	Opt-Out	Not Completed
Elementary	70.2%	7.4%	22.4%
Middle	79.2%	4.4%	16.4%
High	58.3%	3.3%	38.4%



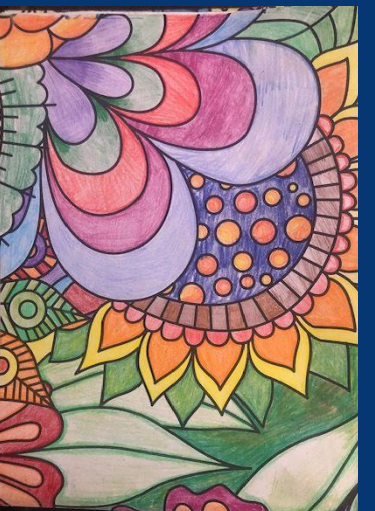
Advisory & Guidance

Parent Preview Options

Prior to any lessons being taught, campus counselors communicate with parents informing them of the content and the preview options.

1. Online: All curricula are linked on the Counseling and Social Work website.
2. Counselor/campus newsletters: Prior to new units and lessons, counselors are sending information to parents in digital newsletters
3. Counselor meeting: Parents have the option to meet with the counselor to ask any questions they may have about the material to be presented.

*State law requires that parents have a preview option.



PARENT CAFÉ

Table Themes

24-25 Title II grant

Equipping parents

Parent & Staff participation

Protective Factors

Building Community

School Engagement

Advertising and Marketing

Parent Cafe

Parent Cafe Data

- Number of sessions offered: 30 (series is 5 sessions)
- Total Number of participants: 118

Title II Grant 2024-2025

- 15 counselors and social workers trained
- Adding campus Parent Cafes 2025-2026

Advertising and Parent Outreach

- The RAPPort and Chiefs Chatter
- Principal and counselor newsletters
- Social media
- Presentations by CSW to assistant principals and counselors

Next Steps

- Work with campus administrators and Student Services to increase referrals for parent support
- Evaluate best practices for timing and frequency of Parent Cafes

Additional Parent Engagement data: 523 parent education campus opportunities

Themes

- Parent Cafe model for each event to have a theme
- Parent Cafe “in a box” developed by SAC/SW teams



**Parenting is a
Work of Heart**



Bee Resilient



CCMR AND PERSONAL GRADUATION PLANS

8th Grade TECC Tours

Current TECC Students

9th Grade Future Pathways Lesson

Parent Education: Learning Platforms

Course Selection

CCMR Plans by Campus

25-26 Fall Four-Year Plan for 8th grade

Summer Workgroup for Registration

CCMR & Personal Graduation Plans

PGP Completions

- 8th grade PGP completions after TECC E/W Tours: 2929
- 9th grade PGP completions after Future Pathways guidance: 2478
- TECC E/W PGP completions after TECC counselor meeting: 807

CCMR & Counselors

- Data-driven meetings with students to increase CCMR (ACT/SAT testing, AP/dual credit enrollment, CTE campus pathways)
- “Students were much more prepared for their registration due to individual meetings with their grad plan discussed in the fall. Feel students have much more hope for their future as we talk about post-secondary options.”
- Elementary focus on college and career awareness and events
- TECC-W CCMR Day, Spring 2025

Summer Workgroup: Registration & CCMR

- Systemic registration processes with CCMR focus
- CCMR parent education opportunities
- Four-year plan protocol for 8th grade fall by 9th grade counselors
- Diversification of information for students and families

LRP P.O. 1.2: Enhance student learning through experiences that connect to student interests and needs, prepare students to develop future opportunities, and determine appropriate academic interventions and support.



- Connection
- Coping
- Problem Solving

**Putting
Together our
Student's
Stories**



From Students:

"You mean I'm not alone?"

"I colored that spot. I remember that was a really rough day. But today is better."

From the SAC:

"This poster has served as a tangible tool to discuss that while we don't know what the future holds we can choose to do the best we can with what we have right now."

"Students would look at it, pick up a color and often just start talking. It was a way for them to feel connected to other kids, realize they weren't alone in their struggles and that it all worked together to create a beautiful picture."



COUNSELING &
SOCIAL WORK

lisd.net/counseling

Questions?