

Knowing Through Data:

Your School Climate & Connectedness Survey Results



Kami Moore
October 12, 2023

Introductions

1. Why did you run for the School Board - What change do you hope to see?
2. What do you hope to gain from today's conversation?

Today's Objectives

1. Explore your 2023 SCCS results
2. Make meaning of the results
3. Identify ways you will use this information

Warm Up Conversation

What do students, staff, and families in your communities need to be successful this year?

What is “School Climate and Connectedness” ?

School climate is a broad, multifaceted concept that involves many aspects of the student’s educational experience.

A positive school climate is the product of a school’s attention to fostering safety; promoting a supportive academic, disciplinary, and physical environment; and encouraging and maintaining respectful, trusting, and caring relationships throughout the school community no matter the setting—from Pre-K/Elementary School to higher education.

-National Center on Safe Supportive Learning Environments

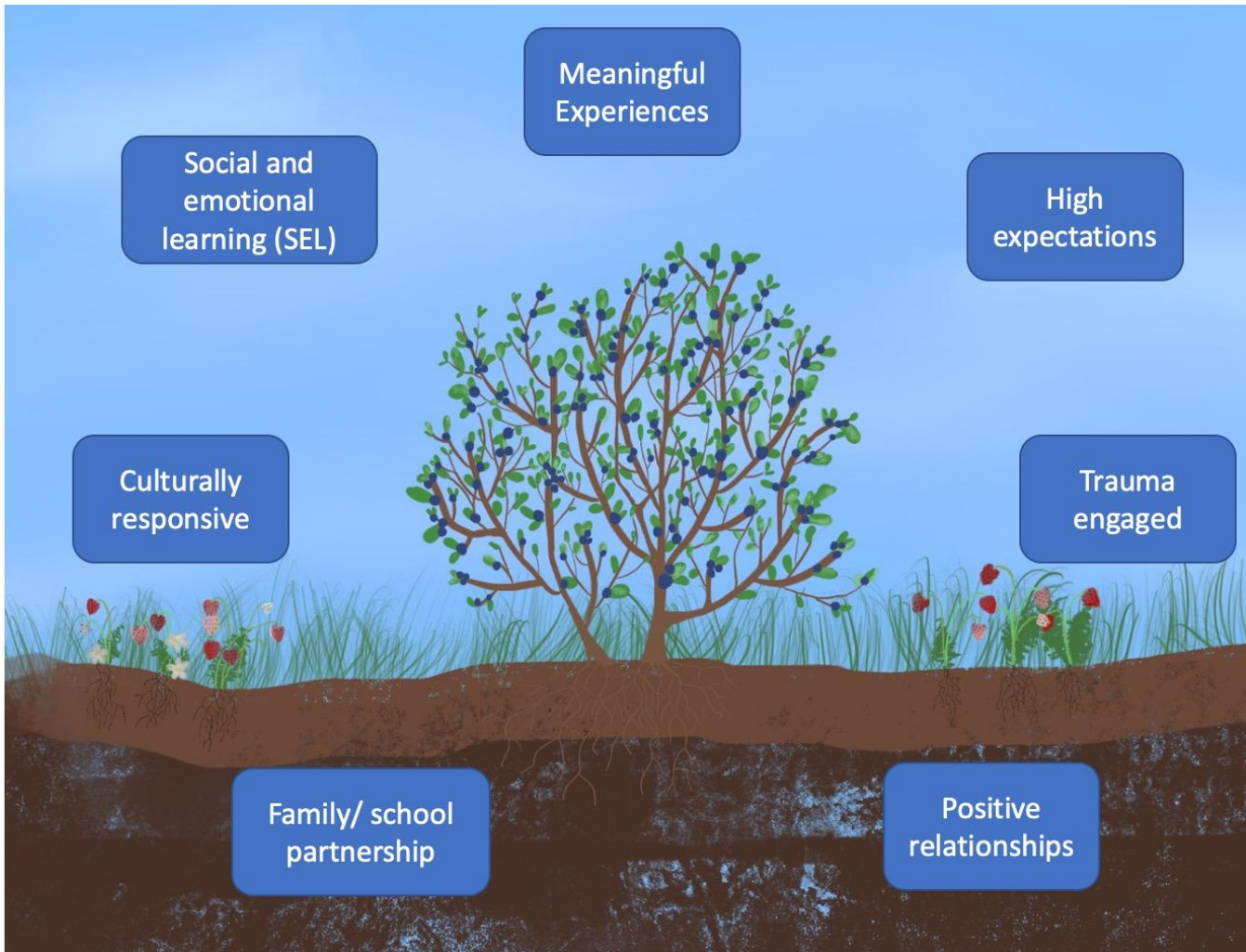
What are key indicators to school climate?

What does it **look** like? What does it **sound** like?
What does it **feel** like?



"Positive school climate and connectedness is not a program but a way of engaging in the world. How do we make this the foundation of all of our interactions?" -Alaska school counselor

What is “School Climate and Connectedness” ?



School Climate Includes 3 Main Components:

1. **Safety**
2. **Support**
3. **Environment**

A positive school climate is linked to:



About the Survey (SCCS)

- **2006:** Developed in partnership with American Institutes for Research (AIR) & school districts.
- **2017:** Online interactive survey platform (Panorama Education)
- Student, Staff & Family Survey (s) Options
- **2018:** Validated National Tool
- Support before, during, and after survey administration



2023 changes to the Family Involvement Scale

- Respond to feedback from districts
- Alignment with national research about family/ school partnership, such as the Dual Capacity Framework
- Alignment with Alaska-specific models, such as the *Stronger Together* framework
- Alignment with statewide efforts, such as the Statewide Family Engagement Center

Measuring Family Partnership with SCCS

Previous Years

- “Family and Community Involvement” (All surveys)
- “Family Engagement at School” (Family)
- “Opportunities for Involvement at School” (Family)
- “School Communication with Families” (Family, Staff)
- “Student Support at Home” (Family)

New in 2023

- “Family Partnership- School Capacity” (Families, Staff)
- “Family Partnership- Staff Capacity” (Staff)
- “Family Partnership - Family Capacity” (Families)

Re-distributed questions, removed some about events and activities, and added some new questions.

Existing questions still on SCCS

- The school does a good job communicating to families.
- This school is a welcoming place for families like mine.
- This school values and welcomes elders.
- This school involves parents/families in most school events or activities.
- What would help you to be more involved in your child's school?





Student Climate & Connectedness Survey

(3-5)

Students (3-5)

- Demographics
- Caring Others (Grades 3-5)
- Social and Emotional Learning (Grades 3-5)
- Recommendation Question (Grades 3-5)
- Safety Question (Grades 3-5)



Student 6-12: Climate & Connectedness Survey

- Student Risk Behaviors: Delinquent Behaviors
- Student Risk Behaviors: Drug and Alcohol Use
- Student Involvement
- Respectful Climate
- School Safety
- Family and Community Involvement
- Demographics
- Social and Emotional Learning
- High Expectations
- Caring Adults
- Community Support
- Cultural Connectedness
- Peer Climate



Staff: Climate & Connectedness Survey

- Student Risk Behaviors: Delinquent Behaviors
- Student Risk Behaviors: Drug and Alcohol Use
- Student Involvement
- District Leadership
- School Safety
- Family/School Partnership - Staff Capacity
- Family/School Partnership - School Capacity
- Demographics
- School Leadership
- Staff to Student Relationships
- Staff to Staff Relationships
- Staff Beliefs
- Social and Emotional Learning
- Trauma Engaged Schools
- Peer Climate
- Cultural Connectedness
- Professional Learning Interests



Family: Climate & Connectedness Survey

- School Safety
- Family and School Partnerships - School Capacity
- Family and School Partnerships - Family Capacity
- Cultural Connectedness
- Background Information
- Student Support at Home
- Communication Preferences

Available Languages: English, Spanish, Hmoob (Hmong), Faa-Samoa (Samoan), Wikang Tagalog (Tagalog)

Your 2023 Survey Results:

Northwest Arctic Borough School District



NWABSD Participation

2023 Response rates

- Students:
 - *Grades 3-5:* 304
 - *Grades 6-12:* 380
- Staff: 121
- Family Members: 193



Insight # 1 [Background Questions] Students and families reporting somewhat difficult or very difficult affording basic things they need reported feeling less connected and favorable to school climate.



2023 School Climate &
Connectedness Survey 2023
Grade 6-12 Student Survey

Group Name

Group Size

Caring Adults
Community Support
Cultural Connectedness
Family and Community Involvement
High Expectations
Peer Climate
Respectful Climate
School Safety
Social and Emotional Learning (Grades 6-12)
Student Involvement
Student Risk Behaviors: Delinquent Behaviors
Student Risk Behaviors: Drug and Alcohol Use

All respondents

380

59% 64% 57% 75% 67% 31% 50% 64% 70% 50% 86% 90%

These days, many families in Alaska have difficulty affording basic things they need, like food, clothing, transportation or housing. In the past year, how difficult has it been for your family to get the basic things you need?

Not at all difficult

234

+2 +2 +4 +3 +3 +5 +5 +7 +3 +2 +2 +2

Somewhat difficult

135

-4 -2 -7 -4 -3 -8 -8 -8 -6 -3 -1 -2

Very difficult

11

-5 -13 -2 -18 -8 -16 -20 -30 -17 -11 -22 -3

These days, many families in Alaska have difficulty affording basic things they need, like food, clothing, transportation or housing. In the past year, how difficult has it been for your family to get the basic things you need?

Not at all difficult

80

0 +2 0 +3 +2

Somewhat difficult

94

0 -2 +1 +1 -3

Very difficult

18

-6 +1 -5 -16 +3

Families

Insight # 2 [Background Questions] Students in 8th grade felt the most connected and favorable to school climate, while students in 9 and 11th grade felt the least connected and favorable to school climate.



2023 School Climate &
Connectedness Survey 2023
Grade 6-12 Student Survey

Group Name

Group Size

Caring Adults
Community Support
Cultural Connectedness
Family and Community
Involvement
High Expectations
Peer Climate
Respectful Climate
School Safety
Social and Emotional
Learning (Grades 6-12)
Student Involvement
Student Risk Behaviors:
Delinquent Behaviors
Student Risk Behaviors:
Drug and Alcohol Use

All respondents

380

59% 64% 57% 75% 67% 31% 50% 64% 70% 50% 86% 90%

What grade are you in?

6

89

+4

-2

+10

0

+5

+6

-5

-2

0

+6

-1

+5

7

69

0

0

-1

+1

-3

+1

-3

-5

-1

-2

+2

+3

8

74

+1

+5

-2

+8

+6

+1

+6

+6

+3

+5

+3

+4

9

67

-3

+1

-3

-4

-6

-8

-5

-2

-7

-8

-5

-5

10

48

-4

-4

0

-1

+2

-6

+8

+2

+1

-1

+2

-3

11

20

-7

+1

-13

-10

-6

-3

-5

-3

0

-10

+2

-12

12

13

-2

-4

-11

-6

-1

+8

+8

+15

+2

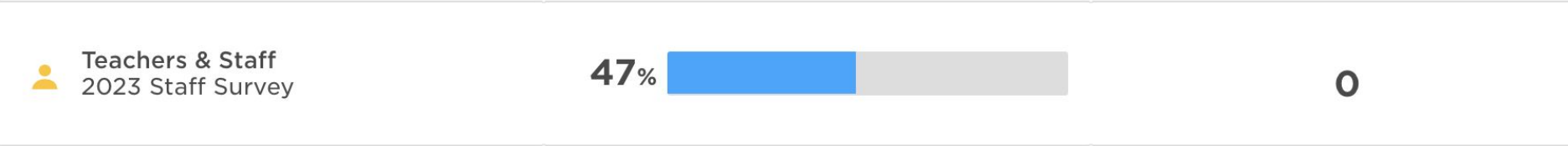
0

+5

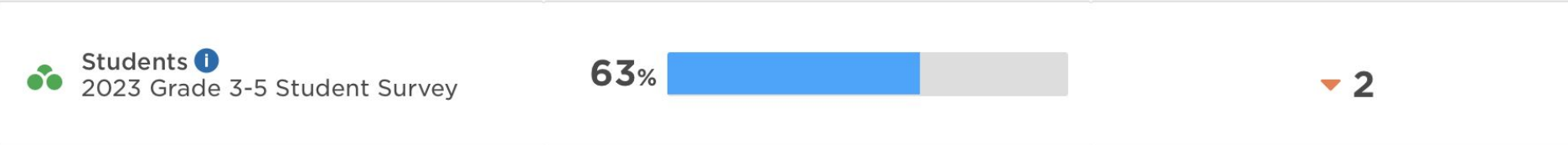
-5

Insight # 3 Social Emotional Learning and Peer Climate were the two areas with the largest disparity between students and staff.

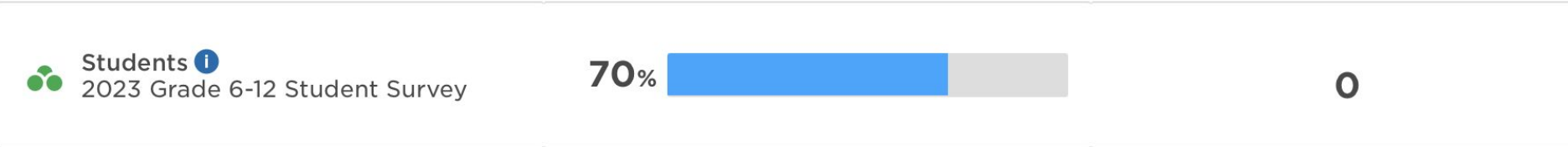
Social and Emotional Learning



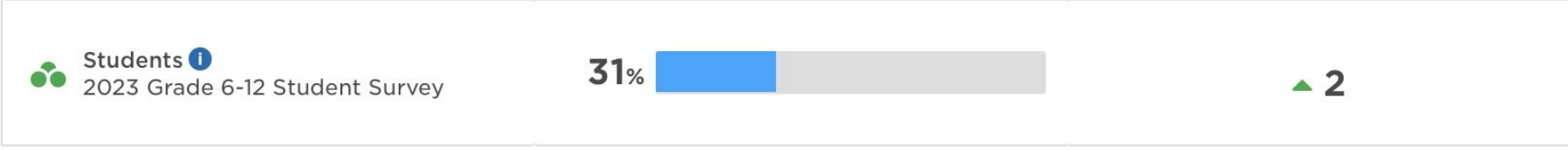
Social and Emotional Learning (Grades 3-5)



Social and Emotional Learning (Grades 6-12)



Peer Climate



Northwest Arctic School District Highlights

Cultural Connectedness

 Family Members 
2023 Family Survey



 **9**
Greatest increase

 Teachers & Staff 
2023 Staff Survey



 **1**

 Students 
2023 Grade 6-12 Student Survey



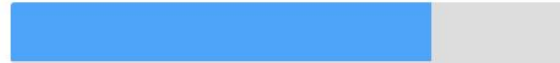
 **7**

Northwest Arctic Borough School District Highlights

Family and Community Involvement

 **Students** 
2023 Grade 6-12 Student Survey

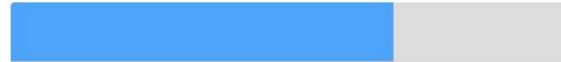
75%



Family/school partnership - school capacity

 **Family Members**
2023 Family Survey

68%



 **Teachers & Staff**
2023 Staff Survey

58%



Northwest Arctic Borough School District Highlights

Caring Adults



Caring for Others (Grades 3-5)



Staff to Student Relationships



Northwest Arctic Borough School District Highlights

Together Look at Your Data

Think About:

- What do you see?/What stands out to you?
- What was encouraging?
- What was concerning?



Group Share Out

What are your students, families, and staff telling you about their experience in school?



Using SCCS for Future Planning

Think About:

- Where do you see opportunities for growth?
- What areas of your current strategic plan align with?
- As you look to the future and the development of a new strategic plan - how does this data fit in?

Our Recommendations

To increase survey participation & in turn stronger results:

- **Explore the rest of your district results** - results are available in the Panorama Education platform (district public link).
- **Share results with rest of your school communities** (school advisory councils, staff, students and community)
- **Communication:** Clear communication and transparency. Reach out to families & staff to share importance of survey and ask them to participate and as well as providing explanations for decisions. Send updates to families and receive communications through multiple channels.
- **Use results in your district & school planning:** Strategic Planning, Vision & Goal-Setting
- **Ensure District Policies** are supportive of positive school climates. (AASB (AASB Model School Climate Policy)

Accessing Your SCCS Results

NWABSD Public Link:

https://secure.panoramaed.com/aasb/understand?auth_token=northwestarcticborough

Results

Browse survey results for:



Participating Alaska
Districts



Northwest Arctic
Borough School District



12 Schools

Ambler School

Aqqaluk High/Noorvik
Elementary

Buckland School

Davis-Ramoth School

Deering School

June Nelson Elementary
School

Kiana School

Kobuk School

Kotzebue Middle/High School

McQueen School

Napaaqtugmiut School

Shungnak School



AFEC



Thank you!

Kami Moore, School Climate and Connectedness Coordinator -
kmoore@aasb.org