



# Collin College

2017 Capital Improvement Program  
Monthly Report  
November 2017

Collin County Community College District

Project Reference: 60541060  
Project Number: 60541060

November 28, 2017

### Quality information

Prepared by



Nick Fiehler  
Program Controls Manager

Checked by



Adrian Grimes  
Deputy Program Director

Approved by



David Dailey  
Program Director

### Revision History

Revision	Revision date	Details	Authorized	Name	Position
First Publication	11/28/2017	November Report	Yes	David Dailey	Program Director

### Distribution List

# Hard Copies	PDF Required	Association / Company Name
1	1	Ken Lynn / Collin College
1	1	Bill King / Collin College

**Prepared for:**

Collin County Community College District  
3452 Spur 399  
Suite 327  
McKinney, TX 75069

**Prepared by:**

Nick Fiehler  
Program Controls Manager  
E: [nfiehler.aecom@collin.edu](mailto:nfiehler.aecom@collin.edu)

AECOM  
1950 N Stemmons Freeway  
Suite 600  
Dallas TX, 75207  
[aecom.com](http://aecom.com)

Copyright © 2017 by AECOM

All rights reserved. No part of this copyrighted work may be reproduced, distributed, or transmitted in any form or by any means without the prior written permission of AECOM.

# Table of Contents

- 1. Introduction ..... 5
- 2. **Executive Summary** ..... **5**
- 3. Scope..... 5
  - 3.1 Phase 1 ..... 5
  - 3.2 Phase 2 ..... 6
  - 3.3 Phase 3 ..... 6
  - 3.4 Phase 4 ..... 6
- 4. Community..... 7
  - 4.1 Project Teams ..... 7
    - 4.1.1 Phase 1 ..... 7
    - 4.1.2 Phase 2 ..... 7
    - 4.1.3 Phase 3 ..... 8
    - 4.1.4 Phase 4 ..... 8
  - 4.2 Current Personnel Estimate..... 9
  - 4.3 Community Outreach..... 9
- 5. Schedule..... 10
  - 5.1 Program..... 10
  - 5.2 Phase 1 ..... 10
  - 5.3 Phase 2 ..... 11
  - 5.4 Phase 3 ..... 12
  - 5.5 Phase 4 ..... 12
- 6. Budget ..... 13
  - 6.1 Program Summary..... 13
  - 6.2 Phase 1 ..... 13
  - 6.3 Phase 2 ..... 14
  - 6.4 Phase 3 ..... 15
  - 6.5 Phase 4 ..... 15
  - 6.6 Building Fund Reimbursement ..... 16
- 7. Completed Items..... 17
  - 7.1 General Program ..... 17
  - 7.2 Procurement..... 17
  - 7.3 Design ..... 17
  - 7.4 Pre-Construction..... 18
  - 7.5 Construction ..... 18
  - 7.6 Acceptance and Close-Out..... 18
- 8. Pending Items..... 18
  - 8.1 General Program ..... 18
  - 8.2 Procurement..... 18
  - 8.3 Design ..... 18
  - 8.4 Pre-Construction..... 18
  - 8.5 Construction ..... 18
  - 8.6 Acceptance and Close-Out..... 19
- Appendix A – Schedule Milestone Definitions ..... 20

# 1. Introduction

On May 6, 2017, voters approved Collin College's \$600 million bond proposal to facilitate a long-range plan to accommodate the projected population growth in Collin County over the next two decades. The program consists of 4 new campuses, 3 new facilities, 2 repurposed existing spaces, and 3 wayfinding projects (on existing sites). The program is scheduled to be completed in 4 phases over 7 years with projects opening in early 2020.

On May 16, 2017, in a special session, the Board of Trustees granted the District President authority to enter and negotiate into contract with AECOM Technical Services, Inc. (AECOM) to provide Program Management Services to the Collin College 2017 Capital Improvement Program. On May 25, 2017, Collin College issued a Notice to Proceed to AECOM. As part of these services, AECOM will deliver a monthly report to provide status and progress of key aspects of the Program.

## 2. Executive Summary

The Program is progressing as planned with no major issues to report at this time.

### Major activities

- Programming and conceptual designs for the Technical Campus and Wylie Campus are underway
- Deployment of the Collin College 2017 Capital Improvement Program Website is complete
- Procurement for commissioning services is underway
- AECOM, Perkins+Will, Inc., Page Southerland Page, Inc. continue to work closely with Collin College leadership and staff to define the scopes of the Wylie Campus and Technical Campus projects
- AECOM, Perkins+Will, Inc., Page Southerland Page, Inc. and their consulting engineers have been meeting with the City of Allen and City of Wylie to prepare each project for submission to receive approval by each municipality

### Items of close attention

- Approval by the City of Wylie of a traffic signal on the south side of the site
- Approval by the United States Army Corp of Engineers of wetlands mitigation for the Wylie Campus
- Coordination with the City of Allen to work around an approval timeframe that is not currently compatible with the scheduled commencement of construction for the Technical Campus

## 3. Scope

### 3.1 Phase 1

- Wylie Campus
  - Construction of a campus on a new approximately 97-acre site
  - The campus is planned to include:
    - Campus Commons
    - Learning Resource Center / Library
    - Student Center

- Conference Center
- Lab Building
- Instructional Building
- Student Union / Welcome Center / Library
- Technical Campus
  - Construction of a Technical Campus on a new 32-acre site in Allen, Texas
  - Programs planned for inclusion include:
    - Advanced Manufacturing, Aviation Technology, Construction, Health Science, Logistics and Transportation

### 3.2 Phase 2

- Celina Campus
  - Construction of a campus on a new approximately 75-acre site
  - The campus is planned to include:
    - Student Union / Workforce / Instructional Building
- Farmersville Campus
  - Construction of a campus on a new approximately 75-acre site
  - The campus is planned to include:
    - Student Union / Workforce / Instructional Building
- Preston Ridge Campus
  - Construction of a new facility on an existing campus
  - The campus is planned to include:
    - IT Center of Excellence

### 3.3 Phase 3

- Preston Ridge Campus
  - Construction of a new facility on an existing campus
  - The campus is planned to include:
    - Welcome Center
- Central Park Campus
  - Construction of a new facility on an existing campus
  - The campus is planned to include:
    - Welcome Center

### 3.4 Phase 4

- Preston Ridge Campus
  - Renovations / Repurposing of Existing Buildings
- Central Park Campus

- Renovations / Repurposing of Existing Buildings
- Central Park Campus
  - Traffic Infrastructure & Wayfinding
- Preston Ridge Campus
  - Wayfinding
- Spring Creek Campus
  - Wayfinding

## 4. Community

### 4.1 Project Teams

#### 4.1.1 Phase 1

- Wylie Campus
  - Program Manager: AECOM Technical Services, Inc. (under contract)
  - A/E: Page Southerland Page, Inc. (under contract)
    - MEP: Reed, Wells, Benson & Co.
    - Civil Engineer: Pacheco Koch Consulting Engineers, Inc.
  - Construction Manager-at-Risk: Skanska USA Building, Inc. (under contract)
- Technical Campus
  - Program Manager: AECOM Technical Services, Inc. (under contract)
  - A/E: Perkins+Will, Inc. (under contract)
    - Associate Architect: [Hoefler Wysocki Architecture](#)
    - MEP: Purdy McGuire
    - Civil Engineer: Pacheco Koch Consulting Engineers, Inc.
  - Construction Manager-at-Risk: McCarthy Building Companies, Inc. (under contract)

#### 4.1.2 Phase 2

- Celina Campus
  - Program Manager: (AECOM option expiration date: May 2018)
  - A/E: TBD
  - Construction Manager-at-Risk: TBD
- Farmersville Campus
  - Program Manager: (AECOM option expiration date: May 2018)
  - A/E: TBD
  - Construction Manager-at-Risk: TBD
- Preston Ridge Campus (IT Center of Excellence)

- Program Manager: (AECOM option expiration date: May 2018)
- A/E: TBD
- Construction Manager-at-Risk: TBD

#### 4.1.3 Phase 3

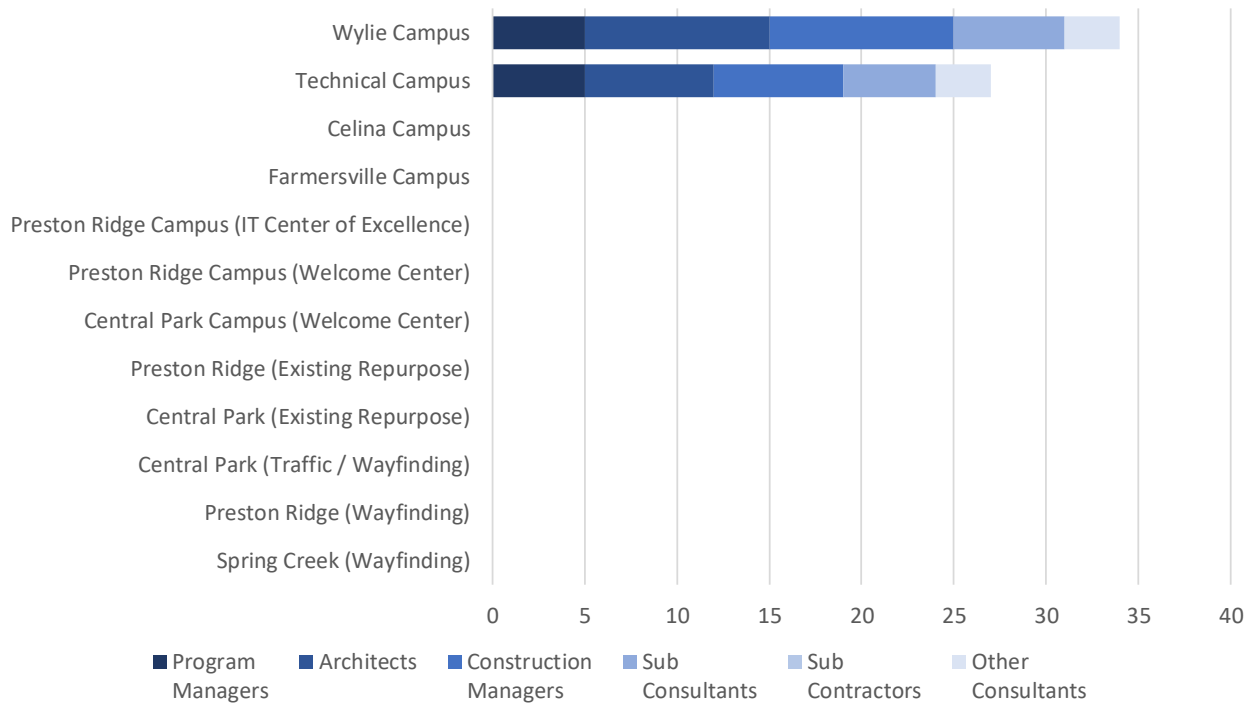
- Preston Ridge Campus (Welcome Center)
  - Program Manager: (AECOM option expiration date: August 2019)
  - A/E: TBD
  - Construction Manager-at-Risk: TBD
- Central Park Campus (Welcome Center)
  - Program Manager: (AECOM option expiration date: August 2019)
  - A/E: TBD
  - Construction Manager-at-Risk: TBD

#### 4.1.4 Phase 4

- Preston Ridge (Existing Repurpose)
  - Program Manager: (AECOM option expiration date: May 2021)
  - A/E: TBD
  - Construction Manager-at-Risk: TBD
- Central Park (Existing Repurpose)
  - Program Manager: (AECOM option expiration date: May 2021)
  - A/E: TBD
  - Construction Manager-at-Risk: TBD
- Central Park (Traffic / Wayfinding)
  - Program Manager: (AECOM option expiration date: May 2021)
  - A/E: TBD
  - Construction Manager-at-Risk: TBD
- Preston Ridge (Wayfinding)
  - Program Manager: (AECOM option expiration date: May 2021)
  - A/E: TBD
  - Construction Manager-at-Risk: TBD
- Spring Creek (Wayfinding)
  - Program Manager: (AECOM option expiration date: May 2021)
  - A/E: TBD
  - Construction Manager-at-Risk: TBD



## 4.2 Current Personnel Estimate



It is estimated that the Program Managers, Architects, Construction Managers, Sub-Consultants, and Sub-Contractors, under contract with Collin College for the 2017 Capital Improvement Program, have 61 employees contributing to the program’s progress.

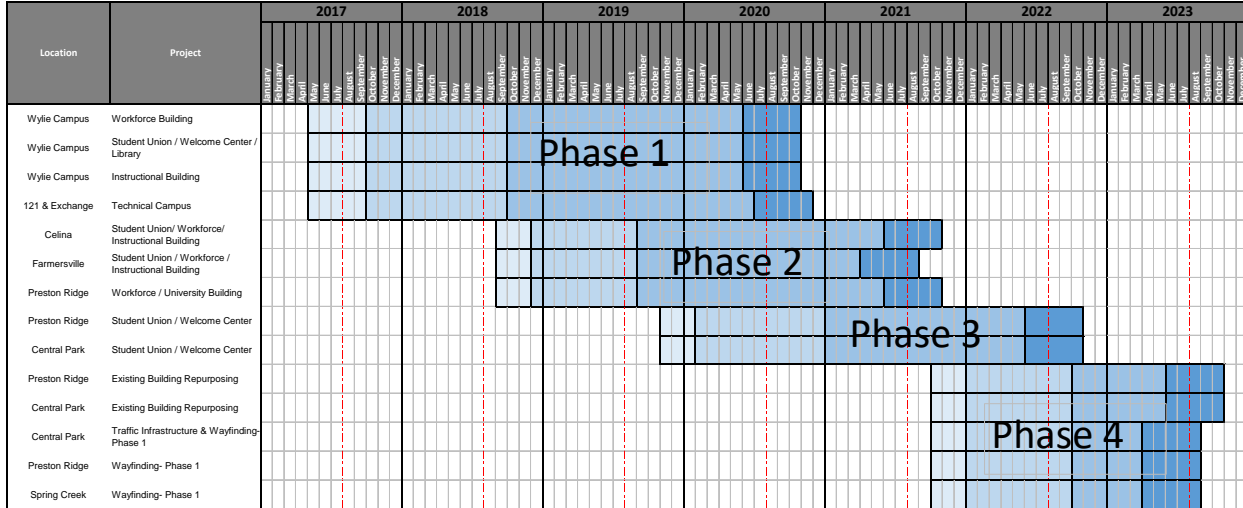
## 4.3 Community Outreach

- Collin College 2017 Capital Improvement Program Website;
  - o <https://CollinCollege2017CIP.com>
  - o Includes the following features:
    - Program Overview
    - Project Scopes
    - Project Schedules
    - Project Budgets
    - Progress Photos/Renderings
    - Live On-Site Camera Feeds

# 5. Schedule

Appendix A – Schedule Milestone Definitions includes listing of milestones and definitions

## 5.1 Program



## 5.2 Phase 1

### Wylie Campus

Activity	Baseline Finish	Planned Finish		Actual Finish	
BOT Approval of Program Manager	May 16, 2017	May 16, 2017	↑	May 16, 2017	✓
BOT Approval of A/E Procurement Method	May 23, 2017	May 23, 2017	↑	May 23, 2017	✓
BOT Approval of Construction Delivery Method	May 23, 2017	May 23, 2017	↑	May 23, 2017	✓
BOT Approval of Recommended Firms	August 22, 2017	August 22, 2017	↑	August 22, 2017	✓
Architect Mobilized	September 12, 2017	September 29, 2017	↓	September 28, 2017	✓
Schematic Design Submittal	January 10, 2017	January 10, 2017	↑	-	
Design Development Submittal	March 11, 2018	March 11, 2018	↑	-	
Construction Document Submittal	July 19, 2018	July 19, 2018	↑	-	
BOT Approval of GMP (Site)	April 24, 2018	April 24, 2018	↑	-	
Contractor Mobilized	May 1, 2018	May 1, 2018	↑	-	
BOT Approval of GMP (Facility)	TBD	TBD		-	
Foundations Complete	TBD	TBD		-	
Building Top Out	TBD	TBD		-	
Building Dry-In	TBD	TBD		-	
Building Energized	TBD	TBD		-	
Building Climatized	TBD	TBD		-	
Temporary CO	TBD	TBD		-	
Final CO	TBD	TBD		-	
Substantial Completion	May 1, 2020	May 1, 2020	↑	-	
Final Completion	July 1, 2020	July 1, 2020	↑	-	
Student Occupancy	August 2020	August 2020	↑	-	

### Technical Campus

Activity	Baseline Finish	Planned Finish		Actual Finish	
BOT Approval of Program Manager	May 16, 2017	May 16, 2017	↑	May 16, 2017	✓
BOT Approval of A/E Procurement Method	May 23, 2017	May 23, 2017	↑	May 23, 2017	✓
BOT Approval of Construction Delivery Method	May 23, 2017	May 23, 2017	↑	May 23, 2017	✓
BOT Approval of Recommended Firms	August 22, 2017	August 22, 2017	↑	August 22, 2017	✓
Architect Mobilized	September 12, 2017	September 29, 2017	↓	September 28, 2017	✓
Schematic Design Submittal	December 6, 2017	December 6, 2017	↑	-	
Design Development Submittal	April 4, 2018	April 4, 2018	↑	-	
Construction Document Submittal	September 12, 2018	September 12, 2017	↑	-	
BOT Approval of GMP (Site)	May 22, 2018	May 22, 2018	↑	-	
Contractor Mobilized	June 1, 2018	June 1, 2018	↑	-	
BOT Approval of GMP (Facility)	TBD	TBD		-	
Foundations Complete	TBD	TBD		-	
Building Top Out	TBD	TBD		-	
Building Dry-In	TBD	TBD		-	
Building Energized	TBD	TBD		-	
Building Climatized	TBD	TBD		-	
Temporary CO	TBD	TBD		-	
Final CO	TBD	TBD		-	
Substantial Completion	May 1, 2020	May 1, 2020	↑	-	
Final Completion	July 1, 2020	July 1, 2020	↑	-	
Student Occupancy	August 2020	August 2020	↑	-	

### 5.3 Phase 2

#### Celina Campus

Activity	Baseline Finish	Planned Finish		Actual Finish	
BOT Approval of Program Manager	September 2018	September 2018	↑	-	
BOT Approval of A/E Procurement Method	September 2018	September 2018	↑	-	
BOT Approval of Construction Delivery Method	September 2018	September 2018	↑	-	
Student Occupancy	August 2021	August 2021	↑	-	

#### Farmersville Campus

Activity	Baseline Finish	Planned Finish		Actual Finish	
BOT Approval of Program Manager	September 2018	September 2018	↑	-	
BOT Approval of A/E Procurement Method	September 2018	September 2018	↑	-	
BOT Approval of Construction Delivery Method	September 2018	September 2018	↑	-	
Student Occupancy	August 2021	August 2021	↑	-	

#### Preston Ridge Campus (IT Center of Excellence)

Activity	Baseline Finish	Planned Finish		Actual Finish	
BOT Approval of Program Manager	September 2018	September 2018	↑	-	
BOT Approval of A/E Procurement Method	September 2018	September 2018	↑	-	
BOT Approval of Construction Delivery Method	September 2018	September 2018	↑	-	
Student Occupancy	August 2021	August 2021	↑	-	

## 5.4 Phase 3

### Preston Ridge Campus (Welcome Center)

Activity	Baseline Finish	Planned Finish		Actual Finish
BOT Approval of Program Manager	November 2019	November 2019	↑	-
BOT Approval of A/E Procurement Method	November 2019	November 2019	↑	-
BOT Approval of Construction Delivery Method	November 2019	November 2019	↑	-
Student Occupancy	August 2022	August 2022	↑	-

### Central Park Campus (Welcome Center)

Activity	Baseline Finish	Planned Finish		Actual Finish
BOT Approval of Program Manager	November 2019	November 2019	↑	-
BOT Approval of A/E Procurement Method	November 2019	November 2019	↑	-
BOT Approval of Construction Delivery Method	November 2019	November 2019	↑	-
Student Occupancy	August 2022	August 2022	↑	-

## 5.5 Phase 4

### Preston Ridge (Existing Repurpose)

Activity	Baseline Finish	Planned Finish		Actual Finish
BOT Approval of Program Manager	October 2021	October 2021	↑	-
BOT Approval of A/E Procurement Method	October 2021	October 2021	↑	-
BOT Approval of Construction Delivery Method	October 2021	October 2021	↑	-
Student Occupancy	August 2023	August 2023	↑	-

### Central Park (Existing Repurpose)

Activity	Baseline Finish	Planned Finish		Actual Finish
BOT Approval of Program Manager	October 2021	October 2021	↑	-
BOT Approval of A/E Procurement Method	October 2021	October 2021	↑	-
BOT Approval of Construction Delivery Method	October 2021	October 2021	↑	-
Student Occupancy	August 2023	August 2023	↑	-

### Central Park (Traffic / Wayfinding)

Activity	Baseline Finish	Planned Finish		Actual Finish
BOT Approval of Program Manager	October 2021	October 2021	↑	-
BOT Approval of A/E Procurement Method	October 2021	October 2021	↑	-
BOT Approval of Construction Delivery Method	October 2021	October 2021	↑	-
Student and Staff Use	August 2023	August 2023	↑	-

### Preston Ridge (Wayfinding)

Activity	Baseline Finish	Planned Finish		Actual Finish
BOT Approval of Program Manager	October 2021	October 2021	↑	-
BOT Approval of A/E Procurement Method	October 2021	October 2021	↑	-
BOT Approval of Construction Delivery Method	October 2021	October 2021	↑	-
Student and Staff Use	August 2023	August 2023	↑	-

## Spring Creek (Wayfinding)

Activity	Baseline Finish	Planned Finish		Actual Finish
BOT Approval of Program Manager	October 2021	October 2021	↑	-
BOT Approval of A/E Procurement Method	October 2021	October 2021	↑	-
BOT Approval of Construction Delivery Method	October 2021	October 2021	↑	-
Student and Staff Use	August 2023	August 2023	↑	-

## 6. Budget

### 6.1 Program Summary

#### Program Wide Budget

Budget Group	Original Budget	Current Budget	Commitments	Expenditures	% of Budget Committed	% of Commitment Expended
Management, Design, & Pre-Construction	\$105,160,598	\$100,214,017	\$24,565,900	\$2,247,071	25%	9%
Investigation, Testing & Verification	\$9,330,450	\$9,330,450	\$98,210	\$34,210	1%	35%
Construction, Equipment & Furnishings	\$463,778,252	\$475,778,252	\$0	\$0	0%	0%
Misc.	\$439,079	\$452,778	\$17,880	\$13,699	4%	77%
Contingency	\$21,291,621	\$26,224,504	\$0	\$0	0%	0%
<b>Total Project Budget</b>	<b>\$600,000,000</b>	<b>\$600,000,000</b>	<b>\$24,681,990</b>	<b>\$2,294,979</b>		
% of Total Project Budget Committed	<b>4.11%</b>					
% of Total Commitments Expended	<b>9.30%</b>					
% of Total Project Budget Expended	<b>0.38%</b>					

### 6.2 Phase 1

#### Wylie Campus

Budget Group	Original Budget	Current Budget	Commitments	Expenditures	% of Budget Committed	% of Commitment Expended
Management, Design, & Pre-Construction	\$15,051,440	\$12,685,467	\$12,575,145	\$1,464,092	99%	12%
Investigation, Testing & Verification	\$2,679,247	\$2,679,247	\$68,650	\$8,100	3%	12%
Construction, Equipment & Furnishings	\$133,174,284	\$133,174,284	\$0	\$0	0%	0%
Misc.	\$126,082	\$132,931	\$7,582	\$6,849	6%	90%
Contingency	\$6,571,649	\$8,930,773	\$0	\$0	0%	0%
<b>Total Project Budget</b>	<b>\$157,602,702</b>	<b>\$157,602,702</b>	<b>\$12,651,377</b>	<b>\$1,479,041</b>		
% of Total Project Budget Committed	<b>8.03%</b>					
% of Total Commitments Expended	<b>11.69%</b>					
% of Total Project Budget Expended	<b>0.94%</b>					

### Technical Campus

Budget Group	Original Budget	Current Budget	Commitments	Expenditures	% of Budget Committed	% of Commitment Expended
Management, Design, & Pre-Construction	\$14,713,206	\$12,132,598	\$11,990,755	\$782,979	99%	7%
Investigation, Testing & Verification	\$2,619,039	\$2,619,039	\$29,560	\$26,110	1%	88%
* Construction, Equipment & Furnishings	\$130,181,602	\$142,181,602	\$0	\$0	0%	0%
Misc.	\$123,249	\$130,098	\$8,832	\$6,849	7%	78%
Contingency	\$6,423,972	\$8,997,731	\$0	\$0	0%	0%
Allen ISD Reimbursement	-	(\$12,000,000)	-	-		
<b>Total Project Budget</b>	<b>\$154,061,068</b>	<b>\$154,061,068</b>	<b>\$12,029,147</b>	<b>\$815,938</b>		
% of Total Project Budget Committed	<b>7.81%</b>					
% of Total Commitments Expended	<b>6.78%</b>					
% of Total Project Budget Expended	<b>0.53%</b>					

\* Actual Budget from Collin College bond funds is \$130,181,602 (\$142,181,602 less \$12,000,000 Allen ISD Reimbursement)

### 6.3 Phase 2

#### Celina Campus

Budget Group	Original Budget	Current Budget	Commitments	Expenditures	% of Budget Committed	% of Commitment Expended
<b>Total Project Budget</b>	<b>\$55,112,263</b>	<b>\$55,112,263</b>	<b>\$733</b>	<b>\$0</b>		
% of Total Project Budget Committed	<b>0.00%</b>					
% of Total Commitments Expended	<b>0.00%</b>					
% of Total Project Budget Expended	<b>0.00%</b>					

#### Farmersville Campus

Budget Group	Original Budget	Current Budget	Commitments	Expenditures	% of Budget Committed	% of Commitment Expended
<b>Total Project Budget</b>	<b>\$27,556,132</b>	<b>\$27,556,132</b>	<b>\$733</b>	<b>\$0</b>		
% of Total Project Budget Committed	<b>0.00%</b>					
% of Total Commitments Expended	<b>0.00%</b>					
% of Total Project Budget Expended	<b>0.00%</b>					

#### Preston Ridge Campus (IT Center of Excellence)

Budget Group	Original Budget	Current Budget	Commitments	Expenditures	% of Budget Committed	% of Commitment Expended
<b>Total Project Budget</b>	<b>\$59,388,215</b>	<b>\$59,388,215</b>	<b>\$0</b>	<b>\$0</b>		
% of Total Project Budget Committed	<b>0.00%</b>					
% of Total Commitments Expended	<b>0.00%</b>					
% of Total Project Budget Expended	<b>0.00%</b>					

## 6.4 Phase 3

### Preston Ridge Campus (Welcome Center)

Budget Group	Original Budget	Current Budget	Commitments	Expenditures	% of Budget Committed	% of Commitment Expended
<b>Total Project Budget</b>	<b>\$26,329,788</b>	<b>\$26,329,788</b>	<b>\$0</b>	<b>\$0</b>		
% of Total Project Budget Committed	0.00%					
% of Total Commitments Expended	0.00%					
% of Total Project Budget Expended	0.00%					

### Central Park Campus (Welcome Center)

Budget Group	Original Budget	Current Budget	Commitments	Expenditures	% of Budget Committed	% of Commitment Expended
<b>Total Project Budget</b>	<b>\$36,861,704</b>	<b>\$36,861,704</b>	<b>\$0</b>	<b>\$0</b>		
% of Total Project Budget Committed	0.00%					
% of Total Commitments Expended	0.00%					
% of Total Project Budget Expended	0.00%					

## 6.5 Phase 4

### Preston Ridge (Existing Repurpose)

Budget Group	Original Budget	Current Budget	Commitments	Expenditures	% of Budget Committed	% of Commitment Expended
<b>Total Project Budget</b>	<b>\$7,321,091</b>	<b>\$7,321,091</b>	<b>\$0</b>	<b>\$0</b>		
% of Total Project Budget Committed	0.00%					
% of Total Commitments Expended	0.00%					
% of Total Project Budget Expended	0.00%					

### Central Park (Existing Repurpose)

Budget Group	Original Budget	Current Budget	Commitments	Expenditures	% of Budget Committed	% of Commitment Expended
<b>Total Project Budget</b>	<b>\$9,151,364</b>	<b>\$9,151,364</b>	<b>\$0</b>	<b>\$0</b>		
% of Total Project Budget Committed	0.00%					
% of Total Commitments Expended	0.00%					
% of Total Project Budget Expended	0.00%					

**Central Park (Traffic / Wayfinding)**

Budget Group	Original Budget	Current Budget	Commitments	Expenditures	% of Budget Committed	% of Commitment Expended
<b>Total Project Budget</b>	<b>\$7,826,795</b>	<b>\$7,826,795</b>	<b>\$0</b>	<b>\$0</b>		
% of Total Project Budget Committed	0.00%					
% of Total Commitments Expended	0.00%					
% of Total Project Budget Expended	0.00%					

**Preston Ridge (Wayfinding)**

Budget Group	Original Budget	Current Budget	Commitments	Expenditures	% of Budget Committed	% of Commitment Expended
<b>Total Project Budget</b>	<b>\$2,546,293</b>	<b>\$2,546,293</b>	<b>\$0</b>	<b>\$0</b>		
% of Total Project Budget Committed	0.00%					
% of Total Commitments Expended	0.00%					
% of Total Project Budget Expended	0.00%					

**Spring Creek (Wayfinding)**

Budget Group	Original Budget	Current Budget	Commitments	Expenditures	% of Budget Committed	% of Commitment Expended
<b>Total Project Budget</b>	<b>\$5,092,585</b>	<b>\$5,092,585</b>	<b>\$0</b>	<b>\$0</b>		
% of Total Project Budget Committed	0.00%					
% of Total Commitments Expended	0.00%					
% of Total Project Budget Expended	0.00%					

**6.6 Building Fund Reimbursement**

**Building Fund Reimbursement**

Budget Group	Original Budget	Current Budget	Commitments	Expenditures	% of Budget Committed	% of Commitment Expended
<b>Building Fund Reimbursement</b>	<b>\$51,150,000</b>	<b>\$51,150,000</b>	<b>\$0</b>	<b>\$0</b>	<b>\$0</b>	<b>\$0</b>
<b>Total Project Budget</b>	<b>\$51,150,000</b>	<b>\$51,150,000</b>	<b>\$0</b>	<b>\$0</b>		
% of Total Project Budget Committed	0.00%					
% of Total Commitments Expended	0.00%					
% of Total Project Budget Expended	0.00%					



## 7. Completed Items

### 7.1 General Program

- AECOM conducted Coordination Meetings with Collin College Leadership and Procurement on November 6<sup>th</sup>, 13<sup>th</sup>, 20<sup>th</sup>, & 27<sup>th</sup>
- The Facility Standards (v1.2) was approved by Collin College Leadership on November 8<sup>th</sup>
- AECOM provided an overview of the October Monthly Report to the Collin Campus Facilities & Construction Committee on November 7<sup>th</sup>
- AECOM provided an overview of the Program Website to the Collin Campus Facilities & Construction Committee on November 7<sup>th</sup>
- The Collin College 2017 Capital Improvement Program Website went live to the Public on November 8<sup>th</sup>
- AECOM provided an overview of the Program Website to the Collin College Board of Trustees on November 14<sup>th</sup>

### 7.2 Procurement

- AECOM and Collin College Procurement debriefed PBK Architects, Inc. on Phase 1 procurement on November 2<sup>nd</sup>
- Collin College Procurement received responses to RFQ #4107 for Commissioning Services on November 3<sup>rd</sup>
- AECOM and Collin College evaluated Statements of Qualification for RFQ #4107 for Commissioning Services between November 3<sup>rd</sup> and November 13<sup>th</sup>
- AECOM and Collin College Procurement entered the scoring data from the evaluations of RFQ #4107 for Commissioning Services and identified top ranked firms on November 14<sup>th</sup>
- AECOM, Page Southerland Page, Inc., and Pacheco Koch Consulting Engineers, Inc. met with the City of Wylie to discuss the site plan and utility distribution on November 14<sup>th</sup>

### 7.3 Design

- Page Southerland Page, Inc. conducted a half-day Space List & Stacking Workshop with AECOM and Collin College for the Wylie Campus on November 1<sup>st</sup>
- Perkins+Will, Inc. conducted a Parking Options Workshop with AECOM and Collin College for the Technical Campus on November 9<sup>th</sup>
- AECOM, Page Southerland Page, Inc., and Reed, Wells, Benson & Co. (the Mechanical, Electrical & Plumbing Engineer under Page Southerland Page, Inc.) conducted a Utility Distribution Workshop with Collin College for the Wylie Campus on November 13<sup>th</sup>
- AECOM, Page Southerland Page, Inc. and Perkins+Will conducted an Information Technology, Fiber and Security workshop with Collin College on November 13<sup>th</sup>
- AECOM, Page Southerland Page, Inc., and Pacheco Koch Consulting Engineers, Inc. (the Civil Engineer under Page Southerland Page, Inc.) conducted a Site Plan and Utility Distribution Workshop with the City of Wylie for the Wylie Campus on November 14<sup>th</sup>
- Page Southerland Page, Inc. conducted a half-day Design Workshop with AECOM and Collin College for the Wylie Campus on November 15<sup>th</sup>
- Perkins+Will, Inc. conducted a half-day Design Workshop with AECOM and Collin College for the Wylie Campus on November 16<sup>th</sup>

- [AECOM conducted a project schedule workshop with Page Southerland Page, Inc. for the Wylie Campus on November 21<sup>st</sup>](#)
- [AECOM conducted a project USACE application workshop with Page Southerland Page, Inc. for the Wylie Campus on November 21<sup>st</sup>](#)
- [Perkins+Will, Inc. conducted a Site and Main Entry Options Workshop with AECOM and Collin College for the Technical Campus on November 27<sup>th</sup>](#)

## 7.4 Pre-Construction

- [AECOM conducted a project schedule workshop for the Wylie Campus on November 21<sup>st</sup>](#)

## 7.5 Construction

- No Construction activities are underway at this time

## 7.6 Acceptance and Close-Out

- No Acceptance and Close-Out Phase Items are complete

# 8. Pending Items

## 8.1 General Program

- Development of a Program Procedures Manual (PPM) is under development

## 8.2 Procurement

- [Solicitation, receipt, and review of proposals from top ranked commissioning firms](#)
- [Recommendation of commissioning services proposals to the Board of Trustees for approval](#)

## 8.3 Design

- Completion and acceptance of programming for the Wylie Campus
- Completion and acceptance of programming for the Technical Campus
- [Completion and acceptance of Schematic Design for the Wylie Campus](#)
- [Completion and acceptance of Schematic Design for the Technical Campus](#)

## 8.4 Pre-Construction

- Development of a cost management plan & preliminary estimate are underway by Skanska USA Building, Inc. for the Wylie Campus
- Development of a cost management plan & preliminary estimate are underway by McCarthy Building Companies, Inc. for the Technical Campus

## 8.5 Construction

- [Demolition of existing structures is underway at the Wylie Campus location](#)

## 8.6 Acceptance and Close-Out

- No Acceptance and Close-Out activities are underway at this time

## Appendix A – Schedule Milestone Definitions

**BOT Approval of Program Manager** – Establishes that a project is Board of Trustees approved and the Program Manager shall begin efforts to complete the project.

**BOT Approval of A/E Procurement Method** – Approval by the Board of Trustees of the methods used to procure the Architect.

**BOT Approval of Construction Delivery Method** – Approval by the Board of Trustees of the construction delivery method. Typically Construction Manager-at-Risk or Competitive Sealed Proposal.

**BOT Approval of Recommended Firms** – Acceptance of firm recommendations by the Board of Trustees.

**Architect Mobilized** – Completion of negotiations, execution of contracts, and issuance of Notice to Proceed.

**Schematic Design Submittal** – Initial design schemes that seek to define the general scope and conceptual design of the project including scale and relationships between building components.

**Design Development Submittal** – Site Plans, Elevations & Floorplans that define and describe all important aspects of the project.

**Construction Document Submittal** – Detailed specifications, details, illustrations, and instructions on all aspects of the facility. Used to obtain project bids and to construct the facility.

**BOT Approval of GMP (Site)** – Board of Trustees approval of the Guaranteed Maximum Price to complete the site work.

**Contractor Mobilized** – Notice to Proceed issued for the Site Work. Contractor on site and ready to start.

**BOT Approval of GMP (Facility)** – Board of Trustees approval of the Guaranteed Maximum Price to complete the facility work.

**Foundations Complete** – Mass grading & piers complete, project. There after the project is less affected by rain, mud and subterranean conditions.

**Building Top Out** – All major structural components are in place (including the highest component) for the facility. Project less susceptible to material shortages or delays.

**Building Dry-In** – Roofing and windows are complete and the building is water resistant. The project overall is less susceptible to weather as most of the work is conducted indoors.

**Building Energized** – The building has power. This is an indication that utilities are in place, significant electrical work is complete, and many significant city inspections have been passed.

**Building Climatized** – The HVAC system is functional. Weather sensitive materials can be installed.

**Temporary CO** – The city has agreed that the building is significantly constructed in accordance with local codes and is occupiable. There may be outstanding landscaping requirements.

**Final CO** – The city has agreed that the building is constructed in accordance with local codes and is occupiable. There may be outstanding landscaping requirements

**Substantial Completion** – All materials are in place, all systems are functional, and the owner can use the building for its intended purpose with only minor punch-list items remaining. Warranties will commence.

**Final Completion** – All punchlist items are complete. The Contractor is complete.

**Student Occupancy** – Success!