



Resolution of the Board Regarding Hazardous Traffic Conditions

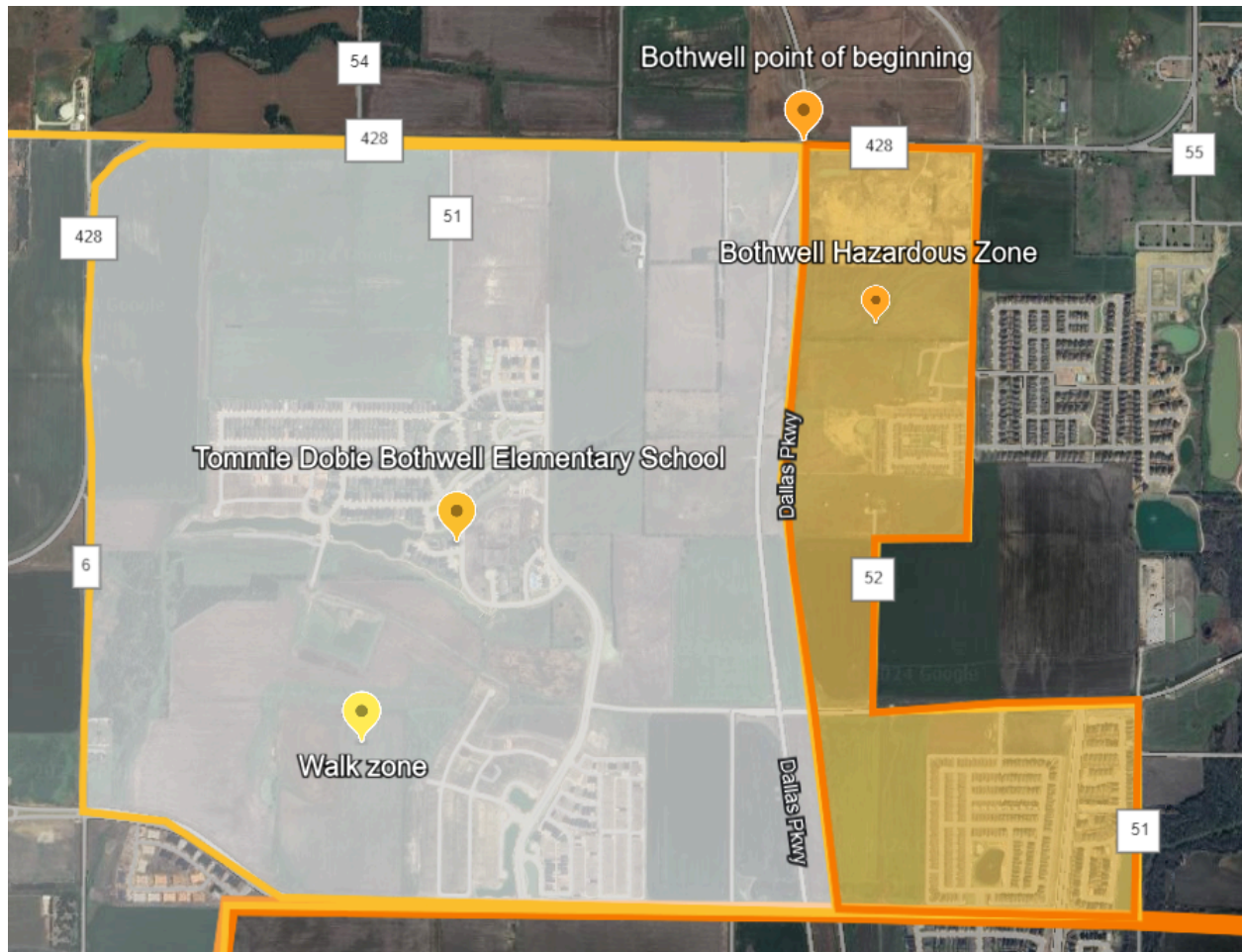
WHEREAS, Education Code 42.155(d) allows the Board of Trustees of Celina Independent School District to obtain supplemental state funding for transporting regular, otherwise ineligible students who live within two miles of their school but who would be subject to hazardous traffic conditions if they walked to school;

WHEREAS, the Texas Education Agency handbook on School Transportation Allotments requires the Board to adopt language providing the definition of hazardous traffic conditions applicable to the District and identifying the specific hazardous areas for which such funding is requested; and

WHEREAS, the Board acknowledges Education Code 42.155(d) provisions, stating that a hazardous condition exists where no walkway is provided and children must walk along or cross a freeway or expressway, an underpass, an overpass or a bridge, an uncontrolled major traffic artery, an industrial or commercial area, or another comparable condition;

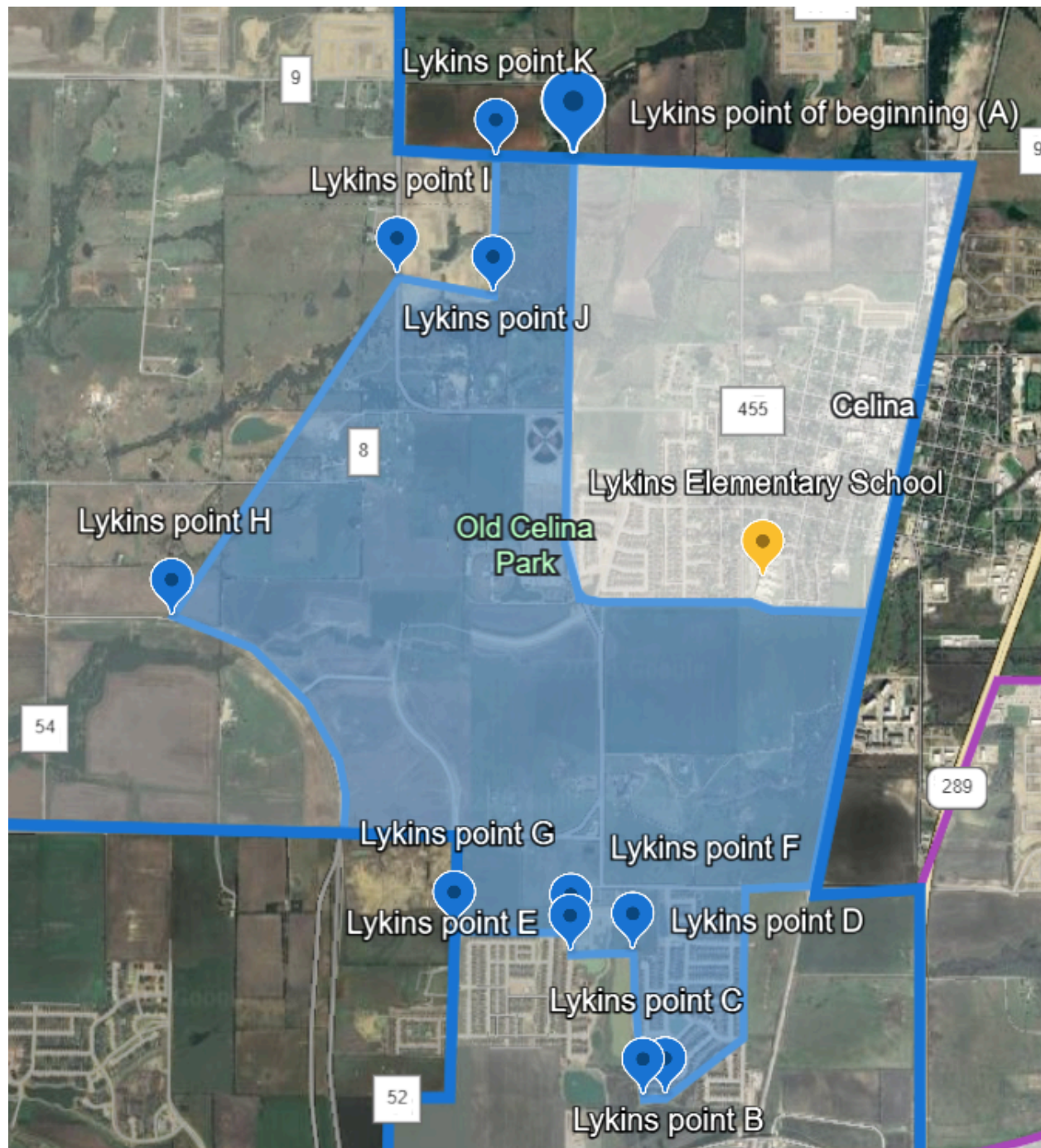
NOW, THEREFORE, BE IT RESOLVED that the Board of Trustees of Celina Independent School District has determined that a hazardous condition exists because there is no walkway where students must walk along or cross:

Bothwell Elementary Hazardous Area (Hazardous area is shown in orange and walkzone in white.)



Beginning at the intersection of Dallas Pkwy and FM 428, go east along FM 428 for 0.33 miles to the intersection of FM 428 and S Celina Pkwy. Then go south on S Celina Pkwy for 0.74 miles to the intersection of S Celina Pkwy and County Rd 52. Go west on County Rd 52 for 0.18 miles to where County Rd 52 curves to the south. Go south on County Rd 52 for 0.33 miles to the intersection of County Rd 52 and W Outer Loop. Go east on W Outer Loop for 0.51 miles to the intersection of W Outer Loop and County Rd 51. Go south on County Rd 51 for 0.42 miles to the district boundary. Go west along the district boundary for 0.59 miles to the intersection of Dallas Pkwy and W Punk Carter Pkwy. Go north on Dallas Pkwy for 1.49 miles to the point of beginning.

Lykins Elementary Hazardous Area (Area is shown in blue and walkzone in white.)

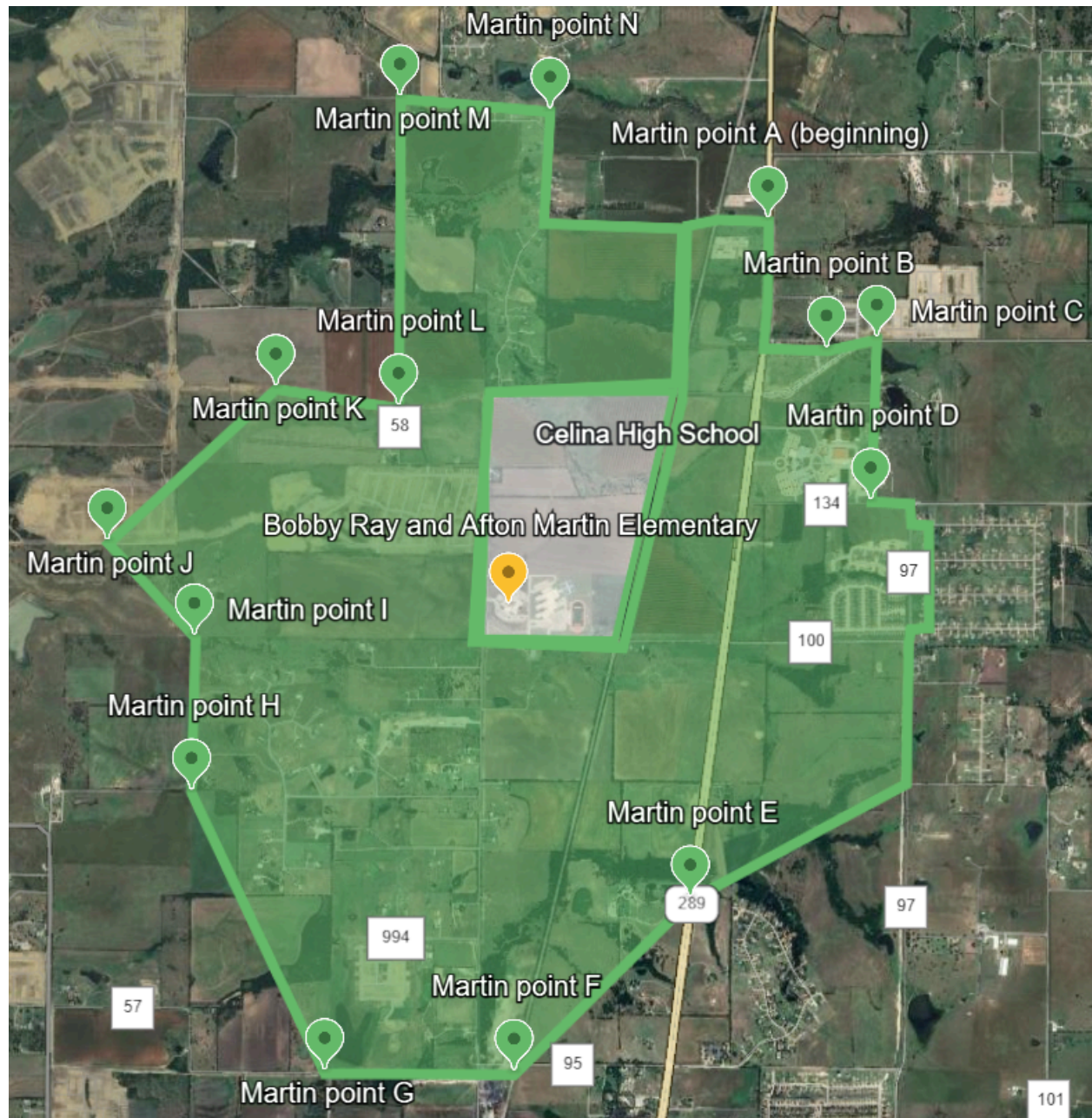


Beginning on County Road 57 at point A (33°20'07"N 96°48'04"W), go south across land with no road for 0.73 miles to the intersection of FM 428 and W FM 455. Go south on FM 428 for 0.59 miles to the intersection of FM 428 and W Sunset Blvd. Then go east on W Sunset Blvd for 0.82 miles to the intersection of W Sunset Blvd and railroad. Then go south along the railroad tracks to the intersection of the railroad and W Glendenning Pkwy. Then go west on W Glendenning Pkwy for 0.2 miles to the intersection of Glendenning Pkwy and County Road 1117. Then go

south on County Road 1117 for 0.43 miles to the intersection of County Road 1117 and Daldoran Dr. Go southwest for 0.28 miles across land with no road to the intersection of Lade Ct and St Andrews Dr at point B (33°17'45"N 96°47'47"W). Go west on Lade Ct for 317 feet to cul-de-sac on Lade Ct at point C (33°17'45"N 96°47'51"W). Go north for 0.42 miles to point D (33°18'07"N 96°47'53"W). Go west for 0.18 miles to point E (33°18'07"N 96°48'04"W). Go north on Emmanuel Lane for 0.06 miles to point F (33°18'10"N 96°48'04"W). Go west for 0.34 miles to point G (33°18'10"N 96°48'25"W) on S Celina Pkwy. Go north on S Celina Pkwy for 0.28 miles to the intersection of S Celina Pkwy and County Rd 428. Go west on County Rd 428 for 0.33 miles to the intersection of County Rd 428 and Dallas Pkwy. Go north on Dallas Pkwy which curves to the west for 0.86 miles to point H (33°18'57"N 96°49'16"W). Go northeast across land with no road to point I (33°19'49"N 96°48'35"W) on W FM 445. Go southeast across land for 0.28 miles to point J (33°19'46"N 96°48'18"W). Go north across land for 0.39 miles to point K (33°20'07"N 96°48'18"W). Go east for 0.22 miles to the point of beginning.

Beginning on E Outer Loop at point A (33°17'48"N 96°45'05"W), go south across land with no road for 0.85 miles to point B (33°17'03"N 96°45'05"W) which is a point on the district boundary. Go west for 2.7 miles following the district boundary until the district boundary intersects Hwy 289 (Preston Rd). Go north on Hwy 289 for 0.51 miles to the intersection of Hwy 289 and Ownsby Pkwy (Rd 83). Go east on Ownsby Pkwy (Rd 83) for 1.24 miles to the intersection of Ownsby Pkwy and Coit Rd (Rd 86). Go north on Coit Rd (Rd 86) for 0.81 miles to the intersection of Coit Rd and Choate Pkwy (Rd 88). Go west on Choate Pkwy (Rd 88) for 0.81 miles to the intersection of Choate Pkwy and E Outer Loop. Go east on E Outer Loop for 1.34 miles to the point of beginning (point A).

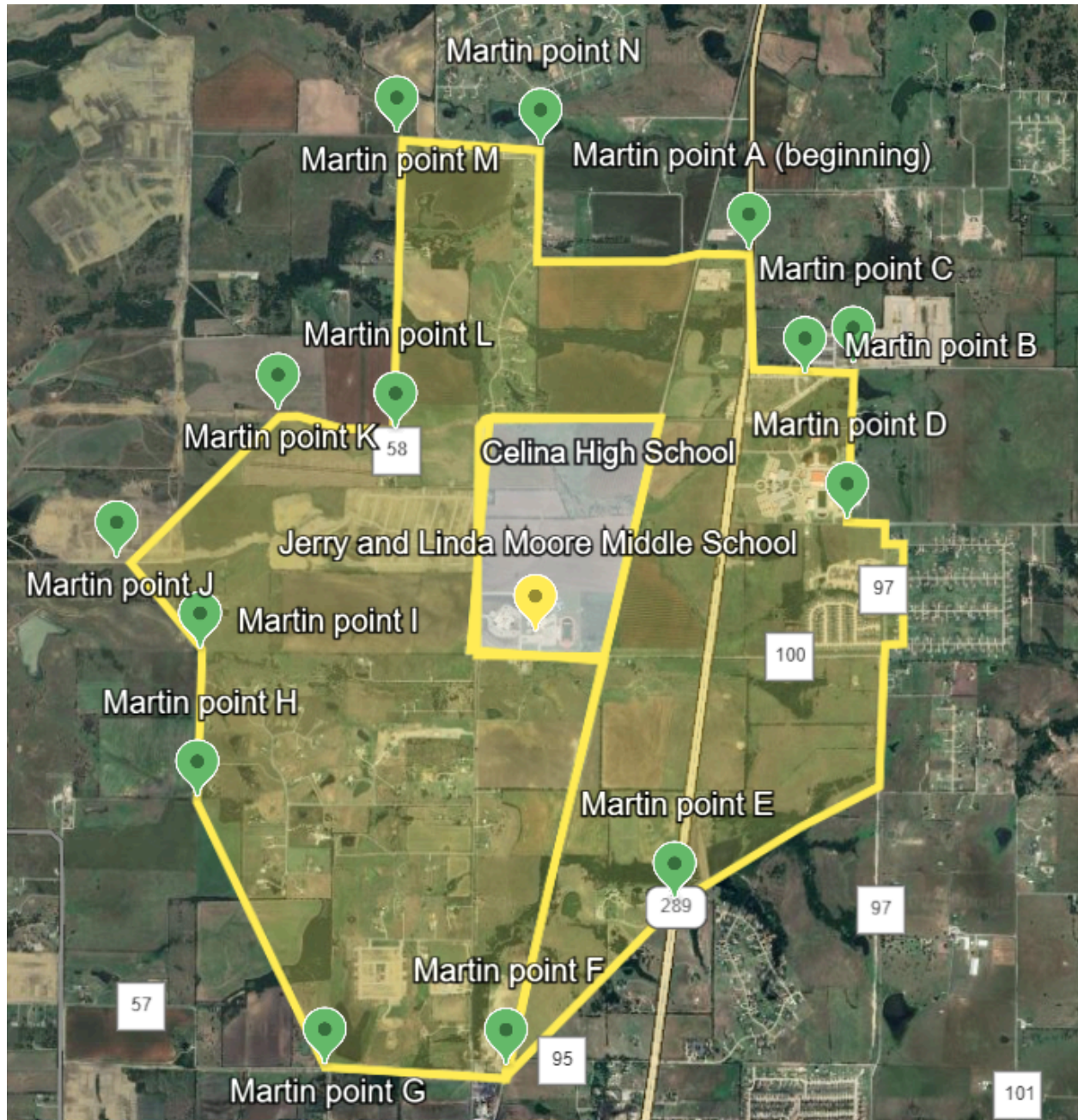
Martin Elementary Hazardous Area (Area is shown in green and walkzone in white.)



Beginning at the intersection of Hwy 289 and Mark Alexander Ct (point A at 33°22'43"N 96°45'56"W), go south on Hwy 289 for 0.45 miles to the intersection of Hwy 289 and Rountree Ct. Go east on Rountree Ct for 0.23 miles to point B (33°22'20"N 96°45'43"W). Go east across land for 0.48 miles to point C (33°22'21"N 96°45'32"W) on Legacy Rd. Go south across land for 0.58 miles to point D (33°21'51"N 96°45'33"W) on Rd 134. Go east on Rd 134 for 0.14 miles to the intersection on Rd 134 and Rd 97. Go south on Rd 97 for 370 feet to the intersection of Rd 97 and Lanat Trl. Go east on Lanat Trl for 317 feet to the intersection on Lanat Trl and Bandana Dr. Go south on Bandana Dr for 0.36 miles to the intersection on Bandana Dr and Tapadero Ln.

Go west on Tapadero Ln for 317 feet to the intersection of Tapadero Ln and Rd 97. Go south on Rd 97 for 0.55 miles to the intersection of Rd 97 and Rd 101. Go southwest across land for 0.85 miles to point E (33°20'38"N 96°46'13"W) on Hwy 289. Go southwest across land for 0.88 miles to point F (33°20'06"N 96°46'52"W) on railroad tracks. Go west across land for 0.68 miles to point G (33°20'06"N 96°47'34"W). Go northwest across land for 1.11 miles to point H (33°20'58"N 96°48'03"W). Go north across land for 0.55 miles to point I (33°21'26"N 96°48'03"W). Go northwest across land for 0.46 miles to point J (33°21'44"N 96°48'22"W). Go northeast across land for 0.82 miles to point K (33°22'13"N 96°47'45"W). Go east across land for 0.44 miles to point L (33°22'09"N 96°47'18"W) on Rd 58. Go north on Rd 58 for 1.11 miles to point M (33°23'06"N 96°47'17"W). Go east across land for 0.54 miles to point N (33°23'04"N 96°46'44"W). Go south across land for 0.39 miles to the intersection of N Preston Lake Dr and Mark Alexander Ct. Go east on Mark Alexander Ct for 0.61 miles to the point of beginning.

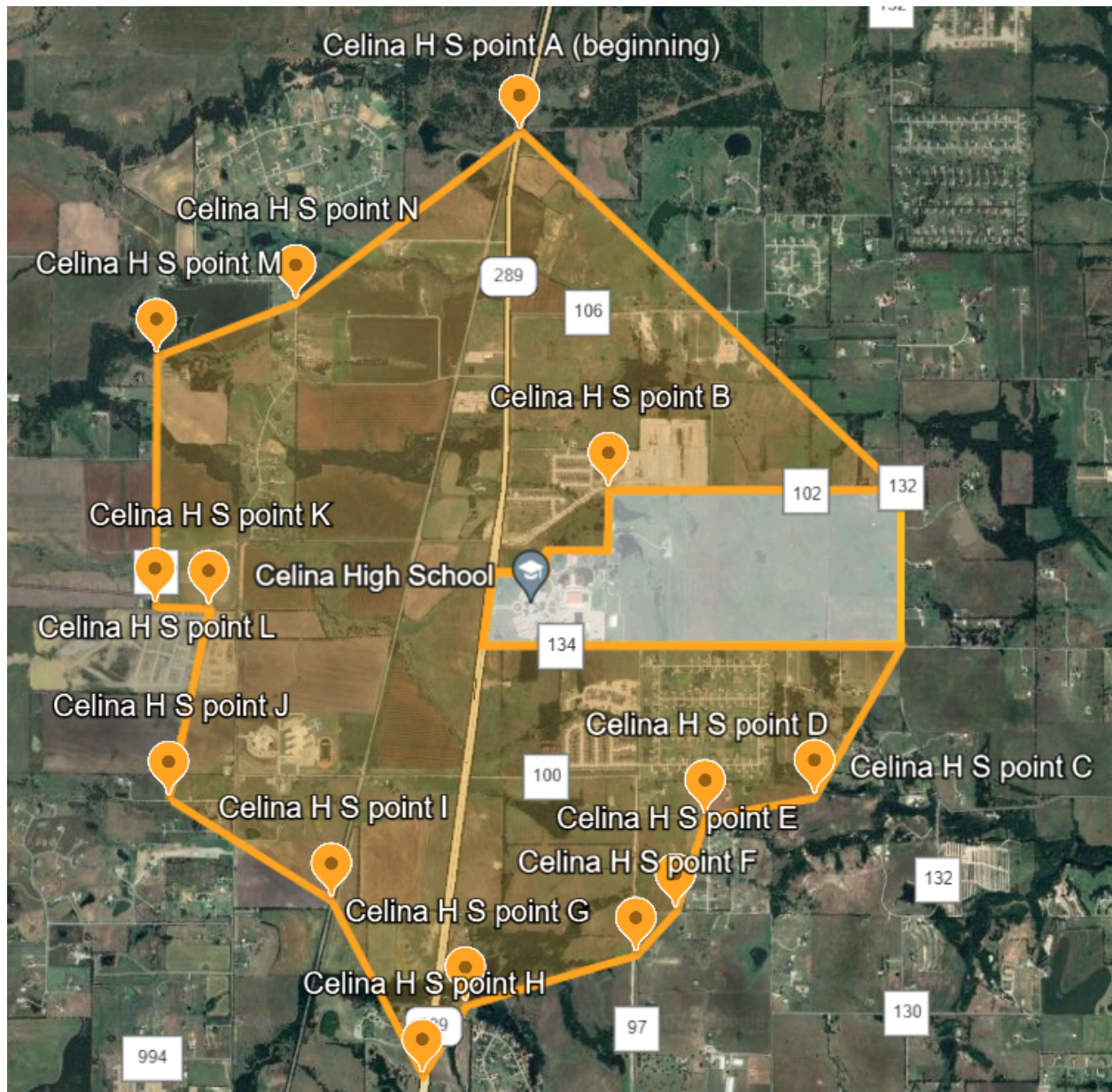
Moore Middle School Hazardous Area (same as Martin Elementary)



Beginning at the intersection of Hwy 289 and Mark Alexander Ct (point A at 33°22'43"N 96°45'56"W), go south on Hwy 289 for 0.45 miles to the intersection of Hwy 289 and Rountree Ct. Go east on Rountree Ct for 0.23 miles to point B (33°22'20"N 96°45'43"W). Go east across land for 0.48 miles to point C (33°22'21"N 96°45'32"W) on Legacy Rd. Go south across land for 0.58 miles to point D (33°21'51"N 96°45'33"W) on Rd 134. Go east on Rd 134 for 0.14 miles to the intersection on Rd 134 and Rd 97. Go south on Rd 97 for 370 feet to the intersection of Rd 97 and Lanat Trl. Go east on Lanat Trl for 317 feet to the intersection on Lanat Trl and Bandana Dr. Go south on Bandana Dr for 0.36 miles to the intersection on Bandana Dr and Tapadero Ln.

Go west on Tapadero Ln for 317 feet to the intersection of Tapadero Ln and Rd 97. Go south on Rd 97 for 0.55 miles to the intersection of Rd 97 and Rd 101. Go southwest across land for 0.85 miles to point E (33°20'38"N 96°46'13"W) on Hwy 289. Go southwest across land for 0.88 miles to point F (33°20'06"N 96°46'52"W) on railroad tracks. Go west across land for 0.68 miles to point G (33°20'06"N 96°47'34"W). Go northwest across land for 1.11 miles to point H (33°20'58"N 96°48'03"W). Go north across land for 0.55 miles to point I (33°21'26"N 96°48'03"W). Go northwest across land for 0.46 miles to point J (33°21'44"N 96°48'22"W). Go northeast across land for 0.82 miles to point K (33°22'13"N 96°47'45"W). Go east across land for 0.44 miles to point L (33°22'09"N 96°47'18"W) on Rd 58. Go north on Rd 58 for 1.11 miles to point M (33°23'06"N 96°47'17"W). Go east across land for 0.54 miles to point N (33°23'04"N 96°46'44"W). Go south across land for 0.39 miles to the intersection of N Preston Lake Dr and Mark Alexander Ct. Go east on Mark Alexander Ct for 0.61 miles to the point of beginning.

Celina High School Hazardous Area (Area is shown in orange and walkzone in white.)



Beginning on Hwy 289 at point A (33°23'31"N 96°45'53"W), go southeast for 1.93 miles across land to the intersection of Rd 132 and N Legacy Dr. Go west on N Legacy Dr for 1.09 miles to point B (33°22'21"N 96°45'32"W). Go south across land for 0.22 miles to the intersection of Four Winds Dr and Bobcat Trl. Go west on Bobcat Trl for 0.5 miles to the intersection of Bobcat Trl and Hwy 289. Go south on Hwy 289 for 0.27 miles to the intersection of Hwy 289 and Rd 134. Go east on Rd 134 for 1.56 miles to the intersection of Rd 134 and Rd 132. Go southwest across land for 0.64 miles to point C (33°21'22"N 96°44'44"W). Go southwest across land for 0.41 to point D (33°21'18"N 96°45'10"W). Go south across land for 0.36 miles to point E (33°20'51"N 96°45'26"W) on Rd 101. Go southwest across land for 0.22 miles to point F (33°20'51"N 96°45'26"W). Go southwest across land for 0.65 miles to point G (33°20'42"N 96°46'05"W). Go southwest across land for 0.31 miles to point H on Hwy 289. Go northwest

across land for 0.73 miles to point I on railroad tracks. Go northwest across land for 0.71 miles to point J (33°21'21"N 96°47'14"W) on private road 5524. Go northeast across land for 0.73 miles to point K (33°21'58"N 96°47'05"W) on Co Rd 58. Go west on Co Rd 58 for 0.2 miles to point L (33°21'59"N 96°47'18"W). Go north on Co Rd 58 for 0.93 miles to point M (33°22'47"N 96°47'17"W). Go northeast across land for 0.56 miles to point N (33°22'58"N 96°46'45"W) on N Preston Lake Dr. Go northeast across land for 1.05 miles to the point of beginning (point A) on Hwy 289.

Adopted this _____ (date) day of _____ (month), _____ (year), by the Board of Trustees.

Presiding officer's signature

Board Secretary's signature