

DON'T WAIT. GRADUATE.



**PREMIER
HIGH SCHOOL**

PHS of Arkansas

Renewal

December 2022

RESPONSIVE EDUCATION SOLUTIONS TEAM

James Taylor	RES Chief Financial Officer RES Chief Technology Officer
Rhonda Bradford	RES AR Superintendent
Dennis Felton, Jr. (Presenter)	AR State Director, Premier High Schools
Susan Provenza	AR State Director, Classical Academies
Katie Stephens	RES AR Executive Director of Finance
Curtis Shack	RES AR Executive Director of Data and Systems Management
Aaron Duvall	AR CTE Director
Marla Pearson	RES AR Director of Special Programs
Andrew Schroeder	PHS Instructional Coach/Data Coach



PREMIER
HIGH SCHOOL.

RESPONSIVE EDUCATION SOLUTIONS, INC. OVERVIEW

Founded in 1999

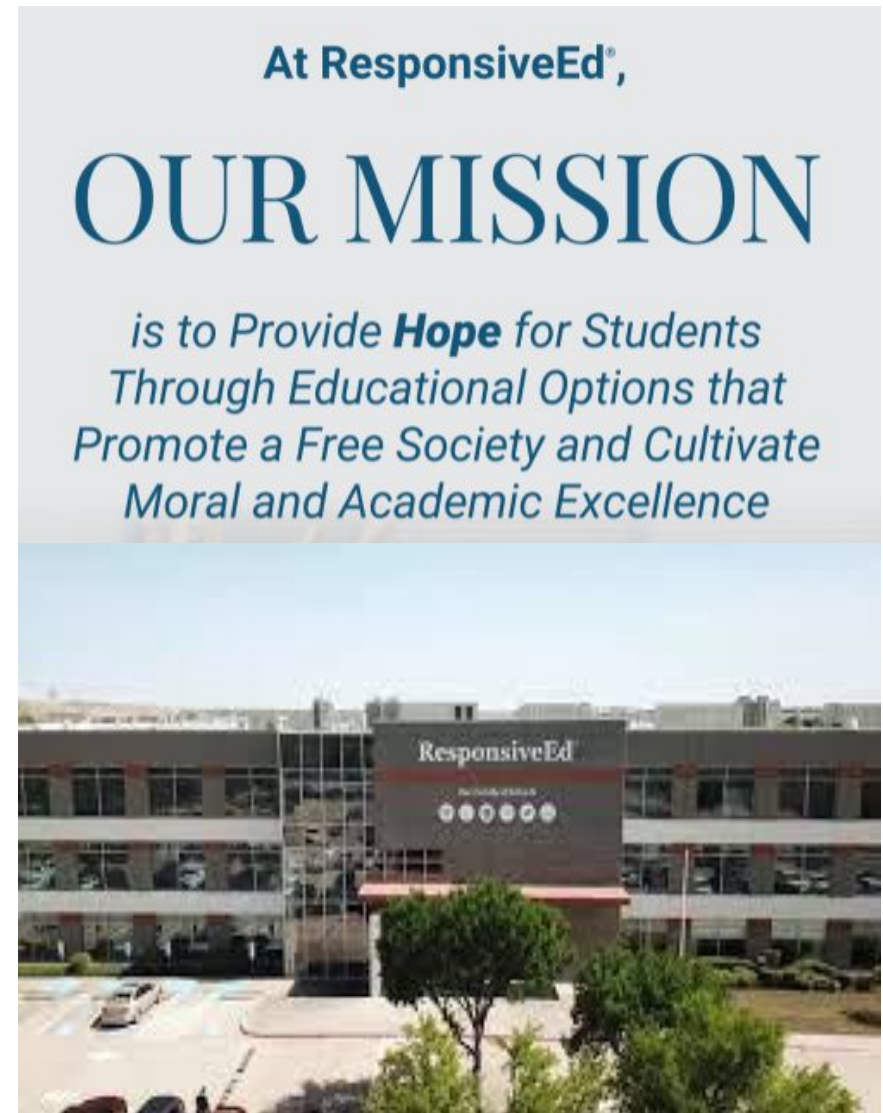
Operates more than 90 schools across the country

6 School Brands

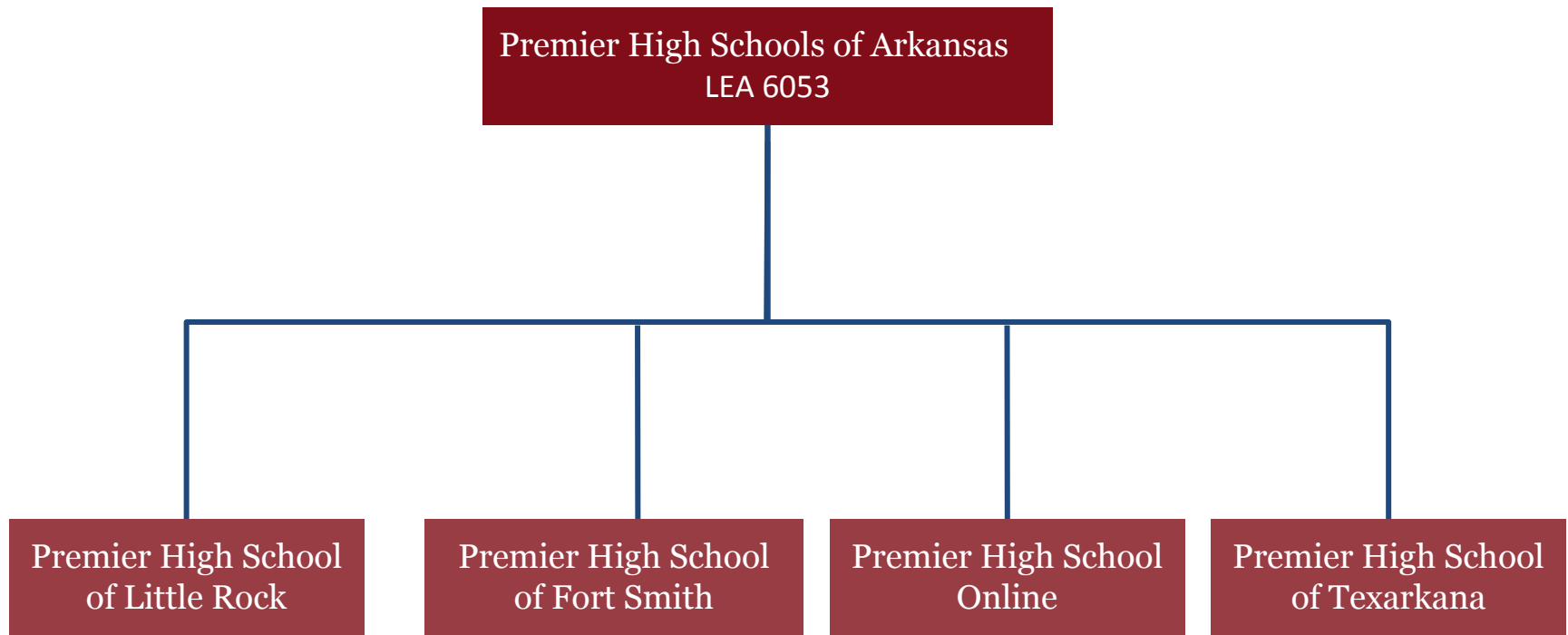
22,000+ Graduates

22,000+ Students

2,400+ Employees



PHS of AR OVERVIEW



Premier High Schools in Arkansas

Current Locations

PHS Little Rock

PHS North Little Rock

PHS Springdale

PHS Fort Smith

PHS Texarkana-AR

PHS Online

Arkansas



ResponsiveEd[®]

ARKANSAS



PREMIER HIGH SCHOOL[®]

Campus Enrollment

Premier High School Little Rock	78
Premier High School Texarkana	45
Premier High School Fort Smith	74
Premier High School North Little Rock	124
Premier High School Springdale	91
Premier High School Online	136

Currently serving over 500 students across Arkansas

OUR MISSION

is to provide **hope** for students through a **caring, mastery-based, blended learning** option, that promote a free society and cultivate **moral and academic excellence.**



WHO DO WE SERVE?

- Students seeking a smaller, personalized learning environment
- Disengaged students
- Students who have or are “at-risk” of dropping out
- Employed students
- Parent students
- Delinquent/truant students



ACADEMIC MODEL

- Personalized Learning Plan/Graduation Projection Plan
- Mastery-Based Learning
- Goal Setting/Student Ownership
- Student Success Portfolio
- Student Advisory
- Personalized Learning Coach



Premier High Schools of Arkansas

By the Numbers...

- 304** Arkansas High School Diplomas Awarded
- 135** Dropout Recovery Graduates
- 25** Early Graduates
- 25** Teen Parent Graduates
- 43** College Hours Earned
- 178** Graduates enrolled in a college, military, or postsecondary institution upon graduation

Arkansas Impact- Premier High Schools

CONNECTING WITH STUDENTS

Extracurricular Activities: Student Council, Photography Club, Yearbook Club, Mentoring Club, Service Club, Basketball, Dance, Track & Field, Science Club

College & Career Readiness: College Visits, College Fairs, Career Day, ACT Prep, Workforce Career Readiness Certificates

Student Advisory: Graduation Projection Plan, Personalized Learning Plan, Scheduling, Student Success Center, Writing Center



CONNECTING WITH PARENTS & COMMUNITY

Parental Involvement: Parent Volunteers,
Parent Teacher Organization

Community Involvement: Community Service
Learning, Community Partnerships, Community
Advisory Council, Juvenile Justice Office, Truancy
Officer

CONNECTING WITH OTHER SCHOOLS

Collaboration:

- **Lisa Academy** (PD/Leadership Talks)
- **Hope Academy** (PD)
- **LR Metro** (CTE Pathways)
- **The Excel Center** (Proficiency Certificates)
- **Arkansas Tech University** (Concurrent Credit)
- **Arkansas Baptist College** (Concurrent Credit/Postsecondary Resources)

Premier High Schools Awards & Recognition

In 2018, PHS of Little Rock was awarded a CSP Expansion Grant to expand educational offerings and impact the Little Rock community.

In 2020, Premier High School of Little Rock has graduated over 200 students in the past ten (10) years.

In 2018, Premier High School of Little Rock was recognized by Secretary Johnny Key & Gov. Asa Hutchinson for participation in the Inaugural Class of PLC at Work schools in the state of Arkansas.

In 2017, PHSLR Basketball Team was the AACS Conference Champs.

In 2017, PHSLR Track & Field Team won the State Runner up in AACS.



Premier High Schools Awards & Recognition

In 2017, Premier High School of Little Rock was selected to participate in the DESE PLC Pilot Project.

In 2017, a PHS teacher was recognized by Little Rock Family Magazine for Educator of the Year.

In 2016, Premier High School of Little Rock was recognized by the AR Department of Elementary & Secondary Education (DESE) for “best practices” in Personalized Learning among charter schools.



ENGAGEMENT

25% of the students enrolled are engaged in extracurricular activities and/or clubs

56% of students are enrolled in a CTE pathway, Industry Based Certification pathway, or JAG

Source: MySchool Info, DESE Data Center



SUPPORT & Human Capital

The logo features the words "Teach" and "Learn" in a 3D, blocky font. "Teach" is positioned above "Learn", and both are rendered in a light yellow/gold color. The text is set against a dark blue background with a lighter blue oval shape behind the letters, creating a sense of depth and shadow.

High Quality Professional Development

- Job Embedded Coaching
- Instructional Coaching & Feedback
- Novice Mentoring
- PGP
- Local, State, and National Conferences

Charter Leadership Institute

- Novice Administrators
- BA mentoring

Central Office Support

- Professional Development Plan
- LEADS/TESS alignment

Professional Learning Community

- Replication of PLC Practice at PHSLR
- AR PLC Institute/National PLC Institute

A DAY IN THE SHOES OF A PREMIER STUDENT

- Character Education
- Goal Setting/
Personalized Learning
Coach, SEL Check-In
- Academic Advising
- Tutorial Session
- Independent Study
- Project Based Learning
- Employment/Internship
/IBC/CTE Program



SCHOOL STUDENT SUPPORT SERVICES

One-on-One Tutorial Sessions

College & Career Coach

Personalized Learning Coach

Graduation Advisory Committee

Attendance Recovery Program

Dropout Prevention Specialist



**PREMIER
HIGH SCHOOL.**

SCHOOL PARENT SUPPORT SERVICES

-Communication: Parent Square,
Social Media

-Parent Workshops

Literacy/Math Night, Postsecondary
Planning, Financial Literacy, Social
Emotional Support

-Representation: Parent Teacher
Organization, Committee
Representation

-Accessibility: Monthly “Donuts
with the Director”



SPECIAL SCHOOL FEATURES

- **Character Education:** 9 Virtues/Guest Speakers
- **Career Prep:** College Visits, College Fairs, & FASFA Night
- **Student Life:** Extracurricular Activities
- **Recognition:** Student Awards & Honors Program
- **CTE Programs**



Christeon Coleman
Class of 2017

CTE Breakdown

Little Rock Metro Pathways

Construction Trades
Automotive Services
Welding
Medical Professions



Velvatex Cosmetology School

JAG Program Occupations

Food Service
Retail
Recreation

FAA Drone Pilot Program

Peak Innovation Center Fort Smith Pathways:

Network Engineering



WHY CTE INDUSTRY BASED CERTIFICATIONS??

AVERAGE WAGES

HVAC: \$20-\$22 PER HOUR

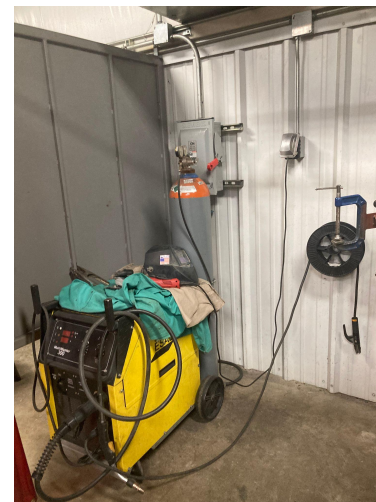
CODING: \$20 PER HOUR

CNA: \$15 PER HOUR

WELDING \$19-\$22 PER HOUR

**INDUSTRIAL MAINTENANCE:
\$24-\$26 PER HOUR**

In Arkansas, students who complete a CTE program of study were 21 percentage points more likely to graduate than peers (Thomas Ford Institute, 2016)



COMMUNITY ENGAGEMENT

Pizza With a Professional

**Entrepreneurship
Workshops**

Shadow a CEO

Internships

JAG

Service Learning



COMMUNITY INTEREST & SUPPORT

PHS Parents

**Community Business
Owners**

**Community Members &
Leaders**



PHS of Fort Smith Ribbon Cutting



PHS of Texarkana Ribbon Cutting



SUCCESES

**Student & Parent
Testimonials**

CTE Partnerships

**Community Engagement &
Partnerships**

Parent Engagement

Personalized Approach



**PREMIER
HIGH SCHOOL.**

What We Have Learned?

Students can learn through a myriad of instructional options. This can be face to face, onsite instruction, or virtual, re-reading, watching tutorials, or accelerating through concepts as they choose.

The professional development and instructional support is differentiated from traditional method of instruction.

Mutual **ACCOUNTABILITY, EFFECTIVE COMMUNICATION,** and **FLEXIBILITY** are essential to student outcomes.

“Education is not a one size fits all, it must be **PERSONALIZED!**”



CHALLENGES

Attendance & Engagement

Academic Learning Gaps

Community Social Problems

Recruitment & Retention



PREMIER
HIGH SCHOOL.

RESOLUTIONS

Attendance Incentive Plan

Dropout Prevention Specialist

**Instructional/Data Coach
Job Embedded PD**

**RTI Plan for Learning Gaps &
Attendance**

**Partnering with other schools
to discuss best practices**



RESOLUTIONS

School Improvement Plan

Literacy Plan

**Literacy Intervention
Program**

Professional Development

Literacy & Math Consultant

DESE Literacy Support



NEW GOALS

Goal 1: 100% of PHS-Little Rock students will develop Student Success Plans, and apply and be accepted into a post-secondary education school, military, or vocational program.

Goal 2: Premier Little Rock will administer the NWEA MAP Reading, Math & Science Assessment for students in grades 9-12 (3) times during the 2022-2023 SY. Based on the Fall to Spring NWEA MAP, 75% of the students attending Premier High School of Little Rock will meet, or surpass the projected growth score in reading, mathematics, and science.

Goal 3: 95% of Premier students will participate in state mandated assessments.

Goal 4: PHS - Little Rock will implement a Social and Emotional Learning Plan focused on education and engagement.

Goal 5: 100% of Premier's senior class will be assigned an internship/apprenticeship, earn industry based certification, and/or earn college credit during their senior year.



PHS of AR is seeking 10 year renewal to....

- 1) Provide an **alternate academic program** to Arkansas communities that provides an educational opportunity that focuses on educationally disengaged students.
- 2) **Decrease the dropout rate and increase the graduation rate** in the Arkansas communities where educationally disadvantaged students are a concern.
- 3) Prepare students for **postsecondary goals** through robust CTE and Industry Based Certifications
- 4) Replicate “**personalized learning**” **best practices** in Arkansas to increase program capacity and accessibility.

ResponsiveEd AR PREMIER GRADUATES



Inaugural Graduating Class:
10 graduates (2014)

More than **300** AR Premier
graduates to date

Anticipate over **120** high
school diplomas to be
awarded 22-23 SY

Premier High School

“Where the success of our students matter the most”

“Aiming to be responsive to the needs of the Arkansas communities”



PREMIER
HIGH SCHOOL.

Questions?



PREMIER
HIGH SCHOOL.