

PEAK Incident & Response



April 24, 2023

Location



Culture of Excellence

Point of Entry



Current Completed Steps

- Ensured control joints are sealed
- Restoration and clean-up of water damage
- Consulted with HSA Engineering to help determine the root cause



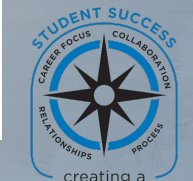
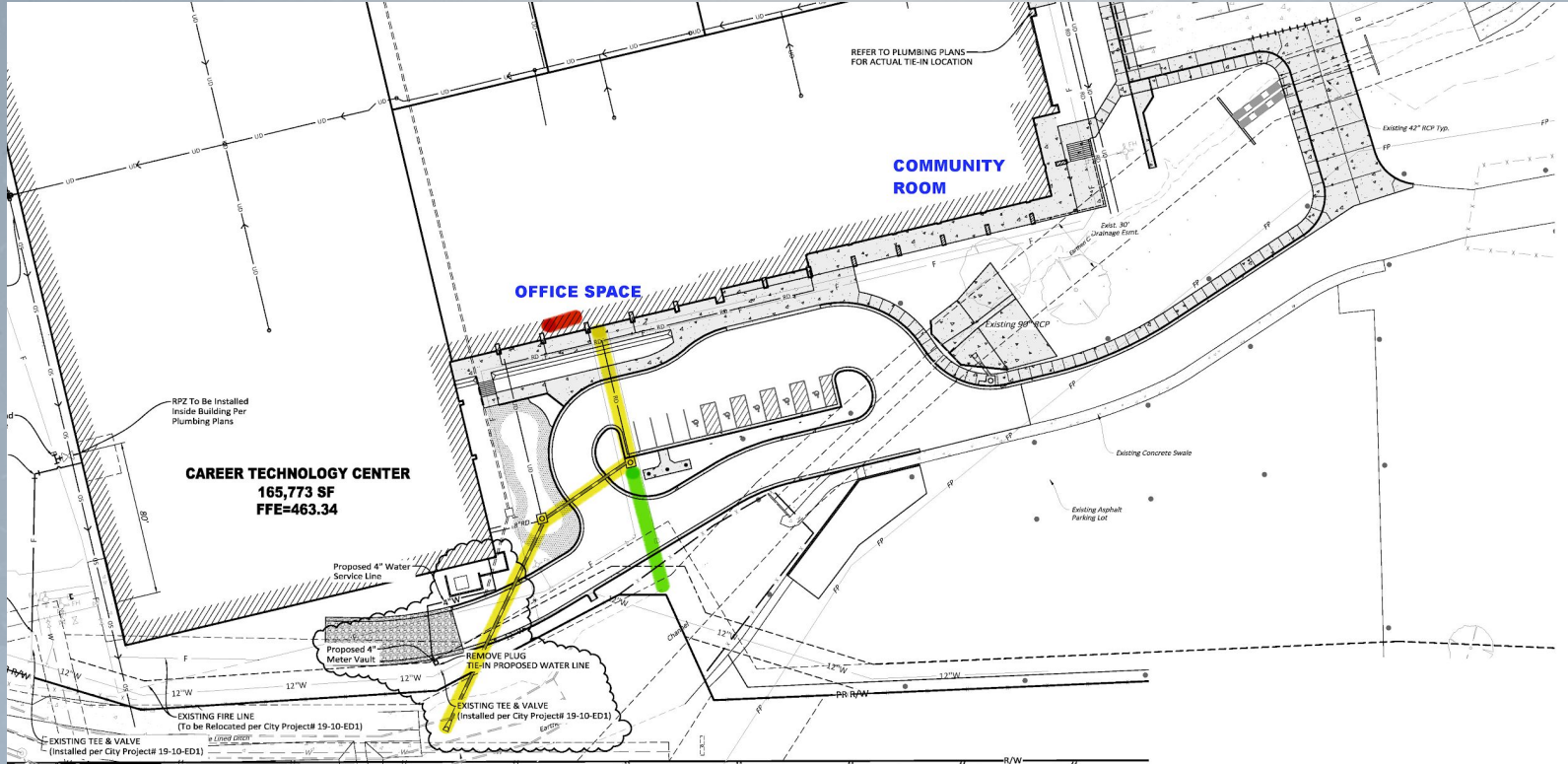
Current Completed Steps

- Excavated areas to ensure roof drainage is intact
- Hydro-jetted underground drainage
- Camera'd drainage lines to ensure structural integrity



Current Step in Progress

- Installing new overflow drain from existing storm box



THANK YOU

