

TO: KRESA Board of Education

FROM: Sandy Barry-Loken, Executive Director of Communications & Community Engagement

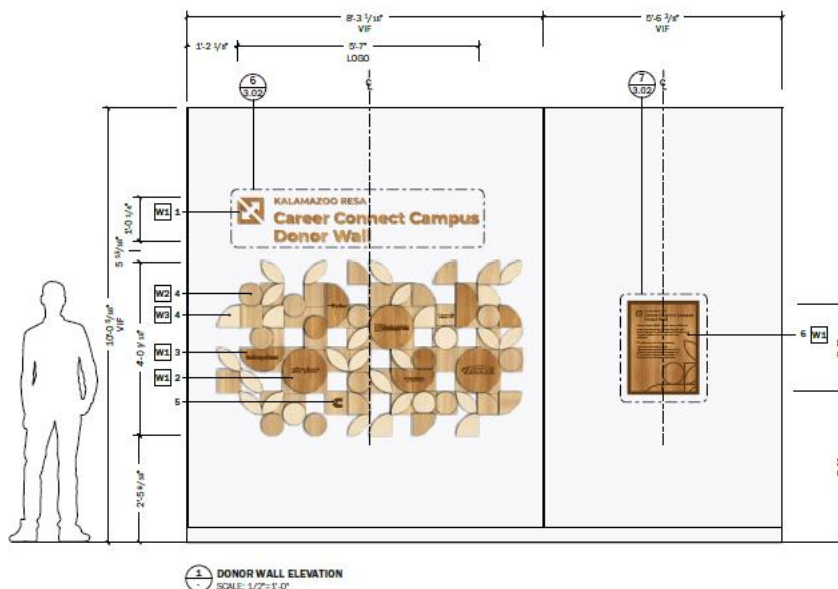
RE: Request to Support Career Connect Campus Donor Wall Production and Installation

DATE: September 2025

In the spring of this year, we confirmed a design for a donor recognition wall at the Career Connect Campus (see below). We are requesting your approval to move forward with production and installation of this project at the Campus.

This feature will honor the generous sponsors and donors who have invested in the future sustainability of the campus, and serve as a visible symbol of community support. Located in a prominent space near the main entrance, we anticipate the wall also will help build momentum for continued investment in career and technical education.

After reviewing multiple vendor quotes, we request your approval to go forward with a proposal totaling \$35,646.81. This purchase will be will paid out of the Campus construction project funds.



Kalamazoo RESA Service Center

1819 E. Milham Avenue, Portage, MI 49002

T: 269.250.9200 | F: 269.250.9550

www.kresa.org