



UNITED INDEPENDENT SCHOOL DISTRICT AGENDA ACTION ITEM

TOPIC: Approval of Board Travel for the Month of June 2012

SUBMITTED BY: Roberto J. Santos **OF:** Superintendent

APPROVED FOR TRANSMITTAL TO SCHOOL BOARD: May 16, 2012

RECOMMENDATION:

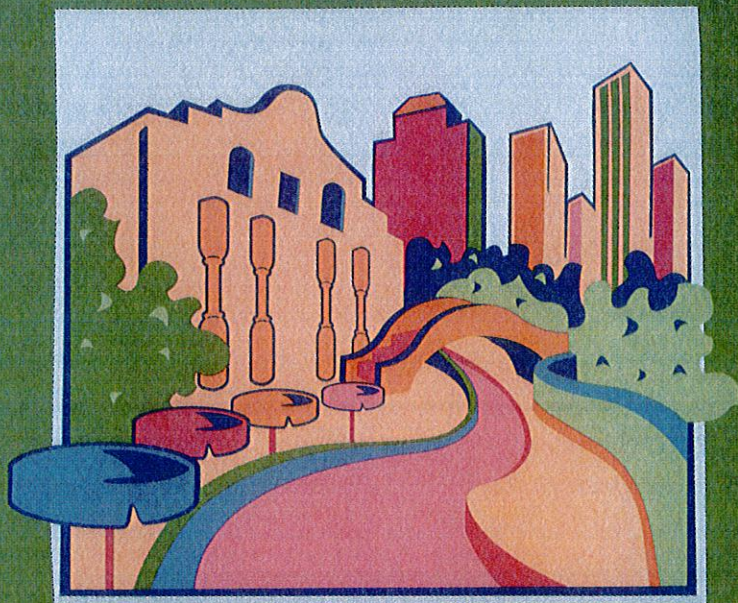
It is recommended that the United ISD Board of Trustees approve Board Travel for the Month of June 2012.

RATIONALE:

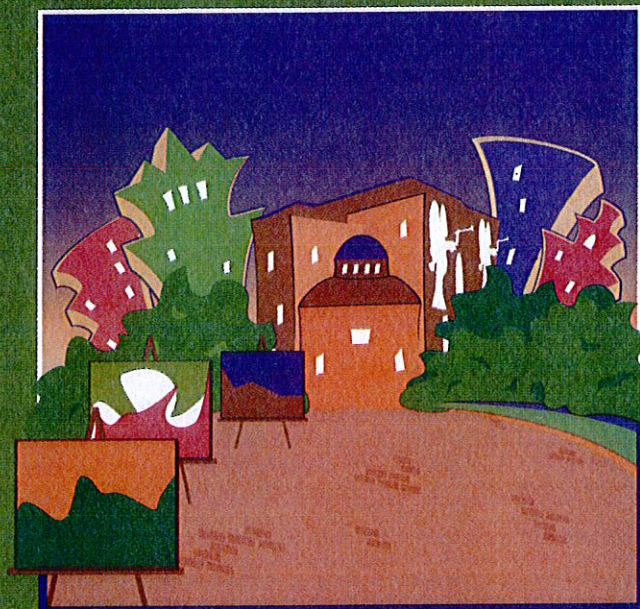
BUDGETARY INFORMATION:

BOARD POLICY REFERENCE AND COMPLIANCE:

2012 SUMMER LEADERSHIP INSTITUTE



JUNE 14-16 • SAN ANTONIO
MARRIOTT RIVERCENTER



JUNE 28-30 • FORT WORTH
OMNI

FROM ONE ROOM TO ONE WORLD



Wed.	4-7 p.m.	Registration for Thursday-Saturday Attendees • 4-7 p.m.	
	7-8 a.m.	Registration for Thursday-Saturday Attendees and Continental Breakfast (Included in registration fee) • 7-8 a.m.	
Thursday	8-9:15 a.m.	General Session • 8-9:15 a.m.	
	9:30-10:45 a.m.	In-Depth Sessions (Choose one.) 9:30 a.m.-12:15 p.m.	Breakout Sessions (Choose one.) 9:30-10:45 a.m.
	11 a.m.-12:15 p.m.		Breakout Sessions (Choose one.) 11 a.m.-12:15 p.m.
	12:15-1:15 p.m.	Lunch (Included in registration fee) • 12:15-1:15 p.m.	
	1:30-2:45 p.m.	In-Depth Sessions (Choose one.) 1:30-4:15 p.m.	Breakout Sessions (Choose one.) 1:30-2:45 p.m.
	3-4:15 p.m.		Breakout Sessions (Choose one.) 3-4:15 p.m.
	Friday	7-8 a.m.	Registration and Continental Breakfast (Included in registration fee) • 7-8 a.m.
8-9:15 a.m.		General Session • 8-9:15 a.m.	
9:30-10:45 a.m.		All Day (Part 1) In-Depth Sessions (Choose one.) 9:30 a.m.-12:15 p.m.	Breakout Sessions (Choose one.) 9:30-10:45 a.m.
11 a.m.-12:15 p.m.			Breakout Sessions (Choose one.) 11 a.m.-12:15 p.m.
12:15-1:15 p.m.		Lunch (Included in registration fee) • 12:15-1:15 p.m.	
1:30-2:45 p.m.		All Day (Part 2) In-Depth Sessions (Choose one.) 1:30-4:15 p.m.	Breakout Sessions (Choose one.) 1:30-2:45 p.m.
3-4:15 p.m.			Breakout Sessions (Choose one.) 3-4:15 p.m.
Saturday	7:30-8:30 a.m.	Continental Breakfast (Included in registration fee) • 7:30-8:30 a.m.	
	8:30-9:45 a.m.	In-Depth Sessions (Choose one.) 8:30-11:15 a.m.	Breakout Sessions (Choose one.) 8:30-9:45 a.m.
	10-11:15 a.m.		Breakout Sessions (Choose one.) 10-11:15 a.m.