



Talented and Gifted

Erin Slifer

Professional Development

What is a talented and gifted student?
Enrichment ideas...
Differentiation
Sample Task

INDEPENDENT STUDY	DIGITAL CONTENT
<p>Circle 30. Complete Circle 30 and 31. Write your answers in the space provided.</p> <p>Materials:</p> <ul style="list-style-type: none">Circle 30Circle 31Circle 32Circle 33Circle 34Circle 35Circle 36Circle 37Circle 38Circle 39Circle 40Circle 41Circle 42Circle 43Circle 44Circle 45Circle 46Circle 47Circle 48Circle 49Circle 50Circle 51Circle 52Circle 53Circle 54Circle 55Circle 56Circle 57Circle 58Circle 59Circle 60Circle 61Circle 62Circle 63Circle 64Circle 65Circle 66Circle 67Circle 68Circle 69Circle 70Circle 71Circle 72Circle 73Circle 74Circle 75Circle 76Circle 77Circle 78Circle 79Circle 80Circle 81Circle 82Circle 83Circle 84Circle 85Circle 86Circle 87Circle 88Circle 89Circle 90Circle 91Circle 92Circle 93Circle 94Circle 95Circle 96Circle 97Circle 98Circle 99Circle 100	<p>Exploring options for enrichment activities</p> <p>Materials:</p> <ul style="list-style-type: none">Circle 30Circle 31Circle 32Circle 33Circle 34Circle 35Circle 36Circle 37Circle 38Circle 39Circle 40Circle 41Circle 42Circle 43Circle 44Circle 45Circle 46Circle 47Circle 48Circle 49Circle 50Circle 51Circle 52Circle 53Circle 54Circle 55Circle 56Circle 57Circle 58Circle 59Circle 60Circle 61Circle 62Circle 63Circle 64Circle 65Circle 66Circle 67Circle 68Circle 69Circle 70Circle 71Circle 72Circle 73Circle 74Circle 75Circle 76Circle 77Circle 78Circle 79Circle 80Circle 81Circle 82Circle 83Circle 84Circle 85Circle 86Circle 87Circle 88Circle 89Circle 90Circle 91Circle 92Circle 93Circle 94Circle 95Circle 96Circle 97Circle 98Circle 99Circle 100
TEACHING STANDARD	SKILL / QUESTION
<p>Examples in Circle 30</p> <p>Materials:</p> <ul style="list-style-type: none">Circle 30Circle 31Circle 32Circle 33Circle 34Circle 35Circle 36Circle 37Circle 38Circle 39Circle 40Circle 41Circle 42Circle 43Circle 44Circle 45Circle 46Circle 47Circle 48Circle 49Circle 50Circle 51Circle 52Circle 53Circle 54Circle 55Circle 56Circle 57Circle 58Circle 59Circle 60Circle 61Circle 62Circle 63Circle 64Circle 65Circle 66Circle 67Circle 68Circle 69Circle 70Circle 71Circle 72Circle 73Circle 74Circle 75Circle 76Circle 77Circle 78Circle 79Circle 80Circle 81Circle 82Circle 83Circle 84Circle 85Circle 86Circle 87Circle 88Circle 89Circle 90Circle 91Circle 92Circle 93Circle 94Circle 95Circle 96Circle 97Circle 98Circle 99Circle 100	<p>Examples in Circle 30</p> <p>Materials:</p> <ul style="list-style-type: none">Circle 30Circle 31Circle 32Circle 33Circle 34Circle 35Circle 36Circle 37Circle 38Circle 39Circle 40Circle 41Circle 42Circle 43Circle 44Circle 45Circle 46Circle 47Circle 48Circle 49Circle 50Circle 51Circle 52Circle 53Circle 54Circle 55Circle 56Circle 57Circle 58Circle 59Circle 60Circle 61Circle 62Circle 63Circle 64Circle 65Circle 66Circle 67Circle 68Circle 69Circle 70Circle 71Circle 72Circle 73Circle 74Circle 75Circle 76Circle 77Circle 78Circle 79Circle 80Circle 81Circle 82Circle 83Circle 84Circle 85Circle 86Circle 87Circle 88Circle 89Circle 90Circle 91Circle 92Circle 93Circle 94Circle 95Circle 96Circle 97Circle 98Circle 99Circle 100
4CS	MINI-LESSONS

Secondary Level

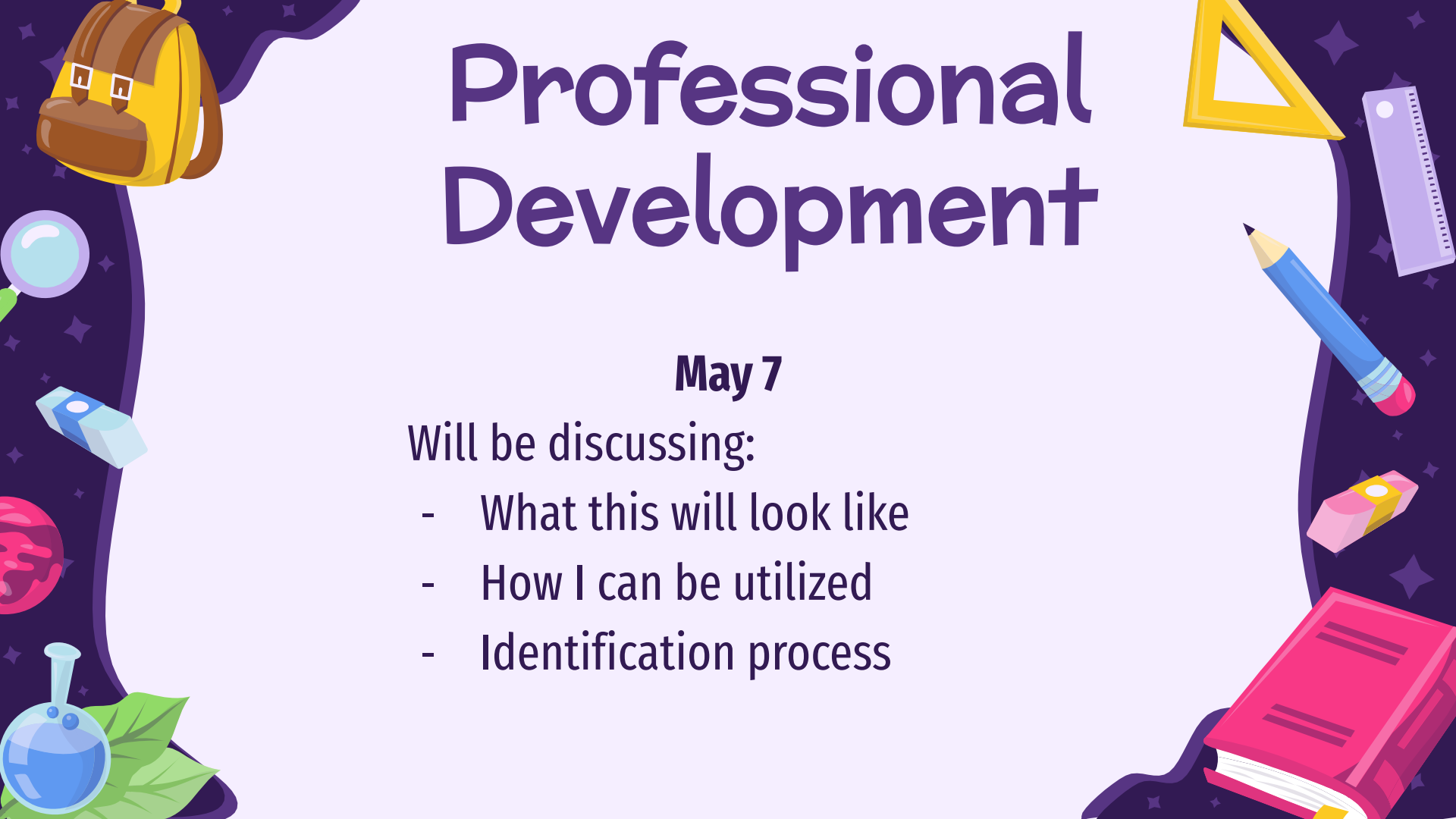


Professional Development

May 7

Will be discussing:

- What this will look like
- How I can be utilized
- Identification process



**Talented and Gifted Handbook:
Identification and Program Guide for Enriching Education for
Gifted Learners
2023-2024**



BELMOND KLEMMÉ DISTRICT VISION:

Our students are the key to the 21st century - becoming lifelong learners, responsible citizens, and caring individuals.

BELMOND KLEMMÉ DISTRICT MISSION:

The Belmond-Klemme Community School District is committed to excellence and lifelong learning for ALL.

BELMOND KLEMMÉ FOUNDATION OF BELIEFS:

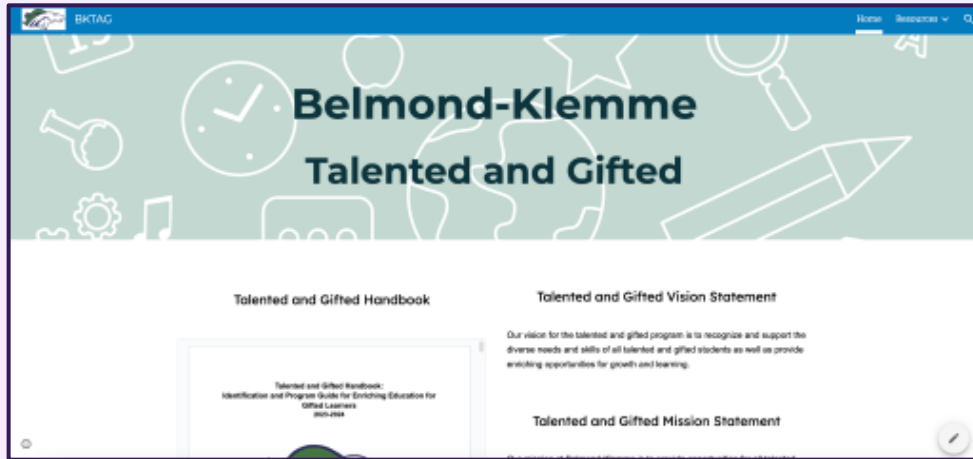
Academic excellence is paramount
All students can and will learn.
The communities of the school district will work together to promote a safe and positive learning environment.
All students will be treated in a fair and equitable manner.
The education system will challenge students of all ability levels to be their best.
Learning is a lifelong journey.

Handbook

Mission / Vision / Identification



Website



Identification

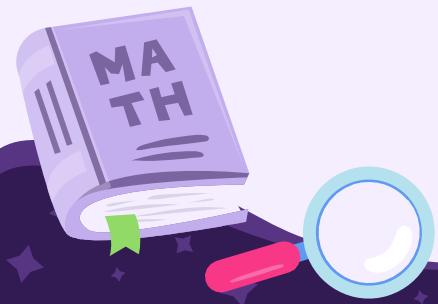
CogAT, ISASP, FASTBridge

Screeners

Post Test

aReading
EarlyReading

aMath
EarlyMath



Identification

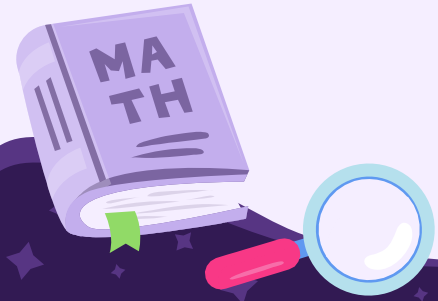
Teacher Behavior Scale

Parent Behavior Scales

ELL Checklist

ELL Teacher Consultation

Portfolios



A decorative border surrounds the central text, featuring various school supplies and objects. On the left, there is a yellow backpack with brown straps, a magnifying glass, a blue eraser, a red planet, and a blue flask with a green leaf. On the right, there is a yellow triangle ruler, a purple ruler, a blue pencil, a pink eraser, and a pink book. The background is a light purple color with small, dark purple stars.

My TAG VISION

Coaching Centered

- **Professional development provided**
- **Push into classes “ALL means ALL”**
- **Provide enrichment activities outside of class as well**

