

January 2016

Derby Public Schools

Performance Dashboard

Derby High School

Martin Pascal, Principal

“People without information cannot act. People with information cannot help but act.”

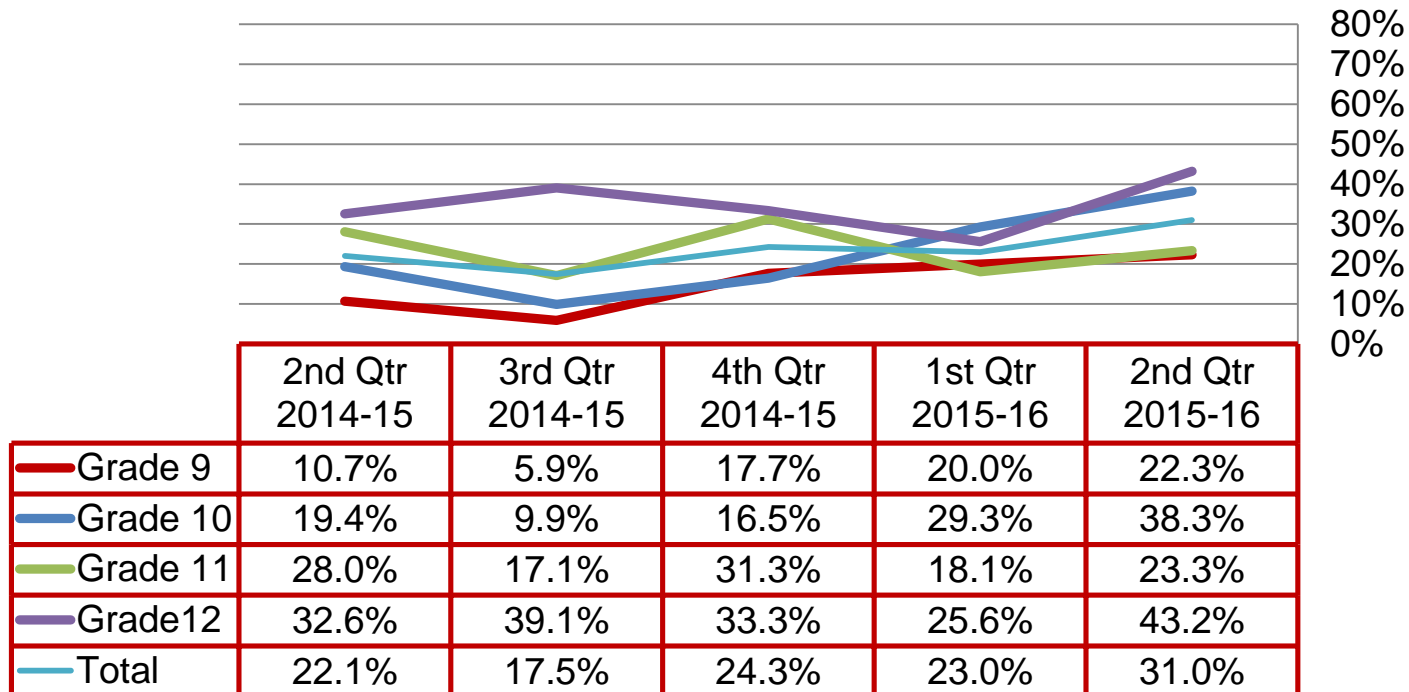
Ken Blanchard



Quarterly Data

High Grades

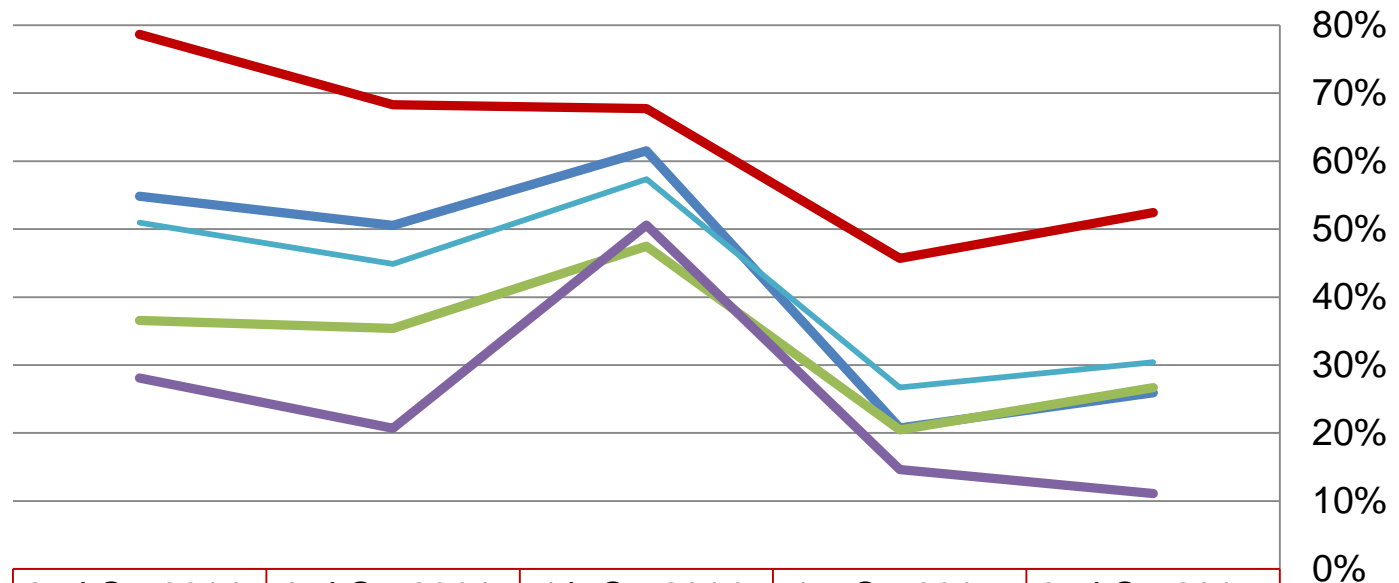
Percent of students earning 80% or above in all courses regardless of academic level:



Failing Grades

Derby High School

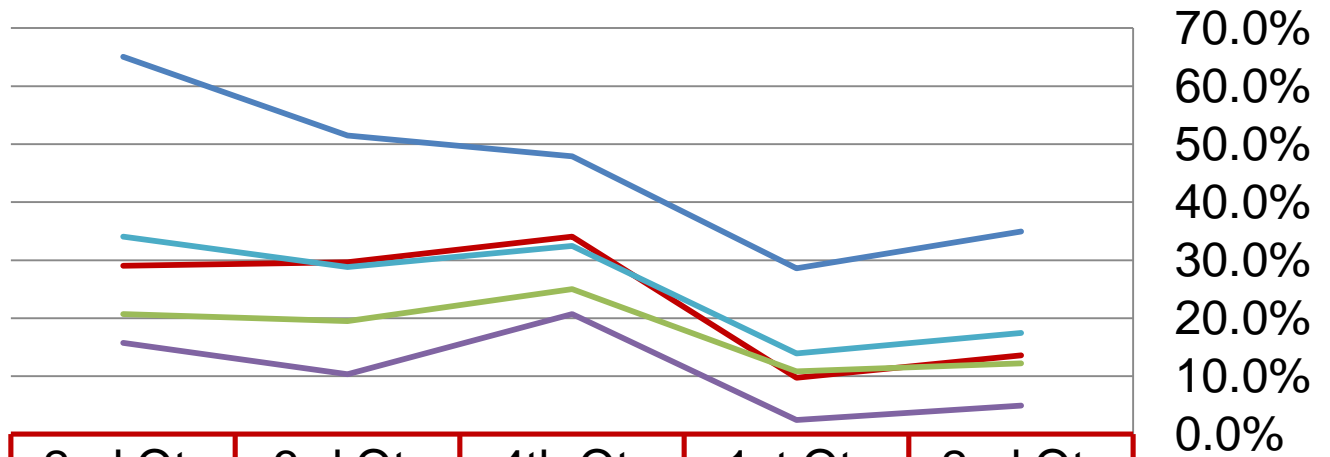
Percent of students with at least one course below a 65%:



	2nd Qtr 2014-15	3rd Qtr 2014-15	4th Qtr 2014-15	1st Qtr 2015-16	2nd Qtr 2015-16
Grade 9	78.6%	68.3%	67.7%	45.7%	52.4%
Grade 10	54.8%	50.5%	61.5%	20.7%	25.9%
Grade 11	36.6%	35.4%	47.5%	20.5%	26.7%
Grade 12	28.1%	20.7%	50.6%	14.6%	11.1%
Total	51.0%	44.9%	57.3%	26.7%	30.4%

Failing Grades

Percent of students with at least two courses below a 65%:



	2nd Qtr 2014-15	3rd Qtr 2014-15	4th Qtr 2014-15	1st Qtr 2015-16	2nd Qtr 2015-16
Grade 9	65.0%	51.5%	47.9%	28.6%	35.0%
Grade 10	29.0%	29.7%	34.1%	9.8%	13.6%
Grade 11	20.7%	19.5%	25.0%	10.8%	12.2%
Grade 12	15.7%	10.3%	20.7%	2.4%	4.9%
Grades 9 - 12	34.1%	28.8%	32.5%	13.9%	17.5%

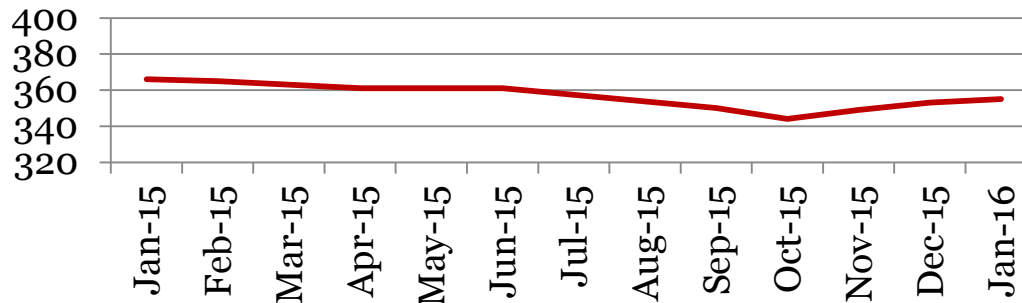
Monthly Data

Derby High School

Enrollment – 1st of the month

	9	10	11	12	Total
Jan-16	103	81	90	81	355
Dec-15	105	83	83	82	353
Nov-15	103	83	82	81	374
Oct-15	101	82	80	81	344
Sep-15	105	83	81	81	350
Jun-15	101	91	82	87	361
May-15	101	91	82	87	361
Apr-15	101	91	82	87	361
Mar-15	102	91	83	87	363
Feb-15	102	93	83	87	365
Jan-15	100	92	84	90	366

Total School Enrollment

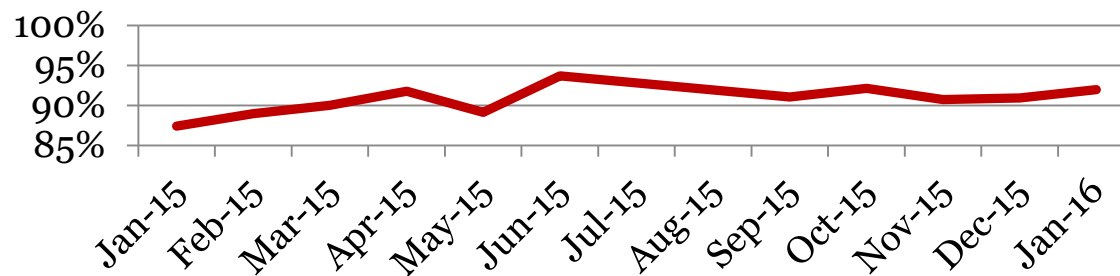


Attendance – Students

Average daily percent present:

	9	10	11	12	Total
Jan-16	88	95	94	92	92
Dec-15	90	91	93	90	91
Nov-15	88	91	94	91	91
Oct-15	89	91	95	95	92
Sep-15	87	91	93	95	91
Jun-15	90	94	95	94	94
May-15	88	92	90	86	89
Apr-15	90	93	91	93	92
Mar-15	89	92	90	90	90
Feb-15	88	91	87	90	89
Jan-15	89	89	84	87	87

Total Student Attendance



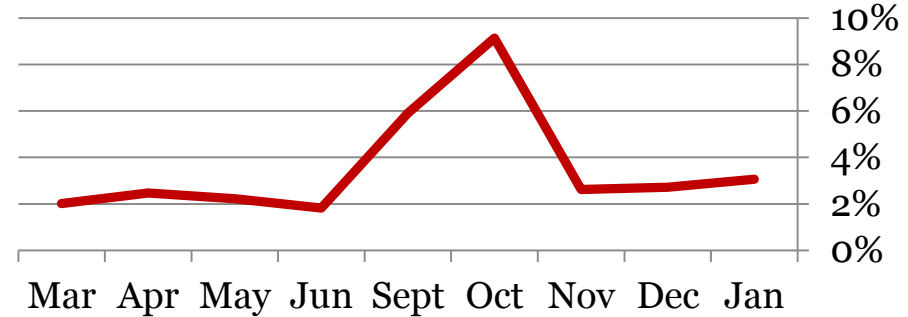
Tardies

Average daily percent tardy:

Derby High School

	9	10	11	12	Total
Jan-16	3	3	5	2	3
Dec -15	3	3	2	3	3
Nov -15	3	2	2	3	3
Oct-15	10	8	9	9	9
Sept-15	6	5	7	6	6
Jun-15	2	2	1	2	2
May-15	2	3	3	2	2
Apr-15	2	2	3	2	2
Jan-15	2	3	3	2	2

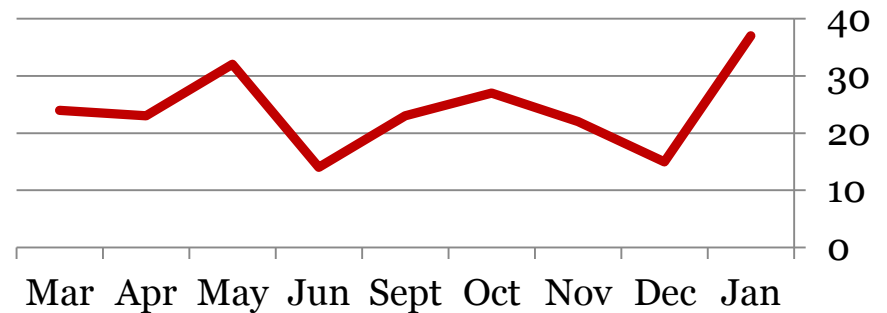
Total Student Tardies



Number of students tardy 5 or more days:

Students over Threshold

	9	10	11	12	Total
Jan-16	6	2	27	2	37
Dec-15	8	3	1	3	15
Nov-15	8	2	4	8	22
Oct-15	9	6	7	5	27
Sept-15	8	6	4	5	23
Jun-15	3	4	5	2	14
May-15	8	9	10	5	32
Apr-15	4	10	6	3	23
Jan-15	6	8	10	4	28

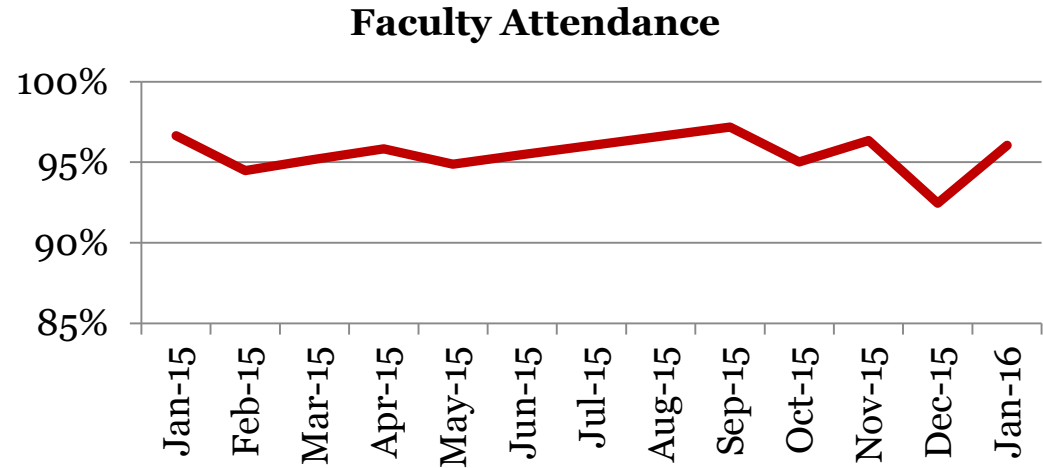


Attendance – Faculty

Average daily percent present:

Derby High School

	Total
Jan-16	96
Dec-15	92
Nov-15	96
Oct-15	95
Sep-15	98
Jun-15	95
May-15	95
Apr-15	96
Mar-15	95
Feb-15	94
Jan-15	97



**This indicator reflects certified staff and does not include absences created by class trips, professional development, workman's comp and FMLA. However % may be reduced due to long term illness beyond FMLA.*

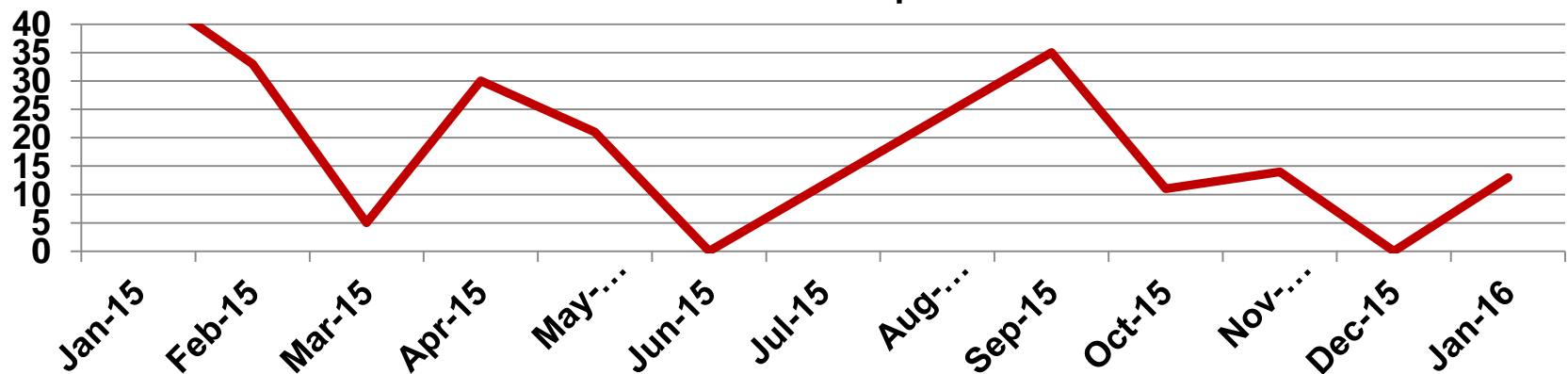
Suspensions – Out of School

Derby High School

Number of student suspensions (total days of suspension):

	9		10		11		12		Total	
Jan-16	2	(11)	0	(0)	0	(0)	2	(2)	4	(13)
Dec-15	0	0	0	(0)	0	(0)	0	(0)	0	(0)
Nov-15	1	(10)	0	(0)	2	(4)	0	(0)	3	(11)
Oct-15	3	(9)	10	(2)	0	(0)	0	(0)	13	(11)
Sep-15	1	(10)	1	(5)	2	(20)	0	(0)	4	(35)
Jun-15	0	(0)	0	(0)	0	(0)	0	(0)	0	(0)
May-15	1	(3)	4	(17)	1	(1)	0	(0)	6	(21)
Apr-15	1	(5)	0	(0)	1	(2)	3	(23)	5	(30)
Mar-15	0	(0)	0	(0)	0	(0)	2	(5)	2	(5)
Feb-15	2	(20)	0	(0)	3	(13)	0	(0)	5	(33)
Jan-15	2	(14)	1	(10)	3	(23)	0	(0)	6	(47)

Total Out of School Suspensions

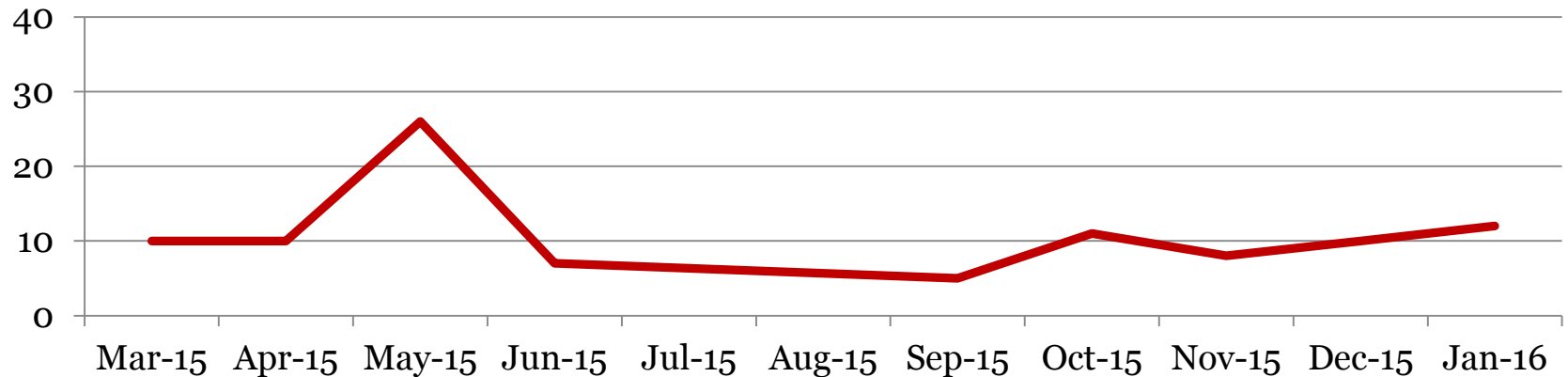


Suspensions – In School

Number of student suspensions (total days of suspension):

	9		10		11		12		Total	
Jan-16	8	(9)	0	(0)	2	(3)	0	(0)	10	(12)
Dec-15	5	(7)	0	(0)	2	(3)	0	(0)	7	(10)
Nov-15	4	(4)	0	(0)	1	(1)	2	(3)	7	(8)
Oct-15	7	(8)	1	(1)	2	(2)	0	(0)	10	(11)
Sep-15	1	(1)	1	(2)	1	(1)	1	(1)	4	(5)
Jun-15	3	(3)	2	(2)	2	(2)	0	(0)	7	(7)
May-15	6	(6)	6	(7)	6	(6)	5	(7)	23	(26)
Apr-15	3	(4)	1	(1)	1	(1)	3	(4)	8	(10)
Jan-15	2	(2)	1	(1)	4	(6)	2	(3)	9	(12)

Total In School Suspensions



Newly Enrolled Students

	9	10	11	12	Total
Jan-16	1	2	0	0	3
Dec-15	3	1	1	0	5
Nov-15	3	1	2	1	7
Oct-15	3	1	3	0	7
Sep-15	5	2	1	3	11
Summer-15	1	0	0	0	1
Jun-15	1	0	0	0	1
May-15	0	0	0	0	0
Apr-15	1	0	0	0	1
Mar-15	1	2	0	0	3
Feb-15	2	0	0	0	2
Jan-15	3	2	1	0	6

Departing Students

Students who have left the school during the month for any reason:

	9	10	11	12	Total
Jan-16	1	0	1	2	4
Dec-15	0	1	0	1	2
Nov-15	1	2	0	0	3
Oct-15	0	0	2	1	3
Sep-15	6	10	1	1	18
Summer-15	1	1	0	0	2
Jun-15	2	0	0	0	2
May-15	1	0	0	0	1
Apr-15	0	0	0	0	0
Mar-15	2	2	1	0	5
Feb-15	2	2	0	0	4
Jan-15	1	1	2	1	5

Dropouts

Student who discontinue schooling, leave for a GED program/Job Corp, or are disenrolled by grade level.

	9	10	11	12	Total
Jan-16	0	0	0	0	0
Dec-15	0	1	0	0	1
Nov-15	0	0	2	0	2
Oct-15	1	0	1	1	3
Sept 2015	0	0	1	1	2
Summer-15	0	0	0	0	0
Jun-15	0	0	0	1	1
May-15	0	0	0	0	0
Apr-15	0	0	0	0	0
Mar-15	0	1	0	0	1
Feb-15	0	1	0	0	1
Jan-15	0	0	2	0	2