



March 3, 2025



EARLY CHILDHOOD

Annual Program Update

Heidi Veal
Early Childhood Program Administrator



Agenda

- Program Overview
- Enrollment
- Student Data
- Celebrations
- Goals

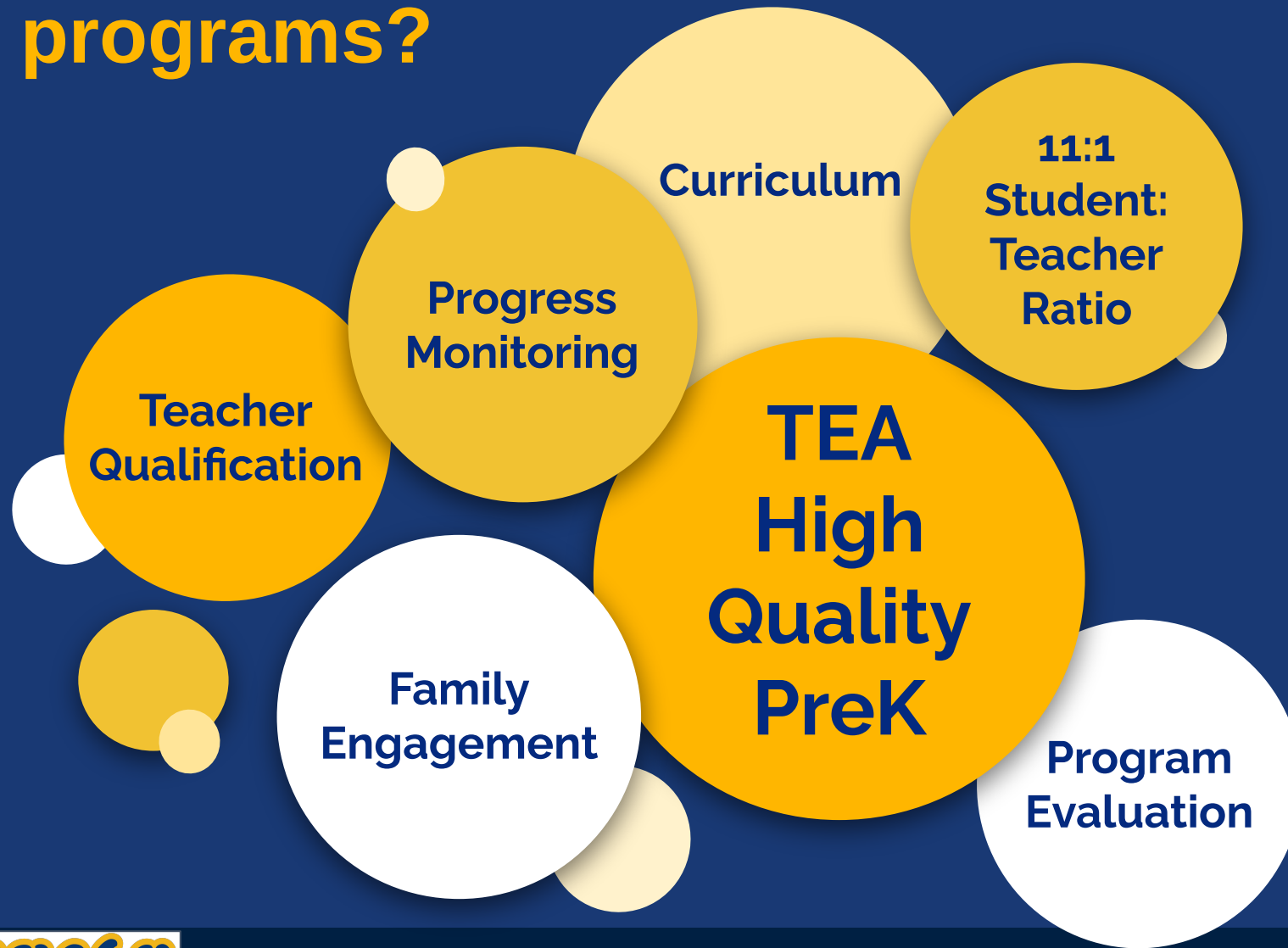




All students are confident, equipped with the knowledge and skills to thrive and adapt for their future.



What does the state require of prekindergarten programs?



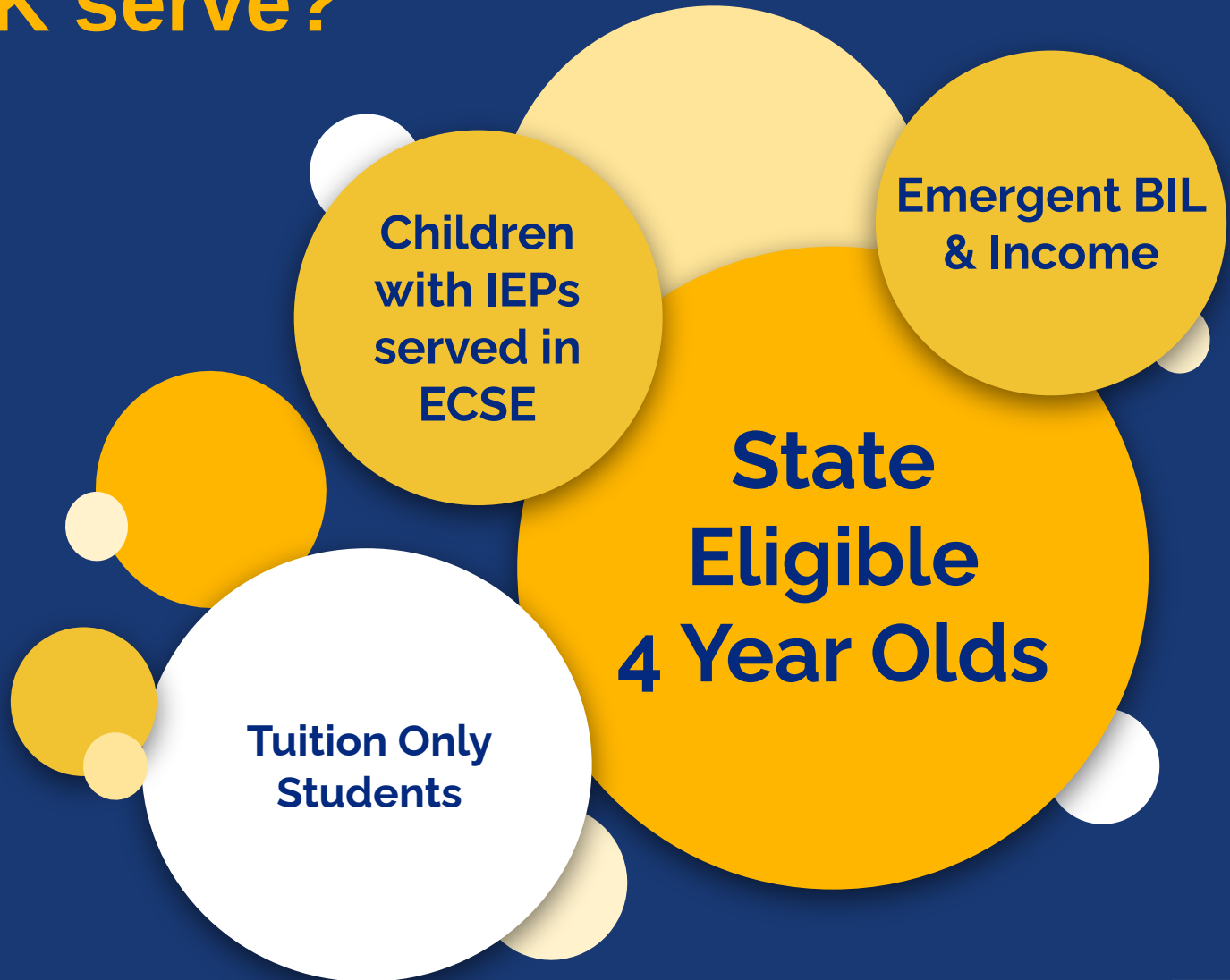
TEA HQPK Requirements

- Curriculum
- Progress Monitoring
- Student Teacher Ratio
- Teacher Qualifications
- Family Engagement
- Program Evaluation

Who does LISD PreK serve?

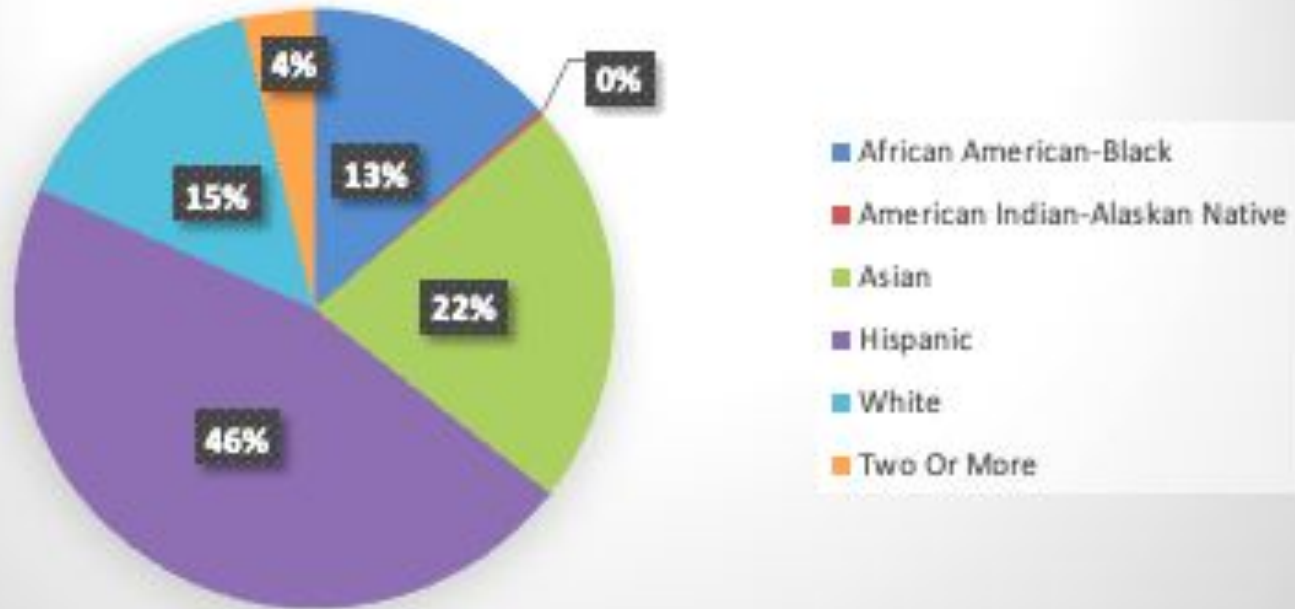
State PreK Eligibilities

- Emergent BIL
- Income
- Homeless
- Foster
- Active Duty Military
- Star of Texas

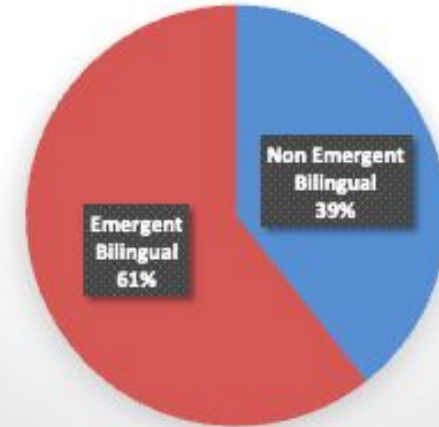


Who did LISD PreK serve in 2023-24?

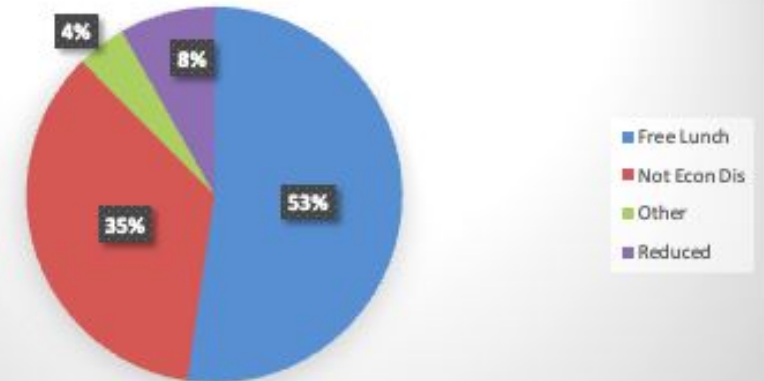
2023-2024 Ethnicity of PK Enrollment



2023-2024 Emergent Bilingual Breakdown



2023-2024 Economically Disadvantaged



How is PreK funded?

- 2019's HB3 required all PreK eligible 4 year olds be served in full day classes
- The state funds ONLY half-day ADA
- Early Education Allotment is intended to fund gaps related to PreK
 - 2023-24 Early Ed Allotment was \$5,284,331 and we spent \$8,280,528 on state required Prekindergarten.
- PreK continues to be underfunded by the state
 - Half-day ADA is a little over \$3,000 per PreK eligible student
 - The LISD staffing cost is \$7,869 per non-LJJ PreK student and \$12,496 per LJJ student.
- Pre K funding shortfalls inhibit providing bussing for PreK

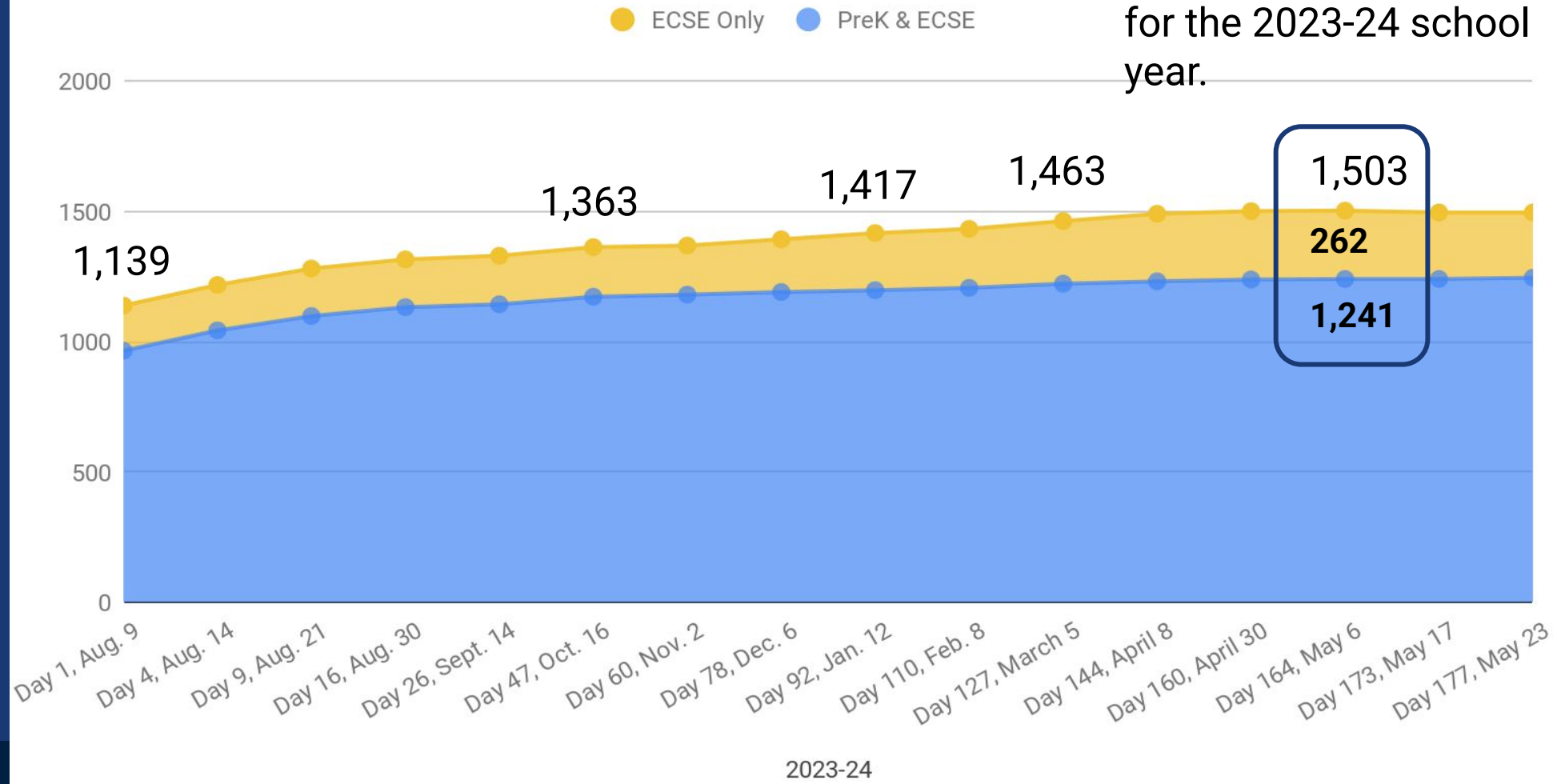
PreK & ECSE Staffing Considerations

- TEA requires an 11:1 student to teacher ratio with a 22 student cap
- Current staffing model
 - Gen Ed PreK - 1 PreK teacher & 1 para
 - Co-Teach PreK - 1 PreK teacher, 1 SpEd teacher & 2 paras
 - Some Self Contained ECSE classes
- Another possible staffing model
 - Gen Ed PreK - 1 PreK teacher & 1 para
 - Inclusive PreK - 1 Triple Certified PreK teacher (EC, ESL or BIL, & SpEd) & 2 paras
 - In many cases, this model results in increasing self contained ECSE classes

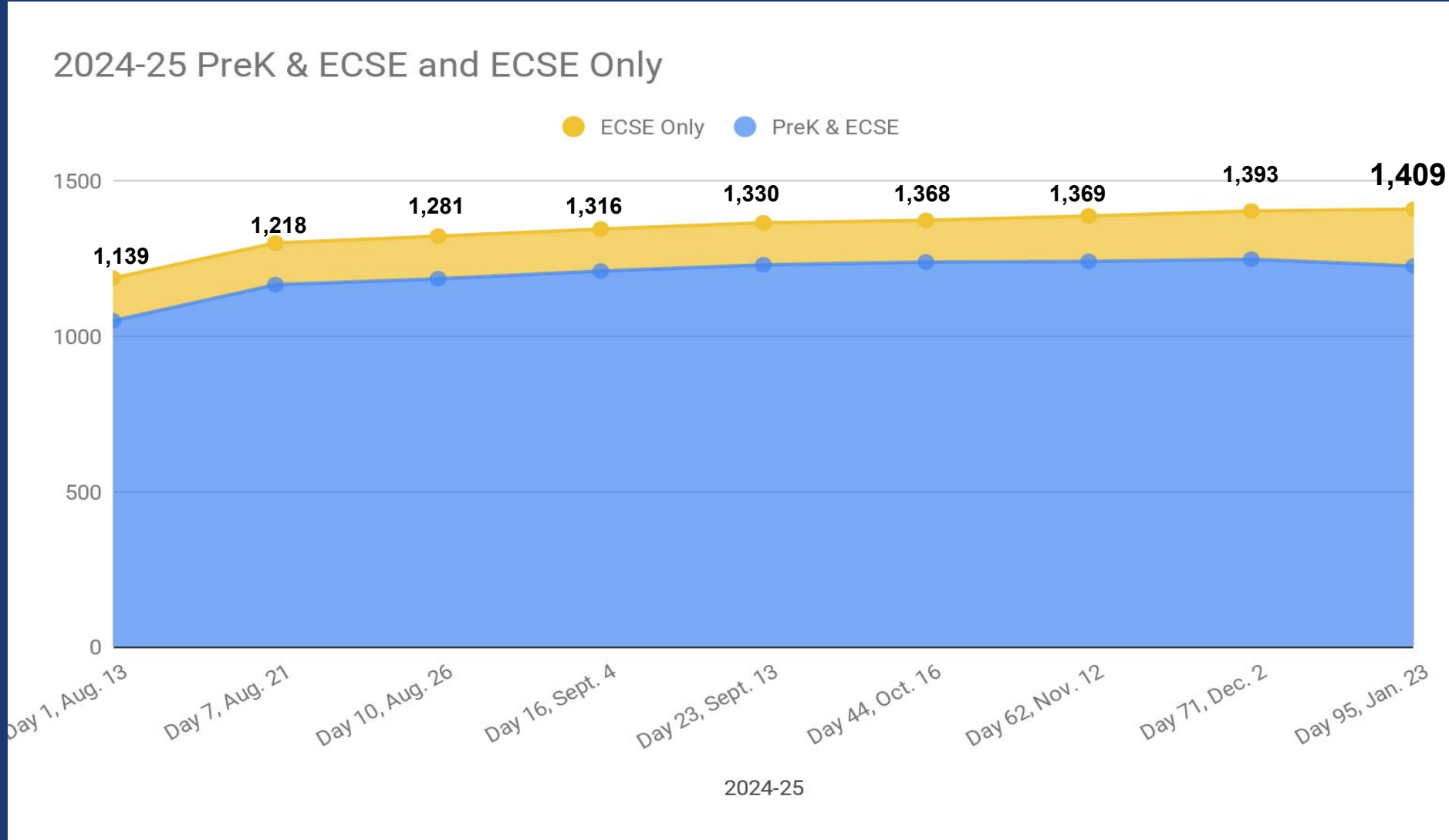
2023-24 LISD PreK Enrollment

2023-24 PreK & ECSE and ECSE Only

May 6 saw the highest PreK & ECES enrollment for the 2023-24 school year.



2024-25 PreK Enrollment



- **270** new students have enrolled since the first day of school
- 2024-25 EC Program capacity is 1,474 in 67 classes

2024-25 PreK By the Numbers



18	Schools with PreK (2025-26 will have 16 total schools with PreK)
67	FULL DAY PreK Classes: 48 ESL, 19 BIL
34	Co-teach PreK classes
1,226*	PreK Eligible students
183*	ECSE ONLY students
1,409*	Combined total with PreK & ECSE

*As of Jan. 23 Daily Enrollment Report

2024-25 PreK Enrollment By Feeder

Feeder	January 2025
TCHS	89%
HHS	96%
MHS	96%
FMHS	94%
LHS	90%
LISD	91% (90% ESL; 95% BIL)



*As of Jan. 2025

Tuition Based PreK

- LISD offers tuition based PreK In Discovery Academy
- In 2025-26, LISD will host nine total Discovery Academy classes at five schools across the district.
 - Heritage Elementary (2)
 - Lillie J Jackson Early Childhood Center (2)
 - Liberty Elementary (2)
 - Memorial Elementary (2)
 - Valley Ridge Elementary (1)
- 2025-26 tuition rates will increase to \$840 with reduced rates for PreK eligible students and children/grandchildren of LISD employees.

DISCOVERY ACADEMY

Lewisville Independent School District

TUITION-BASED PRE-K ACADEMY

Now accepting applications at Carrollton, Flower Mound, Highland Village and Lewisville locations for Fall 2025

Oh, the places they'll go!

Remember the excitement of your first day at school... new friends, books to explore and learning adventures you couldn't wait to tackle. Every day is just as exciting as the first at Lewisville ISD Discovery Academy, where developmental learning needs of children ages 3-4 are met with enriched academics, early STEM and creative development in music and the arts.

Who: Children who are 3 or 4 by Sept. 1, 2025
 Monthly tuition: \$840
 Registration: \$240 nonrefundable one-time payment
 Extended hours: 6:50 a.m. to 5:30 p.m.

Locations
 Carrollton | Memorial Elementary
 Flower Mound | Liberty Elementary
 Highland Village | Heritage Elementary
 Lewisville | Lillie J. Jackson Early Childhood Center
 Lewisville | Valley Ridge Elementary

Apply today
 Visit [LISD.net/discovery](https://lisd.net/discovery)
 Jan. 13 - Feb. 18

Limited spaces available.
 LEWISVILLE INDEPENDENT SCHOOL DISTRICT

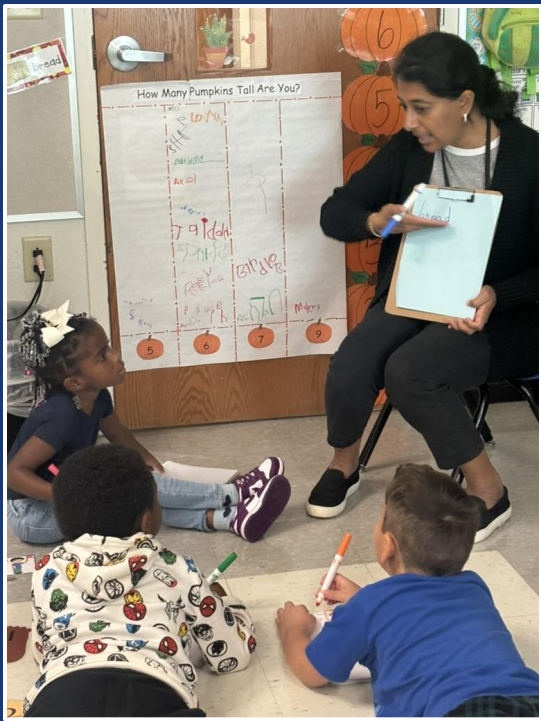
Attend a meeting

Liberty Elementary	Jan. 21, 5-6 p.m.
Virtual Meeting*	Jan. 23, 5-6 p.m.
Hebron Valley Elementary	Jan. 27, 5-6 p.m.
Heritage Elementary	Jan. 30, 5-6 p.m.
Lillie J. Jackson	Feb. 3, 5-6 p.m.
Valley Ridge Elementary	Feb. 6, 5-6 p.m.
Virtual Meeting*	Feb. 7, 4:30-5:30 p.m.

Meetings are for information only and do not obligate you to enroll.
 *Register for virtual meetings at lisd.net/discovery

Texas PreK Guidelines & Domains

- 10 Domains Focusing on the Whole Child
 - Social Emotional Development
 - Language and Communication
 - Emergent Literacy Reading
 - Emergent Literacy Writing
 - Mathematics
 - Science
 - Social Studies
 - Fine Arts
 - Physical Development
 - Technology



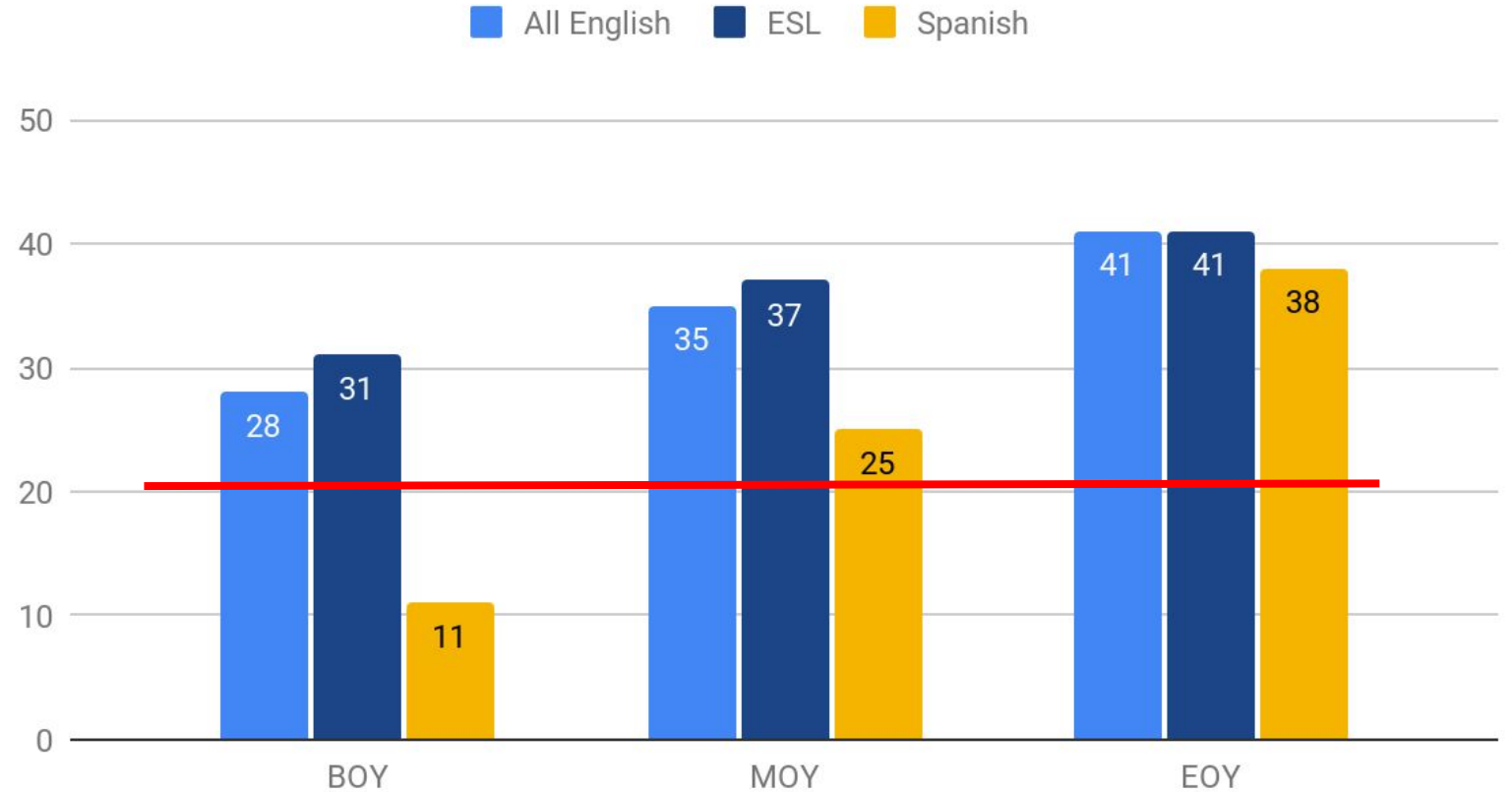
Emergent Reading

- PK4 Letter Knowledge



2023-24 PK4 Average Letter Knowledge

EOY PK4
Goal is 20

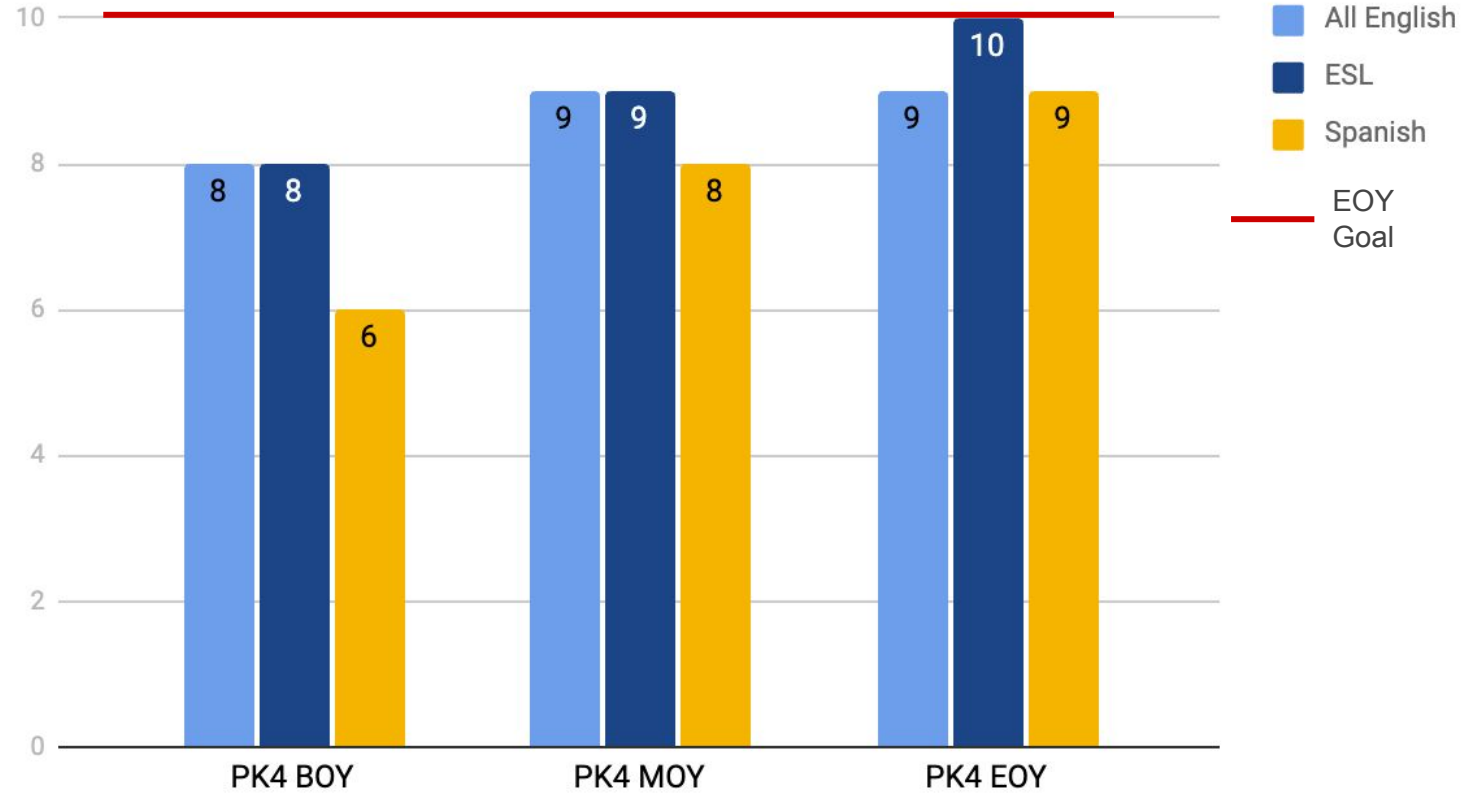


Math

- Counting with 1:1 Correspondence

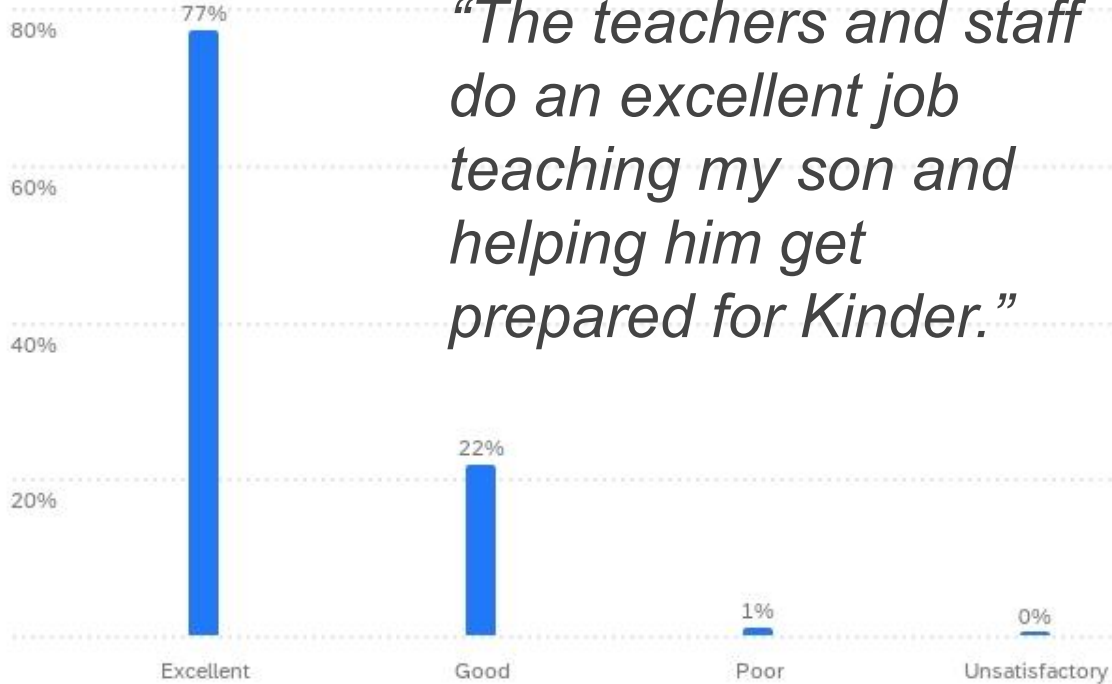


PK4 Object Counting 1:1 Correspondence 23-24



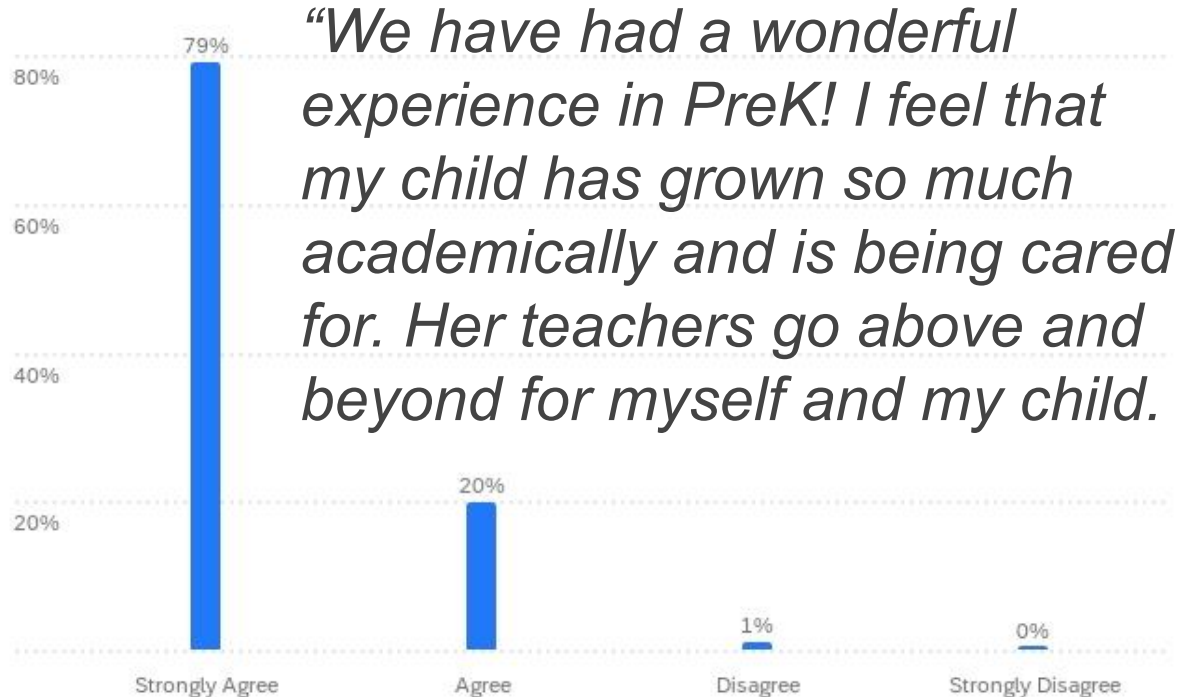
2024 Parent Early Childhood Survey Data

How would you rate your child's PreK experience in LISD? 355



“The teachers and staff do an excellent job teaching my son and helping him get prepared for Kinder.”

How strongly do you agree with the following statement, “My child is learning and growing in PreK”? 355



“We have had a wonderful experience in PreK! I feel that my child has grown so much academically and is being cared for. Her teachers go above and beyond for myself and my child.”

*Collected March 2024

“Since starting PreK, my son has grown a love for reading and art. I am so astonished at how well his writing and early literacy skills have flourished this school year!”



EARLY CHILDHOOD

Celebrations

- **Strong PreK Enrollment percentages**
- **2024 EC Summer School**
 - 669 Emergent Bilingual (ESL & BIL) students at three locations
 - STEM Wonder Wagon on site field trips
 - Field trips to LISDOLA
- **Summer 2024 Professional Learning**
 - 225 participants at 7 PL sessions



Program Goals

- Supporting 9 PreK classes who are relocating
- PreK Learning Walks with campus administrators
- 2025 EC Summer School
- 2025 Summer Professional Learning
- Longitudinal PreK study expected in 2025-26

EARLY
CHILDHOOD 



LISD EARLY CHILDHOOD





EARLY CHILDHOOD



Thank you!