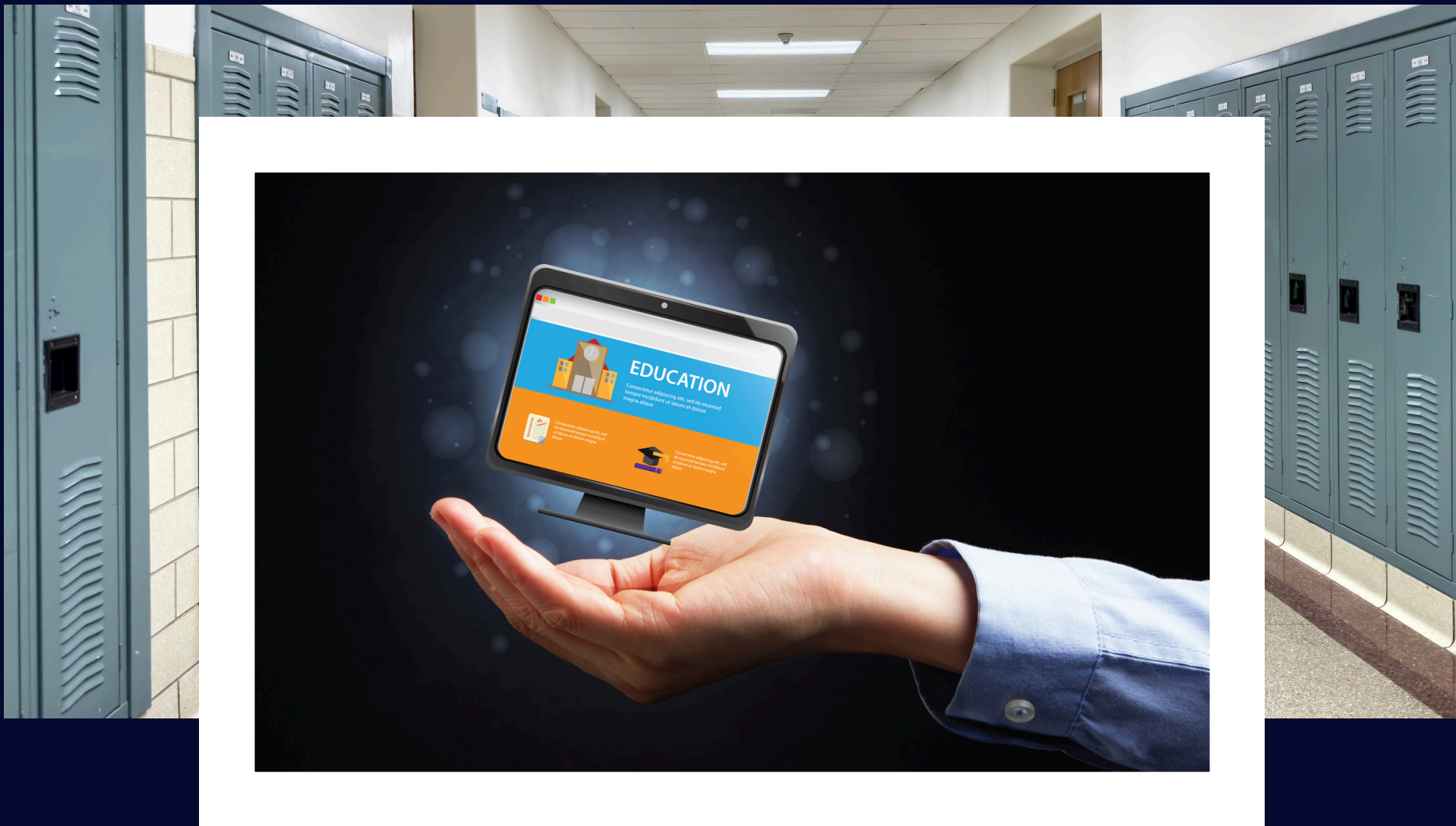


OWATONNA PUBLIC SCHOOLS

Online 

SCHOOL BOARD PRESENTATION

Dr. Martina Wagner	Kelly Kruger
7-12 Principal	K-6 Director



Owatonna Online: A Pathway to Flexible Learning

Owatonna Online provides a dynamic and personalized educational experience for students in grades K-12, offering the flexibility to learn from anywhere while maintaining high academic standards. Families seeking an alternative to traditional in-person schooling will find a supportive and adaptable environment tailored to individual needs.

Owatonna Online provides a wide range of support services to ensure that students succeed in their educational journey.



Personalized Learning Plans

Dedicated Support Staff

Academic Assistance

Social and Emotional Learning (SEL)

Technical Support

Collaboration and Community Building

Parent Involvement

Accessibility



K-6 Current Enrollments



Total Enrollment

34 Students

KINDERGARTEN	6
1ST GRADE	
2ND GRADE	
3RD GRADE	
4TH GRADE	6
5TH GRADE	6
6TH GRADE	16



Grades 4 - 6

(2025-2026)

K-6 Owatonna Online Staff

🍏 Meet our Homeroom Teachers!



Kayla Davis
K, 1, 2, 3, 4th Grade Teacher



Ruben Alvarez
5th & 6th Grade Teacher

🎨🎵 Meet our K-6 Owatonna Online Specialists 🎵🎨



Jake Dreifort
Music Teacher



Luke Holt
PE Teacher



Xandra Sorenson
Art Teacher

Behind the Scenes!

- **Kelly Kruger**, K-6 Owatonna Online Director
- **Cheryl Summer**, Administrative Assistant
- **Heather Schutte**, Special Education Assistant Director
- **Jessica Knox**, Special Education
- **Jill Storm**, Special Education
- **Rebecca Lemire**, Special Education
- **Annette Warner**, Social Worker
- **Jen Lopez**, English Language Development
- **Kacie Clauson**, Teaching and Learning Coach



8:30 AM	Get up & Ready for the day!	8:40-9:10 Day 5: 3-4 Art
9:00-9:30 AM	Pearson Work Language Arts	9:10 Tuesday & Wednesday Speech
9:30-9:50 AM	Reading with Mrs. Davis	
9:50-10:00 AM	BREAK Move your body	
10:00-10:20 AM	Morning Meeting with Mrs. Davis	
10:20-11:30	Pearson Work Language Arts	
11:30-12:00	Lunch Break	
12:00-1:00 PM	Pearson Work Math	12:40-1:10 Day 3: 3-4 PE
1:00-1:40 PM	BREAK Move your body	
1:40-2:40 PM	Pearson Work Science/Social Studies	1:10-1:40 Day 2: 3-4 Music
1:40-2:00 PM	Math Meeting with Mrs. Davis	
2:00-2:10 PM	BREAK Move your body	
2:10-3:00 PM	Pearson Work Art/Music/PE/Technology	

****Day 1-5 Rotation Schedule will be posted in Google Classroom and updated Weekly.
Please refer to the weekly schedule(s) for Specialist times.**

Owatonna Online Elementary Pathways

We recognize that online learning offers a variety of opportunities for families. This year we will be offering students and their families two different pathways. Each path is outlined below. You will have the opportunity to discuss each with your child's teacher and choose which option would work best during Before School Interviews.

Pathway 1 provides families with more flexibility to work through online learning throughout the day at their own pace. This pathway includes

- Fewer Google Meets throughout the day (only one required Morning Meeting daily)
- Office hours offered for check-in with teacher
- Scheduled weekly or monthly check-in with teacher, student, and Learning Coach



Pathway 2 provides families with higher level of teacher support in their online learning throughout the day. This pathway includes

- More teacher contact throughout the day with 2-4 scheduled Meets (including the required Morning Meeting)
- Additional office hours offered daily for check-in with teacher
- Scheduled check-ins with teacher, student, and Learning Coach



Daily Morning Meetings
Math and Reading Instruction
Small Group Support
Specials (Art, Music, PE)
Live Specialized Services

Weekly/Bi-Weekly Meetings-
Student, Learning Coach, Teacher

Goals and Celebrations

- READ ACT IMPLEMENTATION
- STRONG STUDENT AND FAMILY PARTNERSHIPS
- SOCIAL EMOTIONAL LEARNING
 - MORNING MEETINGS, ALL SCHOOL ASSEMBLIES





OWATONNA ONLINE GRADES 7-12



Counselor
Mrs. Melodee Hoffner



Principal/Director
Dr. Martina Wagner



Administrative Assistant
Cheryl Summer



Katie Schultz
English Language Arts



Melonie Sebring
Math



Nichole Schelling
Science



Hanna Mahan
Social Studies



Jessica Holz
Electives



Jen Lopez
English Language
Development &
Electives



Jessica Knox
Special Education



Jill Storm
Special Education



Troy Cohrs
English Language Arts
& Electives



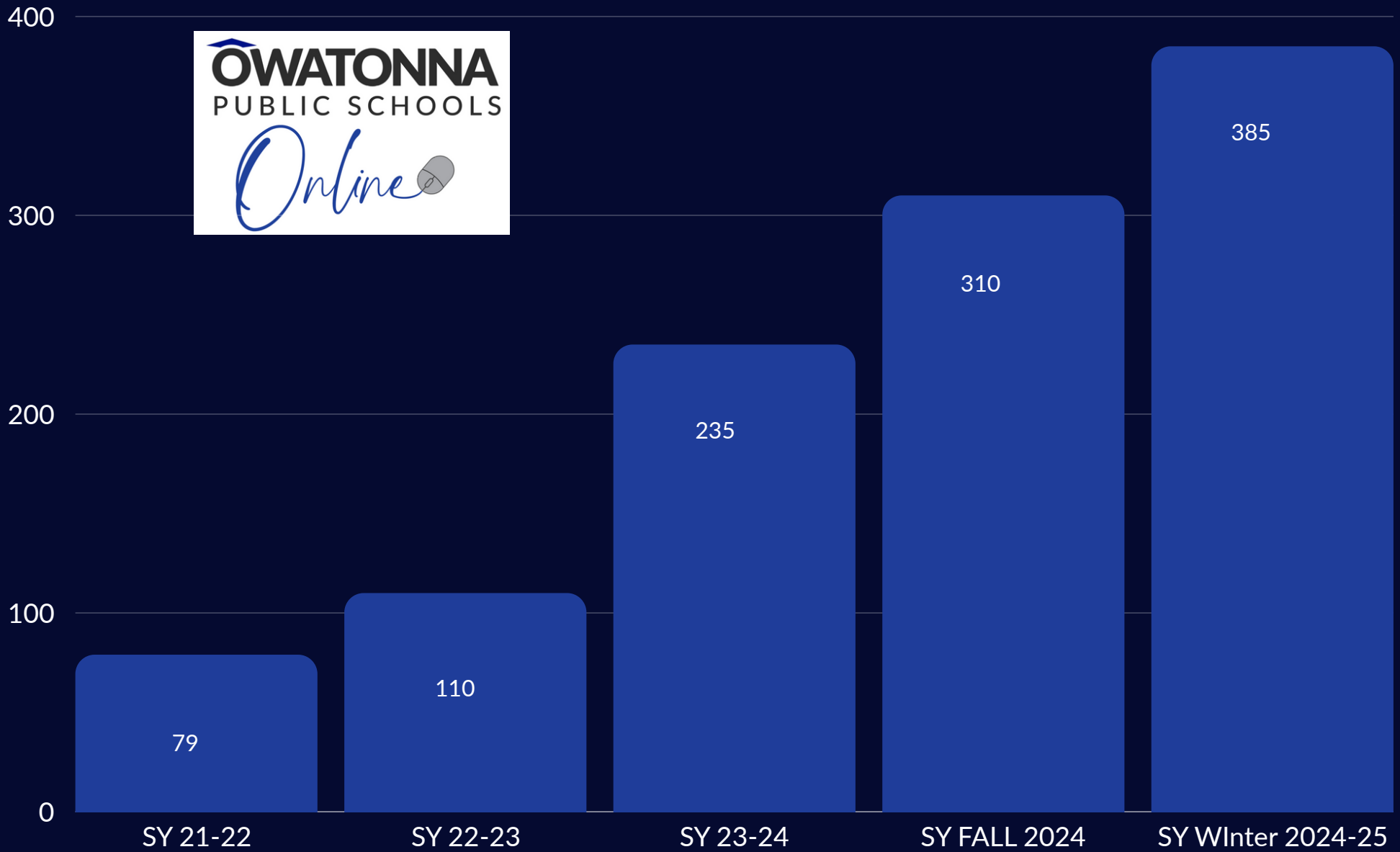
Michael Wheelock
Physical Education &
Electives

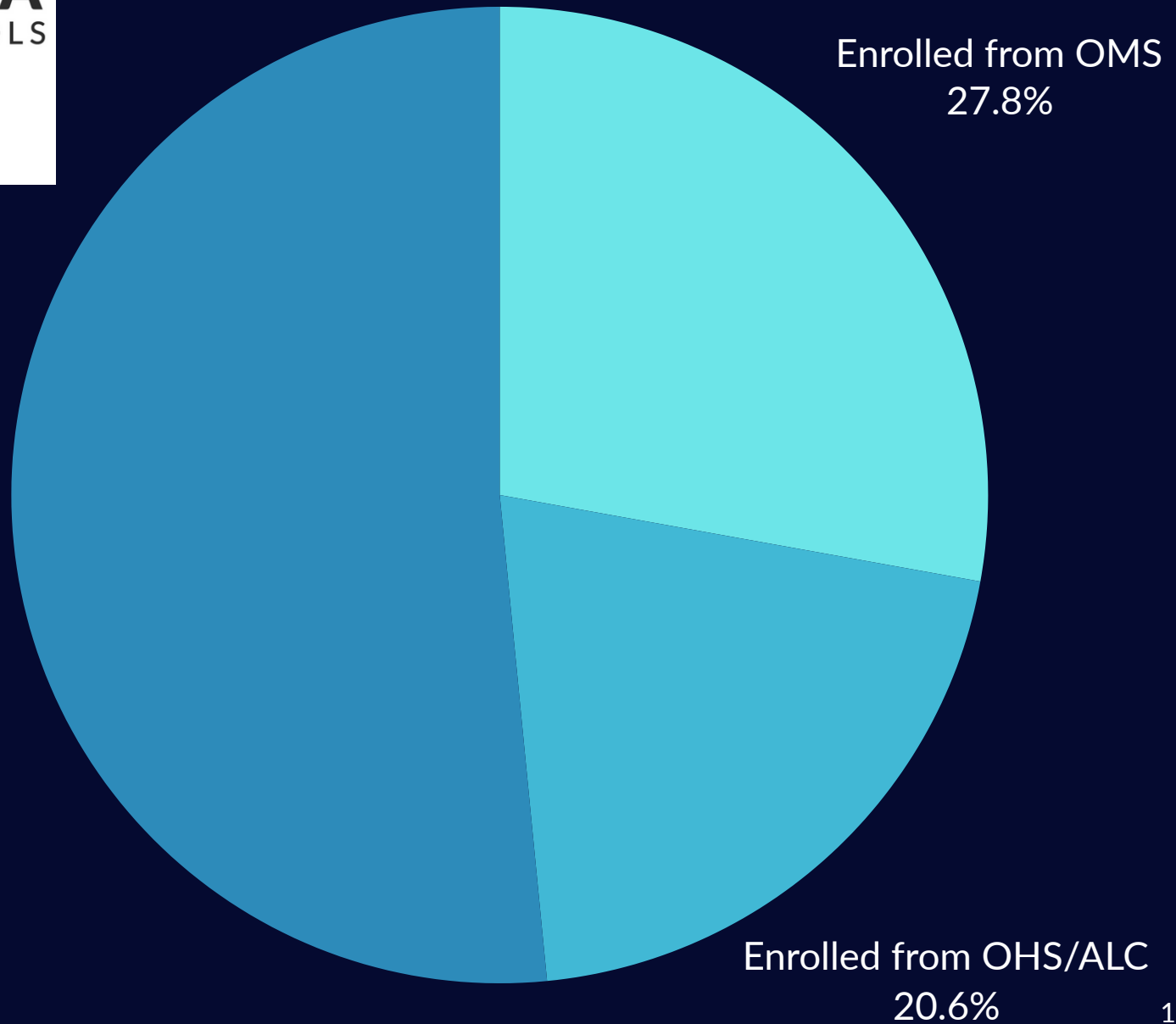


Jessica Klein
Art & Electives

**At Owatonna Online,
our staff is the cornerstone of our students' success.**

● 7-12 Enrollment Numbers





Where in Minnesota do our Students Open Enroll From?



Partnership Districts



MOORHEAD
AREA PUBLIC SCHOOLS



Edgenuity is a Learning Management System (LMS) designed to provide online and blended learning solutions for students in grades K-12.



Grades 7-8:

**Mandatory Live Sessions from
Monday to Thursday, focusing on
Core Content.
Friday is reserved for Live Advisory
Sessions.**

Grades 9-12

**4 Block Schedule
1:1 Tutoring | Small Group Support
Office Hours
Live Specialized Services
3 Tiers of Support**

Owatonna Online stands out with its NCAA-accredited courses, ensuring student-athletes stay on track for college eligibility. We offer unique opportunities like Work-Based Learning credits and career pathway options, allowing students to gain real-world experience while earning their diploma.



Our commitment to innovation and personalized support empowers students to achieve their goals in a flexible, high-quality online learning environment.



At Owatonna Online, we recognize the unique challenges many of our students face and are committed to providing wraparound support to optimize their learning experience.



Partnership Quotes and Quotables



Northfield Public Schools

Working with Owatonna Online has been a great experience. There is consistent communication and the follow through is very strong. It has been great to work with the staff and it has provided another choice for our students.

Daryl Kehler- Principal of Area Learning Center

East Grand Forks

Our collaboration provides a positive and supportive alternative learning environment for our EGF students. Together, we are focused on meeting the unique needs of our EGF students who learn best in an online environment. Owatonna school staff are responsive to student needs, dedicated to students' personal growth, and organized in keeping our schools connected and matching goals to meet East Grand Forks graduation requirements. Their plans to support students at the Tier 1, Tier 2, and Tier 3 levels are impressively individualized.

-Jill Walter EGF Middle School Principal

Moorhead Public Schools:

Our partnership with Owatonna Online has been exceptional and has provided incredible opportunities for our students in Moorhead. While we were not in a position to launch our own online program, this collaboration has allowed us to offer a high-quality, flexible learning option that meets the needs of our students. The communication between Owatonna Online and our students and staff at Moorhead has been outstanding, ensuring a seamless and supportive experience for all involved. We are grateful for this partnership and the positive impact it continues to have on our school community.

-Dave Lawrence Principal on Special Assignment Moorhead Public Schools

Student Quotes and Quotables



"I wanted to thank all of you for a great year! Thanks for all the help and assistance you have provided. You were all very great teachers that I was happy to work with and have!"

" I'm so happy we got to connect at live lessons and it was so fun playing blookets. I'm feel so lucky I got to be your student and hopefully will be next year as well. You're an awesome teacher!"

"Mrs. Sebring, Thanks for teaching me this year and really helping me understand math!"

" My favorite part of online learning is when I join our morning meeting and make new friends!"

What Questions Can We Answer?

