

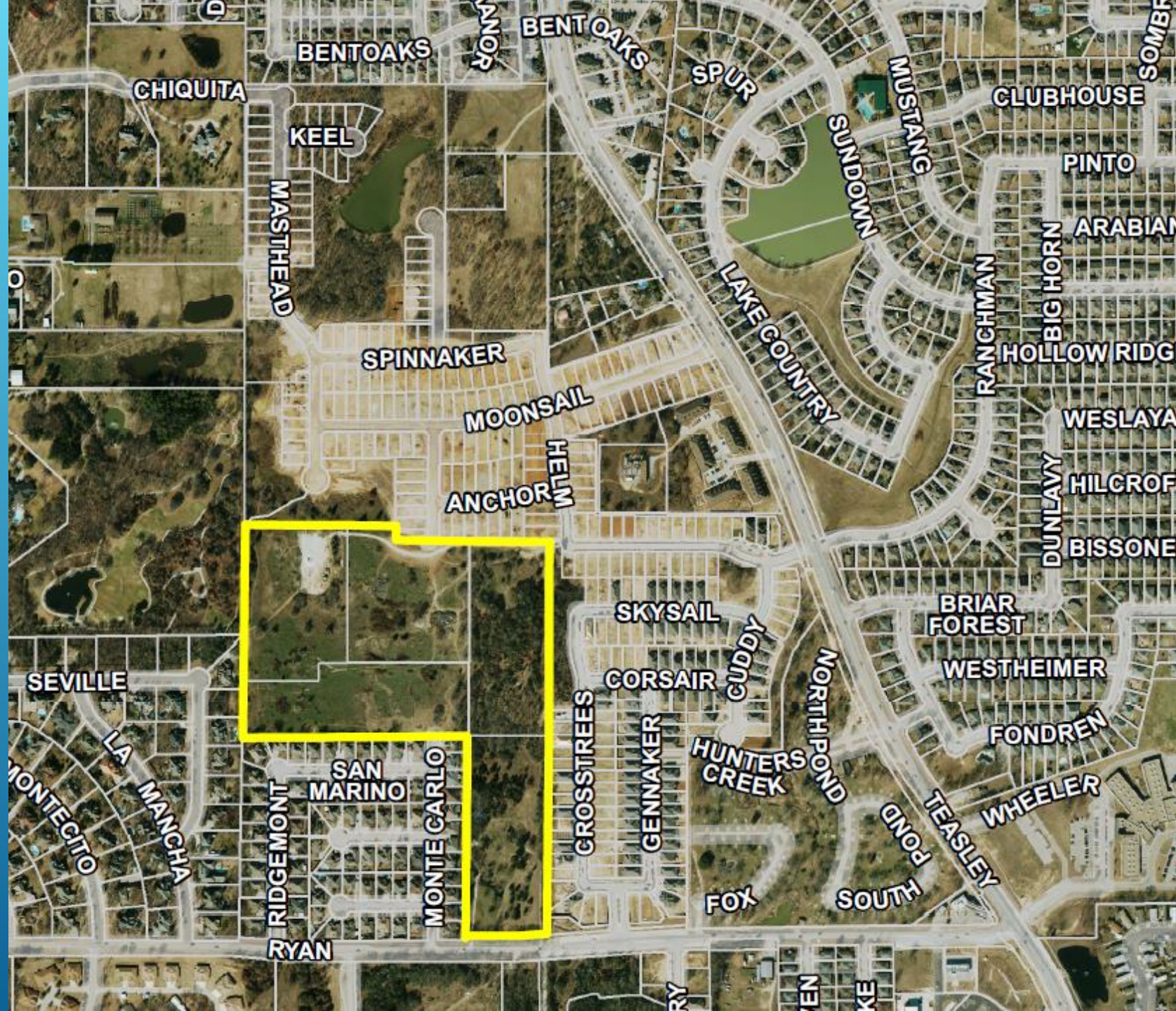
ASSIGNMENT OF FUTURE DEVELOPMENTS TO ATTENDANCE BOUNDARIES

Presented by Academic Programs

February 11, 2020

Proposed Modification W.S. Ryan/Houston

- Current development in process is north of Ryan Road in the area designated in the yellow box.
- Ryan Way is currently zoned for W.S. Ryan Elementary and we are proposing to rezone the area to Houston Elementary.
- The neighborhood to the east of development is zoned for Houston. The neighborhood to the west is zoned for W.S. Ryan.



Projections with Ryan Way in the Houston Zone

Campus	Capacity	19/20	20/21	21/22	22/23	23/24	24/25	25/26	26/27
Houston	740	595	586	572	573	574	579	598	601
W.S. Ryan	740	545	582	592	590	607	614	626	619

Projections with Ryan Way in the W.S. Ryan Zone

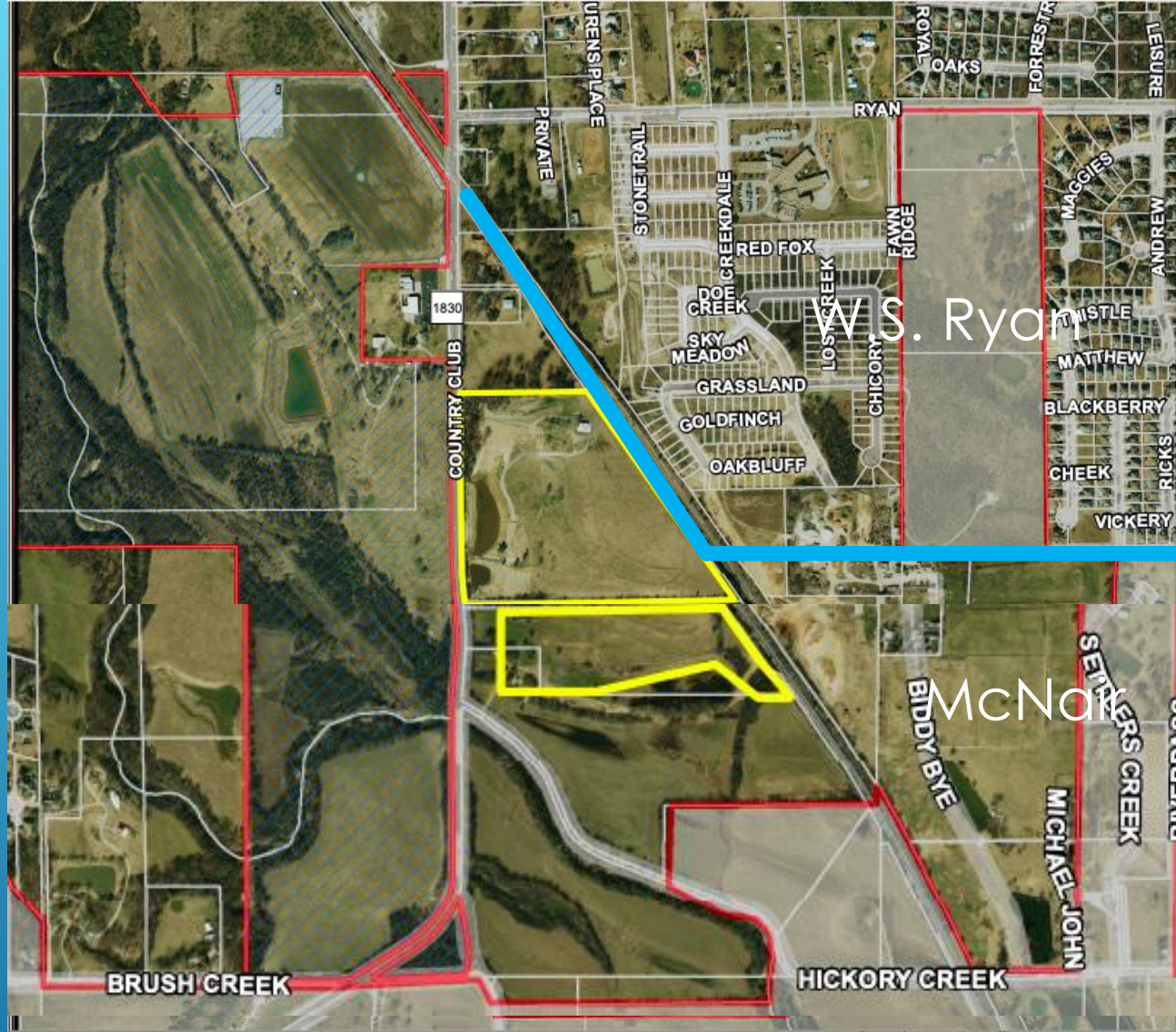
Campus	Capacity	19/20	20/21	21/22	22/23	23/24	24/25	25/26	26/27
Houston	740	595	586	572	565	558	555	566	569
W.S. Ryan	740	545	582	592	598	623	638	658	651

ENROLLMENT PROJECTIONS

Ryan Way will have 154 residential lots for detached single-family homes.

Proposed Modification W.S. Ryan/McNair

- Current development in process is east of Country Club in the area designated in the yellow box.
- Country Club Terrace is currently zoned for W.S. Ryan Elementary.
- We are proposing to rezone the area southwest of the railroad tracks, east of Country Club, and north of Hickory Creek to McNair Elementary.



Projections with Country Club Terrace in McNair Zone

Campus	Capacity	19/20	20/21	21/22	22/23	23/24	24/25	25/26	26/27
McNair	740	564	523	517	517	512	517	536	566
W.S. Ryan	740	545	582	592	590	607	614	626	619

Projections with Country Club Terrace in the W.S. Ryan Zone

Campus	Capacity	19/20	20/21	21/22	22/23	23/24	24/25	25/26	26/27
McNair	740	564	523	517	474	469	474	493	523
W.S. Ryan	740	545	582	592	633	650	657	669	662

ENROLLMENT PROJECTIONS

Country Club Terrace will have 183 residential lots for detached single-family homes.



QUESTIONS