



Collin College

2017 Capital Improvement Program
Monthly Report
July 2018

Collin County Community College District

Project Reference: 60541060
Project Number: 60541060

August 7, 2018

Quality information

Prepared by



Nick Fiehler
Program Controls Manager

Checked by



Nuria Cortes
Documents Control Manager

Approved By



Adrian Grimes
Program Director

Revision History

| Revision | Revision date | Details | Authorized | Name | Position |
|-------------------|---------------|-----------------|------------|---------------|------------------|
| First Publication | 08/07/2018 | July '18 Report | Yes | Adrian Grimes | Program Director |
| | | | | | |
| | | | | | |
| | | | | | |

Distribution List

| # Hard Copies | PDF Required | Association / Company Name |
|---------------|--------------|----------------------------|
| | 1 | Ken Lynn / Collin College |
| | 1 | Bill King / Collin College |
| | | |
| | | |

Prepared for:

Collin County Community College District
3452 Spur 399
Suite 327
McKinney, TX 75069

Prepared by:

Nick Fiehler
Program Controls Manager
E: nfiehler.aecom@collin.edu

AECOM
13355 Noel Road
4th Floor
Dallas TX, 75240
aecom.com

Copyright © 2018 by AECOM

All rights reserved. No part of this copyrighted work may be reproduced, distributed, or transmitted in any form or by any means without the prior written permission of AECOM.

Table of Contents

| | | |
|-------|---|----|
| 1. | Introduction | 5 |
| 2. | Executive Summary | 5 |
| 3. | Scope..... | 5 |
| 3.1 | Phase 1 | 5 |
| 3.2 | Phase 2 | 6 |
| 3.3 | Phase 3 | 6 |
| 3.4 | Phase 4 | 6 |
| 4. | Community..... | 7 |
| 4.1 | Project Teams..... | 7 |
| 4.1.1 | Phase 1 | 7 |
| 4.1.2 | Phase 2 | 7 |
| 4.1.3 | Phase 3 | 8 |
| 4.1.4 | Phase 4 | 8 |
| 4.2 | Current Personnel Estimate..... | 9 |
| 4.3 | Community Outreach..... | 9 |
| 5. | Schedule..... | 10 |
| 5.1 | Program..... | 10 |
| 5.2 | Phase 1 | 11 |
| 5.3 | Phase 2 | 12 |
| 5.4 | Phase 3 | 12 |
| 5.5 | Phase 4 | 13 |
| 6. | Budget | 14 |
| 6.1 | Program Summary..... | 14 |
| 6.2 | Phase 1 | 14 |
| 6.3 | Phase 2 | 15 |
| 6.4 | Phase 3 | 16 |
| 6.5 | Phase 4 | 16 |
| 6.6 | Phase A | 17 |
| 6.7 | Building Fund Reimbursement | 18 |
| 7. | Completed Items..... | 18 |
| 7.1 | General Program | 18 |
| 7.2 | Procurement..... | 18 |
| 7.3 | Design | 18 |
| 7.4 | Pre-Construction..... | 19 |
| 7.5 | Construction | 19 |
| 7.6 | Acceptance and Close-Out..... | 19 |
| 8. | Pending Items..... | 19 |
| 8.1 | General Program | 19 |
| 8.2 | Procurement..... | 19 |
| 8.3 | Design | 19 |
| 8.4 | Pre-Construction..... | 20 |
| 8.5 | Construction | 20 |
| 8.6 | Acceptance and Close-Out..... | 20 |
| | Appendix A – Schedule Milestone Definitions | 21 |

1. Introduction

On May 6, 2017, voters approved Collin College's \$600 million bond proposal to facilitate a long-range plan to accommodate the projected population growth in Collin County over the next two decades. The program consists of 4 new campuses, 3 new facilities, 2 repurposed existing spaces, and 3 wayfinding projects (on existing sites). The program is scheduled to be completed in 4 phases over 7 years with projects opening in 2020.

On May 16, 2017, in a special session, the Board of Trustees granted the District President authority to enter and negotiate into contract with AECOM Technical Services, Inc. (AECOM) to provide Program Management Services to the Collin College 2017 Capital Improvement Program. On May 25, 2017, Collin College issued a Notice to Proceed to AECOM. As part of these services, AECOM will deliver a monthly report to provide status and progress of key aspects of the Program.

2. Executive Summary

The Program is progressing as planned with no major issues to report at this time.

Completed and Pending Items

- [Perkins+Will, Inc. was issued a Notice to Proceed for Architectural Services on the IT Center of Excellence](#)
- [Beck Architecture, LLC was issued a Notice to Proceed for Architectural Services on the Celina Campus and Farmersville Campus](#)
- [Skanska USA Building, Inc. received bids from sub-contractors and began the sub evaluation process for the Wylie Campus](#)
- [Completion of the Phase 2 Procurements for the Construction Manager-at-Risk services RFP's](#)

Items of close attention

- Potential roadway intersection improvements currently required by the City of Wylie for the Wylie Campus
- Approval by the City of Wylie of a traffic signal on the south side of the site for the Wylie Campus
- Approval by the United States Army Corp of Engineers of wetlands mitigation for the Wylie Campus
- Coordination with the City of Allen to work around document approval timeframes to allow for scheduled commencement of construction for the Technical Campus
- The Wylie Campus design and construction schedules are being monitored closely to ensure construction can complete in Fall 2020, while maintaining budget and quality of construction

Budget Summary

- [\\$78,543,875 of the \\$600,000,000 has been committed to-date in the form of contracts with various vendors. This represents 13.09% of the overall program budget committed.](#)
- [\\$61,565,928 of the \\$78,543,875 committed amount has been expended to-date. This represents 78.38% of the commitments expended and 10.26% of the program budget expended.](#)

3. Scope

3.1 Phase 1

- Wylie Campus
 - Construction of a campus on a new approximately 97-acre site

- The campus is planned to include:
 - Campus Commons
 - Learning Resource Center / Library
 - Student Center
- Technical Campus
 - Construction of a Technical Campus on a new 32-acre site in Allen, Texas
 - Programs planned for inclusion include:
 - Advanced Manufacturing, Aviation Technology, Construction, Health Science, Logistics and Transportation

3.2 Phase 2

- Celina Campus
 - Construction of a campus on a new approximately 75-acre site
 - The campus is planned to include:
 - Student Union / Workforce / Instructional Building
- Farmersville Campus
 - Construction of a campus on a new approximately 76-acre site
 - The campus is planned to include:
 - Student Union / Workforce / Instructional Building
- Frisco Campus
 - Construction of a new facility on an existing campus
 - The campus is planned to include:
 - IT Center of Excellence

3.3 Phase 3

- Frisco Campus
 - Construction of a new facility on an existing campus
 - The campus is planned to include:
 - Welcome Center
- McKinney Campus
 - Construction of a new facility on an existing campus
 - The campus is planned to include:
 - Welcome Center

3.4 Phase 4

- Frisco Campus
 - Renovations / Repurposing of Existing Buildings
- McKinney Campus

- Renovations / Repurposing of Existing Buildings
- McKinney Campus
 - Traffic Infrastructure & Wayfinding
- Frisco Campus
 - Wayfinding
- Plano Campus
 - Wayfinding

4. Community

4.1 Project Teams

4.1.1 Phase 1

- Wylie Campus
 - Program Manager: AECOM Technical Services, Inc. (under contract)
 - A/E: Page Southerland Page, Inc. (under contract)
 - MEP: Reed, Wells, Benson & Co.
 - Civil Engineer: Pacheco Koch Consulting Engineers, Inc.
 - Cost Consulting: Vermeulens
 - Construction Manager-at-Risk: Skanska USA Building, Inc. (under contract)
 - Commissioning Agent: Bath Group, Inc. (under contract)
- Technical Campus
 - Program Manager: AECOM Technical Services, Inc. (under contract)
 - A/E: Perkins+Will, Inc. (under contract)
 - Associate Architect: Hoefer Wysocki Architecture
 - MEP: Purdy McGuire
 - Civil Engineer: Pacheco Koch Consulting Engineers, Inc.
 - Structural Engineer: L.A. Fuess Partners, Inc.
 - Cost Consulting: Vermeulens
 - Construction Manager-at-Risk: McCarthy Building Companies, Inc. (under contract)
 - Commissioning Agent: Farnsworth (under contract)

4.1.2 Phase 2

- Celina Campus
 - Program Manager: AECOM (under contract)
 - A/E: Beck Architecture, LLC (under contract)
 - Construction Manager-at-Risk: TBD
- Farmersville Campus

- Program Manager: AECOM (under contract)
- A/E: A/E: Beck Architecture, LLC (under contract)
- Construction Manager-at-Risk: TBD
- Frisco Campus (IT Center of Excellence)
 - Program Manager: AECOM (under contract)
 - A/E: Perkins+Will, Inc. (under contract)
 - Construction Manager-at-Risk: TBD

4.1.3 Phase 3

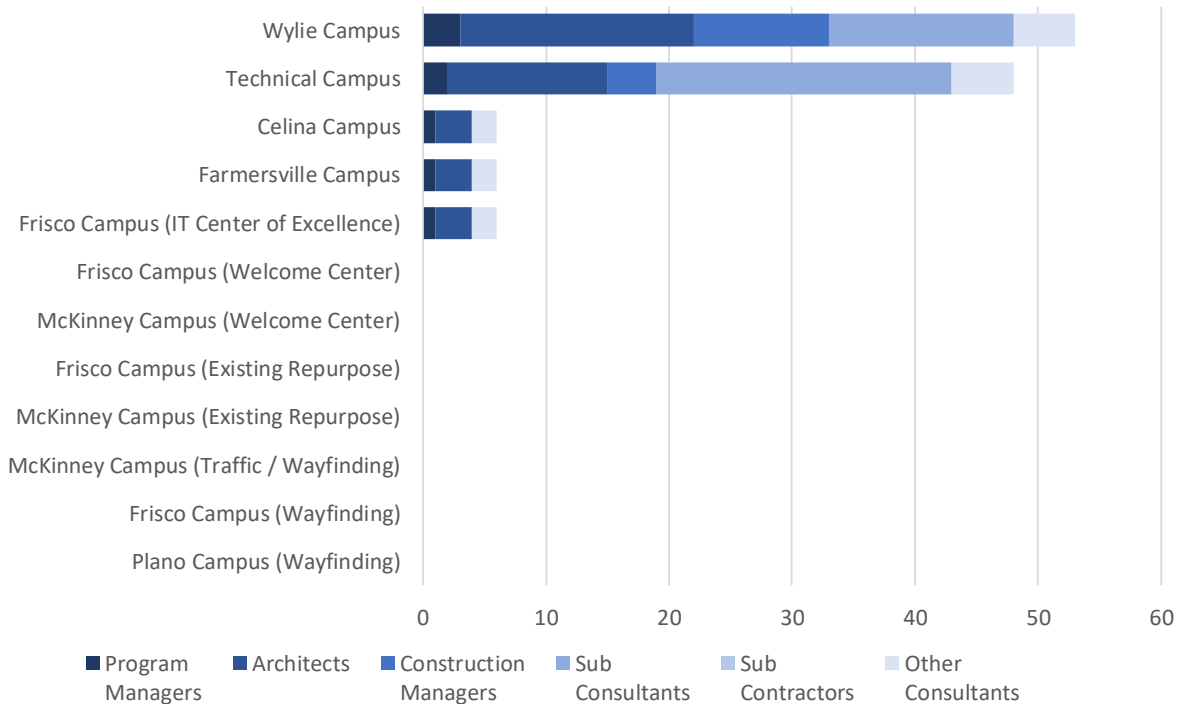
- Frisco Campus (Welcome Center)
 - Program Manager: (AECOM option expiration date: August 2019)
 - A/E: TBD
 - Construction Manager-at-Risk: TBD
- McKinney Campus (Welcome Center)
 - Program Manager: (AECOM option expiration date: August 2019)
 - A/E: TBD
 - Construction Manager-at-Risk: TBD

4.1.4 Phase 4

- Frisco Campus (Existing Repurpose)
 - Program Manager: (AECOM option expiration date: May 2021)
 - A/E: TBD
 - Construction Manager-at-Risk: TBD
- McKinney Campus (Existing Repurpose)
 - Program Manager: (AECOM option expiration date: May 2021)
 - A/E: TBD
 - Construction Manager-at-Risk: TBD
- McKinney Campus (Traffic / Wayfinding)
 - Program Manager: (AECOM option expiration date: May 2021)
 - A/E: TBD
 - Construction Manager-at-Risk: TBD
- Frisco Campus (Wayfinding)
 - Program Manager: (AECOM option expiration date: May 2021)
 - A/E: TBD
 - Construction Manager-at-Risk: TBD
- Plano Campus (Wayfinding)

- Program Manager: (AECOM option expiration date: May 2021)
- A/E: TBD
- Construction Manager-at-Risk: TBD

4.2 Current Personnel Estimate



It is estimated that the Program Managers, Architects, Construction Managers, Sub-Consultants, and Sub-Contractors, under contract with Collin College for the 2017 Capital Improvement Program, have 119 employees contributing to the program’s progress.

4.3 Community Outreach

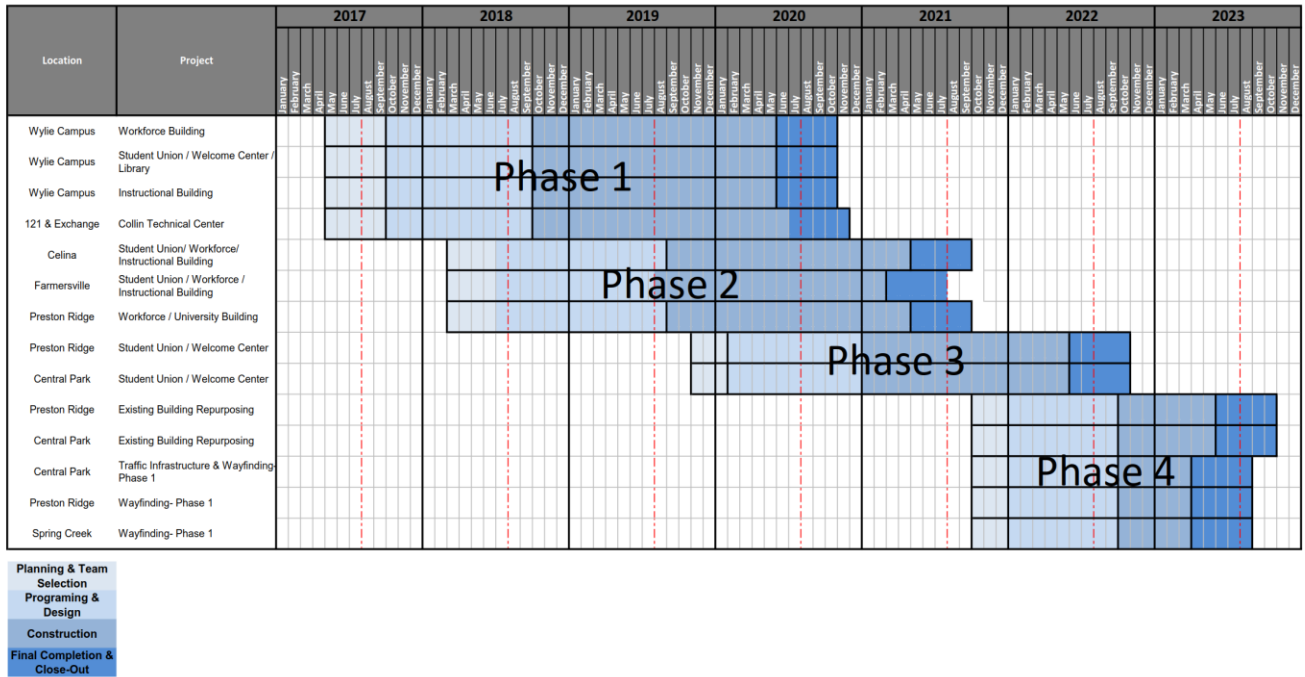
- Collin College 2017 Capital Improvement Program Website
 - o <https://CollinCollege2017CIP.com>
 - o Includes the following features:
 - Program Overview
 - Project Scopes
 - Project Schedules

- Project Budgets
- Progress Photos/Renderings
- Live On-Site Camera Feeds

5. Schedule

Appendix A – Schedule Milestone Definitions includes listing of milestones and definitions

5.1 Program



5.2 Phase 1

Wylie Campus

| Activity | Baseline Finish | Planned Finish | | Actual Finish | |
|--|--------------------|--------------------|---|--------------------|---|
| BOT Approval of Program Manager | May 16, 2017 | May 16, 2017 | ↑ | May 16, 2017 | ✓ |
| BOT Approval of A/E Procurement Method | May 23, 2017 | May 23, 2017 | ↑ | May 23, 2017 | ✓ |
| BOT Approval of Construction Delivery Method | May 23, 2017 | May 23, 2017 | ↑ | May 23, 2017 | ✓ |
| BOT Approval of Recommended Firms | August 22, 2017 | August 22, 2017 | ↑ | August 22, 2017 | ✓ |
| Architect Mobilized | September 12, 2017 | September 29, 2017 | ↓ | September 28, 2017 | ✓ |
| GMP Construction Documents Submittal | June 26, 2018 | June 26, 2018 | ↑ | June 26, 2018 | ✓ |
| BOT Approval of GMP | August 28, 2018 | August 28, 2018 | ↑ | | |
| Contractor Mobilized | September 10, 2018 | September 10, 2018 | ↑ | - | |
| Foundations Complete | TBD | TBD | | - | |
| Building Top Out | TBD | TBD | | - | |
| Building Dry-In | TBD | TBD | | - | |
| Building Energized | TBD | TBD | | - | |
| Building Climatized | TBD | TBD | | - | |
| Temporary CO | TBD | TBD | | - | |
| Final CO | TBD | TBD | | - | |
| Substantial Completion | May 1, 2020 | May 1, 2020 | ↑ | - | |
| Final Completion | July 1, 2020 | July 1, 2020 | ↑ | - | |
| Student Occupancy | August 2020 | August 2020 | ↑ | - | |

Technical Campus

| Activity | Baseline Finish | Planned Finish | | Actual Finish | |
|--|--------------------|--------------------|---|--------------------|---|
| BOT Approval of Program Manager | May 16, 2017 | May 16, 2017 | ↑ | May 16, 2017 | ✓ |
| BOT Approval of A/E Procurement Method | May 23, 2017 | May 23, 2017 | ↑ | May 23, 2017 | ✓ |
| BOT Approval of Construction Delivery Method | May 23, 2017 | May 23, 2017 | ↑ | May 23, 2017 | ✓ |
| BOT Approval of Recommended Firms | August 22, 2017 | August 22, 2017 | ↑ | August 22, 2017 | ✓ |
| Architect Mobilized | September 12, 2017 | September 29, 2017 | ↓ | September 28, 2017 | ✓ |
| GMP Construction Documents Submittal | April 16, 2018 | April 16, 2018 | ↑ | April 19, 2018 | ✓ |
| BOT Approval of GMP | June 26, 2018 | June 26, 2018 | ↑ | June 26, 2018 | ✓ |
| Contractor Mobilized | July 6, 2018 | July 20, 2018 | ↘ | July 26, 2018 | ✓ |
| Foundations Complete | September 23, 2019 | September 23, 2019 | ↑ | - | |
| Building Top Out | November 18, 2019 | November 18, 2019 | ↑ | - | |
| Building Dry-In | December 20, 2019 | December 20, 2019 | ↑ | - | |
| Building Energized | TBD | TBD | | - | |
| Building Climatized | TBD | TBD | | - | |
| Temporary CO | TBD | TBD | | - | |
| Final CO | June 11, 2020 | June 11, 2020 | ↑ | - | |
| Substantial Completion | June 25, 2020 | June 25, 2020 | ↑ | - | |
| Final Completion | August 25, 2020 | August 25, 2020 | ↑ | - | |
| Student Occupancy | August 2020 | August 2020 | ↑ | - | |

5.3 Phase 2

Celina Campus

| Activity | Baseline Finish | Planned Finish | | Actual Finish | |
|--|--------------------|-------------------|---|-------------------|---|
| BOT Approval of Program Manager | September 25, 2018 | February 14, 2018 | ↑ | February 14, 2018 | ✓ |
| BOT Approval of A/E Procurement Method | September 25, 2018 | March 27, 2018 | ↑ | March 27, 2018 | ✓ |
| BOT Approval of Construction Delivery Method | September 25, 2018 | March 27, 2018 | ↑ | March 27, 2018 | ✓ |
| BOT Approval of Recommended A/E Firm | June 26, 2018 | June 26, 2018 | ↑ | June 26, 2018 | ✓ |
| BOT Approval of Recommended CM Firm | August 2018 | August 2018 | ↑ | - | |
| Architect Mobilized | July 24, 2018 | July 24, 2018 | ↑ | July 31, 2018 | ✓ |
| Student Occupancy | August 2021 | August 2021 | ↑ | - | |

Farmersville Campus

| Activity | Baseline Finish | Planned Finish | | Actual Finish | |
|--|--------------------|-------------------|---|-------------------|---|
| BOT Approval of Program Manager | September 25, 2018 | February 14, 2018 | ↑ | February 14, 2018 | ✓ |
| BOT Approval of A/E Procurement Method | September 25, 2018 | March 27, 2018 | ↑ | March 27, 2018 | ✓ |
| BOT Approval of Construction Delivery Method | September 25, 2018 | March 27, 2018 | ↑ | March 27, 2018 | ✓ |
| BOT Approval of Recommended A/E Firm | June 26, 2018 | June 26, 2018 | ↑ | June 26, 2018 | ✓ |
| BOT Approval of Recommended CM Firm | August 2018 | August 2018 | ↑ | - | |
| Architect Mobilized | July 24, 2018 | July 24, 2018 | ↑ | July 31, 2018 | ✓ |
| Student Occupancy | August 2021 | August 2021 | ↑ | - | |

Frisco Campus (IT Center of Excellence)

| Activity | Baseline Finish | Planned Finish | | Actual Finish | |
|--|--------------------|-------------------|---|-------------------|---|
| BOT Approval of Program Manager | September 25, 2018 | February 14, 2018 | ↑ | February 14, 2018 | ✓ |
| BOT Approval of A/E Procurement Method | September 25, 2018 | March 27, 2018 | ↑ | March 27, 2018 | ✓ |
| BOT Approval of Construction Delivery Method | September 25, 2018 | March 27, 2018 | ↑ | March 27, 2018 | ✓ |
| BOT Approval of Recommended A/E Firm | June 26, 2018 | June 26, 2018 | ↑ | June 26, 2018 | ✓ |
| BOT Approval of Recommended CM Firm | August 2018 | August 2018 | ↑ | - | |
| Architect Mobilized | July 24, 2018 | July 24, 2018 | ↑ | July 30, 2018 | ✓ |
| Student Occupancy | August 2021 | August 2021 | ↑ | - | |

5.4 Phase 3

Frisco Campus (Welcome Center)

| Activity | Baseline Finish | Planned Finish | | Actual Finish | |
|--|-----------------|----------------|---|---------------|--|
| BOT Approval of Program Manager | November 2019 | November 2019 | ↑ | - | |
| BOT Approval of A/E Procurement Method | November 2019 | November 2019 | ↑ | - | |
| BOT Approval of Construction Delivery Method | November 2019 | November 2019 | ↑ | - | |
| Student Occupancy | August 2022 | August 2022 | ↑ | - | |

McKinney Campus (Welcome Center)

| Activity | Baseline Finish | Planned Finish | | Actual Finish |
|--|-----------------|----------------|---|---------------|
| BOT Approval of Program Manager | November 2019 | November 2019 | ↑ | - |
| BOT Approval of A/E Procurement Method | November 2019 | November 2019 | ↑ | - |
| BOT Approval of Construction Delivery Method | November 2019 | November 2019 | ↑ | - |
| Student Occupancy | August 2022 | August 2022 | ↑ | - |

5.5 Phase 4**Frisco Campus (Existing Repurpose)**

| Activity | Baseline Finish | Planned Finish | | Actual Finish |
|--|-----------------|----------------|---|---------------|
| BOT Approval of Program Manager | October 2021 | October 2021 | ↑ | - |
| BOT Approval of A/E Procurement Method | October 2021 | October 2021 | ↑ | - |
| BOT Approval of Construction Delivery Method | October 2021 | October 2021 | ↑ | - |
| Student Occupancy | August 2023 | August 2023 | ↑ | - |

McKinney Campus (Existing Repurpose)

| Activity | Baseline Finish | Planned Finish | | Actual Finish |
|--|-----------------|----------------|---|---------------|
| BOT Approval of Program Manager | October 2021 | October 2021 | ↑ | - |
| BOT Approval of A/E Procurement Method | October 2021 | October 2021 | ↑ | - |
| BOT Approval of Construction Delivery Method | October 2021 | October 2021 | ↑ | - |
| Student Occupancy | August 2023 | August 2023 | ↑ | - |

McKinney Campus (Traffic / Wayfinding)

| Activity | Baseline Finish | Planned Finish | | Actual Finish |
|--|-----------------|----------------|---|---------------|
| BOT Approval of Program Manager | October 2021 | October 2021 | ↑ | - |
| BOT Approval of A/E Procurement Method | October 2021 | October 2021 | ↑ | - |
| BOT Approval of Construction Delivery Method | October 2021 | October 2021 | ↑ | - |
| Student and Staff Use | August 2023 | August 2023 | ↑ | - |

Frisco Campus (Wayfinding)

| Activity | Baseline Finish | Planned Finish | | Actual Finish |
|--|-----------------|----------------|---|---------------|
| BOT Approval of Program Manager | October 2021 | October 2021 | ↑ | - |
| BOT Approval of A/E Procurement Method | October 2021 | October 2021 | ↑ | - |
| BOT Approval of Construction Delivery Method | October 2021 | October 2021 | ↑ | - |
| Student and Staff Use | August 2023 | August 2023 | ↑ | - |

Plano Campus (Wayfinding)

| Activity | Baseline Finish | Planned Finish | | Actual Finish |
|--|-----------------|----------------|---|---------------|
| BOT Approval of Program Manager | October 2021 | October 2021 | ↑ | - |
| BOT Approval of A/E Procurement Method | October 2021 | October 2021 | ↑ | - |
| BOT Approval of Construction Delivery Method | October 2021 | October 2021 | ↑ | - |
| Student and Staff Use | August 2023 | August 2023 | ↑ | - |

6. Budget

6.1 Program Summary

Program Wide Budget

| Budget Group | Original Budget | Current Budget | Commitments | Expenditures | % of Budget Committed | % of Commitment Expended |
|--|----------------------|----------------------|---------------------|---------------------|-----------------------|--------------------------|
| Management, Design, & Pre-Construction | \$54,010,598 | \$53,545,468 | \$29,054,867 | \$12,762,948 | 54% | 44% |
| Investigation, Testing & Verification | \$9,330,450 | \$9,312,900 | \$912,162 | \$226,135 | 10% | 25% |
| Construction, Equipment & Furnishings | \$463,778,252 | \$500,836,989 | \$19,260,355 | \$19,260,355 | 4% | 100% |
| Misc. | \$439,079 | \$514,172 | \$83,006 | \$83,006 | 16% | 100% |
| Contingency | \$21,291,621 | \$18,956,986 | \$0 | \$0 | 0% | 0% |
| Total Project Budget | \$600,000,000 | \$600,000,000 | \$78,543,875 | \$61,565,928 | | |
| % of Total Project Budget Committed | | 13.09% | | | | |
| % of Total Commitments Expended | | 78.38% | | | | |
| % of Total Project Budget Expended | | 10.26% | | | | |

6.2 Phase 1

Wylie Campus

| Budget Group | Original Budget | Current Budget | Commitments | Expenditures | % of Budget Committed | % of Commitment Expended |
|--|----------------------|----------------------|---------------------|---------------------|-----------------------|--------------------------|
| Management, Design, & Pre-Construction | \$15,051,440 | \$12,793,572 | \$12,679,455 | \$6,908,004 | 99% | 54% |
| Investigation, Testing & Verification | \$2,679,247 | \$2,661,697 | \$175,250 | \$117,933 | 7% | 67% |
| Construction, Equipment & Furnishings | \$133,174,284 | \$144,611,102 | \$8,597,436 | \$8,597,436 | 6% | 100% |
| Misc. | \$126,082 | \$177,054 | \$52,503 | \$52,503 | 30% | 100% |
| Contingency | \$6,571,649 | \$5,841,364 | \$0 | \$0 | 0% | 0% |
| Total Project Budget | \$157,602,702 | \$166,084,789 | \$21,504,644 | \$15,675,876 | | |
| % of Total Project Budget Committed | | 12.95% | | | | |
| % of Total Commitments Expended | | 72.90% | | | | |
| % of Total Project Budget Expended | | 9.44% | | | | |

Technical Campus

| Budget Group | Original Budget | Current Budget | Commitments | Expenditures | % of Budget Committed | % of Commitment Expended |
|---|----------------------|----------------------|---------------------|---------------------|-----------------------|--------------------------|
| Management, Design, & Pre-Construction | \$14,713,206 | \$13,363,255 | \$13,255,412 | \$5,774,943 | 99% | 44% |
| Investigation, Testing & Verification | \$2,619,039 | \$2,619,039 | \$700,612 | \$94,102 | 27% | 13% |
| * Construction, Equipment & Furnishings | \$130,181,602 | \$156,173,521 | \$10,662,919 | \$10,662,919 | 7% | 100% |
| Misc. | \$123,249 | \$142,065 | \$22,838 | \$22,838 | 16% | 100% |
| Contingency | \$6,423,972 | \$4,824,927 | \$0 | \$0 | 0% | 0% |
| Allen ISD Reimbursement | - | (\$12,000,000) | - | - | | |
| Allen EDC Grant | - | (\$400,000) | - | - | | |
| Total Project Budget | \$154,061,068 | \$164,722,807 | \$24,641,781 | \$16,554,802 | | |
| % of Total Project Budget Committed | 14.96% | | | | | |
| % of Total Commitments Expended | 67.18% | | | | | |
| % of Total Project Budget Expended | 10.05% | | | | | |

* Actual Budget from bond funds is \$143,774,001 (\$156,174,001 less \$12,000,000 Allen ISD Reimbursement and \$400,000 Allen EDC Grant)

6.3 Phase 2

Celina Campus

| Budget Group | Original Budget | Current Budget | Commitments | Expenditures | % of Budget Committed | % of Commitment Expended |
|--|---------------------|---------------------|--------------------|-----------------|-----------------------|--------------------------|
| Management, Design, & Pre-Construction | \$5,078,807 | \$5,078,807 | \$1,067,000 | \$31,040 | 21% | 3% |
| Investigation, Testing & Verification | \$936,908 | \$936,908 | \$15,000 | \$0 | 2% | 0% |
| Construction, Equipment & Furnishings | \$46,569,862 | \$46,569,862 | \$0 | \$0 | 0% | 0% |
| Misc. | \$44,090 | \$49,394 | \$6,426 | \$6,426 | 13% | 100% |
| Contingency | \$2,482,596 | \$2,477,292 | \$0 | \$0 | 0% | 0% |
| Total Project Budget | \$55,112,263 | \$55,112,263 | \$1,088,426 | \$37,466 | | |
| % of Total Project Budget Committed | 1.97% | | | | | |
| % of Total Commitments Expended | 3.44% | | | | | |
| % of Total Project Budget Expended | 0.07% | | | | | |

Farmersville Campus

| Budget Group | Original Budget | Current Budget | Commitments | Expenditures | % of Budget Committed | % of Commitment Expended |
|--|---------------------|---------------------|------------------|-----------------|-----------------------|--------------------------|
| Management, Design, & Pre-Construction | \$2,539,404 | \$2,539,404 | \$533,500 | \$15,520 | 21% | 3% |
| Investigation, Testing & Verification | \$468,453 | \$468,453 | \$14,100 | \$14,100 | 3% | 100% |
| Construction, Equipment & Furnishings | \$23,284,932 | \$23,284,932 | \$0 | \$0 | 0% | 0% |
| Misc. | \$22,045 | \$22,045 | \$1,240 | \$1,240 | 6% | 100% |
| Contingency | \$1,241,298 | \$1,241,298 | \$0 | \$0 | 0% | 0% |
| Total Project Budget | \$27,556,132 | \$27,556,132 | \$548,840 | \$30,860 | | |
| % of Total Project Budget Committed | 1.99% | | | | | |
| % of Total Commitments Expended | 5.62% | | | | | |
| % of Total Project Budget Expended | 0.11% | | | | | |

Frisco Campus (IT Center of Excellence)

| Budget Group | Original Budget | Current Budget | Commitments | Expenditures | % of Budget Committed | % of Commitment Expended |
|--|---------------------|---------------------|--------------------|-----------------|-----------------------|--------------------------|
| Management, Design, & Pre-Construction | \$5,472,853 | \$5,472,853 | \$1,149,500 | \$33,440 | 21% | 3% |
| Investigation, Testing & Verification | \$1,009,600 | \$1,009,600 | \$7,200 | \$0 | 1% | 0% |
| Construction, Equipment & Furnishings | \$50,183,042 | \$50,183,042 | \$0 | \$0 | 0% | 0% |
| Misc. | \$47,510 | \$47,510 | \$0 | \$0 | 0% | 0% |
| Contingency | \$2,675,210 | \$2,675,210 | \$0 | \$0 | 0% | 0% |
| Total Project Budget | \$59,388,215 | \$59,388,215 | \$1,156,700 | \$33,440 | | |
| % of Total Project Budget Committed | 1.95% | | | | | |
| % of Total Commitments Expended | 2.89% | | | | | |
| % of Total Project Budget Expended | 0.06% | | | | | |

6.4 Phase 3**Frisco Campus (Welcome Center)**

| Budget Group | Original Budget | Current Budget | Commitments | Expenditures | % of Budget Committed | % of Commitment Expended |
|-------------------------------------|---------------------|---------------------|-------------|--------------|-----------------------|--------------------------|
| Total Project Budget | \$26,329,788 | \$26,329,788 | \$0 | \$0 | | |
| % of Total Project Budget Committed | 0.00% | | | | | |
| % of Total Commitments Expended | 0.00% | | | | | |
| % of Total Project Budget Expended | 0.00% | | | | | |

McKinney Campus (Welcome Center)

| Budget Group | Original Budget | Current Budget | Commitments | Expenditures | % of Budget Committed | % of Commitment Expended |
|-------------------------------------|---------------------|---------------------|-------------|--------------|-----------------------|--------------------------|
| Total Project Budget | \$36,861,704 | \$36,861,704 | \$0 | \$0 | | |
| % of Total Project Budget Committed | 0.00% | | | | | |
| % of Total Commitments Expended | 0.00% | | | | | |
| % of Total Project Budget Expended | 0.00% | | | | | |

6.5 Phase 4**Frisco Campus (Existing Repurpose)**

| Budget Group | Original Budget | Current Budget | Commitments | Expenditures | % of Budget Committed | % of Commitment Expended |
|-------------------------------------|--------------------|--------------------|-------------|--------------|-----------------------|--------------------------|
| Total Project Budget | \$7,321,091 | \$7,321,091 | \$0 | \$0 | | |
| % of Total Project Budget Committed | 0.00% | | | | | |
| % of Total Commitments Expended | 0.00% | | | | | |
| % of Total Project Budget Expended | 0.00% | | | | | |

McKinney Campus (Existing Repurpose)

| Budget Group | Original Budget | Current Budget | Commitments | Expenditures | % of Budget Committed | % of Commitment Expended |
|-------------------------------------|--------------------|--------------------|-------------|--------------|-----------------------|--------------------------|
| Total Project Budget | \$9,151,364 | \$9,151,364 | \$0 | \$0 | | |
| % of Total Project Budget Committed | 0.00% | | | | | |
| % of Total Commitments Expended | 0.00% | | | | | |
| % of Total Project Budget Expended | 0.00% | | | | | |

McKinney Campus (Traffic / Wayfinding)

| Budget Group | Original Budget | Current Budget | Commitments | Expenditures | % of Budget Committed | % of Commitment Expended |
|-------------------------------------|--------------------|--------------------|------------------|--------------|-----------------------|--------------------------|
| Total Project Budget | \$7,826,795 | \$7,826,795 | \$370,000 | \$0 | | |
| % of Total Project Budget Committed | 4.73% | | | | | |
| % of Total Commitments Expended | 0.00% | | | | | |
| % of Total Project Budget Expended | 0.00% | | | | | |

Frisco Campus (Wayfinding)

| Budget Group | Original Budget | Current Budget | Commitments | Expenditures | % of Budget Committed | % of Commitment Expended |
|-------------------------------------|--------------------|--------------------|-------------|--------------|-----------------------|--------------------------|
| Total Project Budget | \$2,546,293 | \$2,546,293 | \$0 | \$0 | | |
| % of Total Project Budget Committed | 0.00% | | | | | |
| % of Total Commitments Expended | 0.00% | | | | | |
| % of Total Project Budget Expended | 0.00% | | | | | |

Plano Campus (Wayfinding)

| Budget Group | Original Budget | Current Budget | Commitments | Expenditures | % of Budget Committed | % of Commitment Expended |
|-------------------------------------|--------------------|--------------------|-------------|--------------|-----------------------|--------------------------|
| Total Project Budget | \$5,092,585 | \$5,092,585 | \$0 | \$0 | | |
| % of Total Project Budget Committed | 0.00% | | | | | |
| % of Total Commitments Expended | 0.00% | | | | | |
| % of Total Project Budget Expended | 0.00% | | | | | |

6.6 Phase A

Public Safety Training Center

| Budget Group | Current Budget | Commitments | Expenditures | % of Budget Committed | % of Commitment Expended |
|-----------------------------|---------------------|---------------------|---------------------|-----------------------|--------------------------|
| Construction Costs | \$29,233,485 | \$29,233,485 | \$29,233,485 | 100% | 100% |
| Total Project Budget | \$29,233,485 | \$29,233,485 | \$29,233,485 | | |

* This project was not managed by AECOM. However, it is included in the report to make a complete report of Bond costs.

6.7 Building Fund Reimbursement

Program Level

| Budget Group | Original Budget | Current Budget | Commitments | Expenditures | % of Budget Committed | % of Commitment Expended |
|-----------------------------|---------------------|--------------------|-------------|--------------|-----------------------|--------------------------|
| Building Fund Reimbursement | \$51,150,000 | \$0 | \$0 | \$0 | 0% | 0% |
| Program Contingency | \$0 | \$2,772,689 | \$0 | \$0 | 0% | 0% |
| Total Project Budget | \$51,150,000 | \$2,772,689 | \$0 | \$0 | | |

* Building Fund Reimbursements for Wylie Campus land, Technical Campus land, and Public Safety Training Center construction costs were completed in May '18. Budgets, Commitments and Expenditures for these costs are reflected in each project.

7. Completed Items

7.1 General Program

- AECOM conducted coordination meetings with the Executive Committee on July 9th, 16th, 23rd & 30th
- Collin College, AECOM & Kimley-Horn met on July 31st to discuss logistics for the parking and traffic study that Kimley-Horn will be completing

7.2 Procurement

- RFP 4168 (Package 1 & 2 CM's) – Step 2 evaluation was completed and the recommended firms were notified on July 9th
- RFP 4169 (Package 3 CM) – Step 2 shortlist interviews were conducted on July 10th and Step 2 pricing was received on July 12th
- RFP 4169 (Package 3 CM) – Step 2 evaluation was completed and the recommended firm was notified on July 17th
- RFQ 4141 (Material Testing) debriefing was conducted with Intertek-PSI on July 18th
- AECOM and Collin College conducted a Program Procurement review meeting on July 18th
- RFQ 4159 & 4160 (A/E Services) debriefing was conducted with Moody Nolan on July 25th
- Collin College and AECOM met with FF&E vendors on July 25th to review the FF&E procurement logistics and timelines for the Wylie Campus and Technical Campus
- Collin College issued a formal Notice to Proceed for Architectural Services to Perkins+Will, Inc. for the IT Center of Excellence on July 30th
- Collin College issued a formal Notice to Proceed for Architectural Services to Beck Architecture, LLC for the Celina Campus and Farmersville Campus on July 30th

7.3 Design

- Collin College, AECOM, Page Southerland Page, Inc. and Skanska USA Building, Inc. conducted the Wylie Campus Weekly Project Meetings on July 17th & 31st
- Collin College, AECOM, Perkins+Will, Inc. and McCarthy Building Companies, Inc. conducted the Technical Campus Weekly Project Meetings on July 17th & 31st

- Collin College, AECOM, and Page Southerland Page, Inc. met on July 11th to review the landscape plan for the Wylie Campus
- Collin College, AECOM, Page Southerland Page, Inc. and Skanska USA Building, Inc. met with the City of Wylie on July 19th to review traffic mitigation requirements for the Wylie Campus, which release the City review of the documents
- Collin College and AECOM met with Hillwood Development (adjacent property owners to the Celina Campus) on July 23rd to review site logistics and discuss timelines for each project
- Page Southerland Page, Inc. conducted an interior areas design review session with AECOM and Collin College for the Wylie Campus on July 31st

7.4 Pre-Construction

- AECOM, Page Southerland Page, Inc. and Skanska USA Building, Inc. conducted weekly design review meetings for the Wylie Campus on July 11th, 24th & 31st
- Skanska USA Building, Inc. received GMP bids for the Wylie Campus on July 19th and began evaluating the bids that were received
- McCarthy Building Companies, Inc., Walker Electrical, AECOM & CoServe met on July 19th to review the temporary power plan for the Technical Campus
- Collin College, McCarthy Building Companies, Inc. & AECOM met at the Technical Campus site on July 26th to discuss logistics for the ground breaking ceremony
- Skanska USA Building, Inc. hosted a Wylie Campus Pre-Bid meeting on July 10th at the McKinney Campus

7.5 Construction

- No Construction Items were completed in July

7.6 Acceptance and Close-Out

- No Acceptance and Close-Out Phase Items were completed in July

8. Pending Items

8.1 General Program

- No General Program activities are pending at this time

8.2 Procurement

- Issuance of a Notice to Proceed to McCarthy Companies, Inc. for the Technical Campus
- Completion of the Construction Manager Procurements for RFP's 4168 (Package 1 & 2) & 4169 (Package 3), including Board approval of the recommended firms

8.3 Design

- Design Kick-Off meetings for the Phase 2 projects
- Interior concept design completions for the Wylie Campus and Technical Campus
- Pre-programming for the Phase 2 projects

8.4 Pre-Construction

- Submission of a GMP from Skanska USA Building, Inc. for the Wylie Campus

8.5 Construction

- No Construction activities are underway at this time

8.6 Acceptance and Close-Out

- No Acceptance and Close-Out activities are underway at this time

Appendix A – Schedule Milestone Definitions

BOT Approval of Program Manager – Establishes that a project is Board of Trustees approved and the Program Manager shall begin efforts to complete the project.

BOT Approval of A/E Procurement Method – Approval by the Board of Trustees of the methods used to procure the Architect.

BOT Approval of Construction Delivery Method – Approval by the Board of Trustees of the construction delivery method. Typically Construction Manager-at-Risk or Competitive Sealed Proposal.

BOT Approval of Recommended Firms – Acceptance of firm recommendations by the Board of Trustees.

Architect Mobilized – Completion of negotiations, execution of contracts, and issuance of Notice to Proceed.

Schematic Design Submittal – Initial design schemes that seek to define the general scope and conceptual design of the project including scale and relationships between building components.

Design Development Submittal – Site Plans, Elevations & Floorplans that define and describe all important aspects of the project.

Construction Document Submittal – Detailed specifications, details, illustrations, and instructions on all aspects of the facility. Used to obtain project bids and to construct the facility.

BOT Approval of GMP (Site) – Board of Trustees approval of the Guaranteed Maximum Price to complete the site work.

Contractor Mobilized – Notice to Proceed issued for the Site Work. Contractor on site and ready to start.

BOT Approval of GMP (Facility) – Board of Trustees approval of the Guaranteed Maximum Price to complete the facility work.

Foundations Complete – Mass grading & piers complete, project. There after the project is less affected by rain, mud and subterranean conditions.

Building Top Out – All major structural components are in place (including the highest component) for the facility. Project less susceptible to material shortages or delays.

Building Dry-In – Roofing and windows are complete and the building is water resistant. The project overall is less susceptible to weather as most of the work is conducted indoors.

Building Energized – The building has power. This is an indication that utilities are in place, significant electrical work is complete, and many significant city inspections have been passed.

Building Climatized – The HVAC system is functional. Weather sensitive materials can be installed.

Temporary CO – The city has agreed that the building is significantly constructed in accordance with local codes and is occupiable. There may be outstanding landscaping requirements.

Final CO – The city has agreed that the building is constructed in accordance with local codes and is occupiable. There may be outstanding landscaping requirements

Substantial Completion – All materials are in place, all systems are functional, and the owner can use the building for its intended purpose with only minor punch-list items remaining. Warranties will commence.

Final Completion – All punchlist items are complete. The Contractor is complete.

Student Occupancy – Success!