



GENESEE COUNTY DRAIN COMMISSIONER'S OFFICE

-DIVISION OF
SURFACE WATER MANAGEMENT

JEFFREY WRIGHT
COMMISSIONER

G-4608 BEECHER ROAD, FLINT, MI 48532

PHONE (810) 732-1590 FAX (810) 732-1474

October 16, 2024

Reference: Pine Run, Foxglove Branch Drain #1611
Correspondence From: Mathew White

Joeseeph Rizk, Supervisor
Charter Township of Vienna
3400 W. Vienna Rd
Clio, MI 48420

Dear Mr. Rizk,

This office had received a request in 2022 regarding the Pine Run, Foxglove Branch Drain #1611 from you, asking if we would be cleaning out the county drain/detention basin as the roadside ditches were scheduled to be cleaned out that year by the Genesee County Road Commission. It was determined to be too expensive to clean the detention basin at this time, but the county ditch line could be addressed.

This project has been bid with an estimated cost of \$15,000.00. The estimated cost to repair the affected portion of the drain will exceed the statutory limits, \$5,000.00 as defined by Public Act 40 of 1956, as amended, *The Drain Code*. To perform work in excess of the statutory limits, *The Drain Code* requires that each of the township(s) and municipality(ies) affected for more than 20% of the costs pass a Resolution to Exceed Maintenance authorizing the Drain Commissioner to exceed the statutory limits. In this case, Charter Township of Vienna is the township affected.

The cost of the work would be assessed to maintenance limits over three (3) years, including this fiscal year. The Vienna Township portion is 25% of the cost at a maximum of \$1,250.00 per year.

Attached is a copy of the Resolution to exceed maintenance for consideration by your township board, a copy of the map of the area to be maintained, and a copy of the low bid.

If you have questions or comments, please feel free to contact our office. Thank you.

Sincerely,

A handwritten signature in black ink that reads "Mathew White".

Mathew White
Engineering Assistant



GENESEE COUNTY DRAIN COMMISSIONER'S OFFICE

-DIVISION OF
SURFACE WATER MANAGEMENT

JEFFREY WRIGHT
COMMISSIONER

G-4608 BEECHER ROAD, FLINT, MI 48532
PHONE (810) 732-1590 FAX (810) 732-1474

June 5, 2024

Reference: Pine Run, Foxglove Branch Drain #1611
Correspondence From: Mathew White

Vincke Excavating
Kurt Vinke
6405 Gary Rd.
Chesaning, MI 48616

Dear Sirs:

Please accept this invitation to submit a proposal on the following work as Maintenance for amounts under the statutory limits as described in Public Act 40 of 1956:

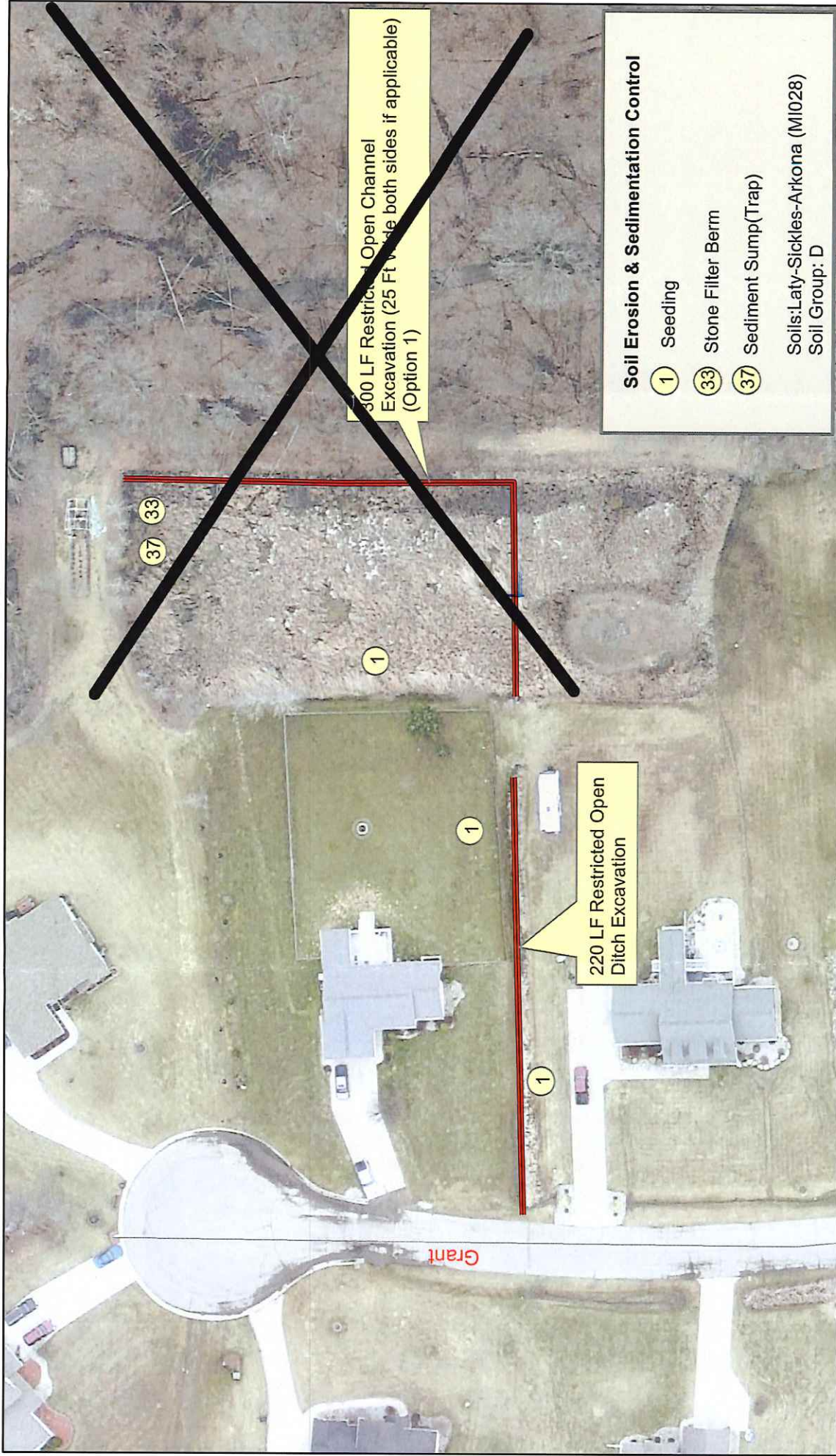
Project: Pine Run, Foxglove Branch Drain #1611 Open ditch excavation/Pond Cleanout in Section 07 of Vienna Township T9N- R6E in Genesee County, Michigan beginning at the road side ditch on PID18-07-552-13; thence east & northeast 470 LF ending at a enclosed tile on PID 18-07-552-015

ITEM NO.	DESCRIPTION	ESTIMATED QUANTITY	UNIT PRICE	AMOUNT
1.	Mobilization	1 LSUM	2,000.00	2,000.00
2.	Restricted Open Ditch Excavation	220 LF	20.00	4,400.00
3.	Class 1 Restoration	220 LF	10.00	2,200.00
4.	Soil Erosion and Sedimentation Control	1 LSUM	1,500.00	1,500.00
5.	Selective Clearing & Grubbing	205 LF	25.00	5,125.00
Total Items 1-5				15,225.00
6A	Open Channel Excavation in Detention Basin (Option1)	300 LF	90.00	27,000.00
7A	Class 1 Restoration for Open Channel	300 LF	15.00	4,500.00
Total Items 1-5+6&7A				46,725.00
6B	Detention Basin Perimeter Cleanout (Option2)	510LF	90.00	45,900.00
7B	Class 1 Restoration Open Channel Perimeter	510 LF	15.00	7,650.00
Total Items 1-5+6&7B				68,775.00

Contractor's Signature: Kurt Vincke Date: 06/20/24

**Pine Run, Foxglove Br, #1611 Maintenance
Vienna Township, Section #7
Bid Option 1**

1 inch = 67 feet



Soil Erosion and Sedimentation Control measures shall be in place prior to performing any work. The contractor shall operate, monitor and maintain SESC measures until the project is stabilized. Soil Erosion and Sedimentation Control measures shall meet the requirements of this plan, Genesee County Drain Commissioner-Surface Water Management Division's Soil Erosion and Sedimentation Control Authorized Public Agency Procedure Manual and Part 91, Soil Erosion and Sedimentation Control, of the Natural Resources and Environmental Protection Act, 1994 PA 451, as amended. GCDC-SW M APA manual is available on-line and at our office. GCDC-SW M will inspect and enforce SESC requirements.