

Sherburne & Northern Wright Special Education Cooperative

Becker Public Schools Board of Education



May 2, 2022

Agenda

01

Who We Are

What is SNWSEC?

02

What We Do

How does SNWSEC support
Monticello?

03

Funding

How is this work made
possible?

04

Next Steps

Where are we going next?



01

Who We Are



Sherburne & Northern Wright Special Education Cooperative

Minnesota School District 6090-52

SNWSEC - July 1, 2021

Becker



Big Lake



Monticello

Key SNWSEC Numbers

9,869

Total number of students in our member districts - Becker, Big Lake, Monticello, & SNWSEC Programs

1,864

Number of students who receive special education services

17.3%

Percent of students in our member districts who receive special education services

14.3%

Percent of students statewide who receive special education services

Key Becker Numbers

2,833

Total number of students in
Becker

497

Number of students who
receive special education
services

17.5%

Percent of Becker students
who receive special education
services

Why be part of a cooperative?

- Financial Savings
- Legally Required Special Education Services/Licensure
- Professional Learning Opportunities
- Access to Highly Specialized Support & Expertise
- Behind the Scenes Services
- Access to Student Programs
- In the future...Possibly More than Just Special Education!

SNWSEC Governance

Superintendent Advisory Council

Superintendents from
each member district

Meet monthly

Review SNWSEC matters
before presentation to
Governing Board

Governing Board

One School Board
member from each
district

Meet every other month

Provide approval for
SNWSEC budgets and
policies



02

What We Do

Special Education

Finance

Staffing

Advocacy

Dispute

Evals &
IEPS

Instruction

Referral &
MTSS

Legal Basis for Special Education



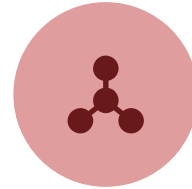
Federal Regulations

Federal regulations establish minimum requirements



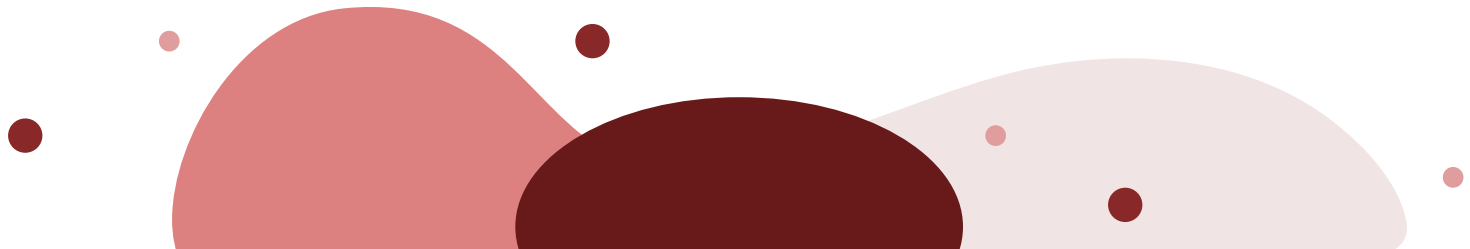
State Statutes

MDE interprets statute and issues guidance



Case Law

Helps clarify the federal and state requirements



SNWSEC

Services

- Special Education Administration
- School Psychologists
- Related Services (DHH, VI, PI, ASL, OT, PT)
- Assistive Technology
- Early Childhood Special Education Evaluations
- Special Education Reporting

Programs

- Birth-3 Early Intervention - Home Visits
- K-12 Center-based DCD/ASD Programs
- Setting IV Programs (DCD/ASD, EBD)
- 18-21 Transition Programs
 - *Connections North*
 - *Connections South*
 - *C5*



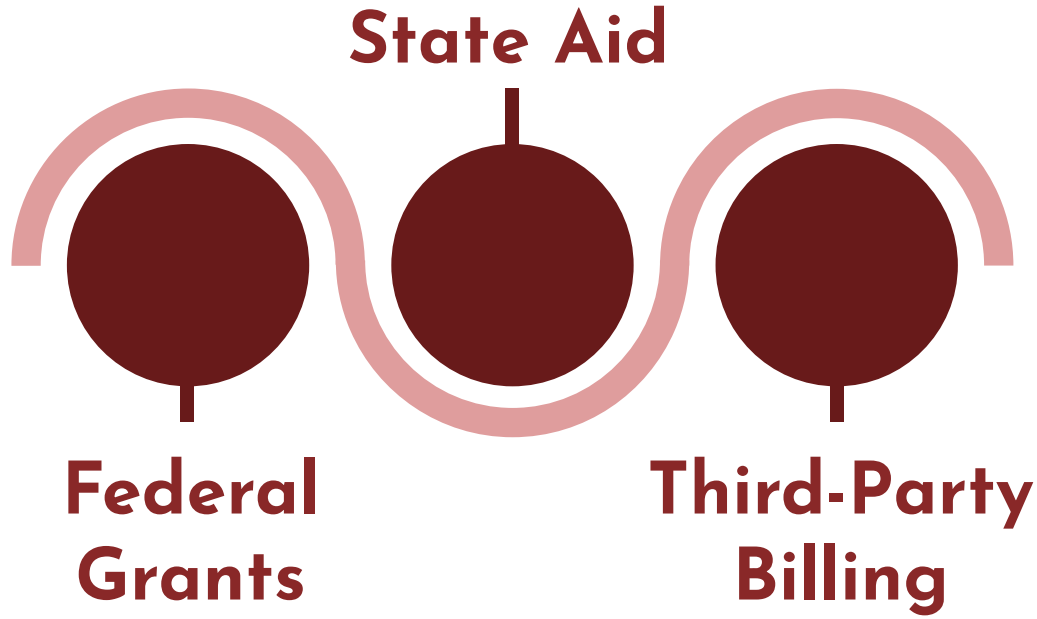
03

Special Education Funding

How SNWSEC is funded

- **Federal grants**
 - *Used to cover the costs of eligible special education expenditures*
 - *Remaining funds are granted back to member districts*
- **State special education aid**
 - *Complex system of calculations primarily based on partial reimbursement of special education expenditures not covered by other sources of aid*
- **Compensatory aid**
- **Third Party Billing**
 - *SNWSEC will bill Medical Assistance for eligible health services*
- **Access fees**
 - *Fee to districts of non-member district students to offset costs*
- **Payments from Member Districts**
 - *Costs not covered by other sources of revenue are billed back to member districts*

Becker Special Education Funding



Cross Subsidy: Costs not covered by special education aid is covered by the general fund



04

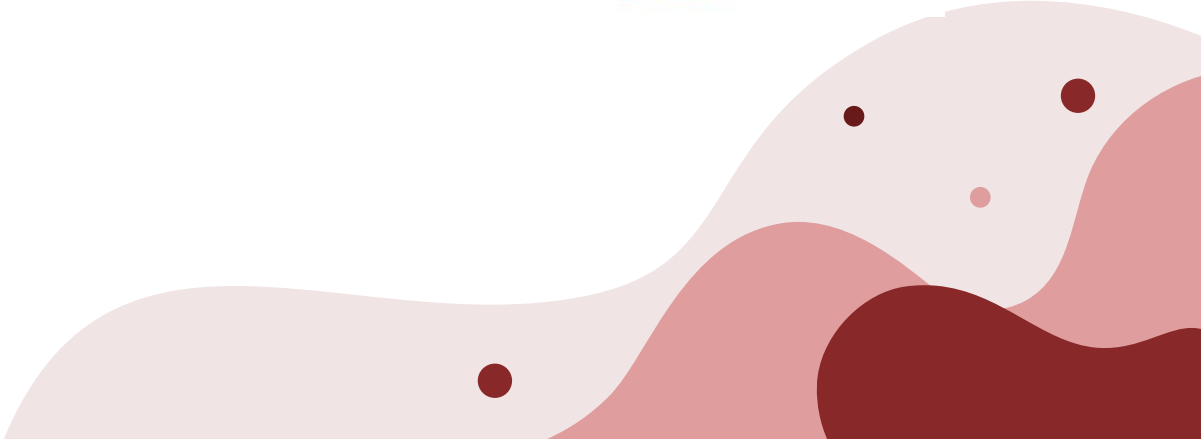
**Where We Are
Going...**

Updated Logo & Branding



Sherburne & Northern Wright
Special Education Cooperative

Becker | Big Lake | Monticello





Grant Writer

Will support member districts by researching and applying for individual or collective competitive grants for member districts

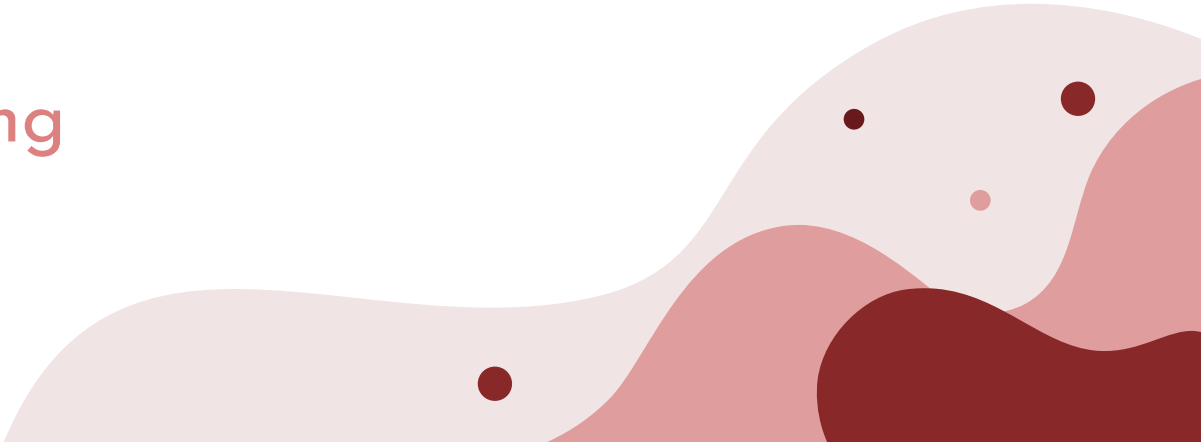
First general education collaboration through the cooperative structure

Student
Programming &
Achievement

Organizational
Supports & Services

Strategic Planning

Safe & Welcoming
Environments





Thanks!

Heidi Nistler
Director of Special Education
Sherburne & Northern Wright Special Education Cooperative
Becker - Big Lake - Monticello
heidi.nistler@monticello.k12.mn.us
763-272-2051