

# Quarterly Partnership Review



# WHAT'S COOKING



**Linda Mora**

**General Manager, SFE**

**Office:** (325) 643-5644

**Email:** linda.mora@sfellc.org



**ANA TARPLEY**

**Senior Director of Operations, SFE**

**Office:** (512) 269-3765

**Email:** ana.tarpley@sfellc.org

**Savanah Rios**

**Assistant General Manager, SFE**

**Office:** (325) 643-5644

**Email:** savanah.rios@sfellc.org



**Bobby Green**

**Director of Area Operations, SFE**

**Office:** (940) 531-1164

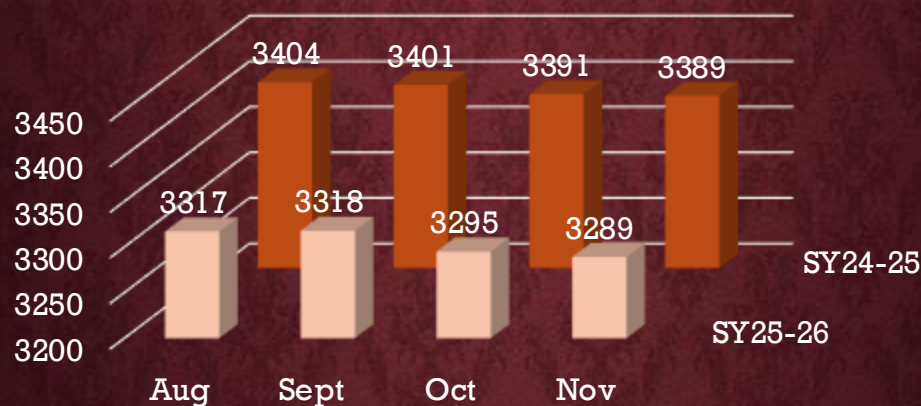
**Email:** bobby.green@sfellc.org



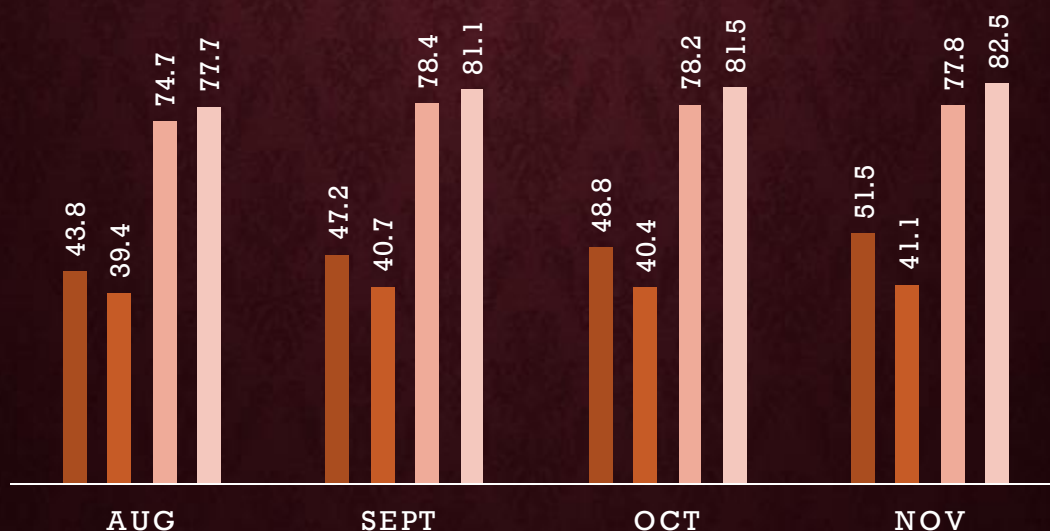
# customized programs

Participation has dropped some this year due to the drop in enrollment. Some class changes at the High School has also affected the meals. After renovations, we hope to improve meal counts the second semester, with some small changes.

## Enrollment

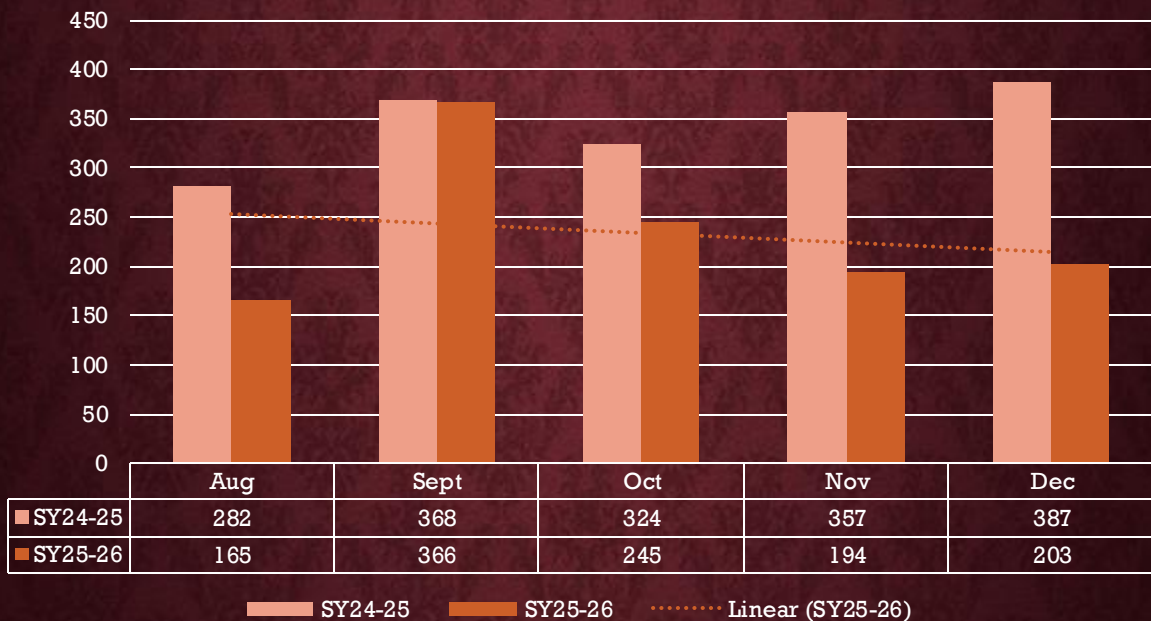


## PERCENTAGE OF PARTICIPATION PER ENROLLMENT



# innovation

Last year, we were serving High School Athletic and Band. Due to schedule changes as well as construction in and around athletic facilities breakfast deliveries have been placed on hold until further notice. With this changed High School Breakfasts has dropped, we have not been able to recover from the loss of meals. However, we are thinking outside of the box to raise participation, plans include grab n go at the main entrance as well as adding breakfast ala carte items to include cold and hot coffee bar.



## FINANCES

### Commodities

BB/NOI  
DOD

- \$134,539
- \$30,199
- Total: \$164,738

Total  
Usage

- 57%
- 100% DoD

### District Revenue

Total  
\$1,407,401

Surplus  
\$389,001

customized  
programs

OUT WITH THE  
OLD!

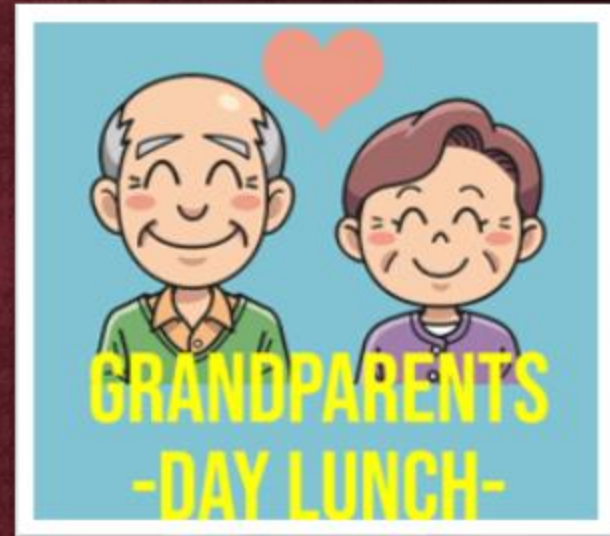


# innovation

## IN with the New Serving lines @ BHS!



# What's happening around BISD



# What's happening around BISD



# What's happening around BISD



# What's happening around BISD

