

UNITED INDEPENDENT SCHOOL DISTRICT AGENDA ACTION ITEM

TOPIC PROPOSED BOUNDARY CHANGE FOR 2010-2011

SUBMITTED BY: MIKE GARZA OF: EXECUTIVE DIRECTOR OF SUPPORT SERVICES

APPROVED FOR TRANSMITTAL TO SCHOOL BOARD: _____

DATE ASSIGNED FOR BOARD CONSIDERATION: August 18, 2010

RECOMMENDATION: It is recommended that the Board of Trustees approve the boundary change for the Dorel Apartment Complex effective 2010-2011 school years as presented for Cuellar Elementary and Killam Elementary.

RATIONALE: The boundary changes are being proposed to provide efficient use of district facilities. Existing attendance boundaries would create overcrowding at certain facilities while other facilities would be under-utilized.

BUDGETARY INFORMATION

N/A

BOARD POLICY REFERENCE AND COMPLIANCE

N/A

**Street from the Dorel Apartment Complex Area to be included
within the Cuellar Elementary Boundary**

(Street)

4412 to 4418 block of Maria Luisa Dr.

UNITED INDEPENDENT SCHOOL DISTRICT

THE PROPOSED ELEMENTARY SCHOOL ATTENDANCE BOUNDARY FOR 2010-2011

1. Cuellar Elementary School

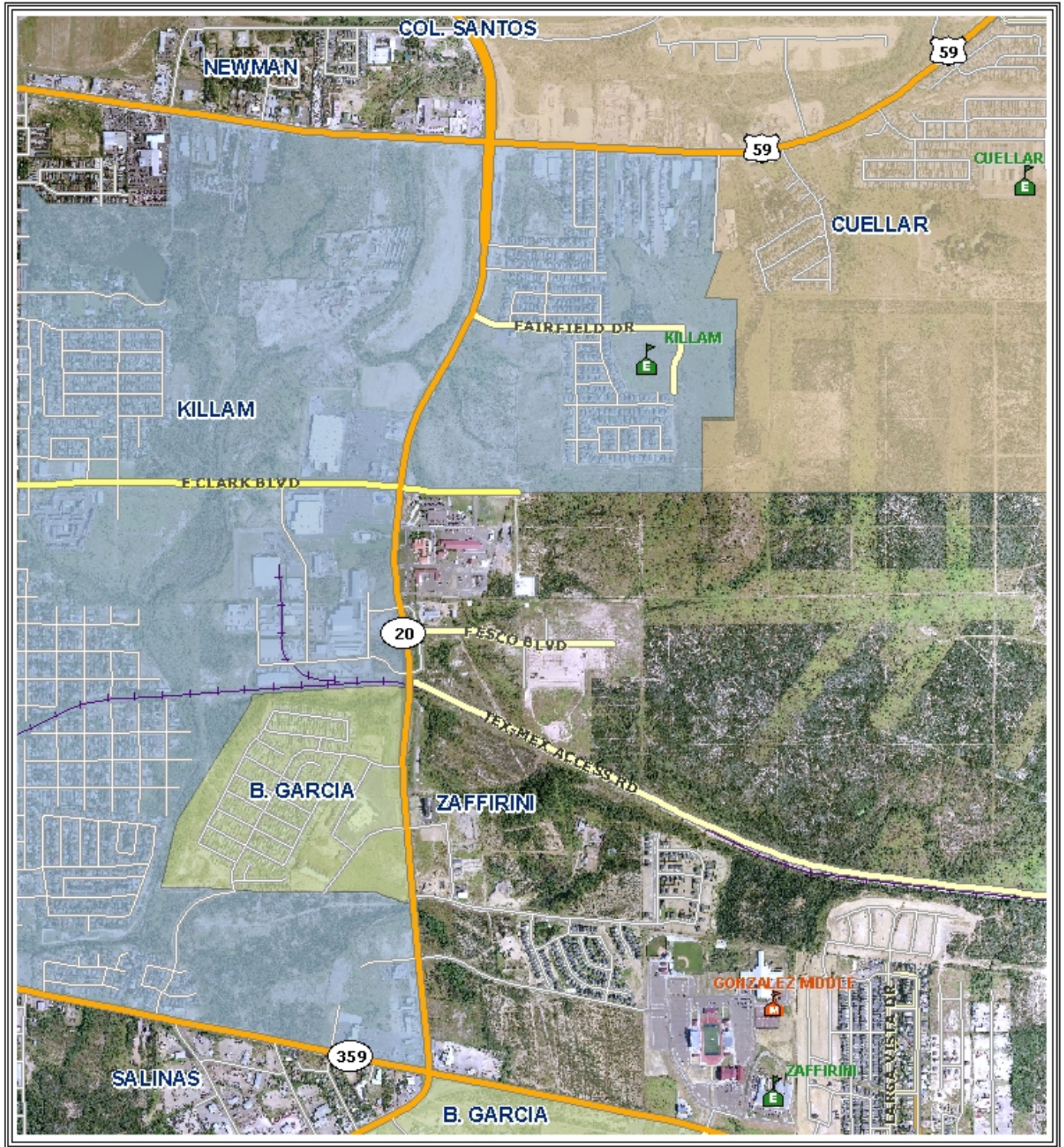
The boundary for Cuellar Elementary begins at the intersection of Loop 20 and Hwy 59. Includes all students residing outside Loop 20 and Hwy 59 except those residing in/and between Towne East and Ponderosa Subdivision, Heritage Park and San Jose Subdivision and all other east on Hwy 59. Additionally, it will include the Dorel Apartments (located on Maria Luisa Dr. & Bob Bullock)

2. Killam Elementary School

The boundary for Killam Elementary begins at the intersection of East Saunders St. (Hwy 59) and Casa Blanca Rd., moves east on E. Saunders to include the south areas of (Hwy 59) towards and around the Town East Subdivision and the Ponderosa Subdivision then east on Clark Blvd. to Bob Bullock Loop. The boundary continues south on Bob Bullock Loop including everything to the east of Bob Bullock Loop. (except the Cheyenne Subdivision and the Dorel Apartments on Maria Luisa Dr).

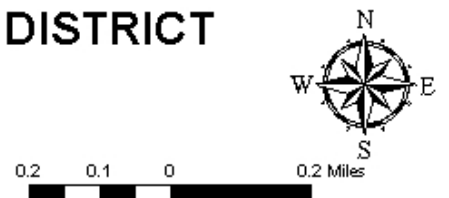
The boundary then moves west on Hwy 359 to Ejido, then north on Ejido, then east and around the New Heights Subdivision.

2009-2010 Current Elementary School Boundaries

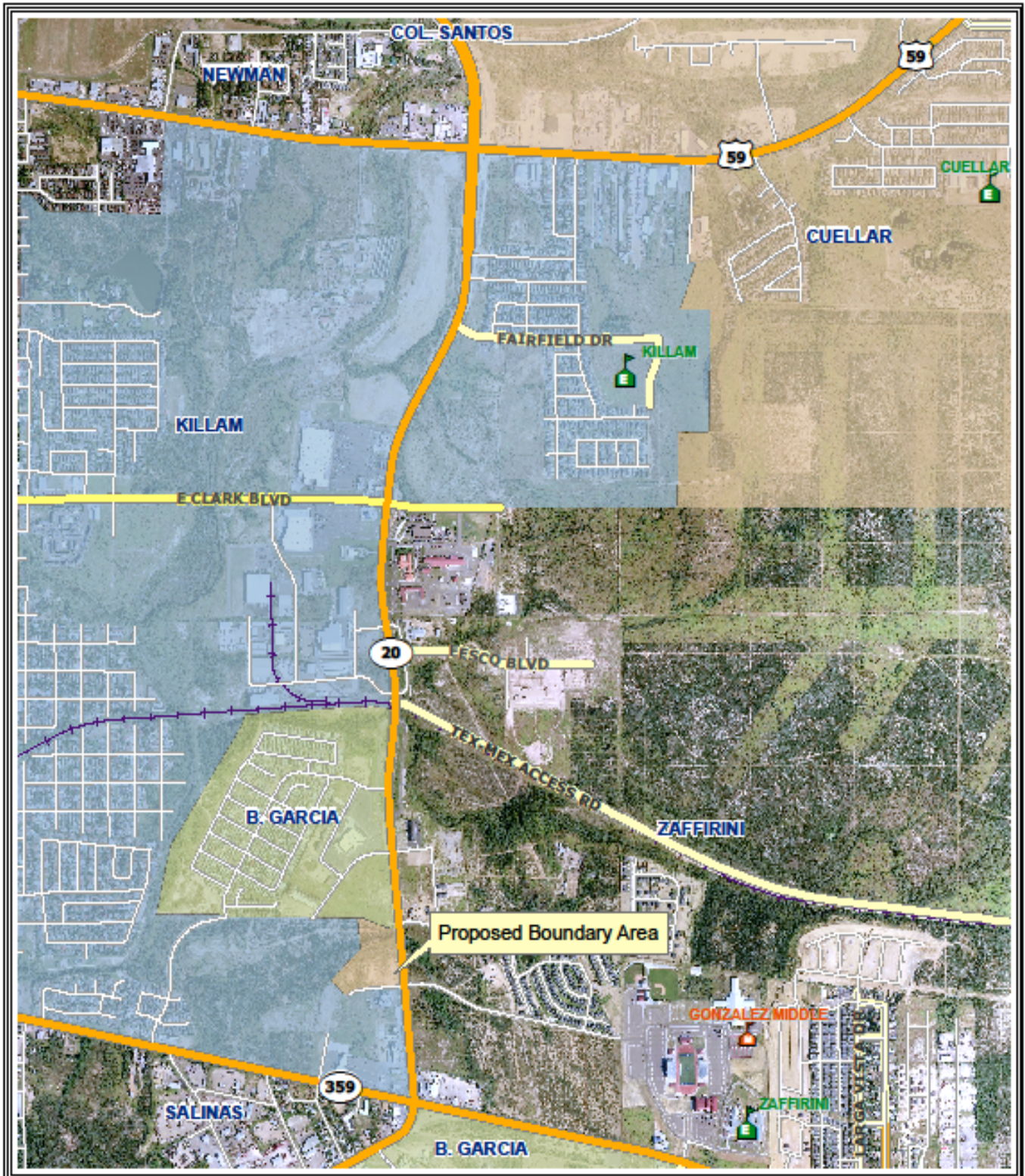


UNITED INDEPENDENT SCHOOL DISTRICT

This agency is not responsible for the misinterpretation of this map.
This map does not meet national map accuracy standards and
should not be used for engineering purposes.



2010-2011 Proposed Boundary Changes for Cuellar and Killam Elementary



UNITED INDEPENDENT SCHOOL DISTRICT

This agency is not responsible for the misinterpretation of this map.
This map does not meet national map accuracy standards and
should not be used for engineering purposes.

