



*Wharton County
Junior College*



Monthly Financial Reports

December 2022



Revenue & Expenditure Summary

	FISCAL 2023				FISCAL 2022			% OF PRIOR YR ACTUAL
	Current Month	Y-T-D ACTUAL	Budget	% of Budget	Y-T-D ACTUAL	Budget	% of Budget	
Fund 1000								
Revenues:								
State appropriations	\$ 883,999	\$ 4,001,261	\$ 9,305,255	43.00%	\$ 4,001,261	\$ 9,305,255	43.00%	100%
Tuition and Fees	1,954,538	12,892,121	19,071,607	67.60%	12,989,653	19,874,485	65.36%	99%
Advalorem Taxes	2,719,691	3,220,972	8,756,525	36.78%	2,959,708	7,675,517	38.56%	109%
Mandatory Transfers	-	-	1,350,273	0.00%	-	327,215	0.00%	0%
Non-mandatory Transfers	-	-	1,835,483	0.00%	-	2,632,362	0.00%	0%
Other Revenues	26,353	4,203	439,501	0.96%	(11,052)	439,901	-2.51%	-38%
Total Revenues	5,584,581	20,118,557	40,758,644	49.36%	19,939,570	40,254,735	49.53%	101%
Expenditures:								
Salaries	1,788,139	6,846,543	22,927,561	29.86%	7,173,592	23,212,016	30.90%	95%
Employee Benefits	465,389	1,459,143	6,045,646	24.14%	1,524,408	5,974,322	25.52%	96%
Capital Expenditures	26,136	72,291	311,096	-	-	16,626	-	0%
Mandatory Transfers	-	184,509	367,800	50.17%	183,344	367,800	49.85%	101%
Non-mandatory Transfers	-	-	-	-	-	-	-	0%
Other Expenditures	594,921	3,302,271	11,106,541	29.73%	3,273,427	10,683,971	30.64%	101%
Total expenditures	2,874,585	11,864,757	40,758,644	29.11%	12,154,771	40,254,735	30.19%	98%
Net increase/ (decrease) in net assets	\$ 2,709,996	\$ 8,253,800			\$ 7,784,799			
Less Outstanding encumbrances		(1,541,290)			(1,370,248)			
Net increase less encumbrances		\$ 6,712,510			\$ 6,414,551			

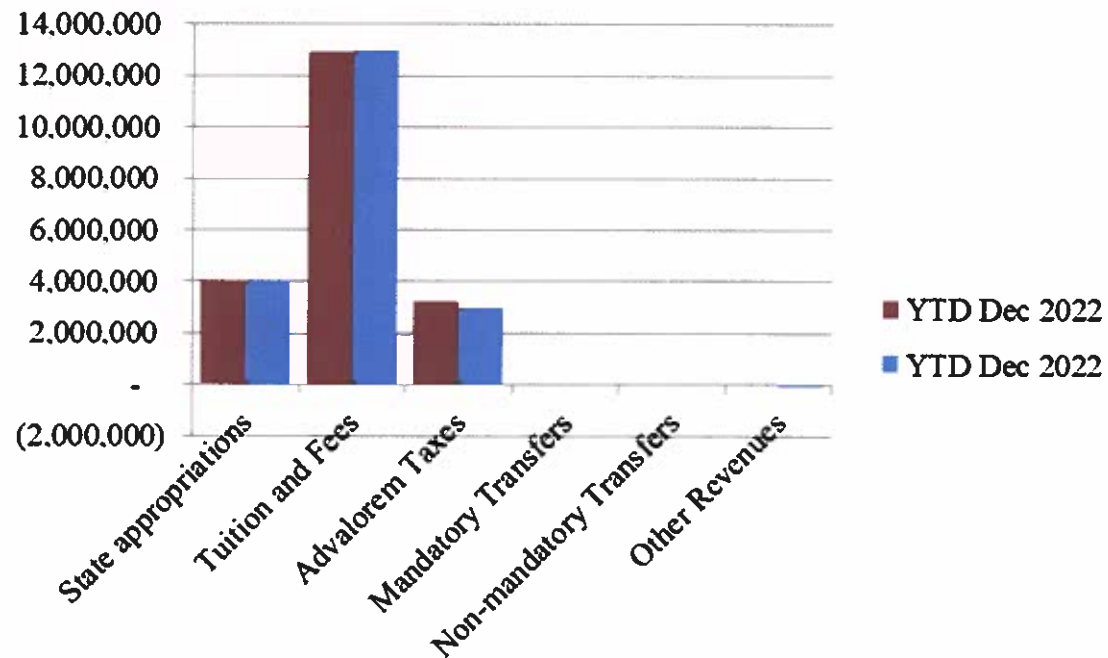
* Note: Net student receivables in the amount of \$ 3,950,092.78 are currently outstanding. Tuition and fees are subject to collection in future periods.



Wharton County
Junior College



Year to Date Revenues

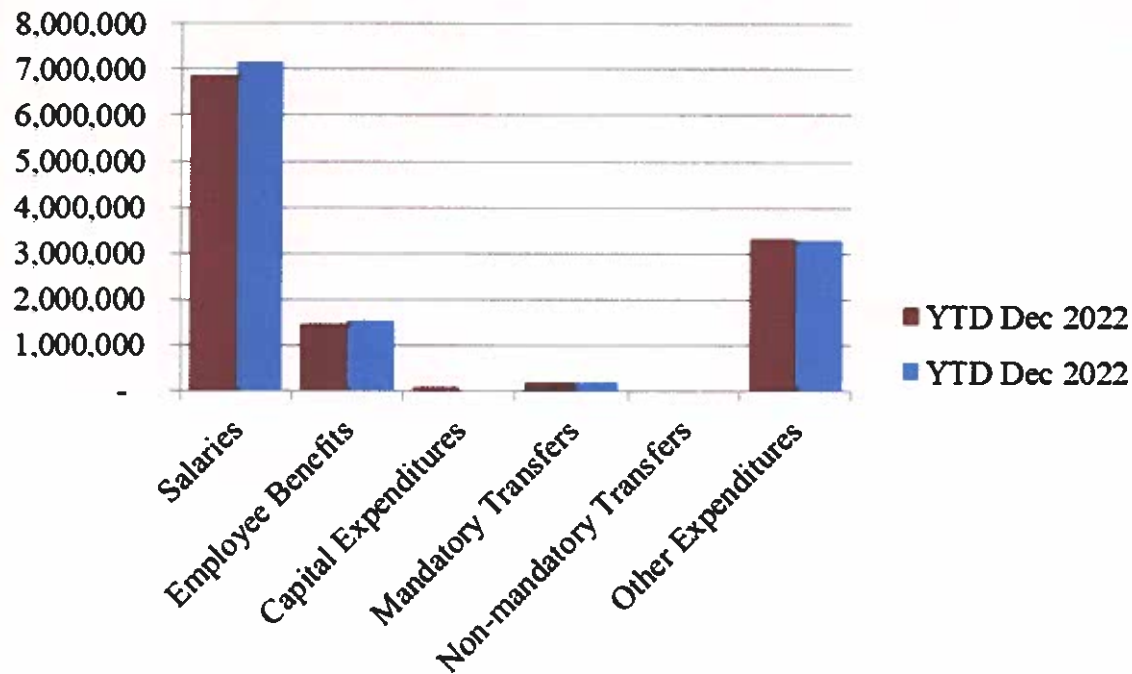




Wharton County
Junior College



Year to Date Expenses

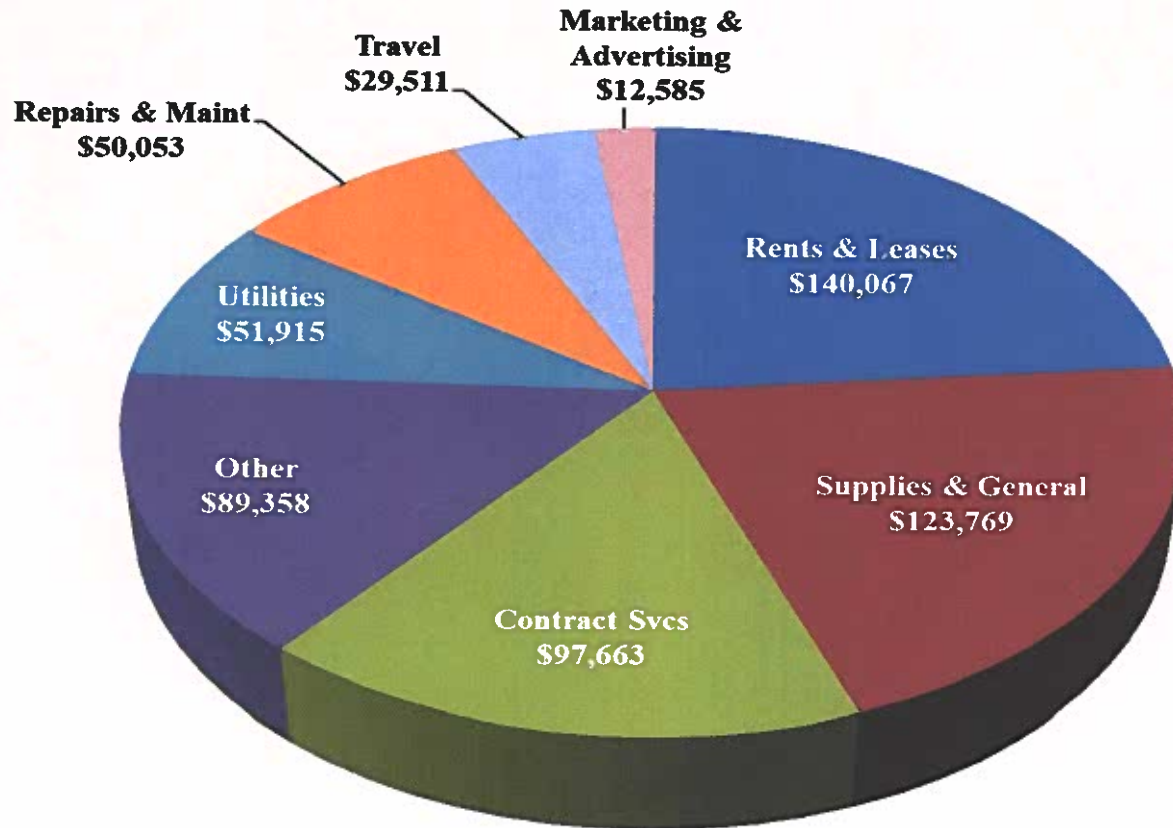




Wharton County
Junior College



Other Expenses for December





Analysis of Student Receivable Outstanding As of December 31, 2022

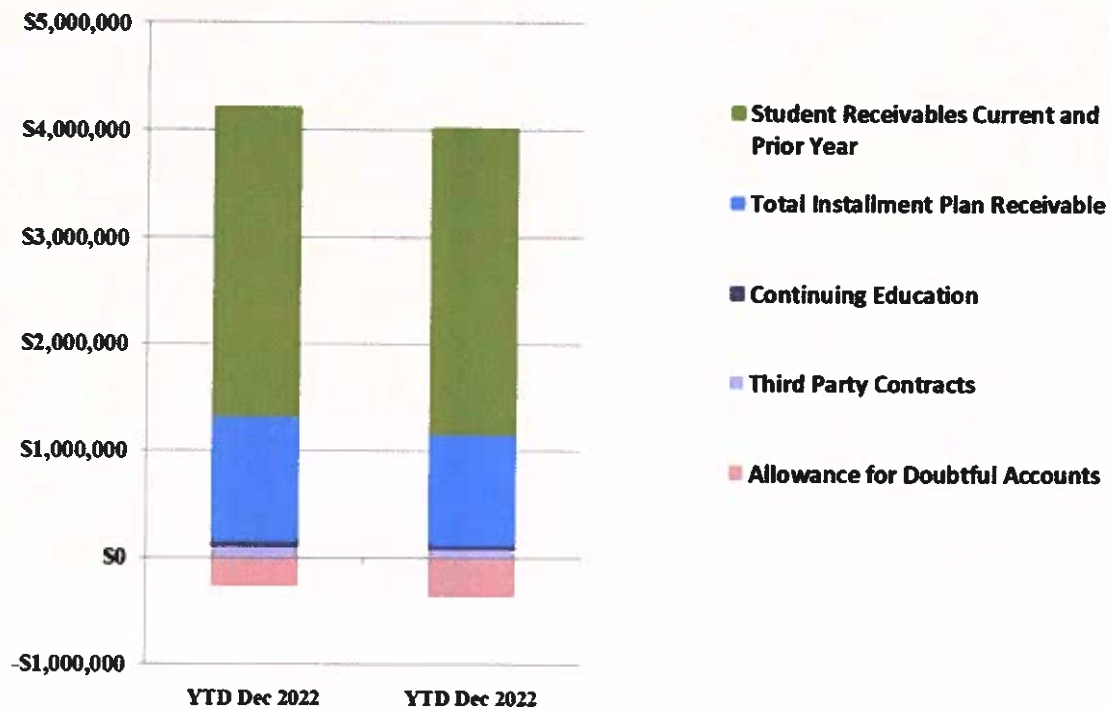
	2023	2022
Student Receivables Current and Prior Yr.	\$ 2,900,974.94	\$ 2,880,239.25
Installment Plan Receivable Due Fall Semester	\$ 145,664.13	\$ 64,966.12
Installment Plan Receivable Due Spring Semester	947,051.18	803,515.25
Installment Plan Receivable Summer I & II	0.00	0.00
Installment Plan Receivable Prior Years	81,154.98	181,061.80
Total Installment Plan Receivable	\$ 1,173,870.29	\$ 1,049,543.17
Third Party Contracts Receivable	\$ 96,803.50	\$ 77,974.40
Continuing Education Receivable	49,603.00	20,811.00
Allowance for Doubtful Accounts	(271,158.95)	(360,638.51)
Net Accounts Receivable	\$ 3,950,092.78	\$ 3,667,929.31



Wharton County
Junior College



AR by Category



COMBINED BALANCE SHEET

(Funds included: GOVERNMENTAL FUND TYPES)

Governmental Fund Types

	Auxiliary Enterprise	Current Unrestricted	Restricted Funds	Current Year 2023	Prior Year 2022
ASSETS and OTHER DEBITS:					
ASSETS:					
Cash	147,824	3,615,598	1,219,779	4,983,202	6,228,797
Cash Investments	768,491	15,958,229	806,405	17,533,125	16,139,261
Accounts Receivable	291,713	3,971,523	5,681	4,268,917	3,940,808
Taxes Receivable		1,503,603	--	1,503,603	1,595,488
Local, St & Fed Agency Receivable		--	433,045	433,045	1,394,858
Deposits		--	--	--	4,892
Due From Other Funds		600,000	4,783	604,783	318,276
Prepaid Expense		--	--	--	39,679
Property, Plant & Equipment		--	--	--	--
Deferred Outflows		9,340,694	--	9,340,694	10,285,070
TOTAL ASSETS AND OTHER DEBITS:	1,208,028	34,989,647	2,469,692	38,667,368	39,947,129
Liabilities, equity and other credits					
LIABILITIES:					
Accounts Payable		124,169	4,463	128,632	77,909
Employee Benefits Payable	615	81,039	--	81,653	121,571
Payroll Taxes Payable		194	--	194	-1,678
Accrued Liabilities		--	--	--	--
Deferred Revenue	2,366	--	502,385	504,751	728,708
Long Term Debt		--	--	--	--
Net Pension Liability		4,103,835	--	4,103,835	9,228,835
Net OPEB Liability		32,567,646	--	32,567,646	32,567,646
Lease Liab - Long Term		--	--	--	--
Deposits Payable	69,152	11,878	--	81,030	74,263
Due To Other Funds		4,783	600,000	604,783	318,276
Scholarships-Designated Donations		--	62,708	62,708	76,642
Scholarships-Non-designated		--	1,013,220	1,013,220	771,527
Donatio					
Deferred Inflows		9,710,668	--	9,710,668	6,185,814
TOTAL LIABILITIES:	72,133	46,604,212	2,182,775	48,859,120	50,149,513
EQUITY AND OTHER CREDITS:					
Control Accounts		--	--	--	--
Fund Balances		--	--	--	--
Prior Year Fund Balance		-19,313,888	--	-19,313,888	-19,417,360
Endowment Fund-Original		--	--	--	--
Endowment Fund-Income		--	--	--	--

Governmental Fund Types

	Auxiliary Enterprise	Current Unrestricted	Restricted Funds	Current Year 2023	Prior Year 2022
EQUITY AND OTHER CREDITS:					
FB Professional Development		--	--		
FB Salary Equity		--	--		
FB Capital Equipment		--	--		
FB Investment Gain And Loss		--	--		
Fund Balance Receivables		--	--		
Reserved-Undesignated		--	--		
FBTC Operating Fund Balance		--	--		
Plant Fund Balance		--	--		
Bond Fund Balance		--	--		
Scholarship		--	--		
Fund Balance-Rounding Diff		--	--		
Fund Balances:					
Reserve for Encumbrance	37,060	1,541,290	427,677	2,006,027	3,271,149
Fund Balance	1,098,835	6,158,033	-140,759	7,116,109	5,943,827
Reserve For Operations		--	--		
TOTAL EQUITY AND OTHER CREDITS:	1,135,895	-11,614,565	286,918	-10,191,752	-10,202,384
TOTAL LIABILITIES:	1,208,028	34,989,647	2,469,692	38,667,368	39,947,129
EQUITY AND OTHER CREDITS:					

Wharton County Junior College
 Combined Balance Sheet--All Fund Types and Account Groups
 31-DEC-2022
 (With comparative totals for 31-DEC-2021)
 (amounts expressed in dollars)

Proprietary Fund Types

	Agency Funds	Current Year 2023	Prior Year 2022
ASSETS and OTHER DEBITS:			
ASSETS:			
Cash	81,084	81,084	189,835
Cash Investments	161,558	161,558	59,122
Accounts Receivable	-	-	-
Taxes Receivable			
Local, St & Fed Agency Receivable			
Deposits			
Due From Other Funds			
Prepaid Expense			
Property, Plant & Equipment			
Deferred Outflows			
TOTAL ASSETS AND OTHER DEBITS:	242,643	242,643	248,957
Liabilities, equity and other credits			
LIABILITIES:			
Accounts Payable			
Employee Benefits Payable	-	-	-
Payroll Taxes Payable			
Accrued Liabilities			
Deferred Revenue			
Long Term Debt			
Net Pension Liability			
Net OPEB Liability			
Lease Liab - Long Term			
Deposits Payable	240,801	240,801	248,813
Due To Other Funds			
Scholarships-Designated Donations			
Scholarships-Non-designated			
Donatio			
Deferred Inflows			
TOTAL LIABILITIES:	240,801	240,801	248,813
EQUITY AND OTHER CREDITS:			
Control Accounts	1,841	1,841	144
Fund Balances			
Prior Year Fund Balance			
Endowment Fund-Original			
Endowment Fund-Income			

Proprietary Fund Types

	Agency Funds	Current Year 2023	Prior Year 2022
<hr/>			
EQUITY AND OTHER CREDITS:			
FB Professional Development			
FB Salary Equity			
FB Capital Equipment			
FB Investment Gain And Loss			
Fund Balance Receivables			
Reserved-Undesignated			
FBTC Operating Fund Balance			
Plant Fund Balance			
Bond Fund Balance			
Scholarship			
Fund Balance-Rounding Diff			
Fund Balances:			
Reserve for Encumbrance			
Fund Balance			
Reserve For Operations			
TOTAL EQUITY AND OTHER CREDITS:	1,841	1,841	144
TOTAL LIABILITIES:	242,643	242,643	248,957
EQUITY AND OTHER CREDITS:	=====		

Wharton County Junior College
 Combined Balance Sheet--All Fund Types and Account Groups
 31-DEC-2022
 (With comparative totals for 31-DEC-2021)
 (amounts expressed in dollars)

Fiduciary Fund Types

	Endowment Funds	Quasi Endowment Fund	Current Year 2023	Prior Year 2022
ASSETS and OTHER DEBITS:				
ASSETS:				
Cash	542,793	--	542,793	823,912
Cash Investments	12,389,746	--	12,389,746	13,092,231
Accounts Receivable	2,194	--	2,194	14,531
Taxes Receivable	--	--	--	--
Local, St & Fed Agency Receivable	--	--	--	--
Deposits	--	--	--	--
Due From Other Funds	--	--	--	--
Prepaid Expense	--	--	--	--
Property, Plant & Equipment	--	--	--	--
Deferred Outflows	--	--	--	--
TOTAL ASSETS AND OTHER DEBITS:	12,934,733		12,934,733	13,930,674
Liabilities, equity and other credits				
LIABILITIES:				
Accounts Payable	--	--	--	--
Employee Benefits Payable	--	--	--	--
Payroll Taxes Payable	--	--	--	--
Accrued Liabilities	--	--	--	--
Deferred Revenue	--	--	--	--
Long Term Debt	--	--	--	--
Net Pension Liability	--	--	--	--
Net OPEB Liability	--	--	--	--
Lease Liab - Long Term	--	--	--	--
Deposits Payable	--	--	--	--
Due To Other Funds	--	--	--	--
Scholarships-Designated Donations	--	--	--	--
Scholarships-Non-designated	--	--	--	--
Donatio	--	--	--	--
Deferred Inflows	--	--	--	--
TOTAL LIABILITIES:				
EQUITY AND OTHER CREDITS:				
Control Accounts	--	--	--	--
Fund Balances	--	--	--	--
Prior Year Fund Balance	--	--	--	--
Endowment Fund-Original	--	--	--	--
Endowment Fund-Income	--	--	--	--

Fiduciary Fund Types

	Endowment Funds	Quasi Endowment Fund	Current Year 2023	Prior Year 2022
EQUITY AND OTHER CREDITS:				
FB Professional Development		--		
FB Salary Equity		--		
FB Capital Equipment		--		
FB Investment Gain And Loss		--		
Fund Balance Receivables		--		
Reserved-Undesignated		--		
FBTC Operating Fund Balance		--		
Plant Fund Balance		--		
Bond Fund Balance		--		
Scholarship		--		
Fund Balance-Rounding Diff		--		
Fund Balances:				
Reserve for Encumbrance		--		
Fund Balance	12,934,733	--	12,934,733	13,930,674
Reserve For Operations		--		
TOTAL EQUITY AND OTHER CREDITS:	12,934,733		12,934,733	13,930,674
TOTAL LIABILITIES,	12,934,733		12,934,733	13,930,674
EQUITY AND OTHER CREDITS:				

Wharton County Junior College
 Combined Balance Sheet--All Fund Types and Account Groups
 31-DEC-2022
 (With comparative totals for 31-DEC-2021)
 (amounts expressed in dollars)

	Account Groups					Prior Year 2022
	Debt Retirement Bond Fund	Investment in Plant Fund	Unexpended Plant Fund	Repair and Replacement	Current Year 2023	
ASSETS and OTHER DEBITS:						
ASSETS:						
Cash	177,712	--	-7,282,631	7,450,031	345,113	472,944
Cash Investments	390,884	--	8,919,672	--	9,310,557	9,751,390
Accounts Receivable	--	--	12,487	--	12,487	4,107
Taxes Receivable	--	--	--	--	--	--
Local, St & Fed Agency Receivable	--	--	--	--	--	--
Deposits	--	--	--	--	--	--
Due From Other Funds	--	--	--	--	--	--
Prepaid Expense	--	--	--	--	--	--
Property, Plant & Equipment	--	46,443,097	--	--	46,443,097	46,225,806
Deferred Outflows	--	--	--	--	--	--
TOTAL ASSETS AND OTHER DEBITS:	568,597	46,443,097	1,649,528	7,450,031	56,111,253	56,454,247
Liabilities, equity and other credits						
LIABILITIES:						
Accounts Payable	--	--	--	--	--	--
Employee Benefits Payable	--	--	--	--	--	--
Payroll Taxes Payable	--	--	--	--	--	--
Accrued Liabilities	--	1,339,512	--	--	1,339,512	1,351,645
Deferred Revenue	--	--	--	--	--	--
Long Term Debt	--	365,584	--	--	365,584	716,168
Net Pension Liability	--	--	--	--	--	--
Net OPEB Liability	--	--	--	--	--	--
Lease Liab - Long Term	--	8,988,334	--	--	8,988,334	8,988,334
Deposits Payable	--	--	--	--	--	--
Due To Other Funds	--	--	--	--	--	--
Scholarships-Designated Donations	--	--	--	--	--	--
Scholarships-Non-designated	--	--	--	--	--	--
Donatio	--	--	--	--	--	--
Deferred Inflows	--	--	--	--	--	--
TOTAL LIABILITIES:		10,693,430			10,693,430	11,056,147
EQUITY AND OTHER CREDITS:						
Control Accounts	--	--	--	--	--	--
Fund Balances	--	--	--	--	--	--
Prior Year Fund Balance	--	--	--	--	--	--
Endowment Fund-Original	--	--	--	--	--	--
Endowment Fund-Income	--	--	--	--	--	--

Memorandum Only

	Current Year 2023	Prior Year 2022
ASSETS and OTHER DEBITS:		
ASSETS:		
Cash	5,952,191	7,715,488
Cash Investments	39,394,986	39,042,004
Accounts Receivable	4,283,598	3,959,446
Taxes Receivable	1,503,603	1,595,488
Local, St & Fed Agency Receivable	433,045	1,394,858
Deposits		4,892
Due From Other Funds	604,783	318,276
Prepaid Expense		39,679
Property, Plant & Equipment	46,443,097	46,225,806
Deferred Outflows	9,340,694	10,285,070
TOTAL ASSETS AND OTHER DEBITS:	107,955,996	110,581,007
Liabilities, equity and other credits		
LIABILITIES:		
Accounts Payable	128,632	77,909
Employee Benefits Payable	81,653	121,571
Payroll Taxes Payable	194	-1,678
Accrued Liabilities	1,339,512	1,351,645
Deferred Revenue	504,751	728,708
Long Term Debt	365,584	716,168
Net Pension Liability	4,103,835	9,228,835
Net OPEB Liability	32,567,646	32,567,646
Lease Liab - Long Term	8,988,334	8,988,334
Deposits Payable	321,831	323,076
Due To Other Funds	604,783	318,276
Scholarships-Designated Donations	62,708	76,642
Scholarships-Non-designated	1,013,220	771,527
Donatio		
Deferred Inflows	9,710,668	6,185,814
TOTAL LIABILITIES:	59,793,350	61,454,473
EQUITY AND OTHER CREDITS:		
Control Accounts	1,841	144
Fund Balances		
Prior Year Fund Balance	-19,313,888	-19,417,360
Endowment Fund-Original		
Endowment Fund-Income		
FB Professional Development		
FB Salary Equity		
FB Capital Equipment	37,378,818	35,559,119
FB Investment Gain And Loss		

Memorandum Only

	Current Year 2023	Prior Year 2022
Fund Balance Receivables	-	-
Reserved-Undesignated		
FBTC Operating Fund Balance		
Plant Fund Balance		
Bond Fund Balance		
Scholarship		
Fund Balance-Rounding Diff	-	-
Fund Balances:		
Reserve for Encumbrance	2,006,027	3,271,149
Fund Balance	28,089,848	29,713,482
Reserve For Operations		
TOTAL EQUITY AND OTHER CREDITS:	48,162,646	49,126,534
TOTAL LIABILITIES,	107,955,996	110,581,007
EQUITY AND OTHER CREDITS:		

INVESTMENTS
December 31, 2022

WHARTON COUNTY JUNIOR COLLEGE**INVESTMENT IN TEXPOOL****December 31, 2022****MONTHLY INTEREST RATE 3.9799%**

	ACCOUNT	AVERAGE	END-OF-		YEAR-TO-
		DAILY	MONTH	MONTHLY	DATE
FUND	NUMBER	BALANCE	BALANCE	EARNINGS	EARNINGS
UNRESTRICTED	2411100002	3,136,989.98	3,164,981.18	10,599.31	42,128.96
AUXILIARY	2411100001	766,069.03	\$768,490.89	2,588.88	6,412.72
RESTRICTED	2411100017	9,938.94	9,970.33	33.56	107.07
SCHOLARSHIP	2411100019	793,924.79	796,434.70	2,683.01	8,561.07
ENDOWMENT	2411100014	819,207.67	821,797.52	2,768.46	10,681.71
PLANT	2411100015	1,634,144.61	1,639,310.82	5,522.50	17,621.40
AGENCY	2411100016	161,049.26	161,558.39	544.24	1,736.61
92 RESERVE	2411100018	389,652.57	390,884.42	1,316.80	4,201.73
			\$7,753,428.25	\$26,056.76	\$91,451.27

**WHARTON COUNTY JUNIOR COLLEGE
HISTORY OF TEXPOOL INTEREST RATES**

<u>MONTH</u>	<u>2008</u>	<u>2009</u>	<u>2010</u>	<u>2011</u>	<u>2012</u>	<u>2013</u>	<u>2014</u>	<u>2015</u>	<u>2016</u>	<u>2017</u>	<u>2018</u>	<u>2019</u>	<u>2020</u>	<u>2021</u>	<u>2022</u>
JANUARY	4.2460%	0.9529%	0.1630%	0.1587%	0.0875%	0.0986%	0.0273%	0.0465%	0.2674%	0.5385%	1.2989%	2.3892%	1.5925%	0.0793%	0.0376%
FEBRUARY	3.4374%	0.6690%	0.1512%	0.1470%	0.0903%	0.0935%	0.0283%	0.0441%	0.3010%	0.5591%	1.3438%	2.3972%	1.5908%	0.0431%	0.0632%
MARCH	2.9723%	0.5788%	0.1577%	0.1461%	0.1150%	0.1047%	0.0299%	0.0480%	0.3273%	0.6222%	1.5156%	2.4164%	1.0034%	0.0187%	0.1536%
APRIL	2.4471%	0.4762%	0.1662%	0.1122%	0.1110%	0.1022%	0.0336%	0.0524%	0.3380%	0.7121%	1.6704%	2.4344%	0.4552%	0.0135%	0.3042%
MAY	2.2812%	0.4326%	0.1935%	0.0838%	0.1246%	0.0715%	0.0244%	0.0553%	0.3399%	0.7689%	1.7159%	2.4005%	0.2685%	0.0102%	0.6228%
JUNE	2.2635%	0.3939%	0.2078%	0.0793%	0.1395%	0.0576%	0.0284%	0.0575%	0.3633%	0.8817%	1.8110%	2.3812%	0.2165%	0.0131%	1.0013%
JULY	2.2460%	0.3384%	0.2259%	0.0665%	0.1316%	0.0531%	0.0313%	0.0630%	0.3690%	0.9714%	1.8896%	2.3876%	0.2082%	0.0189%	1.5206%
AUGUST	2.2878%	0.3380%	0.2279%	0.0851%	0.1313%	0.0437%	0.0353%	0.0716%	0.3737%	0.9989%	1.9205%	2.1715%	0.1768%	0.0222%	2.1627%
SEPTEMBER	2.4068%	0.2822%	0.2165%	0.0929%	0.1572%	0.0394%	0.0333%	0.0850%	0.3799%	1.0151%	1.9953%	2.1635%	0.1474%	0.0279%	2.4126%
OCTOBER	1.9762%	0.2095%	0.2036%	0.0839%	0.1657%	0.0498%	0.0268%	0.0966%	0.3828%	1.0318%	2.1438%	1.9115%	0.1335%	0.0354%	2.9336%
NOVEMBER	1.8207%	0.2112%	0.1917%	0.1033%	0.1564%	0.0446%	0.0286%	0.1105%	0.3987%	1.0506%	2.2030%	1.6774%	0.1231%	0.0381%	3.6110%
DECEMBER	1.4855%	0.2090%	0.1587%	0.0871%	0.1506%	0.0372%	0.0418%	0.1863%	0.4570%	1.1764%	2.2872%	1.6226%	0.0909%	0.0376%	3.9799%

INVESTMENT REPORT

1ST QUARTER 2023

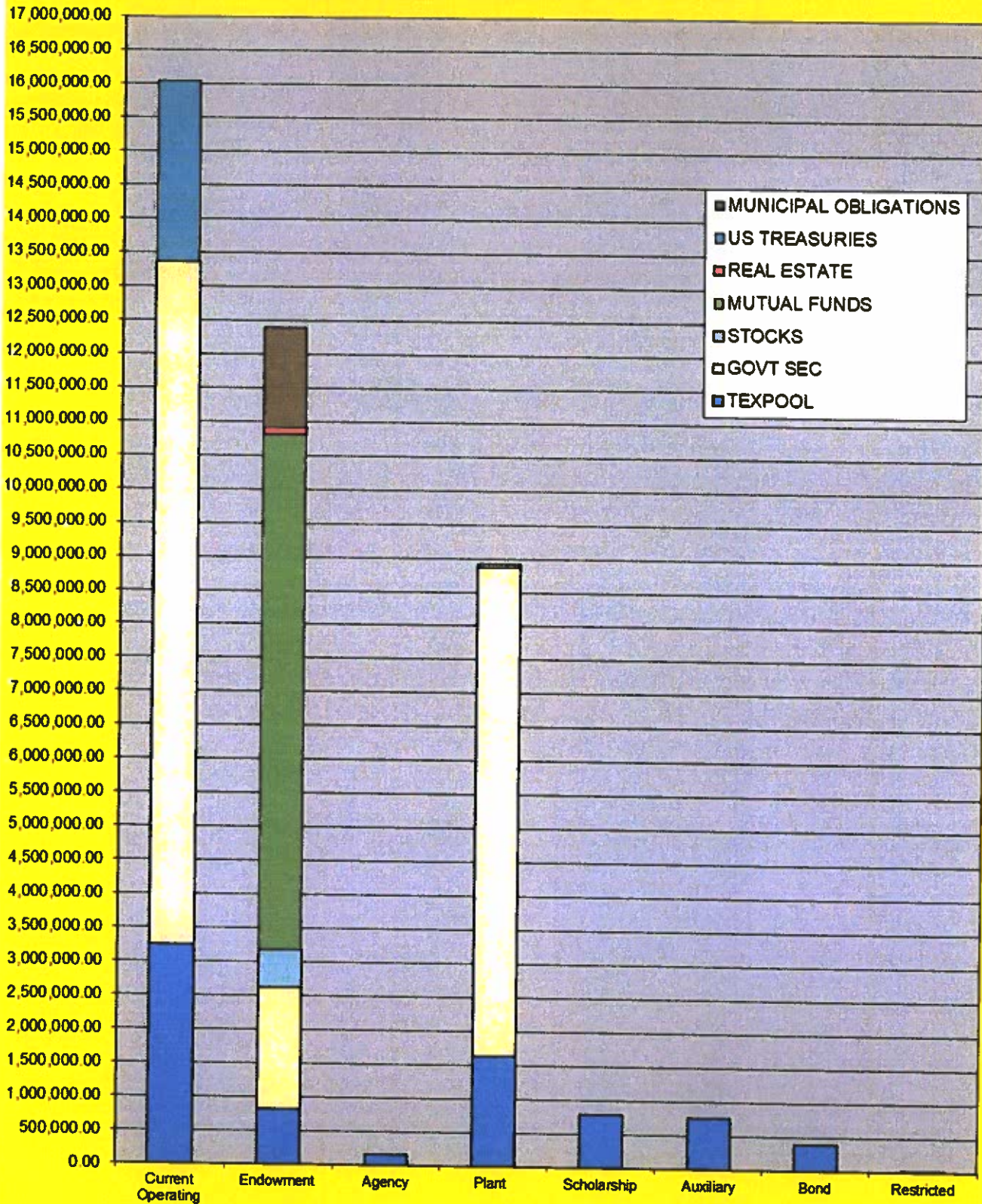
Period Beginning 09/01/22 Ending 11/30/22

November 30, 2022

The report that follows details the investments and earnings made by Wharton County Junior College (the College). Investments for all funds excluding the Endowment fund were made according to the College's investment policy dated July 19, 2022 and reflect compliance with the Texas Public Funds Investments Act, Chapter 2256.023. Investments for the Endowment fund were made according to the College's Endowment Fund Investment Policy.

Summarized below are the investments made by type of investment. Please see the attached schedules for further detail. Please direct all questions to Bryce Kocian, Investment Officer and Vice-President of Administrative Services, Wharton County Junior College, 911 Boling Highway, Wharton, Texas 77488. Phone: 979/532-6315 E-mail: brycek@wcjc.edu

INVESTMENTS BY FUND & TYPE



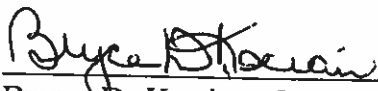
TOTAL INVESTMENT INCOME

(as of period ending date 11/30/22)

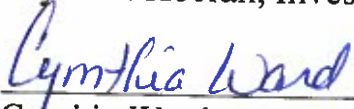
	INCOME AMOUNT THIS QUARTER (Earned & Accrued)	QUARTER ENDING MARKET VALUE (Includes gains and losses)
TEXPOOL	\$ 65,394.51	\$ 7,825,162.64
US TREASURIES	\$ 6,928.10	\$ 2,682,188.00
GOVERNMENT SECURITIES	\$ 57,055.05	\$ 19,153,048.91
MUNICIPAL OBLIGATIONS	\$ 4,120.75	\$ 1,478,657.60
STOCKS	\$ 3,160.06	\$ 599,393.66
MUTUAL FUNDS	\$ 14,788.84	\$ 7,619,452.65
REAL ESTATE	\$ 0.00	\$ 111,000.00

EXPLANATION OF REPORT TERMS

This report reflects the market value at the end of the stated period. This market value, what an independent, willing buyer will pay for the asset being offered, is based on information from various sources, usually a report by the firm from which the security was obtained or the Wall Street Journal. Yields are obtained from the same source as the market value. Starting with the F/Y 1997 financial statements all investments are stated at fair value, as required by GASB 31 and income is accrued each quarter.



Bryce D. Kocian, Investment Officer



Cynthia Ward, Investment Officer



Wharton County Junior College
 811 Baling Highway • Wharton, Texas 77448 • (979) 533-2500

Quarter Ending November 30, 2022 F/Y 23

SUMMARY

SUMMARY

FUND	S&P CREDIT RATING	MATURITY DATE	BEGINNING BOOK VALUE	BEGINNING MARKET VALUE	CHANGES		ENDING MARKET VALUE	INCOME ACCRUED OR RECEIVED	ENDING BOOK VALUE	MATURITY VALUE	YIELD
					ADDITIONS	DEDUCTIONS					
CURRENT OPERATING											
TEXPOOL	AAAm	N/A	4,945,171.21	4,945,171.21	3,307,001.81	(5,000,000.00)	3,252,173.02	31,529.65	3,252,173.02	N/A	2.99%
US GOVT TREASURIES	AA+	06/30/25	987,462.99	914,258.00	1,104.42	(9,620.42)	905,742.00	1,727.71	988,567.41	1,000,000.00	0.70%
US GOVT TREASURIES	AA+	02/28/26	966,120.89	903,086.00	2,416.14	(13,744.14)	891,758.00	3,642.17	968,537.03	1,000,000.00	1.50%
US GOVT TREASURIES	AA+	07/31/26	995,937.50	898,438.00	0.00	(13,750.00)	884,688.00	1,558.22	995,937.50	1,000,000.00	0.71%
TOTAL US GOVT TREASURIES			2,949,521.38	2,715,782.00	3,520.56	(37,114.56)	2,682,188.00	6,928.10	2,953,041.94	3,000,000.00	0.96%
GOVT SECUR-FFCB	AA+	01/13/25	997,220.00	923,251.89	0.00	(10,366.52)	912,885.37	747.94	997,220.00	1,000,000.00	0.37%
GOVT SECUR-FFCB	AA+	03/09/26	1,000,000.00	905,003.93	0.00	(13,408.17)	891,595.76	1,961.64	1,000,000.00	1,000,000.00	0.80%
GOVT SECUR-FHLB	AA+	07/26/24	1,000,000.00	940,716.38	0.00	(9,485.27)	931,231.11	1,239.72	1,000,000.00	1,000,000.00	0.50%
GOVT SECUR-FHLB	AA+	10/28/26	999,750.00	900,013.76	0.00	(16,454.08)	883,559.68	2,727.40	999,750.00	1,000,000.00	1.11%
GOVT SECUR-FHLB	AA+	10/14/25	999,500.00	914,316.66	0.00	(12,038.83)	902,277.83	1,983.56	999,500.00	1,000,000.00	0.81%
GOVT SECUR-FFCB	AA+	11/15/24	1,000,000.00	937,609.06	0.00	(11,159.74)	926,449.32	1,814.52	1,000,000.00	1,000,000.00	0.74%
GOVT SECUR-FHLB	AA+	11/18/26	1,000,000.00	905,420.05	0.00	(17,000.92)	888,419.13	3,138.63	1,000,000.00	1,000,000.00	1.28%
GOVT SECUR-FFCB	AA+	12/01/25	1,001,500.00	927,151.38	0.00	(13,474.05)	913,677.33	3,340.82	1,001,500.00	1,000,000.00	1.30%
GOVT SECUR-FHLB	AA+	01/27/27	1,000,000.00	919,083.12	0.00	(15,598.19)	903,484.93	4,363.02	1,000,000.00	1,000,000.00	1.75%
GOVT SECUR-FHLB	AA+	03/29/27	1,147,156.90	1,090,429.89	971.71	(24,053.93)	1,067,347.67	7,541.99	1,148,128.61	1,165,000.00	2.66%
GOVT SECUR-FFCB	AA+	05/18/26	1,000,000.00	904,003.61	0.00	(14,457.63)	889,545.98	2,206.85	1,000,000.00	1,000,000.00	0.90%
TOTAL GOVT SECUR			11,145,126.90	10,266,999.73	971.71	(157,497.33)	10,110,474.11	31,066.09	11,145,098.61	11,165,000.00	1.14%
TOTAL INVESTMENT IN FUND			19,039,819.49	17,927,952.94	3,311,494.08	(5,194,611.89)	16,044,835.13	69,523.84	17,351,313.57	14,165,000.00	1.45%
ENDOWMENT											
TEXPOOL	AAAm	N/A	1,165,851.81	1,165,851.81	7,913.25	(354,736.00)	819,029.06	7,913.25	819,029.06	N/A	2.99%
STOCK-NCR	B+	N/A	180.04	558.90	0.00	(129.24)	429.66	0.00	180.04	N/A	N/A
STOCK-TERADATA	Not Rated	N/A	503.64	592.20	22.50	0.00	614.70	0.00	503.64	N/A	N/A
STOCK-Bankamerica Corp(Nations) (Barnett)	A-	N/A	10,615.28	7,931.96	1,000.64	0.00	8,932.60	51.92	10,615.28	N/A	N/A
STOCK-Team Inc	Not Rated	N/A	5,504.40	219.30	0.00	(102.19)	117.11	0.00	5,504.40	N/A	N/A
STOCK-VALERO	BBB	N/A	1,868.00	23,424.00	3,300.00	0.00	26,724.00	588.00	1,868.00	N/A	N/A
STOCK-TENNECO	B	N/A	69.51	396.06	23.94	0.00	420.00	0.00	69.51	N/A	N/A
STOCK-OCCIDENTAL	BB+	N/A	6,492.98	36,352.00	0.00	(773.12)	35,578.88	66.56	6,492.98	N/A	N/A
STOCK-OCCIDENTAL WARRANTS	BB+	N/A	0.00	3,131.52	0.00	(91.52)	3,040.00	0.00	0.00	N/A	N/A
STOCK-EXXONMOBIL	AA-	N/A	8,734.00	19,118.00	3,150.00	0.00	22,268.00	176.00	8,734.00	N/A	N/A
STOCK-TENET HEALTHCARE	B+	N/A	4,594.99	1,921.00	0.00	(350.88)	1,570.12	0.00	4,594.99	N/A	N/A
STOCK-WALMART	AA	N/A	19,688.00	53,020.00	7,948.00	0.00	60,968.00	224.00	19,688.00	N/A	N/A
STOCK-DUKE ENERGY	BBB+	N/A	19,978.57	30,896.99	0.00	(2,017.22)	28,879.77	290.45	19,978.57	N/A	N/A
STOCK-ENBRIDGE,INC	BBB+	N/A	6,444.90	6,224.22	10.57	0.00	6,234.79	73.97	6,444.90	N/A	N/A
STOCK-IBM	A-	N/A	5,348.40	7,707.00	1,227.00	0.00	8,934.00	99.00	5,348.40	N/A	N/A
STOCK-KYNDRYL	BBB-	N/A	0.00	125.04	15.48	0.00	140.52	0.00	0.00	N/A	N/A
STOCK-APPLE COMPUTER	AA+	N/A	5,304.82	352,172.80	0.00	(20,585.60)	331,587.20	515.20	5,304.82	N/A	N/A
STOCK-ARKEMA	BBB+	N/A	217.20	509.08	10.61	0.00	519.69	0.00	217.20	N/A	N/A
STOCK-TOTAL ENERGIES SE	A+	N/A	14,385.28	13,435.66	3,168.06	0.00	16,603.72	131.77	14,385.28	N/A	N/A
TOTAL STOCK			109,930.01	557,735.73	19,876.80	(24,049.77)	553,562.76	2,216.87	109,930.01	N/A	N/A
MUTUAL FUND-DREYFUS MDCP INDX	NA	N/A	2,620,257.16	2,303,707.70	145,386.89	0.00	2,449,094.59	0.00	2,620,257.16	N/A	15.41%
MUTUAL FUND-FIDELITY SEL UTIL	NA	N/A	876,836.35	1,279,892.57	6,386.64	(22,129.92)	1,264,149.29	6,386.64	883,222.99	N/A	8.54%
MUTUAL FUND-FIDELITY SMALL CAP GROV	NA	N/A	1,344,250.77	1,391,183.05	26,045.76	0.00	1,417,228.81	0.00	1,344,250.77	N/A	4.62%
MUTUAL FUND-VOYA CORP LEAD TRST	NA	N/A	723,366.45	1,144,730.34	86,132.10	0.00	1,230,862.44	0.00	723,366.45	N/A	2.60%
MUTUAL FUND-VNGRD HI DIV YIELD INDX	NA	N/A	790,750.62	1,144,191.25	113,926.27	0.00	1,258,117.52	8,402.20	799,152.82	N/A	4.55%
TOTAL MUTUAL FUNDS			6,355,461.35	7,263,704.91	377,877.66	(22,129.92)	7,619,452.65	14,788.84	6,370,250.19	N/A	9.47%
GOVT SECUR-FFCB	AA+	04/14/25	1,000,000.00	924,903.09	0.00	(11,662.15)	913,240.94	1,710.82	1,000,000.00	1,000,000.00	0.69%
GOVT SECUR-FHLB	AA+	04/14/26	1,000,000.00	909,067.44	0.00	(14,263.98)	894,803.46	2,578.63	1,000,000.00	1,000,000.00	1.04%
TOTAL GOVT SECUR			2,000,000.00	1,833,970.53	0.00	(25,926.13)	1,808,044.40	4,289.45	2,000,000.00	2,000,000.00	0.87%
MUNICIPAL OBLIGATIONS	AA	06/01/26	1,675,555.78	1,510,290.95	0.00	(31,633.35)	1,478,657.60	4,120.75	1,673,524.68	1,645,000.00	0.99%

FUND	S&P	MATURITY DATE	BEGINNING	BEGINNING	CHANGES		ENDING	INCOME	ENDING	MATURITY	YIELD
	CREDIT RATING		BOOK VALUE	MARKET VALUE	ADDITIONS	DEDUCTIONS	MARKET VALUE	ACCRUED OR RECEIVED	BOOK VALUE		
REAL ESTATE			111,000.00	111,000.00	0.00	0.00	111,000.00	0.00	111,000.00	N/A	N/A
TOTAL INVESTMENT IN FUND			11,417,798.95	12,442,553.93	405,667.71	(458,475.17)	12,389,746.47	33,329.16	11,083,733.94	3,645,000.00	5.18%
PLANT											
TEXPOOL (except Tech Center acct)	AAAm	N/A	1,621,689.42	1,621,689.42	12,098.90	0.00	1,633,788.32	12,098.90	1,633,788.32	N/A	2.99%
GOVT SECUR-FHLB	AA+	06/30/26	1,000,000.00	906,300.48	0.00	(15,290.89)	891,009.59	2,493.15	1,000,000.00	1,000,000.00	1.00%
GOVT SECUR-FHLMC	AA+	11/25/24	999,000.00	930,723.81	0.00	(10,618.85)	920,104.96	1,103.42	999,000.00	1,000,000.00	0.48%
GOVT SECUR-FHLB	AA+	01/28/26	1,000,000.00	899,093.58	0.00	(12,255.60)	886,837.98	1,446.03	1,000,000.00	1,000,000.00	0.58%
GOVT SECUR-FHLB	AA+	04/29/26	1,000,000.00	908,489.01	0.00	(14,470.54)	894,018.47	2,603.43	1,000,000.00	1,000,000.00	1.05%
GOVT SECUR-FHLB	AA+	05/23/25	1,000,000.00	915,777.16	0.00	(11,116.36)	904,660.80	1,246.57	1,000,000.00	1,000,000.00	0.50%
GOVT SECUR-FHLB	AA+	04/14/27	997,000.00	953,699.58	0.00	(19,863.33)	933,836.25	7,128.42	997,000.00	1,000,000.00	2.94%
GOVT SECUR-FFCB	AA+	11/30/26	1,000,300.00	918,269.72	0.00	(19,332.03)	898,937.69	3,839.45	1,000,300.00	1,000,000.00	1.53%
GOVT SECUR-FHLB	AA+	11/20/25	1,000,000.00	917,798.35	0.00	(12,673.69)	905,124.66	1,839.04	1,000,000.00	1,000,000.00	0.75%
TOTAL GOVT SECURITIES			7,996,300.00	7,350,151.69	0.00	(115,621.28)	7,234,530.40	21,699.51	7,996,300.00	8,000,000.00	1.10%
STOCK- HEWLETT PACKARD (HP Inc)	BBB	N/A		2,268.09	105.07	0.00	2,373.16	19.75	0.00	N/A	N/A
STOCK- HP ENTERPRISE CO	BBB	N/A		1,074.40	251.22	0.00	1,325.62	9.48	0.00	N/A	N/A
STOCK- DXC TECHNOLOGY (Spin off of HP	BBB -	N/A		148.68	29.34	0.00	178.02	0.00	0.00	N/A	N/A
STOCK- MICRO FOCUS (Spin off of HPE - 10	BB-	N/A		48.24	1.52	0.00	49.76	0.00	0.00	N/A	N/A
STOCK- COCA COLA (The Coca-Cola Co)	A+	N/A		2,098.14	64.60	0.00	2,162.74	14.96	0.00	N/A	N/A
STOCK- DEVON ENERGY	BBB	N/A		40,959.60	0.00	(1,218.00)	39,741.60	899.00	0.00	N/A	N/A
TOTAL STOCK			0.00	46,597.15	451.75	(1,218.00)	45,830.90	943.19	0.00	N/A	N/A
TOTAL INVESTMENT IN FUND			9,617,989.42	9,018,438.26	12,550.65	(116,839.29)	8,914,149.62	34,741.60	9,630,088.32	8,000,000.00	1.42%
BOND											
TEXPOOL	AAAm	N/A	386,682.69	386,682.69	2,884.93	0.00	389,567.62	2,884.93	389,567.62	N/A	2.99%
AUXILIARY											
TEXPOOL	AAAm	N/A	407,342.17	407,342.17	358,559.84	0.00	765,902.01	3,823.84	765,902.01	N/A	2.99%
SCHOLARSHIP											
TEXPOOL	AAAm	N/A	787,873.63	787,873.63	5,878.06	0.00	793,751.69	5,878.06	793,751.69	N/A	2.99%
AGENCY											
TEXPOOL	AAAm	N/A	159,821.78	159,821.78	1,192.37	0.00	161,014.15	1,192.37	161,014.15	N/A	2.99%
RESTRICTED											
TEXPOOL	AAAm	N/A	9,863.26	9,863.26	73.51	0.00	9,936.77	73.51	9,936.77	N/A	2.99%
TOTAL STOCKS			109,930.01	604,332.88	20,328.65	(25,267.77)	599,393.66	3,160.06	109,930.01	N/A	N/A
TOTAL MUTUAL FUNDS			6,385,481.35	7,283,704.91	377,877.86	(22,129.92)	7,619,452.65	14,788.84	6,370,250.19	N/A	9.47%
TOTAL US TREASURIES			2,949,521.38	2,715,782.00	3,820.86	(37,114.58)	2,682,188.00	6,928.10	2,953,041.94	3,000,000.00	0.96%
TOTAL GOVT SECURITIES			21,141,426.90	19,481,121.95	971.71	(289,044.78)	19,193,048.91	57,065.05	21,142,398.61	21,165,000.00	1.10%
TOTAL MUNICIPAL OBLIGATIONS			1,875,555.78	1,510,290.95	0.00	(31,633.35)	1,478,657.60	4,120.75	1,673,524.68	1,645,000.00	0.99%
TOTAL CD'S			0.00	0.00	0.00	0.00	0.00	0.00	0.00	0.00	0.00%
TOTAL TEXPOOL			9,484,295.97	9,484,295.97	3,696,602.67	(5,354,736.00)	7,825,162.64	65,394.61	7,825,162.64	N/A	2.99%
TOTAL MONEY MARKET			(0.00)	(0.00)	0.00	0.00	(0.00)	0.00	(0.00)	N/A	0.00%
TOTAL REAL ESTATE			111,000.00	111,000.00	0.00	0.00	111,000.00	0.00	111,000.00	N/A	N/A
TOTAL ALL INVESTMENTS			41,827,191.39	41,140,528.66	4,098,301.15	(5,769,926.35)	39,468,903.46	151,447.31	40,185,308.07	N/A	2.39%



Wharton County Junior College
 911 Boling Highway • Wharton, Texas 77488 • (979) 532-4560

INVESTMENT REPORT FOR THE FIRST QUARTER FISCAL YEAR 2023

Period includes 09/01/2022 - 11/30/2022

FUND/INVESTMENT	BEGINNING	CHANGES		ENDING	ENDING	PREVIOUS	INCOME	YIELD	
	MARKET	ADDITIONS	DEDUCTIONS	MARKET	BOOK	YEAR - ENDING			
	VALUE	VALUE	VALUE	VALUE	VALUE	BOOK VALUE F/Y 22			TYPE
CURRENT OPERATING									
INVESTMENT IN TEXPOOL	4,945,171.21	3,307,001.81	(5,000,000.00)	3,252,173.02	3,252,173.02	4,945,171.21	INTEREST	31,529.65	2.99%
INVESTMENT IN US GOVT TREASURIES	2,715,782.00	3,520.56	(37,114.56)	2,682,188.00	2,953,041.94	2,949,521.38	INTEREST	6,928.10	0.96%
INVESTMENT IN GOVERNMENT SECURITIES	10,266,999.73	971.71	(157,497.33)	10,110,474.11	11,146,098.61	11,145,126.90	INTEREST	31,066.09	1.14%
TOTAL INVESTMENT IN FUND	17,927,952.94	3,311,494.08	(5,194,611.89)	16,044,835.13	17,351,313.57	19,039,819.49		69,523.84	1.45%
WEIGHTED AVERAGE MATURITY OPERATING FUNDS (DAYS)	683.16								
ENDOWMENT									
INVESTMENT IN TEXPOOL	1,165,851.81	7,913.25	(354,736.00)	819,029.06	819,029.06	1,165,851.81	INTEREST	7,913.25	2.99%
INVESTMENT IN GOVERNMENT SECURITIES	1,833,970.53	0.00	(25,926.13)	1,808,044.40	2,000,000.00	2,000,000.00	INTEREST	4,289.45	0.87%
INVESTMENT IN MUNICIPAL OBLIGATIONS	1,510,290.95	0.00	(31,633.35)	1,478,657.60	1,673,524.68	1,675,555.78	INTEREST	4,120.75	0.99%
INVESTMENT IN STOCKS	557,735.73	19,876.80	(24,049.77)	553,562.76	109,930.01	109,930.01	DIVIDENDS	2,216.87	N/A
INVESTMENT IN MUTUAL FUNDS	7,263,704.91	377,877.66	(22,129.92)	7,619,452.65	6,370,250.19	6,355,461.35	DIVIDENDS	14,788.84	9.47%
INVESTMENT IN REAL ESTATE	111,000.00	0.00	0.00	111,000.00	111,000.00	111,000.00	LEASE	0.00	
TOTAL INVESTMENT IN FUND	12,442,553.93	405,667.71	(458,475.17)	12,389,746.47	11,083,733.94	11,417,798.95		33,329.16	5.18%
WEIGHTED AVERAGE MATURITY ENDOWMENT FUND (DAYS)	897.20								
PLANT									
INVESTMENT IN TEXPOOL	1,621,689.42	12,098.90	0.00	1,633,788.32	1,633,788.32	1,621,689.42	INTEREST	12,098.90	2.99%
INVESTMENT IN GOVERNMENT SECURITIES	7,350,151.69	0.00	(115,621.29)	7,234,530.40	7,996,300.00	7,996,300.00	INTEREST	21,699.51	1.10%
INVESTMENT IN STOCKS	46,597.15	451.75	(1,218.00)	45,830.90	0.00	0.00	DIVIDENDS	943.19	
TOTAL INVESTMENT IN FUND	9,018,438.26	12,550.65	(116,839.29)	8,914,149.62	9,630,088.32	9,617,989.42		34,741.60	1.42%

FUND/INVESTMENT	BEGINNING	CHANGES		ENDING	ENDING	PREVIOUS	INCOME	YIELD	
	MARKET	ADDITIONS	DEDUCTIONS	MARKET	BOOK	YEAR - ENDING			
	VALUE			VALUE	VALUE	BOOK VALUE FY 2			TYPE
BOND									
INVESTMENT IN TEXPOOL	386,682.69	2,884.93	0.00	389,567.62	389,567.62	386,682.69	INTEREST	2,884.93	2.99%
TOTAL INVESTMENT IN FUND	386,682.69	2,884.93	0.00	389,567.62	389,567.62	386,682.69		2,884.93	2.99%
WEIGHTED AVERAGE MATURITY PLANT & BOND FUNDS (DAYS)	915.51								
AGENCY									
INVESTMENT IN TEXPOOL	159,821.78	1,192.37	0.00	161,014.15	161,014.15	159,821.78	INTEREST	1,192.37	2.99%
TOTAL INVESTMENT IN FUND	159,821.78	1,192.37	0.00	161,014.15	161,014.15	159,821.78		1,192.37	2.99%
AUXILIARY									
INVESTMENT IN TEXPOOL	407,342.17	358,559.84	0.00	765,902.01	765,902.01	407,342.17	INTEREST	3,823.84	2.99%
TOTAL INVESTMENT IN FUND	407,342.17	358,559.84	0.00	765,902.01	765,902.01	407,342.17		3,823.84	2.99%
SCHOLARSHIP									
INVESTMENT IN TEXPOOL	787,873.63	5,878.06	0.00	793,751.69	793,751.69	787,873.63	INTEREST	5,878.06	2.99%
TOTAL INVESTMENT IN FUND	787,873.63	5,878.06	0.00	793,751.69	793,751.69	787,873.63		5,878.06	2.99%
RESTRICTED									
INVESTMENT IN TEXPOOL	9,863.26	73.51	0.00	9,936.77	9,936.77	9,863.26	INTEREST	73.51	2.99%
TOTAL INVESTMENT IN FUND	9,863.26	73.51	0.00	9,936.77	9,936.77	9,863.26		73.51	2.99%

	This period		Previous year	
TOTAL	39,468,903.46	40,185,308.07	41,827,191.39	TOTAL 151,447.31 2.39%
stocks	599,393.66	109,930.01	109,930.01	stocks 3,160.06
mutual funds	7,619,452.65	6,370,250.19	6,355,461.35	mutual funds 14,788.84
US Treasuries	2,682,188.00	2,953,041.94	2,949,521.38	US Treasuries 6,928.10
govt sec	19,153,048.91	21,142,398.61	21,141,426.90	govt sec 57,055.05
Municipal Obligations	1,478,657.60	1,673,524.68	1,675,555.78	Municipal Oblig 4,120.75
CD's	0.00	0.00	0.00	CD's 0.00
Texpool	7,825,162.64	7,825,162.64	9,484,295.97	Texpool 65,394.51
Money Market	(0.00)	(0.00)	(0.00)	Prosperity Accou 0.00
Real Estate	111,000.00	111,000.00	111,000.00	Real Estate 0.00
	39,468,903.46	40,185,308.07	41,827,191.39	151,447.31

Wharton County Junior College
Investment Weighted Average Maturity
For Quarter Ending November 2022

INVESTMENT DESCRIPTION	PURCHASE DATE	MATURITY DATE	MATURITY VALUE	DAYS TO MATURITY	WAM (DAYS)
OPERATING FUNDS					
CASH			9,863,770.89	1	0.41
GOVT SECUR-FHLB 3130ALYR9	4/26/2021	7/26/2024	1,000,000.00	604	25.14
GOVT SECUR-FFCB 3133ENDU1	11/15/2021	11/15/2024	1,000,000.00	716	29.80
GOVT SECUR-FFCB 3133EMMQ2	1/15/2021	1/13/2025	1,000,000.00	775	32.25
US TREASURY - 912828ZW3	6/22/2021	6/30/2025	1,000,000.00	943	39.24
GOVT SECUR-FFCB 3133ENAP5	10/14/2021	10/14/2025	1,000,000.00	1,049	43.66
GOVT SECUR-FFCB 3133ENFR6	12/9/2021	12/1/2025	1,000,000.00	1,097	45.65
US TREASURY - 91282CBQ3	1/20/2022	2/28/2026	1,000,000.00	1,186	49.36
GOVT SECUR-FFCB 3133EMSU7	3/9/2021	3/9/2026	1,000,000.00	1,195	49.73
GOVT SECUR-FFCB 3133EMZS4	5/18/2021	5/18/2026	1,000,000.00	1,265	52.65
US TREASURY - 91282CCP4	8/6/2021	7/31/2026	1,000,000.00	1,339	55.72
GOVT SECUR-FHLB 3130APHB4	10/28/2021	10/28/2026	1,000,000.00	1,428	59.43
GOVT SECUR-FHLB 3130APNZ4	11/18/2021	11/18/2026	1,000,000.00	1,449	60.30
GOVT SECUR-FHLB 3130AQNR0	1/27/2022	1/27/2027	1,000,000.00	1,519	63.22
GOVT SECUR-FHLB 3130ARBF7	4/1/2022	3/29/2027	1,165,000.00	1,580	76.60
TOTAL OPERATING FUNDS			24,028,770.89		
WEIGHTED AVERAGE MATURITY DAYS-OPERATING FUNDS					683.16
ENDOWMENT FUNDS					
CASH			1,038,432.61	1	0.22
GOVT SECUR-FFCB 3133EMVS8	4/14/2021	4/14/2025	1,000,000.00	866	184.91
GOVT SECUR-FHLB 3130ALVZ4	4/14/2021	4/14/2026	1,000,000.00	1,231	262.84
MUNICIPAL OBLIGATION - 135591HF5					
CANADIAN COUNTY OK ISD GO	6/24/2021	6/1/2026	1,645,000.00	1,279	449.23
TOTAL ENDOWMENT			4,683,432.61		
WEIGHTED AVERAGE MATURITY DAYS ENDOWMENT FUNDS					897.20
PLANT AND BONDS FUNDS					
CASH			2,360,695.55	1	0.23
GOVT SECUR-FHLMC 3134GXDZ4	3/4/2021	11/25/2024	1,000,000.00	726	70.07
GOVT SECUR-FHLB 3130ANK74	8/23/2021	5/23/2025	1,000,000.00	905	87.35
GOVT SECUR-FHLB 3130AMFV9	5/20/2021	11/20/2025	1,000,000.00	1,086	104.82
GOVT SECUR-FHLB 3130AKPQ3	1/28/2021	1/28/2026	1,000,000.00	1,155	111.48
GOVT SECUR-FHLB 3130ALYY4	4/29/2021	4/29/2026	1,000,000.00	1,246	120.26
GOVT SECUR-FHLB 3130AMYJ5	6/30/2021	6/30/2026	1,000,000.00	1,308	126.25
GOVT SECUR-FFCB 3133ENFN5	12/9/2021	11/30/2026	1,000,000.00	1,461	141.01
GOVT SECUR-FHLB 3130ARGQ8	4/14/2022	4/14/2027	1,000,000.00	1,596	154.04
TOTAL PLANT			10,360,695.55		
WEIGHTED AVERAGE MATURITY DAYS PLANT AND BOND FUNDS					915.51