

# **Badger School**

## **Crisis Plan**

Badger Independent School District #676

August 1999

Revised December 22, 2015

December 2017

March 2020

BADGER COMMUNITY CRISIS RESOURCE LIST

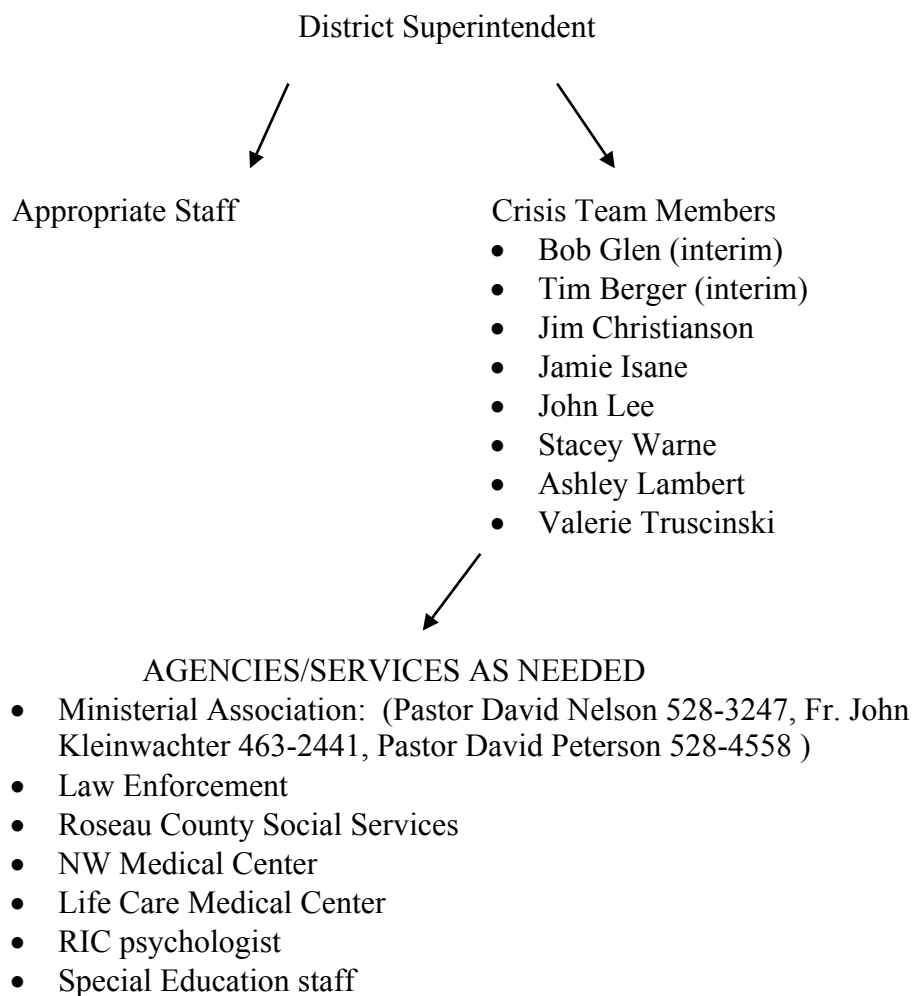
9/27/17, March 2020

<u>DEPARTMENT</u>	<u>CONTACT</u>	<u>PHONE NUMBER</u>
Badger Fire Department	Jeremy Swenson	911
Badger First Responders	Angie Gregerson Barb Holum	911 911
Roseau County LEC	Steve Gust	463-1421
Roseau County Emergency Mgr	Susan Grafstrom	463-3375
BHS Social Worker	John Lee	528-4626
Life Care Ambulance	Don Dunn	463-2500
Local Immediate First Aid	Barb Holum	528-3775
Public Health	Julie Pahlen	463-2500
Local Nurse	Misty Maahs	218-242-2560
Respiratory Therapist	Chris Berger	463-2500
RIC Psychologists	Jeremy Sollund Kathleen Kallis	218-874-8215 218-874-8215
Special Education Staff	Jessica Voll Ashley Anderson	218-230-0355 218-242-1117
Roseau County Social Services	Karla Langaas	463-2411
Badger School Crisis Team	John Lee Tim Berger (interim) Bob Glen (interim) Ashley Lambert Kevin Ricke Jim Christianson Jamie Isane Stacey Warne Valerie Truscinski	528-4626 218-242-3581 218-528-3568 218-689-1444 218-849-6100 218-469-0246 218-689-7540 218-452-0065 1-701-741-6875

## BADGER COMMUNITY/SCHOOL CRISIS CALLING TREE

**Badger School Superintendent is the official spokesperson for Badger School in emergency/crisis situations. All media information MUST be cleared by Superintendent's office.**

**All school personnel are reminded of the need to maintain confidentiality in all situations.**



Crisis Team will meet to discuss, evaluate and determine plan of action as the situation warrants (i.e. school dismissal, transportation of students, parental contact).

## BADGER COMMUNITY/SCHOOL CRISIS PLAN

### I. Disaster Preparedness

- A. Fire
- B. Tornado
- C. School Closings/Severe Weather

### II. Event Preparedness

- A. Death
  - 1. Natural Causes
  - 2. Suicide
  - 3. Homicide
  - 4. Accidental death
- B. Accidents
  - 1. Internal – within building/adjacent property
  - 2. External – beyond site boundaries
- C. Personal Safety Issues
  - 1. Vandalism
  - 2. Unauthorized entry
  - 3. Threats (Verbal/Physical/Cyber)

### III. Emergency Preparedness

- A. Hostage
- B. Serious assault
- C. Rape
- D. Weapons
- E. Shootings
  - 1. Internal – within building/adjacent property
  - 2. External – beyond site boundaries
- F. Bomb threat/bomb explosion
- G. Drive-by-shooting
- H. Abduction
- I. Disaster Preparedness
  - A. Fire**
    - fire drills will be held 5 times a year
    - fire drill exits will be posted in every room
    - students and staff will exit building and evacuate to the Badger Town Hall/Our Redeemer's Lutheran Church (winter months)
    - instructors will take class roll at evacuation site
    - call 911

I. Disaster Preparedness (continued)

**B. Tornado**

- tornado drill will be conducted in the spring
- students and staff are to remain in safety areas until notified it is safe to return to classrooms
- tornado safety areas will be posted in every room

**BADGER SCHOOL TORNADO PROCEDURES**  
**REVISED 10/17**

STUDENTS ARE TO ASSUME THE TRADITIONAL TORNADO STANCE (DOWN ON BOTH KNEES, HEAD DOWN BETWEEN THE KNEES, STAY DOWN UNTIL THE ALL CLEAR SIGNAL IS GIVEN). THE TORNADO WARNING SIREN IS AN INTERMITTENT BELL.

<u>STUDENTS</u>	<u>SUPERVISING STAFF</u>	<u>LOCATION</u>
Preschool	Beth Brandon/Tami Davy	PE Office
Kindergarten	Mary Langaas/Annie Prestegord	Elementary boys' bathroom
Grade 1	Heidi Warne/Lorraine Kukowski	Elementary girls' bathroom
Grade 2	Becky Dostal/John Lee	Social Worker's Office
Grade 3	Katie Schaan/Sherry Verbout	Title I room
Grade 4	Kelly Grahn/Brienne Miller	Elementary Special Ed room
Grade 5	Jackie Simmons/Brienne Miller	Elementary Special Ed room
Grade 6	Sarah Johnson/Renee Rhen	High School boys' rest room
Grade 7	Mike Coltom/Diann Hauger	Locker room by PE Office
Grade 8	Brady Johnson/Shannon Dostal	Science Storeroom
Grade 9	Becky Ylitalo/Remaining Staff	Teacher Workroom
Grade 10	Sherri Kruger/ Elizabeth Lane	HS girls' restroom
Grade 11	Gretchen Lee/Ashley Haman	High School Special Ed room
Grade 12	Ashley Lambert/Janice Mostofi	Locker room by PE Office
Food Service personnel		Kitchen storage room

### **C. School Closing/Severe Weather**

- parents, students and staff will be notified through the automated Blackboard Connect calling system
- all weather related announcements will be made over radio stations KKWQ in Warroad (92.5 FM) and KCAJ in Roseau (102.1 FM)
- staff will have access to online storm calling tree
- students will have a STORM PROVISIONS letter completed by their parents and in their file in the event severe weather prohibits the transportation of students to their home.

## **II. Event Preparedness**

### **A. Death**

- 1. Natural Causes*
- 2. Suicide*
- 3. Homicide*
- 4. Accidental Death*

- notify all staff privately
- give information to staff to announce to their students (where to send students/what to say to students/details of the school's plan)
- students that were close to the deceased should be told privately by counselor or administrator
- provide counseling for high-risk students after the event
- debriefing for students and staff

### **B. Accidents**

- 1. Internal – within building/adjacent property*

- call 911
- administer First Aid
- provide privacy for victim(s)

- 2. External – beyond site boundaries*

- call 911
- administer First Aid
- provide privacy for victim(s)
- monitor crowd

### **C. Personal Safety Issues**

- 1. Vandalism*

- call 911

- 2. Unauthorized Entry*

- call 911
- students and staff remain in classrooms away from windows

- 3. Threats (Verbal/Physical/Cyber)*

- call 911
- lockdown building if threat is external

### III. Emergency Preparedness

#### A. Hostage

- call 911
- person answering the phone take down all pertinent information

#### B. Serious Assault

- call 911
- administer First Aid

#### C. Rape

- call 911
- administer First Aid

#### D. Weapons

- call 911

#### E. Shootings

##### 1. *Internal – within building/adjacent property*

- call 911
- students and staff remain inside classrooms away from windows

##### 2. *External – beyond site boundaries*

- call 911
- students and staff should seek shelter inside the building

#### F. Bomb threat/bomb explosion

- person receiving message obtain pertinent information
- call 911
- students and staff evacuate to Badger Town Hall
- staff take class roll at evacuation site
- staff keep your students together at the evacuation site
- staff and students will be notified over the PA system “Evacuate the Building Immediately”

#### G. Drive-by-shooting

- call 911
- students and staff stay inside classrooms away from windows

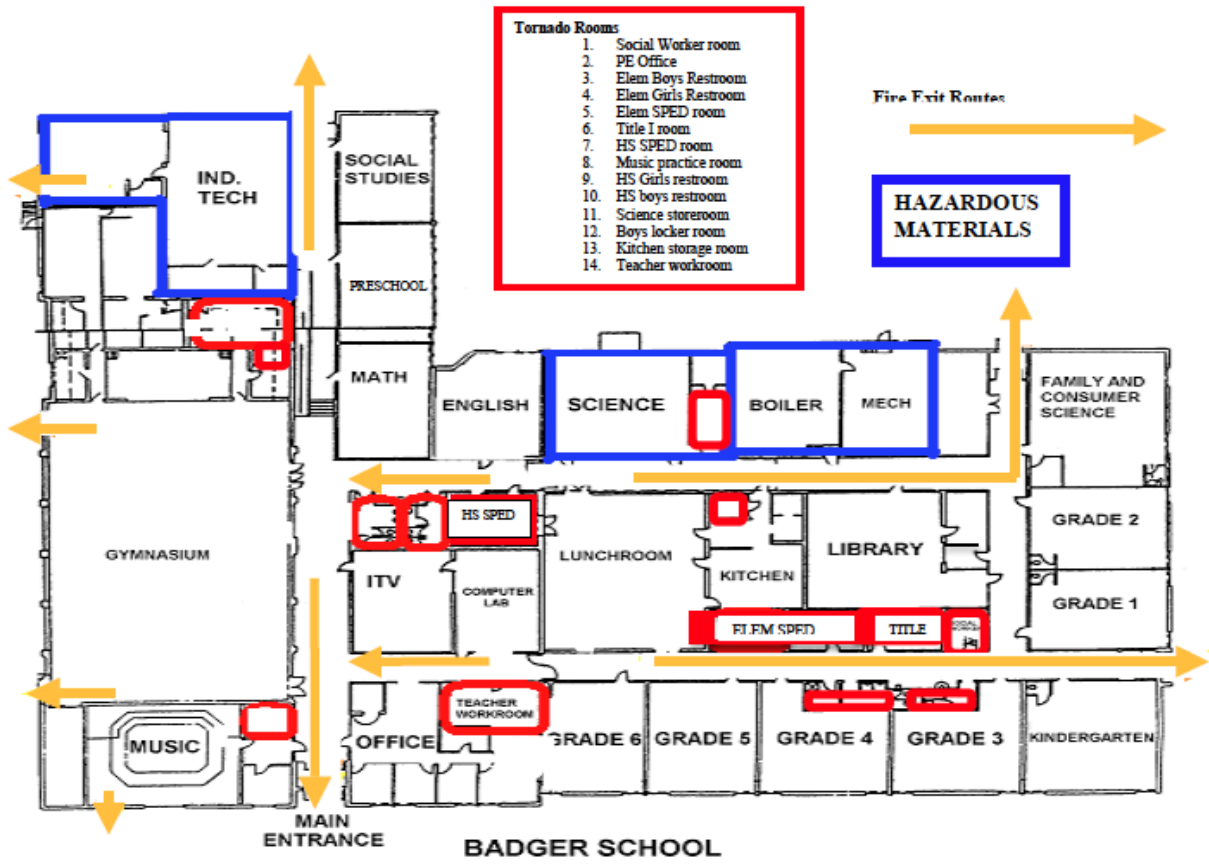
#### H. Abduction

- call 911
- students and staff stay inside classrooms

## **LOCKDOWN PROCEDURE**

- lockdown procedures will be practiced 5 times a year.
- office will announce over the PA system “Badger School is initiating lockdown”
- staff responsible to lock doors:
  - front entrance (Truscinski)
- students and staff are to remain in their respective classrooms
- staff lock you and your students in the room
- staff and students stay away from outside windows
- staff and students stay away from areas where an intruder could see you from the inside hallway
- turn lights off in your classroom
- pull shades in your room
- rooms are numbered on the inside and outside for emergency personnel – staff must use these numbers when communicating with the office







       **Fire Department Response Route**

----- **Student and Staff Evacuation to Community Hall Route**

..... **Cold Weather Route to Bus Garage**

- **Fire Hydrant Locations**

       **EMS Reponse Route**