

DON'T WAIT. GRADUATE.



**PREMIER
HIGH SCHOOL®**

Amendment Request

September 2023

RESPONSIVE EDUCATION SOLUTIONS TEAM

Rhonda Bradford	RES AR Superintendent
Dennis Felton, Jr. (Presenter)	AR State Director, Premier High Schools & Virtual Learning
Katie Stephens	RES AR Executive Director of Finance
Curtis Shack	Executive Director of Data and Systems Management
Darius Young	PHS of AR District Testing Coordinator
Aaron Duvall	RES AR CTE Director
Dr. Katina Ray	PHS Director of Academics
Marla Pearson	RES AR Director Special Programs

Amendment Request Overview



- 1) Expansion:** To add additional PHS campuses in Russellville & Fayetteville.
- 2) Enrollment Cap:** PHS of Arkansas is seeking to increase the overall enrollment cap for the charter from 975 to 1,225 students.

PHS MISSION

Our mission is to provide **hope** for students through a **caring, mastery-based, blended learning** option, that promotes a free society and cultivates **moral and academic excellence.**



WHO WE SERVE?

- Students seeking a smaller, personalized in person or virtual learning environment
- Disengaged students
- Students who have or are “at-risk” of dropping out of high school
- Employed student
- Parent student
- Delinquent youth



Why do we continue to “expand” and “exist”?

- 1) Provide an innovative academic program to Arkansas communities that offers a unique educational opportunity with an emphasis on educationally disengaged students.
- 2) Decrease the dropout rate and increase the graduation rate in Arkansas communities where educationally disadvantaged students are a concern.
- 3) To be responsive to parent and student flexibility and needs.
- 4) To replicate best practices in “personalized learning” in Arkansas to increase program capacity and accessibility.
- 5) Premier High School serves ALL...



Premier High Schools in Arkansas

Current Locations

PHS Little Rock

PHS North Little Rock

PHS Springdale

PHS Fort Smith

PHS Texarkana

PHS Online

Arkansas



Premier High Schools in Arkansas

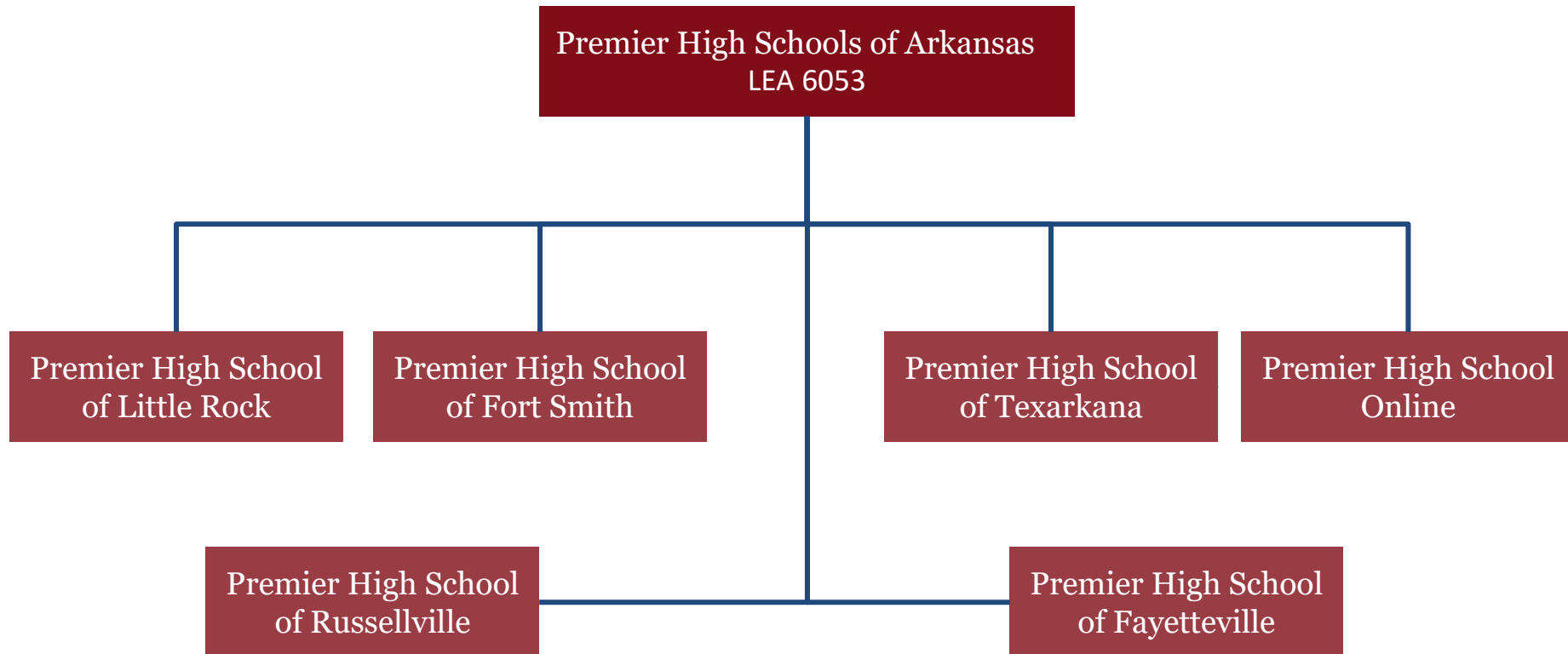
Expansion Locations

PHS Russellville

PHS Fayetteville



District Structure



Enrollment Breakdown by School

Campus	Current Enrollment Cap	Submitted Enrollment	Current Enrollment
Little Rock	175	80	94
Fort Smith	175	84	103
Texarkana	125	53	66
Premier Online	500	205	250
Total	875	422	513

Proposed Enrollment Breakdown by LEA

Campus	Enrollment Cap
Little Rock	175
Fort Smith	175
Texarkana	125
Premier Online	500
Russellville	75
Fayetteville	175
Total	1225



PREMIER
HIGH SCHOOL.

Arkansas Expansion- Premier High Schools

School Openings

2013: PHS Little Rock

2019: PHS North Little Rock

2021: PHS Springdale

**2022: PHS Fort Smith,
PHS Texarkana,
PHS Online**

**2024: PHS Fayetteville &
PHS Russellville**

Arkansas



PREMIER
HIGH SCHOOL.

Currently serving over 700 students across Arkansas

Arkansas Statewide Impact- Premier High

2022-2023 Reflection

- 129** Arkansas High School Diplomas Awarded
- 42** Dropout Recovery Graduates
- 35** Early Graduates
- 23** Industry Based Certifications earned
- 65** Students earned credit through JAG
- 34** WBL hours completed
- 32** Community Service learning hours
- 1800+** Attendees across six (6) graduations

Premier High Schools Year in Review

PHS Little Rock

- Graduated 14 students
- JAG Implementation/CTE (Drone, Digital Marketing, Cosmetology)
- PEER Grant Student Growth

Fort Smith (1st Year of Operation)

- Graduated 20 students
- PEAK Center Partnership/Community Support/JAG Implementation

Texarkana (1st Year of Operation)

- Graduated 6 students
- UAHT Partnership & Community Support/JAG Implementation



Premier High Schools Year in Review

PHS Online (1st Year of Operation)

-Graduated 37 students

PHS Springdale

-Graduated 21 students

-WBL Implementation

-EAST Initiative

PHS North LR

-Graduated 31 students

-CTE Implementation/JAG

-PEER Grant Student Growth

Success & Recognition

- Student Engagement & Attendance
- NWEA MAP Growth & Participation
- State Assessment Participation
- PEER Grant Participation
- Community Partners in Student Incentives
- CTE Partnership
- Higher Ed Partnership



PHS SATELLITE CAMPUS FEATURES

Personnel: Campus Director, Campus Secretary, HQT/Certified Teachers, Student Engagement Specialists/Tutors

Career Technical Education Opportunities & Programs

Breakfast & Lunch Served

Smaller Campus By Design, More Personalized

PM Program & Afterhours Academic Support

School Hours of Operation

7:30-4:00



Premier High Schools 2.0

5 Year Expansion Plan

Improving & Sustaining a High Quality School Model

Improving Student Outcomes by Improving the Student's Experience

Expansion supported by Federal CSP Grant



Premier High Schools 2.0

Personalized Learning with Live Instruction

CTE Programs & Industry Based Endorsements

Post Secondary Planning Support

Concurrent Credit Opportunities

Minimester (Summer Program)



Premier High Schools 2.0

Student Innovation Hub/EAST Program

Virtual After Hours Academic Support Lab

PM School Program

Community Service Learning Projects

Jobs for America's Graduates (JAG) Program

High Quality PD/Leadership Capacity/Teacher Mentoring



Why Russellville & Fayetteville?

Parent Interest

Community Interest

Provide intervention and options for students who have dropped out of or are “at risk” or dropping out of high school

Students Seeking Premier Model (Flexibility, Personalized Learning, Mastery Based Learning)

Partners with community agencies and organizations that serve “at-risk” youth



Why Russellville & Fayetteville?

**Partnerships with local higher education institutions
(Arkansas Tech University Career Center, Univ. of AR,
NWACC, FPS (ALLPS), NWTI)**

**RHS Campus approx. 1,200 students vs PHS 50-60
students**

**FHS Campus approx. 3,000 students vs PHS 80-100
students**

**Alternate Educational Options and Innovative Academic
Model for Washington & Pope County**



COMMUNITY NEED

Opportunity Zone

- The United States Internal Revenue Service has identified Russellville, AR and Fayetteville, AR as an “opportunity zone”.
- Opportunity Zones are an economic development tool that help individuals identify distressed areas in the United States. The purpose of this designation is to spur economic growth and job creation in low-income communities.

Community Partners

Russellville

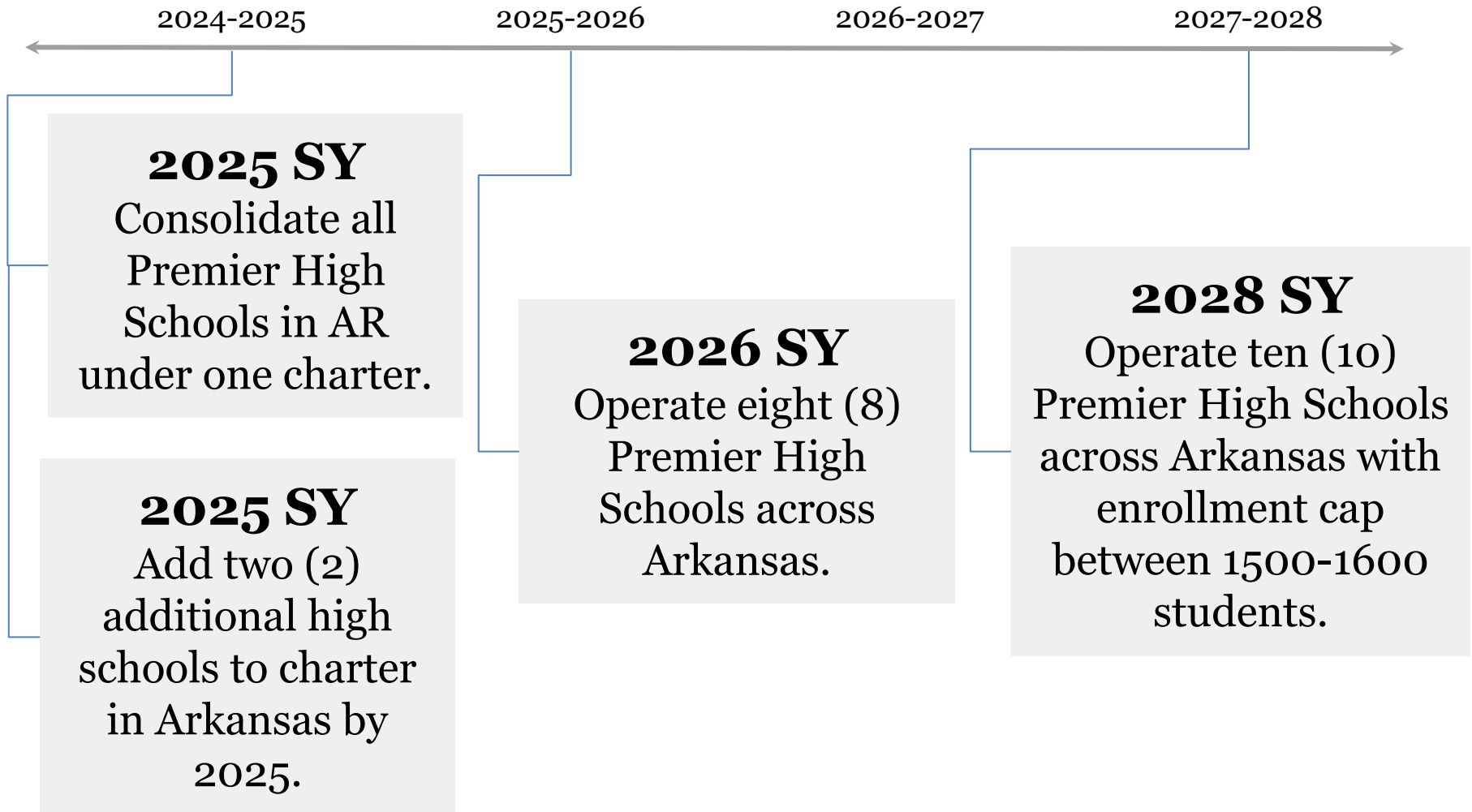
Arkansas Tech University Career Center
Russellville Juvenile Justice Division
Arkansas College of Beauty

PHS Fayetteville

Fayetteville Public Schools
Northwest Technical Institute
Chamber of Commerce
Northwest Arkansas Community College
Washington County Juvenile Drug Court



Long-Term Goals for Premier High Schools of AR



Long-Term Goals

Continue to partner and build relationships with community partners and local school district.

Continue to strive to meet all charter goals outlined in charter agreement with the state of Arkansas.

Provide quality assurance and adequate support for schools located throughout AR.

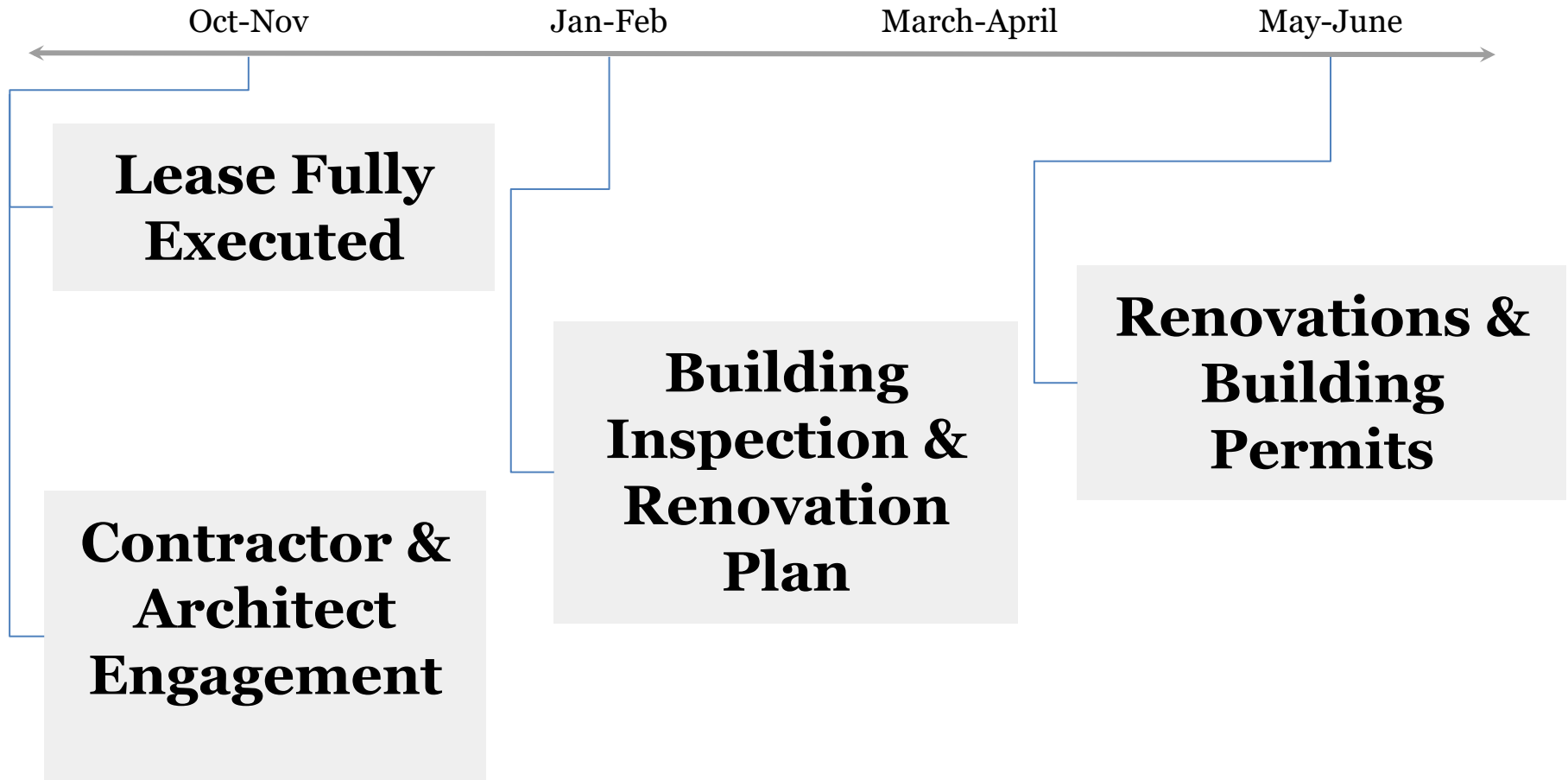
Financial Support

CSP Grant

Responsive Education Solutions has been awarded 1.4 million dollars in the federal Charter School Program grant to open up PHS Fayetteville & PHS Russellville



School Location Timeline



Benefits to Parents, Students, & the Community

- Additional seats will be available to parents and students seeking the Premier High School model.
- Students who reside in close proximity to a Premier High School will have the opportunity to engage in an innovative, encouraging learning environment.
- Arkansas students and parents who are seeking a personalized learning environment can enroll in Premier High School.



ResponsiveEd AR PREMIER GRADUATES



10 Year Anniversary Serving Arkansas

Inaugural Graduating Class:
10 graduates (2014)

Anticipate awarding over
150 high school diplomas
this year

More than **300** AR
Premier graduates to date

Amendment Request

- 1) Expansion:** To add additional PHS campuses in Russellville & Fayetteville to the Premier High Schools of Arkansas charter.
- 1) Enrollment Cap:** PHS of Arkansas is seeking to increase the overall enrollment cap for the charter from 975 to 1,225 students.



Premier High School



“Where the success of our students matter the most”

“Aiming to be responsive to the needs of the Arkansas communities”

Questions?



PREMIER
HIGH SCHOOL.