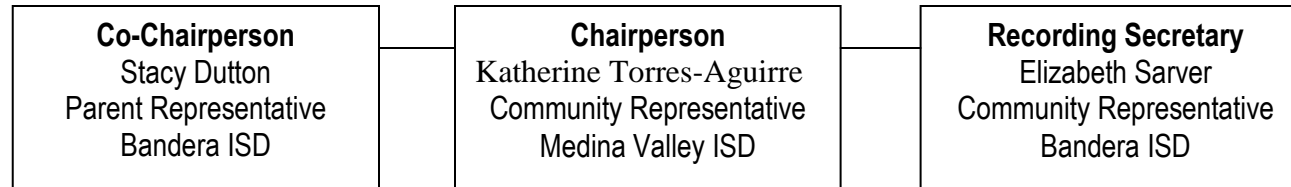


Education Service Center, Region 20 Tri - County Head Start Policy Council Organizational Chart



<u>Bandera ISD</u>	<u>Devine ISD</u>	<u>Hondo ISD</u>	<u>Lytle ISD</u>	<u>Medina Valley ISD</u>	<u>Natalia ISD</u>
Taniha Olvera Parent Representative	Naomi Leal Parent Representative	Laura Felan Parent Representative	Jennifer Tovar Parent Representative	Christopher Laggui Parent Representative	Ashley Andrade Parent Representative
Jordan Bakkala Alternate	Ruby Navarro Parent Representative	Juan Gonzalez Parent Representative	Vacant Parent Representative	Lauren Seuferer Parent Representative	Sabrina Martinez Parent Representative
	Meia Estala Community Representative	Laurie Felan Community Representative	August Castillo Community Representative	Rick Garcia Alternate	Krystal Sepulveda Community Representative
	Vacant Alternate	Genevie Garza Alternate	Nicole Dick Alternate		Mandy Key Alternate

Each school district has two parent representatives, one community representative and one alternate. The voting weight is equal across all six school districts.

Devine ISD and Lytle ISD has struggled with parent attendance and volunteers at parent meetings. Staff will continue to identify parent barriers for participation and to encourage their engagement.