



School District 622

NORTH ST. PAUL | MAPLEWOOD | OAKDALE

*Ready for tomorrow*



# Continuous Improvement for Success

ISD 622 Middle School Highlights

December 16, 2025

# Our Purpose: ISD 622 Strategic Plan

## OUR MISSION

District 622 will inspire lifelong learners who thrive in diverse communities.

## Academic Achievement

- Students will successfully meet academic standards.

## Graduation & Post-Secondary

- Students will graduate fully prepared for post-secondary success.

## Safety & Security

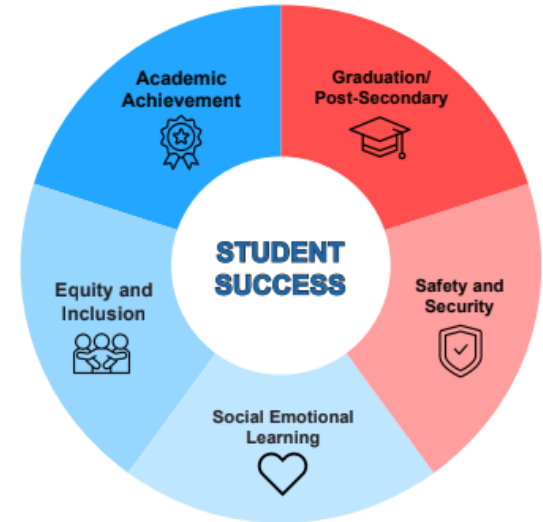
- Students and staff will feel physically and emotionally safe at school.

## Social Emotional Learning

- Students and staff will work and learn in a positive school culture that promotes personal well-being.

## Equity & Inclusion

- Students, staff, and families will feel welcomed and included as valued members of our diverse school community.



# Hopes and Dreams - John Tanner

ISD 622 Strategic Plan	What Matters to Families
Safety & Security, SEL, Equity/Inclusion	Well-Being
Academic Achievement, SEL, Graduation/Post-Secondary	Future Readiness
Academic Achievement, SEL, Equity/Inclusion	Engaged and Well-Rounded
Academic Achievement, SEL, Graduation/Post-Secondary	Student Learning
Equity/Inclusion, SEL	Community Connection
Safety/Security, Academic Achievement, SEL, Graduation/Post-Secondary, Equity/Inclusion	Effective Adults and Systems

In relation to the strategic plan and what matters to families...

How are we doing in our schools?

What work are we doing in our schools?

Academic Achievement, SEL, Graduation/Post-Secondary

# Student Learning

Is my student developing foundational skills of literacy & numeracy, the ability to communicate and collaborate, pursue deep learning, and connect learning to their needs and strengths?



School District 622

NORTH ST. PAUL | MAPLEWOOD | OAKDALE

*Ready for tomorrow*

# Student Learning

## Results:

JGMS MCA READING Proficiency Data

Grade:	2024 MCAs	2025 MCAs	Change
6th Grade	25%	34%	+9%
7th Grade	25%	27%	+2%
8th Grade	21%	32%	+11%
JGMS Overall	24%	31%	+8%

JGMS MCA MATH Proficiency Data

Grade:	2024 MCAs	2025 MCAs	Change
6th Grade	17%	22%	+5%
7th Grade	22%	20%	-2%
8th Grade	21%	32%	+11%
JGMS Overall	20%	24%	+4%



## Student Learning Opportunities/Resources:

- **Additional Literacy Opportunities**
  - Literacy 6
  - Communications 7
- **Technology Classes** - 6th, 7th, 8th
- **AVID** - Elective & Schoolwide - focus on SWICOR - speaking, writing, inquiry, collaboration, organization, and reading

## Responding to Individual Student Data:

- **Differentiated Small Group/Individualized Instruction**
- **Assessment Retakes** - in all classes
- **Reading Intervention** - FB & Capti Data
- **Afterschool Targeted Services Classes** - ELA & math



# Student Learning

**Describe the Common Assessment** (What do we want them to know?)

**MN Standard / Benchmark** [Alignment](#) [BALD](#) (level 3 or 4)

**Common Grading Agreement** (How will we know if they know it?)

	Levels of Understanding	Scoring Guidance (To get this score students must....)	Points* needed
4	<b>Exemplary:</b> shows mastery of the designated standard		
3	<b>Proficient:</b> shows understanding but lacks mastery		
2	<b>Developing:</b> shows basic understanding but inconsistent		
1	<b>Beginning:</b> shows limited understanding		
0	<b>Not Sufficient Evidence</b>		

\*grade conversion program available if needed

**Mistakes / Misunderstandings** (What do you see?)

**Conceptual Understanding** (How will it be developed?)

**Scaffolds** (What might be needed and when can it be implemented?)

Describe the Common Assessment (What do we want them to know?)

MN Standard / Benchmark [Alignment](#) [BALD](#) (level 3 or 4)

Common Grading Agreement (How will we know if they know it?)

Levels of Understanding	Scoring Guidance (To get this score students must....)	Points* needed
4 Exemplary: shows mastery of the designated standard		
3 Proficient: shows understanding but lacks mastery		
2 Developing: shows basic understanding but inconsistent		
1 Beginning: shows limited understanding		
0 Not Sufficient Evidence		

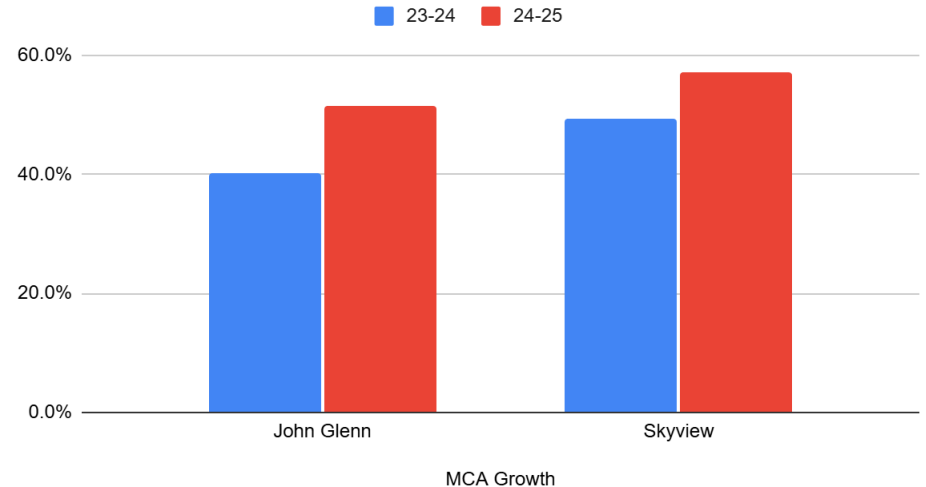
\*grade conversion program available if needed

Mistakes / Misunderstandings (What do you see?)

Conceptual Understanding (How will it be developed? Where in the resource?)

Scaffolds (What might be needed and when can it be implemented?)

## MCA Growth



Safety & Security, SEL, Equity/Inclusion

# Well-Being

Is my student physically and psychologically safe?

Do they have friends  
and do they feel connected to the school?



School District 622

NORTH ST. PAUL | MAPLEWOOD | OAKDALE

*Ready for tomorrow*





# Well-Being



## Well-Being Strategies:

- **Advisory Classes** - focus on SEL, community building, attendance, organization, and technology safety
- **Student Activities** - athletics, clubs/teams, FLIGHT, academic support classes
- **Mental Health Supports** - therapists (56 students), counselors, social worker
- **Check & Connect Supports** - academics, attendance, and social-emotional learning (100-120 students)
- **Monthly JGMS Community Market**
  - Serves approximately 120 families monthly (600+ people)
  - Cost is \$3500 per market - funded by Cross Lutheran
  - 100 Volunteer Hours per market - staff, students, Cross Lutheran volunteers
- **Collaborative Problem Solving**

## Consistent Attendance Results:

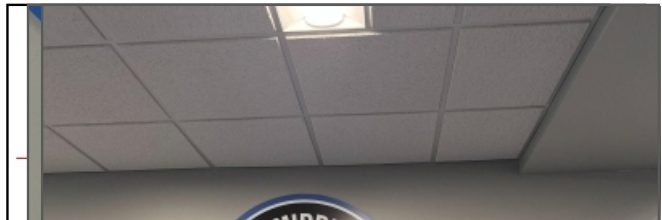
Time	% of JGMS Students w/Consistent Attendance - 90% or more days
SY24 Fall	73.90%
SY24 Winter	77.80%
SY24 Spring	69.10%
SY25 Fall	77.80%
SY25 Winter	67.10%
SY25 Spring	72.60%
SY26 Fall	80.50%

## Physical Incidents Results:

School Year	JGMS Number of Referrals for Physical Incidents (Trimester 1)
2022-23	28
2023-24	26
2024-25	10
2025-26	2



# Well-Being

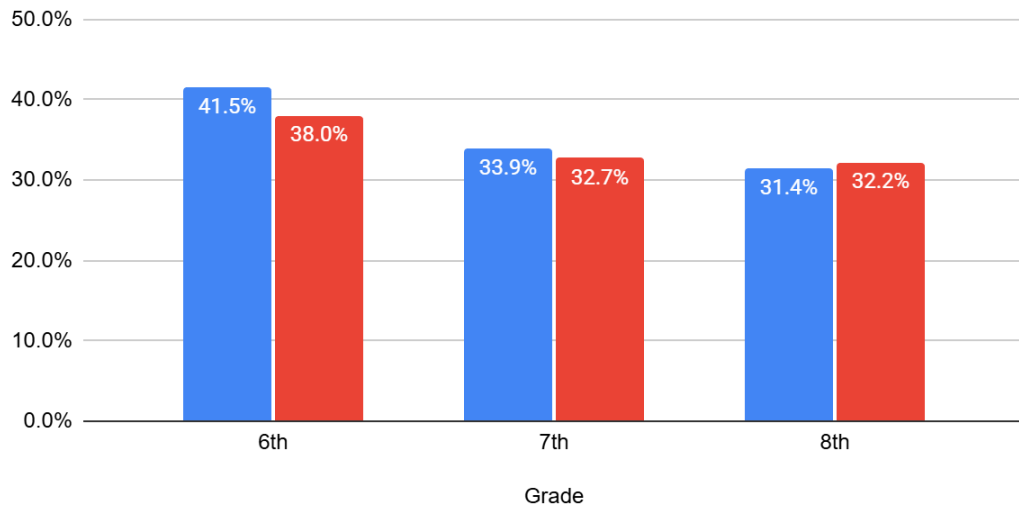


be at school

Hennepin County Attorney's Office

## Reading Proficiency (Consistent Attendance)

Black Students w/ consistent attendance Schoolwide



Safety/Security, Academic Achievement, SEL, Graduation/Post-Secondary, Equity/Inclusion

# Effective Adults and Systems

Will my student experience support from caring, highly skilled educators who put student needs first?

Does the school have systems in place to deliver on my hopes and dreams?



School District 622

NORTH ST. PAUL | MAPLEWOOD | OAKDALE

*Ready for tomorrow*



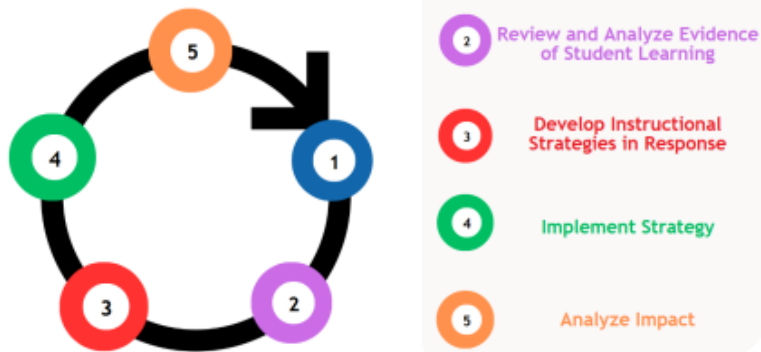
# Effective Adults & Systems

Hopes & Dreams - “Always stay confident, believe in yourself as much as I believe in you, get good grades, and be happy!”

## Effective Adults/Systems - PLCs

- What is it we expect students to learn?
- How will we know if they learned it?
- How will we respond if some students don't learn it?
- How will we respond when students already know it?

### PLC Inquiry Cycle at Work



## Adult Learning - “The Opportunity Makers”

### Study of Trajectory-Changing Schools

- 1.3+ years growth per year
- They create a culture of **belonging**.
- They deliver **consistent** grade-level instruction.
- They build a **coherent** instructional program.

### Focus on **CONSISTENCY** in 25-26:

- **Consistent Content:** All students do the same grade-level work with different supports.
- **Consistent Collaboration:** Teachers work in structured teams (PLCs) to improve instruction.
- **Consistent Reinforcement:** Instructional leaders maintain a simple, shared focus.



# Effective Adults & Systems



**OAKDALE**  
POLICE DEPARTMENT



- Partnership with local and state agencies to review Skyview's Emergency Response Plan and safety protocols.
- Made adjustments to lockdown protocols to increase staff and student sense of safety.
- Conducted a school safety drill with police, fire, and EMT personnel observing.

Equity/Inclusion, SEL

# Community Connection

Do I have a supportive, two-way relationship  
with my child's school?

Am I an active partner with the school  
for my student's development?



School District 622

NORTH ST. PAUL | MAPLEWOOD | OAKDALE

*Ready for tomorrow*



# Community Connection



## Events:

- **New “Meet Your Teacher” Night** in September (125 families)
- **5th Grade Spring Transition Activity** (400 students) - learning, fun, school tour
- **5th Grade Family Night** - (250 families)
- **JGMS Math Carnival** (800 people)
- **Student of the Month Programs** (250 students & families)
- **JGMS YMCA Student Art Gallery**



## Artifacts:



John Glenn 5th Grade Family Night - April 21, 2025

5:30-7:00 PM

Session Name	Session Description	Room Number
Academics/Daily Schedule	Information about classes, grading/assessments, bell schedule.	155
Athletics	Information on athletic and after school opportunities: registration, costs, sports physicals.	159
Band/Choir	Information on summer band opportunities, instrument rentals and the band program. Learn about our band/choir program and concerts.	173
FLIGHT/EPIC (after school activities)	Information about after school opportunities such as daily activities and enrichment. Find out what it's all about!	151
Mental Health Supports	Talk with our social worker and licensed therapists to see what we offer students and what you can do to support your student through stressful/difficult times. Also, meet our School Resource Officer (SRO) and find out what she is doing to connect with students at school and in the community.	178
Preparing Your Student for Middle School Life	How to support your middle school student and how families can maximize the student information and school communications.	176
Special Education	Information about how special education services are provided and how you can work jointly with your student's case manager	177
Technology Resources	Information about resources for parents such as ISD 622 App, Campus Parent, Titan School Solutions, My Ride K-12 and JG's School Store.	153

Session 1 = 5:45-6:00

Session 2 = 6:03-6:18

Session 3 = 6:21-6:36

Session 4 = 6:39-6:54



# Community Connection

## Skyview Open Invitation: Partnership and Transparency

At Skyview, we welcome opportunities to partner with the community, and we take seriously our responsibility to be transparent about how we use the public resources we're given.

Are you part of a local civic group, place of worship, neighborhood organization, or business? Do you have colleagues, friends, neighbors, or family members with questions about their local public middle school?

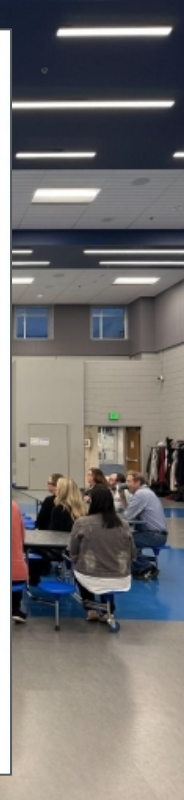
Please let them know that Skyview is open to scheduled visitors. I'm happy to give a tour, describe a typical middle school day, explain how we work to be good stewards of our resources, and show how we support students academically, socially, and behaviorally. All visits are scheduled in advance in accordance with our safety procedures.

I'm also available to visit community groups at their location—whether that's a meeting, gathering, or standing event—to share information, answer questions, hear feedback, and help build understanding about our school.

If someone is interested in connecting, they can email me directly at [jcavett@isd622.org](mailto:jcavett@isd622.org) to get the process started.



**Building Bridges**





# ISD 622 Middle Schools - Focus Areas

## John Glenn Middle School



### Continued Progress:

- Continue implementing curriculum resources using research based instructional strategies and using the PLC structure to analyze and respond to student data to continue improving teaching and student learning

### Fall Focus:

- **Consistent Content Focus:** All students do the same grade-level work with different supports.
- **Consistent Collaboration Focus:** Teachers work in structured teams (PLCs) to improve instruction. Begin using the PLC Inquiry Cycle in all content areas consistently
- **Consistent Reinforcement Focus:** Instructional leaders maintain a simple, shared focus

## Skyview Middle School

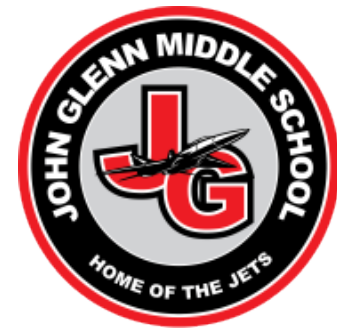


### Continued Progress

- Maintain current levels of reading and math achievement while supporting rigorous experiences for students in all content areas.

### Fall Focus

- **Staff Development:** review instructional materials and assessments for current use of Habits of Mind and Depth of Knowledge.
- **Instructional Consistency:** ensure grade level work that promotes deeper thinking through Habits of Mind and Depth of Knowledge alignment.
- **Collective Efficacy:** PLC and grade level collaboration on instructional planning and measuring student achievement.



# Questions