

Executive Summary for Enrollment/Transportation

August 14, 2018

- Attached is our enrollment data comparison for the first two days of school.
- One takeaway is comparing our overall enrollment from the first day (8/3/17 to 8/8/18), we have a positive increase of 17 students.
- Another takeaway is comparing our overall enrollment from the second day (08/04/2017 to 08/09/2018), we have a positive increase of 38 students.
- We have a total of 74 route buses for the 2018/2019 school year.
- Our earliest pickup of students is approximately 6:10.
- Our transportation department is doing a great job. The first two days we have delivered all students safely before 5:00.
- We are scheduled to begin our passenger counts on Monday, August 13th. At this time, we are transporting approximately 3,800 students.

**Opening Enrollment Raw Data Comparison
 Projected Enrollment 2018-2019 and Daily Reports for 2017-2018 and 2018-2019**

School	2018-2019 Projected Enrollment** (3 Yr Cohort)	Actual Reporting Day 1					
		08/03/2017			08/08/2018		
		Regular Ed	Reg Ed	SPED	Total	Reg Ed	SPED
Carver*	398	358		358	405		405
Joyner	392	371	5	376	373	4	377
Parkway	460	409	10	419	403	8	411
Thomas	369	346	7	353	345	8	353
Gr K-2	1619	1484	22	1506	1526	20	1546
Lawhon*	372	352	10	362	363	8	371
Lawndale	410	380	7	387	413	9	422
Pierce	331	324		324	352		352
Rankin	393	402	4	406	363		363
Gr 3-5	1506	1458	21	1479	1491	17	1508
Milam Gr 6	534	446	14	460	480	12	492
TMS Gr 7-8	970	987	14	1001	925	15	940
THS Gr 9-12	1936	1835	36	1871	1808	37	1845
Total K-12	6565	6210	107	6317	6230	101	6331
ECEC		115	23	138	125	16	141
Total PreK-12	6565	6325	130	6455	6355	117	6472

Projections and Comparisons 8-2018-All Data

*Lawhon grade 2 counted at Carver

Opening Enrollment Raw Data Comparison
Projected Enrollment 2018-2019 and Daily Reports for 2017-2018 and 2018-2019

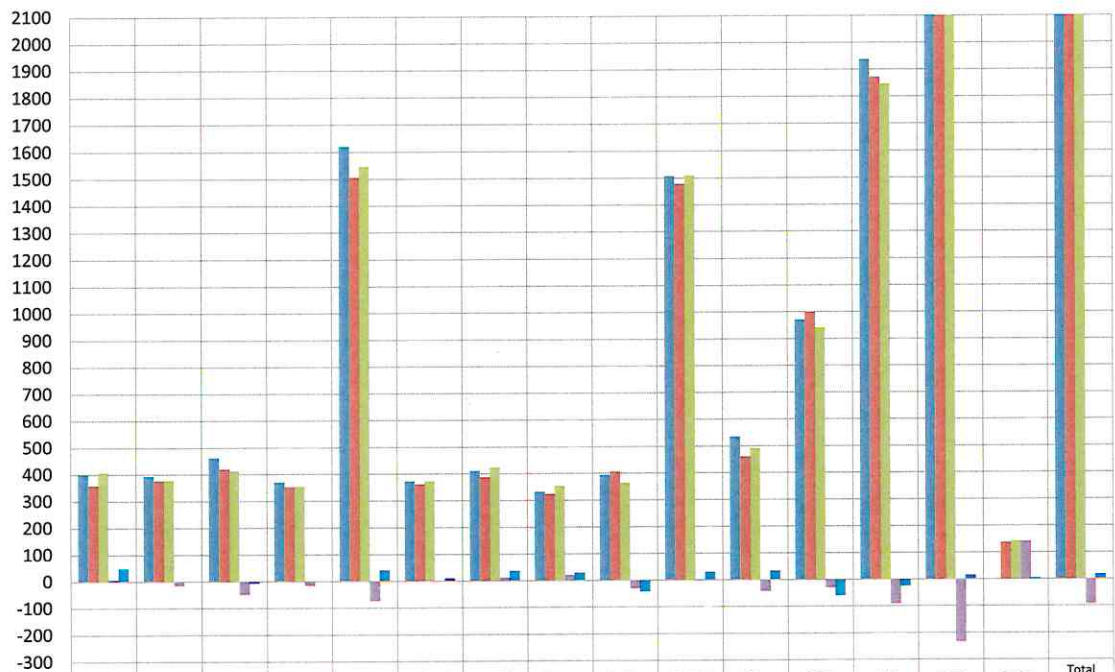
School	2018-2019 Projected Enrollment**	Day 1 8/3/17	Day 1 8/8/18	+/- Projections vs 8/8/18 Enrollment	+/- Enrollment 8/3/17 vs 8/8/18
Carver	398	358	405	7	47
Joyner	392	376	377	-15	1
Parkway	460	419	411	-49	-8
Thomas	369	353	353	-16	0
Gr K-2	1619	1506	1546	-73	40
Lawhon*	372	362	371	-1	9
Lawndale	410	387	422	12	35
Pierce	331	324	352	21	28
Rankin	393	406	363	-30	-43
Gr 3-5	1506	1479	1508	2	29
Milam	534	460	492	-42	32
TMS	970	1001	940	-30	-61
THS	1936	1871	1845	-91	-26
K-12	6565	6317	6331	-234	14
ECEC		138	141	141	3
Total PreK-12	6565	6455	6472	-93	17

*Lawhon grade 2 counted at Carver

Projections and Comparisons 8-2018-Summary Data

Enrollment Comparison - 2018/2019 Projections, Day 1 2017/2018 and Day 1 2018/2019

*Lawhon Gr 2 counted at Carver



	Carver	Joyner	Parkway	Thomas	Gr K-2	Lawhon*	Lawndale	Pierce	Rankin	Gr 3-5	Milam	TMS	THS	K-12	ECEC	Total PreK-12
2018-2019 Projected Enrollment**	398	392	460	369	1619	372	410	331	393	1506	534	970	1936	6565		6565
Day 1 8/3/17	358	376	419	353	1506	362	387	324	406	1479	460	1001	1871	6317	138	6455
Day 1 8/8/18	405	377	411	353	1546	371	422	352	363	1508	492	940	1845	6331	141	6472
+/- Projections vs 8/8/18 Enrollment	7	-15	-49	-16	-73	-1	12	21	-30	2	-42	-30	-91	-234	141	-93
+/- Enrollment 8/3/17 vs 8/8/18	47	1	-8	0	40	9	35	28	-43	29	32	-61	-26	14	3	17

Opening Enrollment Raw Data Comparison
Projected Enrollment 2018-2019 and Daily Reports for 2017-2018 and 2018-2019

School	2018-2019 Projected Enrollment** (3 Yr Cohort)	Actual Reporting Day 1						Actual Reporting Day 2					
		08/03/2017			08/08/2018			08/04/2017			08/09/2018		
		Regular Ed	Reg Ed	SPED	Total	Reg Ed	SPED	Total	Reg Ed	SPED	Total	Reg Ed	SPED
Carver*	398	358		358	405		405	359	2	361	413		413
Joyner	392	371	5	376	373	4	377	383	5	388	378	4	382
Parkway	460	409	10	419	403	8	411	424	10	434	408	8	416
Thomas	369	346	7	353	345	8	353	354	8	362	351	7	358
Gr K-2	1619	1484	22	1506	1526	20	1546	1520	25	1545	1550	19	1569
Lawhon*	372	352	10	362	363	8	371	353	9	362	376	9	385
Lawndale	410	380	7	387	413	9	422	390	7	397	425	10	435
Pierce	331	324		324	352		352	324		324	342	6	348
Rankin	393	402	4	406	363		363	405	4	409	382		382
Gr 3-5	1506	1458	21	1479	1491	17	1508	1472	20	1492	1525	25	1550
Milam Gr 6	534	446	14	460	480	12	492	475	16	491	494	13	507
TMS Gr 7-8	970	987	14	1001	925	15	940	947	18	965	960	13	973
THS Gr 9-12	1936	1835	36	1871	1808	37	1845	1888	36	1924	1836	36	1872
Total K-12	6565	6210	107	6317	6230	101	6331	6302	115	6417	6365	106	6471
ECEC		115	23	138	125	16	141	132	24	156	125	15	140
Total PreK-12	6565	6325	130	6455	6355	117	6472	6434	139	6573	6490	121	6611

*Lawhon grade 2 counted at Carver

Opening Enrollment Raw Data Comparison
Projected Enrollment 2018-2019 and Daily Reports for 2017-2018 and 2018-2019

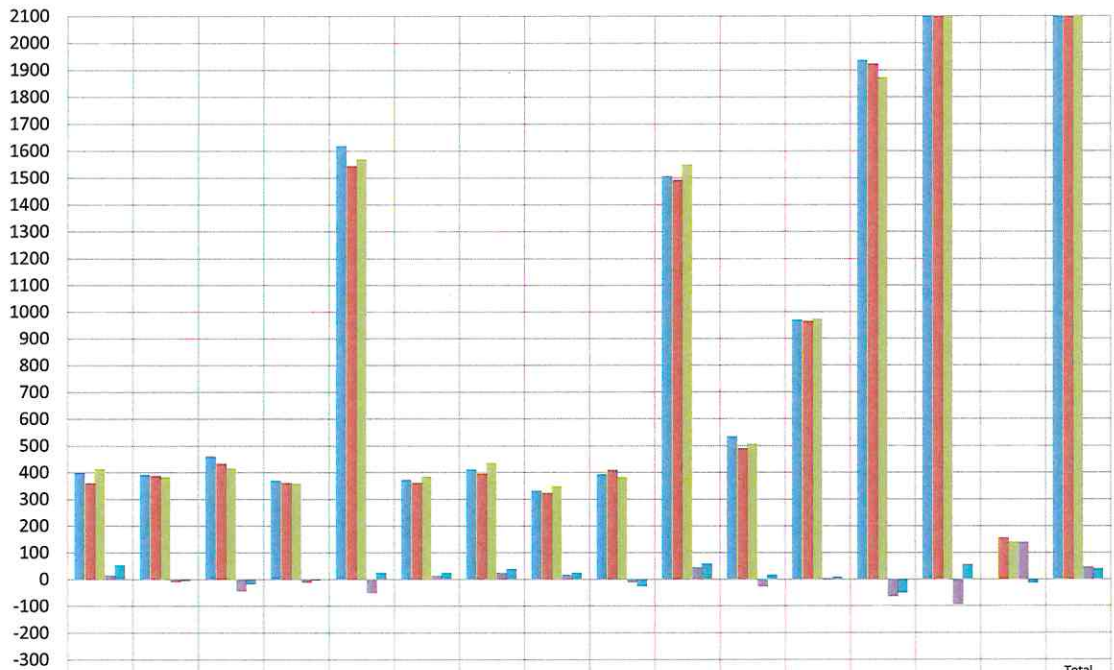
School	2018-2019 Projected Enrollment**	Day 1 8/3/17	Day 1 8/8/18	+/- Projections vs 8/8/18 Enrollment	+/- Enrollment 8/3/17 vs 8/8/18	Day 2 8/4/17	Day 2 8/9/18	+/- Projections vs 8/9/18 Enrollment	+/- Enrollment 8/4/17 vs 8/9/18
Carver	398	358	405	7	47	361	413	15	52
Joyner	392	376	377	-15	1	388	382	-10	-6
Parkway	460	419	411	-49	-8	434	416	-44	-18
Thomas	369	353	353	-16	0	362	358	-11	-4
Gr K-2	1619	1506	1546	-73	40	1545	1569	-50	24
Lawhon*	372	362	371	-1	9	362	385	13	23
Lawndale	410	387	422	12	35	397	435	25	38
Pierce	331	324	352	21	28	324	348	17	24
Rankin	393	406	363	-30	-43	409	382	-11	-27
Gr 3-5	1506	1479	1508	2	29	1492	1550	44	58
Milam	534	460	492	-42	32	491	507	-27	16
TMS	970	1001	940	-30	-61	965	973	3	8
THS	1936	1871	1845	-91	-26	1924	1872	-64	-52
K-12	6565	6317	6331	-234	14	6417	6471	-94	54
ECEC		138	141	141	3	156	140	140	-16
Total PreK-12	6565	6455	6472	-93	17	6573	6611	46	38

*Lawhon grade 2 counted at Carver

Projections and Comparisons 8-2018-Summary Data

Enrollment Comparison - 2018/2019 Projections, Day 2 2017/2018 and Day 2 2018/2019

*Lawhon Gr 2 counted at Carver



	Carver	Joyner	Parkway	Thomas	Gr K-2	Lawhon*	Lawndale	Pierce	Rankin	Gr 3-5	Milam	TMS	THS	K-12	ECEC	Total PreK-12
■ 2018-2019 Projected Enrollment**	398	392	460	369	1619	372	410	331	393	1506	534	970	1936	6565		6565
■ Day 2 8/4/17	361	388	434	362	1545	362	397	324	409	1492	491	965	1924	6417	156	6573
■ Day 2 8/9/18	413	382	416	358	1569	385	435	348	382	1550	507	973	1872	6471	140	6611
■ +/- Projections vs 8/9/18 Enrollment	15	-10	-44	-11	-50	13	25	17	-11	44	-27	3	-64	-94	140	46
■ +/- Enrollment 8/4/17 vs 8/9/18	52	-6	-18	-4	24	23	38	24	-27	58	16	8	-52	54	-16	38