



# UNITED INDEPENDENT SCHOOL DISTRICT AGENDA ACTION ITEM

**TOPIC:** Approval of Proposed Boundary Changes for School Year 2011-2012

**SUBMITTED BY:** Mike Garza **OF:** Executive Director of Support Services

**APPROVED FOR TRANSMITTAL TO SCHOOL BOARD:** \_\_\_\_\_

**DATE ASSIGNED FOR BOARD CONSIDERATION:** March 23, 2011

**RECOMMENDATION:** Administration is recommending that the Board approve the Proposed Boundary changes for the school year 2011-2012 as presented for Col. Santos Elem., Clark Elem., Nye Elem., Newman Elem., Fasken Elem., Kazen Elem. and Finley Elem.

**RATIONALE:** To inform the board on potential boundary changes. The boundary changes are being proposed to provide efficient use of the district facilities.

## BUDGETARY INFORMATION

N/A

## BOARD POLICY REFERENCE AND COMPLIANCE

N/A



**PROPOSED BOUNDARIES**





# About UISD

- Currently addressing the significant loss funding that the District stands to lose as result of the \$26.8 Billion state deficit.
- Although we have not received the definite amount, all indications are that we will see millions in substantial loss funding.
- Boundary changes will allow the District's campuses to reach their fullest space potential.
- Boundary changes can reduce costs throughout the District.



# About UISD

- Fast Growth District
- 41,853 Students (a growth of 947 from last year)
- Campus Totals
  - 27 Elementary
  - 10 Middle
  - 4 High School
  - 1 Alternative School





# UISD Peak Enrollment Analysis (1991-2010)

YEAR	ENROLLMENT	STUDENT GROWTH	PERCENTAGE GROWTH
1991-1992	13,922		
1992-1993	15,499	1,577	11.3%
1993-1994	17,124	1,625	10.5%
1994-1995	18,543	1,419	8.3%
1995-1996	19,777	1,234	6.7%
1996-1997	21,332	1,555	7.9%
1997-1998	22,830	1,498	7.0%
1998-1999	24,186	1,356	5.9%
1999-2000	25,681	1,495	6.2%
2000-2001	27,854	2,173	8.5%
2001-2002	29,370	1,516	5.4%
2002-2003	30,710	1,340	4.6%
2003-2004	32,234	1,524	5.0%
2004-2005	33,911	1,677	5.2%
2005-2006	35,674	1,763	5.2%
2006-2007	37,826	2,152	6.0%
2007-2008	38,973	1,147	3.0%
2008-2009	40,104	1,131	2.9%
2009-2010	40,906	802	2.0%
2010-2011*	41,853	947	2.3%

\* Enrollment as of Sept. 21, 2010

**Proposed New Boundary for  
Col. Santos to Newman  
Elementary**

## **Proposed New School Attendance Boundary for 2011-2012 School Year.**

### **Newman Elementary School**

- The Boundary will now include Jacaman Road (East of the 1400 Block of Jacaman & McPherson Rd. to include Jacaman Ranch Condominiums, North Village Apartments, and Summerwind Subdivision.



**Streets from Summerwind Subdivision, North Village  
Apartments and Jacaman Ranch Condominiums to  
be included within the Newman Elementary**

**Boundary**

**(Streets )**

1. North Bartlett Avenue ( North of the 2600<sup>th</sup> block )
2. Jacaman Road ( East of the 1400<sup>th</sup> block of Jacaman & McPherson to the end of Summerwind Subd )
3. North Beach Lane
4. Summerwind Blvd
5. Sun Ray Loop
6. Sand Dollar Ct
7. Suntan Ct.

# Proposed Breakdown for Col. Santos to Newman

Schools Affected	Projected Enrollment 2011-2012	New Boundary Change Impact	Adjusted Enrollment
Col. Santos	932	-48	884
Newman	563	48	611

Col. Santos to Newman proposed boundary change [map.pdf](#)

# **Proposed New Boundary for Perez to Prada Elementary**



# **Proposed New School Attendance Boundary for 2011-2012 School Year.**

## **Prada Elementary School:**

- The Boundary will now include Mangana Hein Rd.  
(Las Presas area)

**Street to be included within the Prada Elementary  
School Boundary**

**(Street)**

**Mangana Hein Rd. (Las Presas area)**

# Proposed Breakdown for Perez to Prada

Schools Affected	Projected Enrollment 2011-2012	New Boundary Change Impact	Adjusted Enrollment
Perez	1061	-51	1010
Prada	797	51	848

Perez to Prada proposed boundary change [map.pdf](#)



# **Proposed New Boundary for Kazen to Finley Elementary**

# **Proposed New School Attendance Boundary for 2011-2012 School Year.**

## **Finley Elementary School**

- Students residing South of Quail Creek Road. (Except Quail Creek Apartments)

**Streets from Quail Creek Subdivision to  
be included within the Finley  
Elementary Boundary  
(Streets )**

- Quail Creek Road  
(South of Quail Creek Including Phase  
1-6 Residential Only )

# Proposed Breakdown for Kazen to Finley

Schools Affected	Projected Enrollment 2011-2012	New Boundary Change Impact	Adjusted Enrollment
Kazen	518	-13	505
Finley	551	13	564

Kazen to Finley proposed boundary change [map.pdf](#)



# **Proposed New Boundary for Fasken to Kazen Elementary**

**Proposed New School Attendance Boundary  
for 2011-2012 School Year.**

**Kazen Elementary School**

- The boundary will now include everything south of Big Bend Blvd. and all of Snake Dr.

**Streets from Deerfield Subdivision, to be included  
within the Kazen Elementary Boundary**

**(Streets )**

1. Albany Dr (South 10200 block)
2. Blitzen Dr (South of 10220 - 10200 block)
3. Buffalo Ct
4. Center Rd (only 5 houses)  
(10101–10103–10105–10107-10109)
5. Comet Dr (South of 10200 block)
6. Cupid Lane
7. Prancer Rd
8. Snake Dr

# Proposed Breakdown for Fasken to Kazen

Schools Affected	Projected Enrollment 2011-2012	New Boundary Change Impact	Adjusted Enrollment
Fasken	1061	-121	940
Kazen	518	121	639

Fasken to Kazen proposed boundary change [map.pdf](#)



# **Proposed New Boundary for Nye to Clark Elementary**

# **Proposed New School Attendance Boundary for 2011-2012 School Year.**

## **Clark Elementary School:**

- The Boundary will now include Mann Rd. and IH35, moving west to Riverside Rd. then the Boundary moves South to Calton Rd. East to IH35.

**Streets from Tesoro Plaza Subdivision,  
to be included within the Clark Elementary Boundary**

**(Streets )**

1. Tesoro Lane
2. Tesoro Plaza

# Proposed Breakdown for Nye to Clark Elementary

Schools Affected	Projected Enrollment 2011-2012	New Boundary Change Impact	Adjusted Enrollment
Nye Elem	884	-18	866
Clark Elem	548	18	566

Nye to Clark proposed boundary change [map.pdf](#)



# **Proposed New Boundary for United Middle to Clark Middle School**

# **Proposed New School Attendance Boundary for 2011-2012 School Year.**

## **Clark Middle School:**

- The Boundary will now include Mann Rd. and IH35, moving west to Riverside Rd. then the Boundary moves South to Calton Rd. east to IH35.
- The Boundary will include Jacaman Road (East of the 1400 Block of Jacaman & McPherson Rd. to include Jacaman Condominiums, North Village Apartments, and Summerwind Subdivision.

**Streets from Summerwind Subdivision, North Village Apartments and Jacaman Ranch Condominiums to be included within the Clark Middle Boundary**

1. North Bartlett Avenue (North of the 2600<sup>th</sup> block )
2. Jacaman Road (East of the 1400<sup>th</sup> block of Jacaman & McPherson to the end of Summerwind Subd)
3. North Beach Lane
4. Summerwind Blvd
5. Sun Ray Loop
6. Suntan Ct.
7. Sand Dollar Ct

**Streets from Mann Rd. area to be included within the Clark Middle Boundary**

1. Tesoro Lane
2. Tesoro Plaza
3. Penn St.
4. Island Ave.
5. Riverside Dr.
6. Justo Penn St.
7. Calton Rd.
8. Walton Blvd.
9. Mann Cir.
10. South St.
11. Old Santa Maria (South of the block)
12. Mann Rd. (West of the block)

# Proposed Breakdown for United Middle to Clark Middle

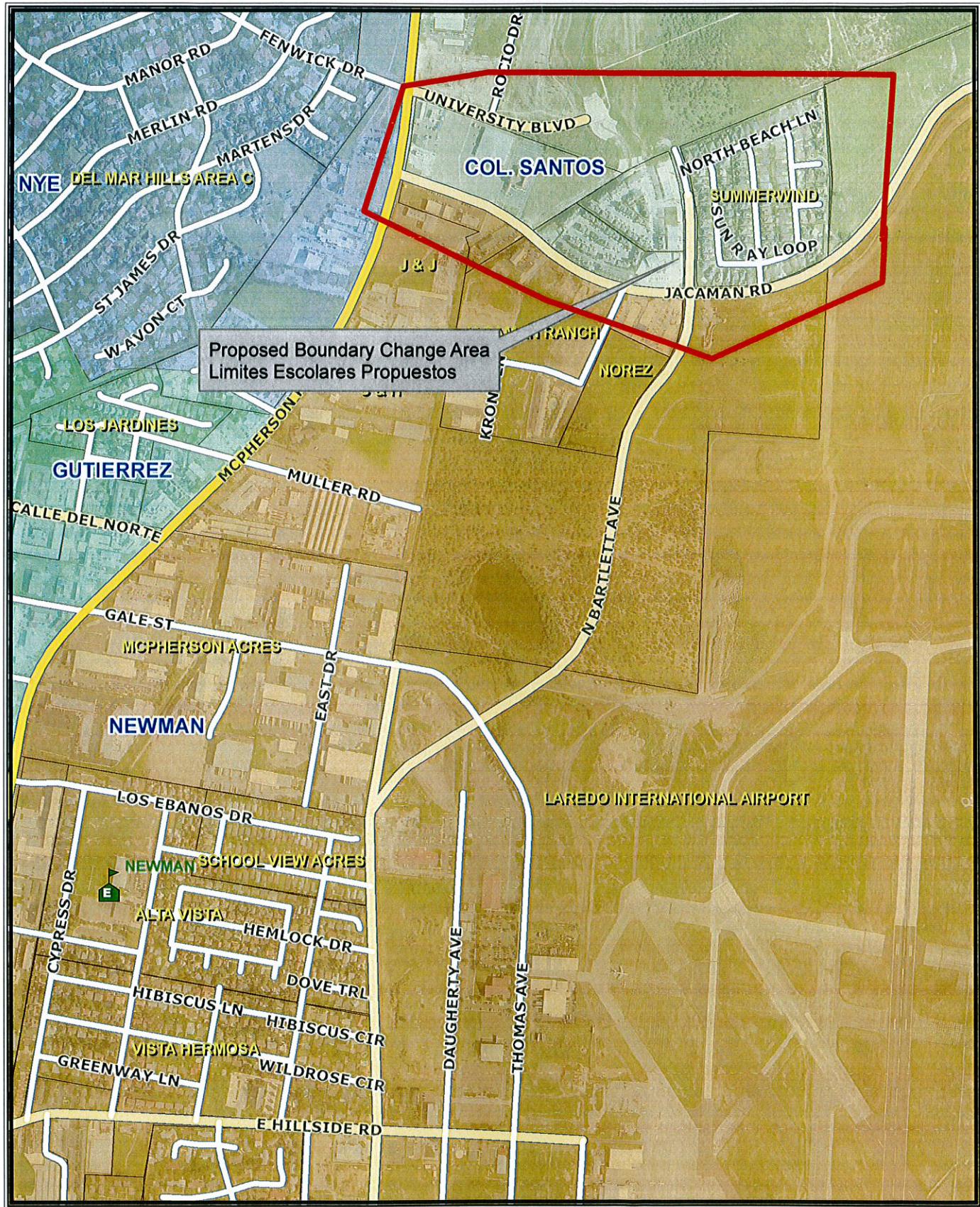
Schools Affected	Projected Enrollment 2011-2012	New Boundary Change Impact	Adjusted Enrollment
United Middle	1059	Summerwind -11 Mann Rd -1	1047
Clark Middle	833	12	845

\* 6<sup>th</sup> & 7<sup>th</sup> graders will not be affected

United to Clark Middle proposed boundary change [map.pdf](#)



# 2011-2012 Boundary Change for Col. Santos to Newman



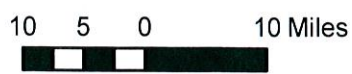
Proposed Boundary Change Area  
 Limites Escolares Propuestos



## UNITED INDEPENDENT SCHOOL DISTRICT

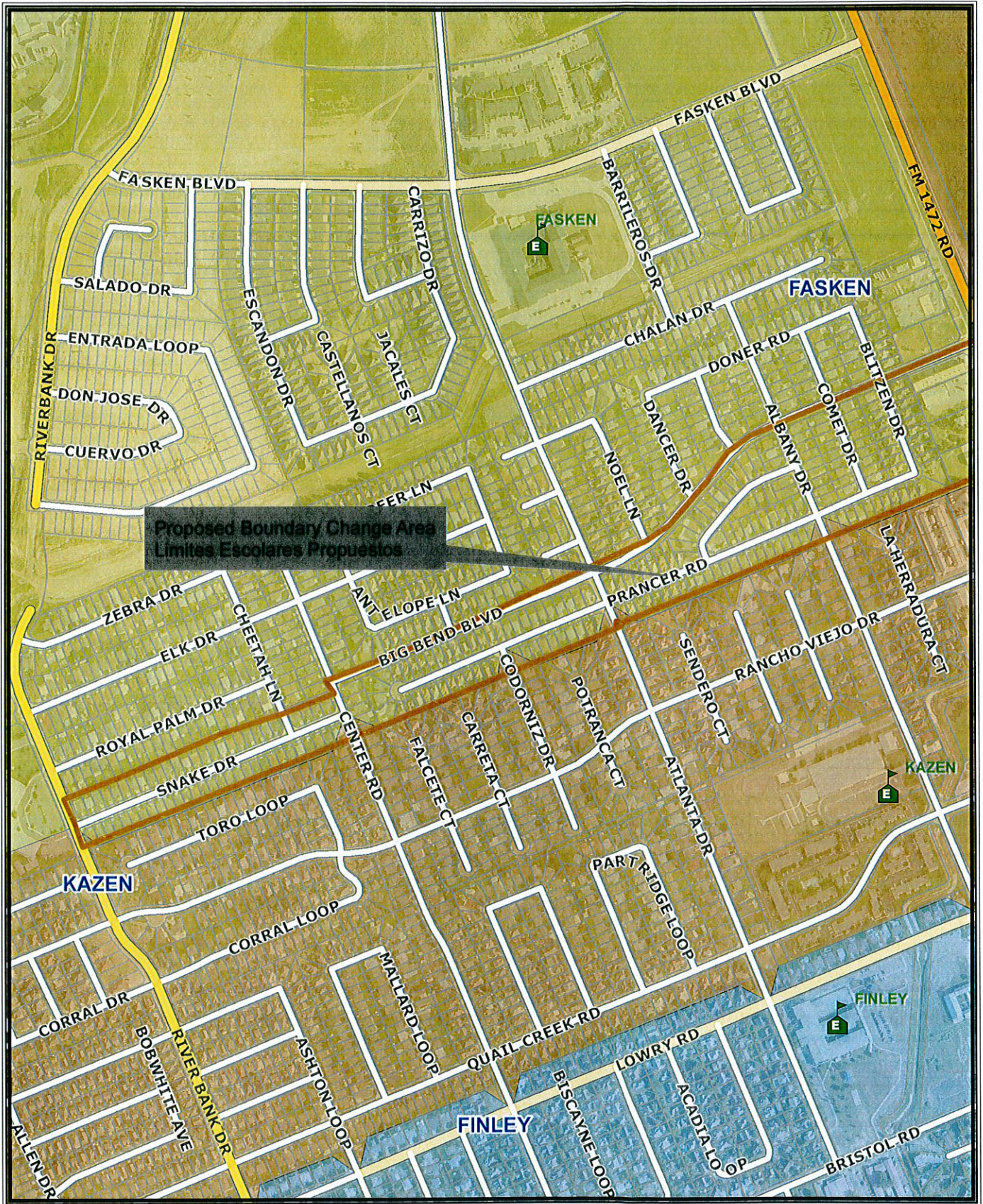


This agency is not responsible for the misinterpretation of this map.  
 This map does not meet national map accuracy standards and  
 should not be used for engineering purposes.





# 2011-2012 Boundary Change for Fasken to Kazen Elementary



## UNITED INDEPENDENT SCHOOL DISTRICT

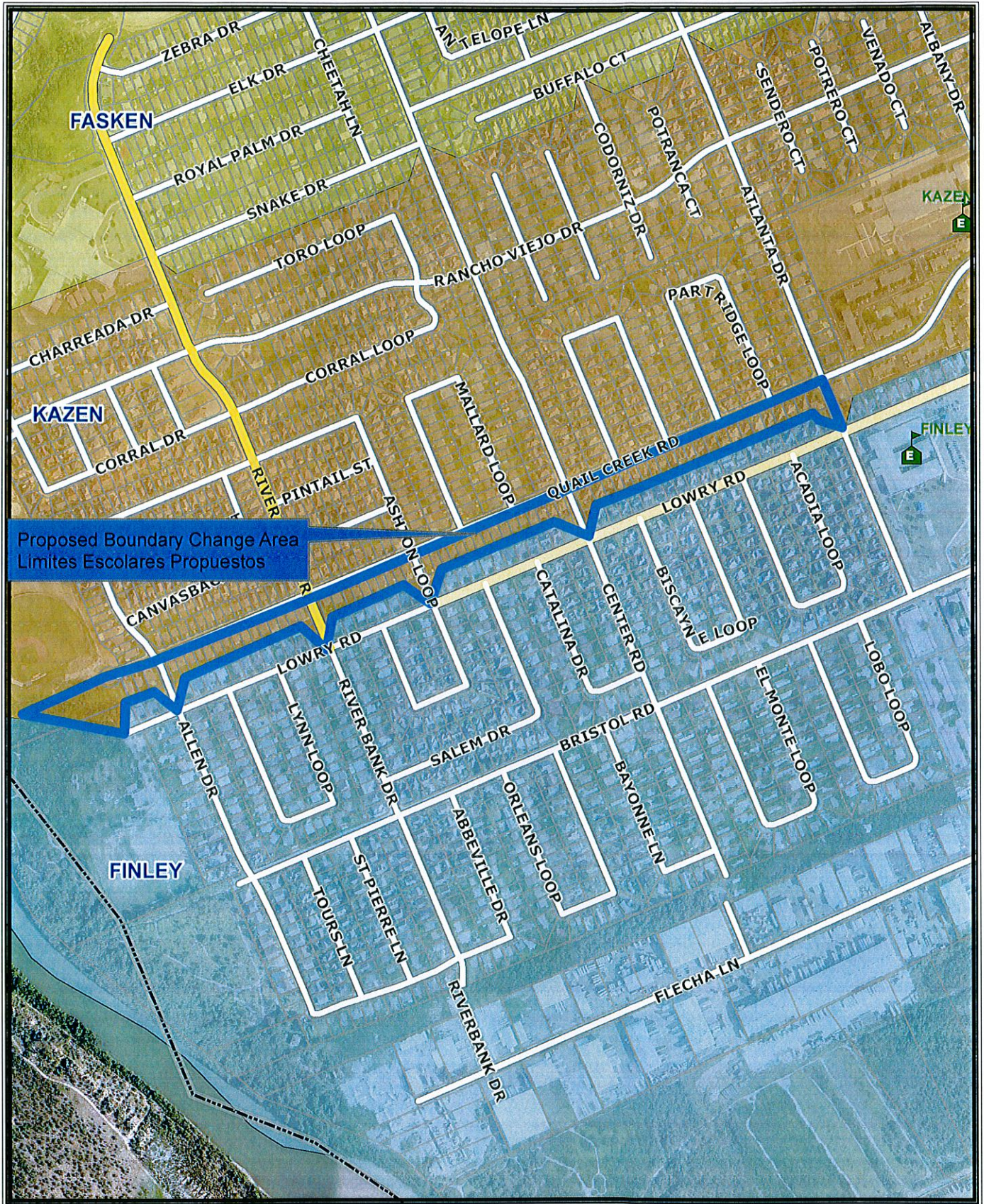


This agency is not responsible for the misinterpretation of this map.  
This map does not meet national map accuracy standards and  
should not be used for engineering purposes.





# 2011-2012 Boundary Change for Kazen to Finley Elementary



**UNITED INDEPENDENT SCHOOL DISTRICT**

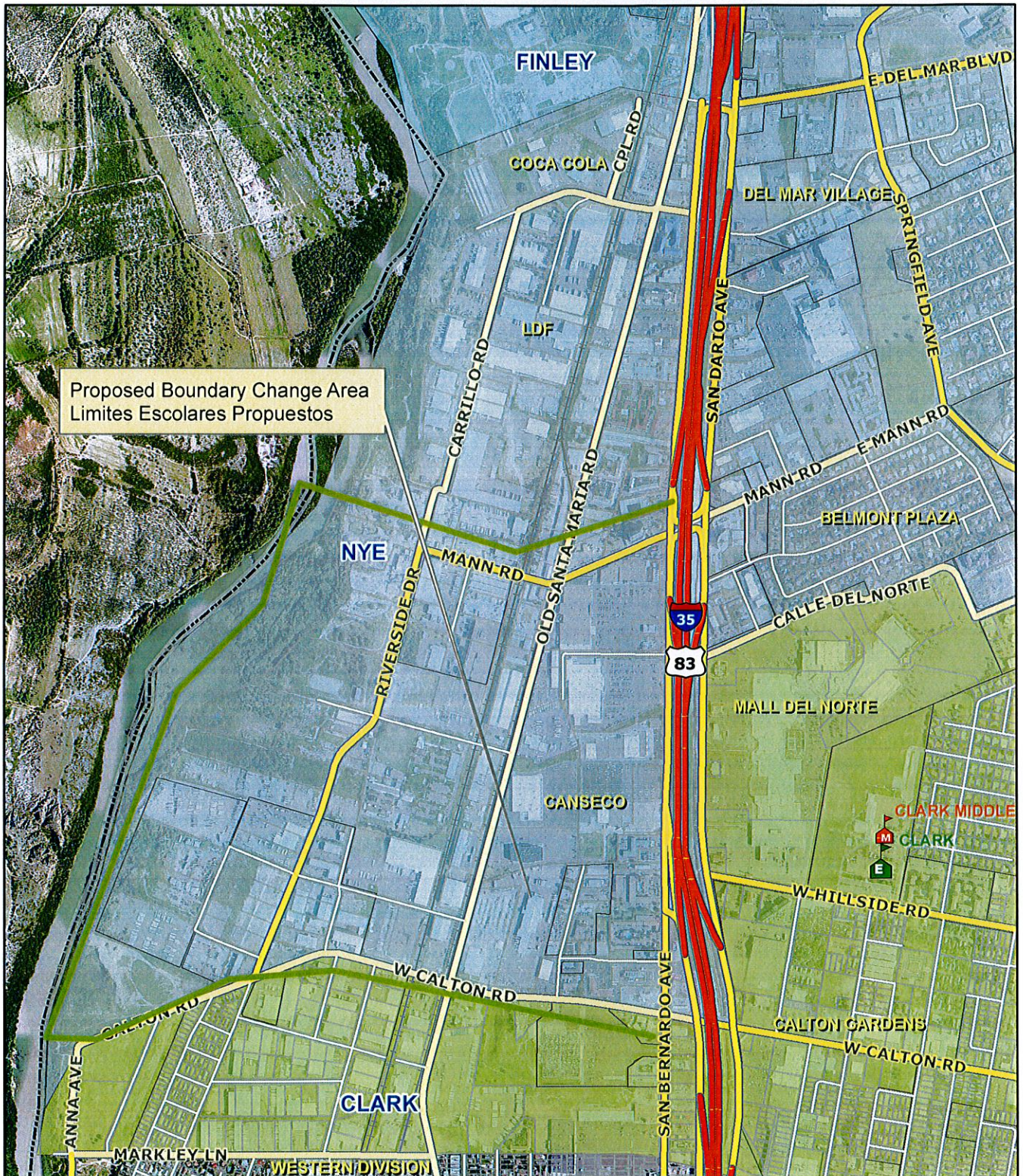


This agency is not responsible for the misinterpretation of this map.  
This map does not meet national map accuracy standards and  
should not be used for engineering purposes.

10 5 0 10 Miles



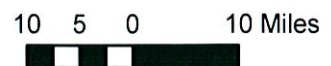
# Boundary Change from Nye to Clark Elementary



## UNITED INDEPENDENT SCHOOL DISTRICT

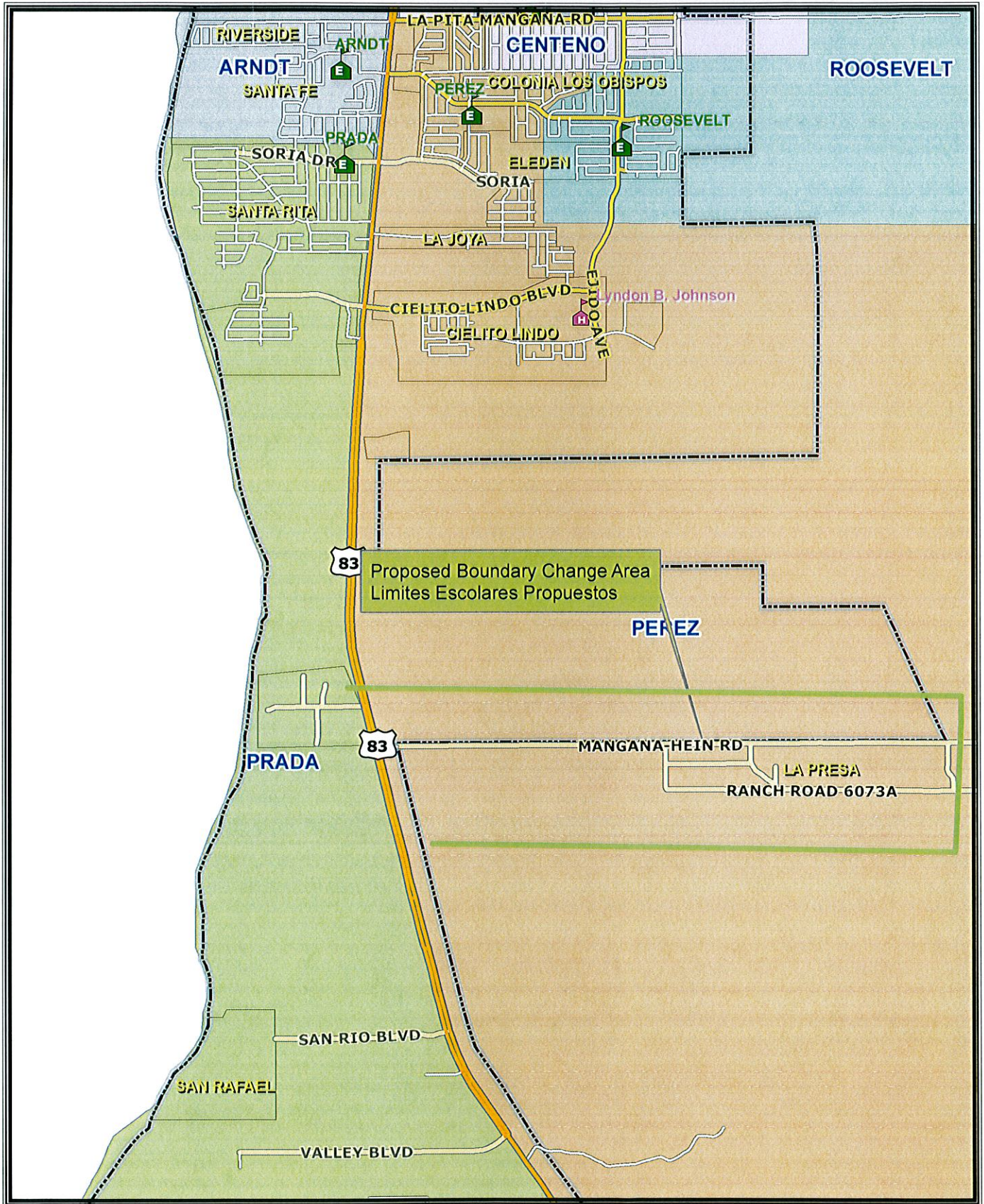


This agency is not responsible for the misinterpretation of this map.  
This map does not meet national map accuracy standards and  
should not be used for engineering purposes.





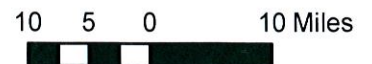
# 2011-2012 Boundary Change for Perez to Prada Elementary



## UNITED INDEPENDENT SCHOOL DISTRICT

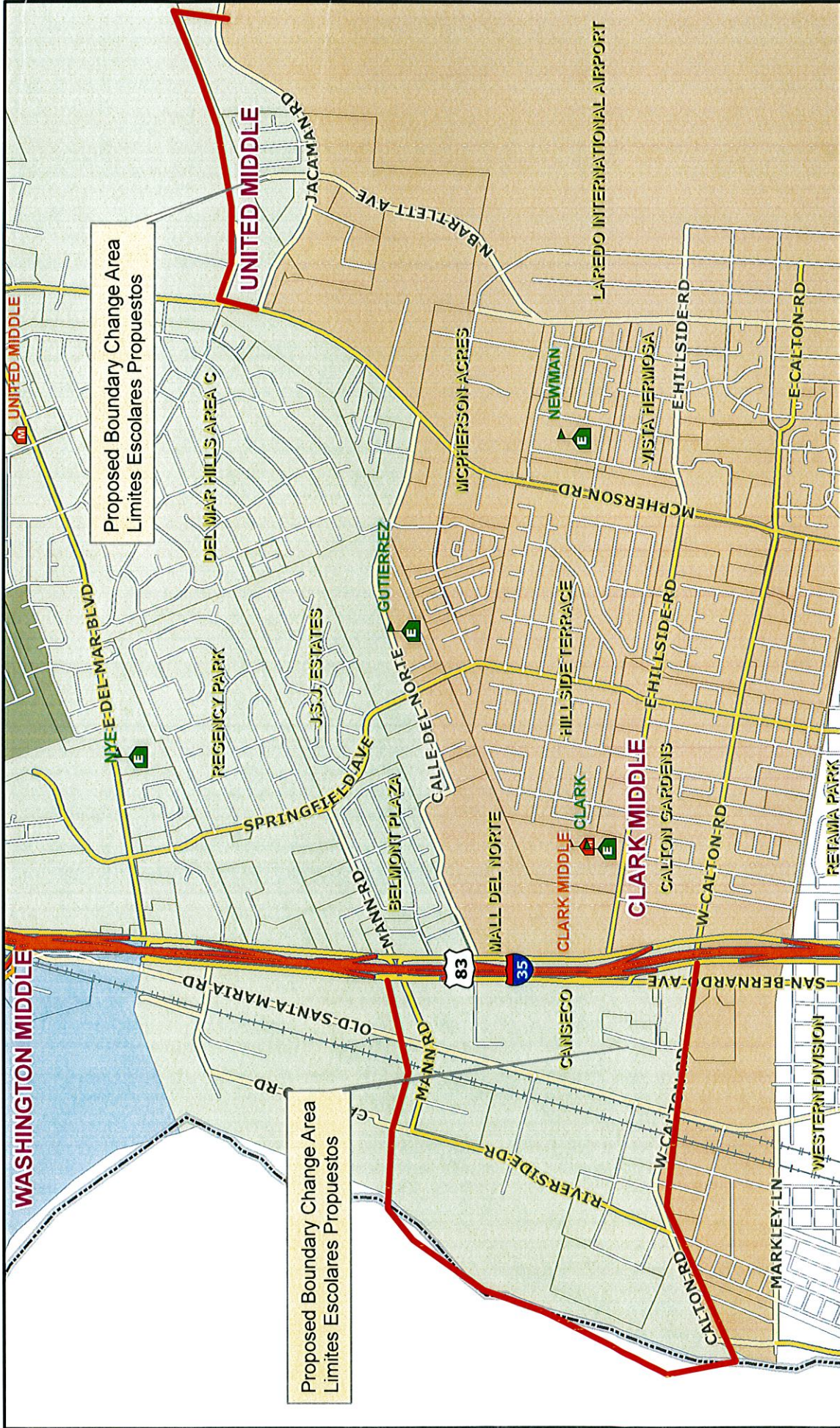


This agency is not responsible for the misinterpretation of this map.  
 This map does not meet national map accuracy standards and  
 should not be used for engineering purposes.





# Boundary Change for United Middle to Clark Middle



**UNITED ISD**



This agency is not responsible for the misinterpretation of this map. This map does not meet national map accuracy standards and should not be used for engineering purposes.