



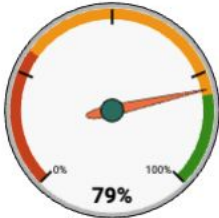
# UNITY SCHOOL DISTRICT

Finance Report - September 2025  
November 10, 2025 Board Meeting

## Unity School District Budget Dashboard - 2025/2026 - Month Ending October 31, 2025

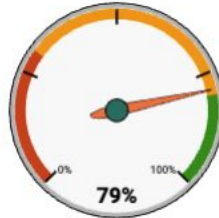
% of the School Year Complete 34%

### TOTAL DISTRICT



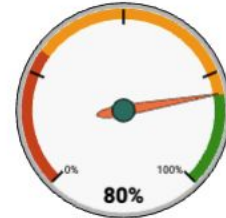
BUDGET	\$25,074,122	
SPENDING	\$ 5,341,321	21%
AVAILABLE	\$19,732,801	79%

### FUND 10 Total (General)



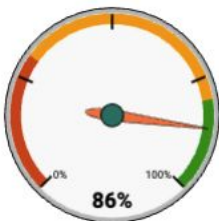
BUDGET	\$17,008,275	
SPENDING	\$ 3,609,343	21%
AVAILABLE	\$13,398,932	79%

### FUND 27 Total (Special Education)



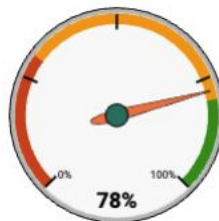
BUDGET	\$3,385,247	
SPENDING	\$ 686,815	20%
AVAILABLE	\$2,698,432	80%

### FUND 29 Total (Native American)



BUDGET	\$ 21,000	
SPENDING	\$ 2,884	14%
AVAILABLE	\$ 18,116	86%

### FUND 38 & 39 Total (Debt)



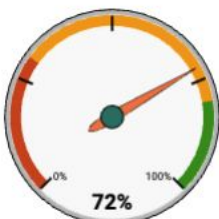
BUDGET	\$ 2,032,940	
SPENDING	\$ 448,946	22%
AVAILABLE	\$ 1,583,994	78%

### FUND 50 Total (Food Service)



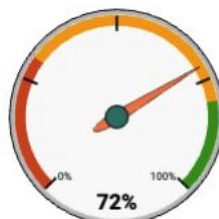
BUDGET	\$ 827,327	
SPENDING	\$ 174,071	21%
AVAILABLE	\$ 653,256	79%

### FUND 80 TO 86 Total (Community Ed)



BUDGET	\$ 1,353,967	
SPENDING	\$ 376,979	28%
AVAILABLE	\$ 976,988	72%

### FUND 21 Total (Student Activities)



BUDGET	\$ 149,811	
SPENDING	\$ 42,283	28%
AVAILABLE	\$ 107,528	72%

### FUND 73 Total (EE Trust)



BUDGET	\$ 295,555	
SPENDING	\$ 0	0%
AVAILABLE	\$ 295,555	100%

### October Notables:

- Emily Measner and Adela Jensen have passed ServSafe Certifications.
- Business Office Transitions are ongoing with additional efficiencies.
- Audit has been completed and the final report has been received.
- Tax Levy Certifications have been sent to the municipalities.



# UNITY SCHOOL DISTRICT

**October 31, 2025**  
**UNITY SCHOOL DISTRICT**  
**ALL FUNDS**  
**PROOF OF CASH**

BANK ACCOUNT	BALANCE June 30, 2025	DEPOSITS/ RECEIPTS	WITHDRAWALS/ DISBURSEMENTS	BALANCE July 31, 2025
Pillar Bank - 4034 General Checking	\$ 0.00	\$ 752,965.95	\$ 752,965.95	\$ 0.00
Pillar Bank - 3781 Sweep	2,624,313.50	\$ 169,537.22	\$ 1,312,144.81	1,481,705.91
Pillar Bank - 9458 Debt Service	1,456.40	\$ 5.38	\$ -	1,461.78
LGIP - #1 - Debt Service	55,320.71	\$ 198.10	\$ -	55,518.81
LGIP - #2 - General	2,103.59	\$ 7.53	\$ -	2,111.12
Midwest Institutional Trust - OPEB Fund 73	446,939.32	\$ 1,622.66	\$ 460.74	448,101.24
Bremer - 0907 Cap Imprvmt Money Market Premier	10,034.10	\$ 34.64	\$ 55.33	10,013.41
Bremer Bank - 3-20-7 Capital Improvement Sweep	479,284.25	\$ 3,361.33	\$ -	482,645.58
Pillar Bank - 3863 ES Activity	14,690.97	\$ 1,674.12	\$ 2,643.39	13,721.70
Pillar Bank - 8579 MS Activity	39,537.11	\$ 146.13	\$ -	39,683.24
Pillar Bank - 3894 HS Activity	95,948.21	\$ 27,281.44	\$ 21,677.33	101,552.32
Pillar Bank - 7068 Scholarship Milltown CC	40,953.14	\$ -	\$ -	40,953.14
Pillar Bank- 1817 Scholarship Lumsden	38,171.95	\$ -	\$ -	38,171.95
Pillar Bank - 2643 Scholarship Amery Farmers	17,800.23	\$ -	\$ -	17,800.23
Pillar Bank - 7799 Scholarship Checking	118,566.74	\$ 438.21	\$ -	119,004.95
Pillar Bank - 1217 Scholarship G Melby Am Legion	17,321.85	\$ -	\$ -	17,321.85
	\$ 4,002,442.07	\$ 957,272.71	\$ 2,089,947.55	\$ 2,869,767.23

**Proof of Cash - Rolling 13 Months - October 2025**

