

Granby Public Schools Enrollment Projections Report Executive Summary

February 2026

Contents

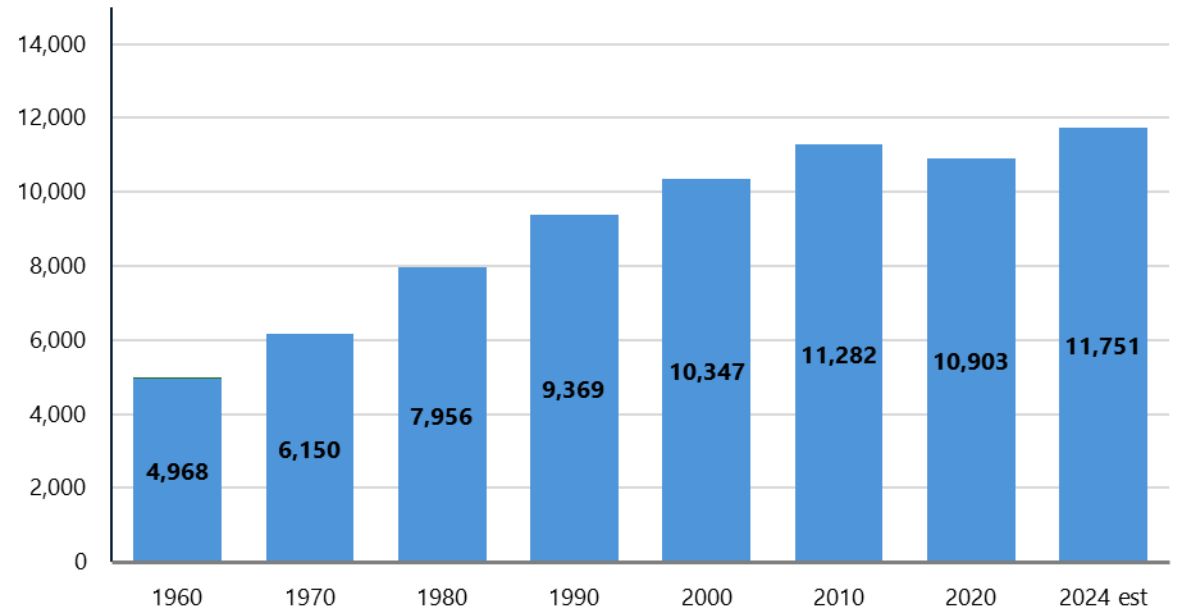
- Enrollment Drivers Summary
- Enrollment Trends
- Enrollment Projections
- Appendix A: Low, Medium, and High Districtwide Projections

Enrollment Drivers

Enrollment Drivers: Demographics

- **Granby's population is increasing.** After decreasing between 2010 and 2020, Granby's population has increased modestly since 2020, adding about 850 residents (7.7%)
- **Granby's population is aging.** Granby has seen the fastest growth in the population age 55-years old and over while the population between 35 and 54 has decreased.
- **Births have increased slowly since 2014.** 2023 saw the largest birth cohort in over 15 years, and this cohort will enter kindergarten in 2028.

Town of Granby Total Population: 1920 to 2024 (est)

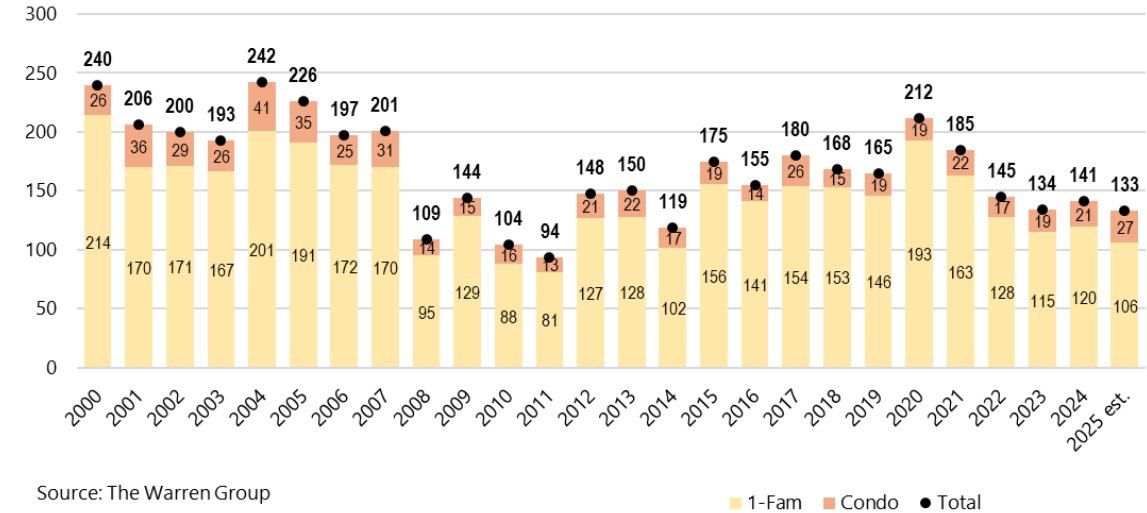


Source: Decennial Census 1920-2020.
CTDPH 2024 population estimates

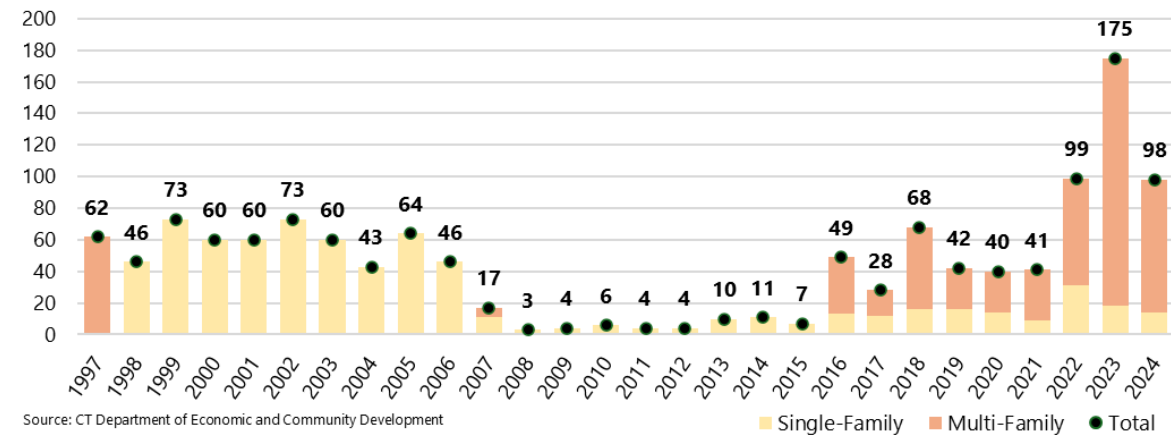
Enrollment Drivers: Housing

- **Housing turnover has slowed.** After experiencing an increase in sales in 2020 and 2021, home sales have slowed over the last four years and remain well-below pre-pandemic levels. High prices, mortgage interest rates, and low inventory are all contributing to the current housing market.
- **Strong multi-family permit activity.** Multi-family permit activity has been elevated since 2016 with the completion of several large developments such as Greenway Village (34 units), The Grand (205 units), and Station 280 (235 units).
- **Modest single-family permit activity.** Granby has averaged about 15 new single-family homes annually over the last ten years.

Granby Home Sale Trends: 2000 to 2025 YTD



Granby Housing Permits: 2005 to 2024



Recently Built and Future Housing

Development Name	Type	Total Units	K-5 Enrollment (2025-26)	K-5 Students per Unit	K-12 Enrollment (2025-26)	K-12 Students per Unit
Station 280	Apartments	235	9	0.04	19	0.08
The Grand	Mix of Unit Types	205	15	0.07	35	0.17
Greenway Village	Townhomes	34	1	0.03	2	0.06
Harness Way	Subdivision	24	7	0.29	10	0.42

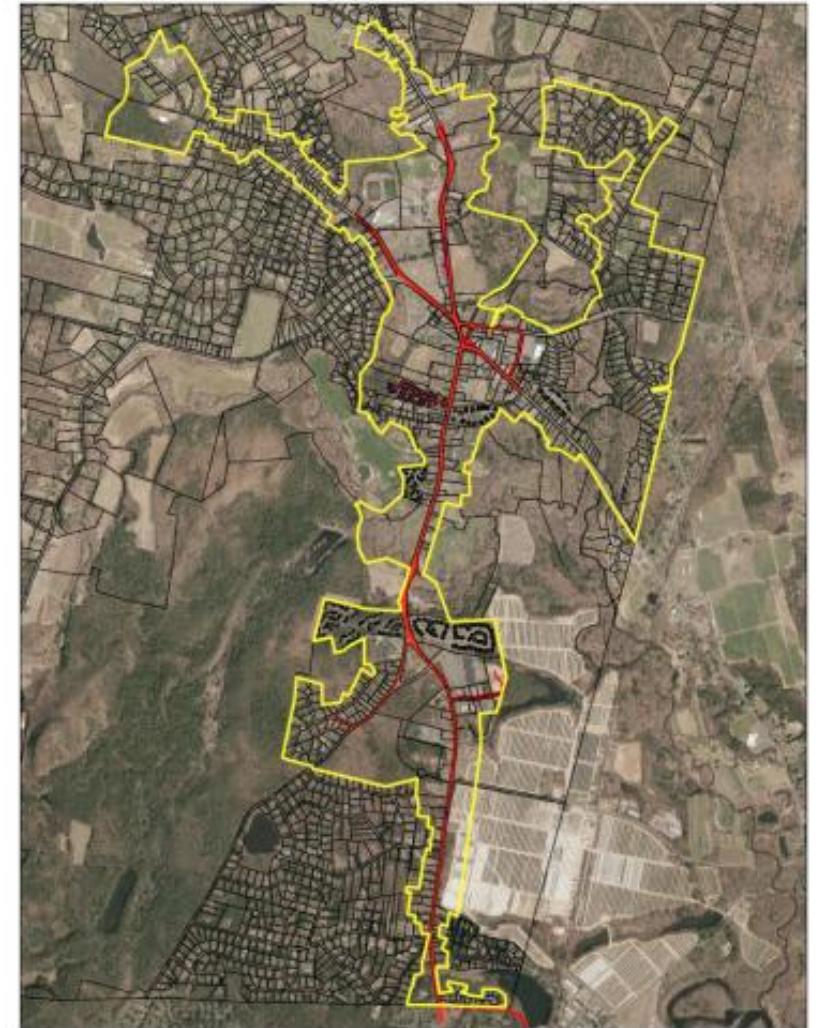
Source: Town of Granby Community Development Department. Enrollment information based off the 2025-26 PSIS from GPS. Only includes larger development projects.

- Over the last decade, Granby has added nearly 500 apartment and townhome housing units.
- Multi-family developments tend to produce fewer students per unit compared to townhomes and single-family homes.
- As of 10/1/2025:
 - Station 280 Apartments has 19 K-12 students across 235 units (0.08 students per unit).
 - The Grand, which contains a mix of townhomes, single-family homes, and apartments, has 35 K-12 students across 205 units (0.17 students per unit).
 - Greenway Village townhomes has just 2 K-12 students across 34 units (0.06 students per unit)
 - The Harness Way subdivision currently has 10 K-12 students across 24 units (0.42 students per unit).
- Two small subdivisions are approved and not yet built, totaling 18 units, in line with recent pace of single-family development.

Town Plan Review

- Plan of Conservation and Development (POCD) updated in 2016, with a plan update underway.
 - POCD envisions that Granby remains predominantly single-family homes, with some opportunities for multi-family housing in the Town Center.
- Town's Affordable Housing Plan was adopted in 2022. The Plan notes challenges to including the lack of developable land and limited public water and sewer service infrastructure. AHP recommendations include examining changes to the regulations for multi-family housing, and modest expansions of public infrastructure.
- Sanitary sewer and public water service are currently limited to the Town Center area and the Route 202 corridor between the Town Center and Simsbury town line.
 - All recently built multi-family housing developments are located in areas served by water and sewer infrastructure.

Sewer Service Location Map:

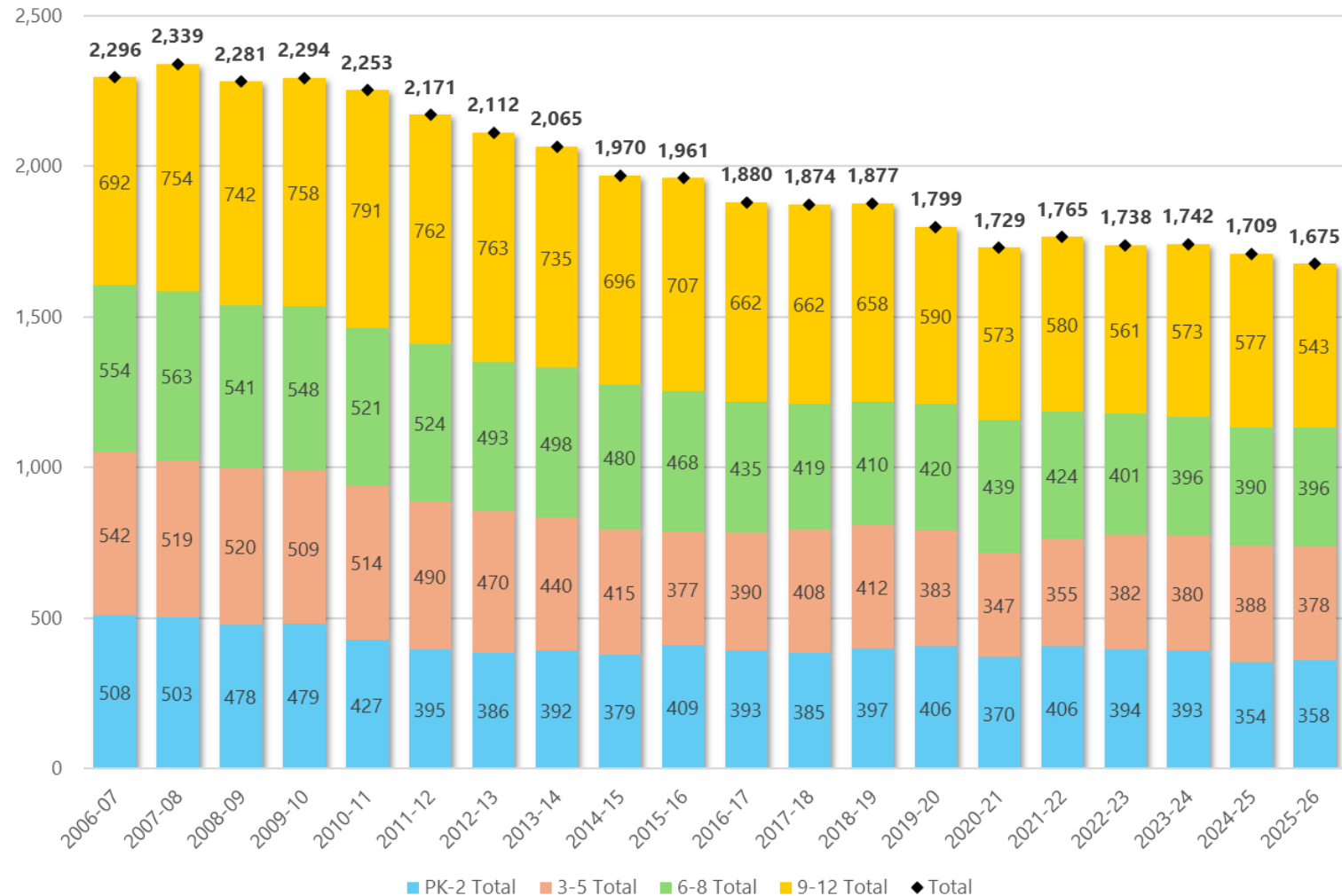


Enrollment Trends

Historic Enrollment Trends

- Districtwide PK-12 enrollment peaked in 2007-08 at 2,339 students.
- As of 2025-26, PK-12 enrollment was 1,675 students, a decrease of 664 students or 28% since the 2007-08 peak.
- Since 2020-21:
 - Primary School enrollment (PK-2nd) decreased by 3%.
 - Intermediate School (3rd-5th) enrollment decreased by 9%.
 - Middle School (6th-8th) enrollment decreased by 10%.
 - High School (9th-12th) decreased by 5%.

Granby Public Schools Historic Enrollments, 2001-02 to 2025-26



Historic Enrollment Trends

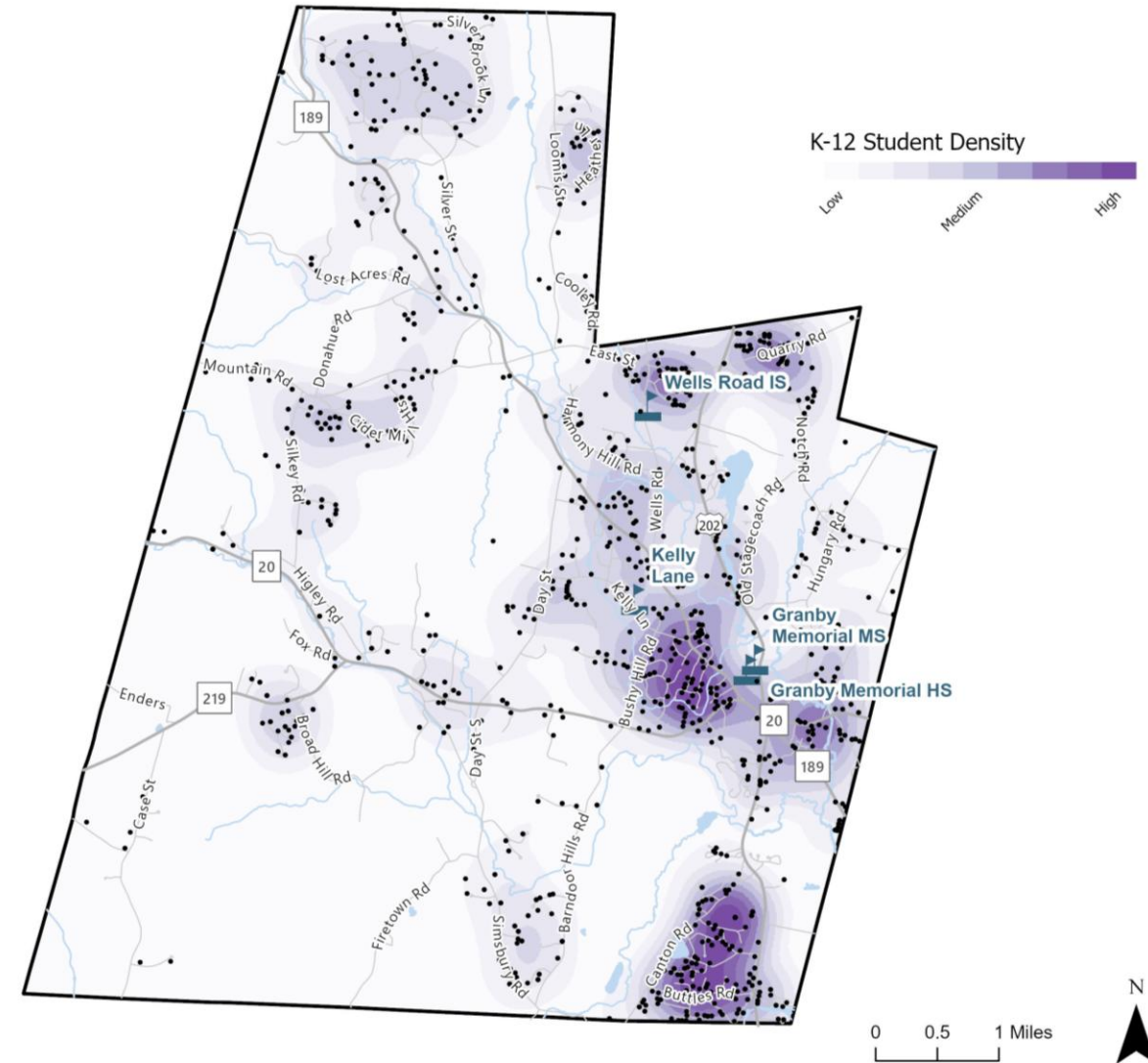
Granby Public School Enrollment History Kindergarten through 12th Grade													
School Year	K	1	2	3	4	5	6	7	8	9	10	11	12
2006-07	172	168	155	186	171	185	184	190	180	170	164	203	155
2007-08	149	176	165	159	199	161	188	190	185	196	179	169	210
2008-09	143	154	168	166	157	197	161	192	188	190	200	178	174
2009-10	152	150	165	171	171	167	194	160	194	192	188	194	184
2010-11	110	154	153	167	173	174	166	195	160	207	197	191	196
2011-12	111	125	153	153	167	170	166	164	194	163	209	197	193
2012-13	113	129	124	151	151	168	162	167	164	198	162	207	196
2013-14	109	118	133	132	154	154	165	165	168	166	197	164	208
2014-15	122	114	116	130	130	155	148	163	169	175	157	195	169
2015-16	110	132	128	121	131	125	156	153	159	177	172	160	198
2016-17	93	112	143	129	127	134	128	153	154	163	177	163	159
2017-18	119	102	121	144	131	133	136	128	155	161	161	177	163
2018-19	113	133	105	121	154	137	138	142	130	164	153	162	179
2019-20	121	111	128	101	123	159	137	143	140	123	161	146	160
2020-21	106	118	111	127	102	118	154	141	144	140	122	160	151
2021-22	125	118	123	113	133	109	123	161	140	148	148	125	159
2022-23	99	131	123	127	115	140	117	126	158	140	149	142	130
2023-24	129	102	128	126	132	122	146	122	128	146	137	146	144
2024-25	83	123	103	134	128	126	126	141	123	133	156	136	152
2025-26	111	93	119	109	137	132	126	130	140	120	130	150	143

Source: CT State Department of Education: 2006-07 to 2024-25. Granby Public Schools 2025-26

- Large kindergarten cohorts entered in 2019-20, 2021-22, and 2023-24.
- Smaller kindergarten cohorts entered in 2022-23 and 2024-25.

K-12 Student Distribution

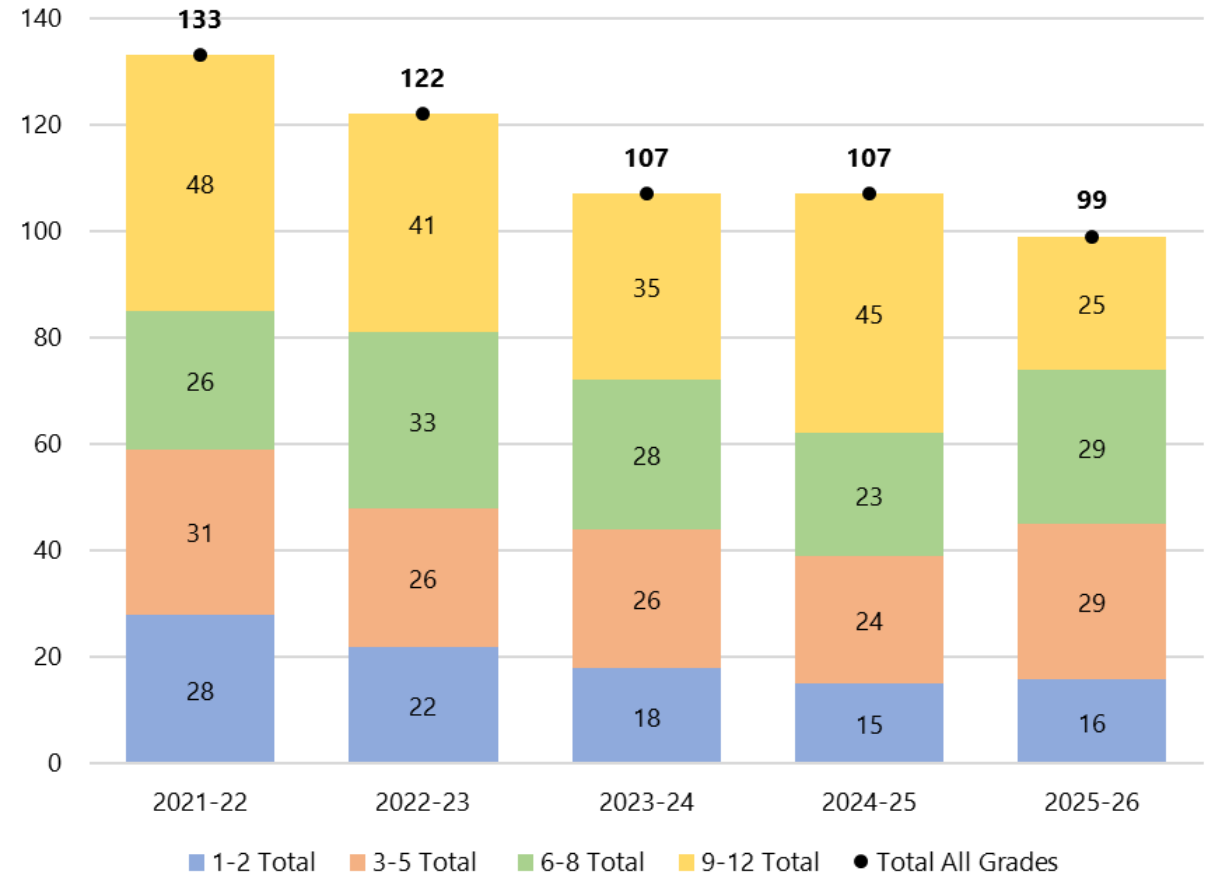
- K-12 student distribution largely reflects community development patterns, with the highest number of students in the neighborhoods surrounding Granby Center and along the Route 202 corridor in the southeastern part of the community.
- In addition, GPS accommodates non-resident students through open choice and tuition programs.
- As of the 2025-26 school year:
 - 101 Hartford resident students attend Granby Public Schools through the Open Choice program.
 - Granby Memorial High School (GMHS) is a designated high school for Hartland residents. 27 Hartland resident students attend GMHS.



New-to-District Student Analysis

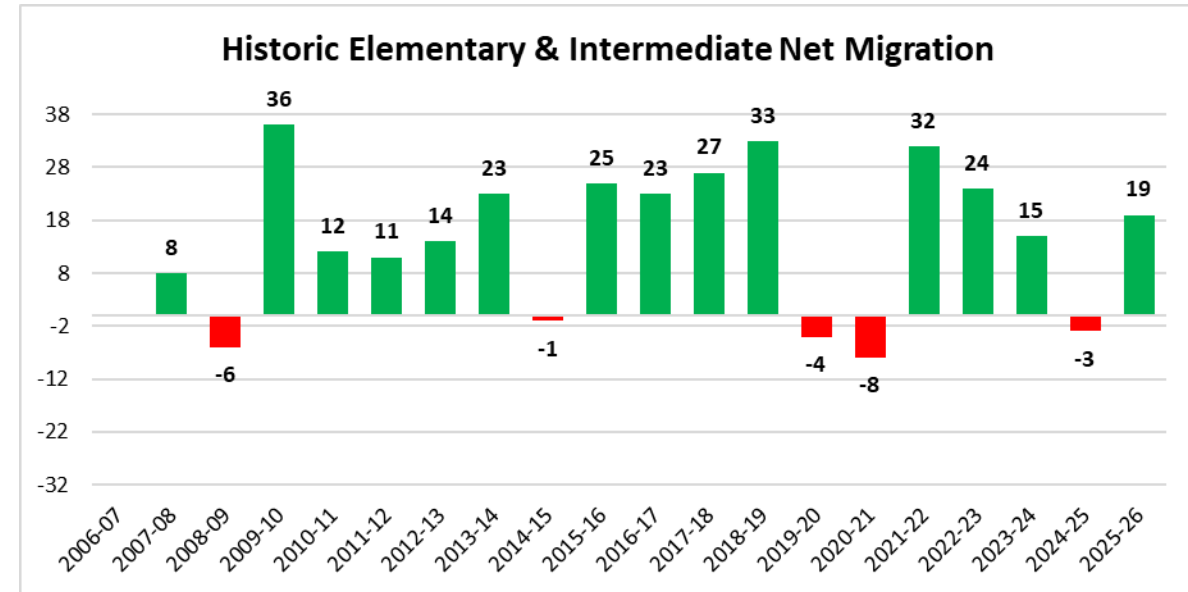
- New-to-District (NTD) students are identified by student ID (SASIDs) that were not in the prior year's enrollment database.
- NTD student trends closely mirror home sale trends, with the highest levels seen in 2021-22 and declining levels over the last four years.
- For 2025-26, GPS saw just 99 NTD students, the lowest number over the last five years.
- Since 2021-22:
 - The primary (PK-2) grades (-43%) and high school (-48%) grades saw the greatest decline in NTD students.
 - NTD students in the intermediate school grades decreased slightly by about 6%.
 - The middle school grades have been very stable, with 2025-26 NTD student levels slightly exceeding those of 2021-22.

NTD Students, by Grade Grouping



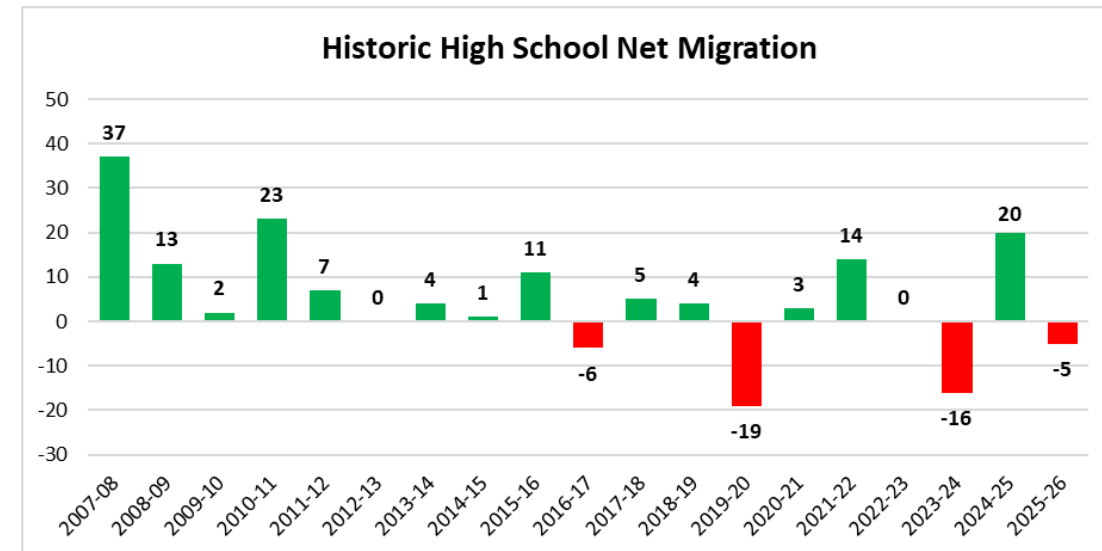
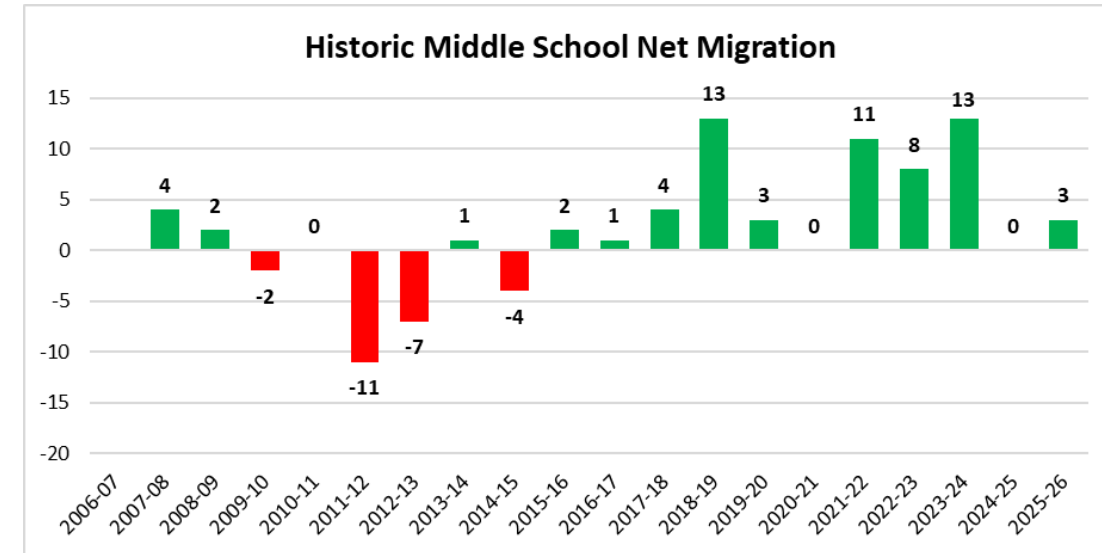
Net Migration

- Net migration accounts for both NTD students as well as student withdrawals.
- At the primary and intermediate school grades (K-2 and 3-5), GPS typically sees a moderate net in-migration, averaging +16 students over the last decade.
- Net migration for 205-26 is slightly above the recent historic average.



Net Migration

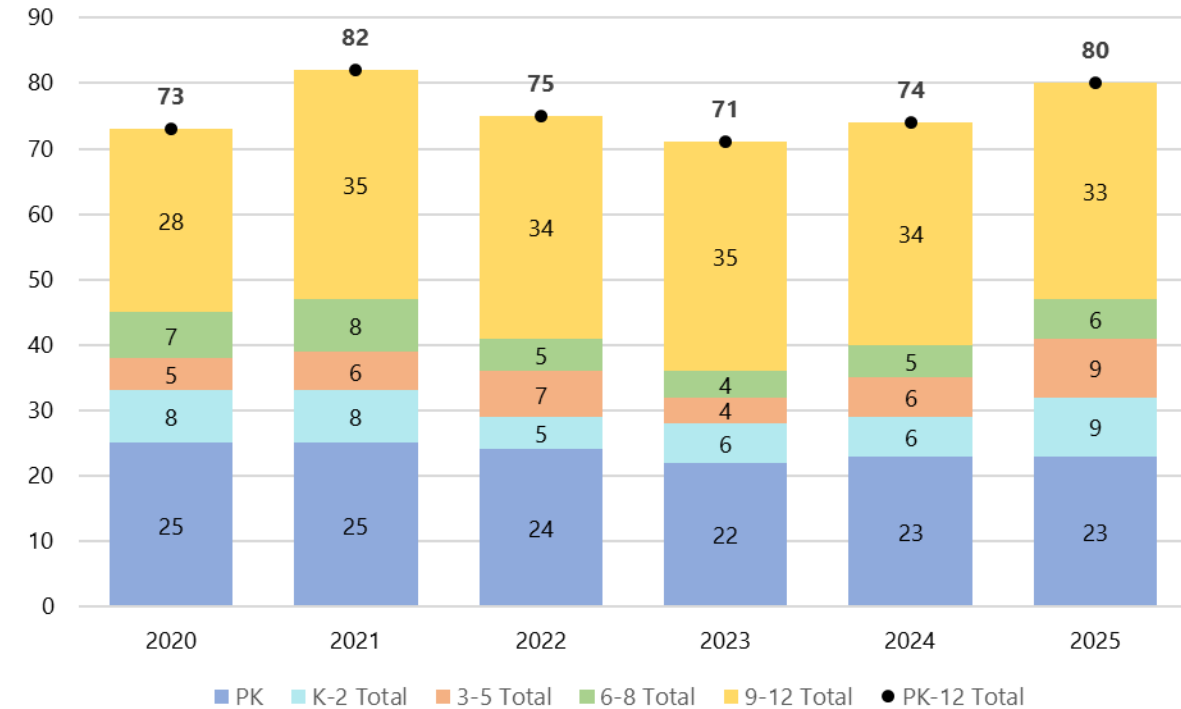
- The Middle School (6th-8th) historically saw net out-migration but has averaged a modest net in-migration of +6 students over the last decade. 2025-26 migration is trending slightly below the long-term average.
- High School (9th-12th) has averaged no net-migration over the last decade, although there is significant variability year-over-year. For 2025-26 GPS saw slight net out-migration of -5 students, marking the fourth time in 10 years where the district saw out-migration.



Other Public School Enrollment Trends

- The number of Granby resident students enrolled in other public schools has been relatively consistent over the last six years, averaging 76 students.
- The high school see the largest number of resident students enrolling in other public schools, averaging 33 students annually.
 - Suffield High School (Vo-Ag Program) and Oliver Wolcott Technical High School are the most common destinations for Granby resident students.
- Pre-K students also commonly enroll in other public schools. On average, 24 Granby resident Pre-K students attend other public schools (primarily Wintonbury Early Childhood Magnet School)
- The primary, intermediate, and middle school grades see the fewest students enrolling in other public schools, averaging less than 2 students per grade annually.

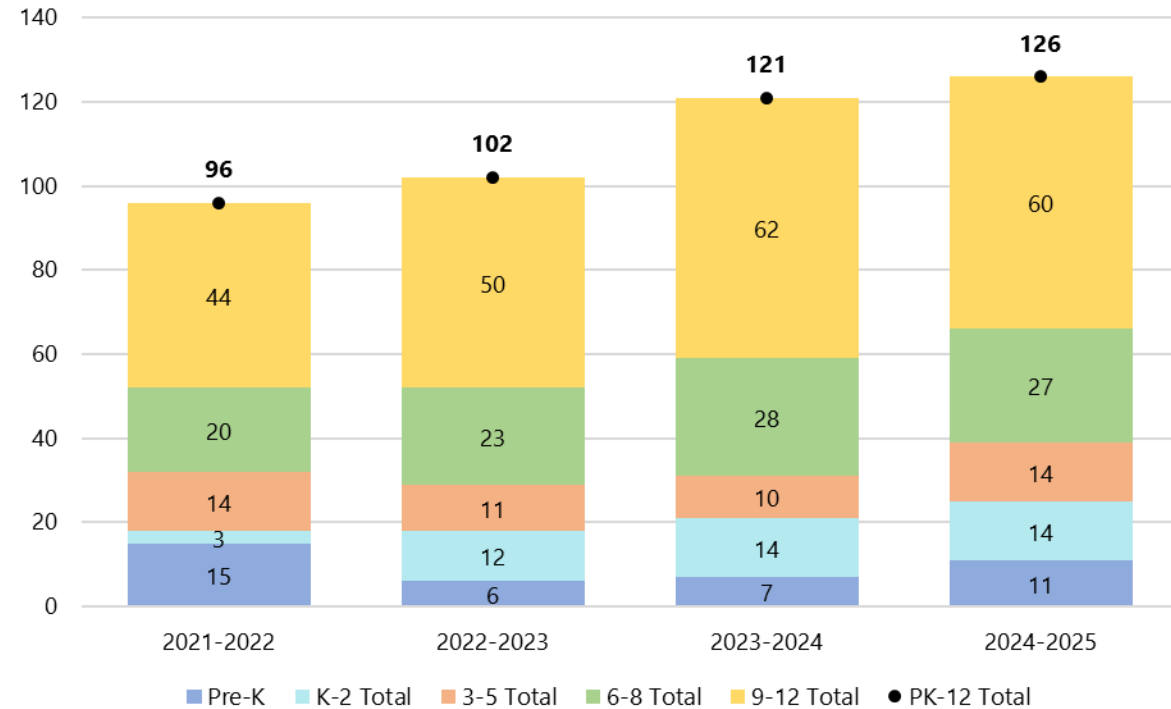
**Granby Residents Attending Other Public Schools:
2020-21 to 2025-26**



Private School Enrollment Trends

- Modest increase in the number of Granby resident students attending private schools between 2021-22 and 2024-25.
- The largest increase was in the high school grades (+16), followed by the primary grades (K-2), which increased by 11 students, and the middle school grades (+7).
- As of 2024-25, the most common private school destinations were:
 - St. Mary's Simsbury (PK-8) – 22 students
 - The Master's School (PK-12) – 22 students
 - Northwest Catholic (9-12) – 15 students
 - Westminster School (9-12) – 10 students

**Granby Residents Attending Non-Public Schools:
2021-22 to 2024-25**



Source: Granby Public Schools

Note that data for 2025-26 is not yet available

Enrollment Projections



Projections Primer

- Based on Cohort Survival Methodology – Standard method accepted by OGA (formerly OSCG&R) for school construction projects
- The cohort survival methodology **relies on observed data from the recent past in order to project the near future**
- Persistency Ratios calculated from historic enrollment data to determine growth or loss in a class as it progresses through the school system
- Persistency Ratio of 1.0 means cohort size remains the same; 1.05 means the cohort size increases by 5%, or a cohort of 100 grows to 105 the following year
- Persistency Ratios account for the various external factors affecting enrollments: housing characteristics, residential development, economic conditions, student transfers in and out of system, and student mobility
- Changes in population, housing stock and tenure, and economic conditions help explain persistency ratios
- Changes in programming affect persistency ratios of individual schools
- Recent changes to Kindergarten entry age adds uncertainty to Kindergarten enrollment until trends are established.

Persistence Ratios

- Abnormally low Birth-K ratio in 2024-25 linked to the change in kindergarten entry age.
- Estimate of migration compares students in grades 2-8 with the same cohort in grades 1-7 the year prior.
- GPS has seen strong net migration since 2015-16, with the pandemic impacted 2020-21 school year being the only year to experience out migration.
- After decreasing to 0.34% in 2024-25, the estimate of migration has rebounded to 1.36% for 2025-26.

Kindergarten through 12th Grade Persistence Ratios by School Year 2003-04 to 2025-26														
Year	Birth-K	K-1	1-2	2-3	3-4	4-5	5-6	6-7	7-8	8-9	9-10	10-11	11-12	Est. of Migration (1-7/2-8)
2007-08	1.3670	1.0233	0.9821	1.0258	1.0699	0.9415	1.0162	1.0326	0.9737	1.0889	1.0529	1.0305	1.0345	0.65%
2008-09	1.2544	1.0336	0.9545	1.0061	0.9874	0.9899	1.0000	1.0213	0.9895	1.0270	1.0204	0.9944	1.0296	-0.73%
2009-10	1.5050	1.0490	1.0714	1.0179	1.0301	1.0637	0.9848	0.9938	1.0104	1.0213	0.9895	0.9700	1.0337	2.26%
2010-11	1.0680	1.0132	1.0200	1.0121	1.0117	1.0175	0.9940	1.0052	1.0000	1.0670	1.0260	1.0160	1.0103	0.85%
2011-12	1.1327	1.1364	0.9935	1.0000	1.0000	0.9827	0.9540	0.9880	0.9949	1.0188	1.0097	1.0000	1.0105	-1.27%
2012-13	1.2989	1.1622	0.9920	0.9869	0.9869	1.0060	0.9529	1.0060	1.0000	1.0206	0.9939	0.9904	0.9949	-1.00%
2013-14	1.0381	1.0442	1.0310	1.0645	1.0199	1.0199	0.9821	1.0185	1.0060	1.0122	0.9949	1.0123	1.0048	1.81%
2014-15	1.3864	1.0459	0.9831	0.9774	0.9848	1.0065	0.9610	0.9879	1.0242	1.0417	0.9458	0.9898	1.0305	-0.98%
2015-16	1.5942	1.0820	1.1228	1.0431	1.0077	0.9615	1.0065	1.0338	0.9755	1.0473	0.9829	1.0191	1.0154	1.78%
2016-17	1.1772	1.0182	1.0833	1.0078	1.0496	1.0229	1.0240	0.9808	1.0065	1.0252	1.0000	0.9477	0.9938	2.33%
2017-18	1.4875	1.0968	1.0804	1.0070	1.0155	1.0472	1.0149	1.0000	1.0131	1.0455	0.9877	1.0000	1.0000	2.38%
2018-19	1.9153	1.1176	1.0294	1.0000	1.0694	1.0458	1.0376	1.0441	1.0156	1.0581	0.9503	1.0062	1.0113	3.58%
2019-20	1.6575	0.9823	0.9624	0.9619	1.0165	1.0325	1.0000	1.0362	0.9859	0.9462	0.9817	0.9542	0.9877	0.11%
2020-21	1.2771	0.9752	1.0000	0.9922	1.0099	0.9593	0.9686	1.0292	1.0070	1.0000	0.9919	0.9938	1.0342	-0.55%
2021-22	1.6026	1.1132	1.0424	1.0180	1.0472	1.0686	1.0424	1.0455	0.9929	1.0278	1.0571	1.0246	0.9938	3.56%
2022-23	1.2073	1.0480	1.0424	1.0325	1.0177	1.0526	1.0734	1.0244	0.9814	1.0000	1.0068	0.9595	1.0400	2.95%
2023-24	1.5000	1.0303	0.9771	1.0244	1.0394	1.0609	1.0429	1.0427	1.0159	0.9241	0.9786	0.9799	1.0141	2.84%
2024-25	1.1370	0.9535	1.0098	1.0469	1.0159	0.9545	1.0328	0.9658	1.0082	1.0391	1.0685	0.9927	1.0411	0.34%
2025-26	1.6567	1.1205	0.9675	1.0583	1.0224	1.0313	1.0000	1.0317	0.9929	0.9756	0.9774	0.9615	1.0515	1.36%



Projections Assumptions

These projections are predicated on the following assumptions:

- Pre-K enrollment will remain at current levels at 35 students per year
- Housing, in-migration, and future birth assumptions at the districtwide level will prove accurate.
- Migration assumptions were lowered for the next two years to account for current housing market conditions.
- The number of Open Choice students remains stable.
- The number of students from Hartland attending GMHS remains stable.
- **High projections:** Assume high birth projections (average 96 annually) and housing sales will have a quicker return to pre-pandemic levels over the next 2-3 years. Student in-migration averages 2.3%, which is above the 10-year average (1.9%).
- **Medium projections:** Assume medium birth projections (average 90 annually), housing market slowly returns to pre-pandemic levels over the next 3-5 years. Student in-migration averages 1.8%, which aligns with 10-year historic average.
- **Low projections:** Assume low birth projections (average 84 annually) and housing activity remains slow and in-migration averages 1.2%, which is below historic average.

Kindergarten Caveats & Assumptions

Age as of September 1st of Kindergarten Year

School Year	4 Years Old	5 Years Old	6 Years Old	Total Kindergarten Enrollment	Share of 4 Year Olds
2020-21	18	83	5	106	17.0%
2021-22	27	94	4	125	21.6%
2022-23	21	75	3	99	21.2%
2023-24	25	103	1	129	19.4%
2024-25	10	70	3	83	12.0%
2025-26	10	99	2	111	9.0%
2020-21 to 2023-24 Average	23	89	3	115	19.8%

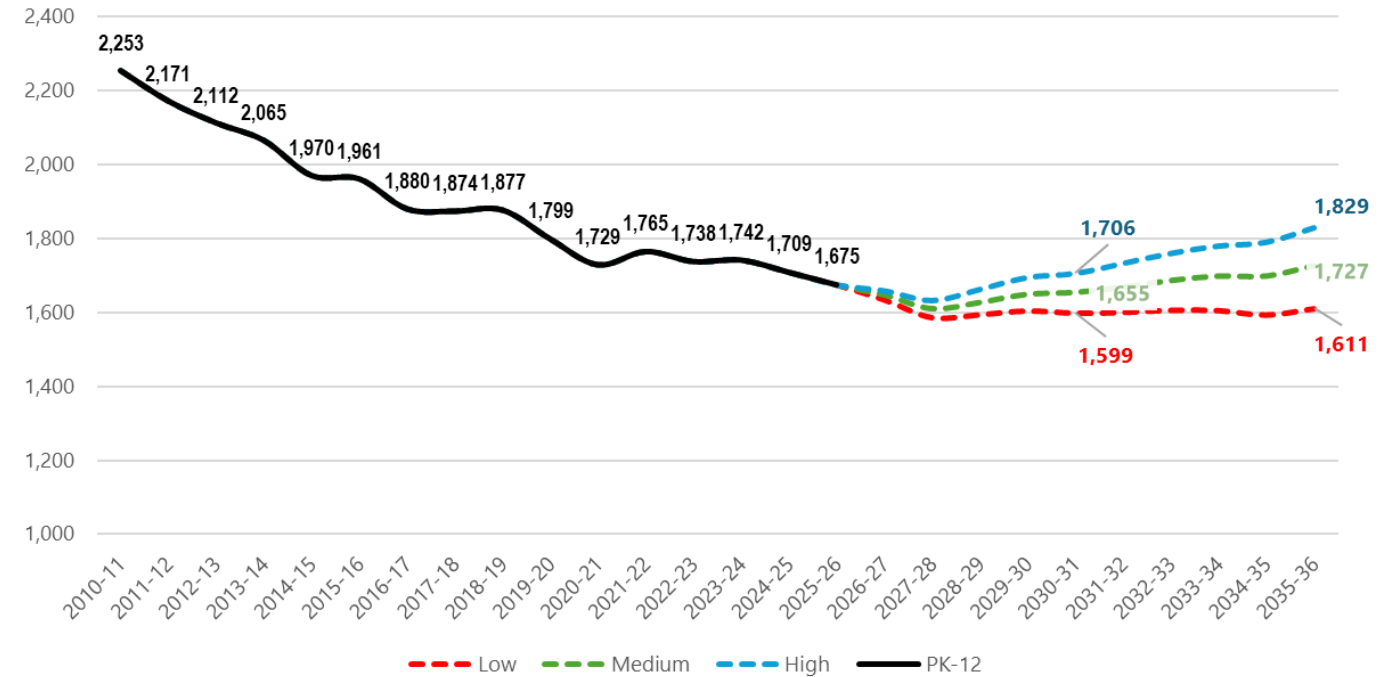
Per Public Act 23-208, Section 1(a) , beginning with the 2024-2025 school year, children need to turn 5 years old on or before September 1 in order to be automatically eligible for kindergarten.

- New Kindergarten entry date became effective for 2024-25 school year per state law.
 - Cutoff date shifted from January 1st to September 1st.
 - Students who turn 5 after September 1st can apply to enter kindergarten early via a waiver process, consisting of parental request and a readiness assessment.
- Over the last two years, the number of students kindergarteners who turn 5 after September 1st has been reduced by more than half.
- Enrollment projections assume a continuation of kindergarten entry age trends at 2025-26 levels.

Districtwide Projections: Model Comparison

- Three separate models were prepared, representing a range of possible outcomes.
- All three models show declining enrollment over the next two school years due to lower migration tied to housing market conditions.
- Over the final 8 years, the low model projects stable enrollment while the medium and high model show enrollment growth.
- By 2030-31, all three models have a range of ~110 students, with the range growing to about 220 students by 2035-36.
- Under the medium model, PK-12 averages 1,667 students over the next decade with a peak of 1,727 students in 2035-36.
- **Recent housing conditions, demographics and enrollment in-migration align best with Medium Model and represents the most likely direction. However, housing conditions and demographic shifts should be monitored.**

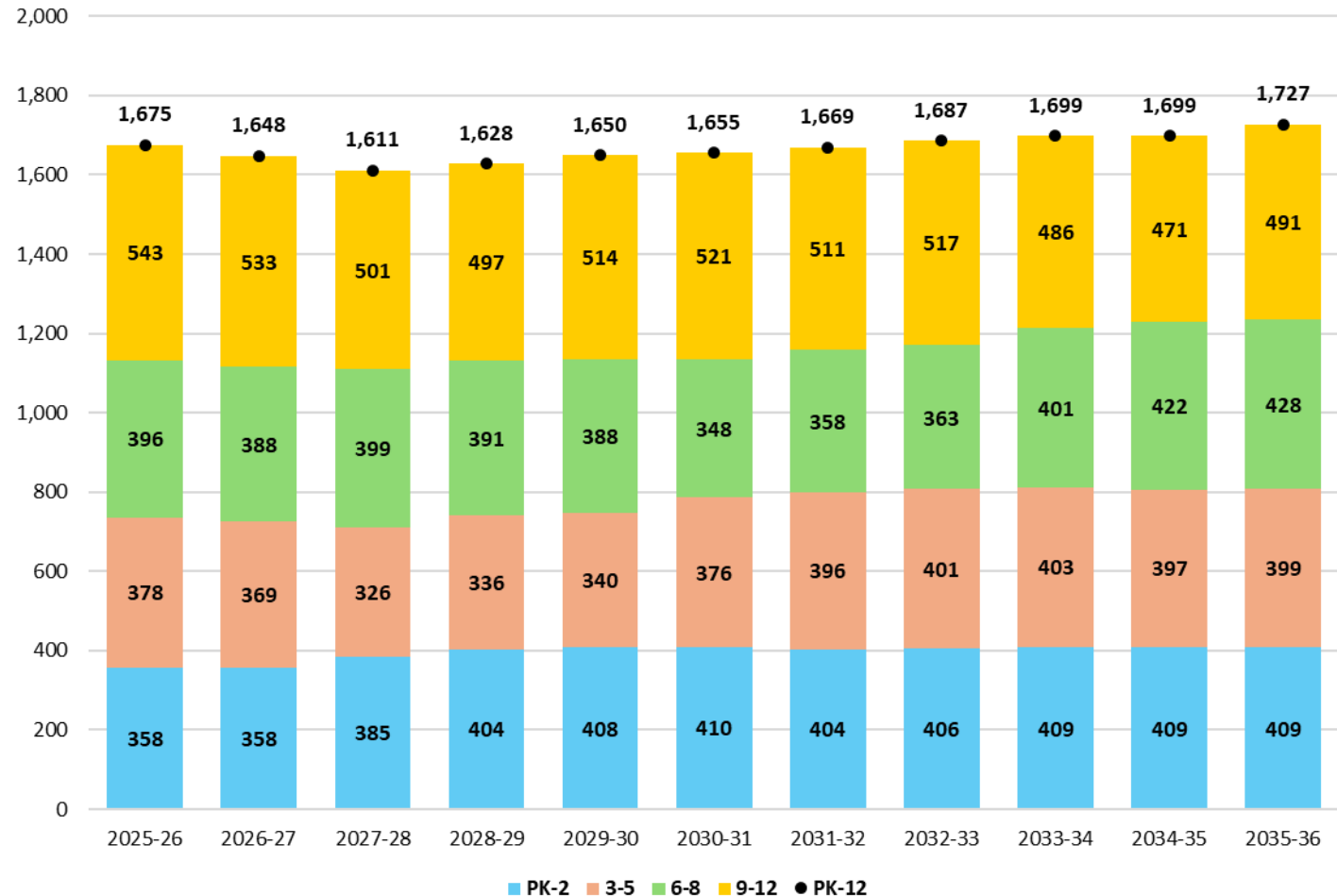
Projection Model Comparison (PK-12)
Granby Public Schools 2026-27 to 2035-36



Districtwide Projections (Medium)

- Overall PK-12 enrollment is projected to decrease over the next two years to a low of 1,611 students before rebounding over the final eight years, peaking at 1,727 students in 2035-36.
- PK-2nd enrollment is projected to peak at 410 students by 2030-31, an increase of 52 students, or 15%.
- 3rd-5th grade enrollment is projected to decrease over the next three years as small cohort currently in 1st grade moves up. Over the final five years, enrollment is projected to stabilize at about 400 students.
- Middle School (6th-8th) enrollment is projected to stay stable over the next four years before decreasing to a low of 348 students in 2030-31 as the small cohort currently in 1st grade moves up. Enrollment is projected to rebound over the final five years, reaching 428 students by 2035-36.
- High school (9-12) enrollment is projected to average about 500 students between 2027-28 and 2032-33 before decreasing over the final three years of the projections.

Granby Public Schools Current and Projected Enrollment: 2025-26 to 2035-36 (Medium Model)



Individual School Projections (Medium)

- Pre-K enrollment was held constant at 35 students (2025-26 levels) for the duration of the projections.
- Enrollment at Kelly Lane Primary School is projected to peak at 410 students in 2030-31.
- Over the final five years, enrollment is projected to stabilize and average 407 students.

Kelly Lane Primary School

School Year	PK	K	1	2	PK-2 Total
2025-26	35	111	93	119	358
2026-27	35	117	114	92	358
2027-28	35	117	120	113	385
2028-29	35	126	122	121	404
2029-30	35	119	131	123	408
2030-31	35	119	124	132	410
2031-32	35	120	124	125	404
2032-33	35	121	125	125	406
2033-34	35	122	126	126	409
2034-35	35	120	127	127	409
2035-36	35	121	125	128	409

OGA 8-year
projection window

Peak 8-Year
Projected Enrollment

Individual School Projections (Medium)

- Enrollment at Wells Road Intermediate School is projected to decrease to a low of 326 students in 2027-28 when a small cohort currently in 1st grade matriculates into 3rd grade.
- Enrollment is projected to rebound over the later years of the projections, reaching a peak 8-year projected enrollment of 403 students in 2033-34.
- Over the last five years, enrollment stabilizes at about 400 students.

Wells Road Intermediate School

School Year	3	4	5	3-5 Total
2025-26	109	137	132	378
2026-27	121	110	138	369
2027-28	93	122	111	326
2028-29	116	95	125	336
2029-30	124	119	97	340
2030-31	127	127	122	376
2031-32	136	130	130	396
2032-33	129	139	133	401
2033-34	129	132	142	403
2034-35	130	132	135	397
2035-36	131	133	135	399

OGA 8-year
projection window

Peak 8-Year
Projected Enrollment

Individual School Projections (Medium)

- Enrollment at Granby Memorial Middle School is projected to stay relatively stable over the next four years, averaging 392 students.
- Enrollment declines from 2029-30 through 2030-31 when small cohort currently in 1st grade moves through the middle school.
- Enrollment is projected to rebound over the later years of the projections, reaching a **peak 8-year projected enrollment of 401 students** in 2033-34.
- Over the final two years of the projections, enrollment continues to increase, reaching 428 students in 2035-36.

Granby Memorial Middle School

School Year	6	7	8	6-8 Total
2025-26	126	130	140	396
2026-27	133	127	128	388
2027-28	140	134	125	399
2028-29	114	143	134	391
2029-30	128	117	143	388
2030-31	100	131	117	348
2031-32	125	102	131	358
2032-33	133	128	102	363
2033-34	137	136	128	401
2034-35	146	140	136	422
2035-36	139	149	140	428

OGA 8-year
projection window

Peak 8-Year
Projected Enrollment

Individual School Projections (Medium)

- Enrollment at Granby Memorial High School is projected to peak at 520 students in 2026-27.
- High school enrollment is projected to average about 500 students between 2027-28 and 2032-33 before decreasing over the final three years of the projections.
- Note that enrollment in GPS special programs (GAP, BEAR Academy) was deducted from the GMHS enrollment and held constant based on 2025-26 levels.

Granby Memorial High School

School Year	9	10	11	12	9-12 Total
2025-26	119	129	150	132	530
2026-27	135	118	125	142	520
2027-28	123	134	114	117	488
2028-29	122	124	131	107	484
2029-30	131	123	122	125	501
2030-31	140	132	121	115	508
2031-32	114	141	129	114	498
2032-33	128	115	138	123	504
2033-34	99	129	113	132	473
2034-35	125	100	127	106	458
2035-36	133	126	98	121	478

OGA 8-year
projection window

Peak 8-Year
Projected Enrollment

GPS Special Programs

School Year	9	10	11	12	9-12 Total
2025-26	1	1	0	11	13
2026-27	1	1	0	11	13
2027-28	1	1	0	11	13
2028-29	1	1	0	11	13
2029-30	1	1	0	11	13
2030-31	1	1	0	11	13
2031-32	1	1	0	11	13
2032-33	1	1	0	11	13
2033-34	1	1	0	11	13
2034-35	1	1	0	11	13
2035-36	1	1	0	11	13

Enrollment in special programs (GAP, BEAR Academy) were deducted from the GMHS enrollment and held constant based on 2025-26 levels. Note that BEAR Academy students were classified as 12th graders.

Appendix A

Low, Medium & High Districtwide Projections



Appendix: Districtwide Projections Low

School Year	Birth Year	Births	K	1	2	3	4	5	6	7	8	9	10	11	12	PK	PK-12 Total	K-12 Total	PK-2 Total	3-5 Total	6-8 Total	9-12 Total
2025-26	2020	67	111	93	119	109	137	132	126	130	140	120	130	150	143	35	1,675	1,640	358	378	396	543
2026-27	2021	83	114	113	92	120	109	137	133	126	127	135	118	124	152	35	1,635	1,600	354	366	386	529
2027-28	2022	82	113	116	111	93	121	109	138	133	123	123	133	113	126	35	1,587	1,552	375	323	394	495
2028-29	2023	105	123	117	116	114	95	123	111	140	132	120	123	129	117	35	1,595	1,560	391	332	383	489
2029-30	2024	88	116	127	117	119	116	96	126	113	139	129	120	119	133	35	1,605	1,570	395	331	378	501
2030-31	2025	88	116	120	127	120	121	118	98	128	112	136	129	116	123	35	1,599	1,564	398	359	338	504
2031-32	2026	83	113	120	120	130	122	123	120	100	127	110	136	125	120	35	1,601	1,566	388	375	347	491
2032-33	2027	84	113	117	120	123	133	124	126	122	99	124	110	132	129	35	1,607	1,572	385	380	347	495
2033-34	2028	86	115	117	117	123	125	135	127	128	121	97	124	106	136	35	1,606	1,571	384	383	376	463
2034-35	2029	83	113	119	117	120	125	127	138	129	127	118	97	120	109	35	1,594	1,559	384	372	394	444
2035-36	2030	84	113	117	119	120	122	127	130	140	128	124	118	94	124	35	1,611	1,576	384	369	398	460

Appendix: Districtwide Projections Medium

School Year	Birth Year	Births	K	1	2	3	4	5	6	7	8	9	10	11	12	PK	PK-12 Total	K-12 Total	PK-2 Total	3-5 Total	6-8 Total	9-12 Total
2025-26	2020	67	111	93	119	109	137	132	126	130	140	120	130	150	143	35	1,675	1,640	358	378	396	543
2026-27	2021	83	117	114	92	121	110	138	133	127	128	136	119	125	153	35	1,648	1,613	358	369	388	533
2027-28	2022	82	117	120	113	93	122	111	140	134	125	124	135	114	128	35	1,611	1,576	385	326	399	501
2028-29	2023	105	126	122	121	116	95	125	114	143	134	123	125	131	118	35	1,628	1,593	404	336	391	497
2029-30	2024	88	119	131	123	124	119	97	128	117	143	132	124	122	136	35	1,650	1,615	408	340	388	514
2030-31	2025	88	119	124	132	127	127	122	100	131	117	141	133	121	126	35	1,655	1,620	410	376	348	521
2031-32	2026	89	120	124	125	136	130	130	125	102	131	115	142	129	125	35	1,669	1,634	404	396	358	511
2032-33	2027	90	121	125	125	129	139	133	133	128	102	129	116	138	134	35	1,687	1,652	406	401	363	517
2033-34	2028	92	122	126	126	129	132	142	137	136	128	100	130	113	143	35	1,699	1,664	409	403	401	486
2034-35	2029	89	120	127	127	130	132	135	146	140	136	126	101	127	117	35	1,699	1,664	409	397	422	471
2035-36	2030	90	121	125	128	131	133	135	139	149	140	134	127	98	132	35	1,727	1,692	409	399	428	491



Appendix: Districtwide Projections High

School Year	Birth Year	Births	K	1	2	3	4	5	6	7	8	9	10	11	12	PK	PK-12 Total	K-12 Total	PK-2 Total	3-5 Total	6-8 Total	9-12 Total
2025-26	2020	67	111	93	119	109	137	132	126	130	140	120	130	150	143	35	1,675	1,640	358	378	396	543
2026-27	2021	83	121	114	93	121	111	138	134	128	129	136	120	125	154	35	1,659	1,624	363	370	391	535
2027-28	2022	82	120	125	114	95	123	112	140	136	127	126	136	116	128	35	1,633	1,598	394	330	403	506
2028-29	2023	105	130	125	126	118	98	126	116	144	137	126	128	133	121	35	1,663	1,628	416	342	397	508
2029-30	2024	88	123	136	126	130	122	101	130	119	145	136	128	125	139	35	1,695	1,660	420	353	394	528
2030-31	2025	88	123	129	137	130	134	125	104	134	119	143	138	125	130	35	1,706	1,671	424	389	357	536
2031-32	2026	95	127	129	130	142	134	137	129	107	135	118	145	135	130	35	1,733	1,698	421	413	371	528
2032-33	2027	96	128	133	130	134	146	137	141	133	107	134	119	142	141	35	1,760	1,725	426	417	381	536
2033-34	2028	98	129	134	134	134	138	150	141	145	134	106	136	116	148	35	1,780	1,745	432	422	420	506
2034-35	2029	95	127	135	135	138	138	142	155	145	146	133	107	133	121	35	1,790	1,755	432	418	446	494
2035-36	2030	96	128	133	136	139	142	142	146	159	146	144	135	105	139	35	1,829	1,794	432	423	451	523