



Chelsea Reyes, Executive Director of Guidance, Counseling and Wellness

Guidance, Counseling and Wellness Team



Chelsea Reyes
Executive Director of
Guidance, Counseling and
Wellness



Scott Randolph
Director of Community
Support Services



Becky Rhodes
Director of Nursing
Services



Krista Zeigler
Director of Guidance and
Counseling



Rose Valderaz
Coordinator of Teem
Parent Services



Rico Enriquez
Coordinator of Post-
Secondary Education



Liz Gray
Coordinator of Social
Emotional Learning

Effective Advising Elementary School



Noel Live Museum



Hays Career Parade

CAREER PARADE

January is our Career Month and we would like to invite parents to our Character Parade.

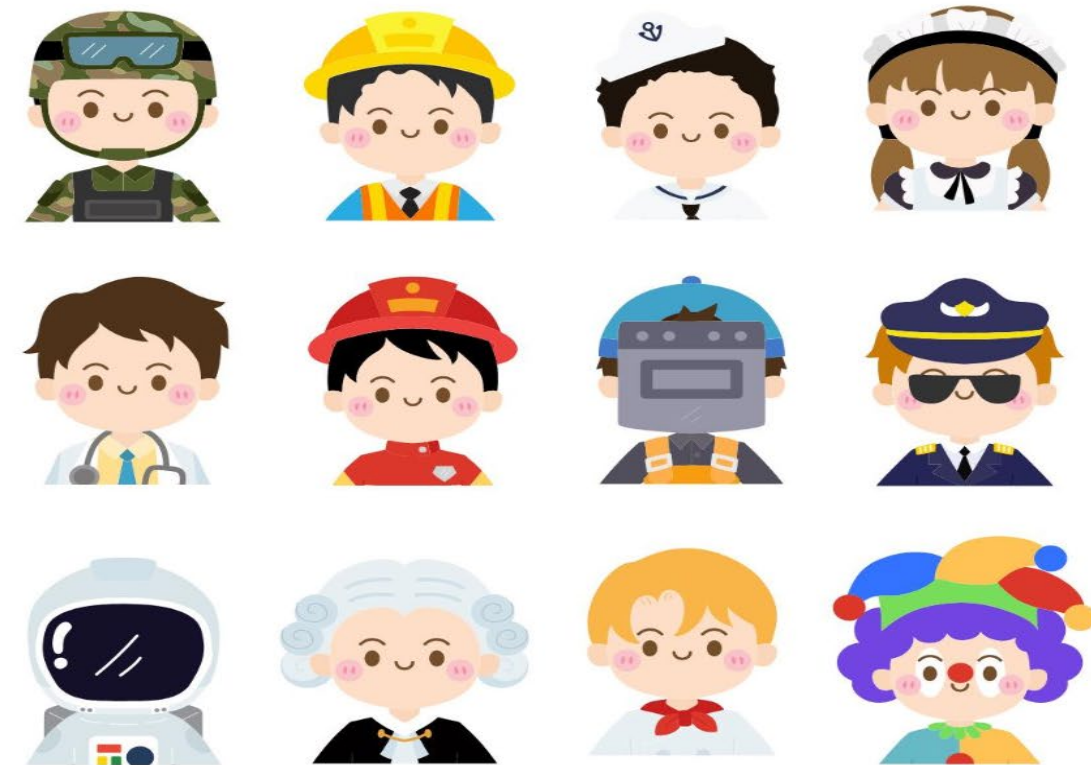


When: Monday, January 30th, 2023 at 8:00 am

Where: Hays' Cafeteria

DESFILE DE PROFESIONES

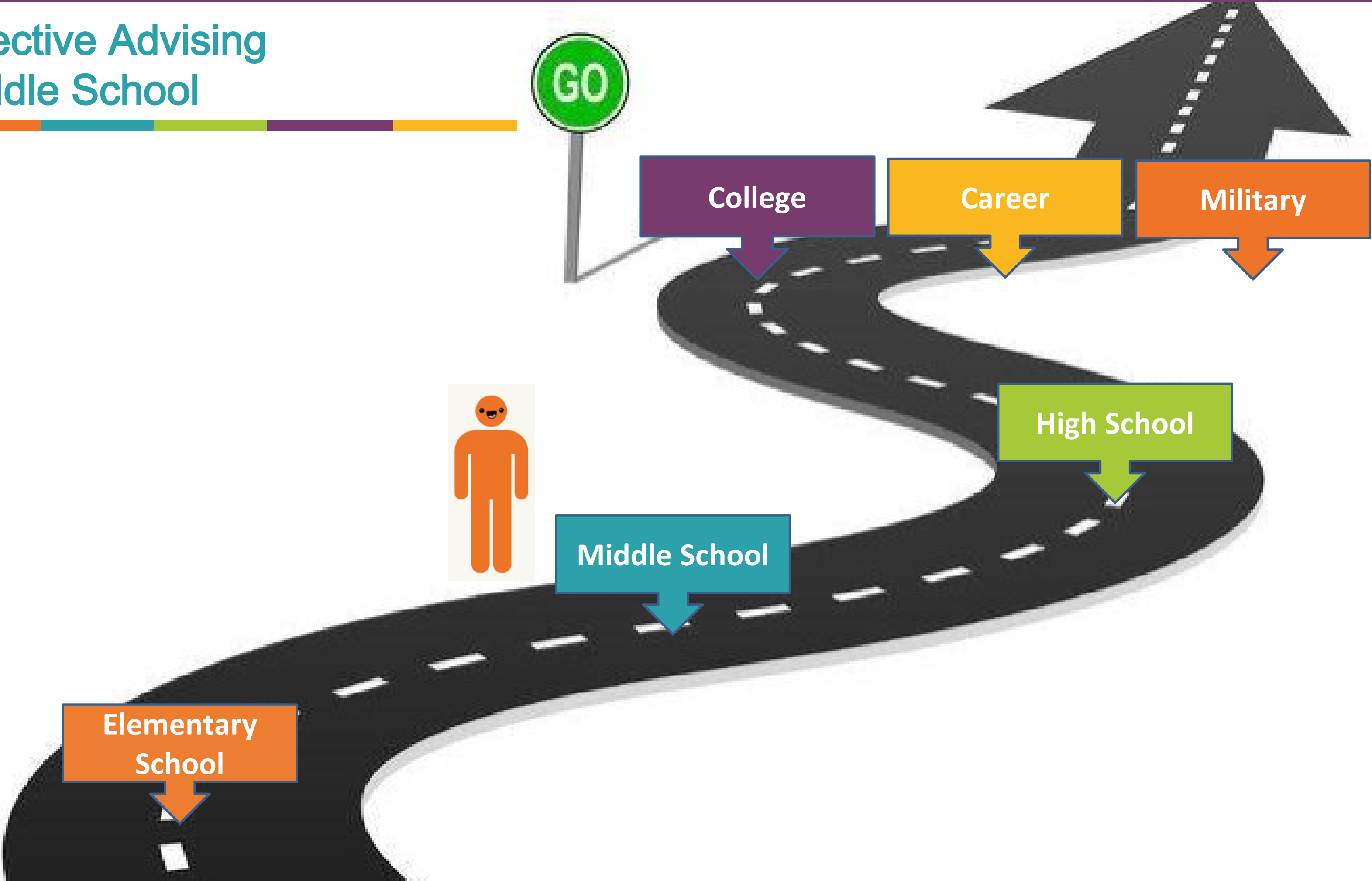
Enero es nuestro mes de profesiones y nos gustaria invitar a todos los padres y representantes a nuestro Desfile de Profesiones.



Cuando: Lunes, 30 de enero del 2023 a las 8:00 am

Donde: Cafeteria de Hays

Effective Advising Middle School



Career Cluster Finder



[Agriculture, Food and Natural Resources](#)



[Arts, Audio/Video Technology and Communications](#)



[Education and Training](#)



[Government and Public Administration](#)



[Hospitality and Tourism](#)



[Information Technology](#)



[Manufacturing](#)



[Science, Technology, Engineering and Mathematics](#)



[Architecture and Construction](#)



[Business Management and Administration](#)



[Finance](#)



[Health Science](#)



[Human Services](#)



[Law, Public Safety, Corrections and Security](#)



[Marketing](#)



[Transportation, Distribution and Logistics](#)

Your Top 4 Cluster Matches

Naviance provides your top scoring matches based on what you entered about your interests, qualities, and subjects.



SCORE: 10

Hospitality and Tourism CLUSTER

This Career Cluster is focused on operations of restaurants and other



SCORE: 9

Education and Training CLUSTER

This Career Cluster is focused on planning, managing and providing education and training services.

Why is this a top cluster?



MATCHING ACTIVITIES

3



MATCHING QUALITIES

3



MATCHING SUBJECTS

3



SCORE: 10

Human Services CLUSTER

This Career Cluster is focused on careers that relate to families and human needs



SCORE: 8

Agriculture, Food and Natural Resources CLUSTER

This Career Cluster is focused on the production, marketing, and development of agricultural commodities and resources.

Why is this a top cluster?



MATCHING ACTIVITIES

3



MATCHING QUALITIES

4



MATCHING SUBJECTS

1

Your Cluster Interest Profile

These were your activities, qualities and subjects when you last took this assessment. If they have changed, don't worry you can retake **Career Cluster Finder**.

Activities



Learn how things grow and stay alive.



Hunt and/or fish.



Protect the environment.



Work with my hands.



Visit and learn from beautiful, historic, or interesting buildings.



Follow logical, step-by-step procedures.



Read and write.



Design brochures and posters.



Work with computer programs.



Help others with their homework or to learn new things.



Direct and plan activities for others.



Help people overcome their challenges.

ECISD
Course Fair



Educational Planning



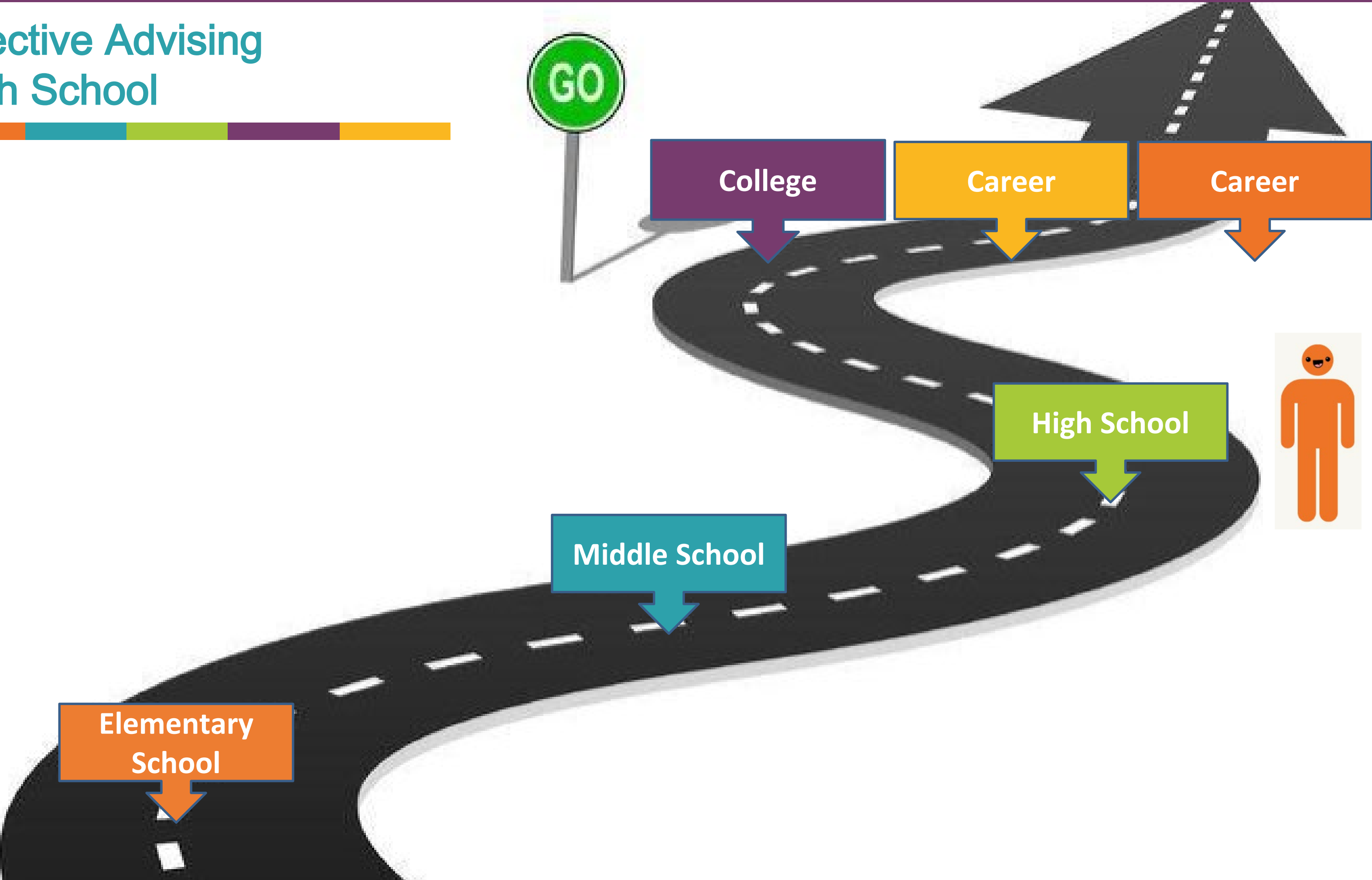
Permian High School @Per... · 11/10/22

Educational planning is in full swing. Our amazing Permian Counselors are working with our students to help guide them towards a successful future! Their hard work and dedication are greatly appreciated. Thank you & GO MOJO!

[@ECISDCounselors](#)



Effective Advising High School



College Night



PHS Lunch and Learn

Sessions available for up to 30 students during each lunch time:

- College freshman applications process and completion
- Connections to counselors and advisors
- Financial aid applications
- Scholarship applications
- Financial literacy



LUNCH AND LEARN HOSTS UTPB & OC!

**OCTOBER
26TH**

Where: V Den

SCAN HERE



**You MUST register to attend
Lunch & Learn Events.**

**Registering gets you ONE
free lunch.**

**THERE IS A LIMIT OF 30 REGISTRANTS EACH
LUNCH HOUR. DON'S MISS OUT, SIGN UP SOON!**

**JOIN US FOR THIS MONTH'S
SESSION!**

WHAT TO EXPECT:

-UTPB REP YVETTE MARTIN WILL COVER UTPB FRESHMAN
ADMISSIONS PROCESS

-OC REP MELISSA BAGGET WILL COVER OC FRESHMAN ADMISSIONS
PROCESS

-YOU WILL GET A CHANCE TO SPEAK WITH THE REPS ABOUT
SCHOLARSHIPS, FINANCIAL AID, ACADEMIC PROGRAMS, AND MORE



Financial Aid and College Applications


NOCHES DE FAFSA Y SOLICITUD

Ector County ISD
TO AND THROUGH SUCCESS CENTER

JUEVES, 16 DE FEBRERO
JUEVES 23 DE MARZO
JUEVES 6 DE ABRIL

Obtén ayuda con FAFSA y aplica a la universidad

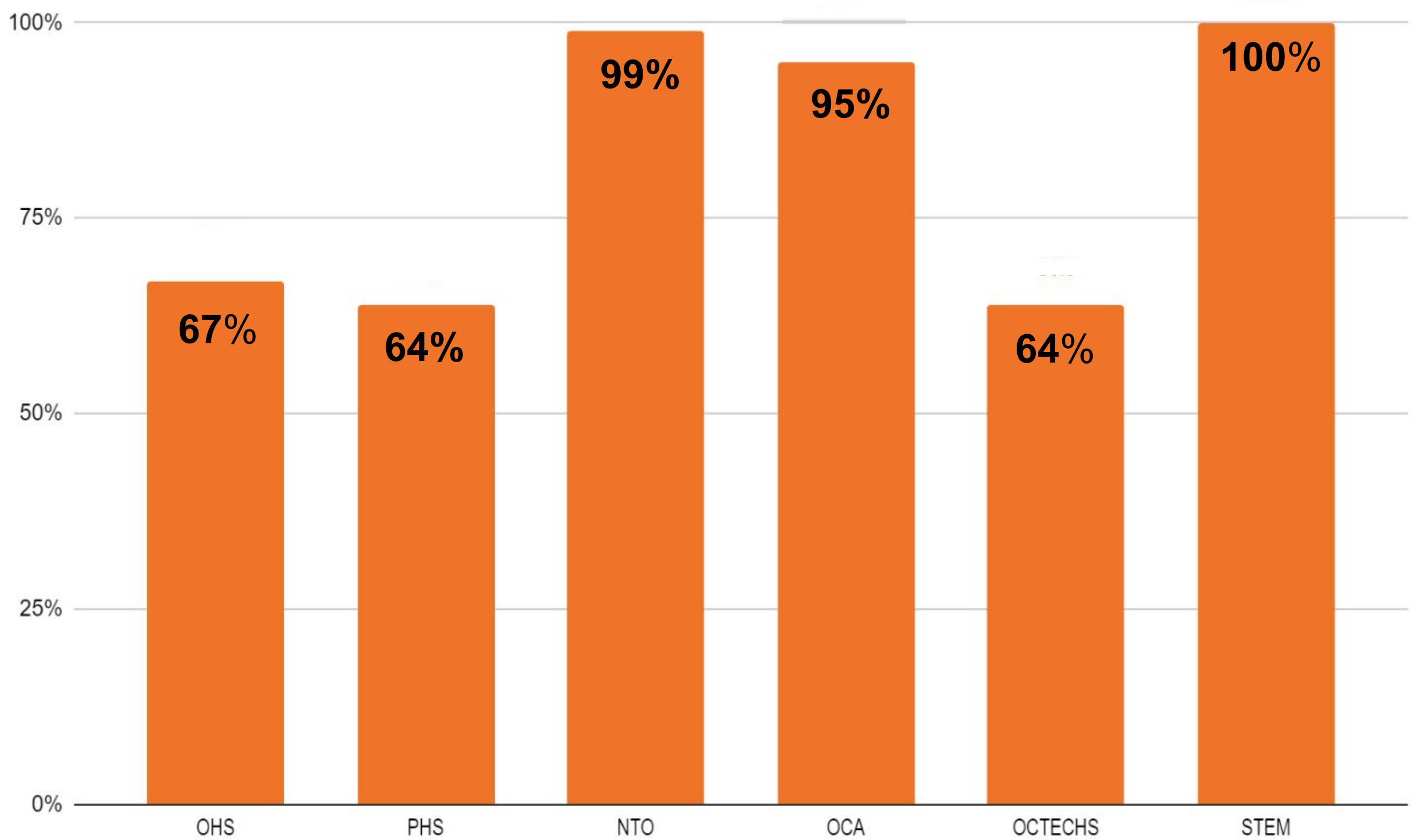
UBICACIÓN: SALA NTO C-9 DE 5 A 7 P. M.



Traer lo siguiente:
DECLARACIONES DE IMPUESTOS 2021-22
NÚMEROS DE SEGURO SOCIAL DEL ESTUDIANTE Y DEL PADRE

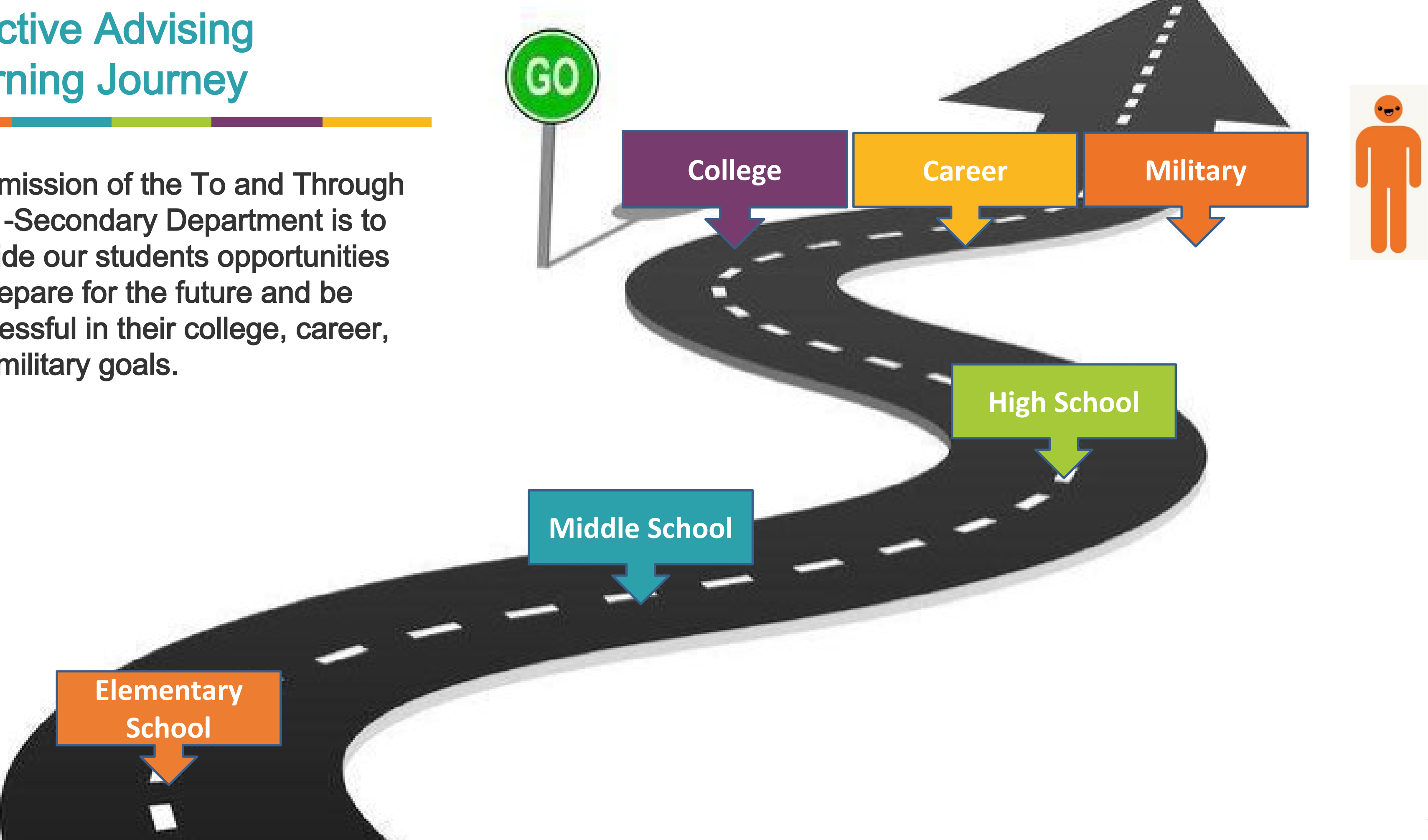
[HTTPS://BIT.LY/TOANDTHROUGHSCWEB](https://bit.ly/toandthroughscweb)

FAFSA/TASFA/Waiver Completion Percentages - Week of 3/7/2023



Effective Advising Learning Journey

The mission of the To and Through Post -Secondary Department is to provide our students opportunities to prepare for the future and be successful in their college, career, and military goals.



Post Secondary - To and Through

Top 10 Alumni Colleges:

1. Odessa College
2. University of Texas Permian Basin
3. Texas Tech
4. Angelo State University
5. Texas State University Austin
6. Texas State University San Marcos
7. University of Texas San Antonio
8. Midland College
9. Texas A&M University
10. West Texas A&M University



We Appreciate Your Support!

