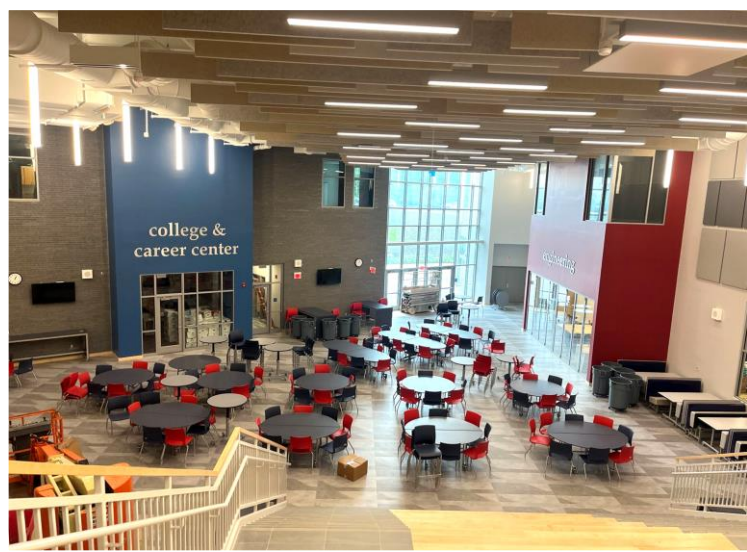


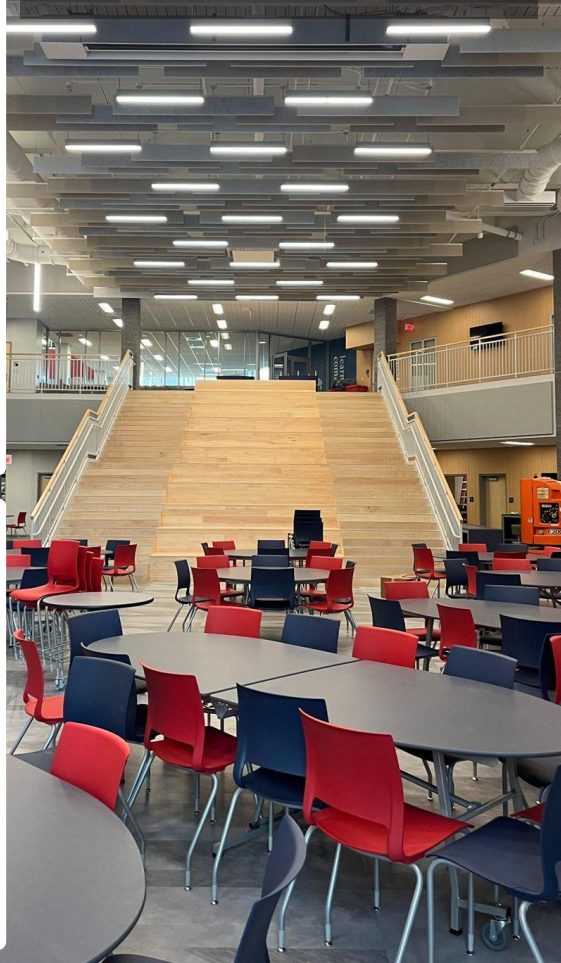


Above: Landscaping is coming together at the new main entrance.
Right: The south entrance will be the staff entrance during the day and a public entrance for evening events
Below: 3 generations of NFHS: The new, the original, and the 1990s cafeteria





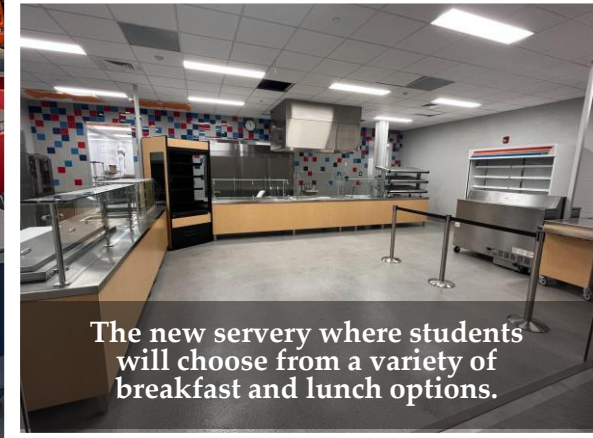
The Dining Commons is the hub of the school, and features the gathering stair.



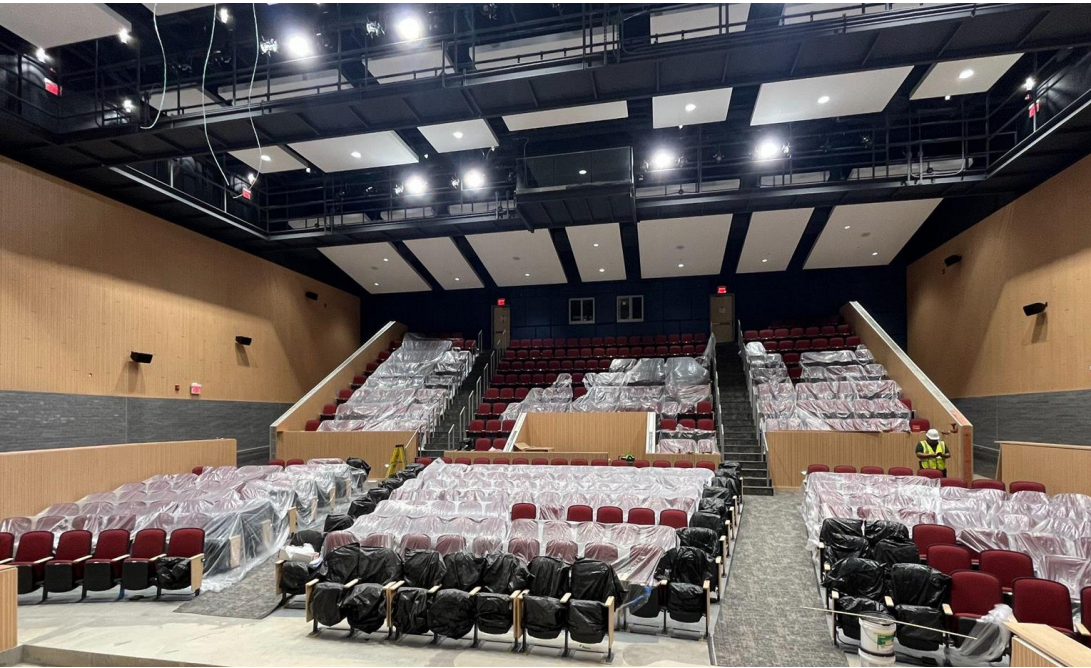
The new home of the Rebel Supplier, our student-run store is easily accessible in the dining commons.



The Rebel Cafe, home of our culinary practicum, will serve as both a classroom and a restaurant to feature our students' creations.



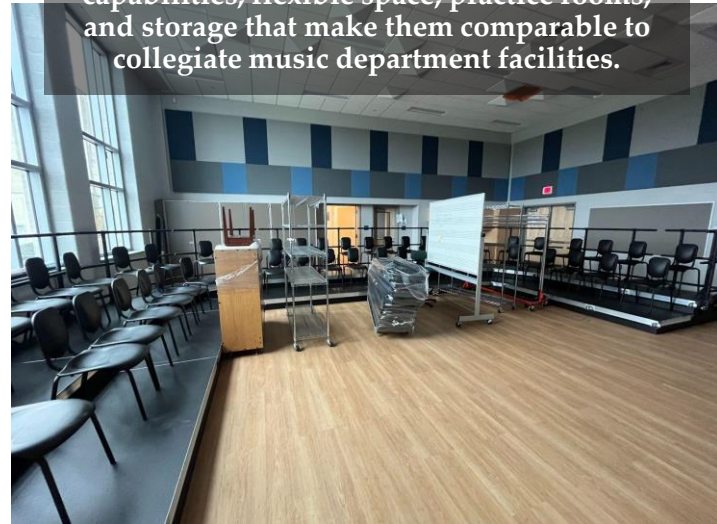
The new servery where students will choose from a variety of breakfast and lunch options.



The theater is a professionally outfitted performance space, and will be a source of pride for the community. Featuring two catwalks, a stage that can be configured for different performances, and a surround-sound wireless system, the sky's the limit for the future of arts programs at NFHS.

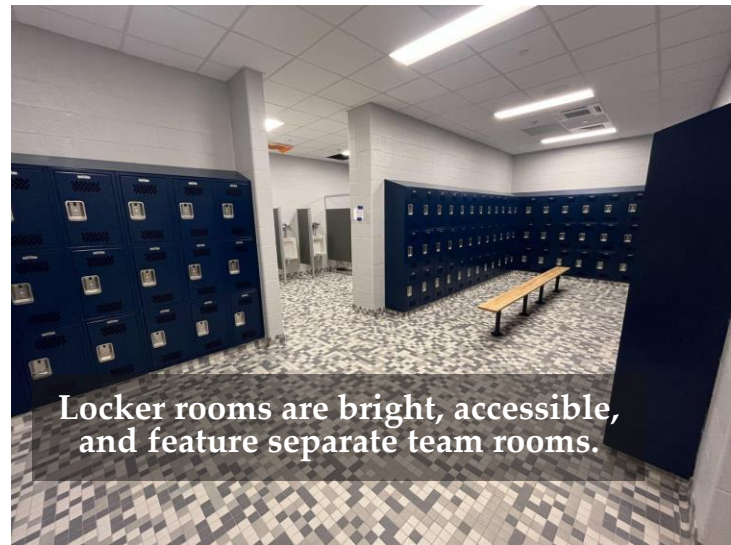


The music rooms feature recording capabilities, flexible space, practice rooms, and storage that make them comparable to collegiate music department facilities.





Situated on the mezzanine overlooking the gymnasium, the wellness center will be an amazing resource to our health and PE program, athletics, and staff wellness activities.



Locker rooms are bright, accessible, and feature separate team rooms.




The construction lab takes our wood and materials construction programs out of the basement and into a modern, professional facility.

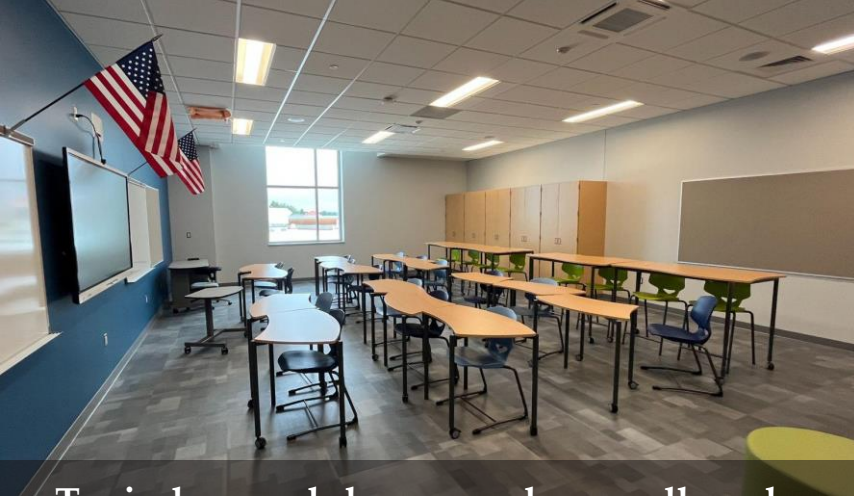


Physics labs feature mobile project tables and overhead electricity for safe implementation of the curriculum.

engineering

The image shows the exterior of a modern building with a large, dark red horizontal band across the top. The word "engineering" is mounted on this band in large, white, three-dimensional, lowercase letters. Below the band is a series of large glass windows and doors with dark frames. Through the glass, the interior of an engineering lab is visible. The lab has a light-colored tiled floor, white walls, and a drop ceiling with recessed lighting. There are several long wooden tables on wheels, some with black chairs. In the background, there are metal shelving units and a red ladder. A sign on the right side of the glass door reads "1-800-USE-MEYER".

The engineering lab is a space that will house our robotics program and encourage creativity and innovation in a variety of disciplines. The wall opens up for competition and showcase events.



Typical general classrooms have well-made, flexible furniture designed to support different modes of learning and teaching, with a variety of sitting and standing options for students.



Biology and chemistry labs have flexible "clab" tables that can be raised and lowered, large, shared prep rooms, and the biology rooms even share a greenhouse!



Six learning neighborhoods provide different environments for teachers and students to collaborate, study, have small group sessions, or arrange to any purpose necessary.

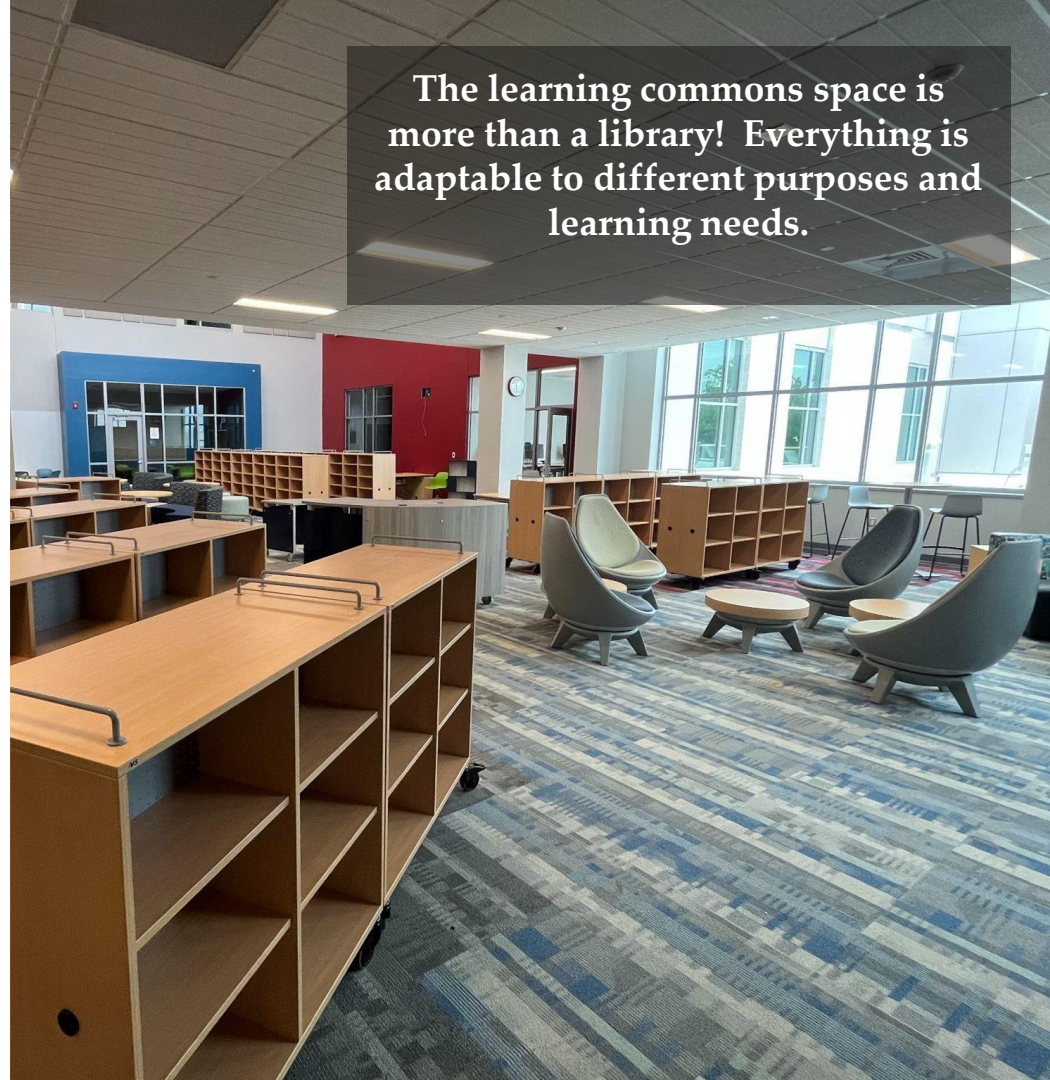


Six learning neighborhoods provide different environments for teachers and students to collaborate, study, have small group sessions, or arrange to any purpose necessary.





The college and career center is where representatives of colleges, universities, trade schools, and military branches can interact with our students. We will also have workshops to help our students (and their parents!) plan for life after high school.

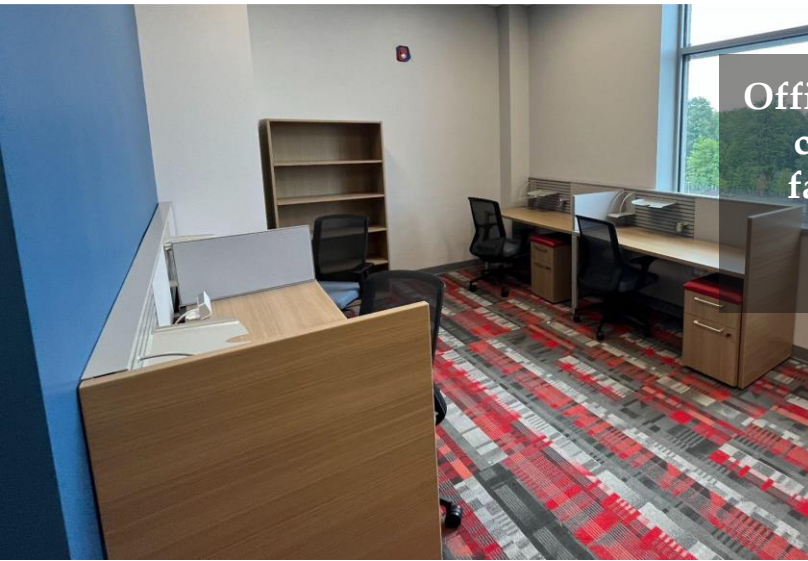


The learning commons space is more than a library! Everything is adaptable to different purposes and learning needs.



The learning commons can host direct instruction, quiet reading or group study in its different zones.





Offices are bright open, and include copying, mail, and kitchenette facilities for staff to use during preparation periods.

