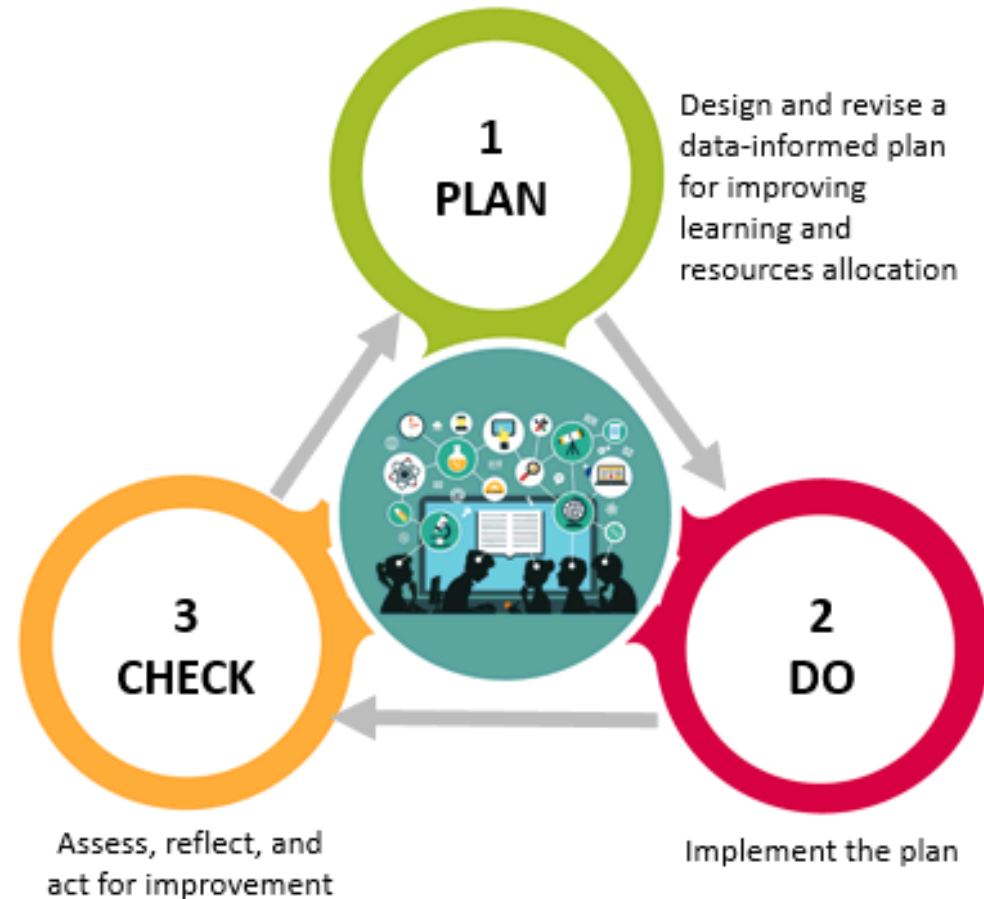
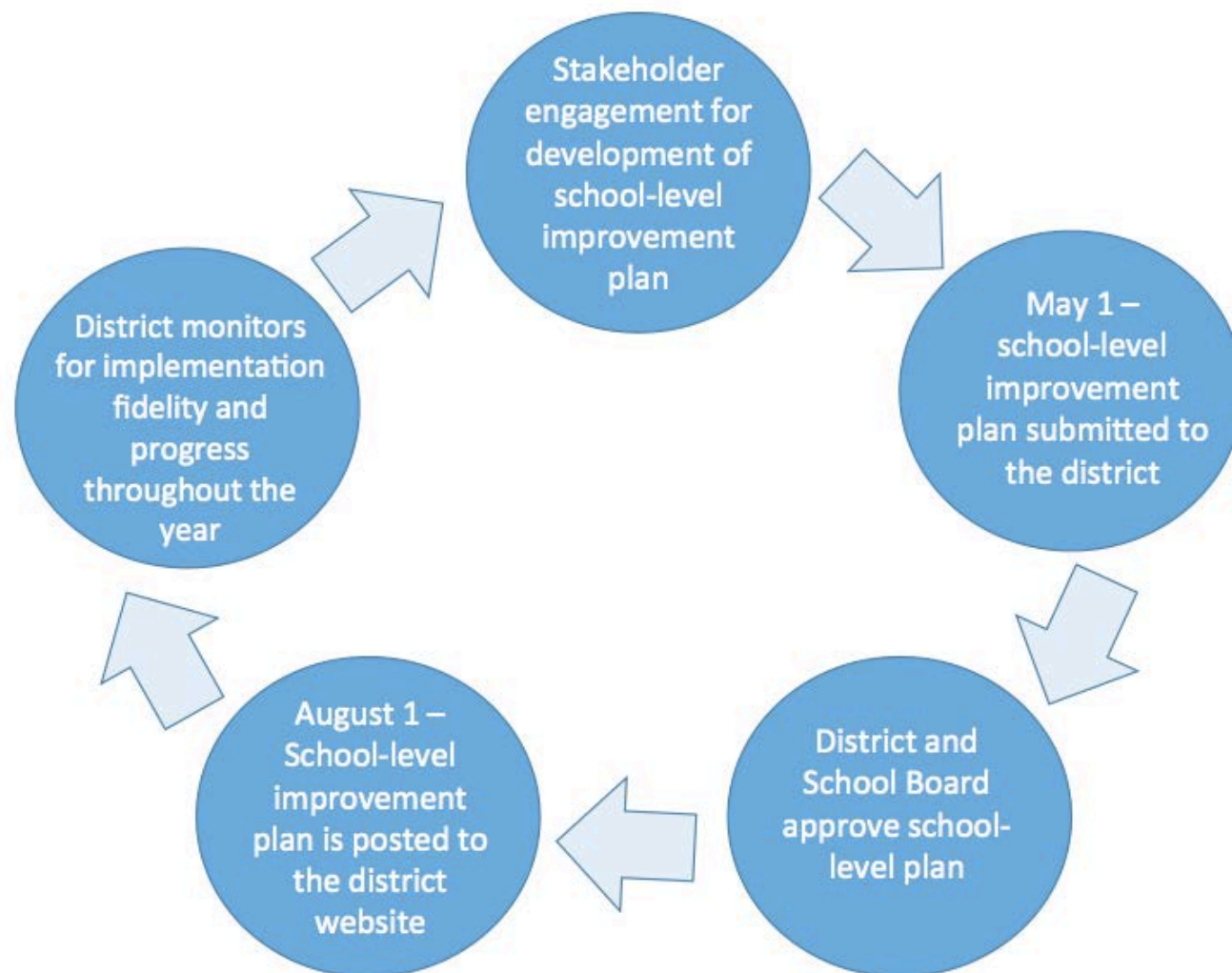


Each school develops a school-level plan that follows a continuous cycle of inquiry



Updating and Monitoring of School Improvement Plans occur throughout the year



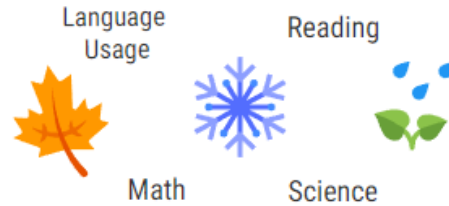
Monitoring of School Improvement Plans

- Shared Google Drives
- Review and Feedback from District Leadership Team
- School Goals Connected to Title I Financial Planning and Goals
- Quarterly Data Visits
 - Review of Progress Towards Meeting Goals
 - Growth and Performance on NWEA Map Assessments
 - Results of Istation Assessments for Reading and Math
 - Identification of students in the 25th Percentile and Below on 2018 ACT Aspire Assessment and Review of Services being Provided

NWEA/Map

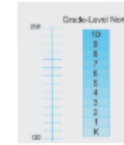
Student Growth = Student Success

ASSESSMENTS



Common Language

**Rasch unit
RIT Score**



Continuous
vertical scale
from K to 12

Student Data



WHAT IT ALL MEANS

Understanding the Data

52% FSPS students scoring at or above the national average in **Reading**

FSPS students who *met or exceeded* their projected growth in **Reading**



55% FSPS students scoring at or above the national average in **Math**

FSPS students who *met or exceeded* their projected growth in **Math**



PREDICTION & GOALS

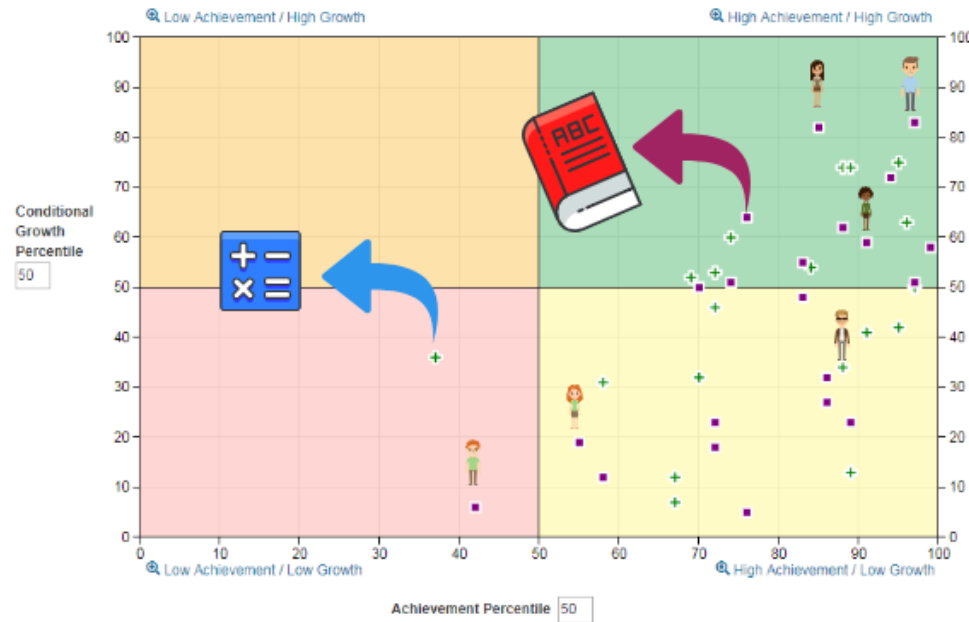
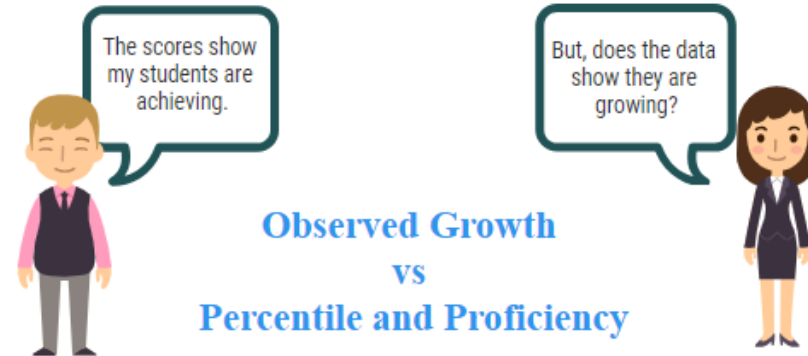
✓ Targeted Norm Growth

✓ Individual Student Growth Goals

✓ **It's only a prediction if nothing changes**

NWEA/Map

Student Growth = Student Success



Where do our students fall?