



Beaverton School District **SAFE ROUTES TO SCHOOL** **2023-2024 ANNUAL REPORT**





COORDINATOR'S STATEMENT

Our students are leading the way towards a more sustainable future. The 2023/2024 school year has witnessed a growing interest in active modes of transportation to school, from Walking School Buses to Bike Buses. Notably, our district-wide May Bike Week has seen a remarkable increase in participation, from 187 to 1,095 participants in just two years.

Kinnaman Elementary hosts one of 15 walking school bus routes, focusing on neighborhoods with high rates of absenteeism. Meanwhile, Sexton Mountain Elementary stands out as the first school in the district to have both a weekly Walking School Bus and a weekly Bike Bus, with an average of 50 students commuting together.

Our program is dedicated to ensuring safe travel for all students. This year, we introduced "Scooter Town" to ensure students learn the skills needed to safely navigate their neighborhoods.

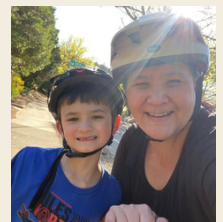
Pedestrian safety has become an engaging learning experience, and we have extended these lessons to reach our preschool and special education students. We maintain our commitment to providing specific assistance to our Title 1 schools and offering free helmets to students in need.

The success of our program depends on dedicated partners and volunteers who back these initiatives and guarantee that infrastructure projects around schools are completed to enable safe travel to school. Your support is greatly appreciated.

Leah Biado

LEAH BIADO

Safe Routes to School Coordinator
Beaverton School District



ABOUT OUR ORGANIZATION



The Beaverton School District (BSD) Safe Routes to School (SRTS) program continues to excel, thanks to the generous support from Metro, the Oregon Department of Transportation, and the City of Beaverton. In the 2023–24 school year, we proudly introduced our new interactive Pedestrian Safety curriculum, Scooter Town. This cutting-edge curriculum engages students with hands-on activities, teaching them vital safety skills for their daily commutes.

Our dedication to expanding our impact remains strong. This year, we reached out to more families, championed necessary infrastructure improvements, and provided focused, hands-on

support to our Title 1 schools. The positive results of our program are reflected in comprehensive data, evaluations, and personal testimonials throughout this report.

We are delighted to witness a growing trend within BSD, as more families recognize the numerous advantages of walking and rolling to school. As you explore this annual report, you will discover the achievements of BSD's Safe Routes to School program, the obstacles we have faced, and our forward-looking plans to further encourage healthy, safe, and active transportation in our school community and beyond.

MEET THE TEAM

THE FACES OF BEAVERTON SRTS



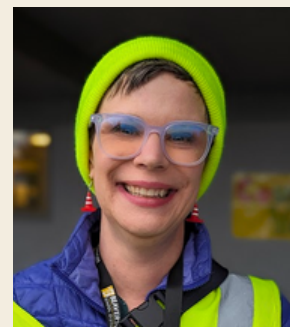
Leah Biado
Coordinator



Linda Feldhan
Assistant Coordinator



Kimberly Schultz
Assistant Coordinator



Julia Sanders
Assistant Coordinator

OUR WORK THIS YEAR



STEP BY STEP TOWARDS A SAFER TOMORROW

As we reflect on the past year, Beaverton Safe Routes to School has continued its mission to enhance safety and promote active transportation for our community's students. Through strategic partnerships with The City of Beaverton and Washington County, we've achieved significant milestones in improving pedestrian infrastructure near schools, advocating for safer routes, and engaging the community in active transportation initiatives.



Our collaborative efforts have led to the implementation of Lead Pedestrian Intervals at key crosswalks, ensuring safer crossings for our children. We also launched successful events like the Summer Kick-Off Bike Rodeo and the Family Treasure Hunt Geocaching Event, fostering a sense of community and encouraging healthy, active lifestyles. These initiatives have not only increased safety but also strengthened community bonds.

Join us as we celebrate our achievements, recognize the dedication of our volunteers and partners, and reaffirm our commitment to building safer environments where every child can thrive. Together, we are making strides towards a safer, more connected Beaverton.

ENGAGEMENT



All Beaverton Safe Routes to School initiatives begin by listening to students, families, teachers, and school leaders. We strive to form mutually beneficial relationships with existing community organizations and build intentional, ongoing engagement opportunities into the program structure.



WALKING SCHOOL BUSES GAIN MOMENTUM

This year, our Walking School Bus Program has expanded significantly, now featuring 14 regular routes and serving 319 students. A key success was the implementation of a new mapping strategy that optimized routes based on student addresses, ensuring convenience and accessibility. Notably, at Kinnaman and Fir Grove, we mapped walking school bus routes with assigned stops for every student in the walk zone. This growth demonstrates our commitment to providing reliable, safe, and fun active commuting options for all students, setting the stage for further enhancements in the coming years.



BEAVERTON BIKE BUS MOVEMENT TAKES OFF

The Beaverton Bike Bus Movement grew this year, expanding from two to four bike buses during Bike To School Week at Sexton Mountain, Hiteon, Cooper Mountain, and Rock Creek Elementary Schools. Bike buses, which are groups of students biking to school together under adult supervision, offer a safe, fun, and active way to commute. The Sexton Bike Bus, with 50 participants, benefited from the added safety provided by Beaverton's Bicycle Patrol Unit. This successful initiative has led to the establishment of a regular weekly bike bus at Sexton Mountain, highlighting the growing popularity and positive impact of our bike bus program.





HELPING PARENTS TAKE A STEP TOWARDS SAFETY

Our parent education campaign to deter mid-block crossings was launched at Sato and Findley Elementary Schools and emphasized pedestrian safety with a creative approach. Featuring a cute kitty crossing guard and spray-chalked paw prints leading to crosswalks, the campaign reminded parents to use crosswalks instead of crossing mid-block when picking up their children. The message was well received and effectively promoted safe walking behaviors. We plan to extend this initiative to other schools at the beginning of the 2024-25 school year, aiming to encourage safer parent behavior through the use of positive messaging.



COMPREHENSIVE SRTS MESSAGING TOOLKIT FOR SCHOOLS

This year, we introduced a comprehensive Safe Routes to School Messaging Toolkit for school secretaries and PTO groups, designed to streamline the communication of safe routes messaging. The toolkit, which includes an event calendar, planning guide, and 35 articles in English and Spanish with corresponding graphics, equips secretaries with everything needed for year-round messaging. The advance provision of these resources has been positively received, allowing school leaders to plan and promote events more efficiently. This initiative has significantly simplified the integration of safe routes messaging into school communications, enhancing our overall outreach and impact.



REGIONAL TRAVEL OPTIONS GRANTS FOR WALKING & ROLLING

This year, our efforts in securing Metro's Regional Travel Options Micro-Grants have expanded, benefiting eight schools: The Community Transition Program, Nancy Ryles Elementary, Rock Creek Elementary, Oak Hills Elementary, McKinley Elementary, Vose Elementary, Hiteon Elementary, and Cooper Mountain Elementary. These grants have been utilized for various initiatives, such as rewarding Walking School Bus volunteers with gift cards and giving students collectible prizes for walking. By leveraging these grants, we have significantly strengthened our ability to encourage active transportation and foster a culture of walking and biking to school, doubling the impact compared to last year.



EQUITY



We work to ensure that Safe Routes to School initiatives are benefiting all demographic groups, with particular attention to ensuring safe, healthy, and fair outcomes for low-income students, students of color, students of all genders, students with disabilities, and others.



BRIDGING THE GAP WITH BIKE RODEOS

Our Bike Rodeos serve as a cornerstone in supporting Title 1 schools to cultivate a biking culture within their communities. This year, we organized Bike Rodeos at four Title 1 schools and collaborated with THPRD on a Summer Kick-Off Rodeo, serving any child in need. Each event offered free bike mechanics, distributed helmets, provided refreshments, hosted a skills course, and featured maps, information, games, and prizes. During our spring Bike Rodeos, our volunteers and staff not only provided bike repairs, free helmets, and free helmet fittings, their efforts also brought families together to celebrate biking. These events were a great opportunity for us to immerse ourselves in the community and forge new connections with parent partners, with 689 participating across all events.



OVERCOMING CHRONIC ABSENTEEISM

Feedback from school administrators has indicated that our daily Walking School Bus programs are proving to be an effective strategy for reducing chronic absenteeism in their schools. Improved attendance significantly enhances student success, as regular attendance is crucial for academic achievement. Next year, we aim to conduct a research project to study the correlation between daily Walking School Bus programs and attendance rates among chronically absent students. This study will provide valuable data, opening doors to new funding streams and partnerships, and offering schools compelling reasons to adopt daily walking programs.



EMPOWERING TITLE 1 SCHOOLS WITH ENHANCED RESOURCES

At BSD Safe Routes to School, we emphasize supporting Title 1 schools by embracing an inclusive strategy for our events. Understanding the challenges these schools face, such as limited volunteer resources, we actively assist in organizing, promoting, and facilitating walking and rolling events at four of Beaverton's Title 1 elementary schools each year. Our deepened engagement with these communities has inspired a shift towards more active transportation habits.

A key success this year is our work with McKinley Elementary School. We collaborated with the school administration and PTO, attended community events to gather feedback, and recruited parent volunteers. McKinley established a monthly Walking School Bus this year with plans to increase to a weekly program next school year. As a result, McKinley saw an almost 4% increase in their walk rate to school. This might seem small, but that means around 25 more students are walking to school and conversely 25 less cars are traveling through the parking lot.



GETTING HELMETS TO STUDENTS WHO NEED THEM MOST

Our dedication to promoting safety through helmet distribution remains unwavering. In partnership with Trauma Nurses Talk Tough, we have continued our work providing free helmets to the children who need them most, ensuring they have the necessary gear for safe biking. This year, we distributed 193 helmets at community events located in diverse, low-income neighborhoods. Alongside distribution, we also provided helmet fittings to ensure proper usage and maximum protection. We take pride in equipping students with both the knowledge and equipment needed for road safety, significantly raising awareness about helmet use and potentially saving lives in the process.



EQUITY-CENTERED PROFESSIONAL DEVELOPMENT

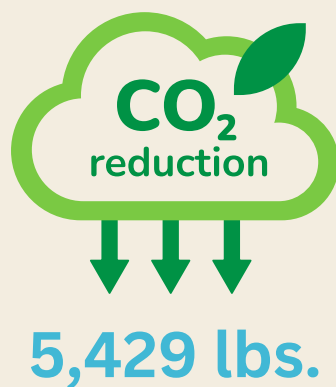
Our staff continuously engages in equity-focused professional development to better serve our diverse student population. This year, we participated in several webinars, including "Plotting our Partnerships: Community Engagement," "Adaptive PE Practices," and "ODOT SRTS Accessibility and Disability Training." Additionally, we attended the OATS conference, where equity-focused speakers discussed creating inclusive environments, addressing biases, and supporting BIPOC and LGBTQ+ students. These learning opportunities equip us to promote equity and inclusivity through all our initiatives.



ACTIVE COMMUTING BOOM AT GREENWAY ELEMENTARY

Our collaboration with Greenway Elementary, a diverse Title 1 school, has yielded impressive results. In preparation for accommodating all Raleigh Hills Elementary students next year due to construction on their building, we focused on increasing walking and rolling participation to reduce future car line congestion. By hosting a bike rodeo and providing extra support for Walk + Roll events, Greenway Elementary raised their walk and bike rates by 11%, equating to 25 more students. Additionally, the drive rate decreased by 9%, meaning 20 fewer cars, saving 5,429 lbs of carbon emissions over the 23/24 school year.

Looking ahead, we plan to establish park and walk locations for staff and students attending Greenway, as well as a regular walking school bus route, to further enhance student safety and reduce traffic congestion.



ENGINEERING

Safe Routes to School collaborates with other agencies to create physical improvements to streets and neighborhoods that make walking and bicycling safer, more comfortable, and more convenient.



SAFE ROUTES TO SCHOOL COORDINATION TEAM

The Beaverton Safe Routes to School Coordination Team has made significant strides this year. By leveraging the expertise of representatives from the Beaverton School District, the City of Beaverton, Washington County, and the Tualatin Hills Parks and Recreation District, we have successfully addressed numerous infrastructure challenges impacting our students' commutes.

Our monthly meetings continue to foster collaboration and streamline efforts across various organizations, maintaining our commitment to student transportation needs. An upcoming focus is launching an inter-agency public safety campaign to address unsafe crossings, the primary issue identified in this year's parent survey.



NEW LEAD PEDESTRIAN INTERVALS

Through our collaboration with Washington County and the City of Beaverton, they successfully added Lead Pedestrian Intervals (LPIs) at crosswalks near three schools. LPIs provide pedestrians with a head start of a few seconds before vehicles receive a green light, significantly improving pedestrian safety. Research shows that LPIs can reduce pedestrian-vehicle crashes by up to 60%, making crosswalks much safer for our students. This initiative is a key part of our ongoing efforts to enhance infrastructure and ensure safer routes to school.



RAPID FLASHING BEACONS FOR SCHOLLS HEIGHTS ELEMENTARY

In partnership with the City of Beaverton, they have installed new Rapid Flashing Beacons (RFBs) at the intersection of Barrows Road and SW Loon Drive, near Scholls Heights Elementary. RFBs, known to reduce traffic accidents by up to 47%, are crucial in ensuring pedestrian safety. This improvement connects the new Heights at Cooper Mountain housing development to the school neighborhood, providing more students with safe walking and biking routes. This initiative underscores our joint commitment to improving accessibility to active transportation options for all Beaverton students.



A SAFER CROSSING COMING FOR CONESTOGA STUDENTS

Following a student-involved traffic incident on January 9th at the crosswalk in front of Conestoga Middle School, we are collaborating with City of Beaverton engineers to enhance safety measures. The crosswalk has been repainted to enhance visibility, a TriMet bus sign has been relocated, and high-visibility crosswalks will be installed before the upcoming school year. Safe Routes to School is committed to promptly addressing traffic safety concerns and prioritizing student safety in partnership with our coordination team. Work on this project will continue over the summer to ensure that it is fully operational by the start of the school year.



CEDAR MILL ELEMENTARY WELCOMES A NEW SIDEWALK

In line with our 2018 action plan for Cedar Mill Elementary School, Washington County installed complete ADA accessible sidewalks on both sides of NW Cornell Blvd. in front of the school. This initiative aims to address student challenges crossing the driveway to the school parking lot and to create a safer route to the school entrance for Cedar Mill students. We strive to ensure a secure environment for all members of our school community as they travel to and from school buildings.

ENCOURAGEMENT

Safe Routes to School generates enthusiasm and increased walking and bicycling for students through events, activities, and programs.



EVENT PLANNING WEBSITES ENHANCE ENGAGEMENT

This year, BSD Safe Routes to School introduced event planning websites to enhance support for school events. These platforms provided comprehensive tools such as event schedules, promotional materials, safety guidelines, and volunteer sign-up forms. Downloadable lessons and resources were also included for teachers to connect classroom learning with their school's event. By centralizing resources and simplifying planning processes, these websites facilitated effective event organization and promoted community engagement, reinforcing our commitment to creating a district culture that celebrates active transportation.



GEOCACHING SUMMER TREASURE HUNT

Following its successful debut, the Family Geocaching Treasure Hunt is back for another exciting summer at The Jenkins Estate. Last year's event was a hit, attracting participants of all ages who enjoyed using the Geocaching app to uncover hidden treasures amidst the park's natural beauty. With 163 finds and enthusiastic feedback from families, this initiative not only promotes outdoor exploration but also enhances navigation and map-reading skills in children. With upgraded caches and a revamped promotional strategy for this year, we aim to build on last year's success and attract even more participants to this enriching community activity.





INTERNATIONAL WALK & ROLL TO SCHOOL DAY

Celebrating a significant 24% increase in participation from 2019 to 2023, International Walk & Roll to School Day engaged 19,495 students across our district in active transportation initiatives. Featuring 19 Walking School Buses, this event underscores our commitment to promoting healthier, eco-friendly travel options for students. Notably, Montclair Elementary School saw a 25% increase in active commuting on the event day compared to their usual rates, demonstrating the event's impact of reducing traffic congestion and fostering a culture of physical activity within our school community.



RUBY BRIDGES WALK TO SCHOOL DAY

Ruby Bridges Walk to School Day, observed on 11/14, united 21 schools in honoring the legacy of Ruby Bridges and advancing themes of equality and inclusion. With 16 walking school buses organized in Ruby's honor, students engaged in meaningful discussions and activities centered around social justice and empathy. Partnering with Scholastic Books Inc., we distributed Ruby Bridges' inspiring book, "I Am Ruby Bridges," to participating schools, enriching students' understanding of civil rights history and promoting empathy and understanding among our diverse student body.



SAFE ROUTES ART CONTEST

Our annual Walk & Roll Art Contest, themed "See And Be Seen," showcased the artistic talents of 424 students from 35 schools. Supported by the Beaverton Bicycle Advisory Committee, this contest encouraged students to creatively express the importance of safe commuting practices through art. Recognizing two grand prize winners and one winner from each grade level, the contest not only celebrated artistic achievement but also reinforced the importance of being visible while walking at night, prompting students to reflect on their own safety choices.





LOVE THE BUS WEEK

Love The Bus Week celebrated the invaluable contributions of school bus drivers and highlighted the environmental benefits of school bussing. With a 2% increase in ridership following pandemic-related declines, this initiative emphasizes the importance of sustainable transportation choices and builds positive relationships between students and bus drivers. Through heartfelt cards and special prizes, students expressed their gratitude for safe and reliable transportation, reinforcing the role of school bussing in reducing traffic congestion and carbon emissions within our community.



WINTER WALK & ROLL TO SCHOOL DAY

Despite the winter weather, Winter Walk & Roll To School Day saw enthusiastic participation from 21 schools and 15 Walking School Bus groups. This event, designed to promote resilience and safety in all weather conditions, encouraged students to embrace active commuting habits year-round. Prize bags distributed to participants included items to enhance visibility and safety during darker winter mornings, reinforcing our commitment to promoting safe and healthy transportation options for students.



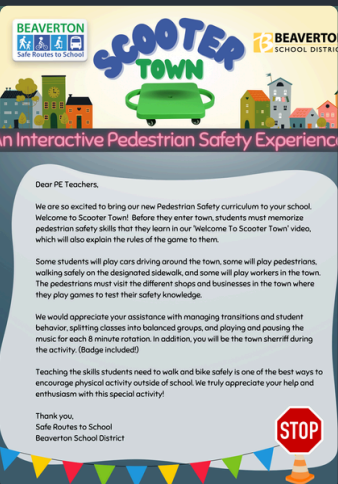
BIKE TO SCHOOL WEEK

Bike To School Week celebrated a remarkable increase in cycling participation, growing from 187 participants in 2022 to 1,095 participants in 2024. This represents a substantial 63.92% rise over two years, highlighting a significant cultural shift towards cycling as a preferred mode of school transportation. Sexton Mountain Elementary School's Bike Bus exemplifies this success, with 50 bike riders participating in their inaugural ride. The event was supported by the Beaverton Bike Patrol Unit of the Beaverton Police, who assisted with traffic management. This initiative was so successful that it became a weekly event, achieving our ultimate goal of establishing regular Bike Buses. This underscores the positive impact of community support and engagement in promoting active lifestyles among students.



EDUCATION

Safe Routes to School provides students and the community with the skills to walk and bicycle safely, educating them about benefits of walking and bicycling, and teaching them about the broad range of transportation choices.



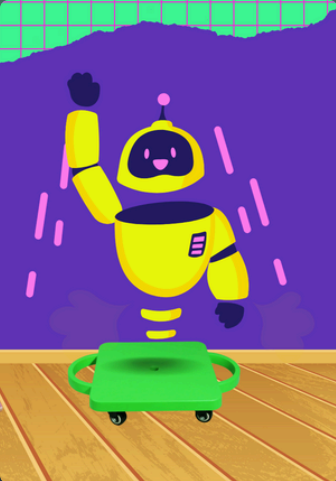
DESIGNING AN INTERACTIVE PEDESTRIAN SAFETY CURRICULUM

Our Safe Routes to School team has developed a dynamic, standards-based curriculum to teach pedestrian and bike safety to elementary students in Beaverton. Recognizing the limited time we have with each student, we created "Scooter Town," an engaging mini-city complete with a school, library, post office, and more. In this interactive environment, students take on roles as pedestrians, drivers, and business workers, using maps to navigate and practice safety skills. This hands-on experience helps children internalize safety concepts in a fun and realistic setting, ensuring they can confidently apply these skills in their everyday lives.



CHILD-CENTERED PEDESTRIAN SAFETY VIDEOS

We produced two child-centered videos featuring young actors from Highland Park Middle School and Hiteon Elementary to teach essential walking and biking safety skills. These relatable videos cover topics such as making eye contact with drivers, crossing streets safely, watching for reversing cars, helmet safety, and parking lot awareness. The use of peer actors and clear visuals makes the safety messages easy for children to understand and retain, helping to instill lifelong safe practices in our students.



ANIMATED SCOOTER TOWN VIDEO

To enhance the excitement of Scooter Town, we created an animated video featuring a character named Scoot. This engaging video explains the rules and objectives of Scooter Town in a fun and captivating way. Students from Kindergarten through fifth grade have shown high levels of interest and focus when watching the video, making it easier for them to understand the procedures and roles. By using this video, we ensure consistent delivery of instructions, allowing our educators to focus on addressing student needs and facilitating a smooth, enjoyable learning experience.



Save Lives with Pedestrian & Bike Safety

by Safe Routes To School Beaverton School District

Help protect and empower our students with a memorable pedestrian safety experience for all 34 elementary schools in the district.

\$2.1k raised

Ended Dec 27, 2023

BEAVERTON EDUCATION FOUNDATION GRANT

Thanks to a generous \$2099 grant from the Beaverton Education Foundation, funded by the PTAs of Findley Elementary, Oak Hills Elementary, and Bonny Slope Elementary, we were able to purchase durable materials for our Scooter Town curriculum. This grant enabled us to create three mobile sets of Scooter Town that can be used for multiple years, along with additional materials for preschool and special education classrooms. These resources provide Beaverton students with an engaging and memorable learning experience, equipping them with the skills to navigate their neighborhoods safely and confidently.



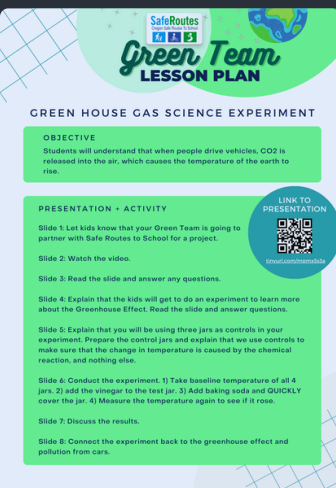
SCOOTER TOWN BROUGHT TO 5,580 STUDENTS

Our innovative pedestrian safety curriculum, Scooter Town, has been successfully introduced to 11 elementary schools: Springville, Terra Linda, Raleigh Park, Nancy Ryles, Cooper Mountain, Montclair, Rock Creek, Bethany, McKinley, and West Tualatin Valley. These schools collectively serve approximately 5,580 students. Over the course of three years, this engaging program will be taught to every Beaverton elementary student. The response has been overwhelmingly positive, with high levels of student engagement and enthusiastic feedback from staff. PE teachers have particularly appreciated the physically active nature of the lesson, expressing a desire to make Scooter Town an annual event. This interactive program has provided countless opportunities for students to practice and apply their safety skills in a fun and effective way.



PILOTING A NEW SPECIAL EDUCATION & PRESCHOOL LESSON

We developed a new pedestrian and bike safety curriculum specifically designed for preschool and special education students. This program introduces basic safety concepts in a way that is accessible and engaging for young and vulnerable pedestrians. The curriculum aims to provide these students with foundational safety skills, helping them navigate their neighborhoods safely. By tailoring our approach to meet the needs of these students, we are taking an important step in ensuring that all Beaverton students have the knowledge and confidence to stay safe.



BUILDING OUR GREEN TEAM LESSON LIBRARY

Building on last year's efforts, we expanded our Green Team Lesson Library, aiming to foster sustainable partnerships with Green Team advisors and parents. These environmental champions share our goal of reducing carbon emissions and support our walking and biking programs. This year, we've added thought-provoking lessons on child environmental hero Greta Thunberg and the benefits of electric school buses. By providing these standards-based lessons, we not only educate students but also inspire action and cultivate a community of passionate environmental advocates and volunteers.



LEADING THE PACK ON SAFE ROUTES EDUCATION

Our Safe Routes to School team's innovative educational programs have gained recognition from national and statewide organizations. Scooter Town is being adopted by other regions, including Lane County, which plans to implement it this fall. Our team recently led a webinar for the Oregon Department of Transportation, showcasing our Green Team lessons and sharing valuable resources. Additionally, our support for the Community Transition Program, which teaches career education to special education adults, will be highlighted at the 2024 Safe Routes to School National Conference in Fort Collins, Colorado. We are proud to share our successes and contribute to the broader Safe Routes community.

EVALUATION

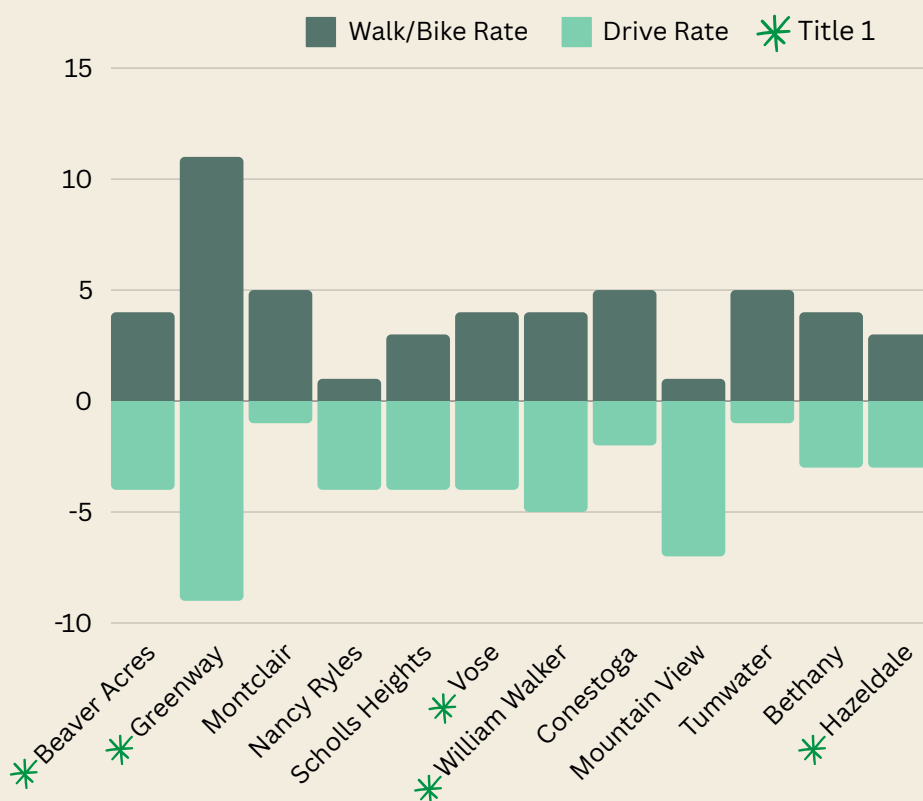


We are always assessing which approaches are more or less successful, ensuring that programs and initiatives are supporting equitable outcomes, and identifying unintended consequences or opportunities to improve the effectiveness of each approach.



This graph highlights the schools that made the most significant improvements during the 2023-24 school year. Title 1 schools are starred on the graph to emphasize their achievements. These schools have demonstrated remarkable progress in promoting active transportation and reducing drive rates. Their success is a testament to the effectiveness of targeted initiatives and the dedication of their communities to creating safer, more sustainable school environments.

SUCCESSFUL SCHOOLS 2023-2024



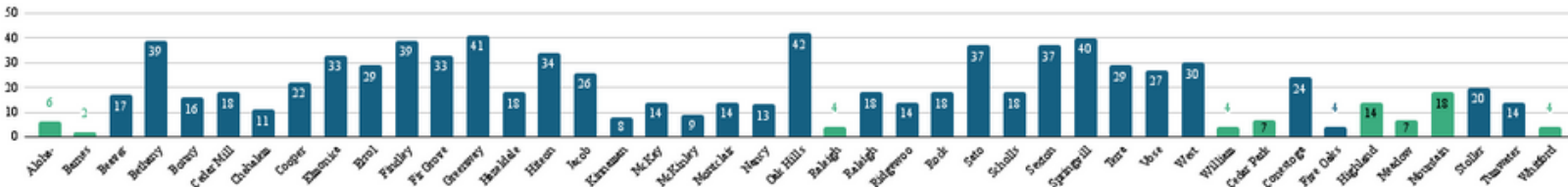
TITLE 1 FOCUS SCHOOLS FOR 2024-2025

We also use this data to help determine which schools are in need of extra support for the following school year. Title 1 schools are always prioritized because these communities typically have more working parents and fewer volunteers and resources. By focusing our efforts on these schools, we aim to provide the necessary support to promote active transportation and improve overall safety and participation rates.



WALK/BIKE RATES BY SCHOOL 2024

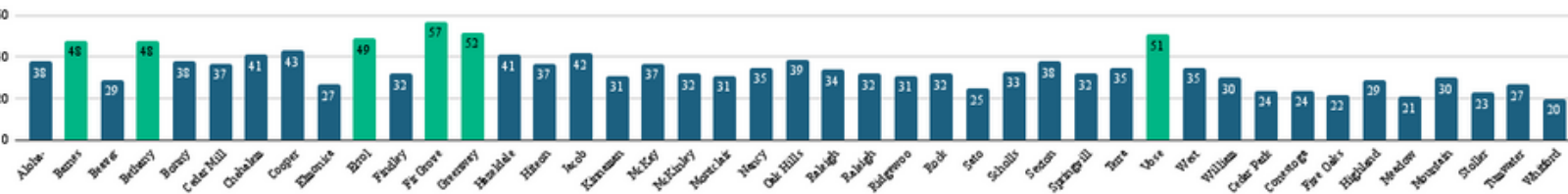
Walk/Bike Rate 2024



This graph illustrates the walk/bike rates for schools in 2024, with the schools displaying the lowest rates highlighted in green. Notably, our Title 1 schools generally have lower active commuting rates. In contrast, schools with well-planned multi-modal infrastructure show higher walk/bike rates, highlighting the impact of effective infrastructure on encouraging active transportation.

DRIVE RATES BY SCHOOL 2024

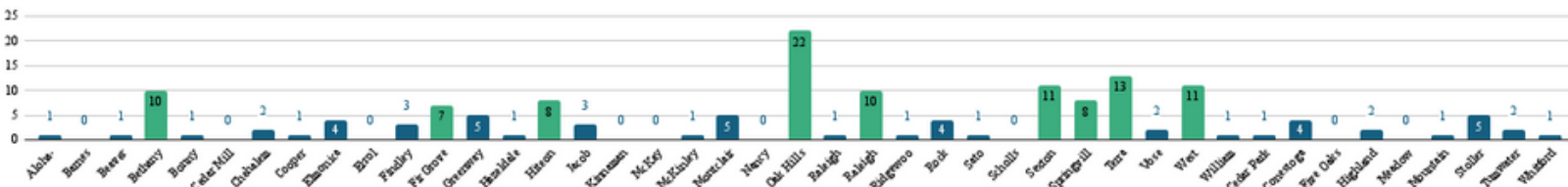
Drive Rate 2024



The graph illustrates the drive rates for schools in 2024, highlighting the highest rates in green. To provide additional support through initiatives like Walking School Buses and Park + Walk locations, we aim to strengthen community relationships with these schools. This will help us grasp and address the specific obstacles they encounter concerning active transportation.

BIKE RATES BY SCHOOL 2024

Bike Rate 2024

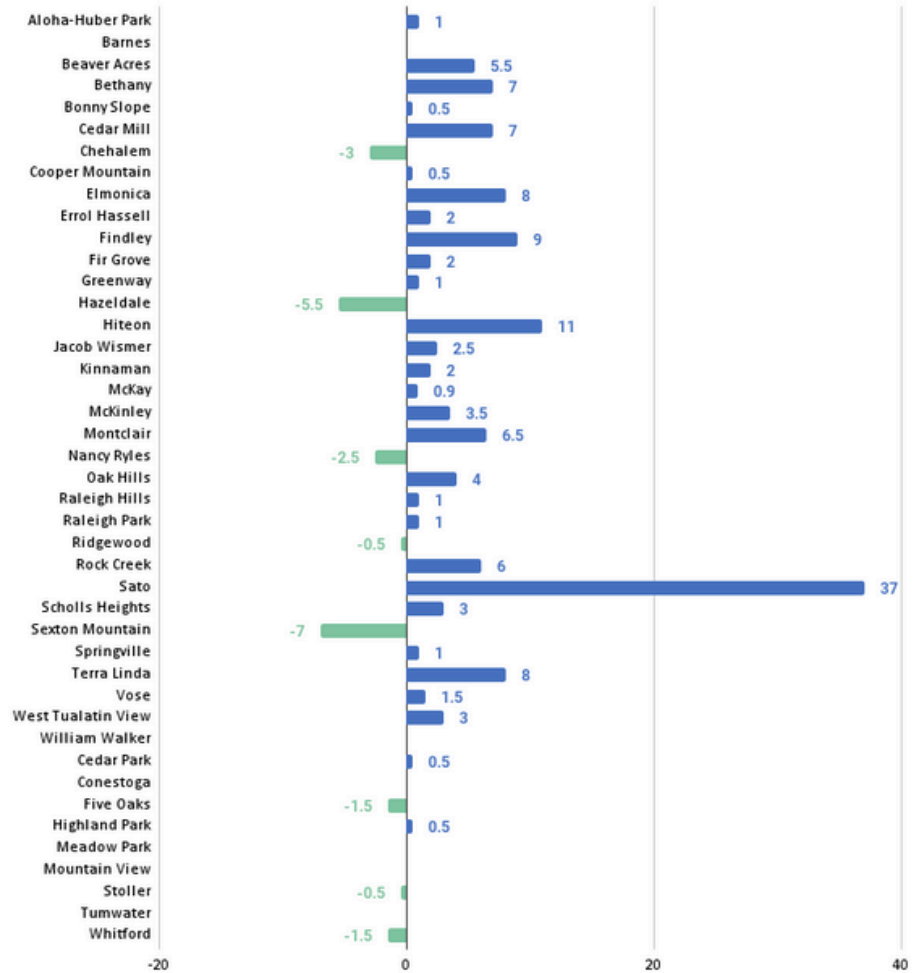


This graph shows the bike rates for schools in 2024, with the highest rates highlighted in green. These schools are excellent candidates for regular bike bus programs, similar to the successful bike bus launched this year at Sexton Mountain. Due to their overwhelming popularity at our pilot schools, we hope to expand our bike bus program to more schools in the district.

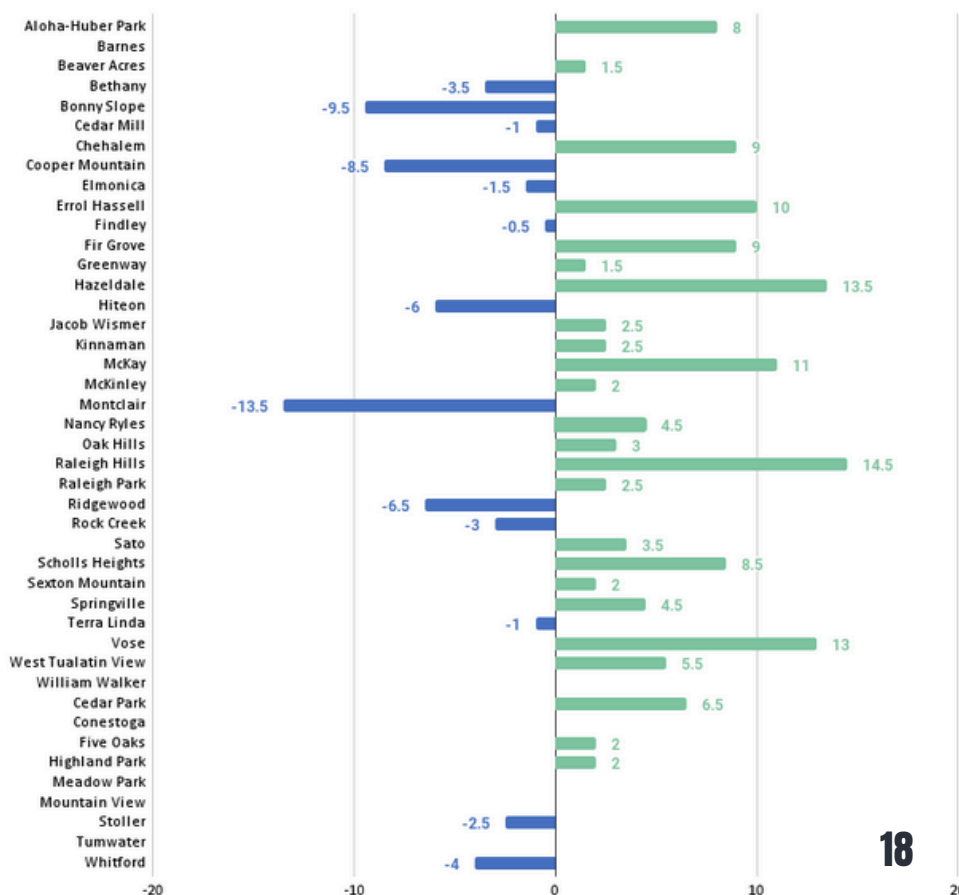
WALK/BIKE RATE DIFFERENCE BY SCHOOL 2019-2024



The graphs illustrate the differences in walking/biking and driving rates for each school between 2019 and 2024. To boost walking/biking rates and reduce driving rates, it is essential to actively engage with each community to grasp the distinct requirements of every school. By involving the school community, we can tailor our efforts and implement successful tactics to encourage and facilitate walking, biking, and using buses for school commutes.

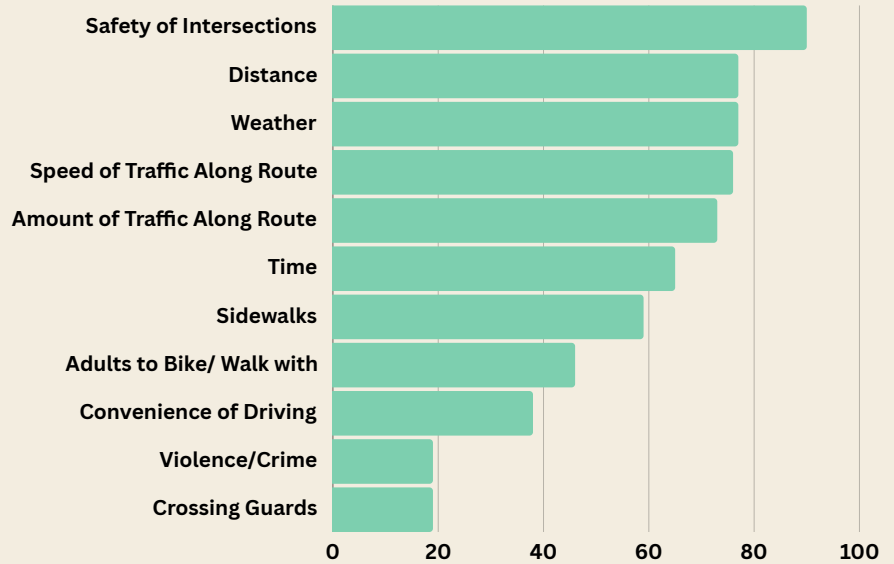


DRIVE RATE DIFFERENCE BY SCHOOL 2019-2024



PARENT SURVEY RESULTS

This graph shows the parent concerns mentioned in our parent survey, categorized by type. One notable shift this year is that 'Safety of Intersections' has risen to the top of the list. This finding aligns with anecdotal feedback from parents and crossing guards. In response, next year we plan to mount an interagency public safety campaign with the City of Beaverton and Washington County to address the issue of drivers not stopping for children in crosswalks. Additionally, we will continue to advocate for Lead Pedestrian Intervals (LPIs) at crosswalks of concern to improve safety.



"I'm glad we are able to use an alternative to driving to school, to reduce the traffic and crowding in the parking lot."

PARENT COMMENTS

"We absolutely love our bus driver! Mr. Bob is amazing, empathetic and whip sharp! He was able to course correct a pretty chaotic bus filled to the brim this year and did so with kindness and compassion. Always making the kids laugh and feel safe! We appreciate him and the transportation department immensely."

"I see many parents walking their kids to school. They watch out for me and my kids. We are a community."

"We have a dangerous intersection where cars don't look for pedestrians. This is the largest barrier to letting the kids walk to school by themselves."

"Our family likes walking to school but we don't feel like there is a safe option for our kids to walk. "

PARENT COMMENTS (CONTINUED)



"Lots of parents drive to school, it is causing a large problem for the kids who walk, bike, or scooter to school. Some people will ignore stop signs and other street signs. Some will speed in the neighborhood where the children cross the street regularly."

"A community leader is needed to lead the kids biking to school in the morning as a big group during bike to school week or a routine weekly event. Big group biking is more fun, encouraging and safe for the kids."



"We love walking to school but also appreciate that a bus stop is available on our street. We are very happy with our options."

"Walking or biking to school would be preferable, but there are no sidewalks."

"We are very grateful for our bus...Thank you BSD for providing our bus!"

"Too many other parents are in such a hurry once they drop their own kids off, there's no regard for the safety of other children trying to make it safely to school."



"We love walking our kid to school as it gives some time to talk, look at plants, experience the weather, etc. We realize we are lucky and fortunate to be able to do this."

"Walking to school is one of our greatest joys and part of what makes (our school) so successful. As parents who walk and drop off, we connect to the community daily. This allows us to be highly engaged and understand how to contribute as volunteers and supporters, and also get to know and look out for our highest needs students."

"We really appreciate the crossing guards at our street."

"Would just love some better walk lanes designated where there are no sidewalks."

"My kids and so many of their school friends live near our school. It really ties our community together. I'm glad we have several socioeconomic levels of housing in our boundaries so we can mix and be united across class lines."



"We love being able to walk... It is the center of our community. We meet our neighbors on our way to and from school."



REFLECTIONS ON THE 2023-2024 SCHOOL YEAR

Beaverton Safe Routes to School had a successful 2023–2024 school year with programs like Scooter Town and the Green Team Lesson Library. They introduced the Safe Routes to School Messaging Toolkit for better communication. Events like Ruby Bridges Walk to School Day and the Walk & Roll Art Contest saw increased participation, reflecting community commitment to active transportation. The Bike Bus at Sexton Mountain Elementary was successful in engaging students and promoting active commuting. Despite achievements, drive rates remain a concern, especially with an earlier elementary start time next year. Continued efforts are needed to promote safe transportation practices and prioritize pedestrian safety.



GOALS FOR THE 2024-2025 SCHOOL YEAR

Looking ahead to the 2024–2025 school year, Beaverton Safe Routes to School aims to build on our current successes and address ongoing challenges. We plan to expand our bike bus program to more schools, enhance our walking school bus routes, and launch new park and walk initiatives. Our focus will also include providing additional support to Title 1 schools to promote equitable access to safe transportation.


A key goal for the upcoming year is to conduct research examining the correlation between attendance improvement and daily walking school bus participation. By demonstrating that daily walking school buses can serve as a preventative measure against chronic absenteeism, we hope to open new funding streams and partnerships with other organizations.

Additionally, we are in the beginning stages of developing a Beaverton Transportation Justice Coalition in collaboration with BIPOC community groups. This coalition aims to culminate in organizing a 'Beaverton BIPOC Bike & Walk' event. We also plan to conduct an inter-agency public safety campaign to address the primary concern shared by parents in our survey: making our crosswalks and intersections safer for families. By continually assessing and improving our approaches, we strive to create safer, healthier, and more sustainable transportation options for all students in the Beaverton School District.



CONTACT US!

 @BeavertonSafeRoutes

 Leah_Biado-Luis@beaverton.k12.or.us

 beaverton.k12.or.us/safe-routes

 1270 NW 167th Place Beaverton, OR 97006