

# DULUTH COMMUNITY SCHOOL COLLABORATIVE

---

USING DATA & COMMUNITY WISDOM TO  
CONNECT, CREATE, MOBILIZE & CELEBRATE  
EQUITABLE SCHOOL COMMUNITIES



# DCSC Vision

Students and families flourish in connected schools and communities



# DCSC Mission

Duluth Community School Collaborative promotes wellbeing and success for Duluth Public Schools students and families by co-creating, celebrating, and mobilizing for equitable educational experiences.





# DCSC Values



**Wellbeing & Justice**



**Shared Power, Accountability,  
& Measurable Results**

**Development & Sustainability**



**Trusting Relationships,  
Authentic Connections**



# Our DCSC Team



**Kellsey Firehammer**  
Youth Development Coordinator  
Myers-Wilkins Elementary School



**Kelsey Gantzer**  
Executive Director



**Angel Nustad-Peluso**  
Director of Programs



**Lisa Parks**  
DCSC Volunteer Coordinator



**Annie Parish**  
Out of School Time Coordinator  
Denfeld High School



**Saraiya Piantek**  
FSCS Coordinator  
Denfeld High School



**Caitlin Smith**  
FSCS Coordinator  
Myers-Wilkins  
Elementary School



**Rachel Thapa**  
FSCS Coordinator  
Lincoln Park Middle  
School



**TBD**  
Community Health Coordinator  
Myers Wilkins Elementary School



# Partners & Supporters

**80+ Active  
Individual  
Volunteers**

- American Indian Community Housing Organization
- Black Men Serving Excellence
- Boys and Girls Clubs of the Northland
- Bridging Health Duluth
- Center City Housing
- City of Duluth Youth Employment Services
- College of St. Scholastica
- Duluth Area Family YMCA
- Duluth Folk School
- Duluth Youth Agency Coalition
- Ecolibrium3
- Essentia Health
- Families Rise Together
- Farm to School
- Fond du Lac Human Services
- Fond du Lac School Linked Mental Health
- Generations Health Care Initiatives
- Human Development Center
- Ignite Afterschool
- Kern and Kompany
- Lake Superior Community Health Center
- Life House
- Lincoln Park Children and Families Collaborative
- Lutheran Social Services
- Men as Peacemakers
- Mentor North
- NAACP Duluth
- National Education Association
- Neighborhood Youth Services
- Northwood Children's Services
- Outside the Box
- Program for Aid to Victims of Sexual Assault
- Planned Parenthood
- Second Harvest
- Steve O'Neil Apartments
- St. Louis County Public Health
- True North AmeriCorps
- SNAP Education – University of MN Extension
- Center for Youth Development – University of MN Extension
- UMD Center of American Indian and Minority Health
- UMD Swenson College of Science and Engineering
- University of Wisconsin Superior – Academic Service Learning
- Valley Youth Center
- YES Duluth
- Zen Eyecare

# DCSC and DPS Partnership Snapshot

DCSC has partnered with DPS as a nonprofit organization since 2001 (previously Grant Community School Collaborative). Financial data below from FY 2022.

## DCSC and Community Support

- Secured ~\$500k in grants, contributions, and in-kind donations in 2022
- DCSC employs 8 FT staff, PT/Seasonal staff, and coordinates volunteers & community partners

## Joint Support

- Secured \$442k MDE Full-Service Community School grant for 2.5 years (DCSC wrote, awarded to DPS/Myers-Wilkins)
- Co-wrote & managed \$5k grant from Northland w/ OEE

## DPS Support

- Employ FT FSCS at Lincoln Park Middle School
- In-Kind Space and DPS time to support FSCS work
- \$155k\* of contracts in 2022 with DCSC (majority of contract funded w/ MDE Grant)



# What the Four Pillars of Community Schools Look Like in Action

Enrichment activities emphasize real-world learning and community problem solving.

Parents, students, teachers, principals, and community partners build a culture of professional learning, collective trust, and shared responsibility using strategies such as site-based leadership teams and teacher learning communities.

After-school, weekend, and summer programs provide academic instruction and individualized support.

Promoting interaction among families, administration, and teachers helps families to be more involved in the decisions about their children's education.

Expanded and Enriched Learning Time and Opportunities

Collaborative Leadership and Practices

A dedicated staff member coordinates support programs to address out-of-school learning barriers for students and families.

Schools function as neighborhood hubs. There are educational opportunities for adults, and family members can share their stories and serve as equal partners in promoting student success.

Active Family and Community Engagement

Mental and physical health services support student success.

Integrated Student Supports

# Four Pillars of Community Schools

Collaborative Leadership Practices

Active Family & Community Engagement

Expanded & Enriched Learning Time & Opportunities

Integrated Student Supports

# Our Current **Family Engagement** Priorities

## **Co-Design Team**

(Monthly meetings, interviews, & school teams)

## **FSCS Leadership Team**

(Monthly meetings & decision making)

Helping you help your student **attend school consistently**  
(90% of days)

Helping you complete the **School Climate Survey**  
(fall and spring)

**Building trusting, authentic relationships with you & school staff**  
(Events, conferences, communication)

Helping school feel **safe & welcoming to you**  
(Spaces & culture)



# Family involvement is important for this to work!

## Shared Power, Accountability and Measurable Results:

Shared-power partnerships equally value humanity, community wisdom, youth voice, and reliable community data in the development of shared goals. Using results-based leadership practices, we hold ourselves and each other accountable for achieving measurable results.

*Families are the child's first teacher*

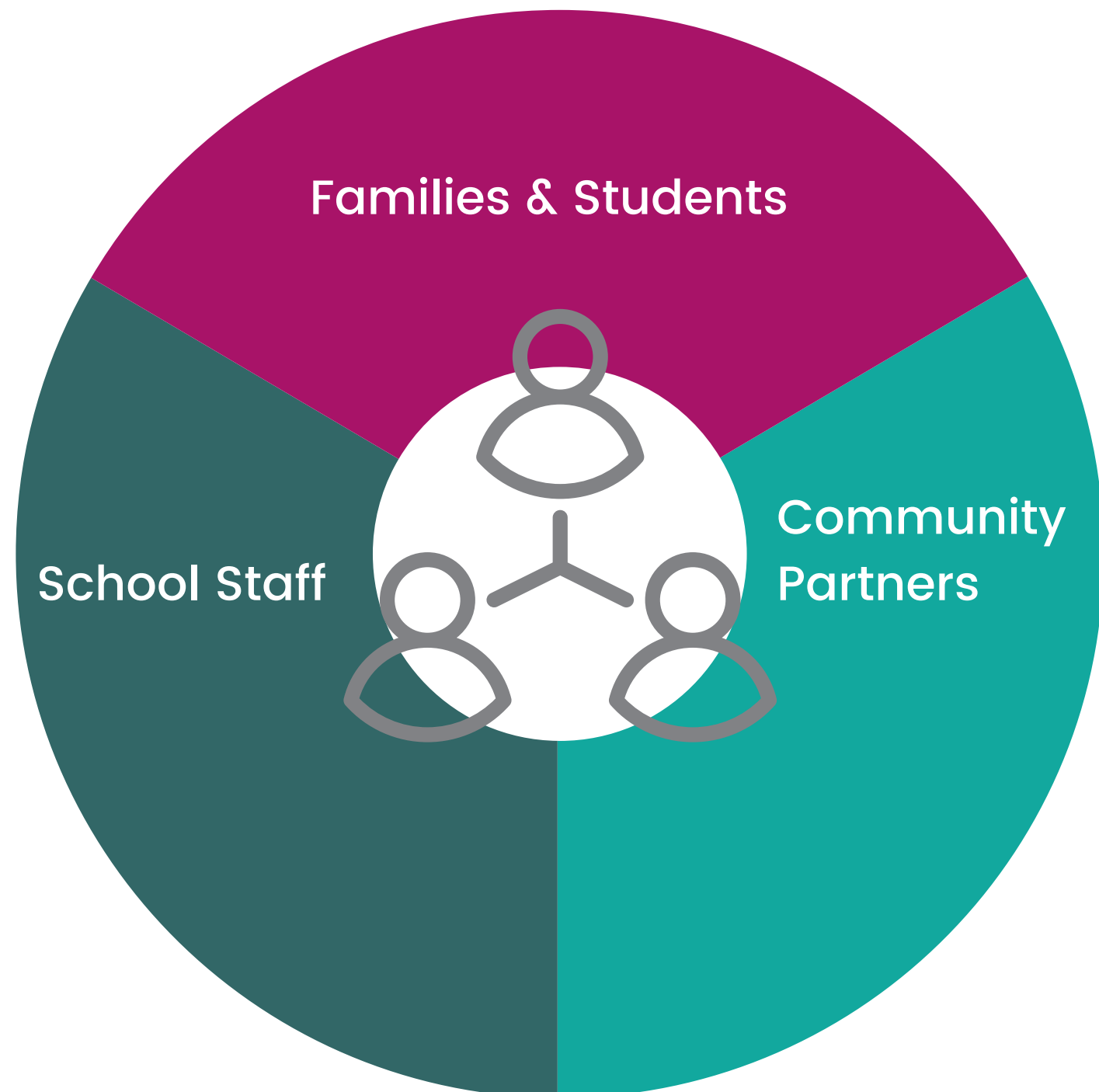
*Families are the experts on their needs*



# Full-Service Community School

---

## Leadership Team



### Monthly Meetings

- **Get updates on the strategies from the principal and the FSCS Coordinator**
- **Provide input and help find resources to make the strategies happen**
- **Help update and develop strategies with the team**



# Full-Service Community School

## Co-Design Team

### Monthly Meetings with a School Team

1. Learn about the co-design model and the strategies your school is implementing
2. Hear what changes will be made based on your conversations

### Host Conversations

1. Have conversations with people you know who are impacted by the strategies
2. Let them know what team is doing to adapt the strategy based on their input

### Share Learnings from Conversations to the School Team

Inform team what really matters to people impacted by the strategy

Talk to your FSCS Coordinator to learn more!

# Expanded and Enriched Learning Time and Opportunities

**We develop and lead out-of-school time programming, as well as coordinate partner programs in the schools and connect students to programs outside of the school.**

**What types of programming do we offer?** Academic tutoring, athletic/sports, arts, emotional wellbeing, STEM, nature-based, culturally-specific programming

**Who leads programs?** Our staff, teachers, and community partner organizations, with the support of volunteers.

**When do programs happen?** Monday - Thursday during the school year and coordinated with summer school in the summer

**What makes programs accessible?** Free transportation, deep connection with school staff, afterschool snack/meal



# Expanded and Enriched Learning Time and Opportunities









# Integrated Student Supports

**Food and Basic Need Pantries at three Community Schools:** groceries, hygiene items, school-day snacks, clothing, school supplies, etc.

**Community Health Coordinator 1:1** unique support for students & families including dental and medical appointments, eye glasses support, access to community resources, transportation, etc.

**Fresh Fruits and Vegetables Program:** 2x/week snack to all Myers-Wilkins students





# **WHY** are we **Community Schools?**

**Because we know we need to  
do better for our kids  
at Myers-Wilkins, Lincoln  
Park, and Denfeld**



**Especially in the  
areas of**

- **Equity in Student Achievement**
- **School Climate**
- **Family Engagement**



# Strategy Map

Goals, Objectives, Measurable Indicators, & Strategies

OUTCOMES

GOALS

OBJECTIVES

INDICATORS

STRATEGIES

**District Strategic Plan Goals**

Increased Equity in Student Achievement

Every Student is Supported

Improved Systems

SIPs, A&I Plan, & District-wide implementation goals

Indicators we already have access to

**STARTED HERE:**  
Most strategies FSCS Coordinators were already implementing

**Goal 1: Increase Equity in Student Achievement**

**Obj 1.1** Increase consistent attendance rates of protected class students at MW, LPMS, and DHS from 64.10% (2022 baseline data) to 68.10% by the end of the 2026 school year and 74.10% by the end of the grant period.

**Obj 1.2** Increase graduation rates of protected class students at Denfeld from 62.57% (2022 baseline data) to 66.57% in 2025-26 and to 72.57% by the end of the grant period.

SIP Strategy Outcomes disaggregated by protected class designation

Increased time in class (nurse visits, absences, & behavior)

On-track credit attainment

Tiered Family Engagement  
Co-Design

MW Community Health Coordination  
LPMS School Pantry  
LPMS Restorative Practices  
DHS Relevant Life Skills Programming

DHS Out of School Time Program (DASH)

**Goal 2: Increase Positive School Climate**

**Obj 2.1** Increase the number of secondary students reporting feeling safe at school via PBIS school climate survey from 57% at the high school and 69.1% at the middle school (2022 baseline data) to 90% by 2025-26 and 97% by the end of the grant period.

**Obj 2.2** Increase the number of 3rd-5th grade students reporting that students at my school treat each other well via PBIS school climate survey from 26.4% (2022-23 baseline data) to 45% by 2025-26 and 62% by the end of the grant period.

School Climate Survey increase in positive response to question about feeling safe at school

School Climate Survey increase in positive response to question about students treat each other well

LPMS Restorative Practices  
LPMS School Pantry  
DHS Relevant Life Skills Programming  
DHS Out of School Time (DASH)  
DHS Basic Needs Supplies

MW Out of School Time Programs  
MW Student Leadership Teams

**Goal 3: Increase Active Family & Community Engagement**

**Obj 3.1** Increase family response rate to the school climate survey across all schools from 60 (2022-23 baseline data) to 500 by the end of the grant period.

**Obj 3.2** Increase the number of families engaged in providing strategy improvement input to the Continuous School Improvement Teams across all schools from 1 (2022-23 baseline data) to 50 by the end of the grant period.

Increased family response rate to school climate survey

Increased number of family members participating in providing feedback to school improvement teams

Tiered Family Engagement  
Co-Design

# Goals for Increasing Equity in Student Achievement:



Increase **consistent attendance** rates of protected class students at MW, LPMS, and DHS from 64.10% (2022 baseline data) to 68.10% by the end of the 2026 school year



Increase **graduation rates** of protected class students at Denfeld from 62.57% (2022 baseline data) to 66.57% in 2025-26



# Goals for Increasing a Positive School Climate:



Increase the number of secondary students reporting **feeling safe at school** via PBIS school climate survey from 57% at the high school and 69.1% at the middle school (2022 baseline data) to 90% by 2025-26



Increase the number of 3rd-5th grade students reporting that **students at my school treat each other well** via PBIS school climate survey from 26.4% (2022-23 baseline data) to 45% by 2025-26

# Goals for Increasing Active Family Engagement:



**Increase family response rate to the school climate survey across all schools from 60 (2022–23 baseline data) to 500 by the end of the grant period.**



**Increase the number of families engaged in providing strategy improvement input to the Continuous School Improvement Teams across all schools from 1 (2022–23 baseline data) to 50 by the end of the grant period.**





Thank You!

