



ENROLLMENT PROJECTION 2013-14

Independent School District 877
Buffalo-Hanover-Montrose

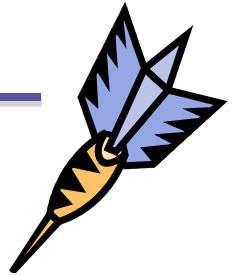
November 26, 2012



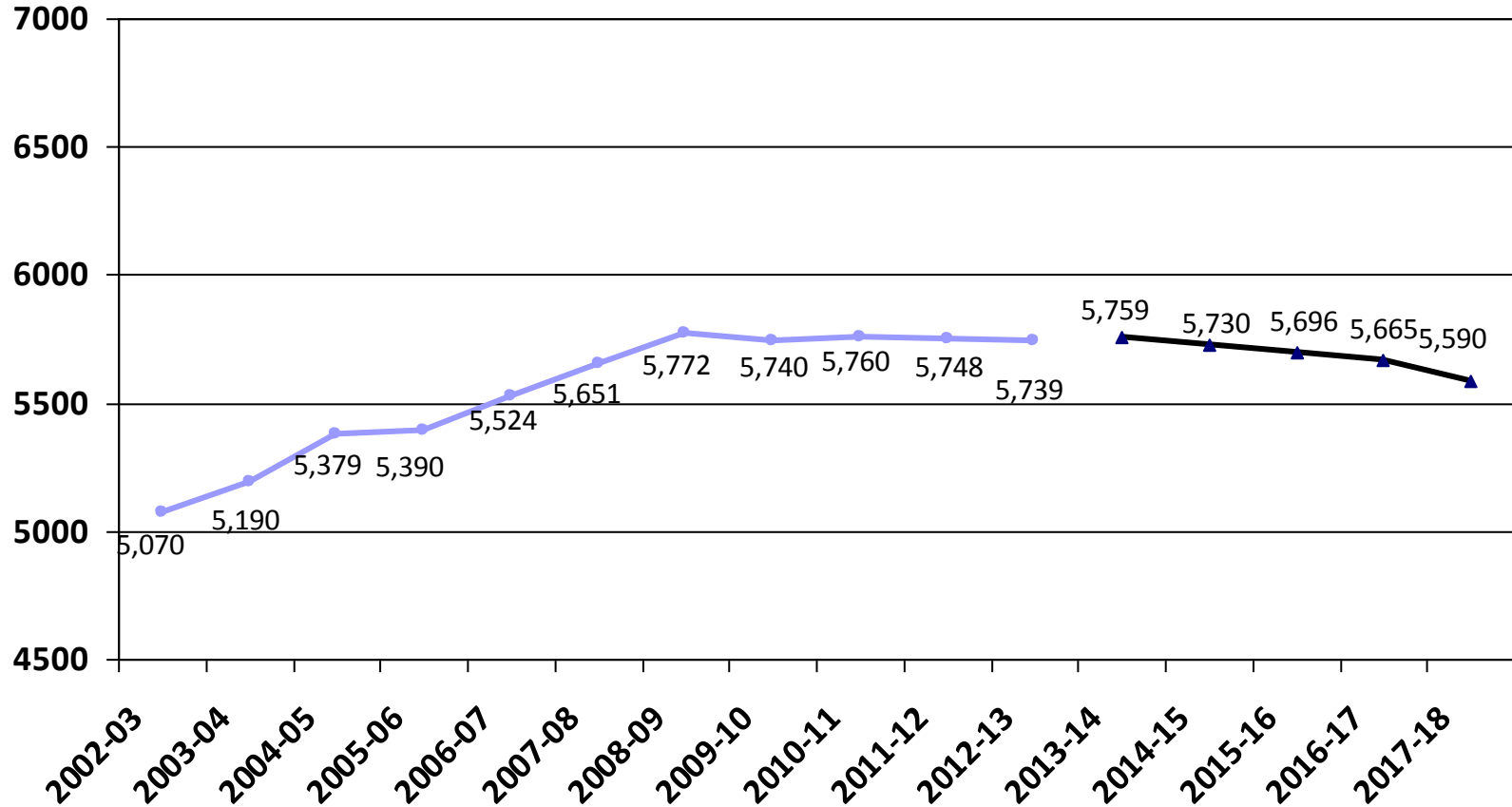
Making a Difference!

Enrollment Projection Report

- Review of K-12 enrollment as of Oct. 1st
- Resident enrollment
- Open enrollment & tuition
- Nonpublic enrollment
- Fall vs. spring enrollment
- Review 2012-13 enrollment projection
- 2013-14 enrollment projection



Historical and 2013-14 Projected K-12 Enrollment as of Oct. 1st





Review of K-12 Enrollment as of Oct. 1st

- The school district growth trend came to a halt in the 2009-10 school year and we are slightly ahead with the projection for 2012-13.
- The five-year growth average is decreasing and currently at 18 students/year or .33%.
- Total enrollment growth for the past five years is 91 students or 1.6%.

	2008-09	2009-10	2010-11	2011-12	2012-13
K-12 enrollment	5,772	5,740	5,760	5,734	5,742
Change over prior year	121	-32	20	-26	8
% change	2.14%	-0.55%	0.35%	-0.45%	.14%

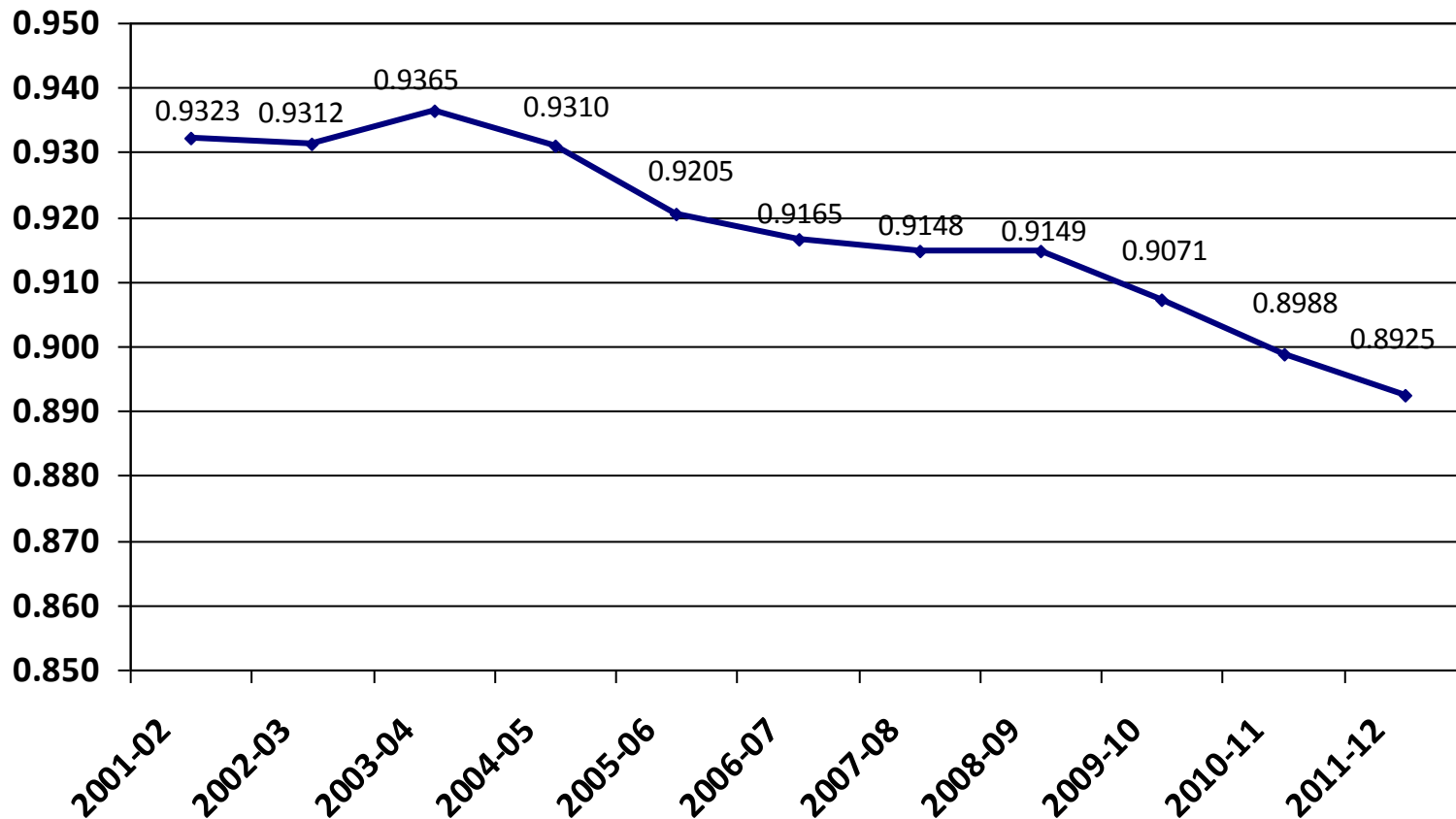


Total Resident Students Enrolled in ISD 877 as of June 30th

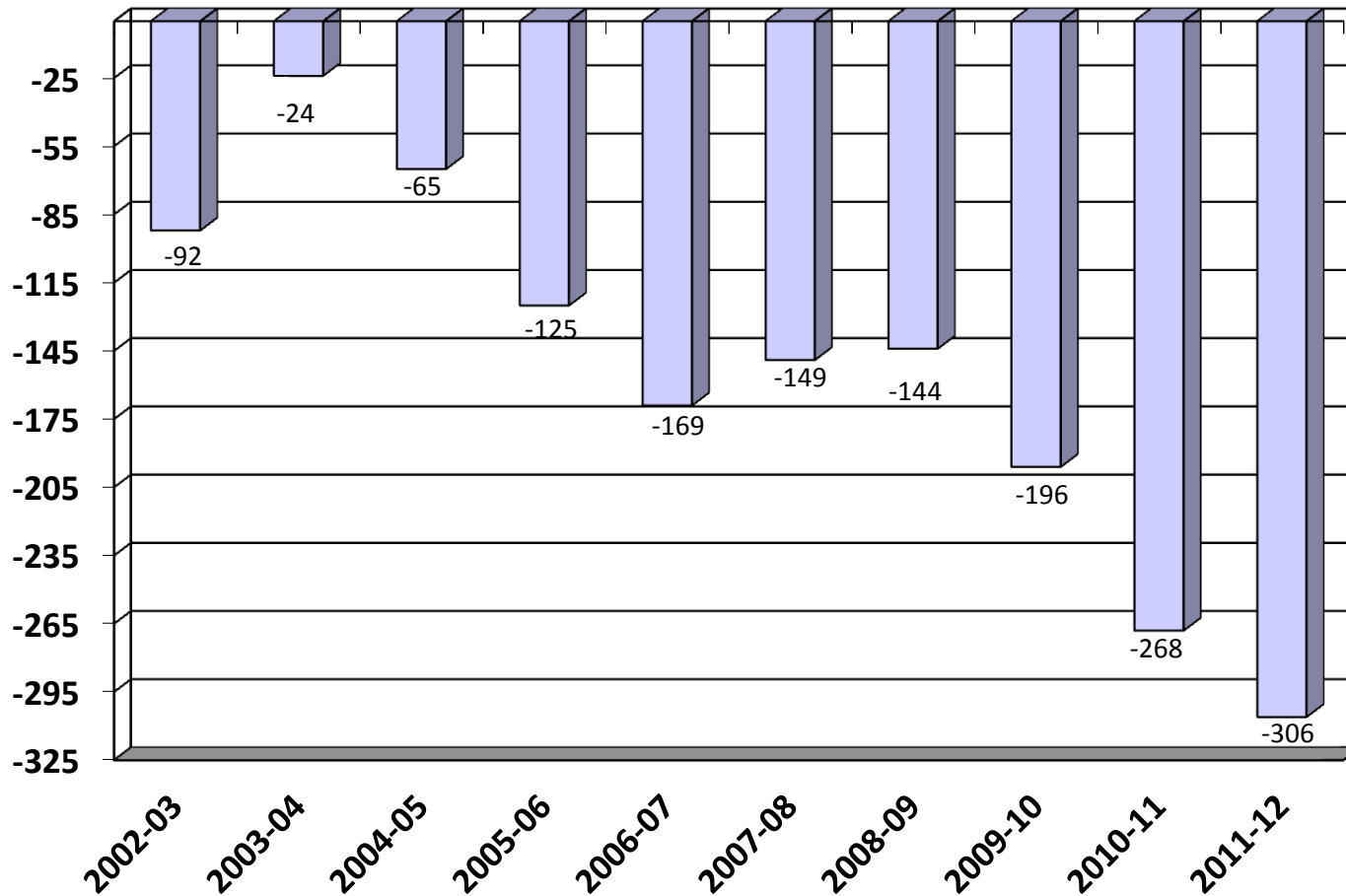
- BHM's resident population displays similar trends as the school district's enrollment

	2007-08	2008-09	2009-10	2010-11	2011-12
Residents served	5,301	5,396	5,369	5,394	5,358
Residents going elsewhere	494	501	550	607	645
Total Residents	5,795	5,897	5,919	6,001	6,003
Change over prior year	78	102	22	82	2
% change	1.4%	1.8%	0.4%	1.39%	.03%

Total Resident Students Enrolled in ISD 877 as of June 30th



Open Enrollment & Tuition Net Gain/Loss as of June 30th

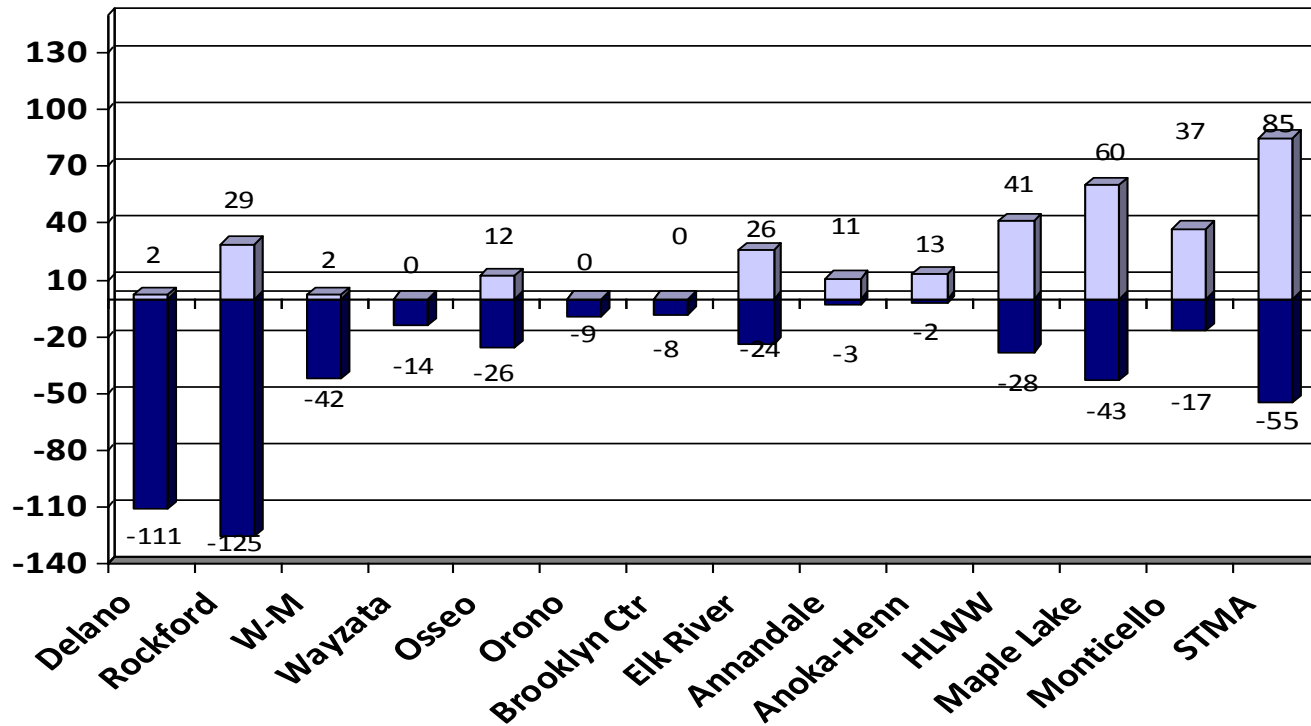




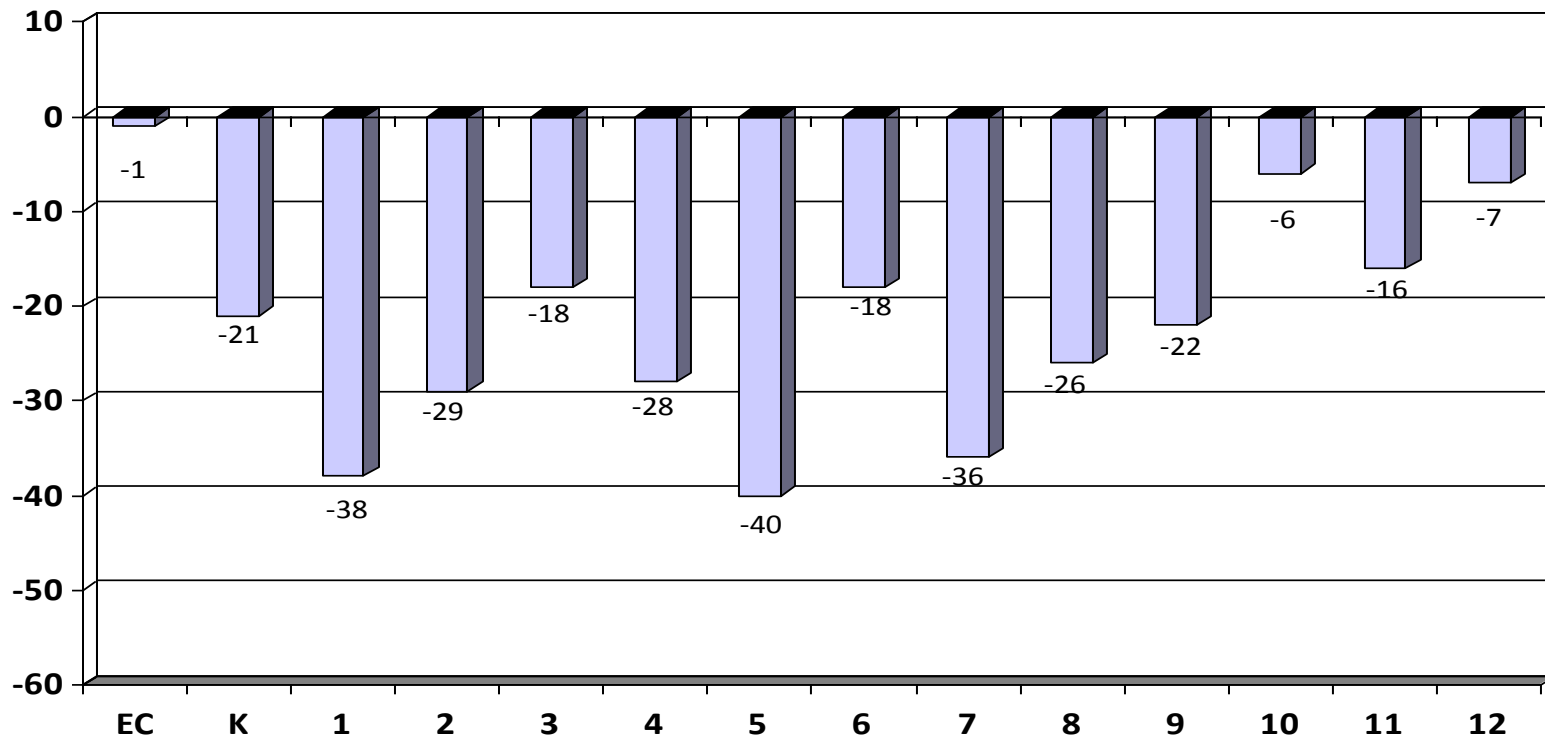
2011-12 Open Enrollment & Tuition Gain/Loss by District as of June 30th

District	In	Out	Net	
Delano	2	-111	-109	
Rockford	29	-125	-96	
Watertown-Mayer	2	-42	-40	
Wayzata	0	-14	-14	<u>Other Tuition</u>
Osseo	12	-26	-14	WTC -35
Orono	0	-9	-9	MAWSECO -8
Brooklyn Center	0	-8	-8	Mn Transitions -9
Elk River	26	-24	2	Swan River Charter -10
Annandale	11	-3	8	Houston (online) -32
Anoka-Hennepin	13	-2	11	
Howard Lake-Waverly-Winsted	41	-28	13	
Maple Lake	60	-43	17	
Monticello	37	-17	20	
St. Michael-Albertville	85	-55	30	

2011-12 Open Enrollment & Tuition Gain/Loss by District as of June 30th



2011-12 Open Enrollment & Tuition by Grade as of June 30th

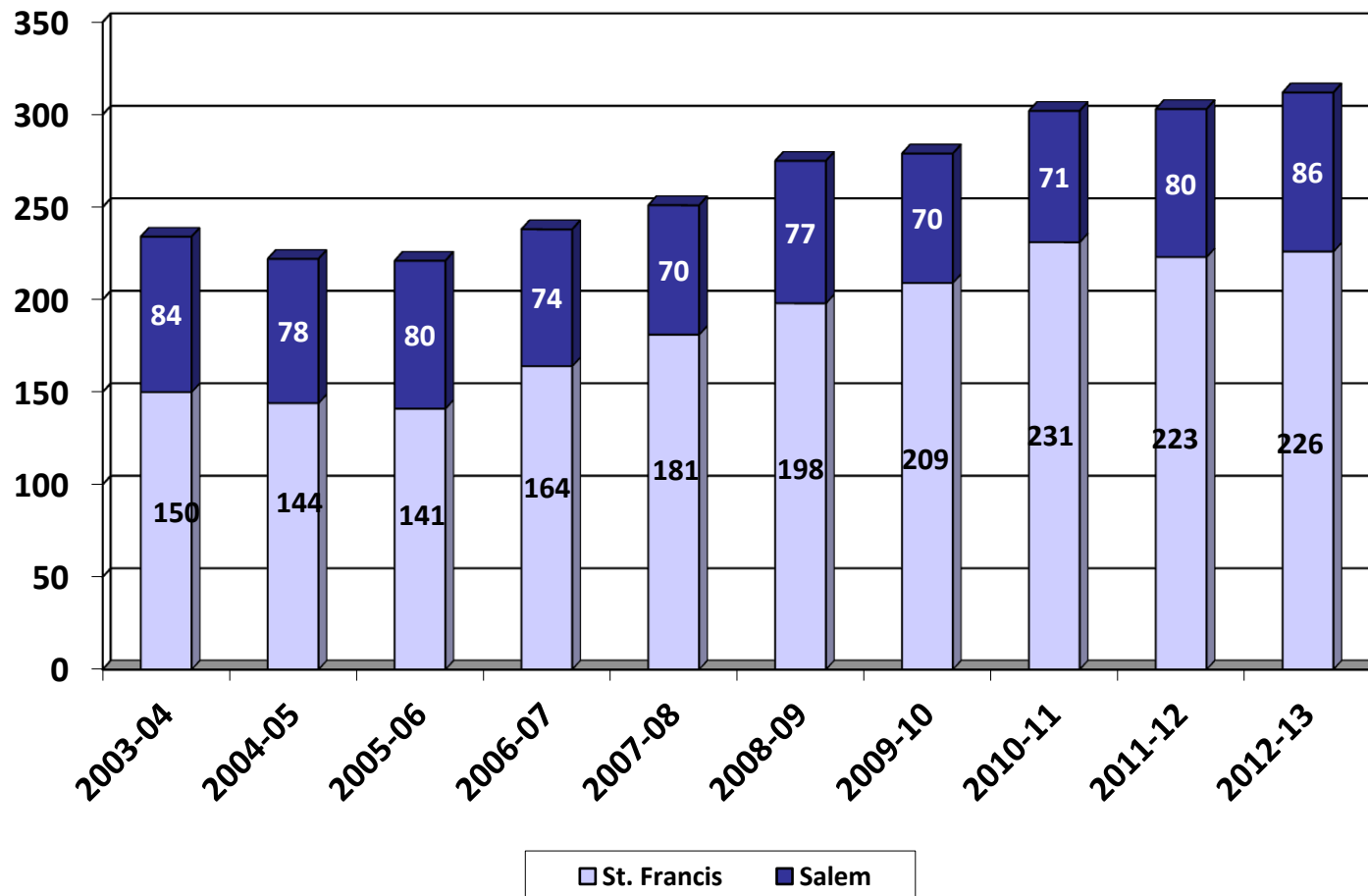


Nonpublic History

- Two nonpublic schools in the BHM district: St. Francis Xavier, Buffalo and Salem Lutheran, Loretto.
- Both schools serve students from kindergarten through 8th grade.

	03-04	04-05	05-06	06-07	07-08	08-09	09-10	10-11	11-12	12-13
Salem	84	78	80	74	70	77	70	71	80	86
St. Francis	150	144	141	164	181	198	209	231	223	226
Total	234	222	221	238	251	275	279	302	303	312
# Change	-13	-12	-1	17	13	24	4	23	1	9
% Change	-5.3%	-5.1%	0.5%	7.7%	5.5%	9.6%	1.5%	8.2%	.33%	2.97%

Nonpublic History



2011-12 Enrollment

Fall vs. Spring

- Historically, the district's K-12 enrollment decreases from October 1 to June 1.
- Most of the enrollment drops happen in grades 9-12.

	Oct. 1st, 2011	Jun. 1st, 2012	Net
K	417	407	-10
Gr. 1-5	2,244	2,233	-11
Gr. 6-8	1,279	1,265	-14
Gr. 9-12	1,794	1,700	-94
Total	5,734	5,605	-129

Historical Enrollment

Fall vs. Spring

- The district had one flat year (2006-07) of enrollment growth. All other years have declined during the year.

	K	Gr. 1-5	Gr. 6-8	Gr. 9-12	Net
2002-03	-1	33	14	-51	-5
2003-04	5	-37	-3	-49	-10
2004-05	-1	0	3	-55	-53
2005-06	4	-1	-9	-56	-62
2006-07	-2	-25	10	-33	0
2007-08	9	3	3	-55	-40
2008-09	0	0	-24	-84	-108
2009-10	-2	14	-17	-58	-63
2010-11	1	-11	-10	-63	-83
2011-12	-10	-11	-14	-94	-129

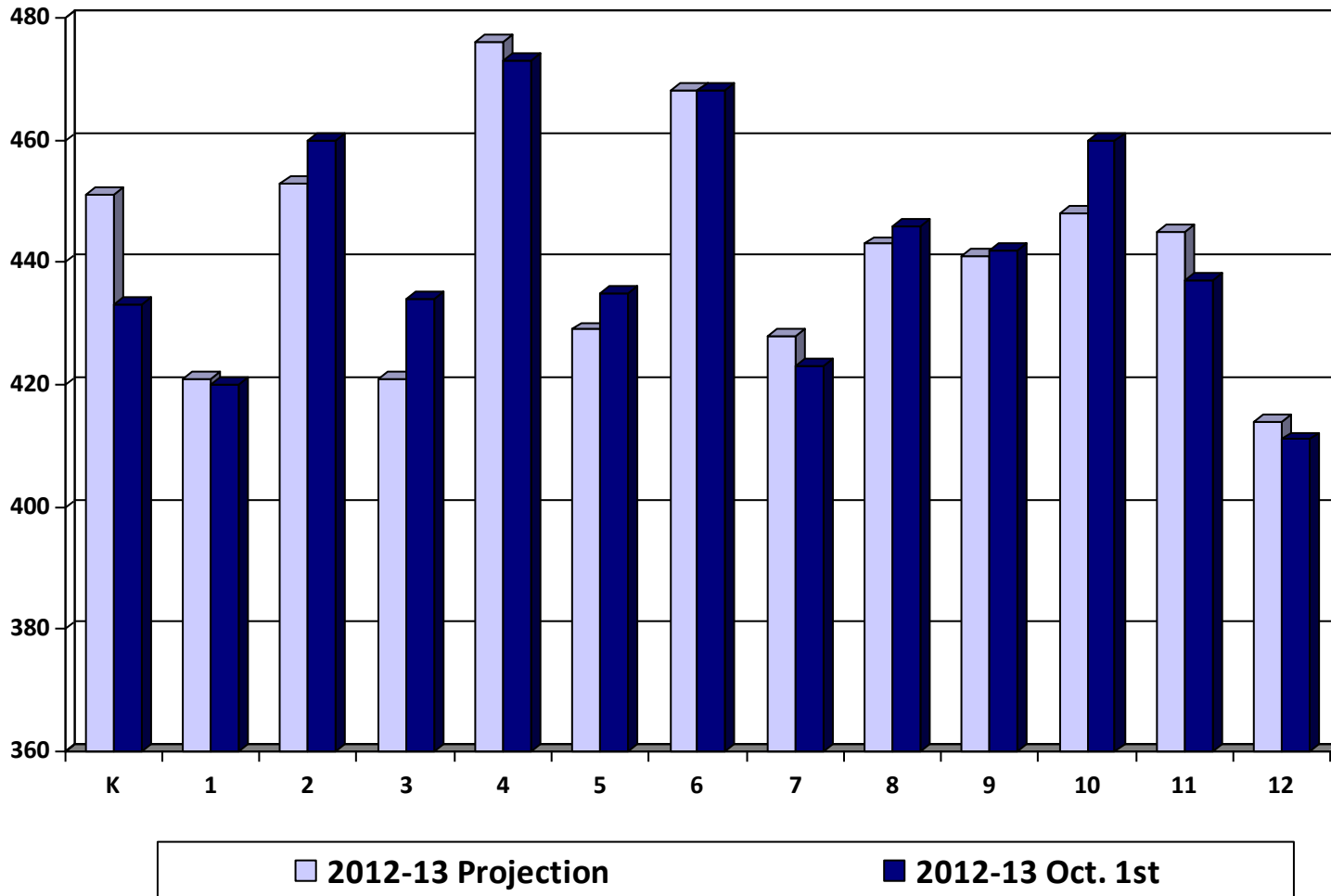
Review of 2012-13 Enrollment Projection

- Last year's enrollment projection was under-estimated by 3 students.
- Our internal monthly enrollment reports adjust down post-secondary and shared time students.
- The official Oct. 1st MARSS submission by MDE will report a higher enrollment with post-secondary and shared time students.

	2012-13 Projection	2012-13 Oct. 1st	Difference
K	451	433	-18
Gr. 1-5	2,200	2,222	22
Gr. 6-8	1,340	1,337	-3
Gr. 9-12	1,748	1,750	2
Total	5,739	5,742	3

Review of 2012-13

Enrollment Projection by Grade





Enrollment Projection Data

- The district uses the Schoolfinances.com enrollment projection model.
- The model allows schools to develop enrollment projections based on three different sets of data:
 - **October 1st MARSS submission**
 - **End of Year ADM** is generally used for financial forecast
 - **District Data** allows schools to enter enrollment history taken at any time, resident ADM or any other historical data by grade



Kindergarten Projection Methods

- **Hold constant** maintains the 2012-13 kindergarten level.
- **Linear projection** is a straightforward mathematical projection based on nothing more than the past five years of data.
- **County birth method** uses the total number of live births in Wright County and examines what percentage of those births enroll in kindergarten. The projection is based on the average percentage of the last four years.
- **Zip code method** examines the zip codes in the district and uses a linear projection of live births on the last four years of data and computes the projected enrollment based on the lowest, average, and highest ratios.
- **District determined method** examines county birth rates in Wright County and compares that to actual student enrollment numbers in the District and projects that percentage for the next five years.



Kindergarten Projection Methods

Birth Year	Kdgn Enroll Year	Wright Co. Births	Actual Kdgn Enrollment	% of Wright Co. Births Enrolled
2001	2006	1,499	494	33.0%
2002	2007	1,679	413	24.6%
2003	2008	1,926	464	24.1%
2004	2009	1,888	434	23.0%
2005	2010	2,023	455	22.5%
2006	2011	2,152	417	19.4%
2007	2012	2,183	433	19.8%
2008	2013	2,095	411*	19.6%*
2009	2014	1,943	381*	19.6%*
2010	2015	1,900	373*	19.6%*
2011	2016	1858	364*	19.6%*

* Projected K enrollment based on County births

Kindergarten Projection Methods

- Using Oct. 1st district data

	08-09	09-10	10-11	11-12	12-13	13-14	14-15	15-16	16-17	17-18
Actual enrollment	464	434	455	417	433					
Hold constant						433	433	433	433	433
Linear projection						418	411	404	398	391
Wright Co. births						464	436	418	409	394
Zip code method - L						411	376	357	363	341
District Determned Method						411	381	373	364	356

Enrollment Projection Methods

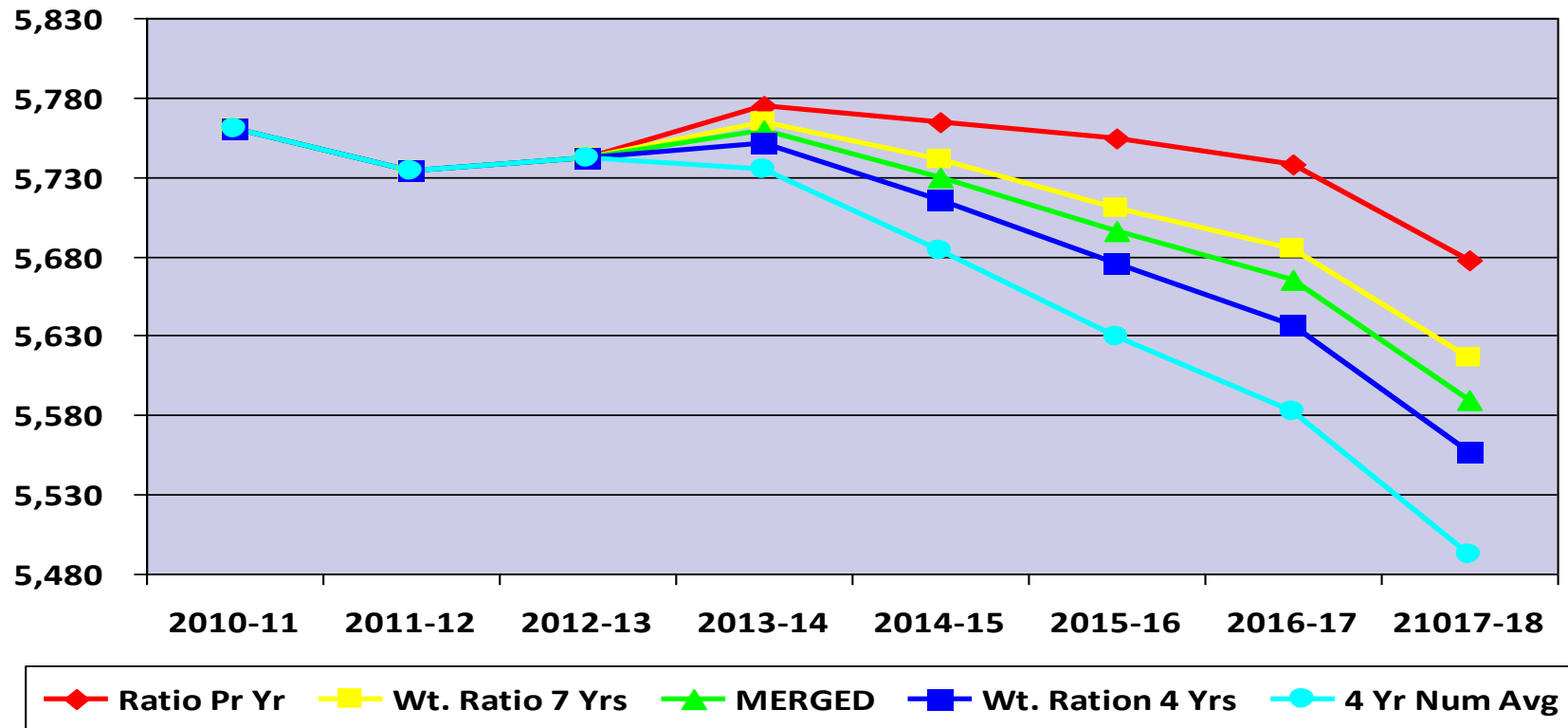
- After the kindergarten enrollment projection is complete, the overall K-12 enrollment is determined by a variety of methods:
 - Cohort Survival Method
 - Weighted Cohort Survival Method
 - Numerical Survival Method
 - Weighted Numerical Survival Method
 - Merged Method

Projection Methods Comparison

- Using Oct. 1st district data, eighteen different variations were examined.
- The following five were selected for detailed analysis:

	10-11	11-12	12-13	13-14	14-15	15-16	16-17	17-18
Ratio Prior Year	5,760	5,734	5,742	5,775	5,765	5,754	5,738	5,678
Wt Ratio 7 Yrs	5,760	5,734	5,742	5,765	5,741	5,710	5,685	5,616
Merged	5,760	5,734	5,742	5,759	5,730	5,696	5,665	5,590
Wt Ratio 4 Yrs	5,760	5,734	5,742	5,751	5,715	5,675	5,637	5,557
4 Yr. Num. Average	5,760	5,734	5,742	5,735	5,684	5,629	5,582	5,492
Max Difference				40	81	125	156	186

Projection Methods Comparison

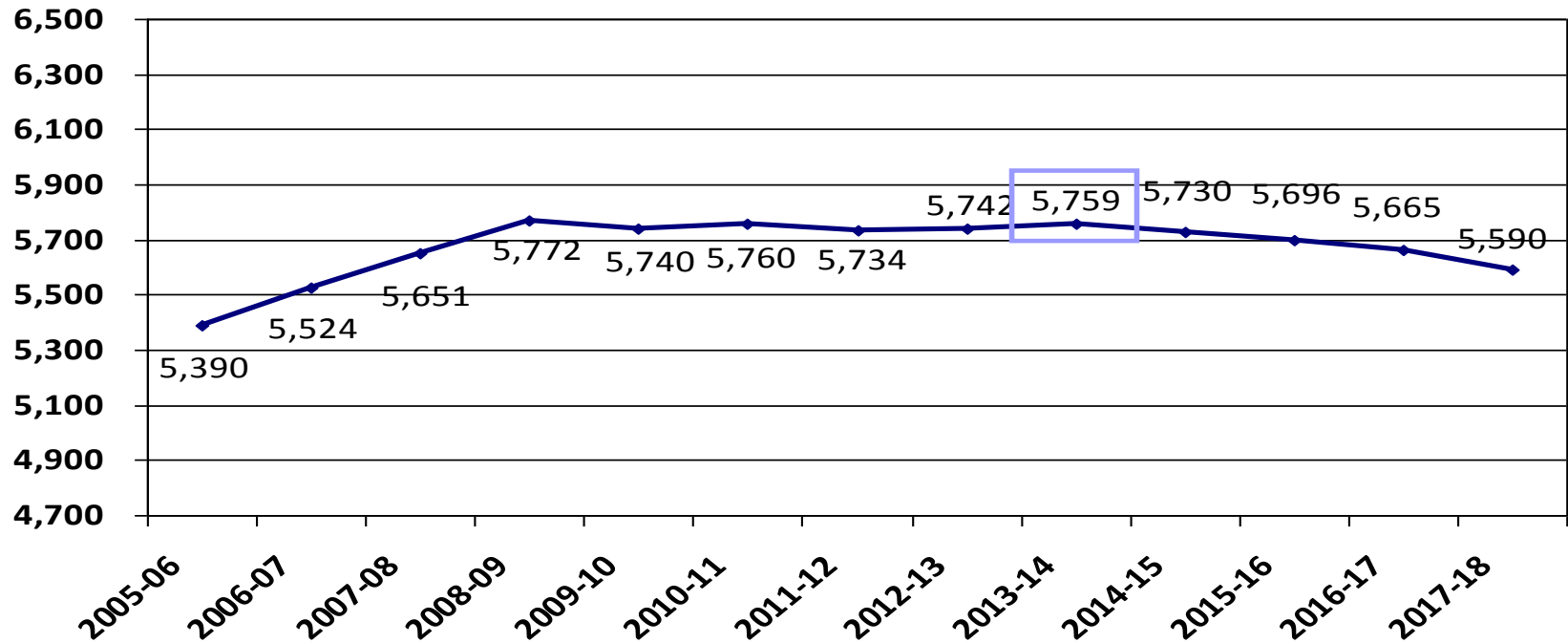




2013-14 Enrollment Projection

- Factors considered: housing market, economic conditions, Wright County births, open enrollment, budget reductions, and new programs (ADED K, Quest, STEM)
- Merged Method
- K-12 Enrollment 5,759
- Increase of 17 students or 0.30%

2013-14 Enrollment Projection



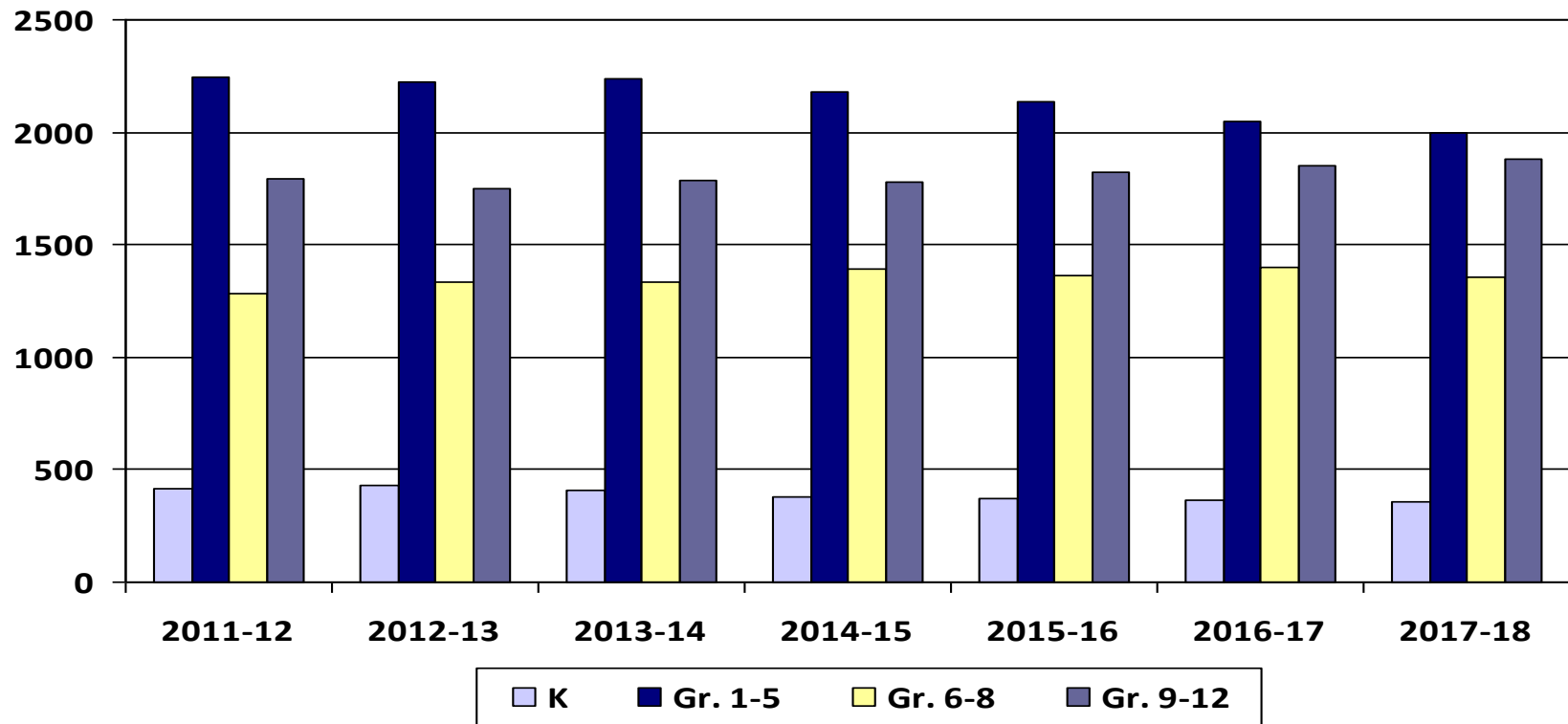


2013-14 Enrollment Projection by Grade Groupings

- With future enrollments, need to consider building capacity:
 - BHS – 1,935 PHX – 64 and PRIDE – 25
 - BCMS – 1,375
 - Elementary – 3,200

	2012-13	2013-14	2014-15	2015-16	2016-17	2017-18
K	433	411	381	373	364	356
Gr. 1-5	2,222	2,234	2,180	2,137	2,049	1,995
Gr. 6-8	1,337	1,331	1,391	1,364	1,401	1,356
Gr. 9-12	1,750	1,783	1,778	1,822	1,851	1,884
Total	5,742	5,759	5,730	5,696	5,665	5,591
		17	-29	-34	-31	-74
		0.30%	-0.50%	-0.59%	-0.54%	-1.31%

2013-14 Enrollment Projection by Grade Groupings

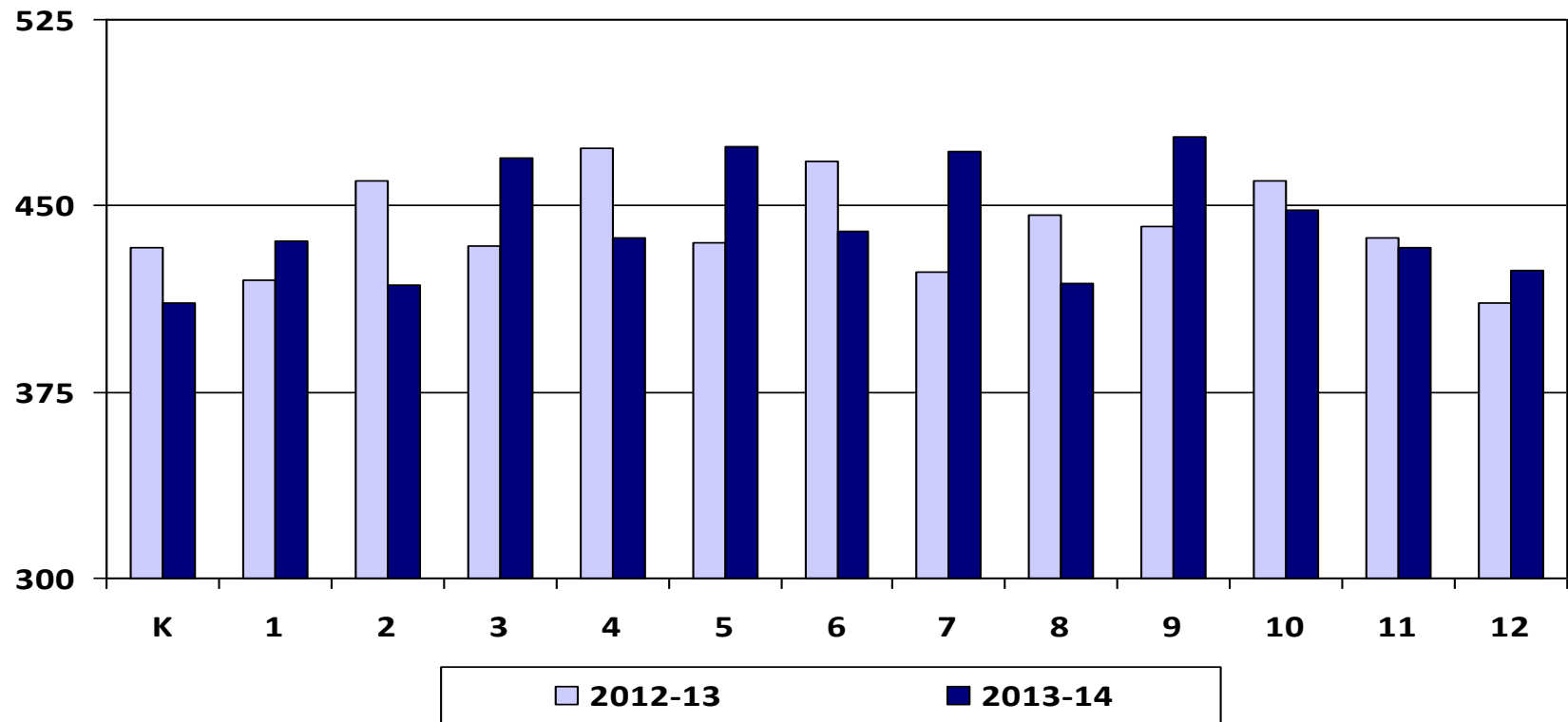




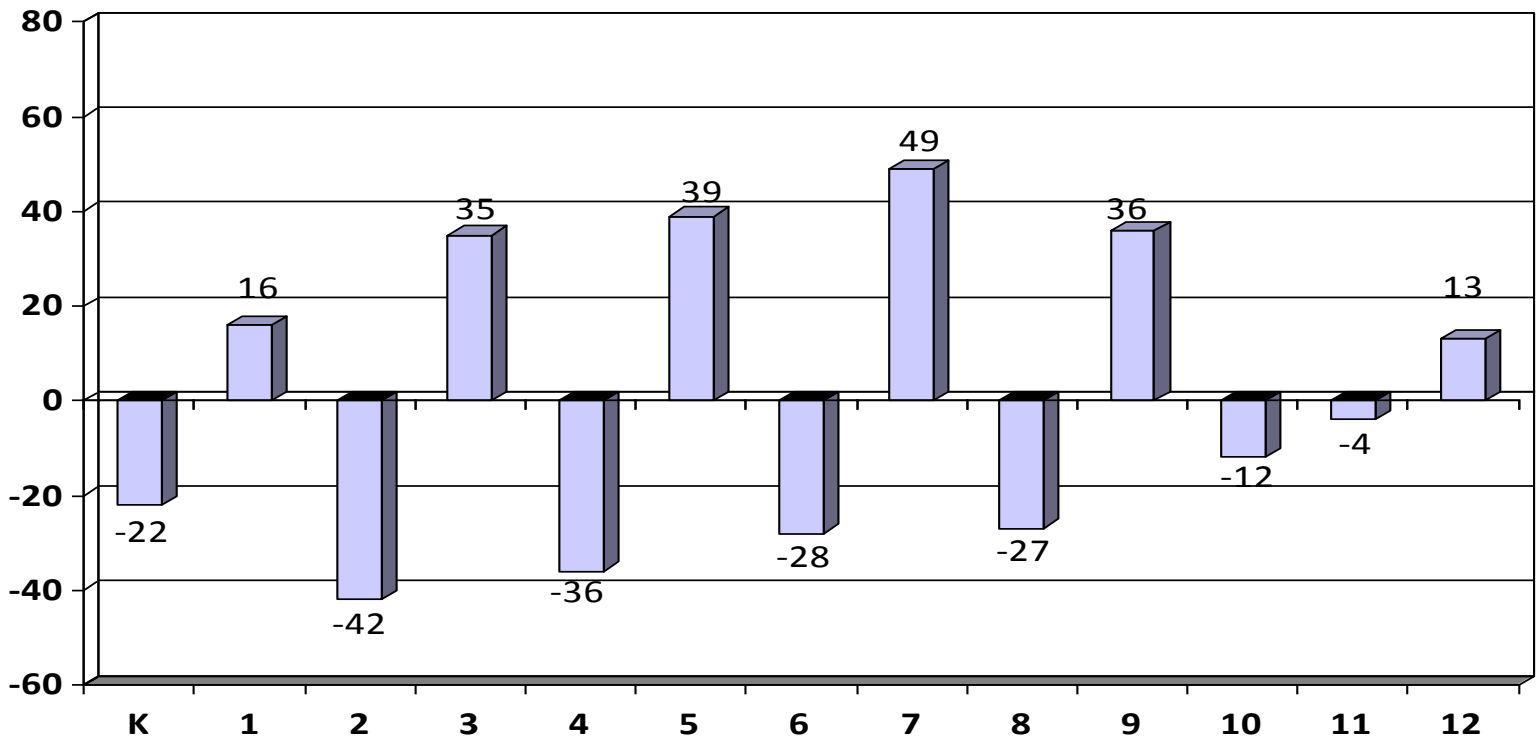
2013-14 Enrollment Projection by Grade

	2013-14	2014-15	2015-16	2016-17	2017-18
K	411	381	373	364	356
1	436	413	383	375	366
2	418	433	412	382	373
3	469	425	442	419	389
4	437	471	428	444	422
5	474	438	472	429	445
6	440	479	442	477	433
7	472	444	483	446	481
8	419	468	439	478	442
9	478	451	501	472	512
10	448	484	456	507	477
11	433	422	456	429	478
12	424	421	409	443	417
Total	5,759	5,730	5,696	5,665	5,591

2012-13 & 2013-14 Enrollment Projection by Grade



2013-14 Enrollment Change by Grade





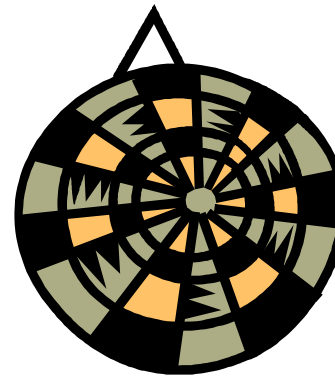
WADM Report

- The weighted average daily membership (WADM) projection shows a relatively flat projection in student aid.
- Keep in mind the district's enrollment history tends to decline from Oct. 1st to June 1st.

	2013-14		2014-15		2015-16		2016-17	
	Enroll	WADM	Enroll	WADM	Enroll	WADM	Enroll	WADM
HK	23	9	22	8	21	8	21	8
K	411	252	381	233	373	228	364	223
Gr. 1-3	1,323	1,474	1,271	1,419	1,237	1,378	1,176	1,311
Gr. 4-6	1,351	1,432	1,388	1,471	1,342	1,423	1,350	1,431
Gr. 7-8	891	1,160	912	1,184	922	1,199	924	1,201
Gr. 9-12	1,783	2,318	1,778	2,310	1,822	2,369	1,851	2,406
ECSE	113	142	105	131	103	129	100	126
M.C.P.U		0		7		5		7
Total	5,895	6,787	5,857	6,763	5,820	6,739	5,786	6,713

Conclusion

- Uncertain economic factors make enrollment projections difficult.
- BHM's enrollment is projected to decline slightly over the next three to five years.



5,759