



2024-25 Local Service Plan

A framework for our partnership with
school districts in Clatsop, Columbia,
Tillamook and Washington counties

Role of the School Board

ORS 334.175

Each year an Education Service District's Local Service Plan must be:

1. adopted by the board of the education service district
2. approved on or before March 1 by resolution of two-thirds of the component school districts that have at least a majority of the pupils



Navigating the Local Service Plan Document



- P. 9 - List of core services
- P. 12 - List of menu services
- P. 23 - SSA technical assist. plan
- P. 27 - Board resolution/action
- P. 28 - Grant and value-add services
- P. 33 - LSP financial summary
- P. 36 - Summary of current services
your district is participating in

Ways We're Working Together to Support Neah-Kah-Nie Kids (Page 36)



- **Administration:** \$780,489 awarded through a combination of regional and district-specific competitive grants and state contracts, including a \$665,000 GEAR UP grant
- **Early Learning:** 15 EI/ECSE evals, 15 EI/ECSE enrollment, early literacy support, etc.
- **Instruction:** integrated guidance support, migrant education program, Oregon Virtual Education (ORVED), etc.
- **Special education:** 13 specialists support the district with autism, hearing and vision services, speech-language pathology, etc.
- **Technology:** security, online learning apps, Synergy student information system, etc.





About the 2024-25 Local Service Plan

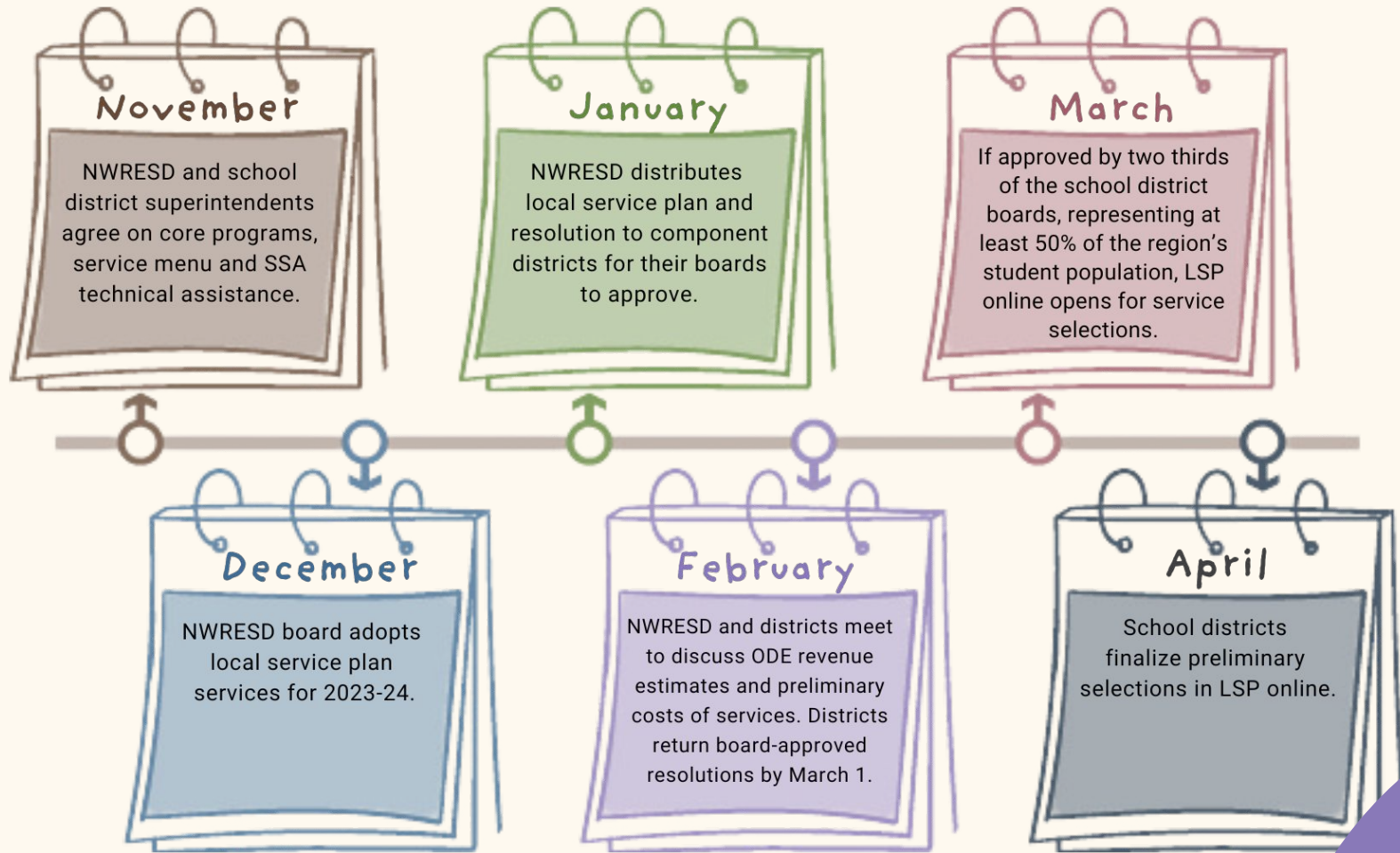
90% of the SSF formula for education service districts is allocated to school districts

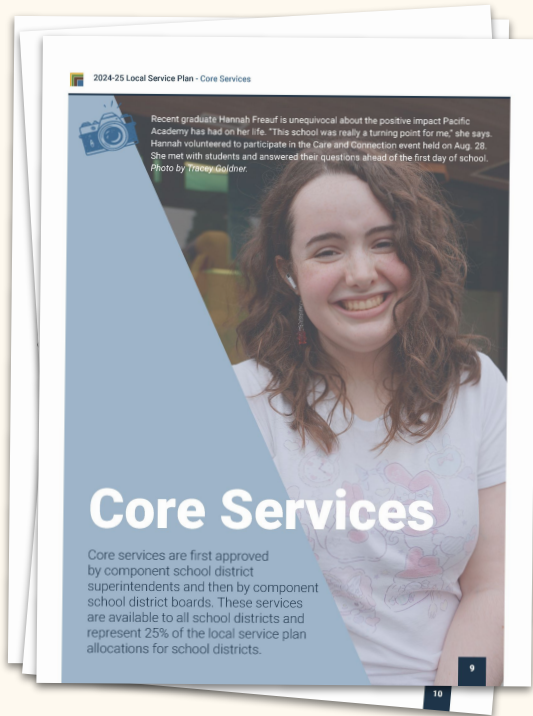
10% of
SSF
formula for
ESDs funds
operations

75% of school district allocations go to individual school district accounts

25% of school district
allocations are spent
on core services, i.e.
shared services



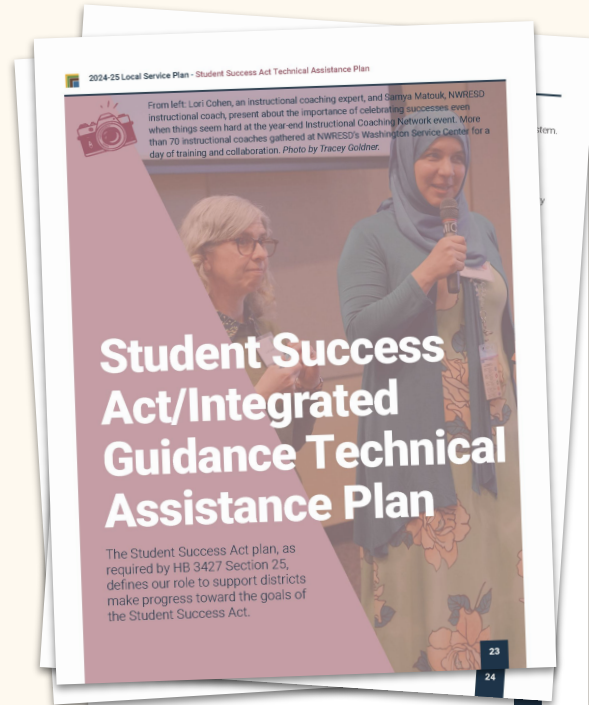




P. 9



P. 12



P. 23

2024-25 Estimates

Core Services

These estimates are based on a \$10.2 billion State School Fund. Estimates for Beaverton and Hillsboro are based on a 4% rollout.

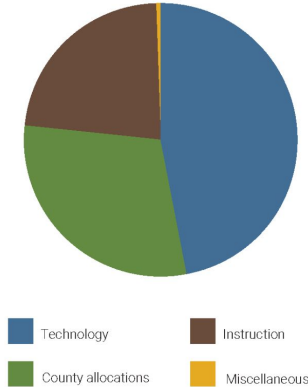
Core Services: \$5,425,601

- Technology: \$3,083,724
- County Allocations: \$2,264,461
- Instruction: \$1,482,859
- Miscellaneous: \$27,634

Beaverton and Hillsboro School Districts:

- Regional Innovations: \$920,765
- Professional Development: \$512,312

Total Core Services: \$6,858,678



County Allocations



Clatsop County

\$379,323



Columbia County

\$457,273



Tillamook County

\$314,562



Washington County

\$1,113,302

2024-25 Estimates

Service Credits

These estimates are based on a \$10.2 billion State School Fund.



Clatsop County

Total - \$2,125,801

Astoria - \$726,666
Jewell - \$96,998
Knappa - \$228,705
Seaside - \$649,509
Warrenton Hammond - \$423,923



Columbia County

Total - \$2,936,799

Clatskanie - \$320,309
Rainier - \$340,020
Scappoose - \$890,769
St. Helens - \$1,115,156
Vernonia - \$270,545



Tillamook County

Total - \$1,452,019

Neah-Kah-Nie - \$325,053
Nestucca Valley - \$258,769
Tillamook - \$868,197



Washington County

Total - \$9,762,184

Banks - \$450,182
Forest Grove - \$2,471,104
Gaston - \$227,849
Sherwood - \$1,909,727
Tigard-Tualatin - \$4,703,322

Total

\$16,276,803

Core Services (P. 9)

- County Allocations
- Grant Management
- Regional Innovations and Professional Learning
- Cybersecurity Services
- Forecast 5
- Help Desk
- Library Services (*Follett Destiny Library, Resource Manager and Textbook*)

- Network Security Services
- Network Management
- Restraint & Seclusion
- Application Development
- Technical Engineering Cooperative
- Emergency Closure Network
- Homeschool Registration Services



Service Menu (P. 13)

Administration (P. 13)

- Communications
- Diverse Educator Pathways
- Executive Leadership Coaching
- Fiscal Services
- Human Resources
- Medicaid Reimbursements
- Spanish Language Interpretation and Translation

Early Learning (P. 14)

- Early Intervention/Early Childhood Special Education (EI/ECSE) Evaluations
- EI/ECSE Transportation

Instruction (P. 15)

- Attendance Services
- Career and College Readiness: Software and Coaching
- Cascade Education Corps
- Grant Management
- Junior Achievement: Biztown and Finance Park
- Multi-tiered Systems of Support (MTSS) Technical Support & Data System Implementation
- Oregon Virtual Education (ORVED)
- Re-engagement Services
- Willamette Promise



Service Menu (P. 13)

K-12 Special Education (P. 17)

- Audiology
- Autism Spectrum Disorder (ASD) Services
- Behavioral Support Consultation
- Blind Visually Impaired (BVI) Student Services
- Cascade Academy
- Cascade/Pacific Intensive Classroom
- Columbia K-8
- Deaf and Hard-of-Hearing Classrooms
- Deaf and Hard of Hearing Services
- Educational/Instructional Assistants
- FM Rentals
- Learning Specialists
- Levi Anderson Learning Center
- Nursing Services
- Occupational Therapy (OT) Services
- Pacific Academy
- Physical Therapy (PT) Services
- Regional Equipment Center
- School Psychology Services
- Social Emotional Learning Schools
- Speech-Language Pathology Services
- Youth Transition Program (YTP)



Service Menu (P. 13)

Technology (P. 21)

- Attendance Reconnection System
- Canvas Learning Management System
- Criminal Background Check System
- District Level Technology Purchasing
- Help Desk
- Learning360 Streaming Video
- Oregon Data Suite
- ORSpEd
- Public School Works
- Restraint and Seclusion
- School ERP Pro (*formerly Infinite Visions*)
- Synergy Student Information System
- Technical Engineering Cooperative



Student Success Act Technical Assistance Plan (P. 24)

- 9th Grade Success Network
- Attendance Collaboratives and Professional Learning
- Communications (Technical Assistance)
- Community Engagement and Family Partnerships (Technical Assistance)
- Early Literacy Network
- Instructional Coaching Network
- Multi-tiered Systems of Support (MTSS) Technical Support & Data System Implementation (Technical Assistance)
- Research, Assessment and Evaluation (Technical Assistance)
- School Culture and Climate
- Small/Rural Grant Support (Technical Assistance)





Thank you! Questions?

Proposed Motion:

*I move to approve Resolution #____
approving the 2024-25 NWRES
Local Service Plan, as presented.*