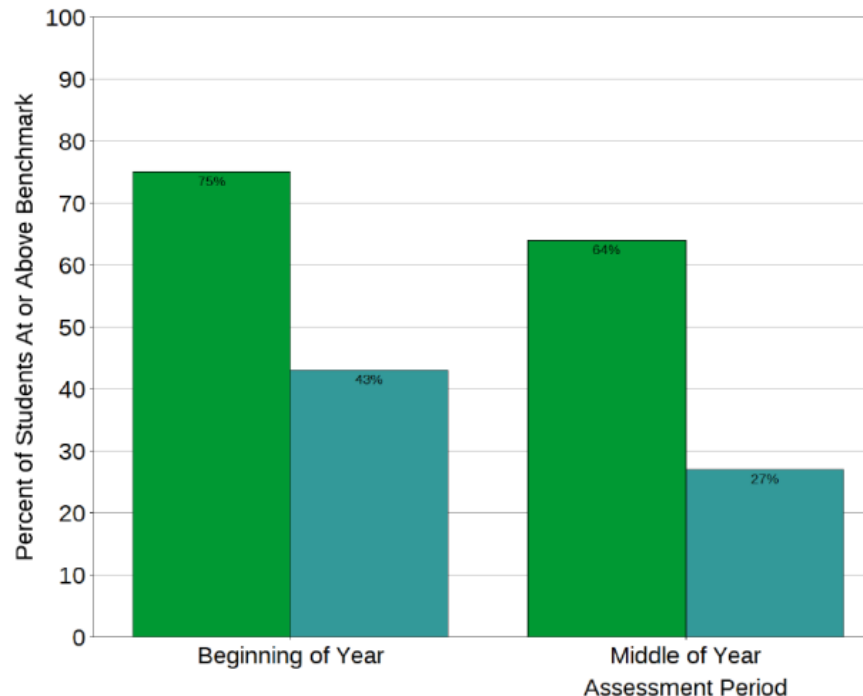


# 2020-21 DIBELS Reading Data

District Wide Comparison of 19/20 and 20/21 Data  
and  
Breakdown (by school) of Fall 2020 and Winter 2021 DIBELS Scores

# Kindergarten

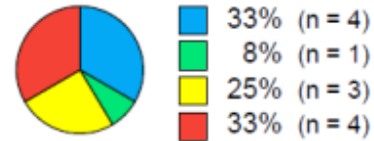
- 20/21 kinders came in significantly lower than our 19/20 kinders.
  - 19/20: 75%
  - 20/21: 43%
- A drop from fall to winter is not uncommon.
  - 19/20: 11% decrease
  - 20/21: 16% decrease



■	2019-2020
	Beginning of Year: 75% (36 of 48)
	Middle of Year: 64% (32 of 50)
	End of Year: 0% (0 of 0)
■	2020-2021
	Beginning of Year: 43% (13 of 30)
	Middle of Year: 27% (9 of 33)
	End of Year: 0% (0 of 0)

## Beginning of Year

### Reading Composite Score



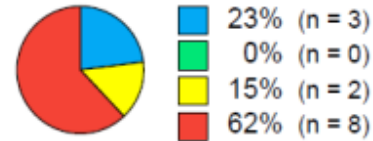
Number of Students = 12

Average = 25.3

Standard Deviation = 19.1

Score Range = 1 to 56

## Middle of Year



Number of Students = 13

Average = 83.7

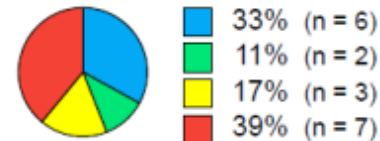
Standard Deviation = 60.8

Score Range = 4 to 205

# Garibaldi

## Beginning of Year

### Reading Composite Score



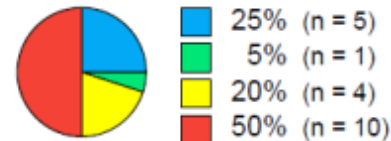
Number of Students = 18

Average = 27.7

Standard Deviation = 20

Score Range = 1 to 62

## Middle of Year



Number of Students = 20

Average = 93.2

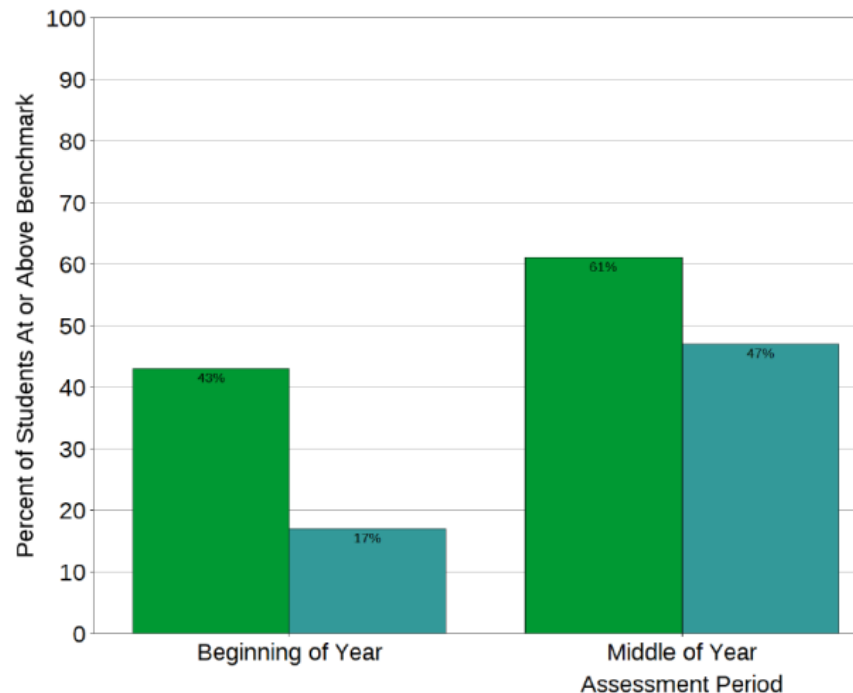
Standard Deviation = 58.1

Score Range = 3 to 205

# Nehalem

# 1st Grade

- 20/21 first graders came in significantly lower than our 19/20 first graders.
  - 19/20: 43%
  - 20/21: 17%
- Both years had an increase from fall to winter!
  - 19/20: 18% increase
  - 20/21: 30% increase



## 2019-2020

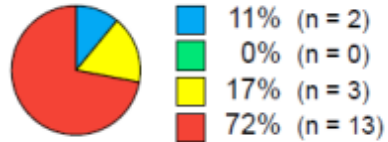
Beginning of Year: 43% (20 of 46)  
Middle of Year: 61% (28 of 46)  
End of Year: 0% (0 of 0)

## 2020-2021

Beginning of Year: 17% (7 of 41)  
Middle of Year: 47% (17 of 36)  
End of Year: 0% (0 of 0)

## Beginning of Year

### Reading Composite Score



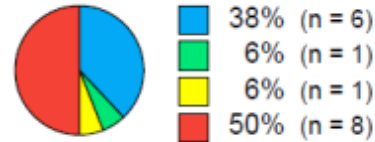
Number of Students = 18

Average = 79.2

Standard Deviation = 30.6

Score Range = 32 to 139

## Middle of Year



Number of Students = 16

Average = 138.8

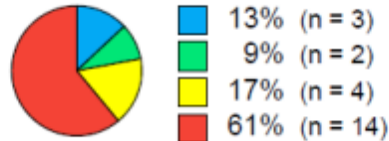
Standard Deviation = 115.1

Score Range = 15 to 375

# Garibaldi

## Beginning of Year

### Reading Composite Score



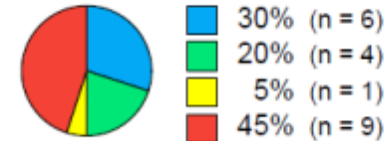
Number of Students = 23

Average = 94.2

Standard Deviation = 48.9

Score Range = 4 to 225

## Middle of Year



Number of Students = 20

Average = 142.8

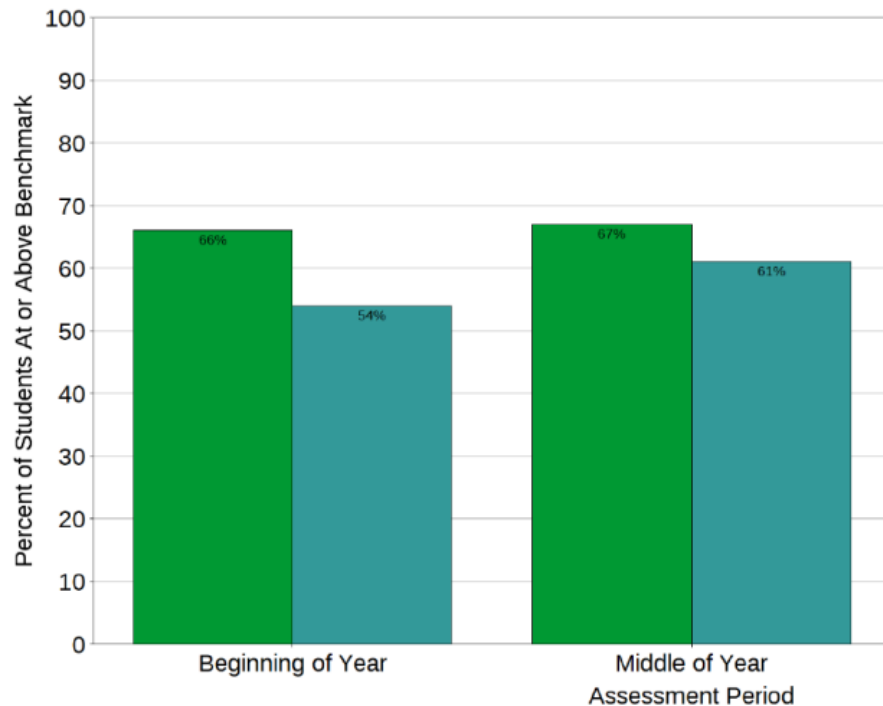
Standard Deviation = 126.1

Score Range = 3 to 410

# Nehalem

# 2nd Grade

- 20/21 second graders came in slightly lower than our 19/20 second graders.
  - 19/20: 66%
  - 20/21: 54%
- Fall to winter in 19/20 was about the same. In 20/21 there was an increase in the percentage of students at or above benchmark.
  - 19/20: 66% to 67%
  - 20/21: 54% to 61%



## 2019-2020

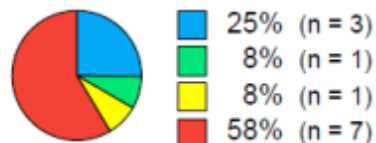
Beginning of Year: 66% (31 of 47)  
Middle of Year: 67% (33 of 49)  
End of Year: 0% (0 of 0)

## 2020-2021

Beginning of Year: 54% (20 of 37)  
Middle of Year: 61% (20 of 33)  
End of Year: 0% (0 of 0)

## Beginning of Year

### Reading Composite Score



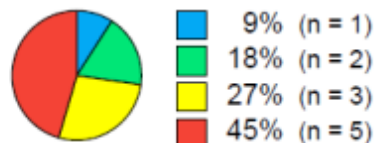
Number of Students = 12

Average = 114.5

Standard Deviation = 86.8

Score Range = 0 to 274

## Middle of Year



Number of Students = 11

Average = 151.8

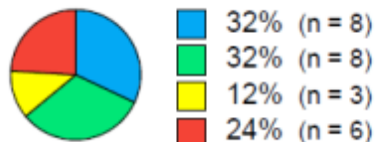
Standard Deviation = 73.5

Score Range = 66 to 291

# Garibaldi

## Beginning of Year

### Reading Composite Score



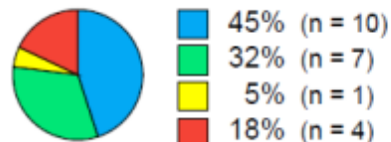
Number of Students = 25

Average = 161.2

Standard Deviation = 88

Score Range = 2 to 304

## Middle of Year



Number of Students = 22

Average = 229.2

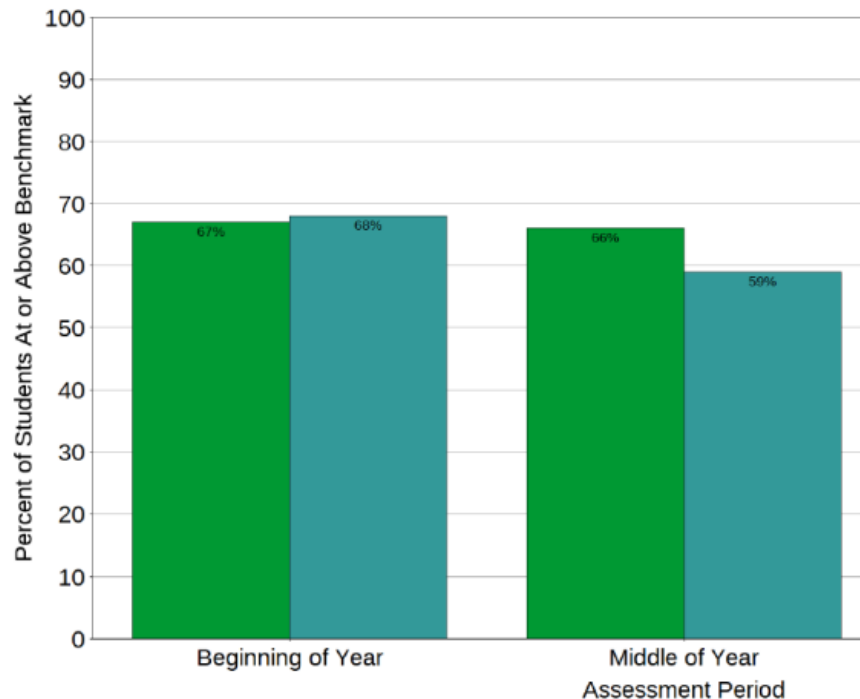
Standard Deviation = 92.3

Score Range = 43 to 372

# Nehalem

# 3rd Grade

- 19/20 & 20/21 3rd graders came in with about the same percentage of students at or above benchmark.
  - 19/20: 67%
  - 20/21: 68%
- Fall to winter in 19/20 was about the same. In 20/21 there was a slight decrease in the percentage of students at or above benchmark.
  - 19/20: 67% to 66%
  - 20/21: 68% to 59%



## 2019-2020

Beginning of Year: 67% (39 of 58)  
Middle of Year: 66% (39 of 59)  
End of Year: 0% (0 of 0)

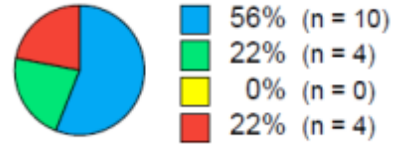
## 2020-2021

Beginning of Year: 68% (26 of 38)  
Middle of Year: 59% (24 of 41)  
End of Year: 0% (0 of 0)



## Beginning of Year

### Reading Composite Score



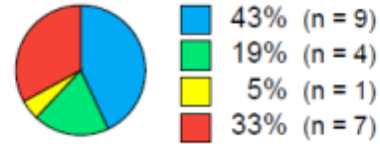
Number of Students = 18

Average = 280.5

Standard Deviation = 107.7

Score Range = 52 to 424

## Middle of Year



Number of Students = 21

Average = 298.3

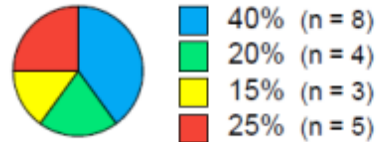
Standard Deviation = 133.8

Score Range = 41 to 550

# Garibaldi

## Beginning of Year

### Reading Composite Score



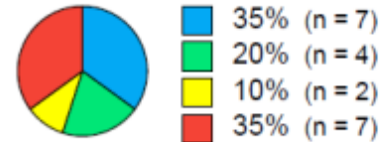
Number of Students = 20

Average = 257.4

Standard Deviation = 110.9

Score Range = 42 to 447

## Middle of Year



Number of Students = 20

Average = 289.9

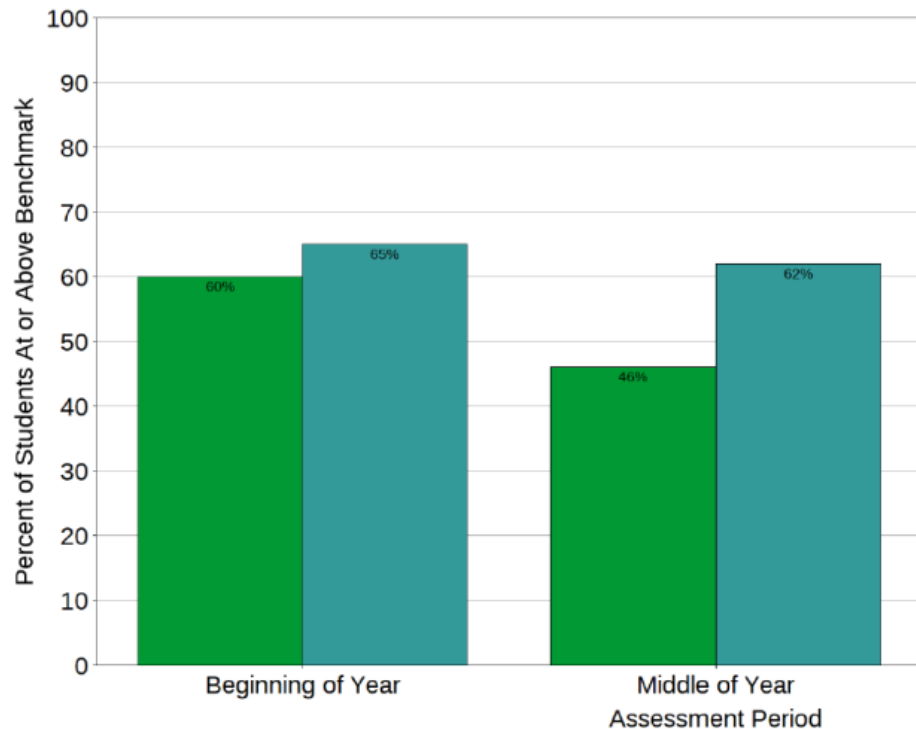
Standard Deviation = 124.5

Score Range = 42 to 520

# Nehalem

# 4th Grade

- 20/21 4th graders came in higher than 19/20 4th graders.
  - 19/20: 60%
  - 20/21: 65%
- In 19/20 & 20/21 there was a decrease from fall to winter.
  - 19/20: 60% to 46% - 14% decrease
  - 20/21: 65% to 62% - 3% decrease



## 2019-2020

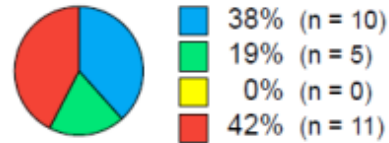
Beginning of Year: 60% (29 of 48)  
Middle of Year: 46% (21 of 46)  
End of Year: 0% (0 of 0)

## 2020-2021

Beginning of Year: 65% (35 of 54)  
Middle of Year: 62% (31 of 50)  
End of Year: 0% (0 of 0)

## Beginning of Year

### Reading Composite Score



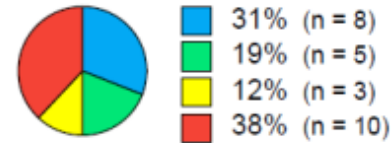
Number of Students = 26

Average = 281.2

Standard Deviation = 131.1

Score Range = 36 to 483

## Middle of Year



Number of Students = 26

Average = 310.7

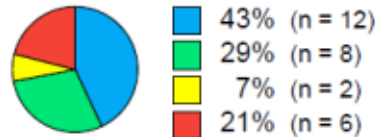
Standard Deviation = 126

Score Range = 70 to 579

# Garibaldi

## Beginning of Year

### Reading Composite Score



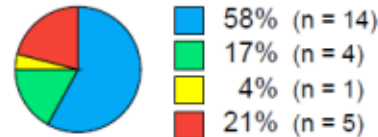
Number of Students = 28

Average = 335.4

Standard Deviation = 111.2

Score Range = 56 to 524

## Middle of Year



Number of Students = 24

Average = 388.4

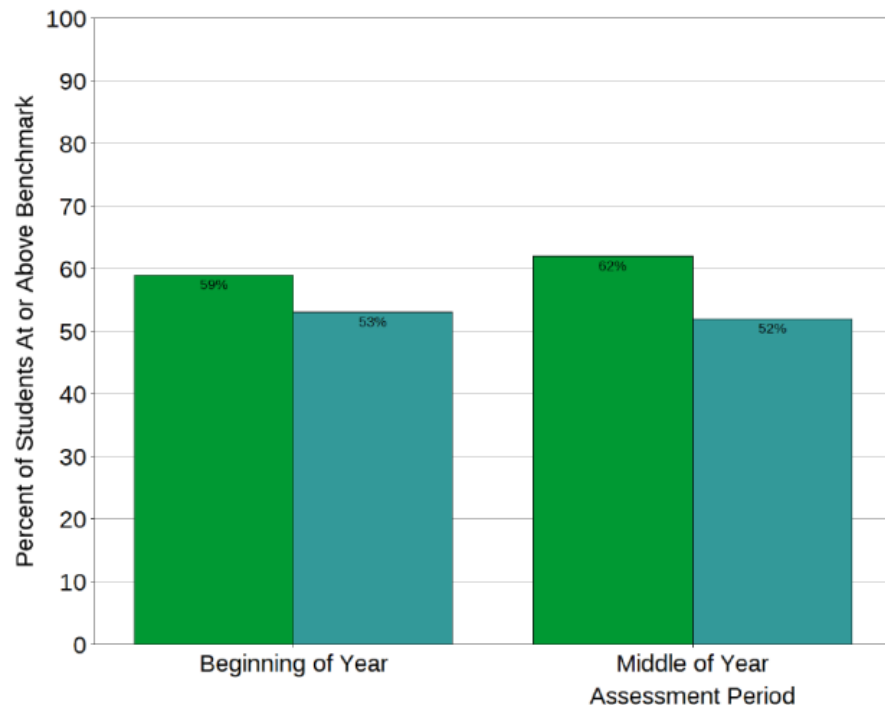
Standard Deviation = 102

Score Range = 154 to 582

# Nehalem

# 5th Grade

- 19/20 5th graders came in slightly higher than 20/21 5th graders.
  - 19/20: 59%
  - 20/21: 53%
- In 19/20 there was a slight increase in the percentage of students at or above benchmark, while in 20/21 the percentage was about the same.
  - 19/20: 59% to 62%
  - 20/21: 53% to 52%



## 2019-2020

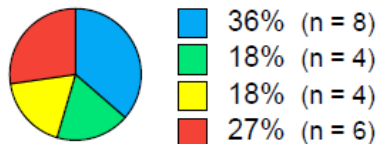
Beginning of Year: 59% (34 of 58)  
Middle of Year: 62% (39 of 63)  
End of Year: 0% (0 of 0)

## 2020-2021

Beginning of Year: 53% (24 of 45)  
Middle of Year: 52% (23 of 44)  
End of Year: 0% (0 of 0)

## Beginning of Year

### Reading Composite Score



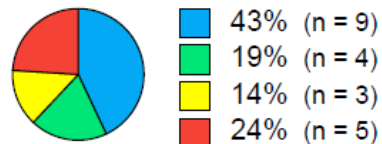
Number of Students = 22

Average = 326.2

Standard Deviation = 109.4

Score Range = 41 to 471

## Middle of Year



Number of Students = 21

Average = 378.5

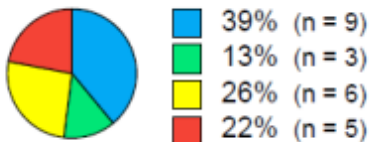
Standard Deviation = 91

Score Range = 213 to 520

# Garibaldi

## Beginning of Year

### Reading Composite Score



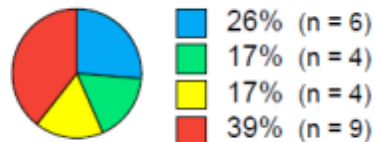
Number of Students = 23

Average = 327.7

Standard Deviation = 135.9

Score Range = 62 to 636

## Middle of Year



Number of Students = 23

Average = 353.1

Standard Deviation = 108.3

Score Range = 146 to 610

# Nehalem

# Students who have a Reading IEP

**GGG - 11/17 students with a reading IEP are included in the data:**

- 3 students are exempt.
- 3 student were given the DIBELS Survey.
- 6 students were given their grade level DIBELS test.
- 5 student were given both their grade level DIBELS and the DIBELS Survey.

**NES - 6/11 students with a reading IEP are included in the data.**

- 1 student is exempt.
- 4 students were given the DIBELS Survey.
- 5 students were given their grade level DIBELS test.
- 1 student was given both their grade level DIBELS and the DIBELS Survey.