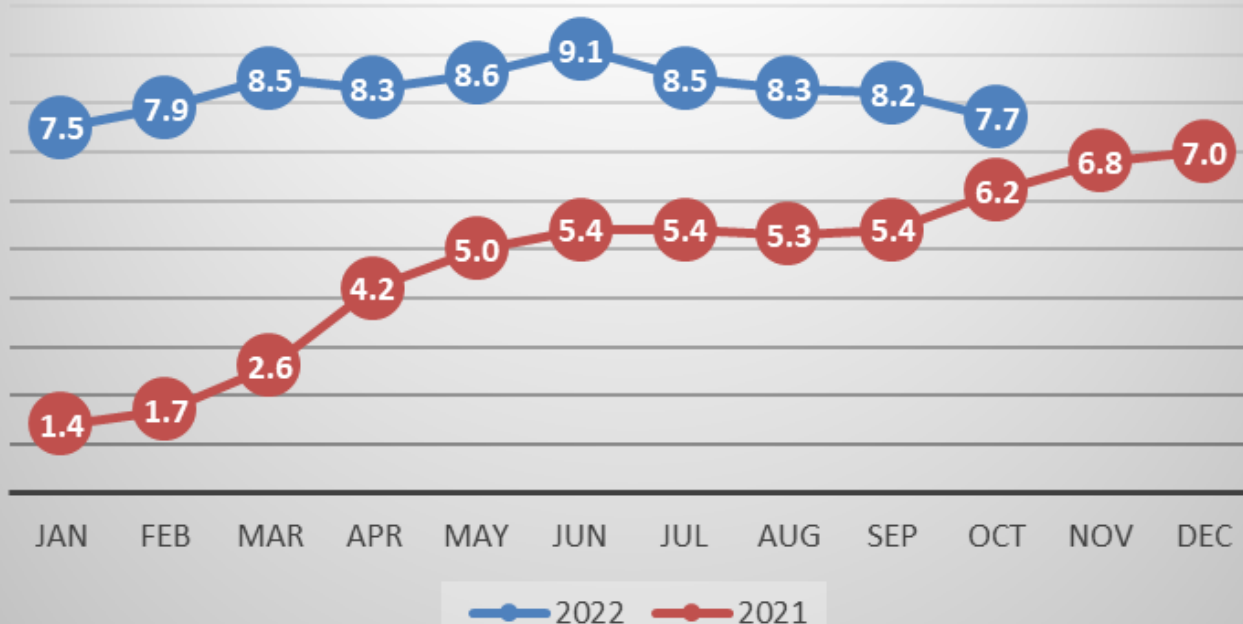


# CPI-U

## CPI-U 2021 vs 2022 in Pct.



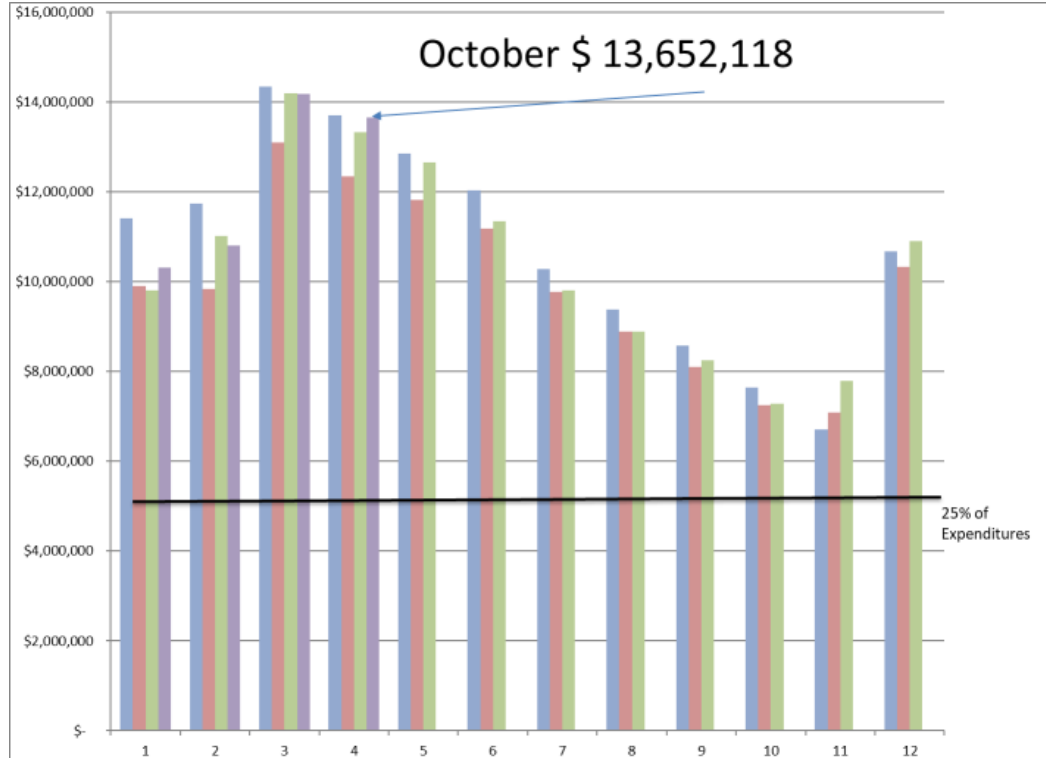
# Fund Balance- October 2022

October 2022	Revenue			Expenses			Fund Balances		
	FY23 Budget	FY23 Actual	% Budget	FY23 Budget	FY23 Actual	% Budget	Balance as of 7/1/22	Balance as of 10/31/22	+/-
Fund Operational									
10- Education	\$ 15,955,462	\$ 6,967,562	43.7%	\$ 16,249,516	\$ 4,477,403	27.6%	\$ 5,738,965	\$ 8,229,124	\$ 2,490,159
20- Oper & Main	\$ 2,157,309	\$ 945,854	43.8%	\$ 1,926,132	\$ 846,987	44.0%	\$ 2,474,761	\$ 2,573,628	\$ 98,867
40- Transportation	\$ 883,561	\$ 346,432	39.2%	\$ 944,257	\$ 193,632	20.5%	\$ 359,379	\$ 512,179	\$ 152,800
50- IMRF/SS	\$ 628,201	\$ 310,718	49.5%	\$ 523,826	\$ 146,258	27.9%	\$ 356,224	\$ 520,684	\$ 164,460
70- Working Cash	\$ 144,553	\$ 59,327	41.0%	\$ -			\$ 943,097	\$ 1,002,424	\$ 59,327
<b>TOTAL</b>	\$ 19,769,086	\$ 8,629,893	43.7%	\$ 19,643,731	\$ 5,664,280	28.8%	\$ 9,872,426	\$ 12,838,039	\$ 2,965,613
<b>Net Operational Position-ISBE</b>							\$ -		\$ 2,796,153
Fund Non-Operational							\$ -		
30- Debt Service	\$ 319,520	\$ 145,442	45.5%	\$ 310,300	\$ 12,604	4.1%	\$ 221,157	\$ 353,995	\$ 132,838
60- Capital Projects	\$ 2,000	\$ 1,834	91.7%	\$ 1,152,000	\$ 348,808	30.3%	\$ 807,058	\$ 460,084	\$ (346,974)
Total	\$ 321,520	\$ 147,276	45.8%	\$ 1,462,300	\$ 361,412	24.7%	\$ 1,028,215	\$ 814,079	\$ (214,136)
							\$ -		
<b>Grand Total</b>	\$ 20,090,606	\$ 8,777,169	43.7%	\$ 21,106,031	\$ 6,025,692	28.5%	\$ 10,900,641	\$ 13,652,118	\$ 2,751,477

# Financials by Revenue Source and Object ( 29 % )

<b>October 2022- Revenues</b>						
<b>Source</b>	<b>Budget FY23</b>	<b>FY23 YTD</b>	<b>FY22 YTD</b>	<b>Change</b>	<b>% Budget</b>	<b>% Change</b>
Property Taxes	\$ 14,122,941	\$ 6,354,679	\$ 6,542,720	\$ (188,041)	45.00%	-2.9%
Other Local Sources	\$ 1,581,800	\$ 724,675	\$ 389,175	\$ 335,500	45.81%	86.2%
State	\$ 2,506,365	\$ 684,243	\$ 724,706	\$ (40,463)	27.30%	-5.6%
Federal	\$ 1,879,500	\$ 1,013,572	\$ 504,590	\$ 508,982	53.93%	100.9%
All Funds	\$ 20,090,606	\$ 8,777,169	\$ 8,161,191	\$ 615,978	43.69%	7.5%
Operational Funds	\$ 19,769,086	\$ 8,629,893	\$ 8,160,750	\$ 469,143	43.65%	5.7%
<b>October 2022- Expenses</b>						
	<b>Budget FY23</b>	<b>FY23 YTD</b>	<b>FY22 YTD</b>	<b>Change</b>	<b>% Budget</b>	<b>% Change</b>
Salaries	\$ 10,501,948	\$ 2,465,667	\$ 2,329,879	\$ 135,788	23.48%	5.8%
Benefits	\$ 3,358,068	\$ 743,257	\$ 727,387	\$ 15,870	22.13%	2.2%
Purchased Services	\$ 2,266,540	\$ 945,071	\$ 578,856	\$ 366,215	41.70%	63.3%
Supplies	\$ 863,575	\$ 195,894	\$ 349,350	\$ (153,456)	22.68%	-43.9%
Capital Outlay	\$ 1,150,000	\$ 392,101	\$ 30,041	\$ 362,060	34.10%	1205.2%
Other Objects	\$ 2,633,900	\$ 1,031,427	\$ 787,647	\$ 243,780	39.16%	31.0%
Non-Capitalized Equipment	\$ 332,000	\$ 252,274	\$ 223,223	\$ 29,051	75.99%	13.0%
Termination Benefits	\$ -	\$ -	\$ 83,875	\$ (83,875)		-100.0%
All Funds	\$ 21,106,031	\$ 6,025,693	\$ 5,110,258	\$ 915,435	28.55%	17.9%
Operational Funds	\$ 19,643,731	\$ 5,664,282	\$ 5,096,071	\$ 568,211	28.84%	11.1%
Net Operational Position	\$ 125,355	\$ 2,965,611	\$ 3,064,679	\$ (99,068)		

# Fund Balance History



# State Delinquency

