



Quote

05/07/2026

To:
 Nye County Schools
 CHRISTA LEDBETTER
 484 S West St
 Pahrump, NV 89048
 775.727.7743 363 (Contact)
 Customer ID: 279068

Project:
 ARMAGOSA ES COMBI
 1560 E ARMAGOSA FARM RD
 ARMAGOSA VALLEY, NV 89020

From:
 Central Restaurant Products
 Steve Myers
 3500 Depauw Blvd
 Indianapolis, IN 46268
 317.238.8342

Job Reference Number: 37416

Item	Qty	Description	Sell	Sell Total
1	2 ea	COMBI OVEN, ELECTRIC Vulcan Model No. ABC7E-208 Combi Oven/Steamer, electric, boilerless, (7) 18" x 26" full size sheet or (14) 12" x 20" full size hotel pan capacity, (3) knobs with LED displays for temperature, timer & humidity, auto-adjustment of humidity with temperature selection, auto-reversing fan with electronic braking system, cool to touch glass door, flashing door light & audible alert, (4) Grab n Go wire racks, stainless steel interior & exterior, engineered & assembled in USA, UL EPH Classified, cULus	\$26,464.00	\$52,928.00
	2 ea	1 year limited parts & labor warranty, standard		
	2 ea	K-12 School Nutrition extended warranty extends the warranty for 12 months beyond the 12 month Original Equipment Warranty, not to exceed 24 months from date of installation		
	2 ea	208v/60/3-ph, 50 amps, 18kW (field convertible to 1-ph), standard		
	2 ea	Filtration System		
	2 ea	NOTE: Water is a customer supplied utility just like Gas & Electric to the equipment. Proper Water Filtration based on customer water quality is essential to meet the equipment water spec requirements. Verify type of filtration needed based on performing a cold water analysis from the customer site. A suitable Water Treatment System & regular filter replacements coupled with routine cleaning/deliming is required.		
	2 ea	CB30K-SYSTEM Single Hollow Carbon Filter System, with 30,000 gallon capacity, for chlorine & chloramine reduction, sediment, bad tastes & odors, total organic compounds, tannins & trihalomethanes, ANSI/NSF 42 & 53	\$1,514.24	\$3,028.48
	2 ea	Opted out of Reverse Osmosis System		
	1 ea	STACK-ABC/E Stacking Kit, electric, for (2) ABC7E Combi, includes: vent kit, spray hose, drip tray & casters	\$3,606.96	\$3,606.96
	1 ea	V-SPRAY V-SPRAY Standard Spray Hose Kit, provided with ABC Stand or Stacking Kits, includes: sprayer, hose, fittings, and		



Item	Qty	Description	Sell	Sell Total
		mounting bracket		
	4 ea	HOSEWTR 3/4BBV Flex stainless steel water hose 72", 3/4" female GHT (2 per unit required for gas & electric, 3 with filter system, 1 per unit for direct steam)	\$245.44	\$981.76
			ITEM TOTAL:	\$60,545.20
2	1 ea	FREIGHT Custom Model No. LIFTGATE LIFTGATE SERVICE AT DESTINATION ADDRESS. DELIVERY DRIVER WILL LOWER EQUIPMENT TO THE GROUND. CUSTOMER IS RESPONSIBLE FOR RECEIVING THE PRODUCT AND VISUALLY INSPECT THE ITEMS TO CHECK FOR DELIVERY DAMAGE. DO NOT SIGN DELIVERY DOCUMENTS UNTIL YOU HAVE INSPECTED. CUSTOMER IS RESPONSIBLE FOR BRINGING THE ITEMS INTO THE BUILDING AND HOOKING UP UTILITIES. (WATER, ELECTRICAL, ETC.)	\$175.00	\$175.00
			ITEM TOTAL:	\$175.00
			Total	\$60,720.20

Acceptance: _____ Date: _____

Printed Name: _____

Project Grand Total: \$60,720.20



ABC SERIES

Electric Boilerless Combi Oven Steamer



Model ABC7E
Shown stacked

SELL SHEET



ANSI/NSF Standard #4



SPECIFIER STATEMENT

Vulcan Combi Oven, Electric, Boilerless, 7 level full size combi, Model ABC or ABC-P. Engineered and assembled in USA. Just three knobs, no modes, only temperature, time and humidity for ultimate ease of use. Humidity level control automatically adjusts after setting temperature. Multiple cooking capabilities from one piece of equipment: Baking, Steaming, Roasting, Air-Fry, Rethermalization, Proofing, Finishing, Poaching, Stewing, Low Temp and Defrosting results. Direct steam creation for optimized cooking capability and production with minimal energy and water consumption. Auto-reversing fan with electrical braking system on fan motor. Large LED displays for temperature, time and humidity controls. Visual recall display of actual temperature and humidity LED's. Timer reloads for batch cooking after completion of timed cycle. Flashing door light & audible alarm system alert user when cooking cycle finished. Halogen door light behind heat reflective inner glass. (4) stainless steel Grab-N-Go Racks with 15½" x 3¼" cutout design for easy access to pans. Maximum capacity of (7) racks for a total of (7) 18" x 26" or (14) 12" x 20" pans. Machine diagnostics accessed thru controls or via USB. Cool to the touch & energy efficient heat reflective tempered glass door. All stainless steel cavity, top, sides & fully insulated. One year limited parts and labor warranty.

Exterior Dimensions:

Combi: 35"H x 42.2"W x 43.5"D

Stand & Combi: 63.1"H x 42.2"W x 43.5"D

Stacked Combi: 75.2"H x 42.2"W x 43.5"D

Project _____

AIA # _____ SIS # _____

Item # _____ Quantity _____ C.S.I. Section 114000

MODELS

ABC7E-208

ABC7E-240

ABC7E-480

ABC7E-208P

ABC7E-240P

ABC7E-480P

STANDARD FEATURES

- Engineered and assembled in Louisville, Kentucky, USA
- Just three knobs, no modes, only temperature, time and humidity
- Patent-pending humidity level control automatically adjusts after setting temperature
- Multiple cooking capabilities from one piece of equipment: Baking Steaming, Roasting, Air-Fry, Rethermalization, Proofing, Finishing Poaching, Stewing, Low Temp and Defrosting results
- Boilerless combi uses direct steam creation optimizing cooking capability & production with minimal energy & water
- Auto-reversing fan with electronic braking system on fan motor
- Large LED displays for temperature, time and humidity controls
 - Temperature range: 80-450°F
 - Timer range: continuous (---) up to 23:59 hours and minutes
 - Humidity range: 0-100%
- Visual recall display of actual temperature and humidity LED's
- Timer reloads for batch cooking after completion of timed cycle
- Flashing door light & audible alarm system alert user when cooking cycle finished
- Halogen door light behind heat reflective inner glass
- (4) stainless steel Grab-n-Go Racks with 15½" x 3¼" cutout design for easy access to pans
- Machine diagnostics accessed thru controls or via USB
- Cool to the touch & energy efficient heat reflective tempered glass door
- All stainless steel cavity, top, sides & fully insulated
- One year limited parts and labor warranty (two year K-12)
- ABC-P models include food probe and fan speed control

OPTIONS

- Hollow Carbon Filter System – Good (Suggested Minimum)
 - CB15K-SYSTEM – 15,000 gal. (carbon only treatment)
 - Op1.5 30,000 gal. (carbon only treatment)
- Water Softening – Better (Carbon CBK System Required)
 - WS-40 – 40 lb. capacity (hard water treatment)
- Reverse Osmosis System – Best
 - V3MRO-2 up to 200 gpd capacity, double unit
- Second year extended limited parts and labor warranty contract.

ACCESSORIES (PACKAGED AND SOLD SEPARATELY)

- ADDRACK-ABC1 – (1) One additional Grab-N-Go Rack
- ADDRACK-ABC3 – (3) Three additional Grab-N-Go Racks
- 1220-BASKET – Fry Basket 12" x 20"
- ABC-HEAT – Combi heat shield
- Stands & Stacking Kits include: (1) Spray Hose and Drip Tray Kit
 - ABC-STAND – Stainless steel stand with base
 - STACK-ABC/E – Electric stacking kit for two ABC7E combis
 - STACK-ABC/CONV – Stack kit for combi/convection
- HOSEWTR-3/4BBV – s/s flex water hose 72" length, ¾" female GHT (2 per unit recommended)

ABC SERIES – Electric Boilerless Combi Oven Steamer

Approved by _____ Date _____ Approved by _____ Date _____



ABC SERIES

Electric Boilerless Combi Oven Steamer

WATER QUALITY STATEMENT

The fact that a water supply is potable is no guarantee that it is suitable for steam generation. All steam equipment is subject to contamination and failure due to chemical and mineral content found in water. A suitable Hobart Water Treatment System and regular filter replacements coupled with routine deliming is the recommended minimum. Damage as a result of poor water quality or lack of required owner/operator maintenance is the responsibility of the owner/operator.

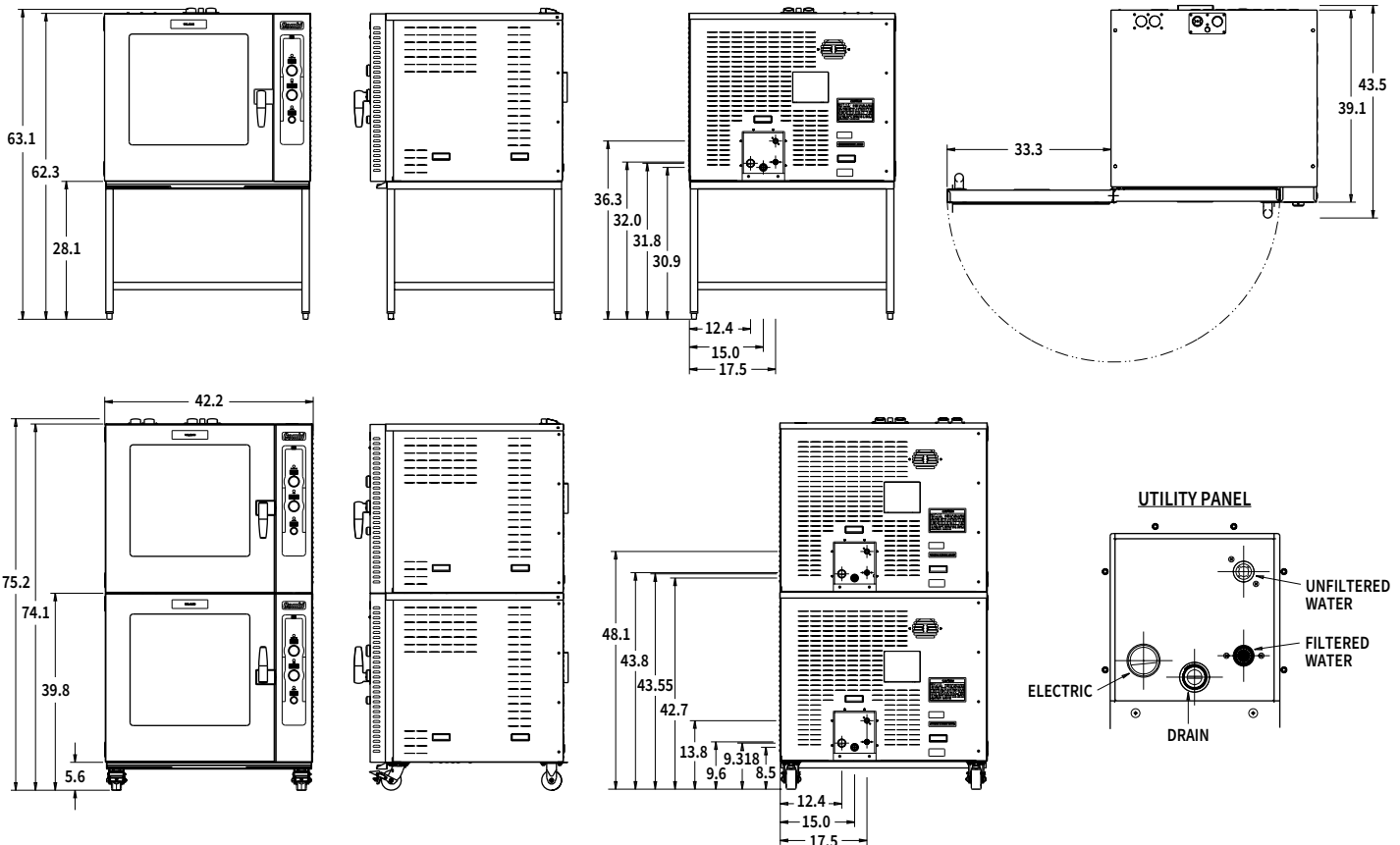
Your water supply must be within these general guidelines:

DYNAMIC WATER PRESSURE	30 - 60 psig
HARDNESS*	1 - 3 grains
SILICA	less than 13 ppm
TOTAL CHLORIDE	less than 30 ppm
pH RANGE	7-8
CHLORINE & CHLORAMINE	0 ppm
ALKALINITY	less than 20 ppm
TDS	less than 60 ppm
UN-DISSOLVED SOLIDS	less than 5 microns

* 17.1 ppm = 1 grain of hardness

Other factors affecting steam generation are iron content, amount of chlorination and dissolved gases. Water supplies vary from state to state and from locations within a state. Therefore it is necessary that the local water treatment specialist be consulted before the installation of any steam generating equipment.

INSTALLATION MANUAL



USER RESPONSIBILITY

The product must be installed, cleaned and maintained as described in the Manual furnished with the product. It is the responsibility of the owner and installer to comply with local codes.

SERVICE CONNECTIONS

Water: Filtered and unfiltered cold water line female connections into 3/4" male GHT (50-60 psi recommended for best results).

Drain: 1" Stainless steel round tube connection to be piped to open drain, 60" maximum length before open air gap and not more than two bends or elbows.

Electrical: Field wire electrical connection 1.36" or 1.69" K.O. service entrance.

Model	PH	208V		240V		480V	
		KW	Amp	KW	Amp	KW	Amp
ABC7E	1	18	86.5	24	100	-	-
	3	18	50	24	57.8	24	28.9

Amperage values in the table are nominal. Tolerance is +5/-10%. Always refer to the NEC, state and local codes.

NOTE

Clearance: Left 1", Back 4", Right 3" required, 18" recommended for service access on right side.

[CAD and/or Revit Files Available](#)

MACHINE WEIGHT: 580 lbs.

As continued product improvement is a policy of Vulcan, specifications are subject to change without notice.

HOBART701 S Ridge Avenue, Troy, OH 45374
1-888-4HOBART • www.hobartcorp.com**WATER TREATMENT SYSTEMS
STEAMER/COMBI (FLASH TYPE)
APPLICATIONS****HOBART****WATER TREATMENT SYSTEMS STEAMER/COMBI (FLASH TYPE) APPLICATIONS****STANDARD FEATURES**

- Single cartridge hollow carbon filter system includes mounting bracket, 3/4" NPTF inlet and outlet, shut-off valve, test port, and gauge.
- Reduce Chloramine, Chlorine, Sediment, Bad Tastes and Odors, Total Organic Compounds, Tannins and Trihalomethanes
- Modular design is adaptable to accommodate changing water conditions
- Simple to install and service
- FOR COLD WATER USE ONLY
 - Min./Max. Pressure: 40 – 125 psi
 - Min./Max. Temperature: 40° – 100° F
 - CB15K-SYSTEM (00-847487-00001)
 - Rated Capacity (Gallons)*: 15,000
 - Flow Rate: 3.7 gpm
 - Shipping Weight: 18 Lbs.
 - CB30K-SYSTEM (00-847487-00002)
 - Rated Capacity (Gallons)*: 30,000
 - Flow Rate: 5 gpm
 - Shipping Weight: 20 Lbs.
- Quick-Change cartridge design for replacement without tools
- Replacement Cartridge Filters:
 - CB15K-PMKIT - 15,000 Gallon Rated Capacity (00-847487-1PMK)
 - CB30K-PMKIT - 30,000 Gallon Rated Capacity (00-847487-2PMK)
- Exterior dimensions:
 - CB15K-SYSTEM 14" w x 9" d x 23⁷/₈"
 - CB30K-SYSTEM 14" w x 9" d x 28⁷/₈"

MODELS

- CB15K-SYSTEM
- CB30K-SYSTEM

Specifications, Details and Dimensions on Reverse Side.



* Independently tested by an E.P.A. approved laboratory to ANSI/NSF Standard 42 & 53 specifications for the reduction of Cyst, Particulate Class I, Chlorine, Chloramine, Taste and Odor.



WATER TREATMENT SYSTEMS STEAMER/COMBI (FLASH TYPE) APPLICATIONS



701 S Ridge Avenue, Troy, OH 45374
1-888-4HOBART • www.hobartcorp.com

NOTICE:

- Failure to replace cartridge before end of capacity life can result in pitting, rusting and discoloration due to Chloramines and Chlorine in water supply.
- Routine filter replacement & deliming are required for warranty consideration.
- This filter does not remove scale build-up due to hardness or other contaminants that may be in water.
- Hardness will result in scale build-up. Deliming is required to remove scale build-up or use of an additional treatment such as a water softener is recommended.
- Gallon capacity will vary according to flow rate, inlet pressure and local water conditions.
- Replace cartridge if outlet pressure gauge is less than 20 psi. or before end of capacity life (Maximum cartridge operating life 1 year.)

Water Quality Statement

The fact that a water supply is potable is no guarantee that it is suitable for steam generation. Systems are not to be used where water is microbiologically unsafe or with water of unknown quality without adequate disinfections before

and after use. Other factors affecting steam generation include iron content, amount & type of chlorination, and dissolved gasses. Water supplies vary from state to state and from locations within a state.

As with all steam related products, water filtration and regular filter replacements coupled with routine Deliming are required. Your local Hobart office can recommend a water treatment or filtration system to meet the needs of your local water conditions. Contact your local Hobart representative for water treatment offerings.

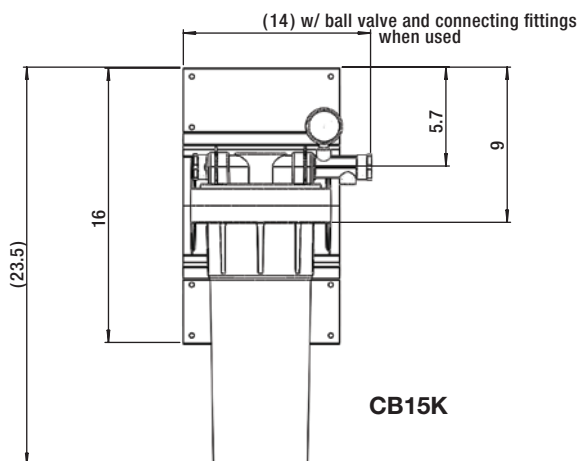
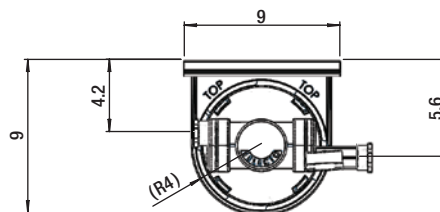
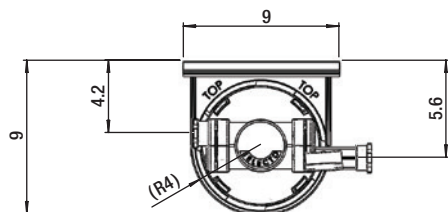
Note:

- Installation of backflow preventers, vacuum breakers and other specific code requirements is the responsibility of the owner and installer in compliance with local codes.

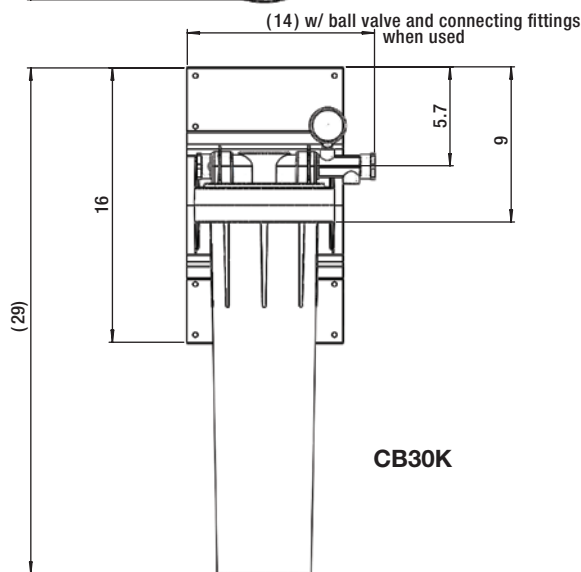
Recommended filter clearance needed for access:

Front 13"
Bottom 4"

This appliance is manufactured for commercial installation only and not intended for home use.



CB15K



CB30K

EXTERIOR DIMENSIONS:

MODEL	WIDTH	DEPTH	HEIGHT
CB15K-SYSTEM	14"	9"	23 ⁵ / ₈
CB30K-SYSTEM	14"	9"	28 ⁵ / ₈

As continued product improvement is a policy of Hobart, specifications are subject to change without notice.