

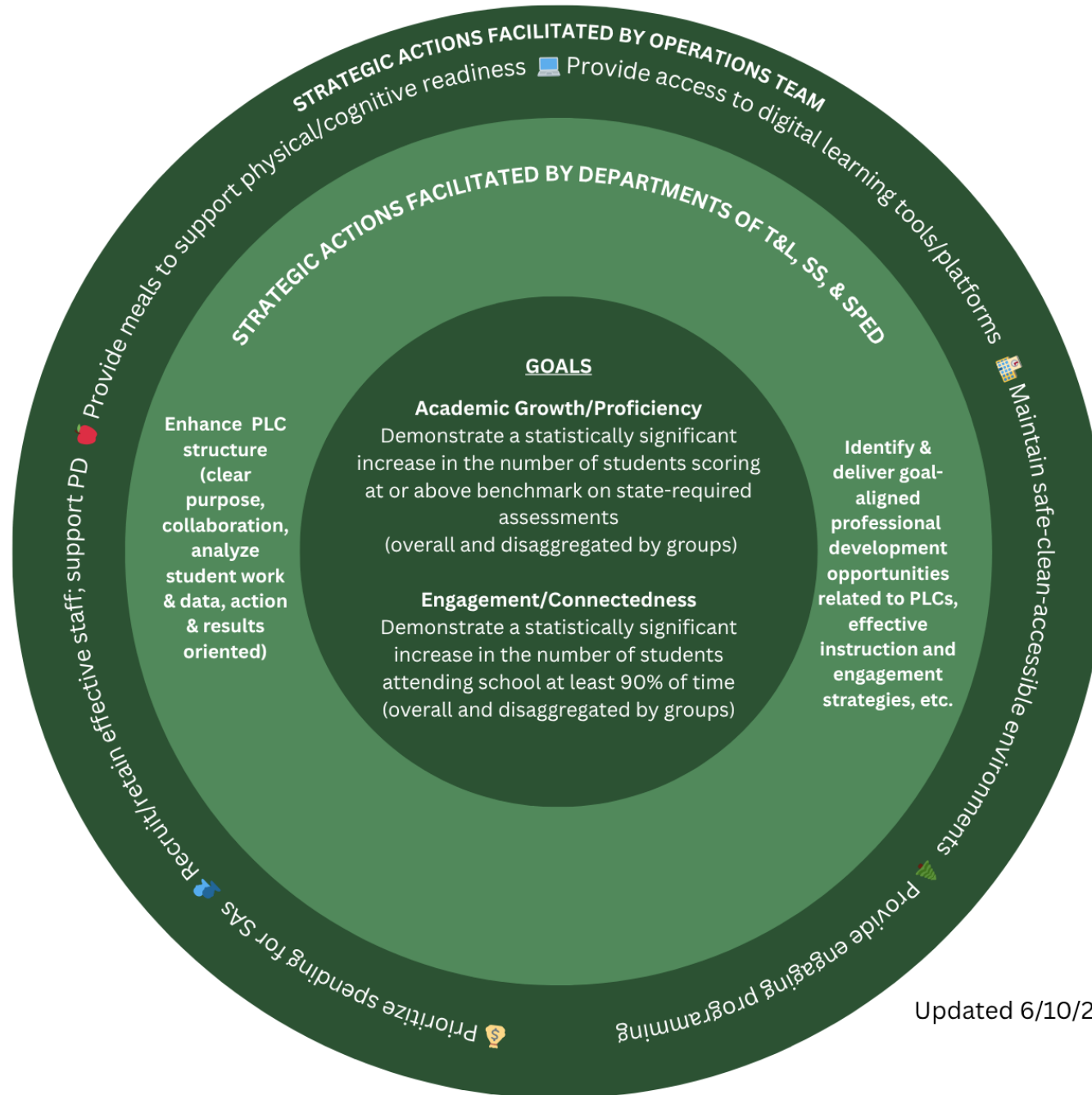
OPTIONS FOR PROGRESS MONITORING MEASURES (during the year):

Academic Growth & Proficiency

- aimswebPlus
- FastBridge
- Common Assessment/ Rubrics

Engagement & Connectedness

- Attendance
- Discipline Data
- Surveys:
 - 7 Mindsets
 - Student Engagement
 - Connections



LAGGING INDICATORS (end of the year):

Academic Growth & Proficiency (choose one appropriate to level)

- 4K-2: aimswebPlus
- 3-8: Forward
- 9-10: PreACT
- 11: ACT

Engagement & Connectedness

- Attendance

Updated 6/10/2025