

September 14, 2021

Prospect Heights District 23 ESSER Grant Overview



Presentation to the Board of Education
and Public Hearing

What are ESSER Grants?

Elementary and Second School Relief Fund

- **ESSER I** - Coronavirus Aid, Relief, and Economic Security Act (CARES)
- **ESSER II** - The Coronavirus Response and Relief Supplemental Appropriations Act, 2021 (CRRSA)
- **ESSER III** - American Rescue Plan Act of 2021 (ARP)



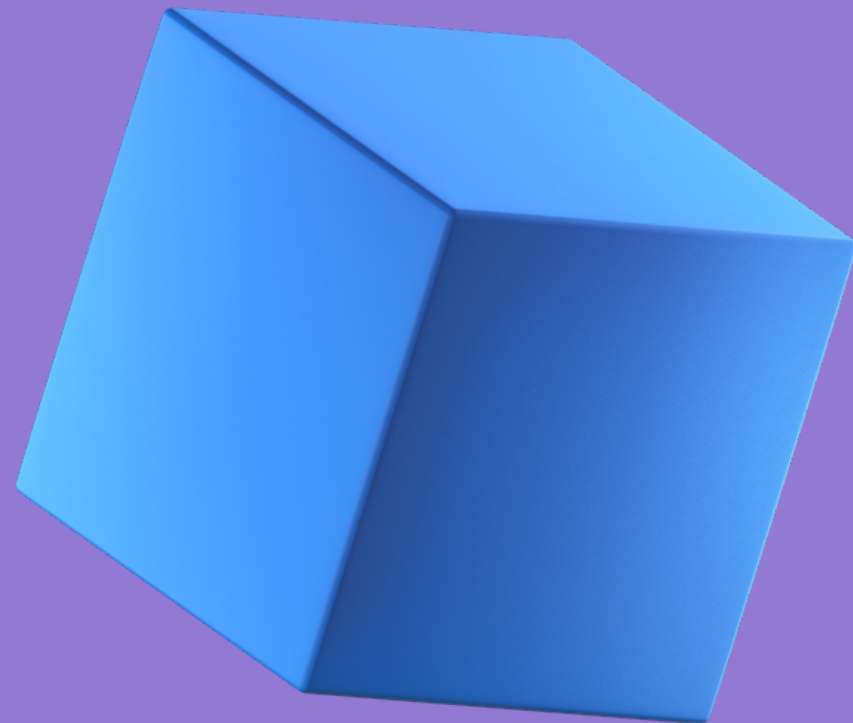
District 23 ESSER Allocations to Date...

ESSER I

\$125,000

ESSER II

\$467,000



ESSER III

\$1,093,264



Consistent Areas of District Focus:

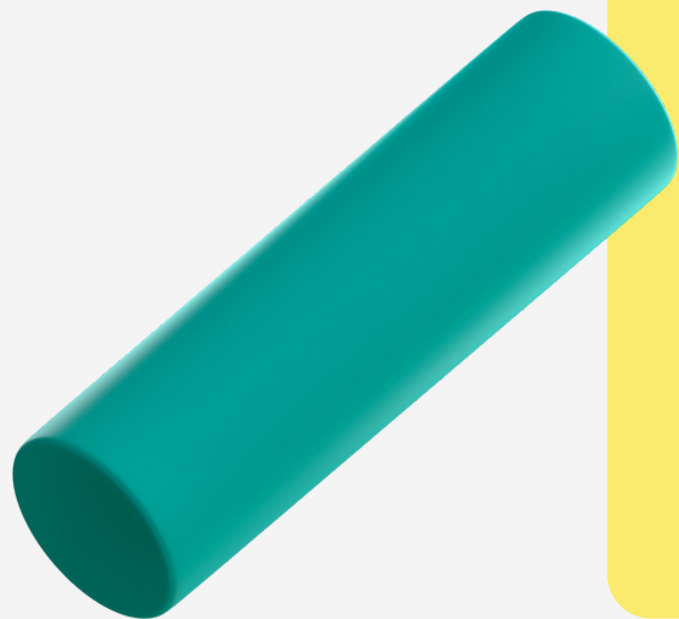
Personnel

Technology

**Mitigation
Supplies &
Equipment**

**Space
Modifications**

**Curriculum &
Programming**



How Long Does the District Have to Spend the Funds?

ESSER I	September 30, 2022
ESSER II	September 30, 2023
ESSER III	September 30, 2024



How has the District Spent its ESSER Funds So Far?



ESSER I (CARES):

- Forehead Thermometers
- iPads & Cases

ESSER II (CRRSA):

- Large Space AV Enhancements
- Grade 5 iPads
- Reading Interventions
- Dedicated Building Substitutes
- Student & Staff Face Masks
- MERV Filters for HVAC Systems
- Additional Honeywell Programming
- PODS Storage for Classroom Furniture

ESSER III Guidelines & Objectives...

- Public Hearing Required to Allow for Public Input and Discussion
- 20% Funds to be Used to Address Learning Loss
- Large Scale Support of In-Person Instruction
- Increase and Enhance District Pandemic Preparedness and Mitigation



Plan for ESSER III (ARP) Funds...

- **PERSONNEL**

- Before & After School Tutoring
- COVID Planning Stipends
- Additional Supervisors for Entry, Lunch and Recess

- **TECHNOLOGY**

- Removal of Promethean Boards and New Apple TV's/Projectors in Classrooms
- Increased WiFi Access (Outside)
- DocuSign Software



Plan for ESSER III (ARP) Funds Con't...

- **MITIGATION SUPPLIES**

- Scrubs/Jackets for Early Childhood & SAIL Staff
- MERV Filters for HVAC Systems
- Entryway Sanitizer & Signage
- Folding Tables & Chairs

- **SPACE MODIFICATIONS**

- Outdoor Learning Spaces (Structures, Furnishings & WiFi)
- Additional Cafeteria Tables



Plan for ESSER III (ARP) Funds Con't...

- **CURRICULUM AND PROGRAMMING**
 - Reading & Math Programs Including Special Education and Intervention
 - Community Engagement
 - Social Emotional Learning & Wellness Programming
 - Dedicated Building Substitutes



Thank You!

Any Questions?

