

Ector County Independent School District

2016-17 Annual Performance Report



Annette Macias

Director of Accountability, Assessment, and School Improvement

2016-17 Annual Report Components



Included in the report:

- TAPR - Texas Academic Performance Report
- PEIMS Financial Standard Report
- District Accreditation Status
- Report on Violent or Criminal Incidents
- Student Performance in Postsecondary Institutions

TAPR Report



- Reports produced at the state, education service center, region, district, and school levels
- Data disaggregated by
 - Ethnicity
 - Economically Disadvantaged
 - English Learner
 - Special Education

TAPR Report Cover Page

Note: The data reported within this Annual Performance Report does not contain new information. This annual report is the “final” report for the 2016-2107 school year. TEA does not release the Texas Academic Performance Report (TAPR) until December in order to finalize all Accountability Ratings.



2016-17 Texas Academic Performance Report

District Name: ECTOR COUNTY ISD

District Number: 068901

2017 Accountability Rating: **Met Standard**

2017 Special Education Determination Status:

Needs Intervention

2017 Special Education Determination Status: Needs Intervention



Districts receive 1 of 4 special education determination statuses on the TAPR report.

- Meets Requirements
- Needs Assistance
- Needs Intervention
- Needs Substantial Intervention

Needs substantial intervention is the highest level of need.

ECISD has improved from Needs Substantial Intervention to Needs Intervention.

The label represents an integrated determination status based on an evaluation of the PBMAS indicators, State Performance Plan compliance indicators 3-13, data integrity, uncorrected noncompliance and audit findings.

TAPR Report

Changes to the Texas Academic Performance Report



- STAAR results are categorized as Approaches Grade Level, Meets Grade Level, or Masters Grade Level.
- Inclusion of previous year's data to allow for direct comparisons
- STAAR participation data
- Counts and percentages of students with disabilities. These counts are disaggregated by type of primary disability.
- Mobility rates by race/ethnicity.



Improved Academic Performance - Pgs. 2-10

The academic performance gap between the state and the district has narrowed in the following areas overall:

STAAR Approaches Grade Level or Above	STAAR *Meets Grade Level	STAAR **Masters Grade Level	STAAR Progress
All Subjects 3%	Reading 1%	All Subjects 1%	All Subjects 5%
Reading 1%	Mathematics 4%	Math 1%	Math 7%
Math 5%	Science 1%	Writing 1%	
Science 5%			
Social Studies 2%			

***Meets Grade Level equates to a 60% chance of completing one year of college without remediation.**

****Masters equates to a 75% chance of completing one year of college without remediation.**

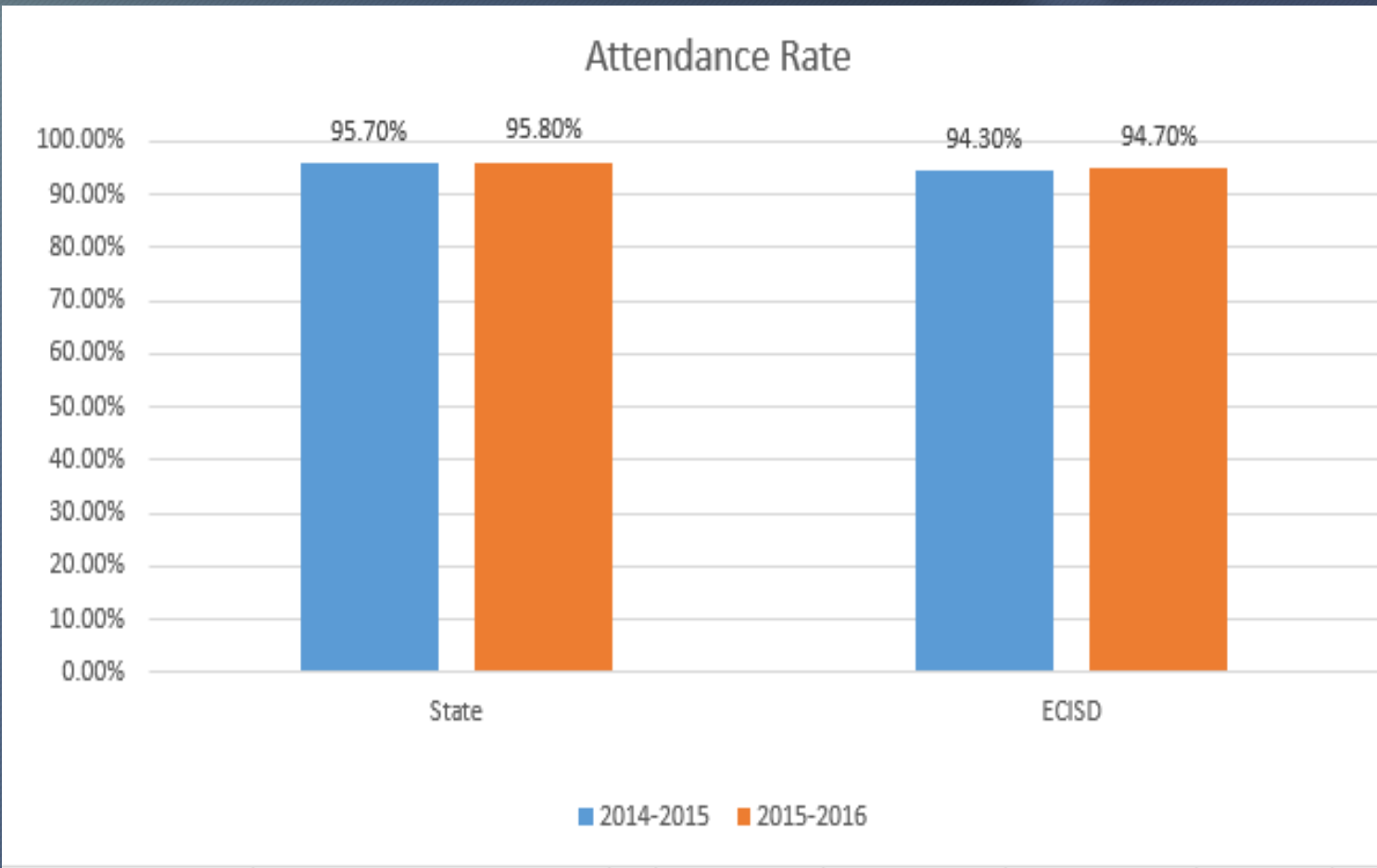
District Performance Summary - Pg. 12

Attendance and Annual Drop Outs - always 1 year lag



Attendance Rate

	State	ECISD
2014-2015	95.7%	94.3%
2015-2016	95.8%	94.7%
	Change 0.1%	Change 0.4%

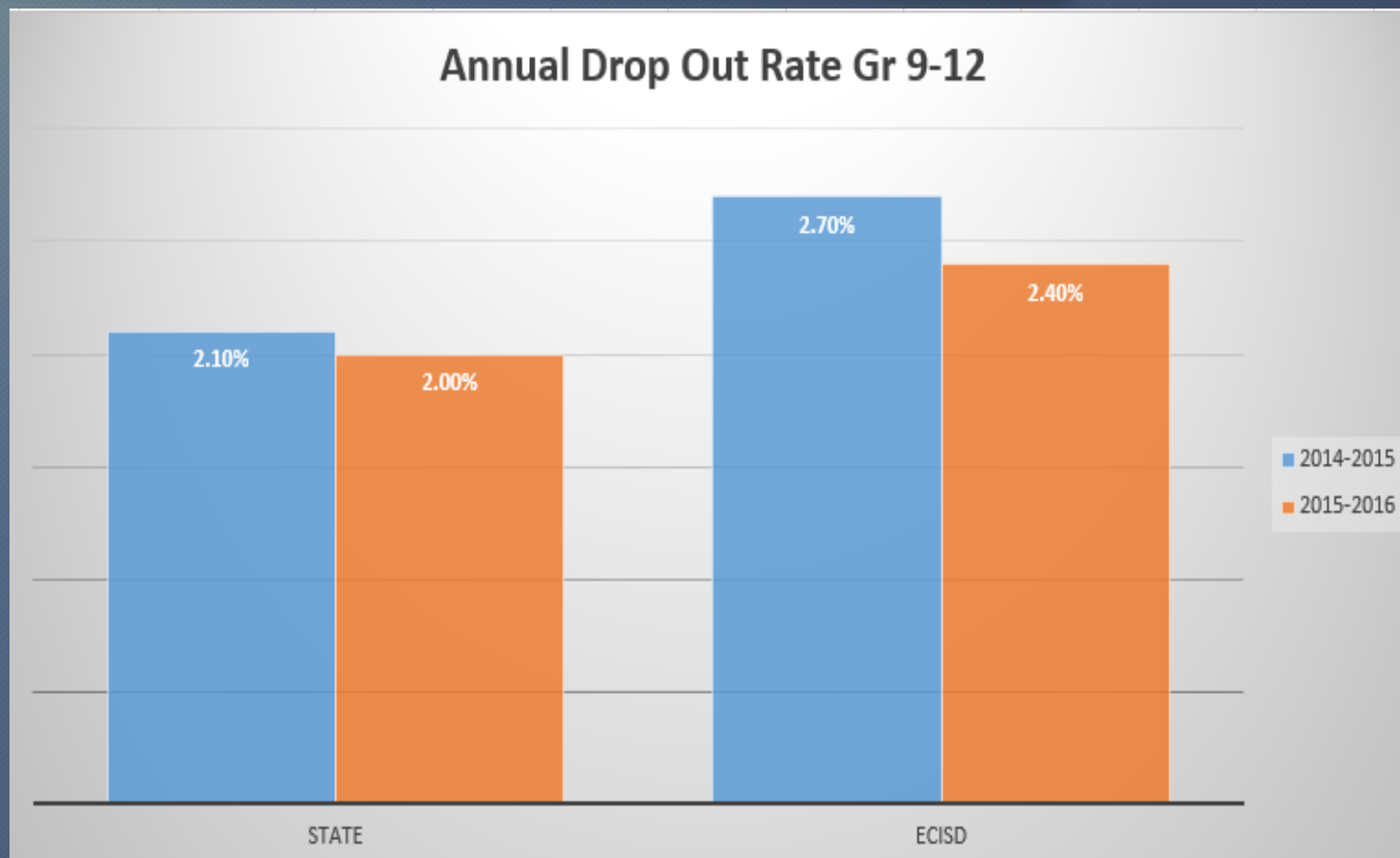


District Performance Summary - Pg. 12

Attendance and Annual Drop Outs - always 1 year lag



Annual Drop Out Rate Gr 9-12		
	State	ECISD
2014-2015	2.1%	2.7%
2015-2016	2.0%	2.4%
	Change -0.1%	Change -0.3%



District Performance Summary

Post Secondary Readiness - Year Old Statistics p. 14-15



- Increase in Advanced Course/Dual Credit completion rates Gr 9-12

Advance Course/Dual Credit completion rates Gr9-12		
	State	ECISD
	Change 2014-2015 2015-2016	Change 2014-2015 2015-2016
Any Subject	1.3%	2.0%

TAPR Report

District Performance Summary

Post Secondary Readiness - Year Old Statistics - Pg. 16



- ECISD Increase in AP/IB Participation Percentages

AP/IB Participation Percentages		
	State	ECISD
	Change 2014-2015 2015-2016	Change 2014-2015 2015-2016
All Subjects	0.6%	7.0%

TAPR Report

District Performance Summary

Post Secondary Readiness - Year Old Statistics - Pg.16



- ECISD Increase in SAT/ACT Participation Percentages

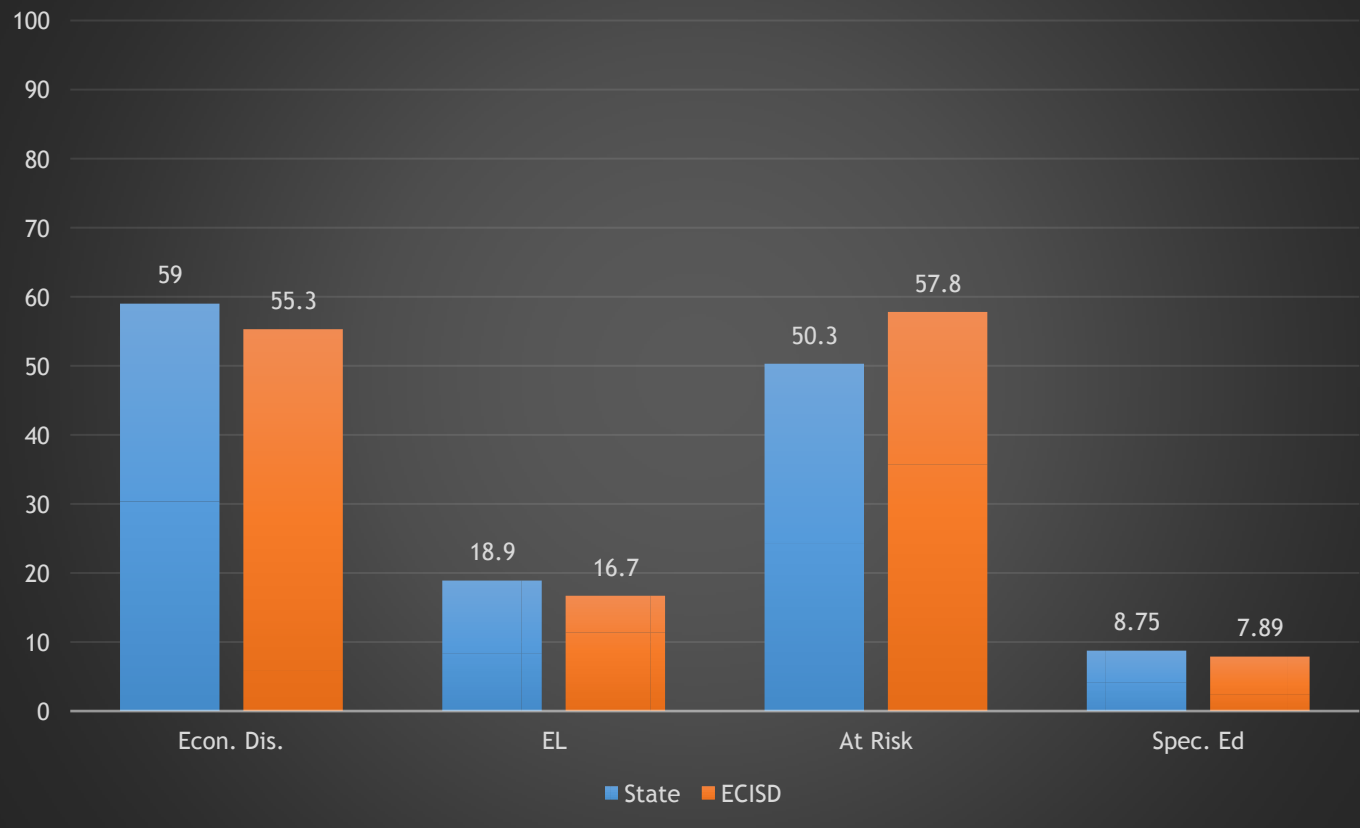
SAT/ACT Participation	
State	ECISD
Change Class of 2015 Class of 2016	Change Class of 2015 Class of 2016
3.3%	52.6%

TAPR Report

Program Enrollment Information - Pg. 18



Program Enrollment 2016-17



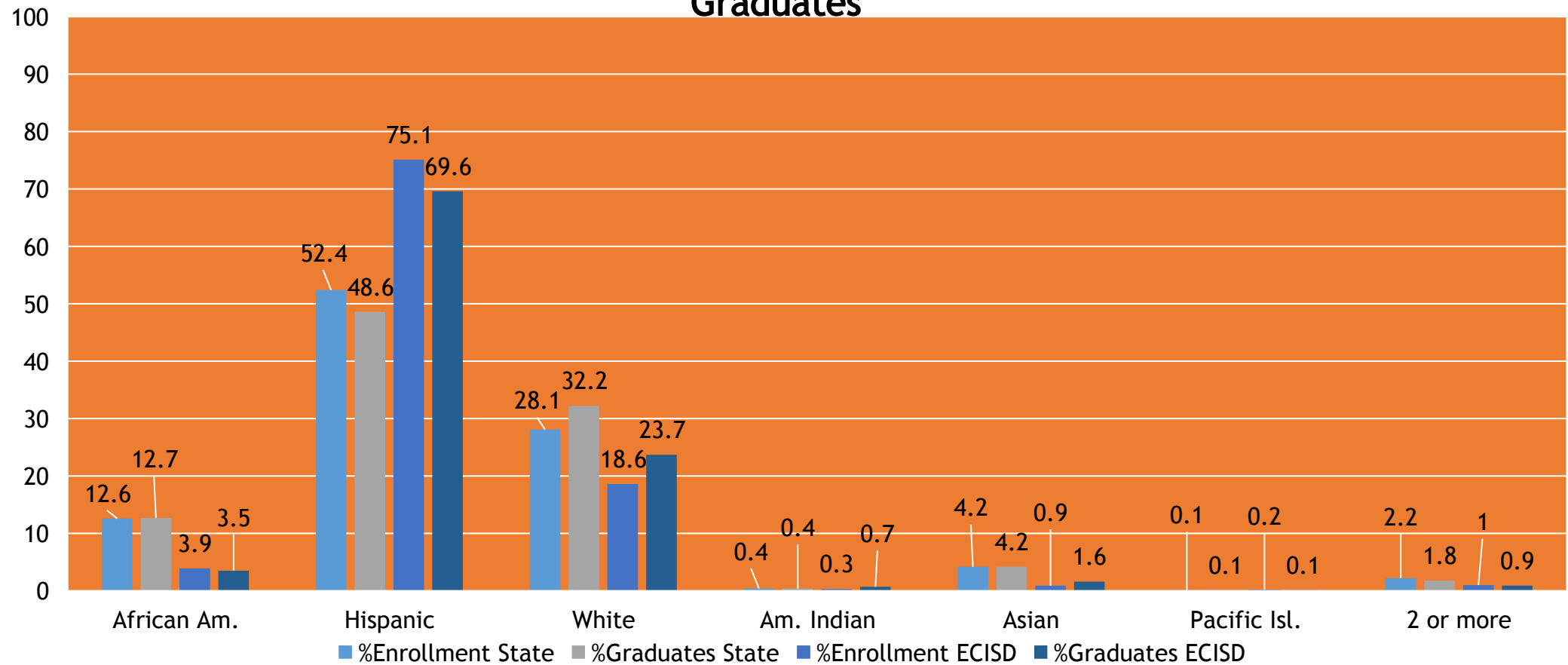
TAPR Report

State & ECISD Profile

Graduates (Class of 2016) by Ethnicity proportional to total enrollment - Pg. 19



Graduates



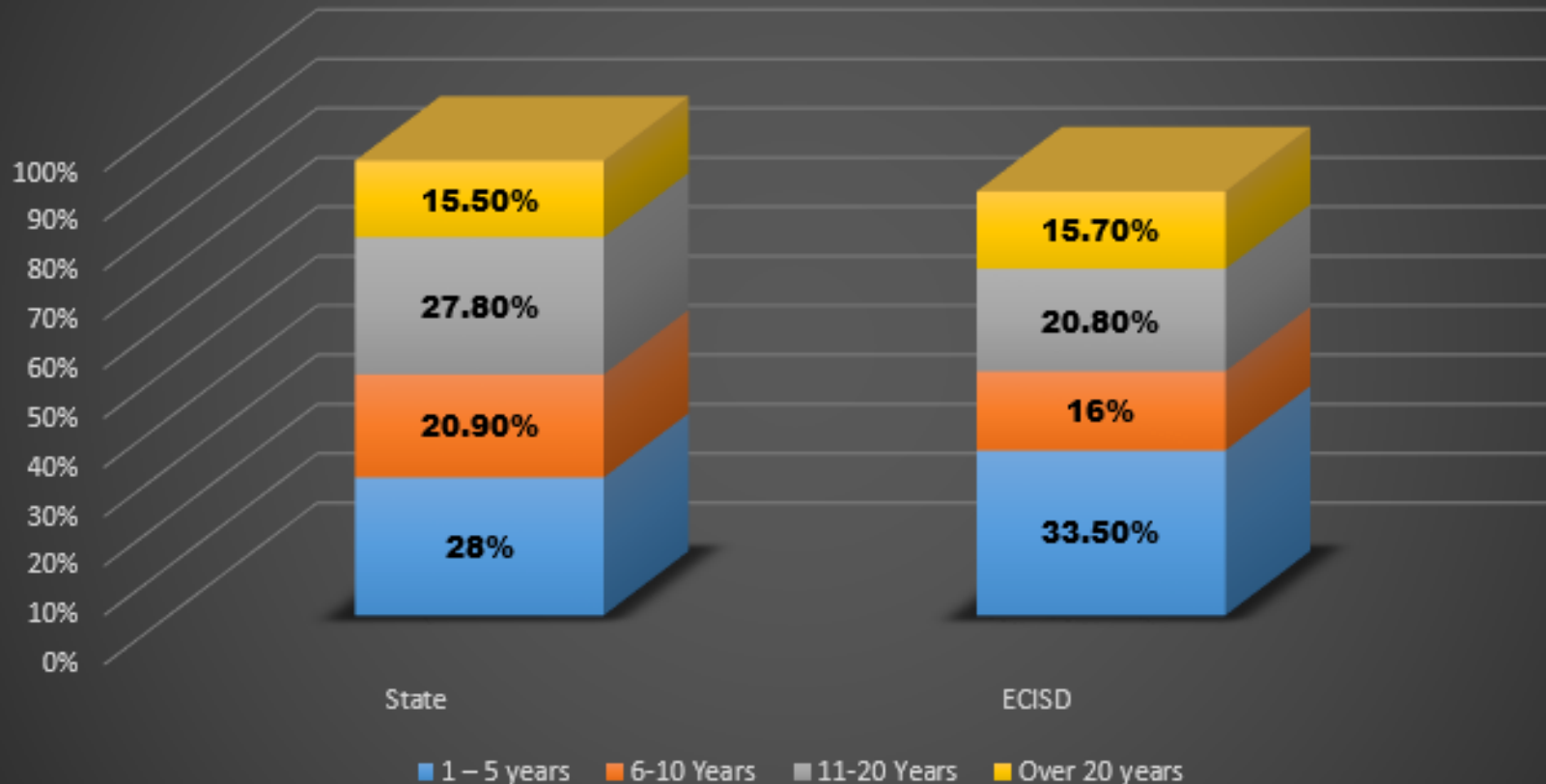
TAPR Report

ECISD Profile

Staff Experience - Pg. 21



Teachers by Years of Experience



Financial Integrity Rating System of Texas & District Accreditation Status



2016-2017 RATINGS BASED ON SCHOOL YEAR 2015-2016 DATA - DISTRICT STATUS DETAIL

Name: **ECTOR COUNTY ISD(068901)**

Publication Level 1: 8/8/2017 2:29:29 PM

Status: **Passed**

Publication Level 2: 8/8/2017 2:29:29 PM

Rating: A = Superior

Last Updated: 11/3/2017 9:39:51 AM

District Score: 98

Passing Score: 60

Note: Please see the last slide for details on the webpage location for the Financial Data Report

Student Performance in Postsecondary Institutions Texas Higher Education Coordinating Board Report



		Texas High School Graduates from FY2015 Enrolled in Texas Public or Independent Higher Education in FY 2016							
County	District	Total Graduates	GPA for 1st Year in Public Higher Education in Texas					Unk	
			<2.0	2.0- 2.49	2.5- 2.99	3.0- 3.49	>3.5		
ECTOR									
ECTOR COUNTY ISD									
	068901011	GEORGE H W BUSH NEW TECH ODESSA							
		Four-Year Public University	19	2	2	3	7	5	0
		Two-Year Public Colleges	19	8	4	1	1	2	3
		Independent Colleges & Universities	0						
		Not Trackable	4						
		Not Found	20						
		Total High School Graduates	62						
			61%						
	068901002	ODESSA H S							
		Four-Year Public University	136	20	19	26	42	27	2
		Two-Year Public Colleges	237	90	35	24	45	26	17
		Independent Colleges & Universities	6						
		Not Trackable	26						
		Not Found	280						
		Total High School Graduates	685						
			55%						
	068901003	PERMIAN H S							
		Four-Year Public University	135	21	20	34	36	24	0
		Two-Year Public Colleges	199	56	24	31	37	30	21
		Independent Colleges & Universities	9						
		Not Trackable	20						
		Not Found	303						
		Total High School Graduates	666						
			52%						

Source: Texas Higher Education Coordinating Board and Texas Education Agency
 "Not found" graduates have standard ID numbers that were not found in the specified year at Texas higher education institutions.
 "Not trackable" graduates have non-standard ID numbers that will not find a match at Texas higher education institutions.
 Includes high schools with more than 25 graduates. If enrollment in public higher education less than 5, the GPA data is omitted.

Report on Violent or Criminal Incidents



TEXAS EDUCATION AGENCY
 COUNT OF STUDENTS AND INCIDENTS BY DISCIPLINE ACTION REASONS
 AND DISCIPLINE ACTION GROUPS
 PEIMS 2015-2016 DATA
 District: ECTOR COUNTY ISD 068901

DISCIPLINE REASON	ISS STUDENTS	ISS ACTIONS	OSS STUDENTS	OSS ACTIONS	DAEP STUDENTS	DAEP ACTIONS	JJAEP STUDENTS	JJAEP ACTIONS	EXPUL STUDENTS	EXPUL ACTIONS
01-PERMANENT REMOVAL BY TEACHER	0	0	N/A	N/A	0	0	0	0	0	0
02-CONDUCT PUNISHABLE AS A FELONY	N/A	N/A	7	8	11	11	0	0	0	0
04-CONTROLLED SUBSTANCE/DRUGS	N/A	N/A	304	462	329	378	0	0	23	24
05-ALCOHOL VIOLATION	N/A	N/A	26	35	27	28	0	0	0	0
07-PUBLIC LEWDNESS/INDCT EXPOSURE	0	0	N/A	6	8	8	0	0	0	0
08-RETALIATION AGAINST DIST EMPL	0	0	N/A	N/A	N/A	N/A	0	0	0	0
09-TITLE 5 FELONY - OFF CAMPUS	0	0	N/A	N/A	5	5	0	0	N/A	N/A
11-FIREARM OR HANDGUN VIOLATION	0	0	N/A	N/A	N/A	N/A	0	0	N/A	N/A
12-UNLAWFL CRRY OF AN ILEGL KNIFE	0	0	N/A	N/A	N/A	N/A	0	0	0	0
14-OFFENSE RELATG TO PROHB WEAPON	0	0	N/A	N/A	N/A	N/A	0	0	N/A	N/A
18-INDECENCY WITH A CHILD	N/A	N/A	N/A	5	N/A	N/A	0	0	N/A	N/A
21-VIOLATED LOCAL CODE OF CONDUCT	3,277	7,203	1,716	3,823	78	82	0	0	0	0
22-CRIMINAL MISCHIEF	N/A	N/A	8	9	0	0	0	0	0	0
26-TERRORISTIC THREAT	0	0	7	8	8	8	0	0	0	0
27-ASSAULT-DISTRICT EMPLOYEE	0	0	20	30	23	28	0	0	N/A	N/A
28-ASSAULT-NONDISTRICT EMPLOYEE	N/A	N/A	23	28	24	25	0	0	0	0
30-AGG ASSAULT-NONDIST EMPLOYEE	0	0	N/A	N/A	N/A	N/A	0	0	7	7
32-SEXUAL ASSAULT-NONDIST EMPLOYEE	0	0	0	0	0	0	0	0	N/A	N/A
33-TOBACCO	N/A	N/A	N/A	N/A	0	0	0	0	0	0
34-SCHOOL-RELATED GANG VIOLENCE	8	9	11	18	9	9	0	0	0	0
35-FALSE ALARM/FALSE REPORT	N/A	N/A	22	29	25	26	0	0	N/A	N/A
36-FELONY CONTROLLED SUBS VIOLAT	0	0	N/A	7	N/A	N/A	0	0	N/A	N/A
41-FIGHTING/MUTUAL COMBAT	313	376	930	1,555	N/A	N/A	0	0	0	0
46-AGGRAVATED ROBBERY	0	0	0	0	N/A	N/A	0	0	0	0
59-SERIOUS MISBEHAV WHILE IN DAEP	0	0	5	5	0	0	0	0	0	0

Resources and Availability of Annual Report



- Texas Education Agency
 - TAPR Glossary available on the district website.
 - Link to TEA TAPR website found on district website.
- ECISD
 - The District's Annual Report is available on the district's accountability website.
 - Campus TAPR reports are available on campus websites.
 - Paper copies of the district's annual report are available at central office in the accountability office.
 - Paper copies of campus TAPR reports are in the front office of each campus.

Resources and Availability of Annual Report



- Texas Education Agency Links

- › <https://rptsvr1.tea.texas.gov/perfreport/tapr/>
- › <http://tea.texas.gov/financialstandardreports/>
- › <http://tea.texas.gov/accredstatus/>
- › http://tea.texas.gov/Texas_Schools/Safe_and_Healthy_Schools/
- › <http://www.txhighereddata.org/Interactive/HSCollLinkFilters/HSGradAcademicPerformance.cfm>
- › <https://rptsvr1.tea.texas.gov/perfreport/account/2016/masking.html>