

# Sherburne & Northern Wright Special Education Cooperative

Becker Board of Education



March 6, 2023

# Agenda

01

**Who We Are:**  
What is the SNWSEC?

02

**What We Do:**  
How to we partner with Becker?



01

**Who We Are**



# **Sherburne & Northern Wright Special Education Cooperative**

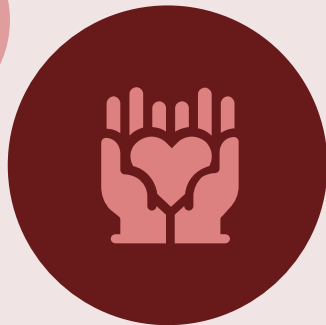
Minnesota School District 6090-52

# SNWSEC - July 1, 2021

**Becker**



**Big Lake**



**Monticello**

# Key SNWSEC Numbers

**10,370**

Total number of students in our member districts - Becker, Big Lake, Monticello, & SNWSEC Programs

**1,964**

Number of students who receive special education services

**18.9%**

Percent of students in our member districts who receive special education services

**16.9%**

Percent of students statewide who receive special education services

# Key Becker Numbers

**2500**

Total number of students in  
Becker

**470**

Number of students who  
receive special education  
services

**18.8%**

Percent of Becker students  
who receive special education  
services

# Why be part of a cooperative?

- Financial Savings
- Legally Required Special Education Services/Licensure
- Professional Learning Opportunities
- Access to Highly Specialized Support & Expertise
- Behind the Scenes Services
- Access to Student Programs
- In the future...Possibly More than Just Special Education!



# SNWSEC Governance

## Superintendent Advisory Council

Superintendents from  
each member district

Meet monthly

Review SNWSEC matters  
before presentation to  
Governing Board

## Governing Board

One School Board  
member from each  
district

Meet every other month

Provide approval for  
SNWSEC budgets and  
policies



02

**What We Do**

# Special Education

Finance

Staffing

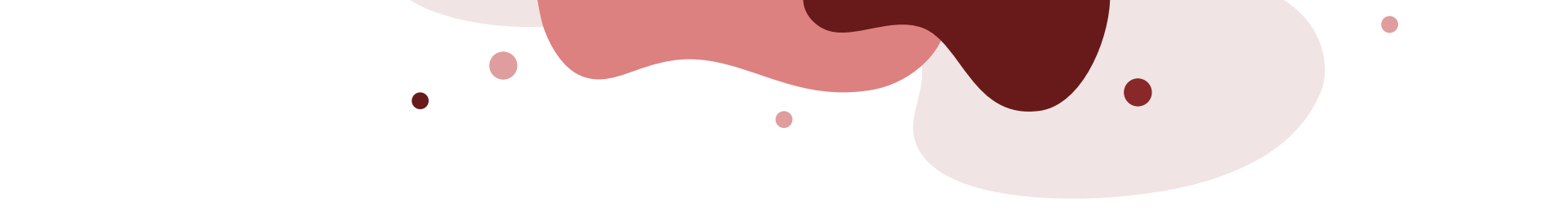
Advocacy

Dispute

Evals &  
IEPS

Instruction

Referral &  
MTSS



The purpose of special education is to ensure that all children with disabilities have available to them a free and appropriate public education that emphasizes special education and related services designed to meet their unique needs and prepare them for further education, employment, and independent living.

***Individuals with Disabilities Education Act***  
**PL 94-142**  
**1975**



# SNWSEC

## Services

- Special Education Administration
- School Psychologists
- Related Services (DHH, VI, PI, ASL, OT, PT)
- Assistive Technology
- Early Childhood Special Education Evaluations
- Special Education Reporting

## Programs

- Birth-3 Early Intervention - Home Visits
- K-12 Center-based DCD/ASD Programs
- Setting IV Programs (DCD/ASD, EBD)
- 18-21 Transition Programs
  - *Connections North*
  - *Connections South*
  - *C5*

# Legal Basis for Special Education



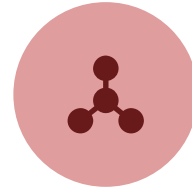
## Federal Regulations

Federal regulations establish minimum requirements



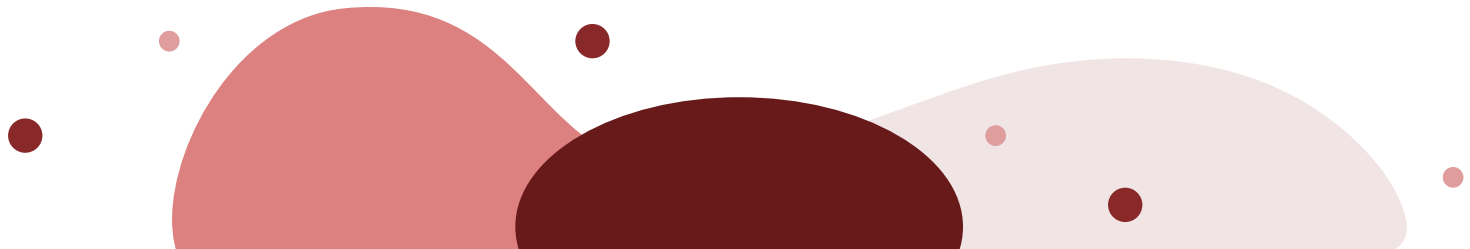
## State Statutes

MDE interprets statute and issues guidance



## Case Law

Helps clarify the federal and state requirements





**Where We Are  
Going...**



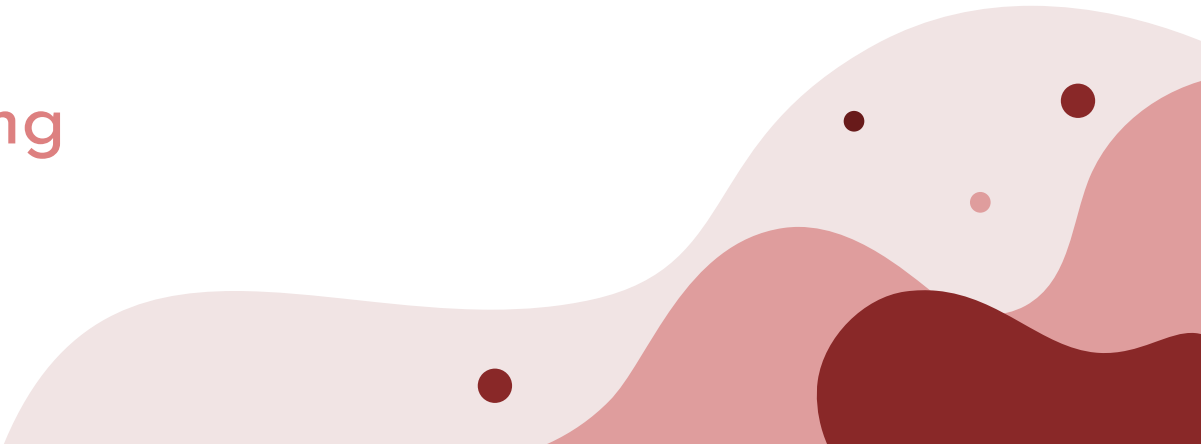


Student  
Programming &  
Achievement

Organizational  
Supports & Services

# Strategic Planning

Safe & Welcoming  
Environments



# Thanks!

John Weekley  
Director of Special Education  
Sherburne & Northern Wright Special Education Cooperative  
Becker - Big Lake - Becker  
[john.weekley@Becker.k12.mn.us](mailto:john.weekley@Becker.k12.mn.us)  
763-272-2051