

May 2018

Derby Public Schools

Performance Dashboard

Irving School

Jennifer Olson, Principal

“People without information cannot act. People with information cannot help but act.”

Ken Blanchard



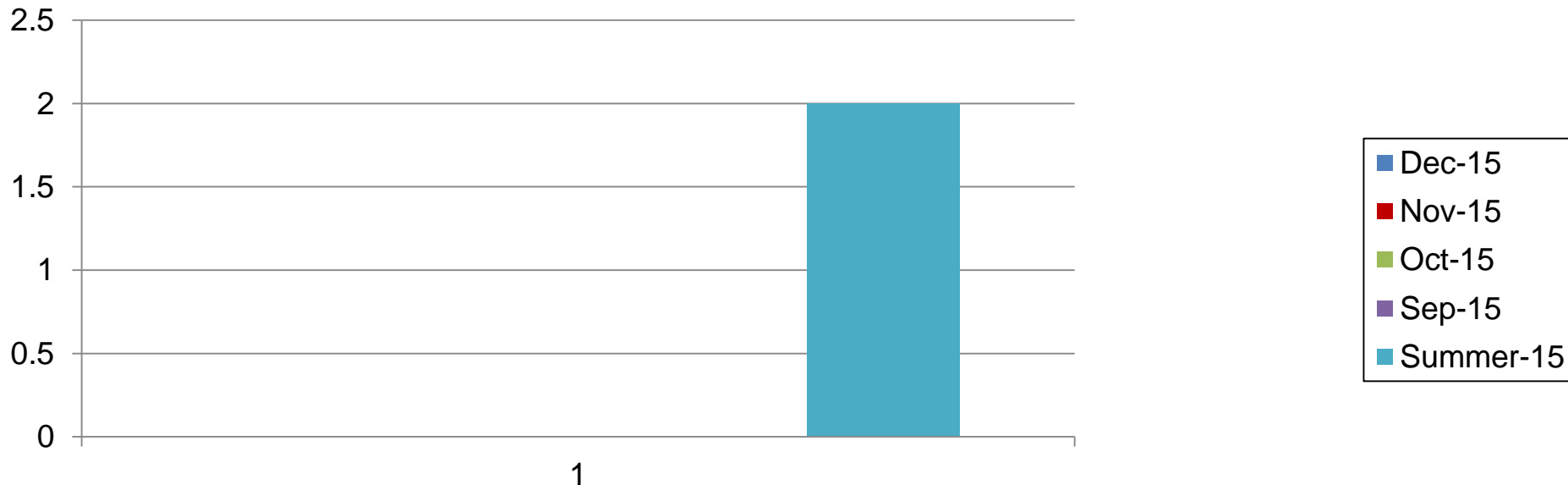
Promotion:

Percent of students promoted

	K	1	2	3	4	5
June 2017	100%	100%	100%	100%	100%	100%
June 2016	100%	100%	100%	100%	100%	100%
June 2015	100%	100%	100%	100%	100%	100%
June, 2014	100%	98%	100%	100%	100%	100%
June, 2013	100%	99%	98%	100%	100%	100%

Departing 5th Grader Plans

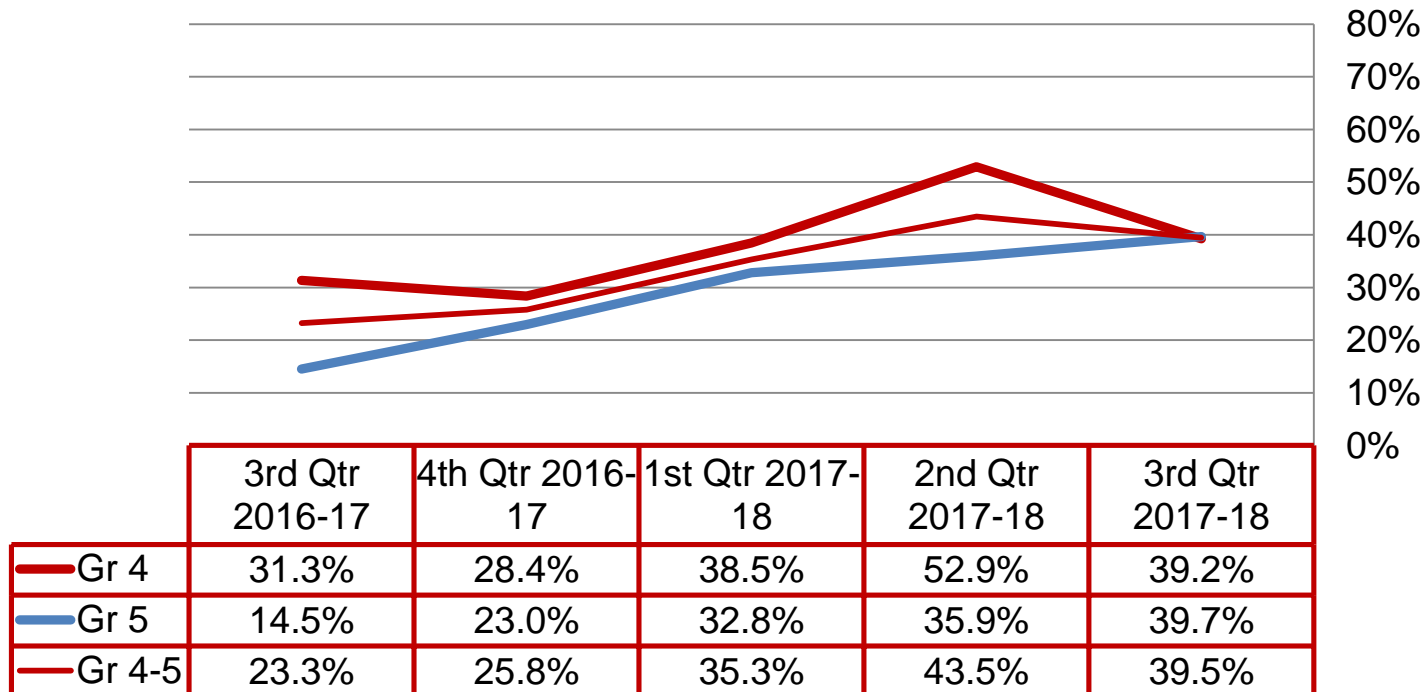
Percent of 5th graders who plan to:



Quarterly Data

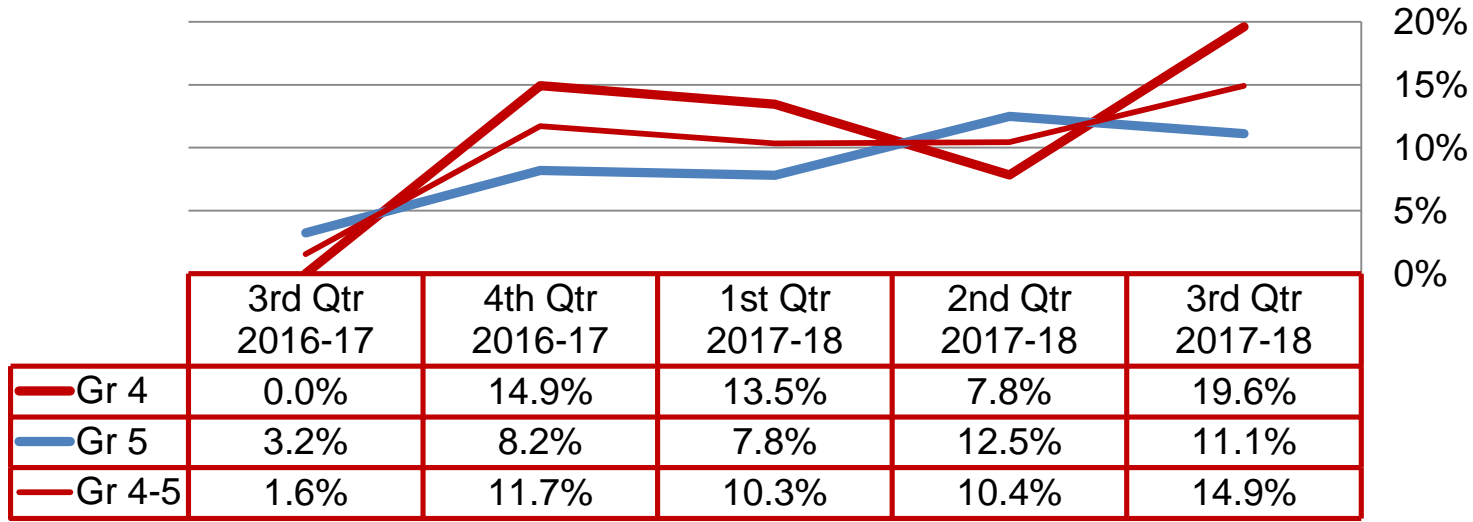
High Grades

Percent of students earning A+, A, A-, B+, B, B- in all subject areas:



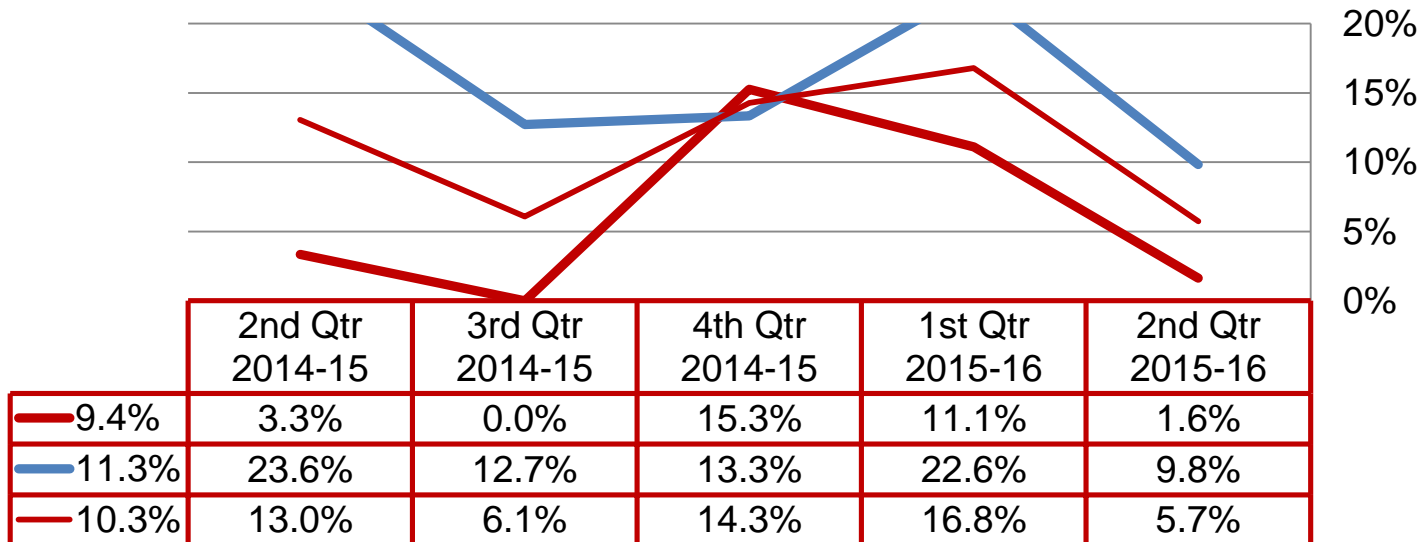
Failing Grades

Percent of students failing at least one course:



Failing Grades

Percent of students failing at least two courses:



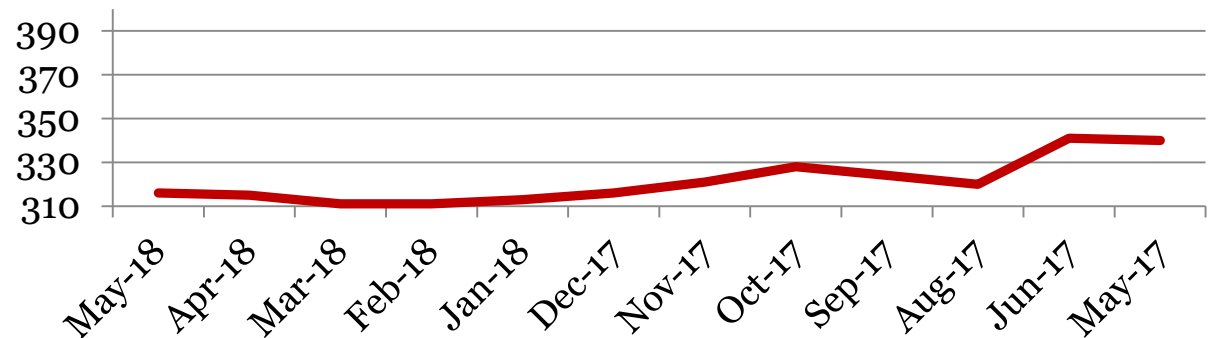
Monthly Data

Irving School

Enrollment – 1st of the month

	K	1	2	3	4	5	Total
May-18	50	45	47	58	52	64	316
Apr-18	50	46	46	58	51	64	315
Mar-18	50	45	46	56	51	63	311
Feb-18	49	46	44	58	50	64	311
Jan-18	49	46	45	58	51	64	313
Dec-17	50	47	45	59	51	64	316
Nov-17	52	49	45	59	52	64	321
Oct-17	53	51	46	61	54	63	328
Sep-17	50	51	45	62	53	63	324
Aug-17	50	50	45	62	52	61	320
Jun-17	46	48	66	53	67	61	341
May-17	45	48	66	53	67	61	340

Total Student Enrollment

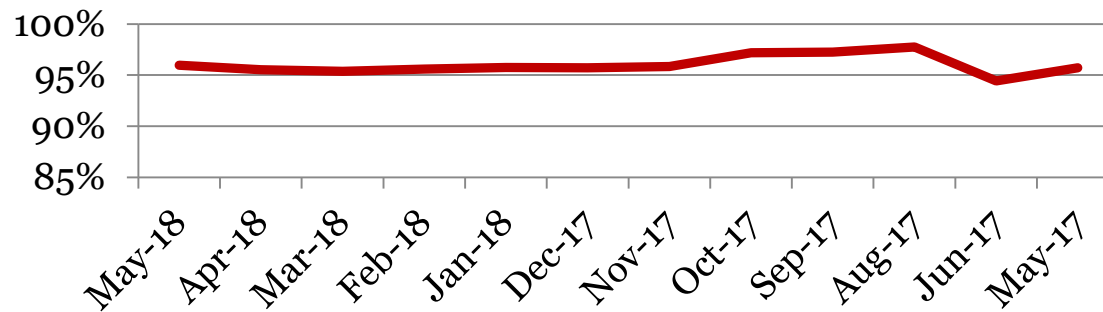


Attendance – Students

Average daily percent present:

	K	1	2	3	4	5	Total
May-18	95.4	94.8	96.1	97.0	95.7	96.4	96.0
Apr-18	94.3	94.6	95.6	97.5	95.1	95.8	95.5
Mar-18	93.0	94.5	95.7	95.8	96.4	96.5	95.4
Feb-18	95.7	94.5	95.0	95.6	95.6	96.7	95.6
Jan-18	94.4	95.1	95.4	96.7	95.5	96.8	95.7
Dec-17	93.2	94.5	97.2	96.9	95.5	96.6	95.7
Nov-17	94.0	94.0	96.4	97.3	96.6	96.2	95.8
Oct-17	97.7	96.2	97.5	97.9	97.6	96.2	97.2
Sep-17	96.9	97.6	97.6	96.8	97.1	97.5	97.2
Aug-17	97.1	97.0	98.9	98.0	96.7	98.8	97.8
Jun-17	95.6	90.5	95.3	93.5	93.8	97.3	94.
May-17	94.1	95.4	96.3	96.0	95.9	96.1	95.7

Total Student Attendance



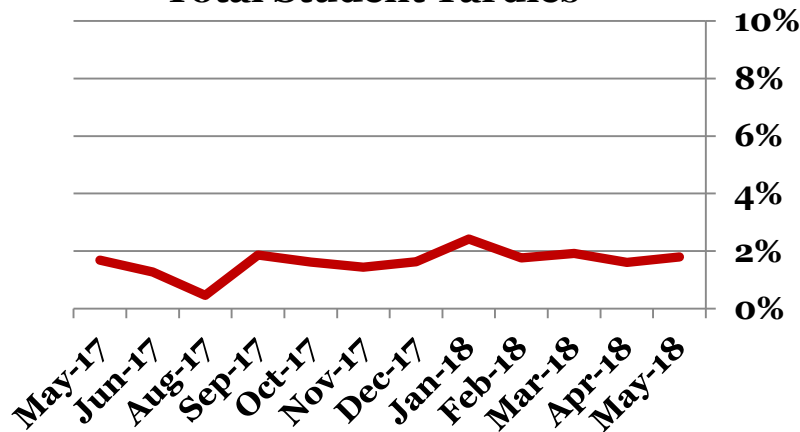
Tardies Average daily percent tardy:

	K	1	2	3	4	5	Total
May-18	2	1	2	1	2	2	2
Apr-18	2	2	2	1	2	1	2
Mar-18	2	2	1	1	3	1	2
Feb-18	2	2	2	2	3	1	2
Jan-18	2	2	3	3	3	1	2
Dec-17	2	1	2	1	2	2	2
Nov-17	2	1	1	1	2	1	1
Oct-17	2	1	1	1	3	2	2
Sep-17	2	2	1	2	3	2	2
Aug-17	1	0	0	0	1	0	0
Jun-17	1	2	1	2	1	2	1
May-17	1	2	1	2	3	2	2

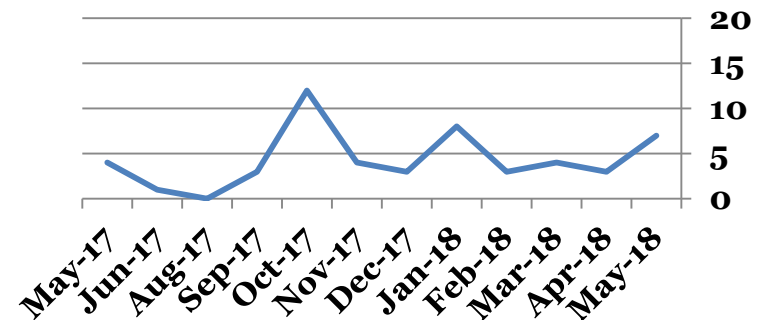
Tardies Number of students tardy 5 or more days:

	K	1	2	3	4	5	Total
May-18	4	0	0	0	1	2	7
Apr-18	1	0	0	0	1	1	3
Mar-18	2	0	0	0	2	0	4
Feb-18	2	0	0	0	1	0	3
Jan-18	3	1	0	1	3	0	8
Dec-17	1	0	1	0	1	0	3
Nov-17	4	0	0	0	0	0	4
Oct-17	4	1	1	0	5	1	12
Sep-17	0	0	0	0	3	0	3
Aug-17	0	0	0	0	0	0	0
Jun-17	0	0	0	0	0	1	1
May-17	1	1	0	0	2	0	4

Total Student Tardies



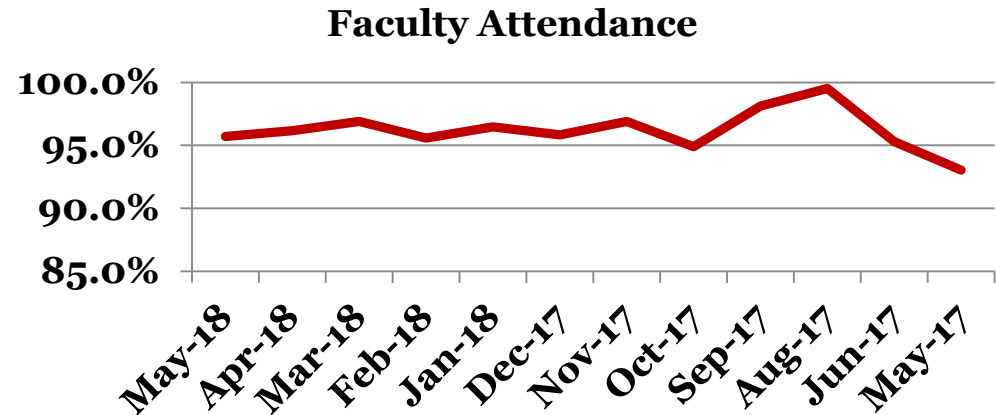
Students over Threshold



Attendance – Faculty

Average daily percent present:

	Total
May-18	95.7
Apr-18	96.2
Mar-18	96.7
Feb-18	95.8
Jan-18	96.5
Dec-17	95.8
Nov-17	96.9
Oct-17	94.9
Sep-17	98.1
Aug-17	99.5
Jun-17	95.3
May-17	93.0



**This indicator reflects certified staff and does not include absences created by class trips, professional development, workman's comp and FMLA. However % may be reduced due to long term illness beyond FMLA.*

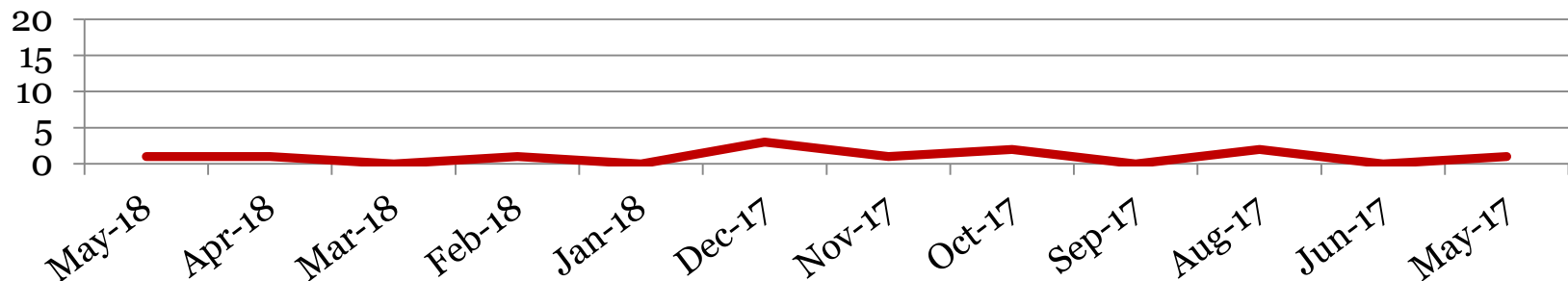
Suspensions – Out of School

Irving School

Number of student suspensions (total days of suspension):

	K		1		2		3		4		5		Total	
May-18	0	(0)	1	(1)	0	(0)	0	(0)	0	(0)	0	(0)	1	(1)
Apr-18	0	(0)	0	(0)	0	(0)	0	(0)	0	(0)	1	(3)	1	(3)
Mar-18	0	(0)	0	(0)	0	(0)	0	(0)	0	(0)	0	(0)	0	(0)
Feb-18	0	(0)	0	(0)	0	(0)	0	(0)	1	(1)	0	(0)	1	(1)
Jan-18	0	(0)	0	(0)	0	(0)	0	(0)	0	(0)	0	(0)	0	(0)
Dec-17	0	(0)	0	(0)	1	(3)	0	(0)	0	(0)	2	(2)	3	(5)
Nov-17	0	(0)	0	(0)	0	(0)	1	(1)	0	(0)	0	(0)	1	(1)
Oct-17	0	(0)	2	(3)	0	(0)	0	(0)	0	(0)	0	(0)	2	(3)
Sep-17	0	(0)	0	(0)	0	(0)	0	(0)	0	(0)	0	(0)	0	(0)
Aug-17	0	(0)	0	(0)	0	(0)	0	(0)	0	(0)	2	(4)	2	(4)
Jun-17	0	(0)	0	(0)	0	(0)	0	(0)	0	(0)	0	(0)	0	(0)
May-17	0	(0)	0	(0)	0	(0)	0	(0)	0	(0)	1	(1)	1	(1)

Total Out of School Suspension



Suspensions – In School

Number of student suspensions (total days of suspension):

	K		1		2		3		4		5		Total	
May-18	0	(0)	0	(0)	0	(0)	0	(0)	0	(0)	3	(3)	3	(3)
Apr-18	0	(0)	0	(0)	0	(0)	0	(0)	1	(1)	0	(0)	1	(1)
Mar-18	0	(0)	0	(0)	0	(0)	0	(0)	3	(3)	0	(0)	3	(3)
Feb-18	0	(0)	0	(0)	0	(0)	0	(0)	2	(2)	0	(0)	2	(2)
Jan-18	0	(0)	0	(0)	0	(0)	0	(0)	1	(0.5)	2	(4)	3	(4.5)
Dec-17	0	(0)	0	(0)	0	(0)	0	(0)	1	(1)	0	(0)	1	(1)
Nov-17	0	(0)	0	(0)	0	(0)	0	(0)	1	(1)	0	(0)	1	(1)
Oct-17	1	(0.5)	0	(0)	0	(0)	1	(1)	2	(2)	3	(5.5)	7	(9)
Sep-17	0	(0)	0	(0)	0	(0)	0	(0)	0	(0)	0	(0)	0	(0)
Aug-17	0	(0)	0	(0)	0	(0)	0	(0)	0	(0)	0	(0)	0	(0)
Jun-17	0	(0)	0	(0)	0	(0)	0	(0)	0	(0)	0	(0)	0	(0)
May-17	0	(0)	0	(0)	0	(0)	2	(3)	4	(5)	3	(6)	9	(14)

Total In School Suspensions

