



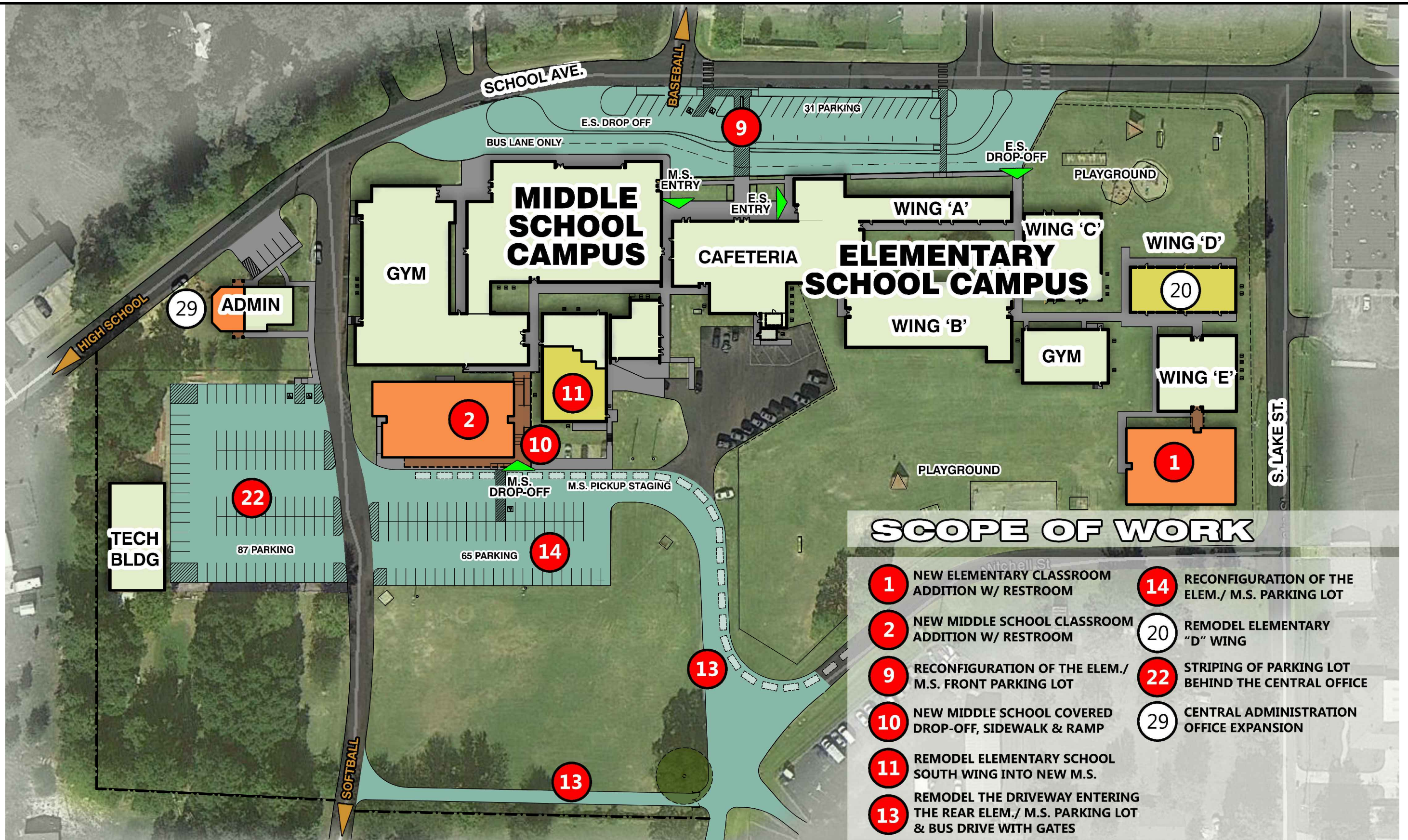
WASKOM

INDEPENDENT SCHOOL DISTRICT

12/14/2015

2015 PROPOSED FACILITIES BOND ISSUE MASTER PLAN FOR THE WASKOM INDEPENDENT SCHOOL DISTRICT

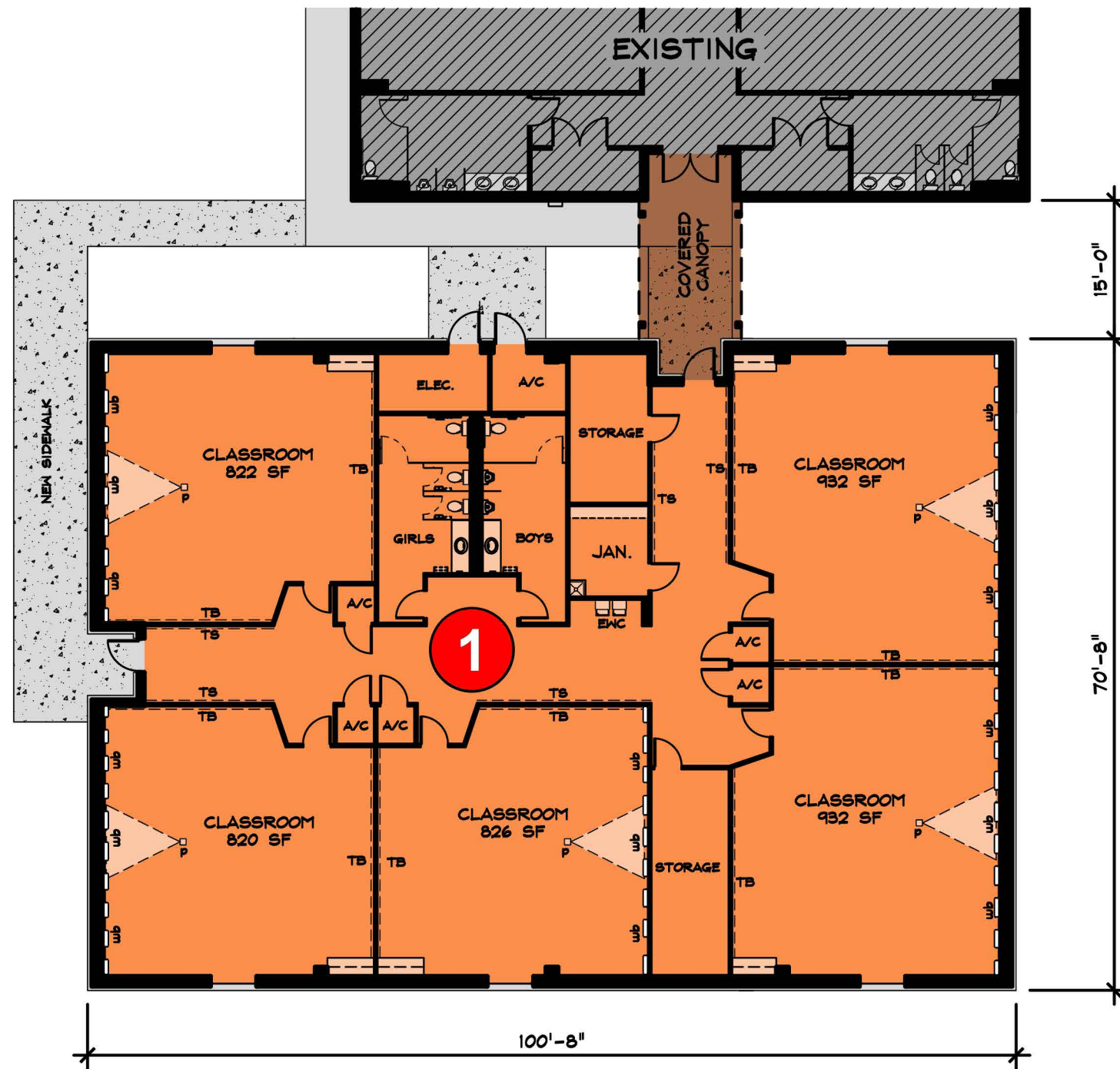
- 1 NEW ELEMENTARY CLASSROOM ADDITION W/ RESTROOMS
- 2 NEW MIDDLE SCHOOL CLASSROOM ADDITION W/ RESTROOMS
- 3 NEW HIGH SCHOOL CLASSROOM ADDITION W/ RESTROOMS
- 4 NEW HIGH SCHOOL PRACTICE GYM WITH COVERED WALKWAY
- 5 NEW HIGH SCHOOL BAND HALL WITH COVERED WALKWAY
- 6 NEW ATHLETIC WEIGHT ROOM & VISITORS LOCKER ROOM
- 7 NEW ATHLETIC FIELD HOUSE
- 8 NEW ATHLETIC STORAGE
- 9 RECONFIGURATION OF THE ELEM./ M.S. FRONT PARKING LOT
- 10 NEW ELEMENTARY SCHOOL COVERED DROP-OFF, SIDEWALK & RAMP
- 11 REMODEL ELEMENTARY SCHOOL SOUTH WING INTO NEW M.S. BAND HALL
- 12 REMODEL THE EXISTING HIGH SCHOOL CAFETORIUM
- 13 REMODEL THE DRIVEWAY ENTERING THE REAR ELEM./ M.S. PARKING LOT & BUS DRIVE W/ GATES
- 14 RECONFIGURATION OF THE ELEM./ M.S. PARKING LOT
- 15 'CATE' SHOP REMODEL
- 16 'CATE' CLASSROOM REMODEL-AG. SCIENCE CLASSROOM
- 17 'CATE' CULINARY ARTS COMMERCIAL KITCHEN REMODEL
- 18 NEW ATHLETIC CENTER NORTH PARKING
- 19 NEW FOOTBALL STADIUM PARKING
- 20 RENOVATE ELEMENTARY 'D' WING
- 21 REMODEL EXISTING HIGH SCHOOL BAND HALL INTO DRAMA CLASSROOM
- 22 STRIPING OF PARKING LOT BEHIND THE CENTRAL OFFICE
- 23 NEW VISITORS CONCESSION STAND / RESTROOMS
- 24 NEW SOFTBALL FIELD PARKING LOT
- 25 NEW BASEBALL FIELD PARKING LOT
- 26 ELEMENTARY "D" WING GUTTERS AND DOWNSPOUTS
- 27 CAMPUS AND DISTRICT SECURITY CAMERAS
- 28 NEW MILTI-PURPOSE ACTIVITY CENTER
- 29 CENTRAL ADMINISTRATION OFFICE EXPANSION



- ### SCOPE OF WORK
- 1** NEW ELEMENTARY CLASSROOM ADDITION W/ RESTROOM
 - 2** NEW MIDDLE SCHOOL CLASSROOM ADDITION W/ RESTROOM
 - 9** RECONFIGURATION OF THE ELEM./ M.S. FRONT PARKING LOT
 - 10** NEW MIDDLE SCHOOL COVERED DROP-OFF, SIDEWALK & RAMP
 - 11** REMODEL ELEMENTARY SCHOOL SOUTH WING INTO NEW M.S.
 - 13** REMODEL THE DRIVEWAY ENTERING THE REAR ELEM./ M.S. PARKING LOT & BUS DRIVE WITH GATES
 - 14** RECONFIGURATION OF THE ELEM./ M.S. PARKING LOT
 - 20** REMODEL ELEMENTARY "D" WING
 - 22** STRIPING OF PARKING LOT BEHIND THE CENTRAL OFFICE
 - 29** CENTRAL ADMINISTRATION OFFICE EXPANSION

ELEMENTARY & MIDDLE SCHOOL - MASTER PLAN





SCOPE OF WORK:

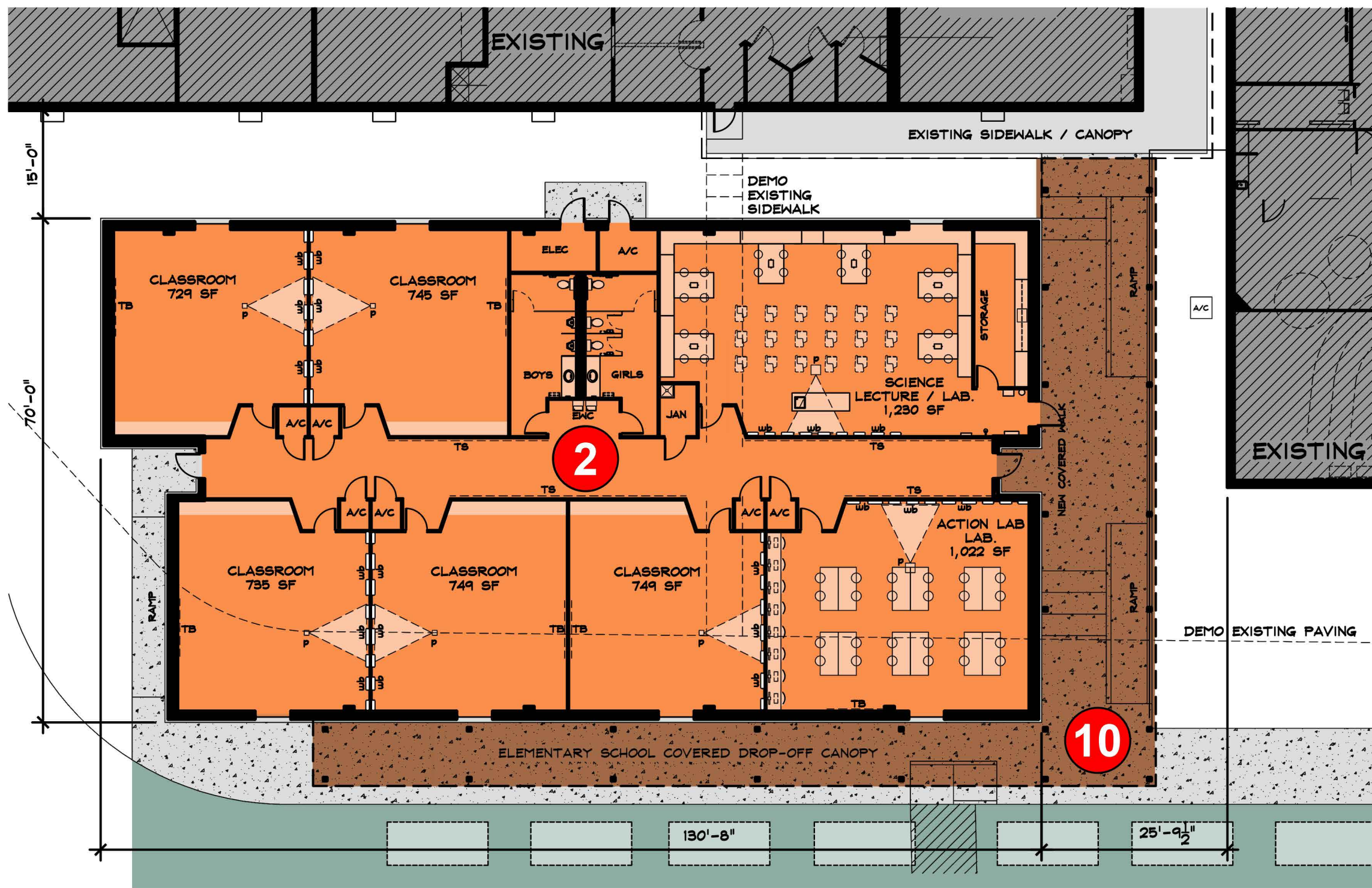
- * SQUARE FOOTAGE: 7,059 SF
- * CLASSROOMS: FIVE (5)
- * RESTROOMS
- * (TS) 4" TACK STRIPS OUTSIDE CLASSROOMS
- * (TB) 4'X8' TACK BOARDS INSIDE CLASSROOMS FULL LENGTH OF TWO (2) WALL
- * (WB) 4'X8' WHITE BOARDS INSIDE CLASSROOMS FULL LENGTH OF ONE WALL



NEW ELEMENTARY CLASSROOMS ADDITION

SCALE: 1/16"=1'-0"





SCOPE OF WORK:

- * DEMOLITION: SIDEWALKS & PARTIAL PARKING AREA
- * SQUARE FOOTAGE: 8,748 SF
- * CLASSROOMS: FIVE (5)
- * ACTION LAB: ONE (1)
- * SCIENCE LECTURE / LAB: ONE (1)
- * NEW CANOPY AREA: 2,278 SF
- * NEW COVERED DROP-OFF CANOPY WITH RAMPS AND STEPS AS REQUIRED
- * RESTROOMS
- * (TS) 4" TACK STRIPS OUTSIDE CLASSROOMS
- * (TB) 4'X8' TACK BOARDS INSIDE CLASSROOMS ON ONE (1) WALL
- * (WB) 4'X8' WHITE BOARDS INSIDE CLASSROOMS FULL LENGTH OF ONE WALL

10 NEW ELEMENTARY SCHOOL COVERED DROP-OFF, SIDEWALK & RAMP

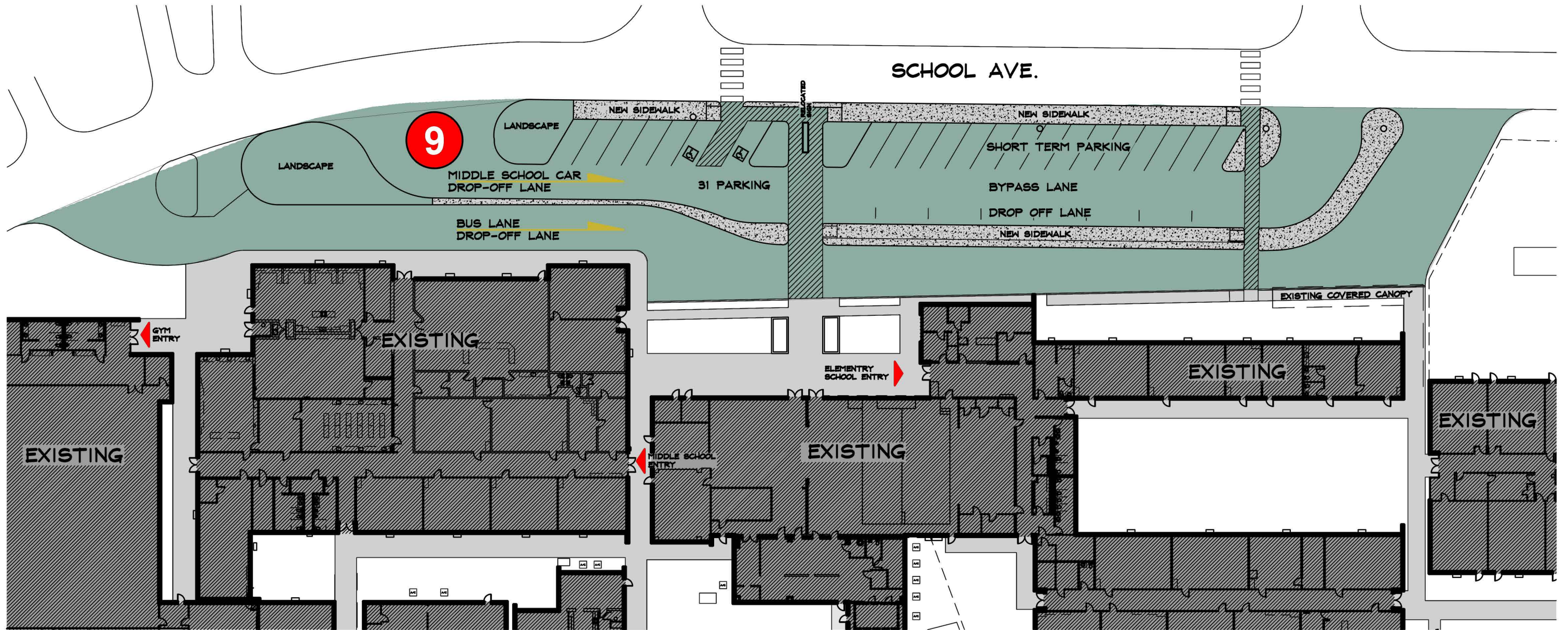
2 NEW MIDDLE SCHOOL CLASSROOM ADDITION

SCALE: 1/16"=1'-0"



SCOPE OF WORK:

- * RECONFIGURE TRAFFIC FLOW: 36,665 SF
- * NEW ENTRANCE DRIVE
- * NEW CURBS / SIDEWALKS
- * NEW H.C. RAMPS, STRIPING & LANDSCAPING
- * RELOCATED SIGN

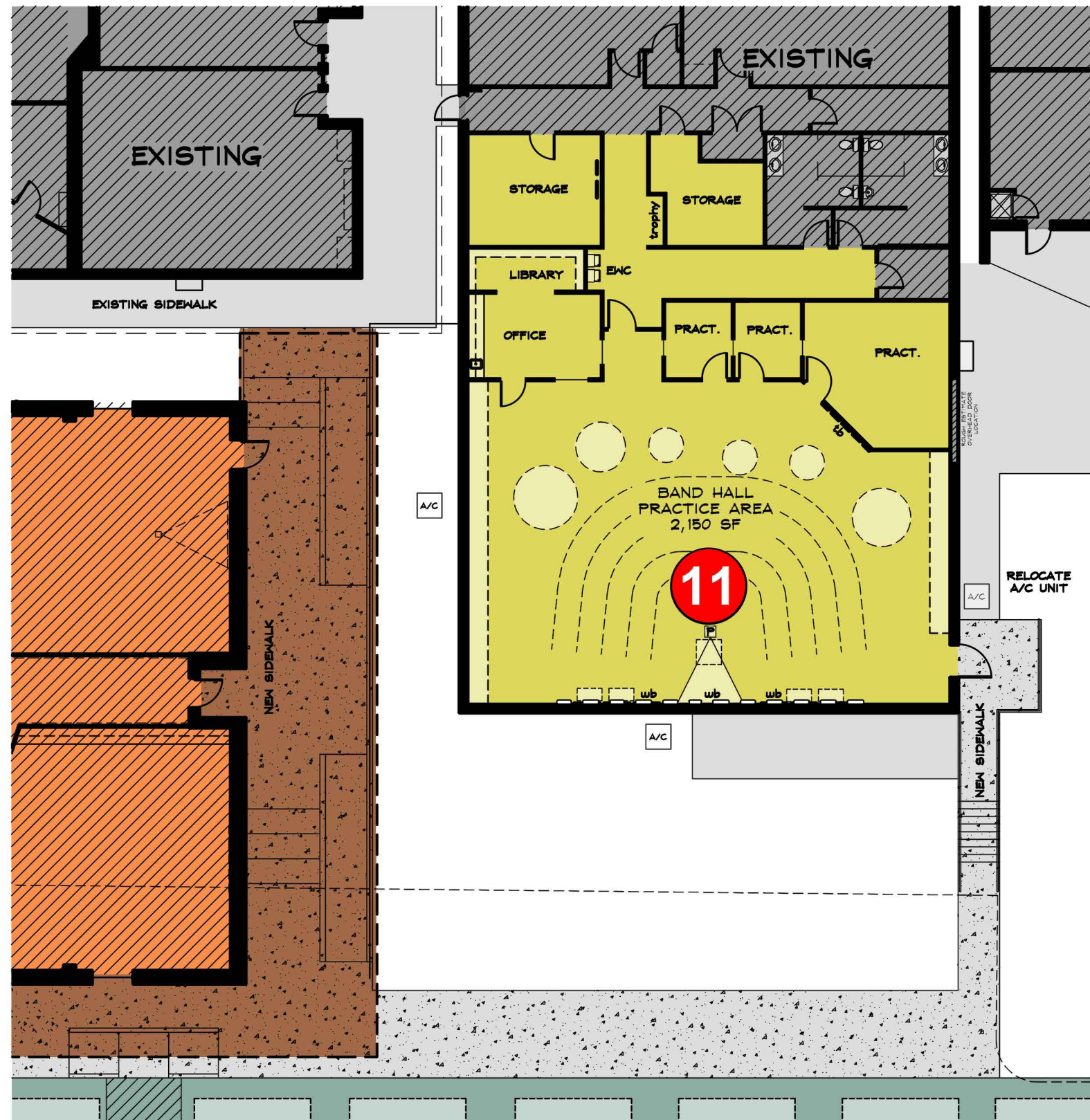


9

RECONFIGURATION OF THE ELEM./ M.S. FRONT PARKING LOT

SCALE: N.T.S.





SCOPE OF WORK:

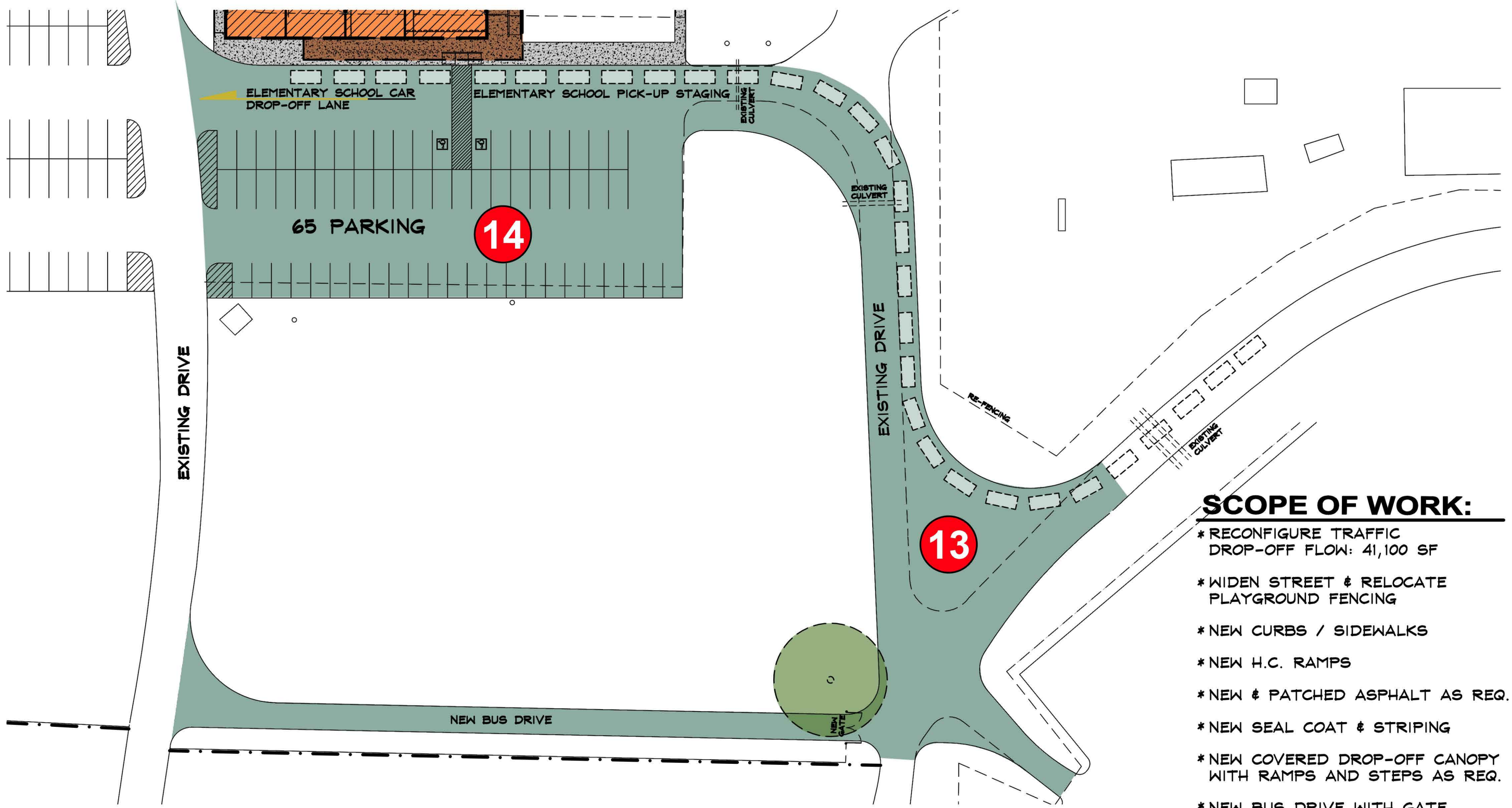
- * DEMOLITION: REMOVE ALL INTERIOR WALLS, M.E.P. & OTHER MISC. ITEMS
- * FINISH OUT: ALL NEW ARCHITECTURAL/ M.E.P. & MISC. ITEMS
- * SQUARE FOOTAGE FOR BAND HALL REMODEL: 3,600 SF
- * BAND HALL: ONE (1)

11

REMODEL M.S. SOUTH WING INTO NEW M.S. BAND HALL

SCALE: 1/16"=1'-0"





SCOPE OF WORK:

- * RECONFIGURE TRAFFIC DROP-OFF FLOW: 41,100 SF
- * WIDEN STREET & RELOCATE PLAYGROUND FENCING
- * NEW CURBS / SIDEWALKS
- * NEW H.C. RAMPS
- * NEW & PATCHED ASPHALT AS REQ.
- * NEW SEAL COAT & STRIPING
- * NEW COVERED DROP-OFF CANOPY WITH RAMPS AND STEPS AS REQ.
- * NEW BUS DRIVE WITH GATE

14 RECONFIGURATION OF THE ELEM. / M.S. PARKING LOT
13 REMODEL THE DRIVEWAY ENTERING PARKING LOT
 SCALE: N.T.S.



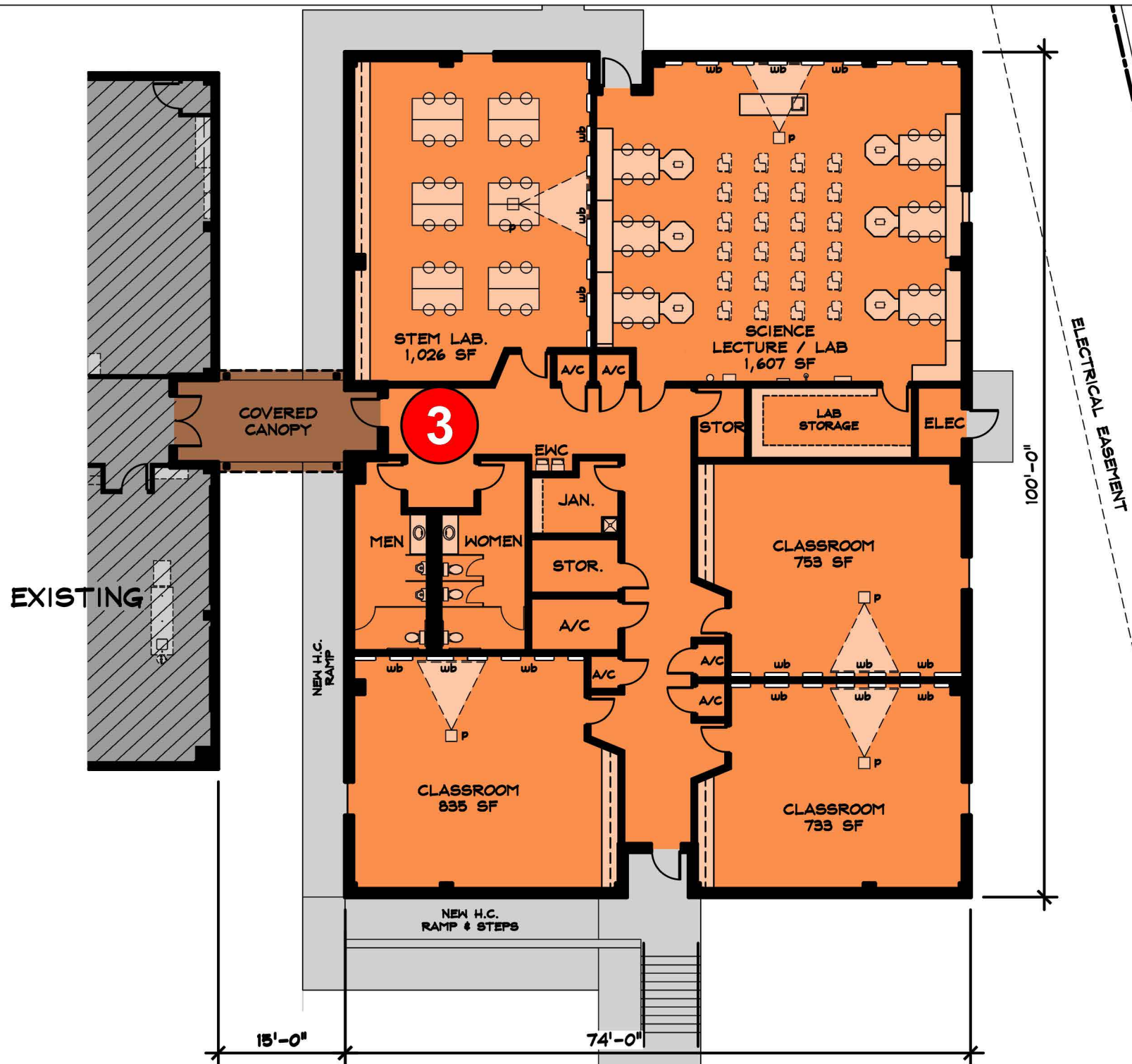


SCOPE OF WORK

- 3** NEW HIGH SCHOOL CLASSROOM ADDITION W/ RESTROOMS
- 4** NEW HIGH SCHOOL PRACTICE GYM W/ COVERED WALKWAY
- 5** NEW HIGH SCHOOL BAND HALL W/ COVERED WALKWAY
- 12** REMODEL THE EXISTING HIGH SCHOOL CAFETORIUM
- 15** 'CATE' SHOP REMODEL
- 16** 'CATE' CLASSROOM REMODEL - AG. SCIENCE CLASSROOM
- 17** 'CATE' CULINARY ARTS COMMERCIAL KITCHEN REMODEL
- 19** NEW ADDITIONAL FOOTBALL STADIUM PARKING
- 21** REMODEL EXISTING H.S. BAND HALL INTO DRAMA CLASSROOM & STORAGE

HIGH SCHOOL - MASTER PLAN





SCOPE OF WORK:

- * SQUARE FOOTAGE: 7,298 SF
- * CLASSROOMS: FOUR (4)
- * STEM LAB: ONE (1)
- * SCIENCE LECTURE / LAB: ONE (1)
- * NEW H.C. RAMPS & STEPS AS REQUIRED
- * RESTROOMS
- * (TB) 4'X8' TACK BOARDS INSIDE CLASSROOMS ON ONE (1) WALL
- * (WB) 4'X8' WHITE BOARDS INSIDE CLASSROOMS FULL LENGTH OF ONE WALL

3

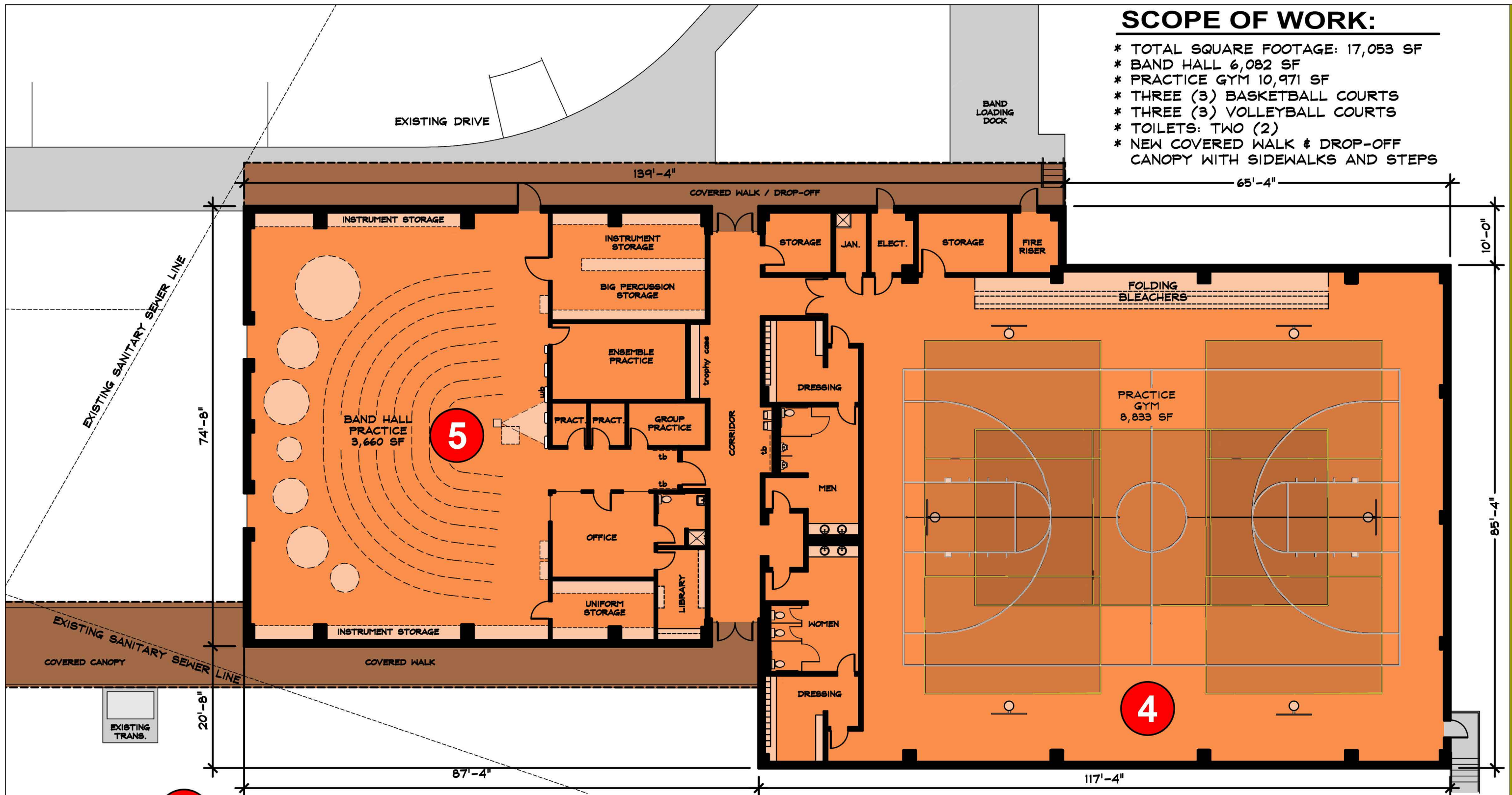
NEW HIGH SCHOOL CLASSROOM ADDITION

SCALE: 1/16"=1'-0"



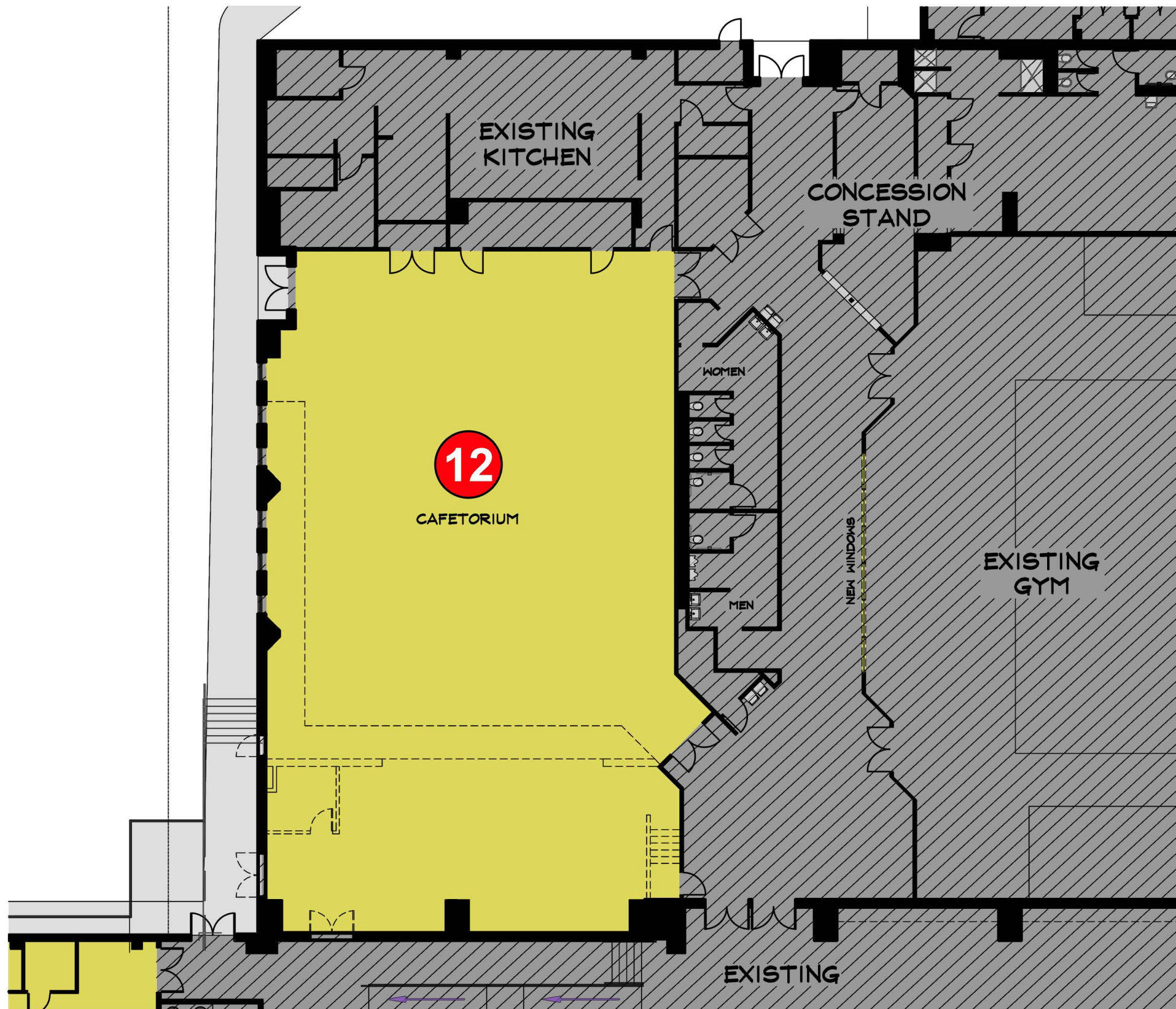
SCOPE OF WORK:

- * TOTAL SQUARE FOOTAGE: 17,053 SF
- * BAND HALL 6,082 SF
- * PRACTICE GYM 10,971 SF
- * THREE (3) BASKETBALL COURTS
- * THREE (3) VOLLEYBALL COURTS
- * TOILETS: TWO (2)
- * NEW COVERED WALK & DROP-OFF CANOPY WITH SIDEWALKS AND STEPS



- 5** NEW HIGH SCHOOL BAND HALL W/ COVERED WALKWAY
 - 4** NEW HIGH SCHOOL PRACTICE GYM W/ COVERED WALKWAY
- SCALE: 1/16"=1'-0"





SCOPE OF WORK:

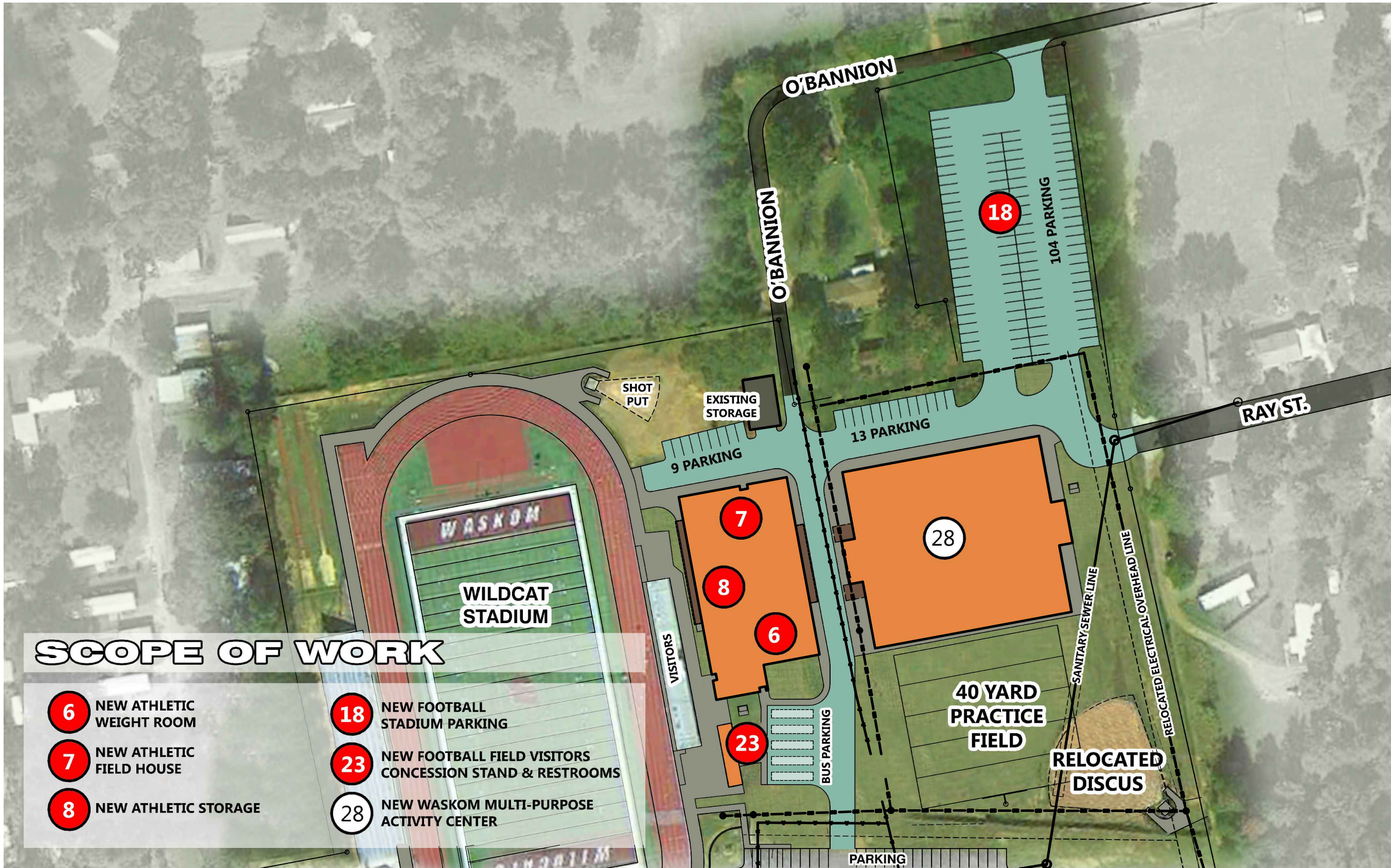
- * DEMOLITION: REMOVE STAGE FROM CAFETERIA, SOME INTERIOR WALLS, M.E.P. & OTHER MISC. ITEMS
- * SQUARE FOOTAGE REMODEL: 5,105 SF
- * FINISH OUT
- * M.E.P. & MISC. ITEMS
- * NEW WINDOW INTO GYM

12

REMODEL THE EXISTING HIGH SCHOOL CAFETORIUM

SCALE: 1/16"=1'-0"



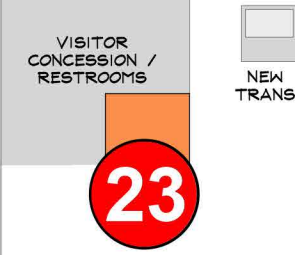
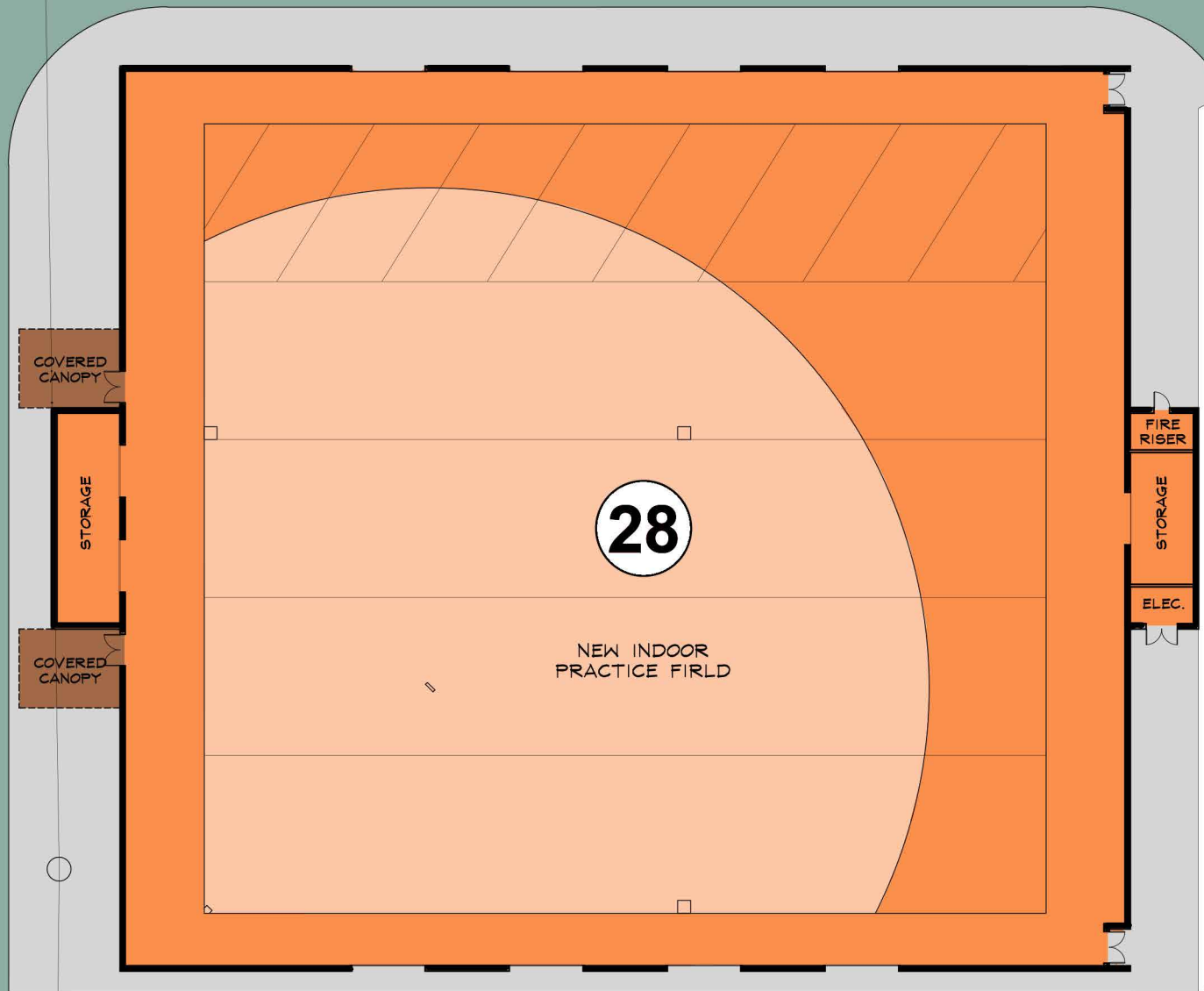


WASKOM MULTI-PURPOSE ACTIVITY CENTER



SCOPE OF WORK:

- * NEW MULTI-PURPOSE ACTIVITY CENTER AND STORAGE SF: 34,116
- * NEW WEIGHT ROOM / FIELD HOUSE AND STORAGE SF: 19,500
- * NEW CANOPY SF: 1,300



28 WASKOM MULTI-PURPOSE ACTIVITY FACILITIES
 SCALE: 1/32"=1'-0"





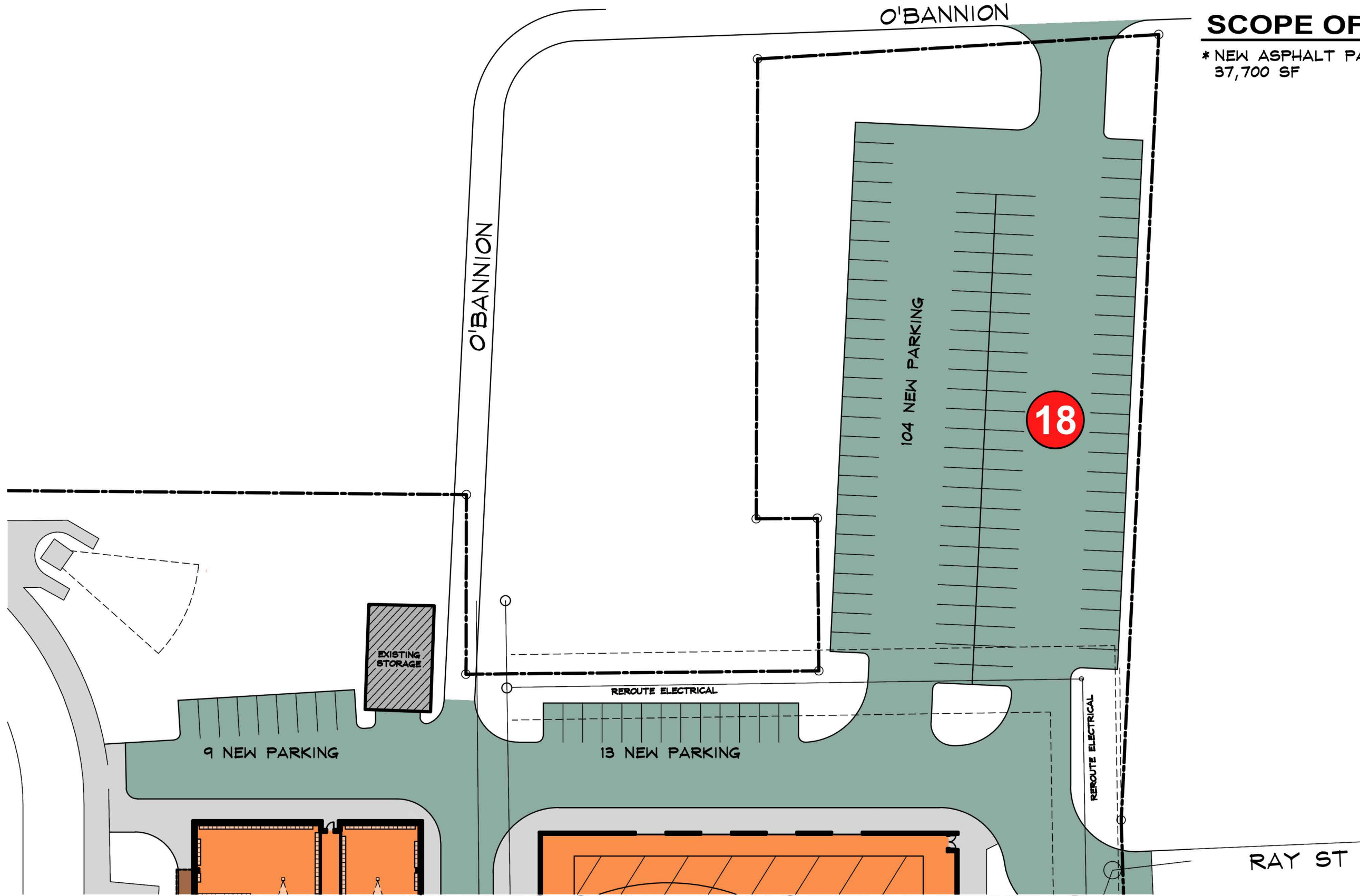
SCOPE OF WORK:

- * SQUARE FOOTAGE FOR "CATE" 16 & 17 REMODEL: 1,717 SF
- * DEMOLITION: REMOVE ALL INTERIOR WALLS, M.E.P. & OTHER MISC. ITEMS
- * FINISH OUT: ALL NEW ARCHITECTURAL/ M.E.P. & MISC. ITEMS
- * SQUARE FOOTAGE FOR AG. MECH SHOP REMODEL: 3,500 SF

15

- 17** 'CATE' CULINARY ARTS COMMERCIAL KITCHEN REMODEL
 - 16** 'CATE' CLASSROOM REMODEL-AG. SCIENCE CLASSROOM
 - 15** 'CATE' SHOP REMODEL
- SCALE: 1/16"=1'-0"





SCOPE OF WORK:

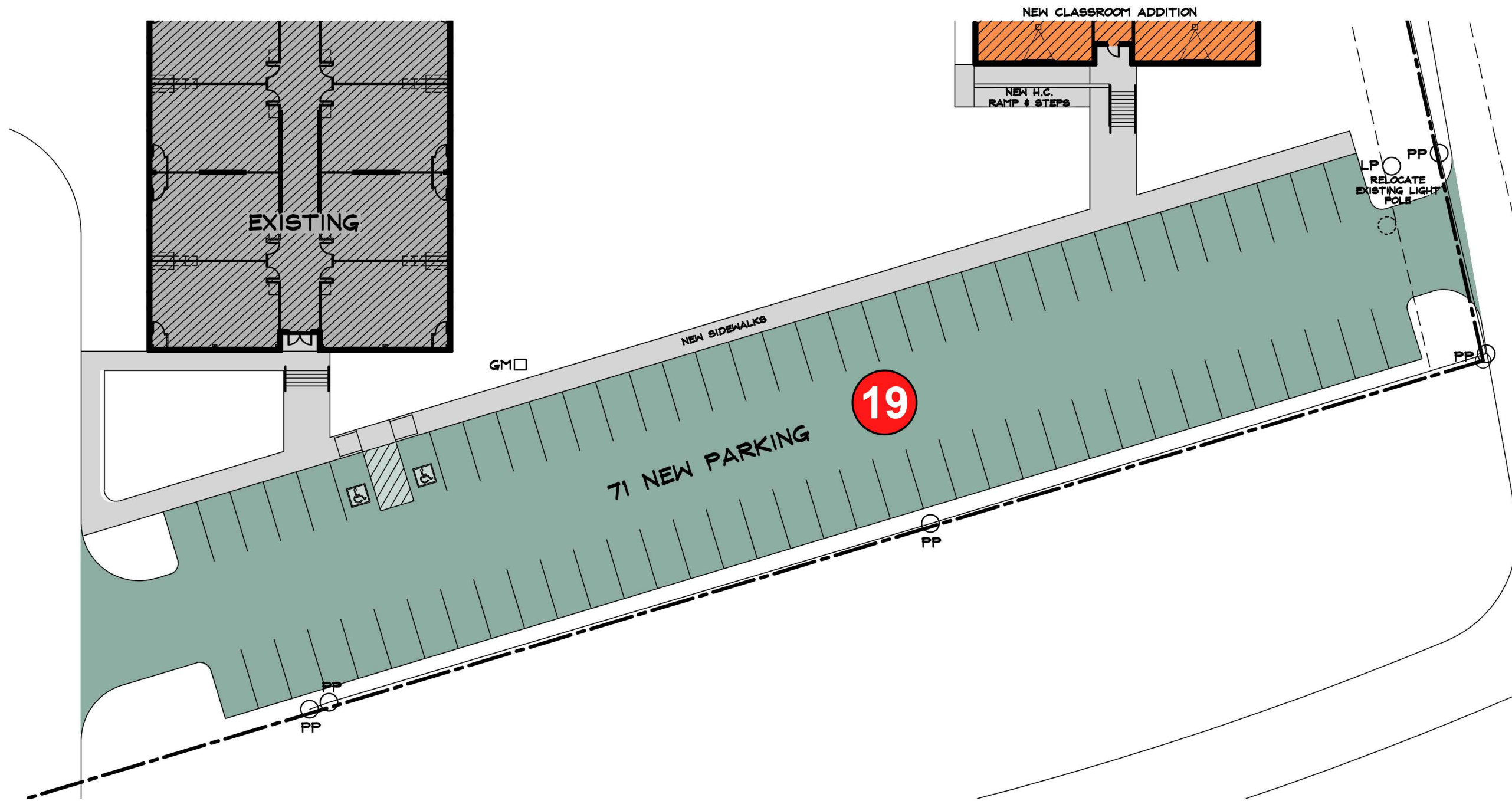
* NEW ASPHALT PARKING FOR 104 CARS
37,700 SF

18 **NEW ATHLETIC CENTER NORTH PARKING**
SCALE: N.T.S.



SCOPE OF WORK:

- * SQUARE FOOTAGE: 19,522 SF
- * NEW ASPHALT PARKING FOR 71 CARS
- * NEW CURBS / SIDEWALKS
- * NEW H.C. RAMPS & STEPS AS REQUIRED



19

NEW ADDITIONAL FOOTBALL STADIUM PARKING

SCALE: N.T.S.



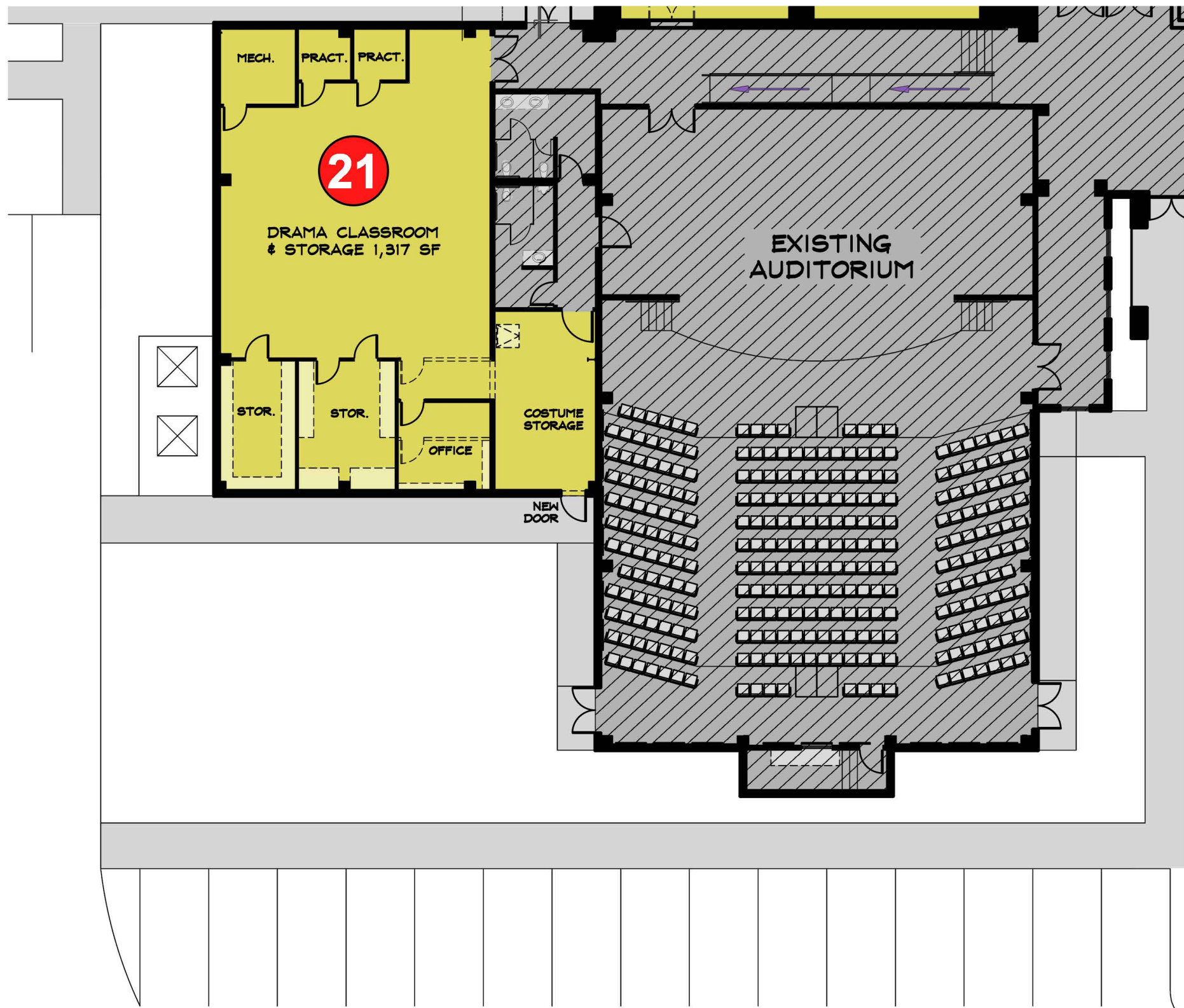


SCOPE OF WORK:

- * RENOVATE EXISTING FLOORING, CEILING, PAINT, ETC.
- * SQUARE FOOTAGE RENOVATED: 4,179 SF
- * CLASSROOMS: SIX (6)

20 REMODEL ELEMENTARY "D" WING
 SCALE: 1/16"=1'-0"





SCOPE OF WORK:

- * SQUARE FOOTAGE REMODEL: 2,479 SF
- * THEATER ARTS
- * SPEECH DEPARTMENT
- * NEW EXTERIOR DOOR

REMODEL EXISTING H.S. BAND HALL INTO DRAMA CLASSROOMS & STORAGE

21

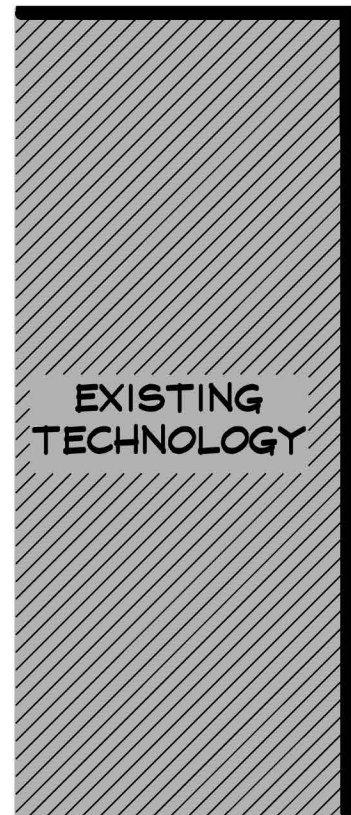
SCALE: 1/16"=1'-0"





SCOPE OF WORK:

- * NEW STRIPING: 28,100 SF
- * NEW H.C. PARKING & SIDEWALK ACCESS TO ADMIN BUILDING



87 PARKING

22

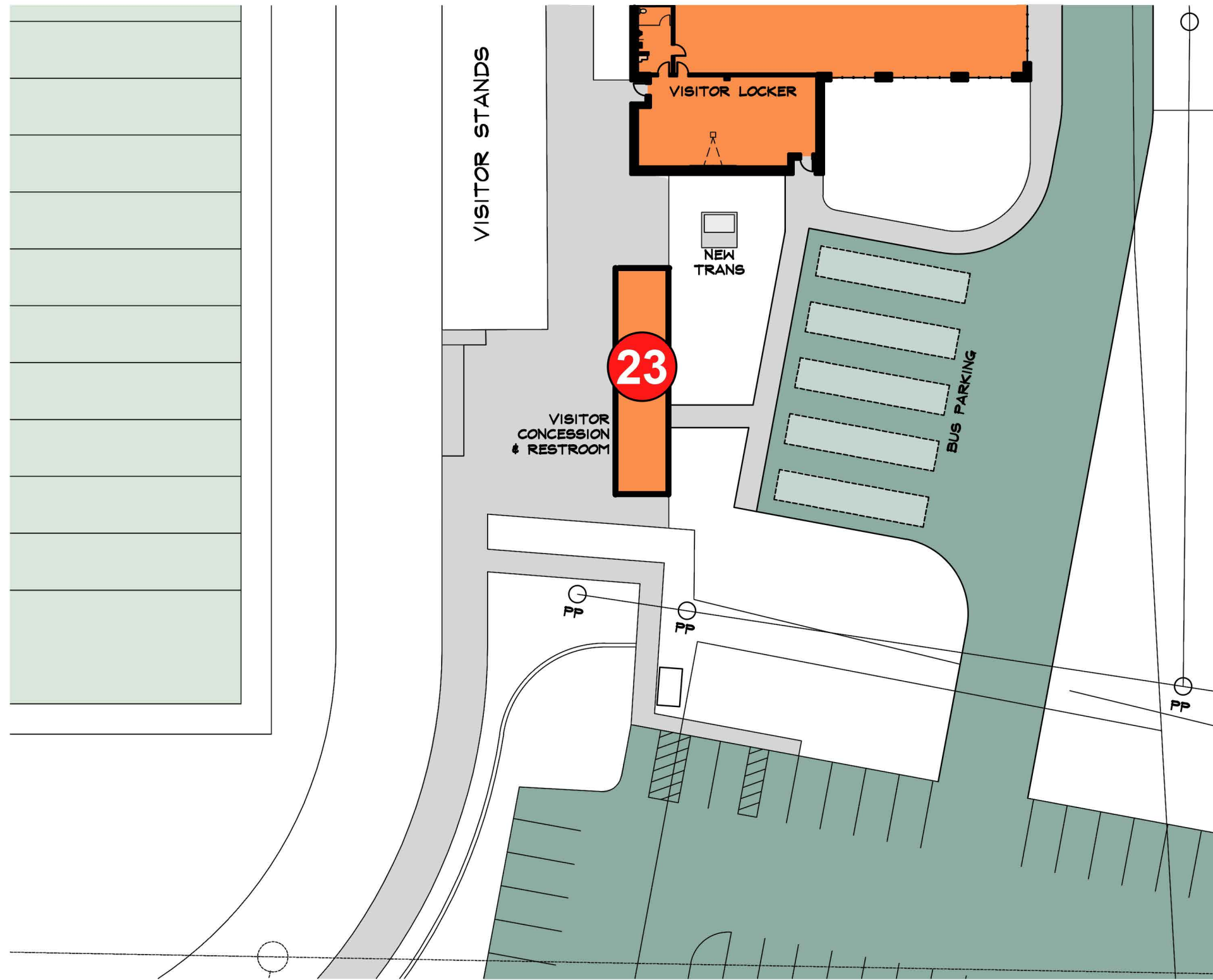
EXISTING DRIVE

22

STRIPING OF PARKING LOT BEHIND THE CENTRAL OFFICE

SCALE: N.T.S.





SCOPE OF WORK:

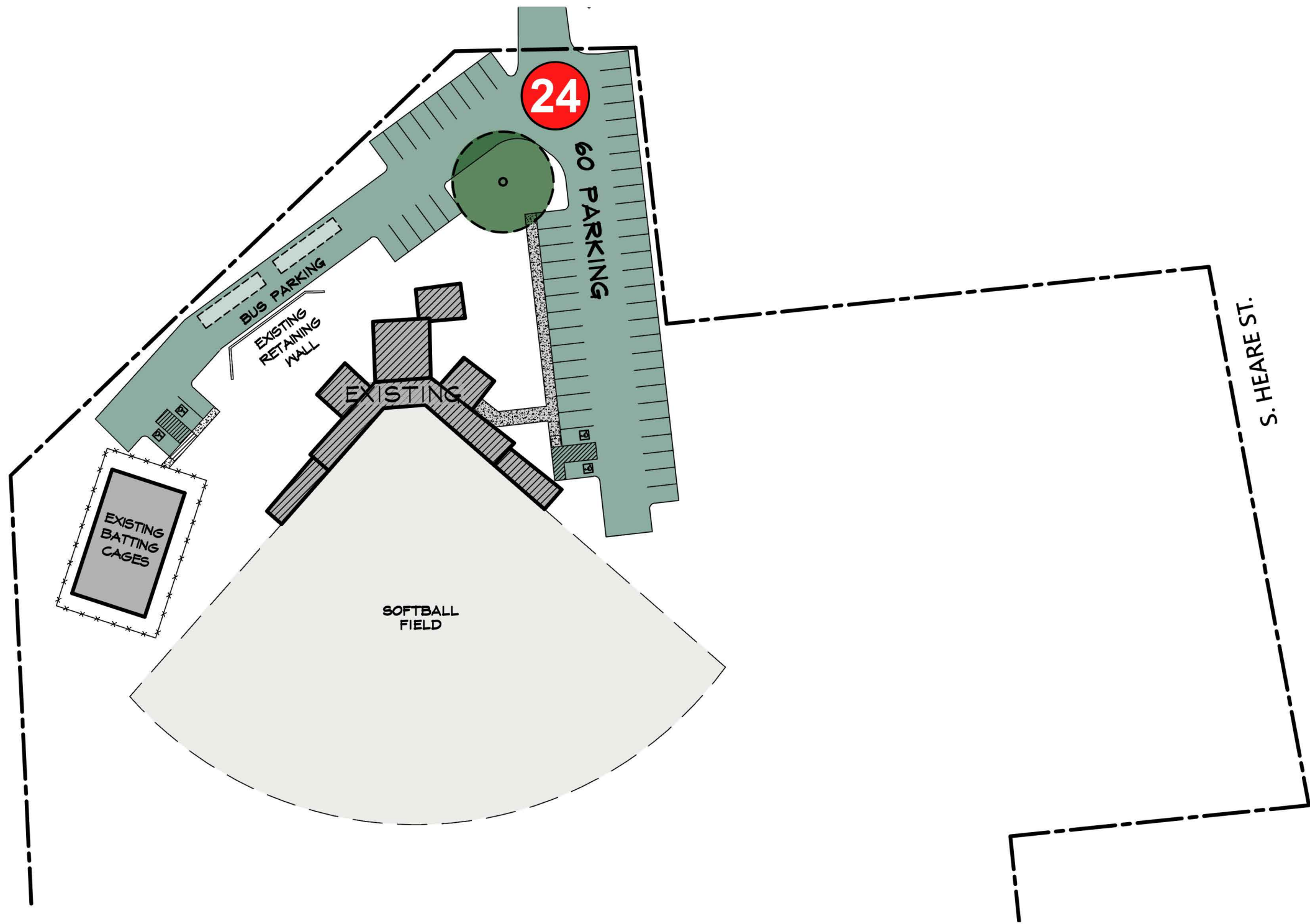
* NEW VISITOR CONCESSION & RESTROOM
 SQUARE FOOTAGE: 840 SF

23

NEW FOOTBALL FIELD VISITORS CONCESSION STAND & RESTROOMS

SCALE: 1/32"=1'-0"





SCOPE OF WORK:

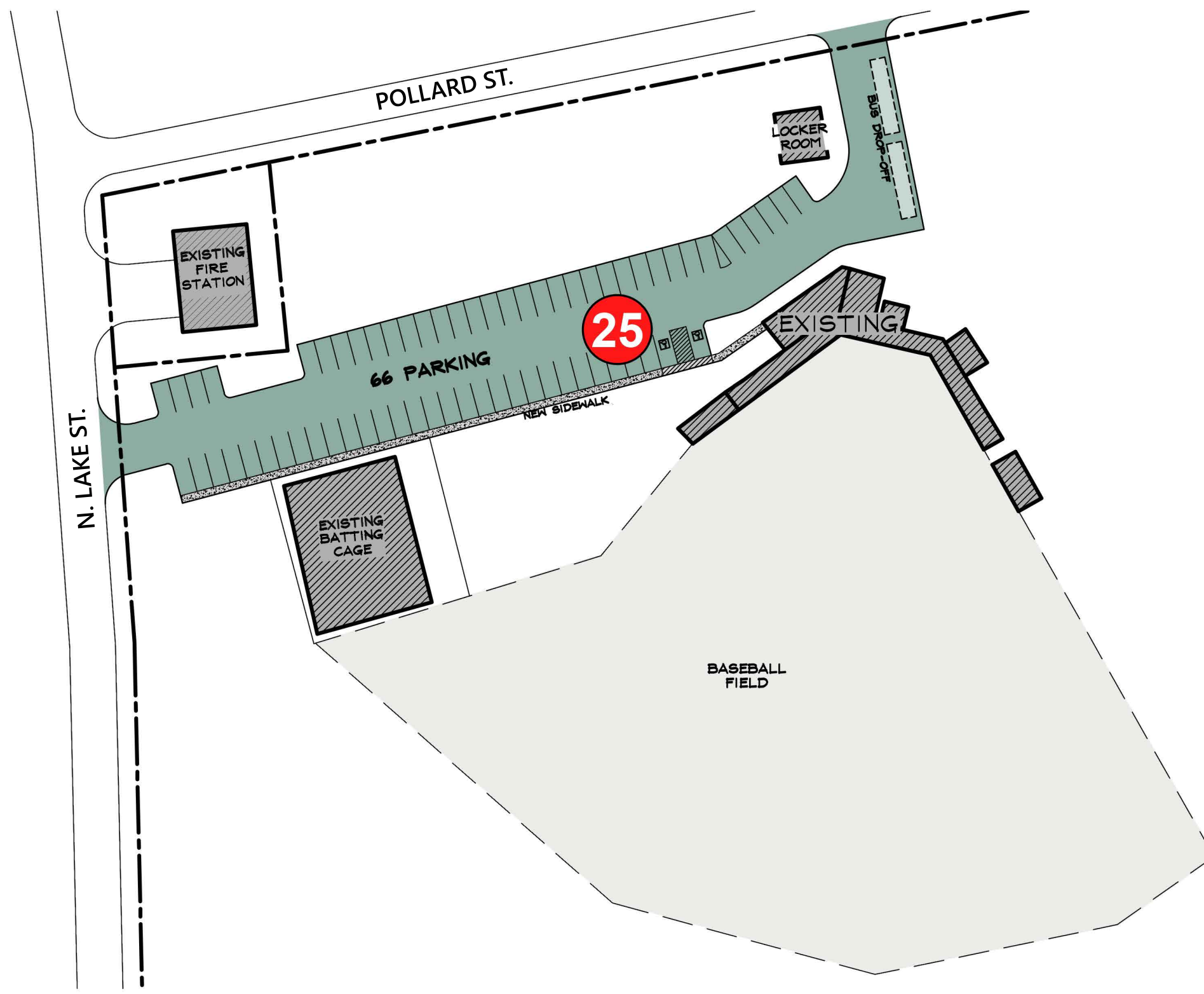
- * SQUARE FOOTAGE: 23,850 SF
- * NEW ASPHALT PARKING FOR 60 CARS
- * NEW CURBS / SIDEWALKS
- * NEW H.C. RAMPS AS REQUIRED

24

SOFTBALL FIELD PARKING LOT

SCALE: N.T.S.



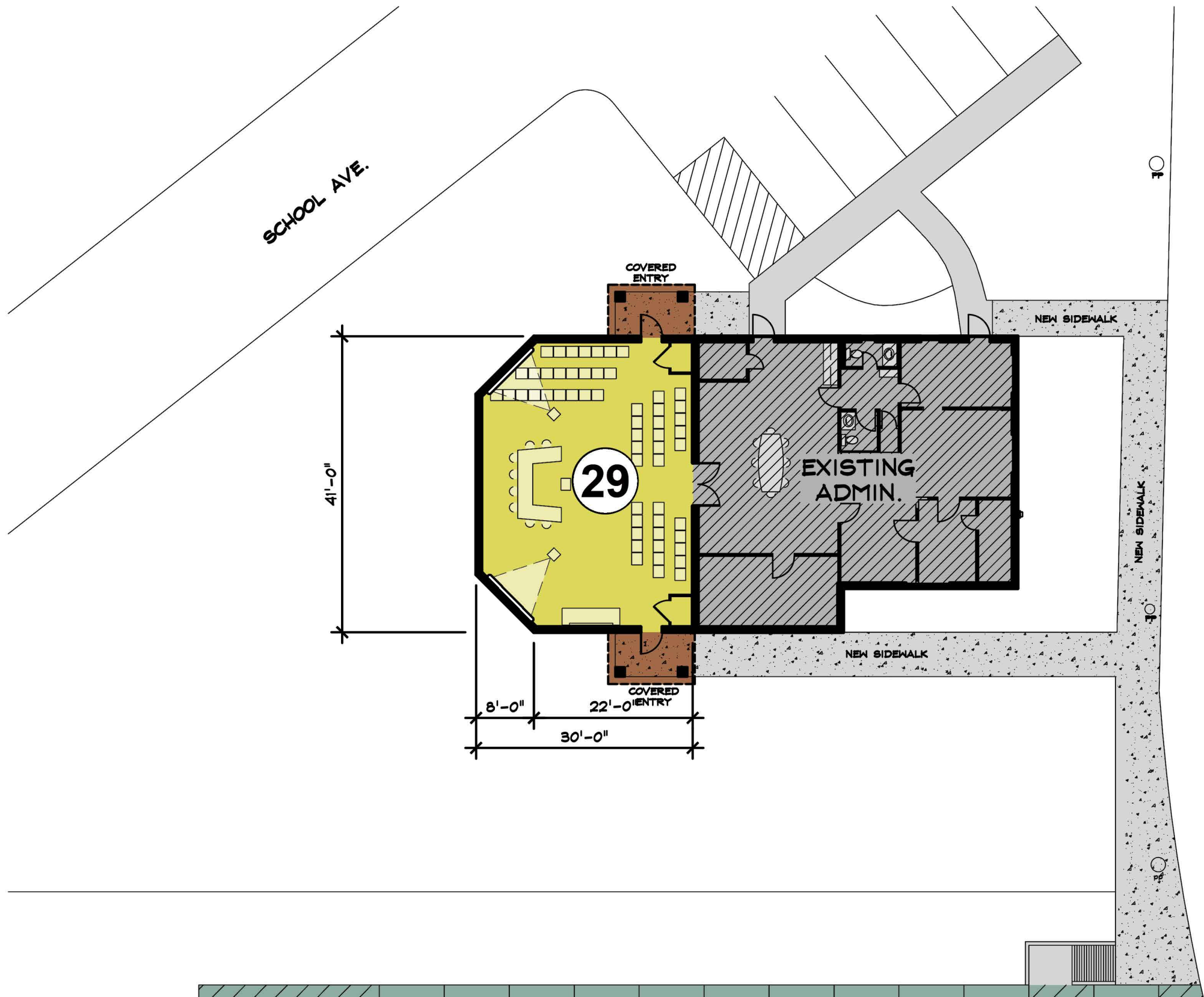


SCOPE OF WORK:

- * SQUARE FOOTAGE: 26,300 SF
- * NEW ASPHALT PARKING FOR 66 CARS
- * NEW CURBS / SIDEWALKS
- * NEW H.C. RAMPS AS REQUIRED
- * BUS DROP-OFF

25 BASEBALL FIELD PARKING LOT
SCALE: N.T.S.





- SCOPE OF WORK:**
- * SQUARE FOOTAGE ADDITION: 1,166 SF
 - * REMODEL EXISTING ADMIN BUILDING
 - * NEW SIDEWALK
 - * NEW COVERED ENTRY

29 CENTRAL ADMINISTRATION OFFICE EXPANSION
 SCALE: 1/16"=1'-0"

