



Corvallis

SCHOOL DISTRICT

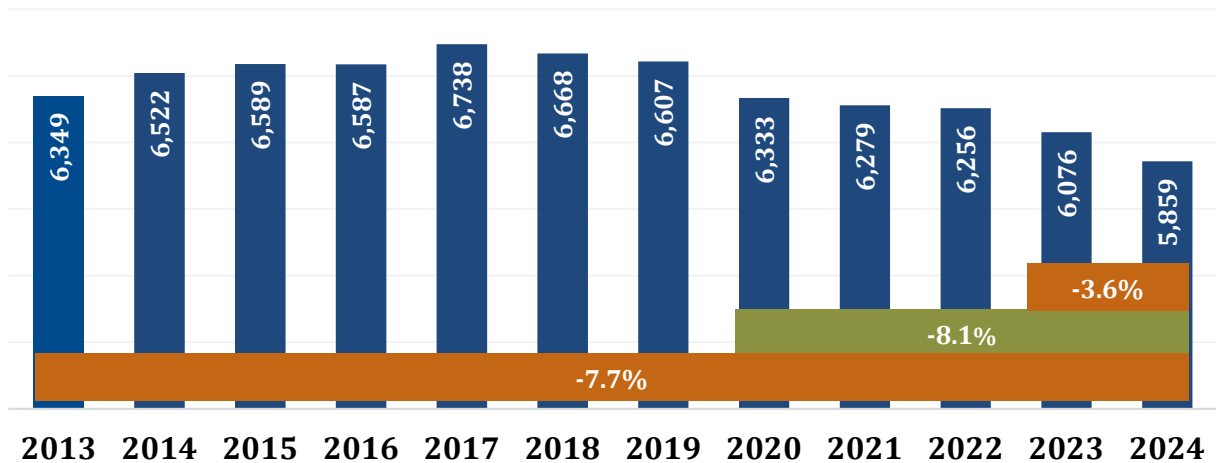
Prepared for: Corvallis School Board
Prepared by: Lauren Wolfe, Finance Director
Meeting Date: October 10, 2024

Enrollment Update

NO ACTION REQUIRED

The fall enrollment update is a representation of the preliminary number of K-12 students enrolled on the first school day in October each year. On October 1, 2024 a total of 5,859 students were enrolled in the district's schools and programs.

2024 Total Enrollment



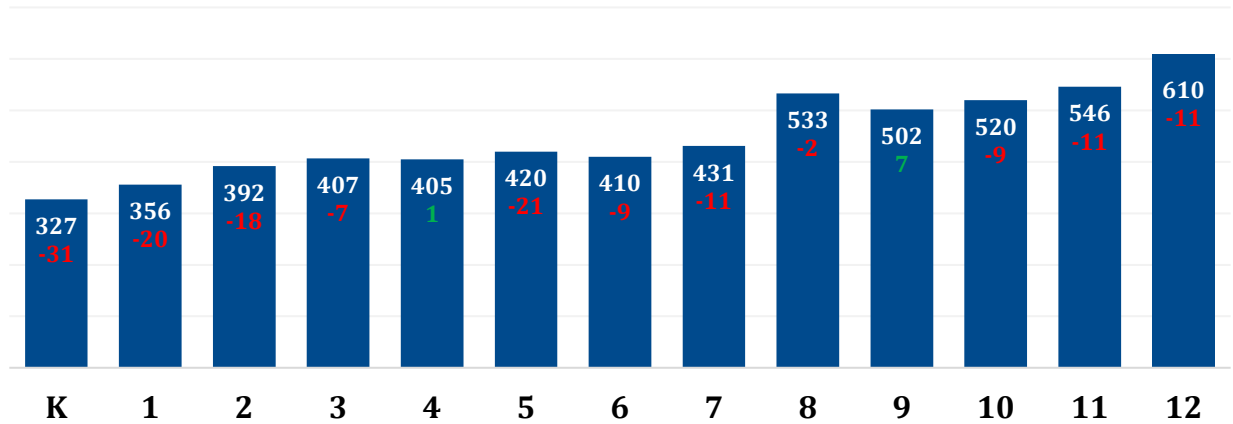
Compared to last year, total enrollment has decreased by 217 students or 3.6%, which is primarily due to declining birth rates and students moving out of the district boundaries. Compared to five years ago, total enrollment has decreased by 474 students or 8.1%. Compared to ten years ago, total enrollment has decreased by 490 students or 7.7%.

Actual vs. Projected

The total enrollment of 5,859 students is 142 students less than what was projected for this year. Actual elementary enrollment is lower than projected by 96 students, while actual secondary enrollment is lower than projected by 46 students.

2024 Total Enrollment by Grade

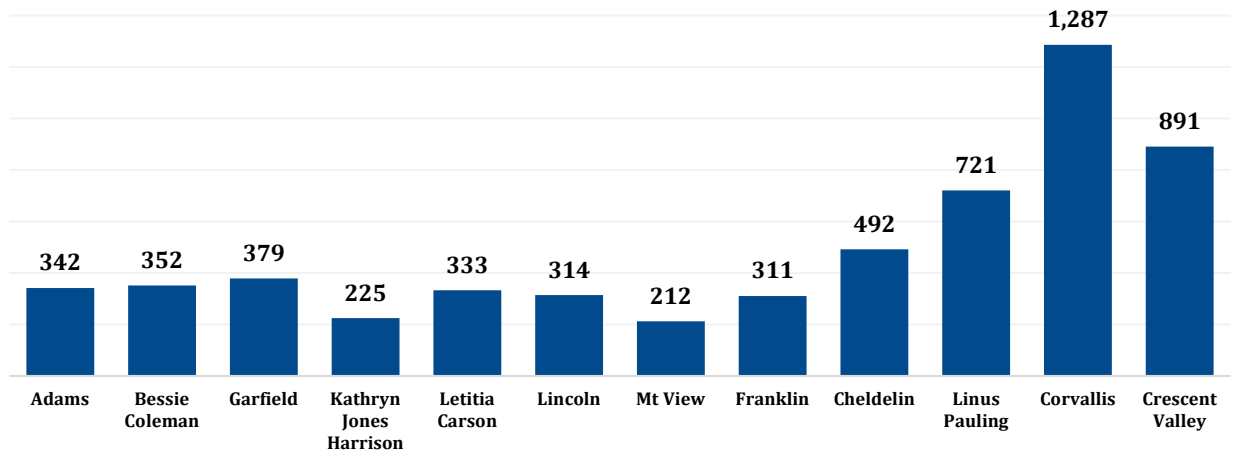
Actual vs. Projected



School Enrollment

The average elementary school enrollment is 308 with a low of 212 (Mt View) and a high of 379 (Garfield). Middle school enrollment varies significantly between Cheldelin and Linus Pauling by a difference of 229 students (68%). High school enrollment also varies significantly between Corvallis High School and Crescent Valley High School by a difference of 396 students (69%).

2024 Total Enrollment by School



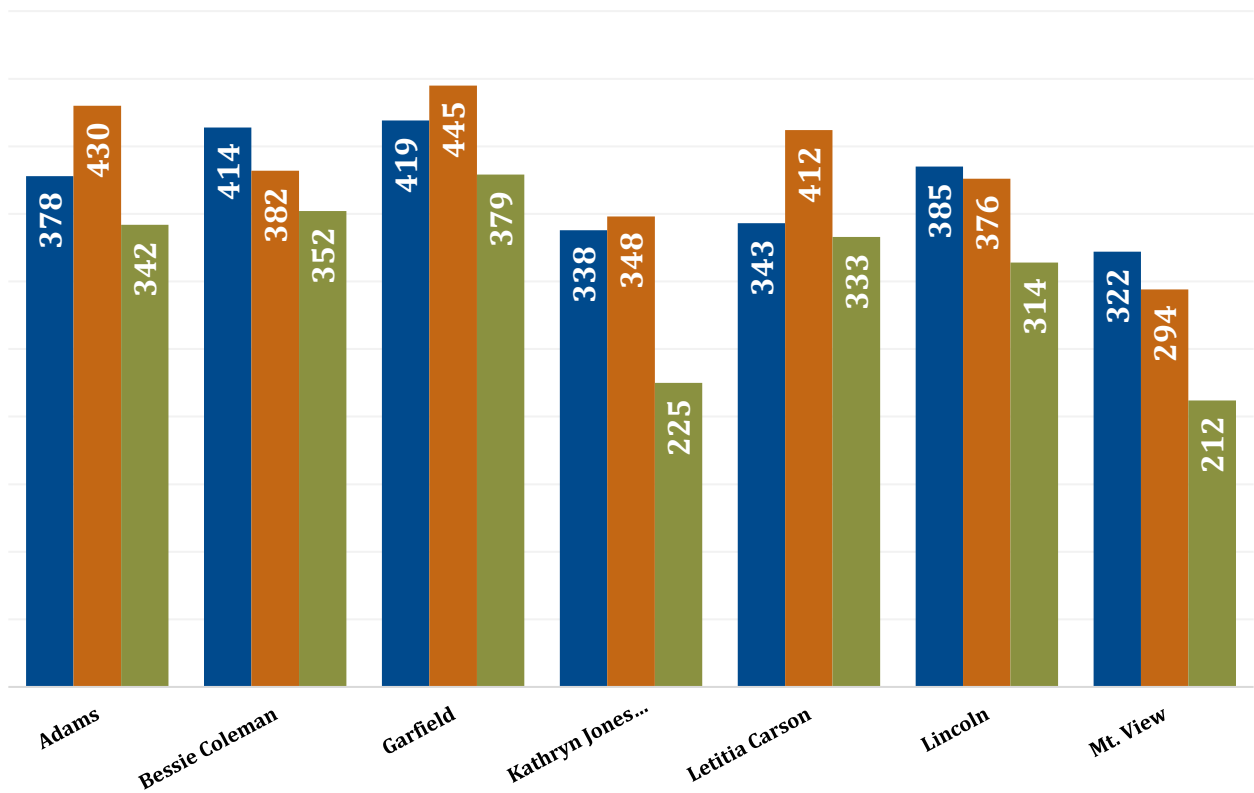
School Enrollment History

All schools, with the exception of Corvallis High School, have experienced enrollment fluctuations of more than 10% compared to five or ten years ago (as noted below in bold).

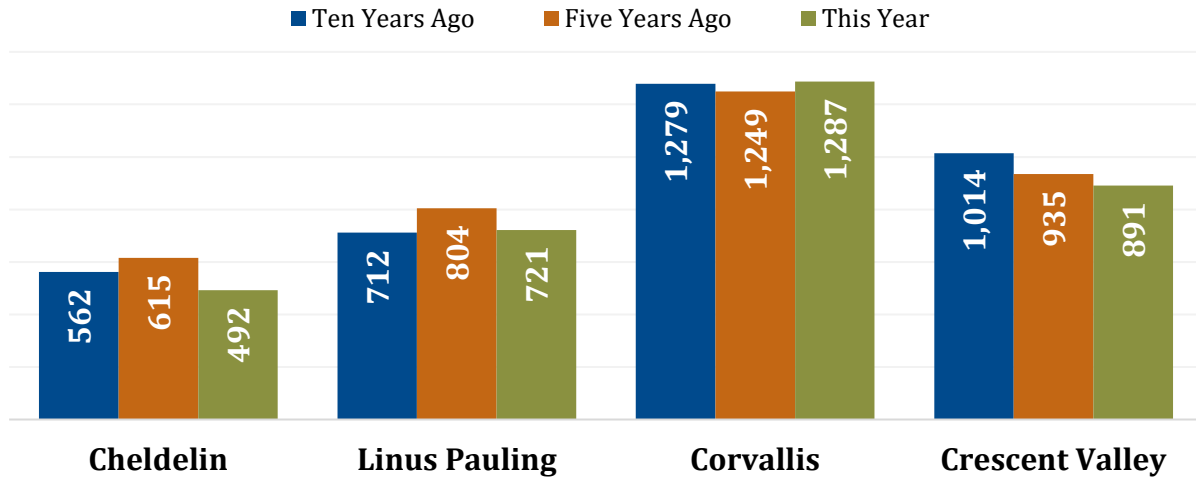
	10 Year Change	5 Year Change
Adams	-10.5%	-20.5%
Bessie Coleman	-17.6%	-7.9%
Garfield	-10.6%	-14.8%
Kathryn Jones Harrison	-50.2%	-35.3%
Letitia Carson	-3.0%	-19.2%
Lincoln	-22.6%	-16.5%
Mt. View	-51.9%	-27.9%
Franklin	-14.5%	1.9%
Cheldelin	-14.2%	-20.0%
Linus Pauling	-1.2%	-10.3%
Corvallis	-0.6%	-3.0%
Crescent Valley	-10.2%	-11.3%

Total Elementary Enrollment

■ Ten Years Ago ■ Five Years Ago ■ This Year



Total Secondary Enrollment



Student-Teacher Ratios

The average student-teacher ratio for 2024 at district elementary schools is 23, while the average student-teacher ratio at district secondary schools is 25.

	Student Enrollment	Classroom Teachers (FTE)	Student-Teacher Ratio
Adams Elementary	342	14.00	24
Bessie Coleman Elementary	352	15.00	23
Garfield Elementary	379	16.00	24
Kathryn Jones Harrison Elementary	225	11.00	20
Letitia Carson Elementary	333	14.00	24
Lincoln Elementary	314	15.00	21
Mt. View Elementary	212	9.00	24
Franklin K-8	311	12.75	24
Cheldelin Middle School	492	22.20	22
Linus Pauling Middle School	721	31.20	23
Corvallis High School	1,189	46.00	26
Crescent Valley High School	837	30.50	27
College Hill High School	152	5.50	28
TOTAL	5,859	242.15	24