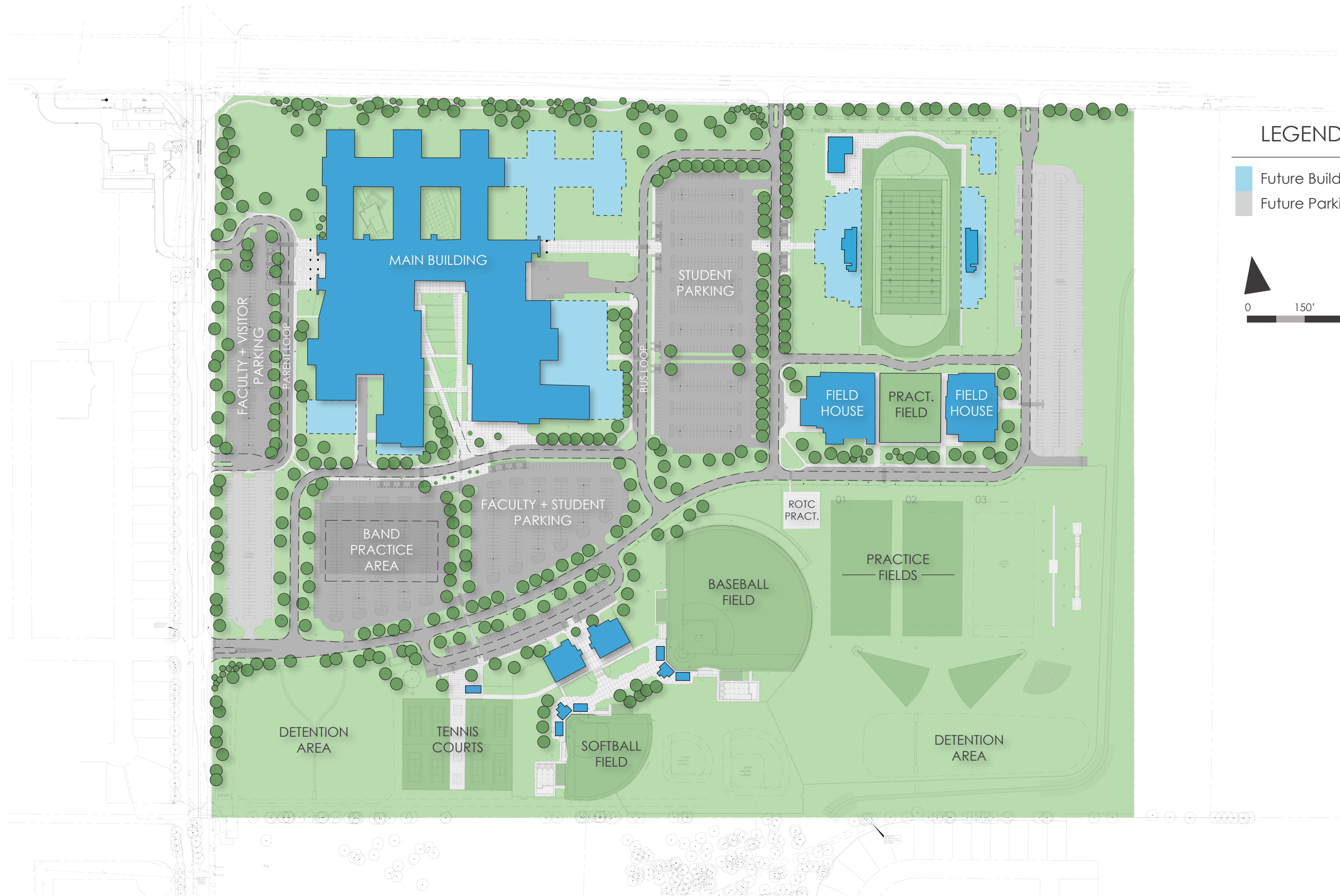




# COMPREHENSIVE HIGH SCHOOL #4

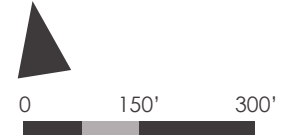
DESIGN UPDATE. MAY 13, 2014

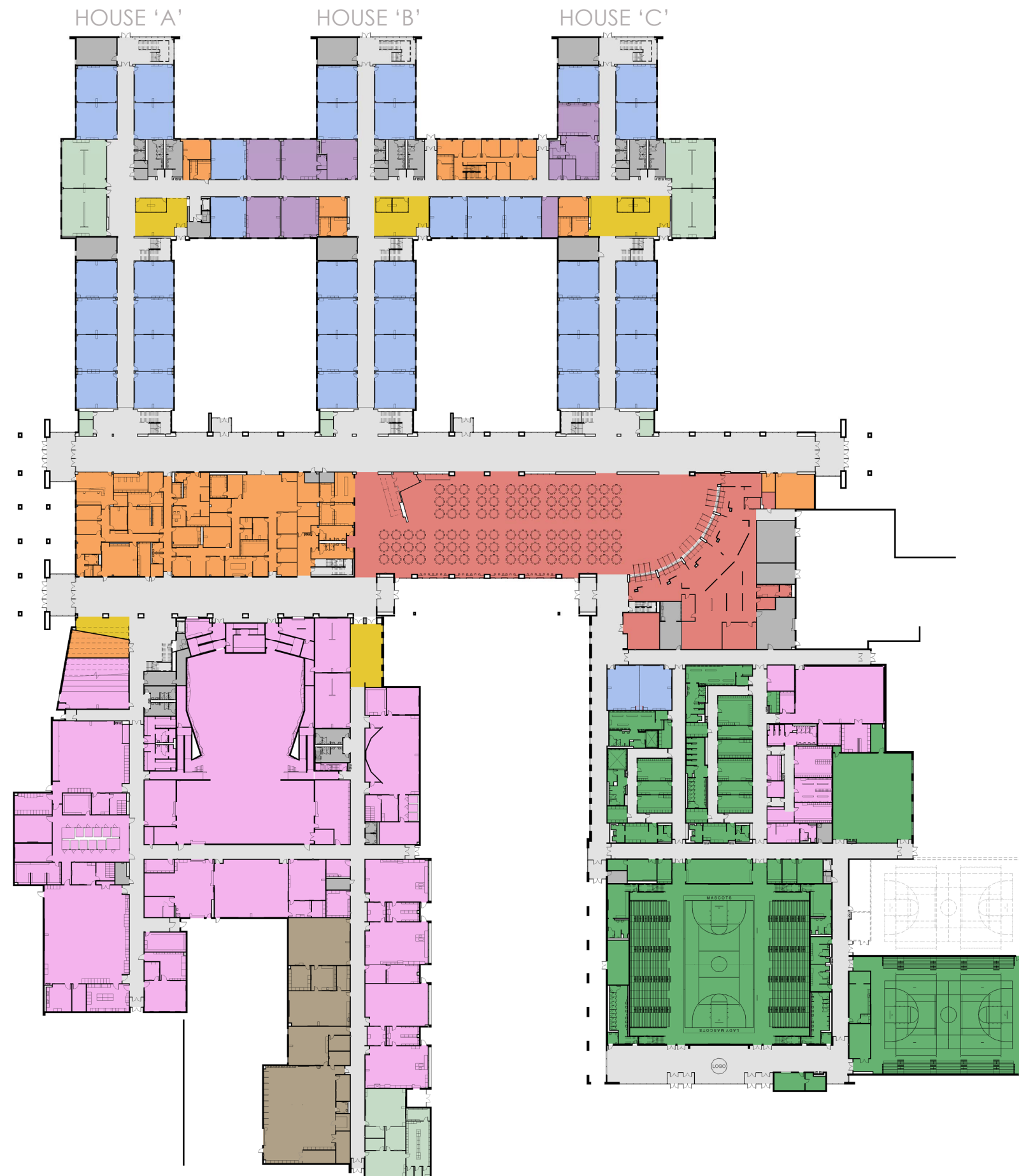




LEGEND

- Future Building
- Future Parking





LEGEND

- Classroom
- Collaborative Area
- Science Lab
- Special Education
- Technology
- Library
- Athletics
- Administration
- Fine Arts
- Agricultural Science
- Food Services
- Service
- Circulation

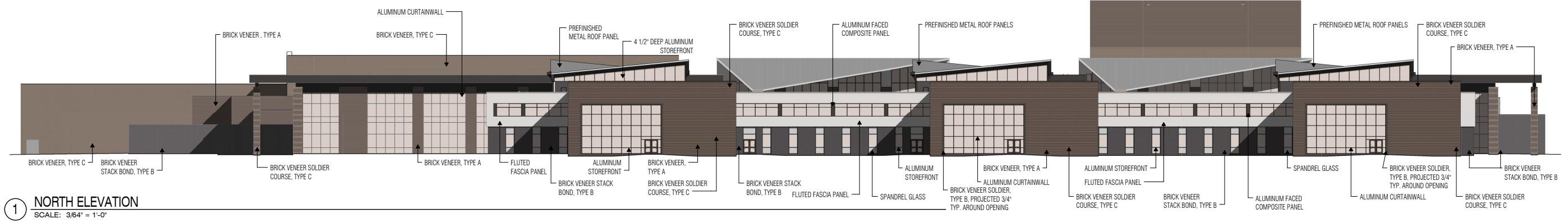




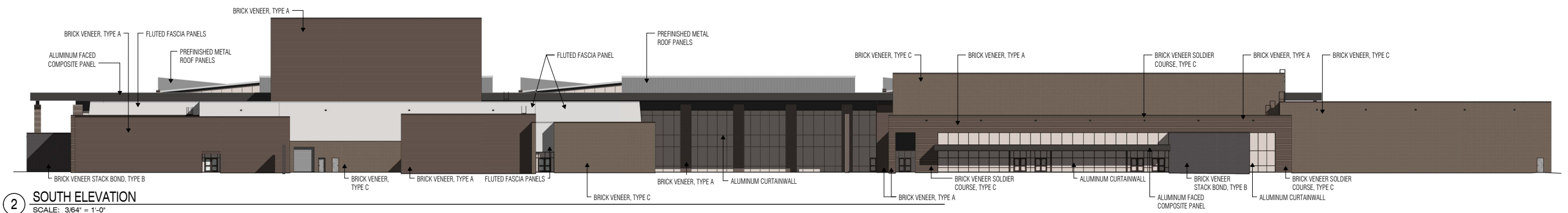
LEGEND

- Classroom
- Collaborative Area
- Science Lab
- Special Education
- Technology
- Library
- Athletics
- Administration
- Fine Arts
- Agricultural Science
- Food Services
- Service
- Circulation

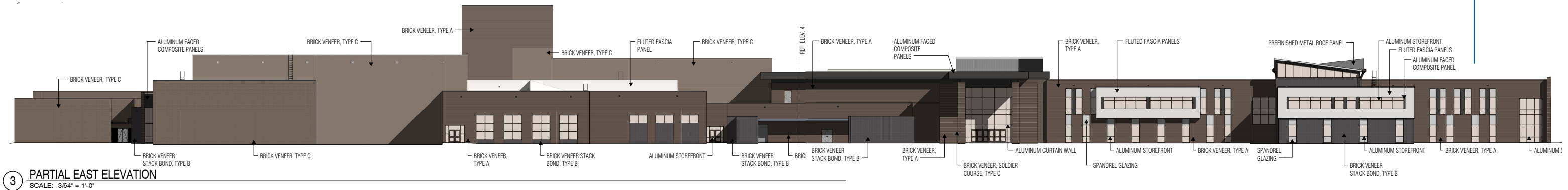




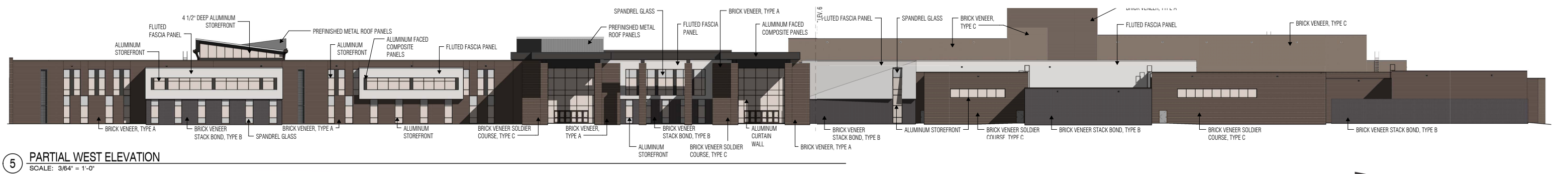
1 NORTH ELEVATION  
SCALE: 3/64" = 1'-0"



2 SOUTH ELEVATION  
SCALE: 3/64" = 1'-0"



3 PARTIAL EAST ELEVATION  
SCALE: 3/64" = 1'-0"



5 PARTIAL WEST ELEVATION  
SCALE: 3/64" = 1'-0"

EXTERIOR ELEVATIONS





FRONT ENTRANCE





STUDENT ENTRANCE











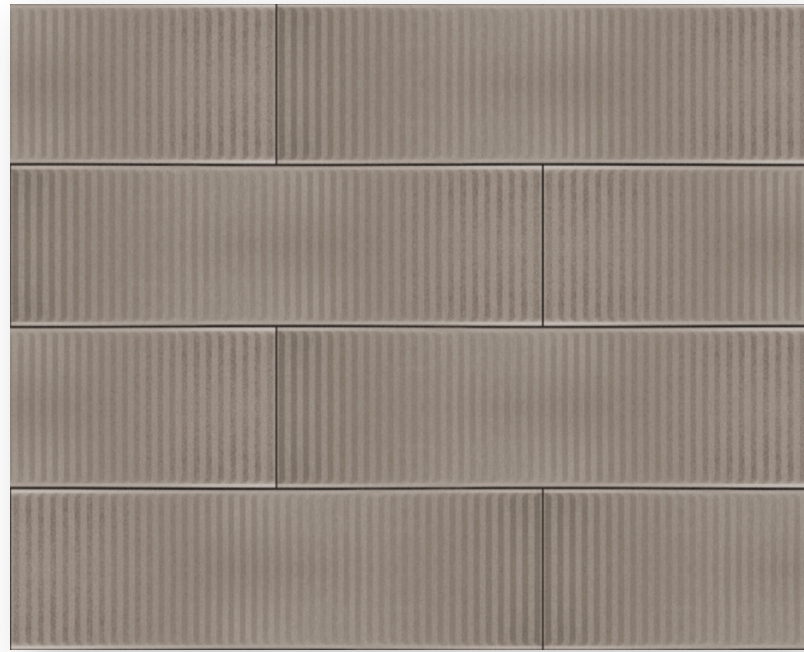
CIRCULATION CORRIDOR



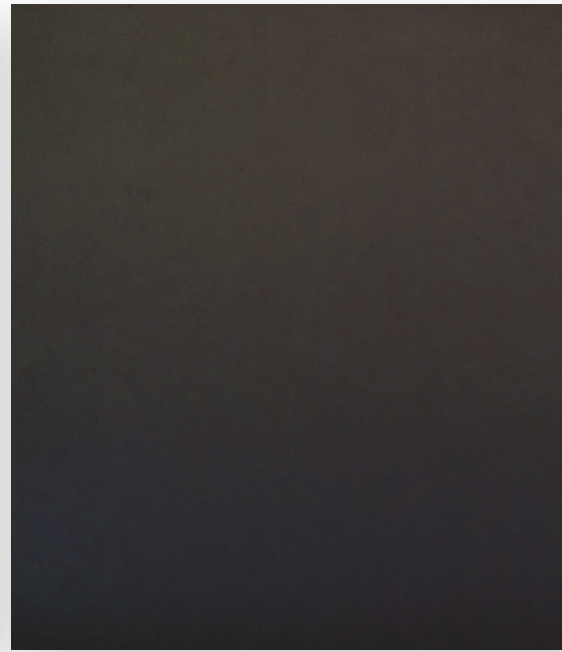


METALS

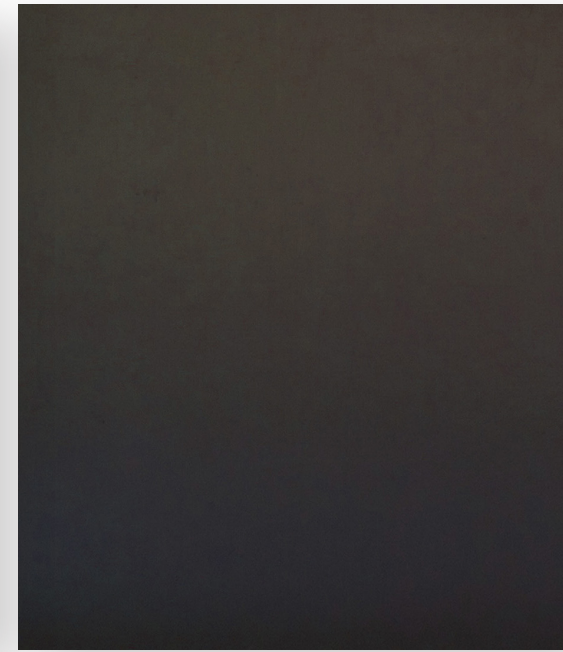
Fluted Fascia Panels: Champagne



Storefront/CW: Bronze Anodized



Standing Seam Roof: Dark Bronze



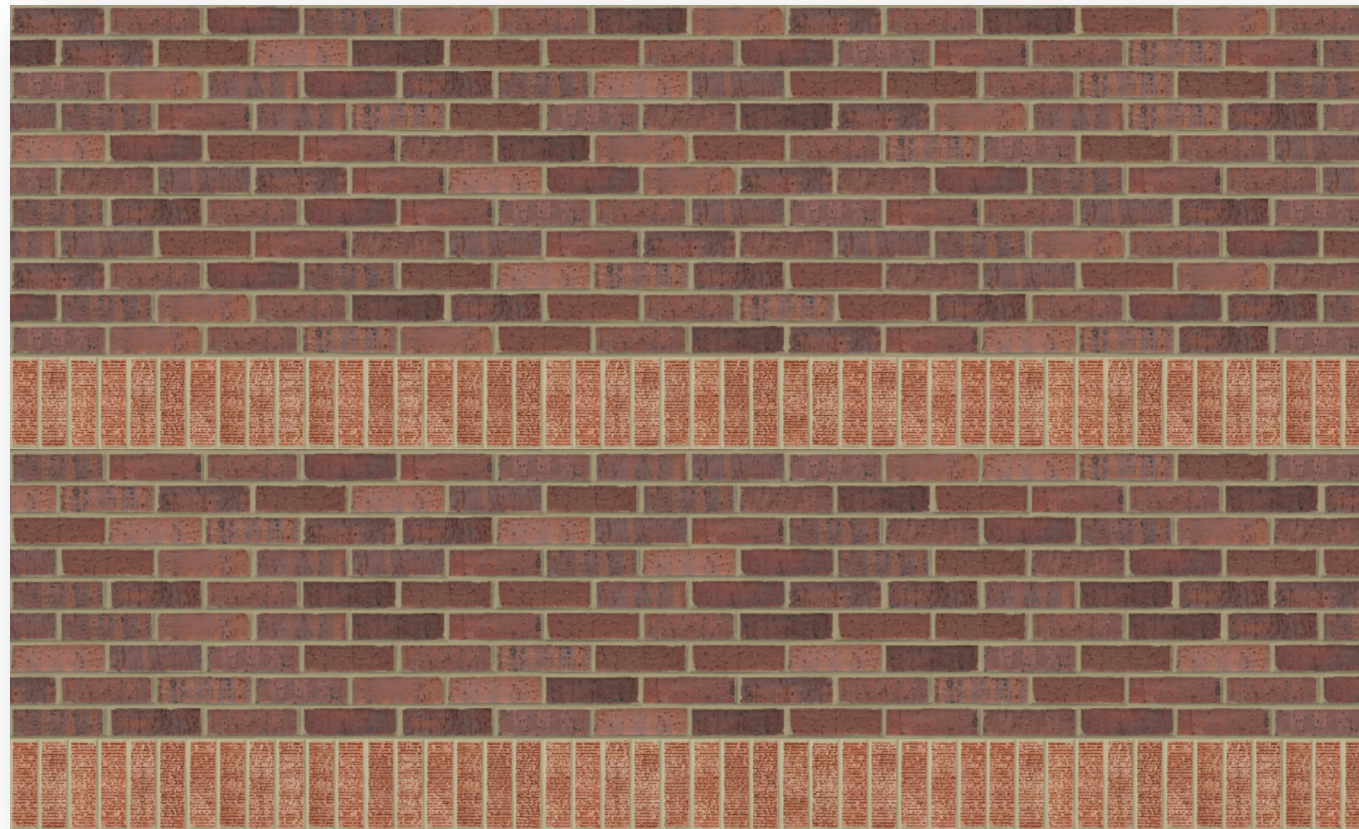
Aluminum Panel: Anodic Dark Bronze



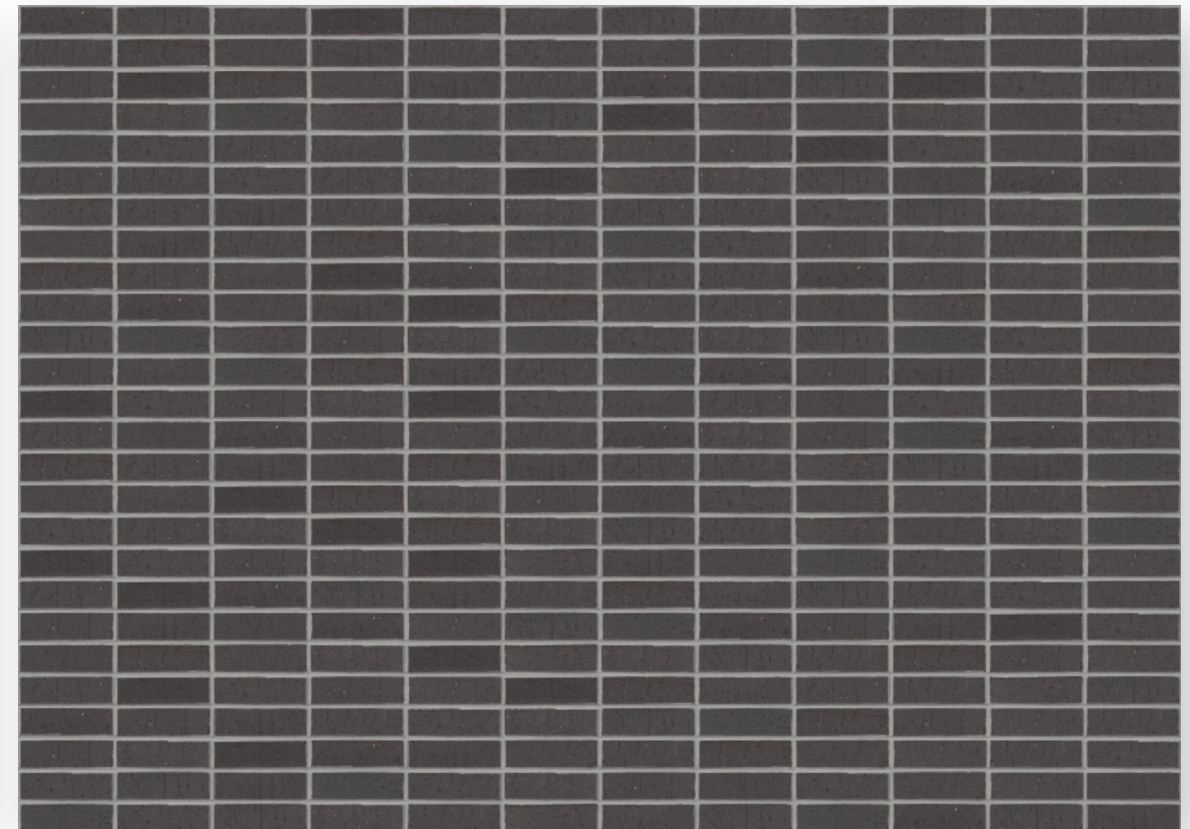
EXTERIOR FINISHES

MASONRY

Brick Veneer A:  
Cranberry Flash Velour Running with Burnt Pumpkin Soldier



Brick Veneer B:  
Westchester Stack Bond

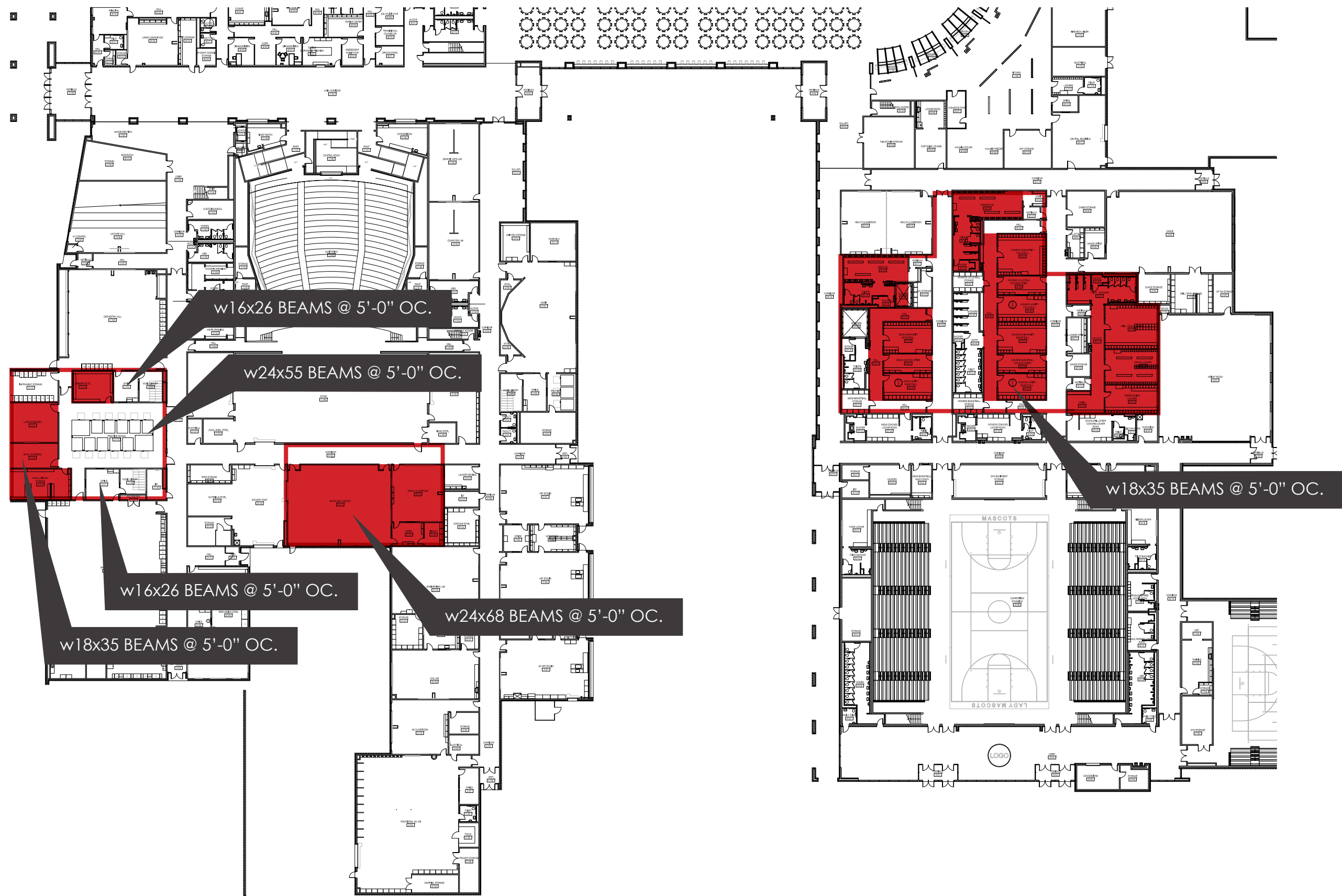


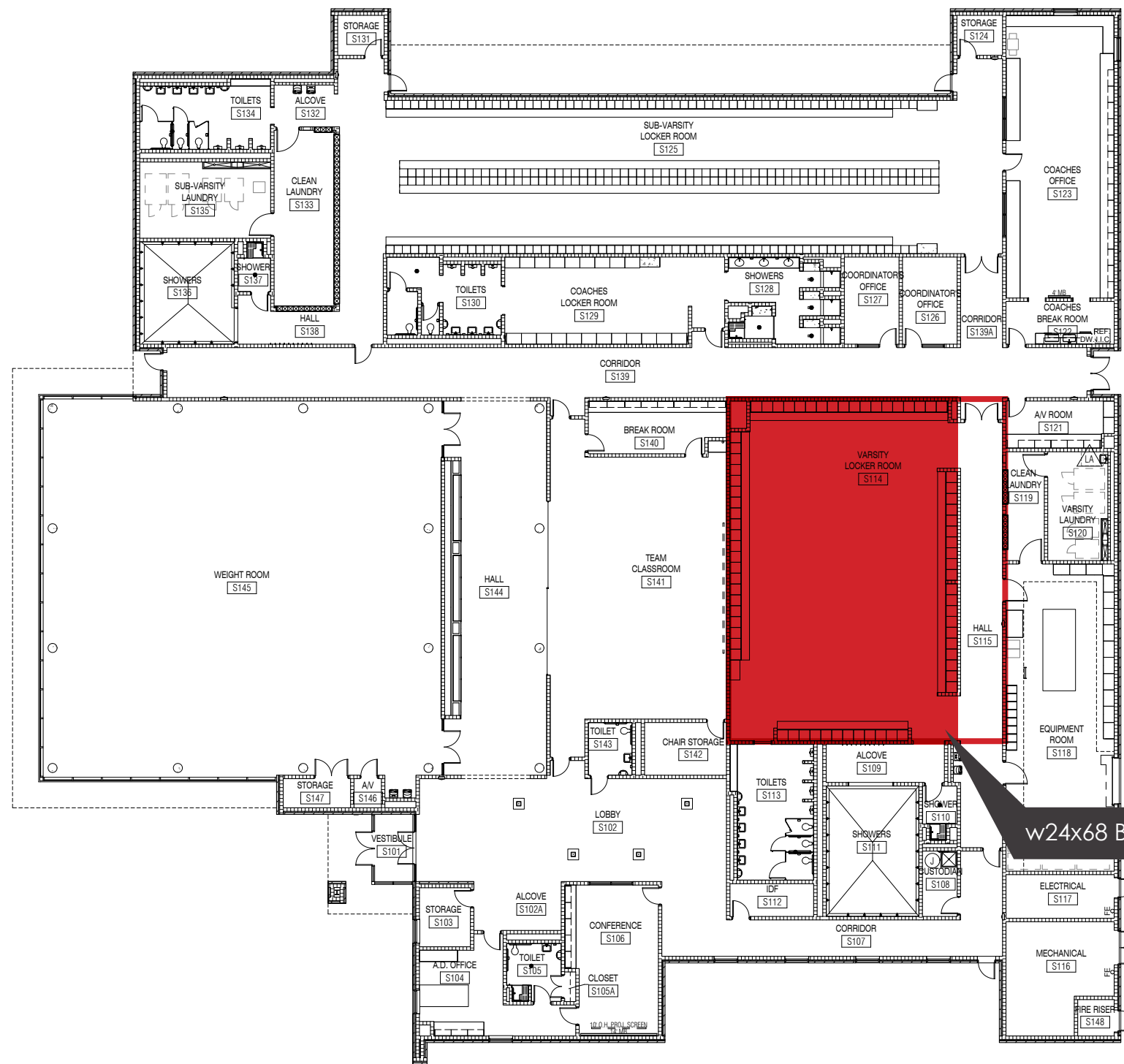


W21x44 BEAMS @ 5'-0" OC.

W18x35 BEAMS @ 5'-0" OC. ONE ROW OF COLUMNS WOULD BE REQUIRED TO SPLIT THE HARDENED ROOM IN HALF







**SPECIFICATIONS OF HARDENED ROOMS**

Load bearing, fully grouted CMU walls with additional reinforcing support thickened concrete floor / roof.

Total area of Hardened Structure = **58,000 SF**

Total capacity of Hardened Rooms = **2800 people**



# COMPREHENSIVE HIGH SCHOOL #4

DESIGN UPDATE. MAY 13, 2014

