



Minidoka County School District

2007–2008 Spring Data Review

Idaho Standards Achievement Test

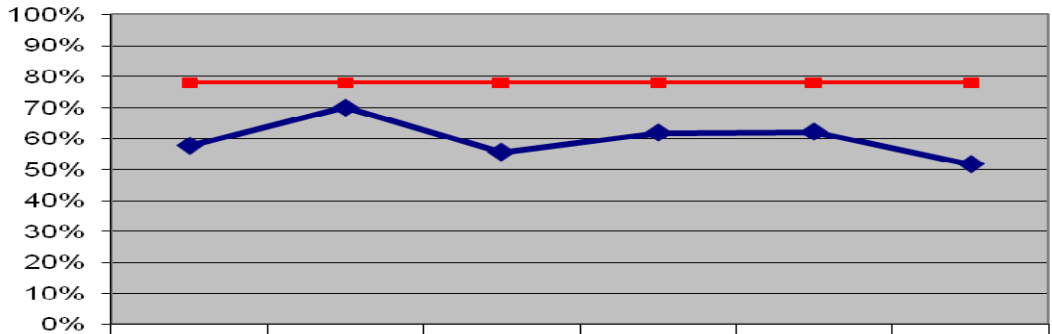
| | | | | | | | | | |
|--|-------------|-------------|-------------|-------------|-------------|-------------|-------------|-------------|---------------------------------|
| District Reading Scale Score (RIT) Averages | Spring 2001 | Spring 2002 | Spring 2003 | Spring 2004 | Spring 2005 | Spring 2006 | Spring 2007 | Spring 2008 | '07 Performance compared to '08 |
| 2nd Grade | | 184.3 | 186.1 | 186.5 | 188.3 | 189.8 | | | |
| 3rd Grade | 196.1 | 194.8 | 192.8 | 199 | 198.8 | 198.6 | 199 | 199 | 0 |
| 4th Grade | | 201.5 | 204.1 | 204.4 | 206.2 | 205.7 | 206 | 206 | 0 |
| 5th Grade | 205.6 | 207.4 | 208.4 | 209.7 | 209.4 | 212.9 | 211 | 212 | 1 |
| | Spring 2001 | Spring 2002 | Spring 2003 | Spring 2004 | Spring 2005 | Spring 2006 | Spring 2007 | Spring 2008 | '07 Performance compared to '08 |
| 6th Grade | | 213.7 | 212.5 | 213.1 | 214.6 | 215.6 | 214 | 214 | 0 |
| 7th Grade | | | 216.7 | 217.1 | 218.3 | 221.4 | 217 | 220 | 3 |
| 8th Grade | | 218.1 | 219.9 | 221.5 | 223.1 | 223.6 | 224 | 225 | 1 |
| 9th Grade | | | 219 | 219.3 | 220.1 | 224.1 | 224 | | |
| 10th Grade | | | 224.6 | 226.4 | 229.1 | 228 | 223 | 226 | 3 |
| District Math Scale Score (RIT) Averages | Spring 2001 | Spring 2002 | Spring 2003 | Spring 2004 | Spring 2005 | Spring 2006 | Spring 2007 | Spring 2008 | '07 Performance compared to '08 |
| 2nd Grade | | 187.6 | | 190.7 | 192.4 | 194.4 | | | |
| 3rd Grade | | 197.6 | 200.6 | 202.5 | 200.7 | 205.7 | 201 | 201 | 0 |
| 4th Grade | | 204.9 | 210 | 210.2 | 212.3 | 212 | 209 | 209 | 0 |
| 5th Grade | 211.3 | 213.1 | 212.1 | 216.1 | 218.3 | 223.7 | 216 | 218 | 2 |
| | Spring 2001 | Spring 2002 | Spring 2003 | Spring 2004 | Spring 2005 | Spring 2006 | Spring 2007 | Spring 2008 | '07 Performance compared to '08 |
| 6th Grade | | 221.2 | 219.8 | 223.1 | 222.9 | 225.1 | 223 | 222 | -1 |
| 7th Grade | | | 225.6 | 226.6 | 226.6 | 228.8 | 226 | 229 | 3 |
| 8th Grade | | 233.4 | 228.5 | 233.2 | 232 | 233.9 | 233 | 235 | 2 |
| 9th Grade | | 232.2 | 228.7 | 230.7 | 231.6 | 232.4 | 237 | | |
| 10th Grade | | | 241.8 | 242.4 | 242.6 | 242 | 239 | 240 | 1 |
| District Language Scale Score (RIT) Averages | Spring 2001 | Spring 2002 | Spring 2003 | Spring 2004 | Spring 2005 | Spring 2006 | Spring 2007 | Spring 2008 | '07 Performance compared to '08 |
| 2nd Grade | | 185.2 | 188.9 | 189.8 | 192.5 | 192.4 | | | |
| 3rd Grade | 200.6 | 197.3 | 197.9 | 201.6 | 200 | 200.8 | 198 | 198 | 0 |
| 4th Grade | | 203 | 205.3 | 207.7 | 208 | 207.2 | 210 | 208 | -2 |
| 5th Grade | 209.3 | 210 | 210.8 | 212.8 | 213.5 | 214.2 | 212 | 213 | 1 |
| | Spring 2001 | Spring 2002 | Spring 2003 | Spring 2004 | Spring 2005 | Spring 2006 | Spring 2007 | Spring 2008 | '07 Performance compared to '08 |
| 6th Grade | | 214.5 | 214.1 | 215.4 | 217.8 | 217 | 217 | 217 | 0 |
| 7th Grade | | | 216.8 | 218 | 219.1 | 220.4 | 218 | 220 | 2 |
| 8th Grade | | 220.1 | 220 | 221.3 | 222.6 | 222 | 223 | 223 | 0 |
| 9th Grade | | | 218.5 | 219.8 | 219 | 223.1 | 223 | | |
| 10th Grade | | | 223 | 226.5 | 225.4 | 224.2 | 225 | 225 | 0 |
| District Science Scale Score (RIT) Averages | Spring 2001 | Spring 2002 | Spring 2003 | Spring 2004 | Spring 2005 | Spring 2006 | Spring 2007 | Spring 2008 | '07 Performance compared to '08 |
| 2nd Grade | | | | | | | | | |
| 3rd Grade | | | | | | | | | |
| 4th Grade | | | | | | | | | |
| 5th Grade | | | | | | | 203 | 206 | 3 |
| | Spring 2001 | Spring 2002 | Spring 2003 | Spring 2004 | Spring 2005 | Spring 2006 | Spring 2007 | Spring 2008 | '07 Performance compared to '08 |
| 6th Grade | | | | | | | | | |
| 7th Grade | | | | | | | 209 | 212 | 3 |
| 8th Grade | | | | | | | | | |
| 9th Grade | | | | | | | | | |
| 10th Grade | | | | | | | 217 | 219 | 2 |

Proficiency Cut Scores compared to District Average Scores

| READING | | |
|----------|-----------------|------------------------|
| | State Cut Score | District Average Score |
| 3rd | 192 | 199 |
| 4th | 198 | 206 |
| 5th | 204 | 212 |
| 6th | 208 | 214 |
| 7th | 212 | 220 |
| 8th | 214 | 225 |
| 10th | 220 | 226 |
| MATH | | |
| | State Cut Score | District Average Score |
| 3rd | 190 | 201 |
| 4th | 201 | 209 |
| 5th | 211 | 218 |
| 6th | 218 | 222 |
| 7th | 223 | 229 |
| 8th | 229 | 235 |
| 10th | 239 | 240 |
| LANGUAGE | | |
| | State Cut Score | District Average Score |
| 3rd | 196 | 198 |
| 4th | 203 | 208 |
| 5th | 209 | 213 |
| 6th | 214 | 217 |
| 7th | 218 | 220 |
| 8th | 221 | 223 |
| 10th | 226 | 225 |
| SCIENCE | | |
| | State Cut Score | District Average Score |
| 3rd | | |
| 4th | | |
| 5th | 206 | 206 |
| 6th | | |
| 7th | 213 | 212 |
| 8th | | |
| 10th | 219 | 219 |

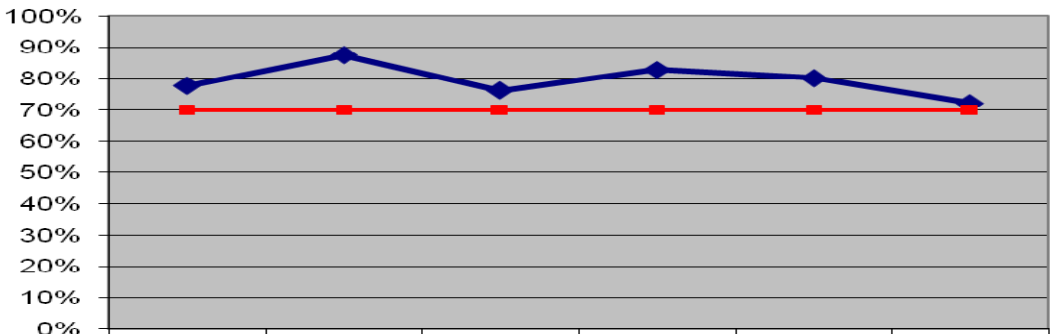
3rd Grade Performance

**Comparison of Percent Proficient and Advanced versus Spring Goal on Spring ISAT 2008
3rd Grade Language - District**



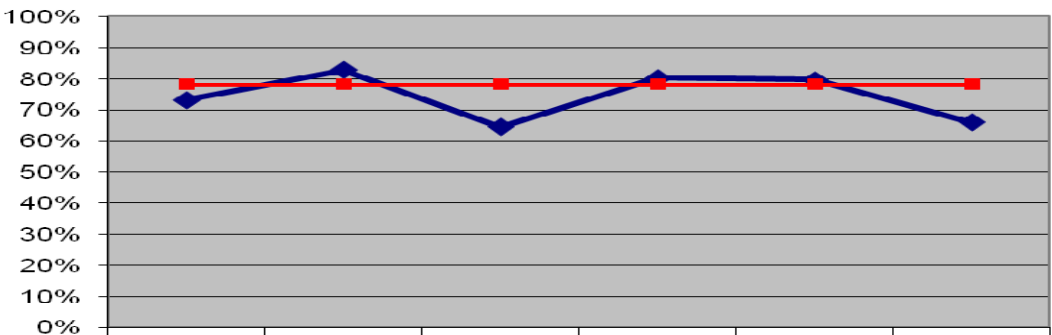
| | District | State | Acequia | Heyburn | Paul | Rupert |
|-------------------------|----------|-------|---------|---------|------|--------|
| Proficient & Above SP08 | 58% | 70% | 56% | 62% | 62% | 52% |
| Goal | 78% | 78% | 78% | 78% | 78% | 78% |

**Comparison of Percent Proficient and Advanced versus Spring Goal on Spring ISAT 2008
3rd Grade Math - District**



| | District | State | Acequia | Heyburn | Paul | Rupert |
|-------------------------|----------|-------|---------|---------|------|--------|
| Proficient & Above SP08 | 78% | 88% | 76% | 83% | 80% | 72% |
| Goal | 70% | 70% | 70% | 70% | 70% | 70% |

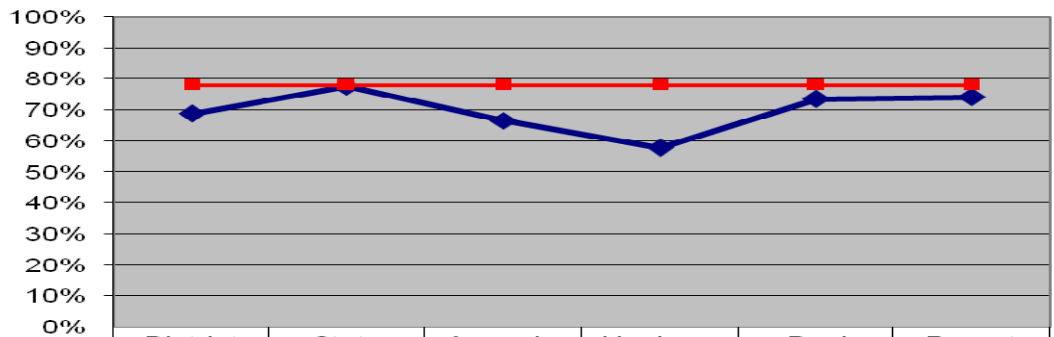
**Comparison of Percent Proficient and Advanced versus Spring Goal on Spring ISAT 2008
3rd Grade Reading - District**



| | District | State | Acequia | Heyburn | Paul | Rupert |
|-------------------------|----------|-------|---------|---------|------|--------|
| Proficient & Above SP08 | 73% | 83% | 65% | 80% | 80% | 66% |
| Goal | 78% | 78% | 78% | 78% | 78% | 78% |

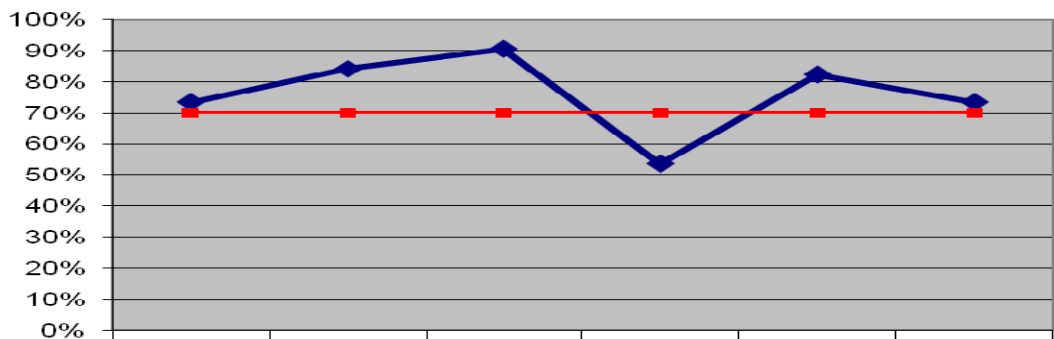
4th Grade Performance

**Comparison of Percent Proficient and Advanced versus Spring Goal on Spring ISAT 2008
4th Grade Language - District**



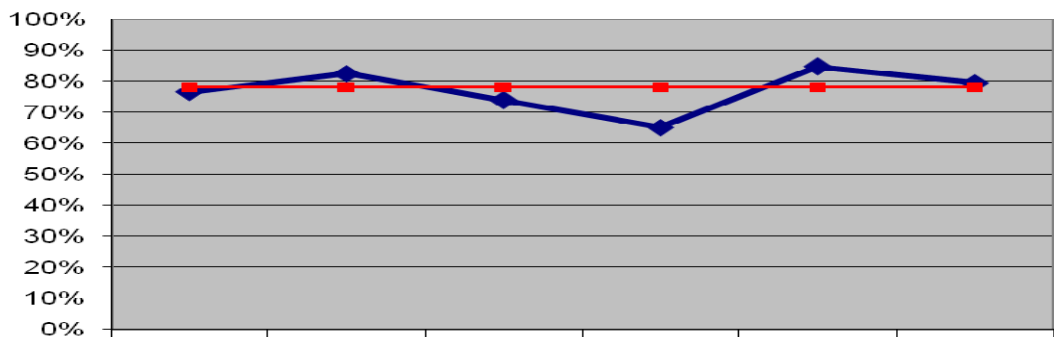
| | District | State | Acequia | Heyburn | Paul | Rupert |
|-------------------------|----------|-------|---------|---------|------|--------|
| Proficient & Above SP08 | 69% | 78% | 67% | 58% | 74% | 74% |
| Goal | 78% | 78% | 78% | 78% | 78% | 78% |

**Comparison of Percent Proficient and Advanced versus Spring Goal on Spring ISAT 2008
4th Grade Math - District**



| | District | State | Acequia | Heyburn | Paul | Rupert |
|-------------------------|----------|-------|---------|---------|------|--------|
| Proficient & Above SP08 | 73% | 84% | 91% | 54% | 82% | 73% |
| Goal | 70% | 70% | 70% | 70% | 70% | 70% |

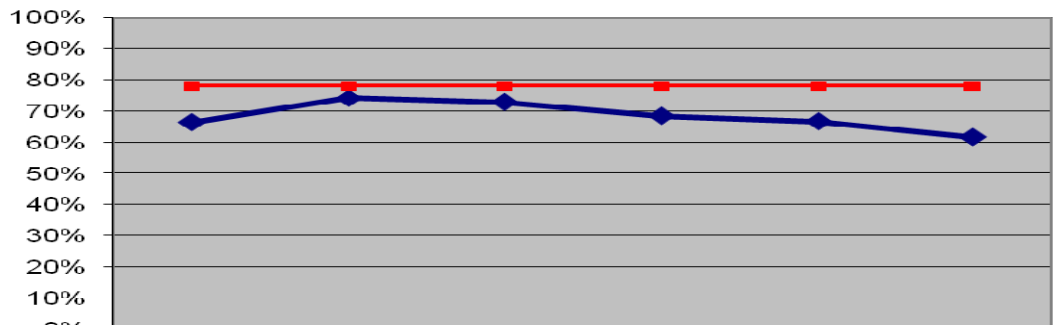
**Comparison of Percent Proficient and Advanced versus Spring Goal on Spring ISAT 2008
4th Grade Reading - District**



| | District | State | Acequia | Heyburn | Paul | Rupert |
|-------------------------|----------|-------|---------|---------|------|--------|
| Proficient & Above SP08 | 76% | 83% | 74% | 65% | 85% | 80% |
| Goal | 78% | 78% | 78% | 78% | 78% | 78% |

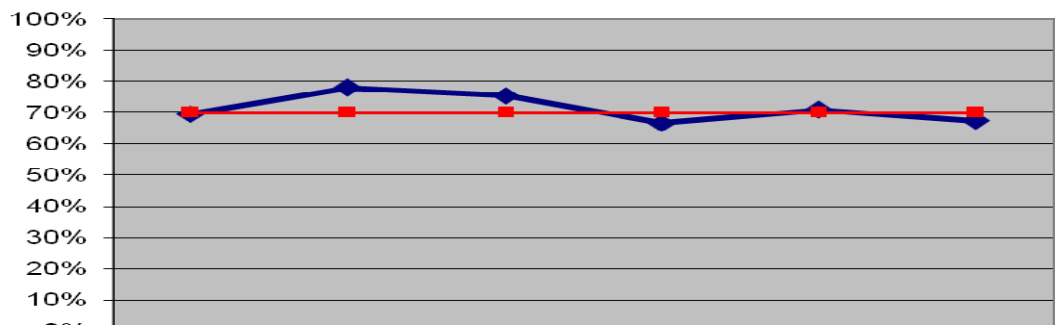
5th Grade Performance

**Comparison of Percent Proficient and Advanced versus Spring Goal on Spring ISAT 2008
5th Grade Language - District**



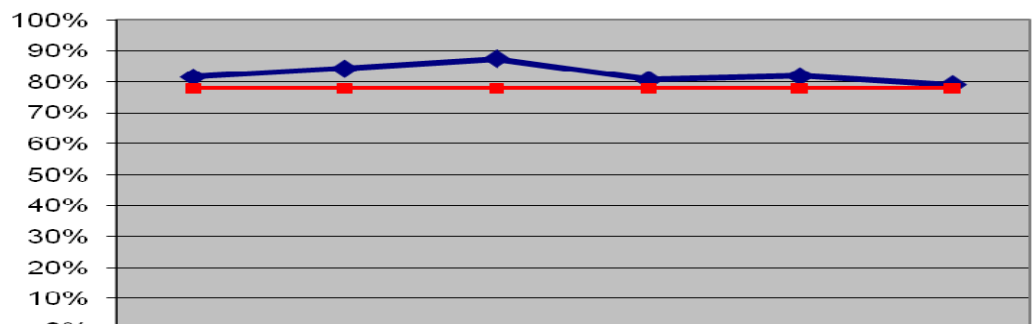
| | District | State | Acequia | Heyburn | Paul | Rupert |
|-------------------------|----------|-------|---------|---------|------|--------|
| Proficient & Above SP08 | 66% | 74% | 73% | 68% | 67% | 62% |
| Goal | 78% | 78% | 78% | 78% | 78% | 78% |

**Comparison of Percent Proficient and Advanced versus Spring Goal on Spring ISAT 2008
5th Grade Math - District**



| | District | State | Acequia | Heyburn | Paul | Rupert |
|-------------------------|----------|-------|---------|---------|------|--------|
| Proficient & Above SP08 | 70% | 78% | 76% | 67% | 71% | 67% |
| Goal | 70% | 70% | 70% | 70% | 70% | 70% |

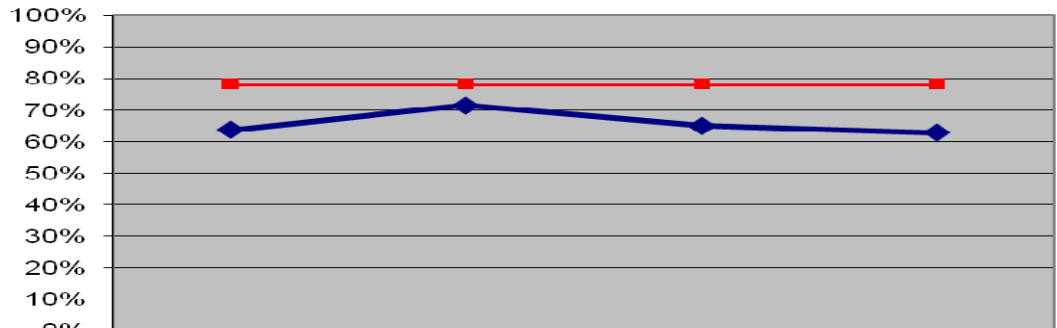
**Comparison of Percent Proficient and Advanced versus Spring Goal on Spring ISAT 2008
5th Grade Reading - District**



| | District | State | Acequia | Heyburn | Paul | Rupert |
|-------------------------|----------|-------|---------|---------|------|--------|
| Proficient & Above SP08 | 82% | 84% | 88% | 81% | 82% | 79% |
| Goal | 78% | 78% | 78% | 78% | 78% | 78% |

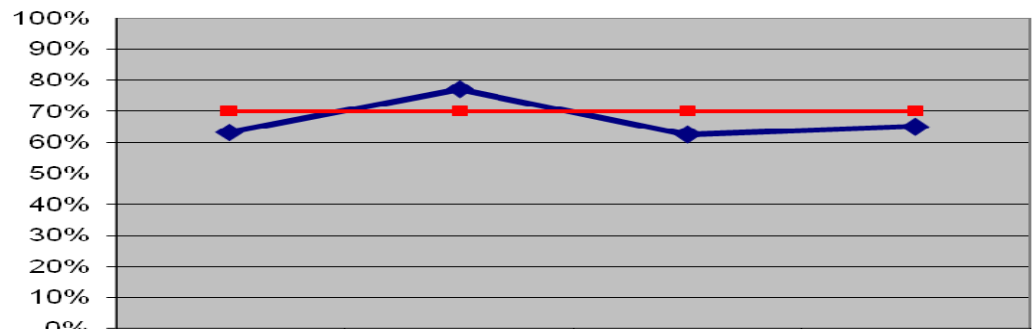
6th Grade Performance

**Comparison of Percent Proficient and Advanced versus Spring Goal on Spring ISAT 2008
6th Grade Language - District**



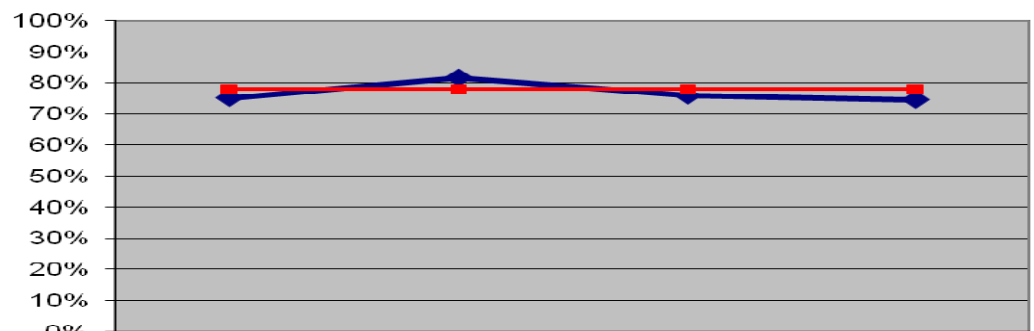
| | District | State | East | West |
|-------------------------|----------|-------|------|------|
| Proficient & Above SP08 | 64% | 71% | 65% | 63% |
| Goal | 78% | 78% | 78% | 78% |

**Comparison of Percent Proficient and Advanced versus Spring Goal on Spring ISAT 2008
6th Grade Math - District**



| | District | State | East | West |
|-------------------------|----------|-------|------|------|
| Proficient & Above SP08 | 63% | 77% | 63% | 65% |
| Goal | 70% | 70% | 70% | 70% |

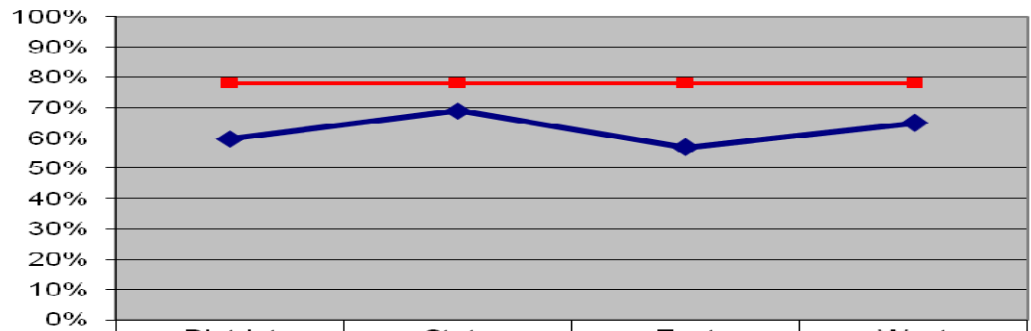
**Comparison of Percent Proficient and Advanced versus Spring Goal on Spring ISAT 2008
6th Grade Reading - District**



| | District | State | East | West |
|-------------------------|----------|-------|------|------|
| Proficient & Above SP08 | 75% | 82% | 76% | 75% |
| Goal | 78% | 78% | 78% | 78% |

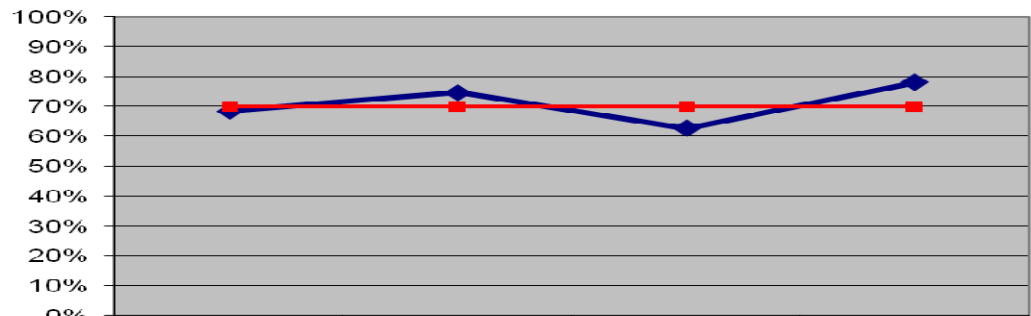
7th Grade Performance

**Comparison of Percent Proficient and Advanced versus Spring Goal on Spring ISAT 2008
7th Grade Language - District**



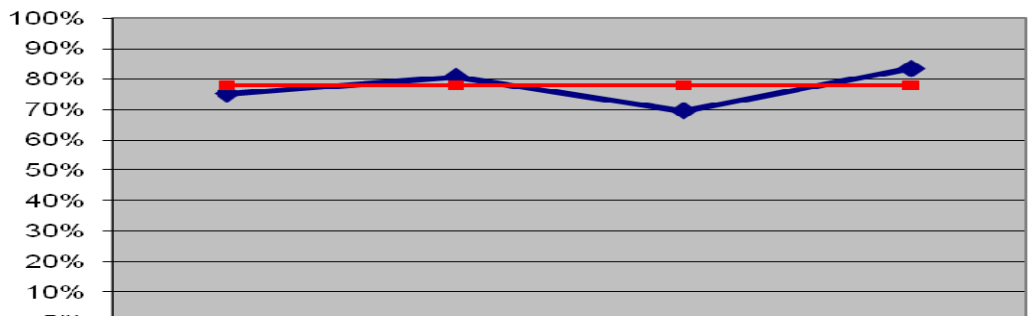
| | | | | |
|-------------------------|-----|-----|-----|-----|
| Proficient & Above SP08 | 60% | 69% | 57% | 65% |
| Goal | 78% | 78% | 78% | 78% |

**Comparison of Percent Proficient and Advanced versus Spring Goal on Spring ISAT 2008
7th Grade Math - District**



| | | | | |
|-------------------------|-----|-----|-----|-----|
| Proficient & Above SP08 | 69% | 75% | 63% | 78% |
| Goal | 70% | 70% | 70% | 70% |

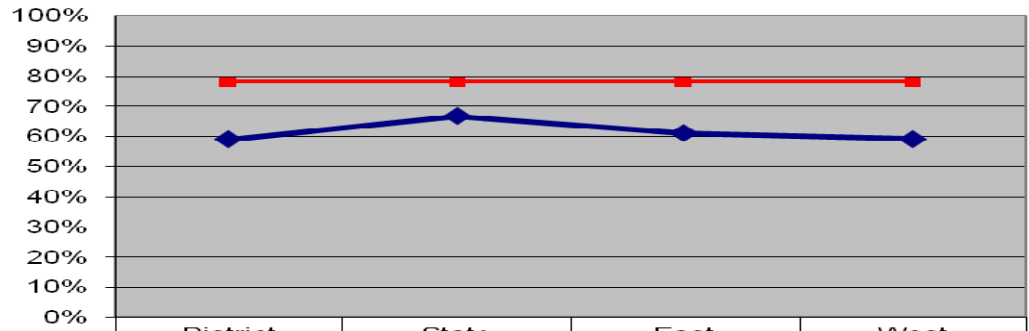
**Comparison of Percent Proficient and Advanced versus Spring Goal on Spring ISAT 2008
7th Grade Reading - District**



| | | | | |
|-------------------------|-----|-----|-----|-----|
| Proficient & Above SP08 | 75% | 81% | 70% | 84% |
| Goal | 78% | 78% | 78% | 78% |

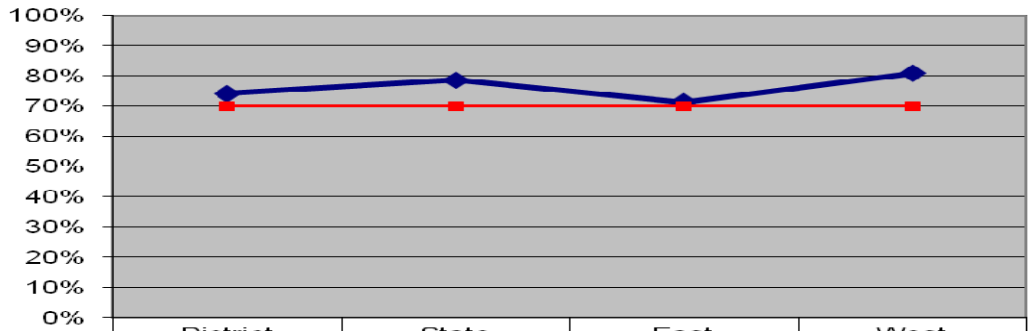
8th Grade Performance

**Comparison of Percent Proficient and Advanced versus Spring Goal on Spring ISAT 2008
8th Grade Language - District**



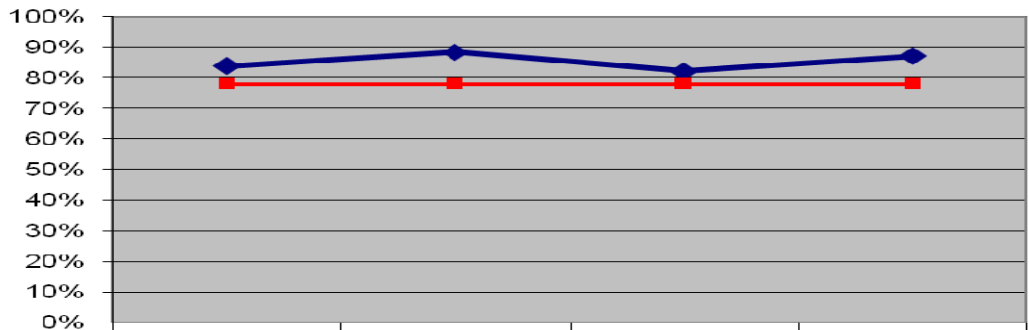
| | District | State | East | West |
|-------------------------|----------|-------|------|------|
| Proficient & Above SP08 | 59% | 67% | 61% | 59% |
| Goal | 78% | 78% | 78% | 78% |

**Comparison of Percent Proficient and Advanced versus Spring Goal on Spring ISAT 2008
8th Grade Math - District**



| | District | State | East | West |
|-------------------------|----------|-------|------|------|
| Proficient & Above SP08 | 74% | 79% | 71% | 81% |
| Goal | 70% | 70% | 70% | 70% |

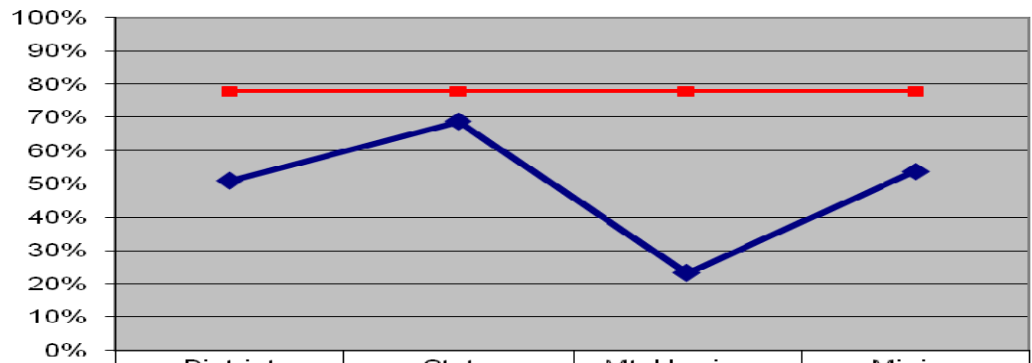
**Comparison of Percent Proficient and Advanced versus Spring Goal on Spring ISAT 2008
8th Grade Reading - District**



| | District | State | East | West |
|-------------------------|----------|-------|------|------|
| Proficient & Above SP08 | 84% | 88% | 82% | 87% |
| Goal | 78% | 78% | 78% | 78% |

10th Grade ISAT Performance

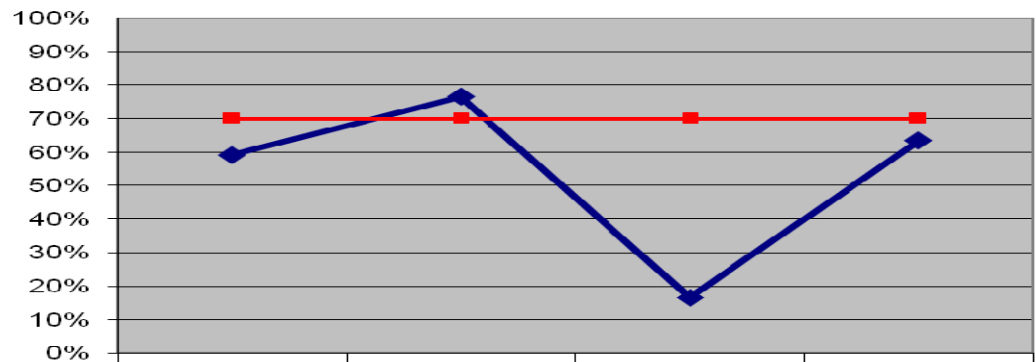
**Comparison of Percent Proficient and Advanced versus Spring Goal on Spring ISAT 2008
10th Grade Language - District**



◆ Proficient & Above SP08
■ Goal

| | District | State | Mt. Harrison | Minico |
|-------------------------|----------|-------|--------------|--------|
| Proficient & Above SP08 | 51% | 69% | 23% | 54% |
| Goal | 78% | 78% | 78% | 78% |

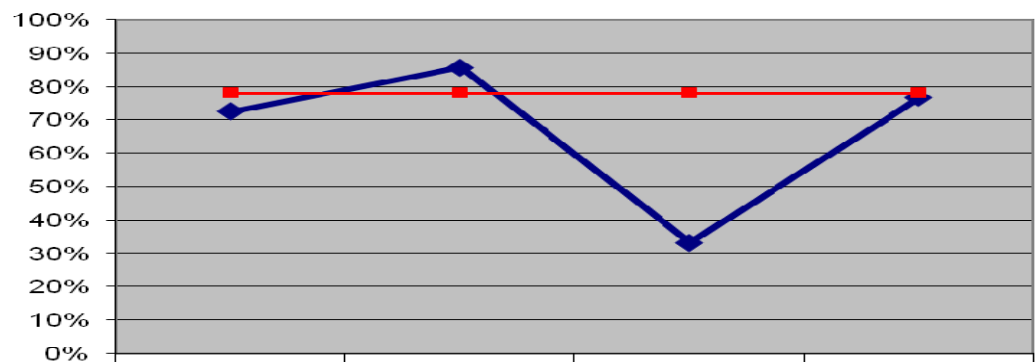
**Comparison of Percent Proficient and Advanced versus Spring Goal on Spring ISAT 2008
10th Grade Math - District**



◆ Proficient & Above SP08
■ Goal

| | District | State | Mt. Harrison | Minico |
|-------------------------|----------|-------|--------------|--------|
| Proficient & Above SP08 | 59% | 77% | 17% | 64% |
| Goal | 70% | 70% | 70% | 70% |

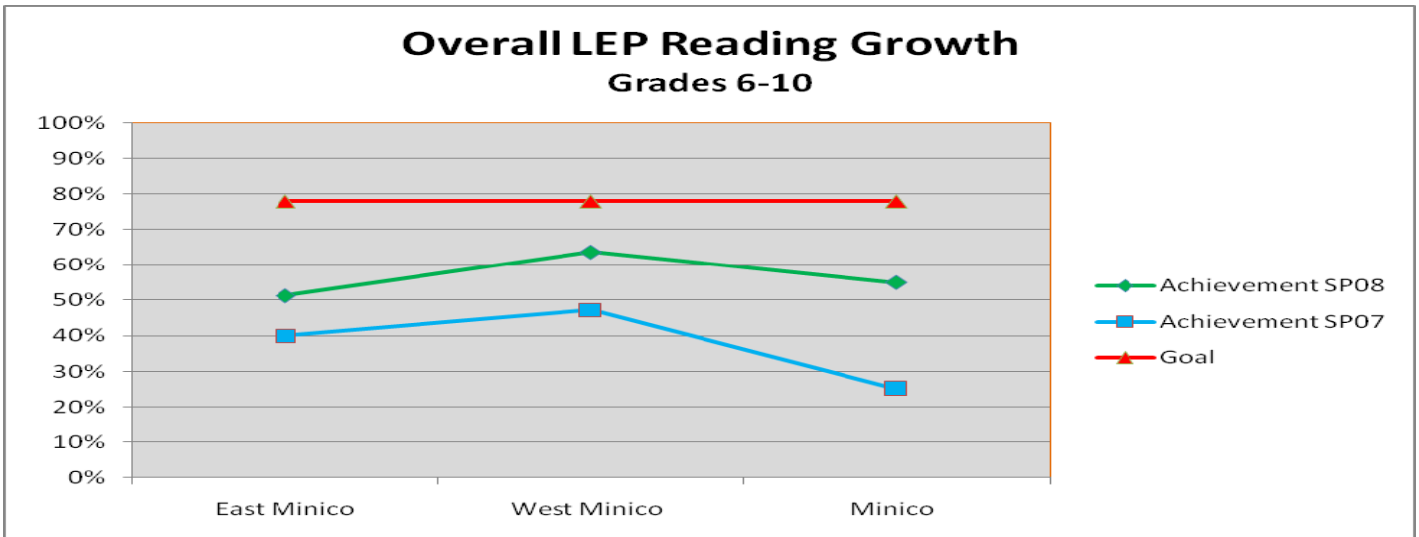
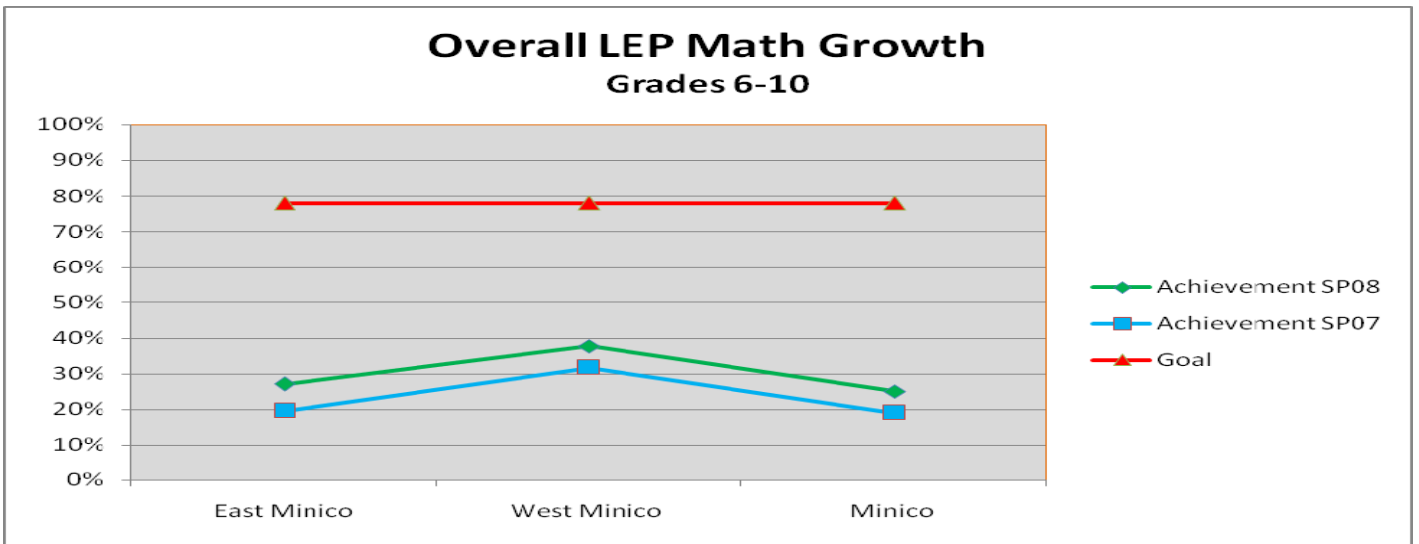
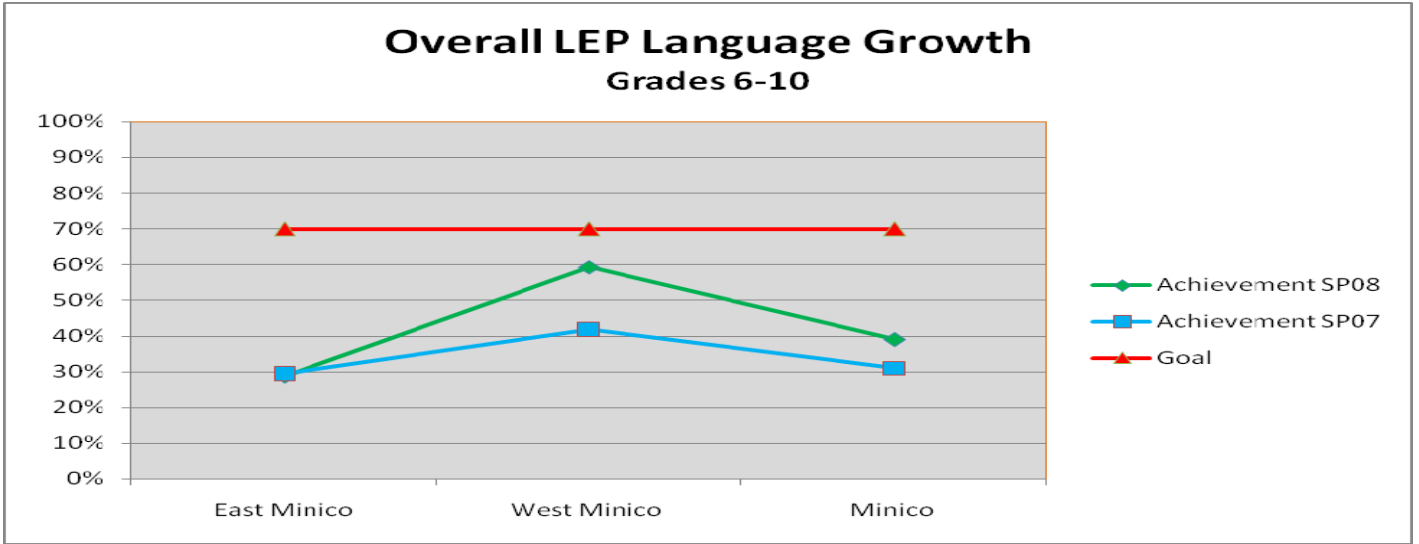
**Comparison of Percent Proficient and Advanced versus Spring Goal on Spring ISAT 2008
10th Grade Reading - District**



◆ Proficient & Above SP08
■ Goal

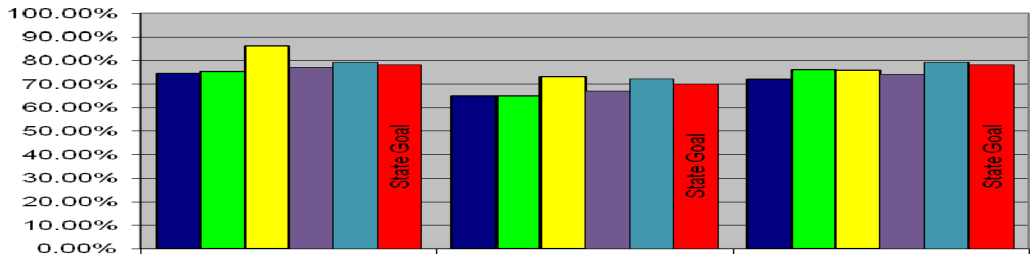
| | District | State | Mt. Harrison | Minico |
|-------------------------|----------|-------|--------------|--------|
| Proficient & Above SP08 | 73% | 86% | 33% | 77% |
| Goal | 78% | 78% | 78% | 78% |

Secondary School LEP Growth on the ISAT.



Adequate Yearly Progress

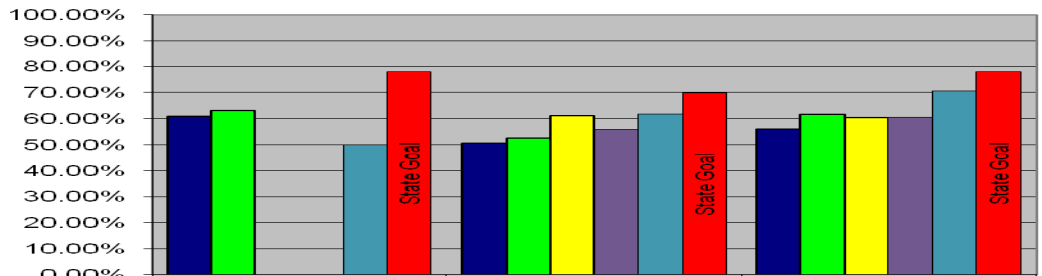
MCS D's Overall AYP Achievement
(State AYP data used)



| | | | |
|--------------------------------------|--------|--------|--------|
| ■ 2003-2004 % Proficient or Advanced | 74.22% | 64.70% | 72.04% |
| ■ 2004-2005 % Proficient or Advanced | 75.00% | 64.79% | 76.03% |
| ■ 2005-2006 % Proficient or Advanced | 85.95% | 72.85% | 75.74% |
| ■ 2006-2007 % Proficient or Advanced | 76.87% | 66.82% | 73.87% |
| ■ 2007-2008 % Proficient or Advanced | 79.18% | 72.26% | 79.17% |
| ■ State Goal | 78% | 70% | 78% |

| | LANGUAGE | MATH | READING |
|--------------------------------------|----------|--------|---------|
| ■ 2003-2004 % Proficient or Advanced | 74.22% | 64.70% | 72.04% |
| ■ 2004-2005 % Proficient or Advanced | 75.00% | 64.79% | 76.03% |
| ■ 2005-2006 % Proficient or Advanced | 85.95% | 72.85% | 75.74% |
| ■ 2006-2007 % Proficient or Advanced | 76.87% | 66.82% | 73.87% |
| ■ 2007-2008 % Proficient or Advanced | 79.18% | 72.26% | 79.17% |
| ■ State Goal | 78% | 70% | 78% |

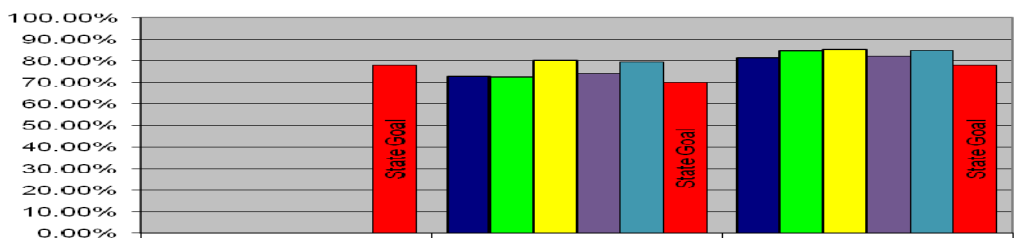
MCS D's Hispanic AYP Achievement
(State AYP data used)



| | | | |
|--------------------------------------|--------|--------|--------|
| ■ 2003-2004 % Proficient or Advanced | 61.02% | 50.75% | 56.02% |
| ■ 2004-2005 % Proficient or Advanced | 63.06% | 52.54% | 61.62% |
| ■ 2005-2006 % Proficient or Advanced | | 61.22% | 60.44% |
| ■ 2006-2007 % Proficient or Advanced | | 55.97% | 60.66% |
| ■ 2007-2008 % Proficient or Advanced | 50.13% | 61.73% | 70.71% |
| ■ State Goal | 78% | 70% | 78% |

| | LANGUAGE | MATH | READING |
|--------------------------------------|----------|--------|---------|
| ■ 2003-2004 % Proficient or Advanced | 61.02% | 50.75% | 56.02% |
| ■ 2004-2005 % Proficient or Advanced | 63.06% | 52.54% | 61.62% |
| ■ 2005-2006 % Proficient or Advanced | | 61.22% | 60.44% |
| ■ 2006-2007 % Proficient or Advanced | | 55.97% | 60.66% |
| ■ 2007-2008 % Proficient or Advanced | 50.13% | 61.73% | 70.71% |
| ■ State Goal | 78% | 70% | 78% |

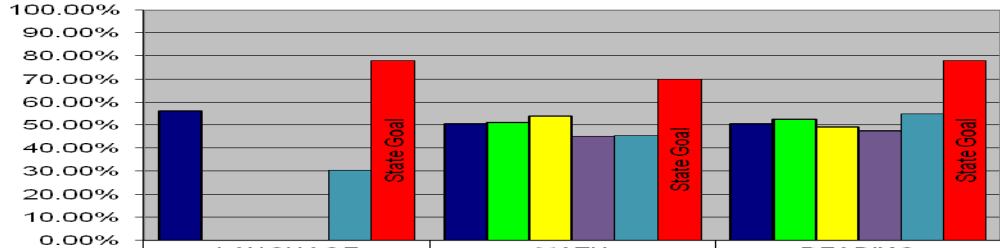
MCS D's White AYP Achievement
(State AYP data used)



| | | | |
|--------------------------------------|-----|--------|--------|
| ■ 2003-2004 % Proficient or Advanced | | 72.79% | 81.36% |
| ■ 2004-2005 % Proficient or Advanced | | 72.36% | 84.63% |
| ■ 2005-2006 % Proficient or Advanced | | 80.18% | 85.33% |
| ■ 2006-2007 % Proficient or Advanced | | 74.04% | 82.30% |
| ■ 2007-2008 % Proficient or Advanced | | 79.30% | 84.94% |
| ■ State Goal | 78% | 70% | 78% |

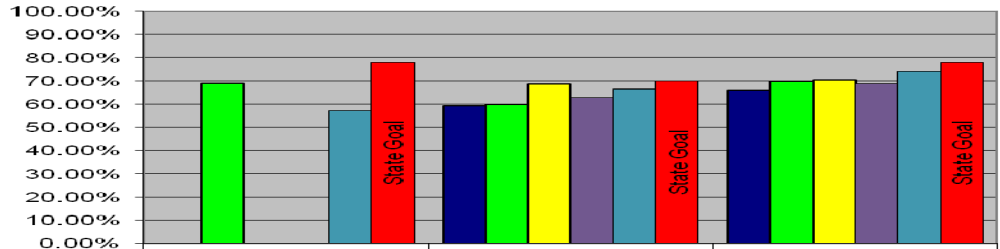
| | LANGUAGE | MATH | READING |
|--------------------------------------|----------|--------|---------|
| ■ 2003-2004 % Proficient or Advanced | | 72.79% | 81.36% |
| ■ 2004-2005 % Proficient or Advanced | | 72.36% | 84.63% |
| ■ 2005-2006 % Proficient or Advanced | | 80.18% | 85.33% |
| ■ 2006-2007 % Proficient or Advanced | | 74.04% | 82.30% |
| ■ 2007-2008 % Proficient or Advanced | | 79.30% | 84.94% |
| ■ State Goal | 78% | 70% | 78% |

MCS D's LEP AYP Achievement (State AYP data used)



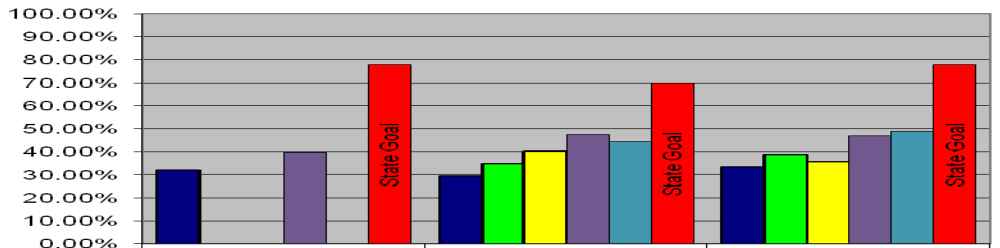
| | LANGUAGE | MATH | READING |
|------------------------------------|----------|--------|---------|
| 2003-2004 % Proficient or Advanced | 56.20% | 50.58% | 50.39% |
| 2004-2005 % Proficient or Advanced | | 50.94% | 52.56% |
| 2005-2006 % Proficient or Advanced | | 53.99% | 48.94% |
| 2006-2007 % Proficient or Advanced | | 45.24% | 47.44% |
| 2007-2008 % Proficient or Advanced | 30.42% | 45.63% | 54.75% |
| State Goal | 78% | 70% | 78% |

MCS D's ED AYP Achievement (State AYP data used)



| | LANGUAGE | MATH | READING |
|------------------------------------|----------|--------|---------|
| 2003-2004 % Proficient or Advanced | | 59.30% | 66.22% |
| 2004-2005 % Proficient or Advanced | 68.84% | 59.80% | 69.85% |
| 2005-2006 % Proficient or Advanced | | 68.58% | 70.48% |
| 2006-2007 % Proficient or Advanced | | 62.97% | 68.85% |
| 2007-2008 % Proficient or Advanced | 57.22% | 66.49% | 74.27% |
| State Goal | 78% | 70% | 78% |

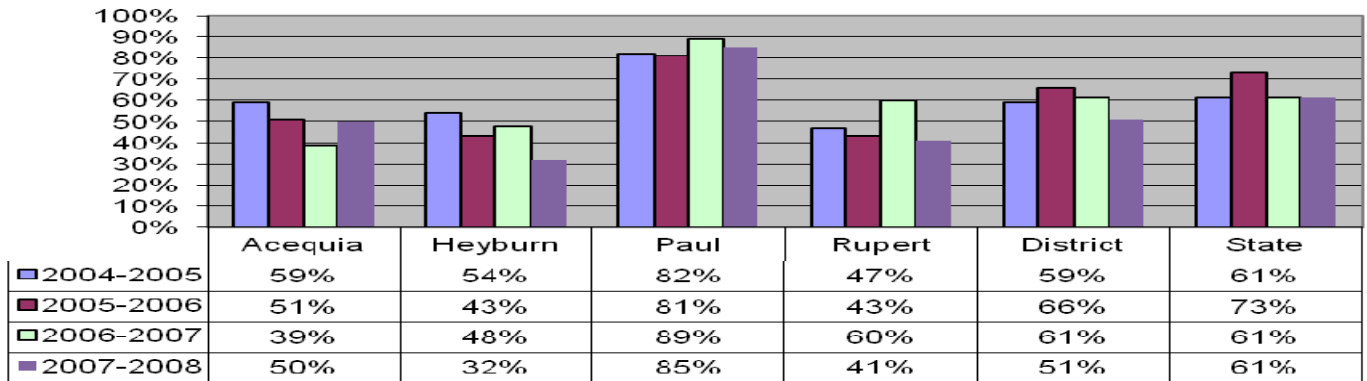
MCS D's SWD AYP Achievement (State AYP data used)



| | LANGUAGE | MATH | READING |
|------------------------------------|----------|--------|---------|
| 2003-2004 % Proficient or Advanced | 32.00% | 29.60% | 33.33% |
| 2004-2005 % Proficient or Advanced | | 34.94% | 38.79% |
| 2005-2006 % Proficient or Advanced | | 40.22% | 35.75% |
| 2006-2007 % Proficient or Advanced | | 47.44% | 46.98% |
| 2007-2008 % Proficient or Advanced | 39.91% | 44.32% | 49.06% |
| State Goal | 78% | 70% | 78% |

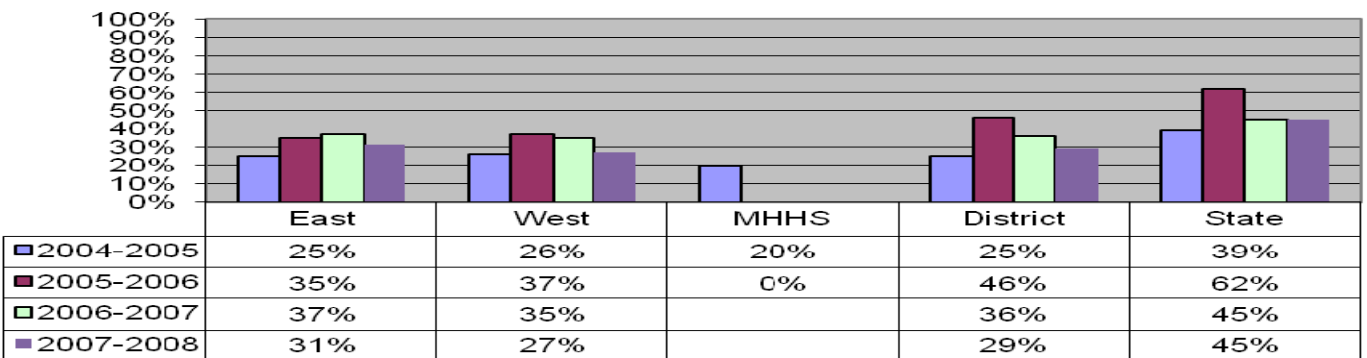
District Direct Math and Writing Assessment Results

**District Comparison Percent Proficient
(scored 3 or higher) on DMA 2004-2008
Grade 4**



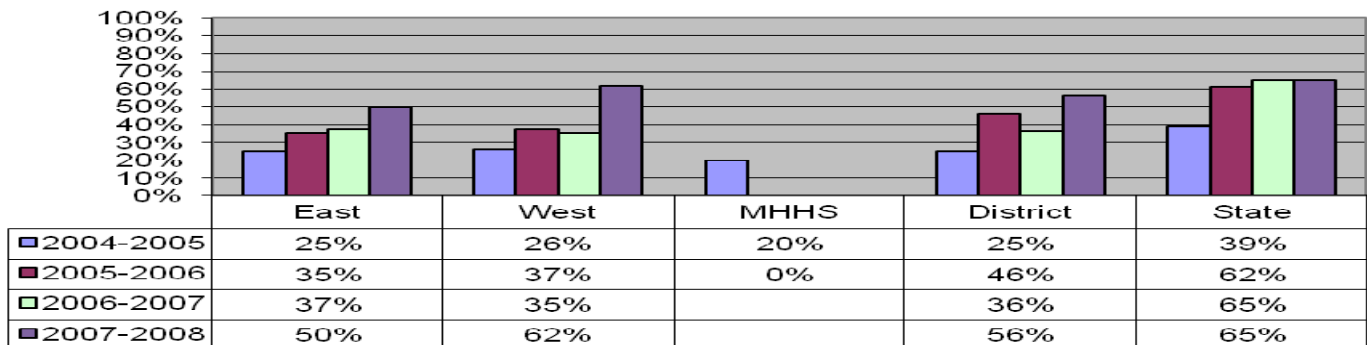
**District Comparison Percent Proficient
(scored 3 or higher) on DMA 2004-2008
Grade 6**

Note: 2004-2007 6th & 8th grade results are combined.

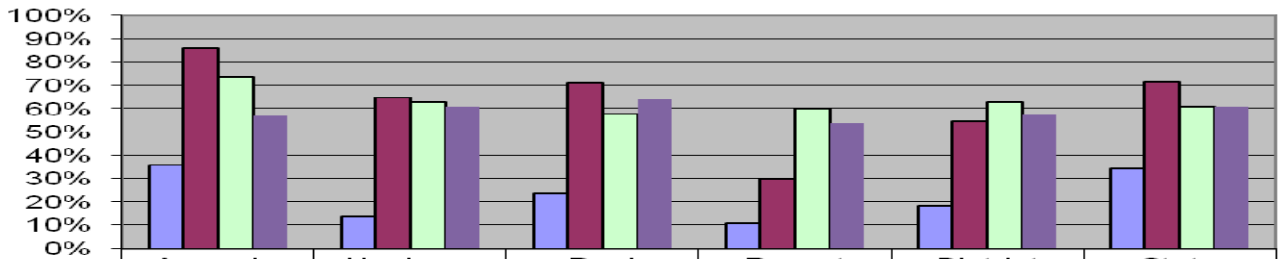


**District Comparison Percent Proficient
(scored 3 or higher) on DMA 2004-2008
Grade 8**

Note: 2004-2007 6th & 8th grade results are combined.

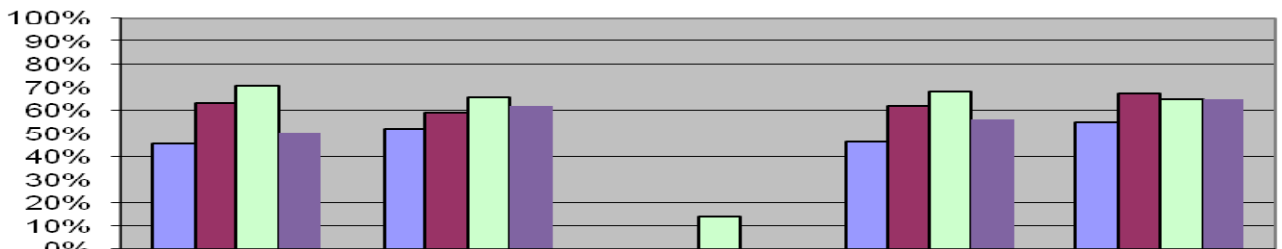


**District Comparison Percent Proficient
(scored 3 or higher) on DWA 2004-2008
Grade 5**



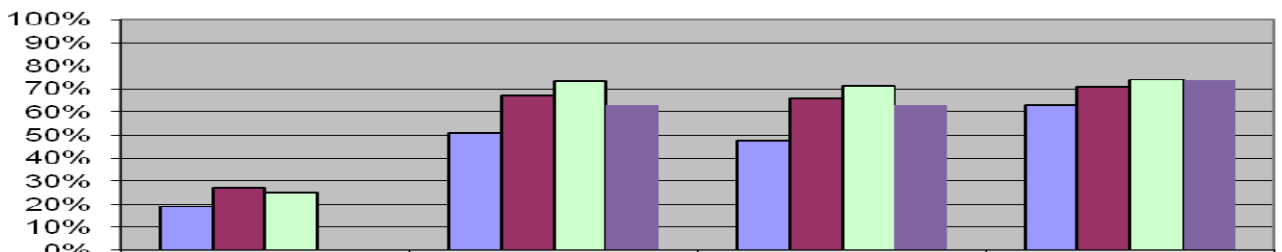
| | Acequia | Heyburn | Paul | Rupert | District | State |
|-----------|---------|---------|------|--------|----------|-------|
| 2004-2005 | 36% | 14% | 24% | 11% | 18% | 34% |
| 2005-2006 | 86% | 65% | 71% | 30% | 55% | 71% |
| 2006-2007 | 74% | 63% | 58% | 60% | 63% | 61% |
| 2007-2008 | 57% | 61% | 64% | 54% | 58% | 61% |

**District Comparison Percent Proficient
(scored 3 or higher) on DWA 2004-2008
Grade 7**



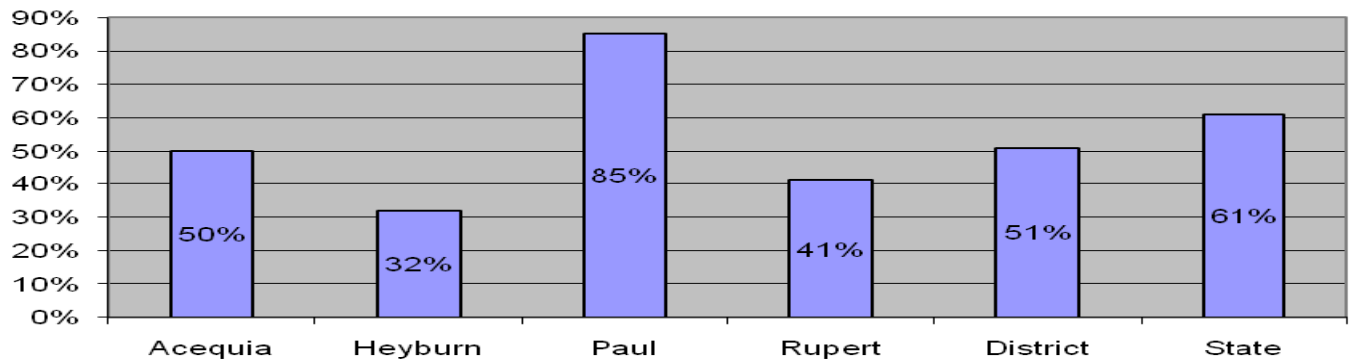
| | East | West | MHHS | District | State |
|-----------|------|------|------|----------|-------|
| 2004-2005 | 46% | 52% | | 47% | 55% |
| 2005-2006 | 63% | 59% | | 62% | 67% |
| 2006-2007 | 71% | 66% | 14% | 68% | 65% |
| 2007-2008 | 50% | 62% | | 56% | 65% |

**District Comparison Percent Proficient
(scored 3 or higher) on DWA 2004-2008
Grade 9**

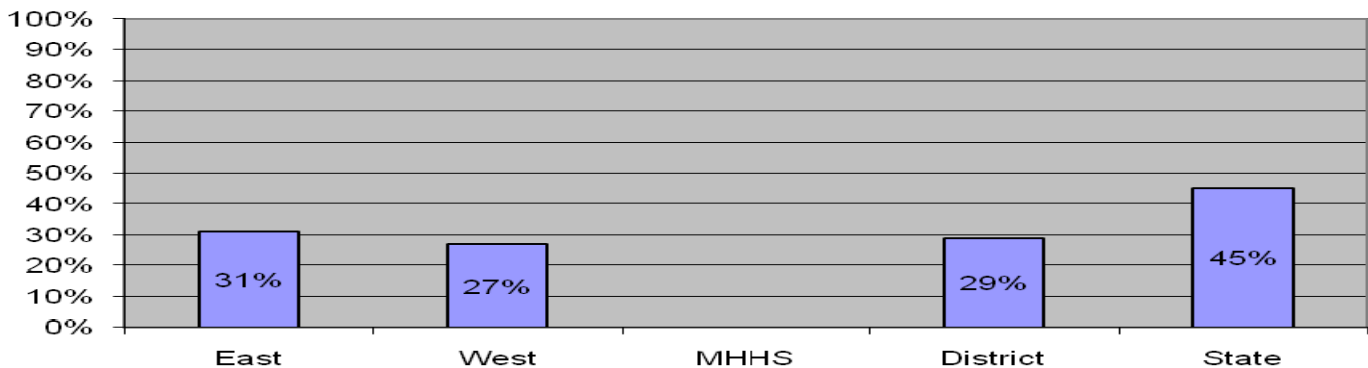


| | MHHS | Minico | District | State |
|-----------|------|--------|----------|-------|
| 2004-2005 | 19% | 51% | 47% | 63% |
| 2005-2006 | 27% | 67% | 66% | 71% |
| 2006-2007 | 25% | 73% | 71% | 74% |
| 2007-2008 | | 63% | 63% | 74% |

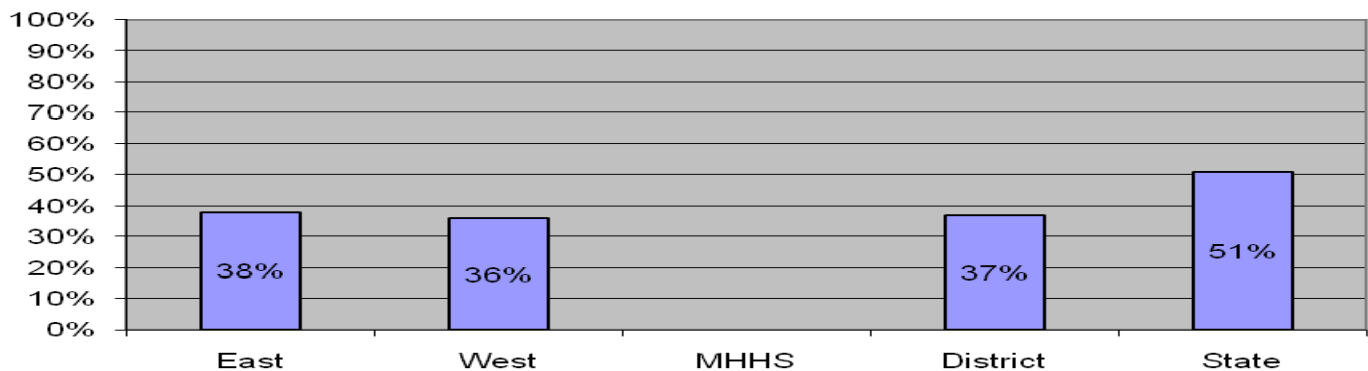
**District Comparison Percent Proficient
(scored 3 or higher) on 4th Grade
DMA 2007-2008**



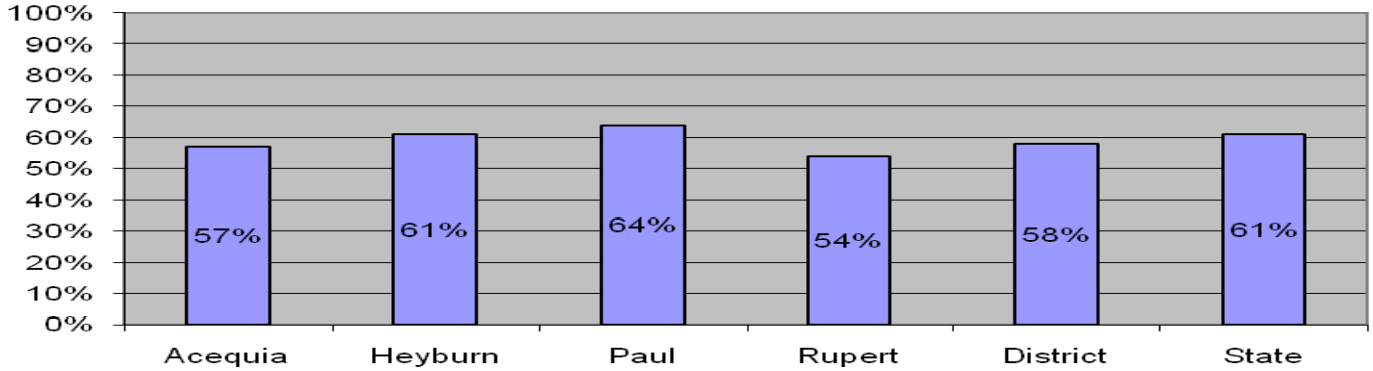
**District Comparison Percent Proficient
(scored 3 or higher) on 6th Grade
DMA 2007-2008**



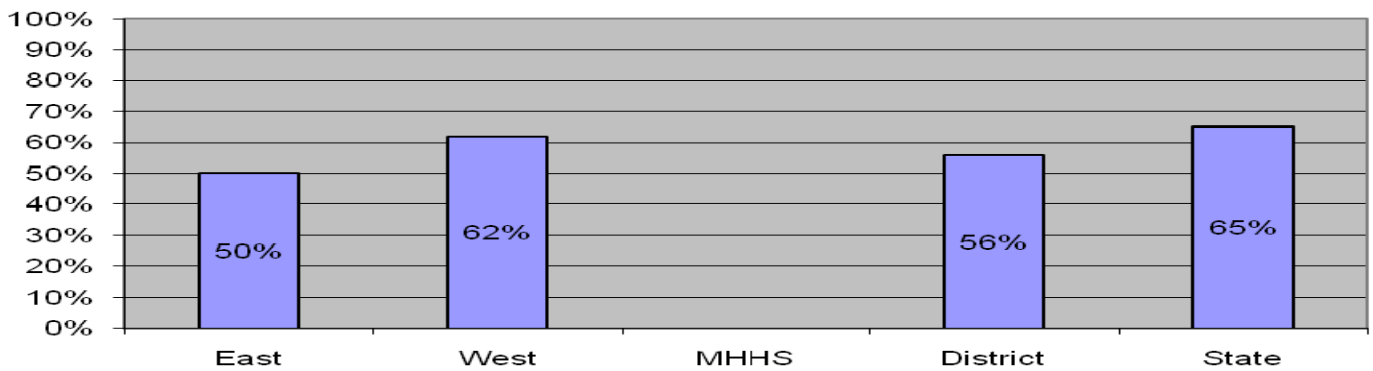
**District Comparison Percent Proficient
(scored 3 or higher) on 8th Grade
DMA 2007-2008**



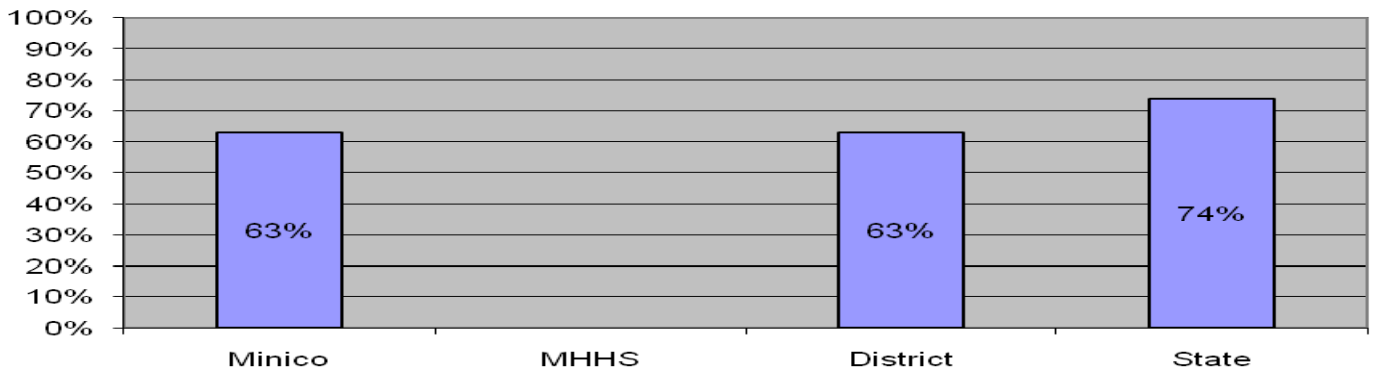
**District Comparison Percent Proficient
(scored 3 or higher) on 5th Grade
DWA 2007-2008**



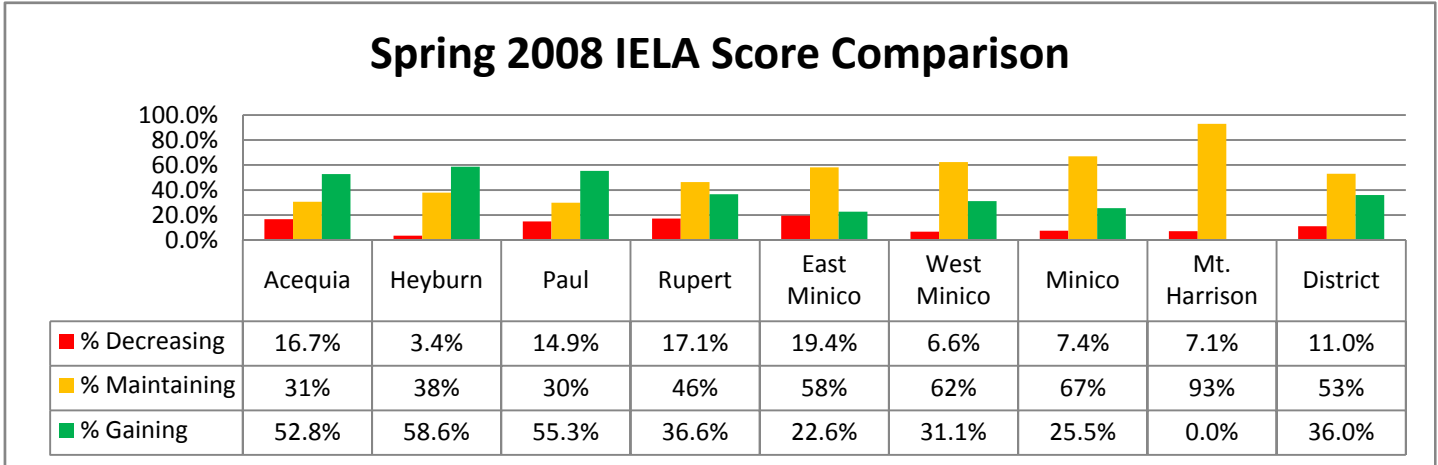
**District Comparison Percent Proficient
(scored 3 or higher) on 7th Grade
DWA 2007-2008**



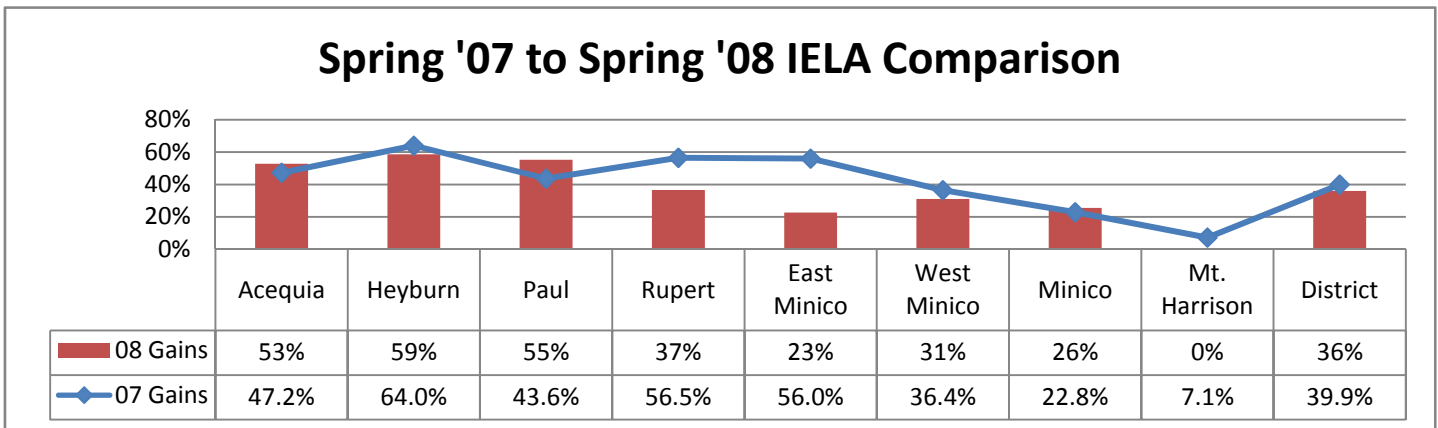
**District Comparison Percent Proficient
(scored 3 or higher) on 9th Grade
DWA 2007-2008**



Idaho English Language Assessment Results



Our goal is to exceed the gains from the previous year and although our academic proficiency data indicates we are making progress towards academic proficiency, the data below indicates our work with SIOP and instructional intensity is far from finished. To sustain the momentum of progress it is imperative that we build on our basic knowledge of SIOP and instructional intensity strategies with more advanced training so that our skills will continue to be refined and improved. As in the classroom we do not merely cover material for one day and expect our students to have mastered it, nor should we expect teachers to have mastered new instructional strategies after one year of training and coaching. Continued work with Jill Jackson, Rhonda Birnie and building coaches is necessary to sustain and improve upon the groundwork that has been laid.



Annual Measurable Achievement Objectives

| AMAO Determination Years | AYP - Reading | AYP - Math | Progress on the IELA | Fluency Attainment on the IELA |
|--------------------------|---|------------|---|--|
| Definitions → | % of LEP student that must meet proficiency on the ISAT | | % of LEP students that must advance one level of language proficiency on the IELA | % of LEP students that must attain proficiency on the IELA |
| Targets → | 78% | 70% | 55% | 20% |
| 2007-2008 | 54.75% | 45.63% | 35.16% | 15.98% |
| 2006-2007 | 47.77% | 45.24% | 39.90% | 10.54% |