



OMS School Board Presentation

October 2024

Topics



Highlights from the start of the year



Building Goals- Reading, T2H/LSCI & Restorative Practices



Redesigned SOAR Plan & How it works



PACK Program Introduction
Vision for future work

01

Highlights



Highlights

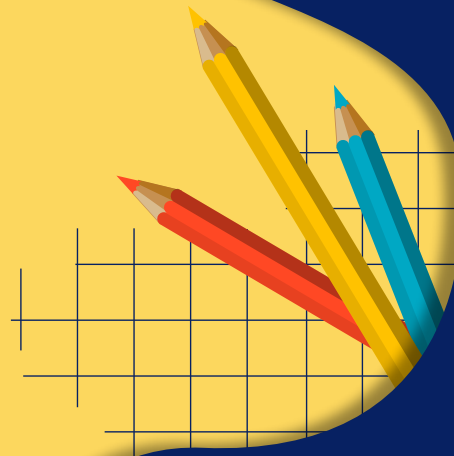
10/7/2024 = 1015 OMS Students

New staff—great additions

Developmentally appropriate behavior & energy

Activity Night- well attended, positive

Excitement for upcoming events and activities



02

Building Goals

OMS Building Goals

High Quality Teaching and Learning

- By the end of the 2024-25 School Year, 100% of OMS students will have received reading instruction in all content areas through staff use of evidence based reading strategies and weekly intervention/ enrichment opportunities resulting in a 3% increase in student scores on Spring 2025 MCA assessments.

WICOR, AVID, SOAR Redesign

Safe & Caring Community

- By the end of the 2024-25 School Year, OMS Certified Staff will have learned and implemented Teach to Heal/LSCI and Restorative practice strategies to use when interacting with students in the classroom or building setting as measured by training attendance and quarterly accountability checks.

Teach to Heal, LSCI, Restorative Practices

03

SOAR Redesign

SOAR: Skills, Organization, Accountability, Responsibility

Weekly Intervention/Enrichment Time

Ready and Math are our focus areas. Teachers are using research based intervention strategies and providing skills, organization and responsibility opportunities.

Predictable Schedule

Feedback from previous SOAR was need for more predictability and re-focus on initial intention of the time. Weekly, on TEAMS, retake/reteach and academic focus built in.

CHOICE SOAR

Students will have a CHOICE SOAR every quarter where they can sign up for fun activities and celebrate the hard work they've done during the rest of the rotation.

04

PACK Program

PACK: Participate, Acknowledge, Commit, Keep

Restorative Practice focused on Teaching Skills

Student/Parent agreement. 1:1 skills focused. Designed to hone in on social/emotional & behavioral skill development.

Supported Learning

Students work with AP, Counselor, BI and other trusted adults to identify the skills they need to improve, work to create a project around those skills and present their plan.

Decrease in Recidivism

Taking the time to teach the skills and focus on the positive leads to impactful learning!



Thank you!