



UNITED INDEPENDENT SCHOOL DISTRICT AGENDA ACTION ITEM

TOPIC: Approval of Proposed Boundary Changes for School Year 2011-2012

SUBMITTED BY: Mike Garza **OF:** Executive Director of Support Services

APPROVED FOR TRANSMITTAL TO SCHOOL BOARD: _____

DATE ASSIGNED FOR BOARD CONSIDERATION: February 16, 2011

RECOMMENDATION: Administration is recommending that the Board approve the Proposed Boundary changes for the school year 2011-2012 as presented for Col. Santos Elem., Clark Elem., Nye Elem., Newman Elem., Fasken Elem., Kazen Elem. and Finley Elem.

RATIONALE: To inform the board on potential boundary changes. The boundary changes are being proposed to provide efficient use of the district facilities.

BUDGETARY INFORMATION

N/A

BOARD POLICY REFERENCE AND COMPLIANCE

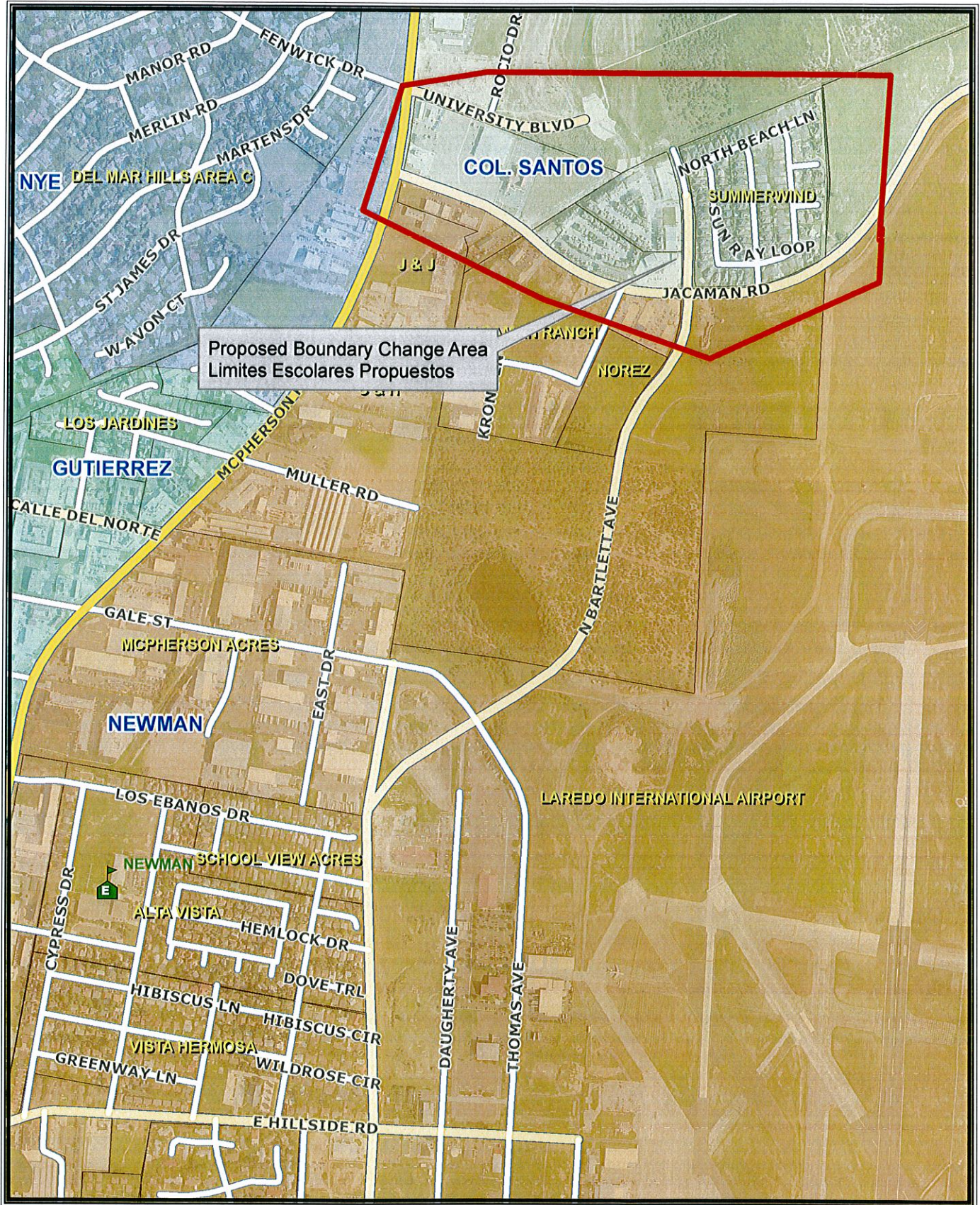
N/A

Proposed Breakdown for Col. Santos to Newman

Schools Affected	Projected Enrollment 2011-2012	New Boundary Change Impact	Adjusted Enrollment
Col. Santos	932	-48	884
Newman	563	48	611

Col. Santos to Newman proposed boundary change [map.pdf](#)

2011-2012 Boundary Change for Col. Santos to Newman



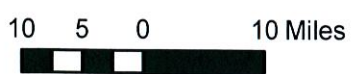
Proposed Boundary Change Area
 Limite Escolares Propuestas



UNITED INDEPENDENT SCHOOL DISTRICT



This agency is not responsible for the misinterpretation of this map.
 This map does not meet national map accuracy standards and
 should not be used for engineering purposes.

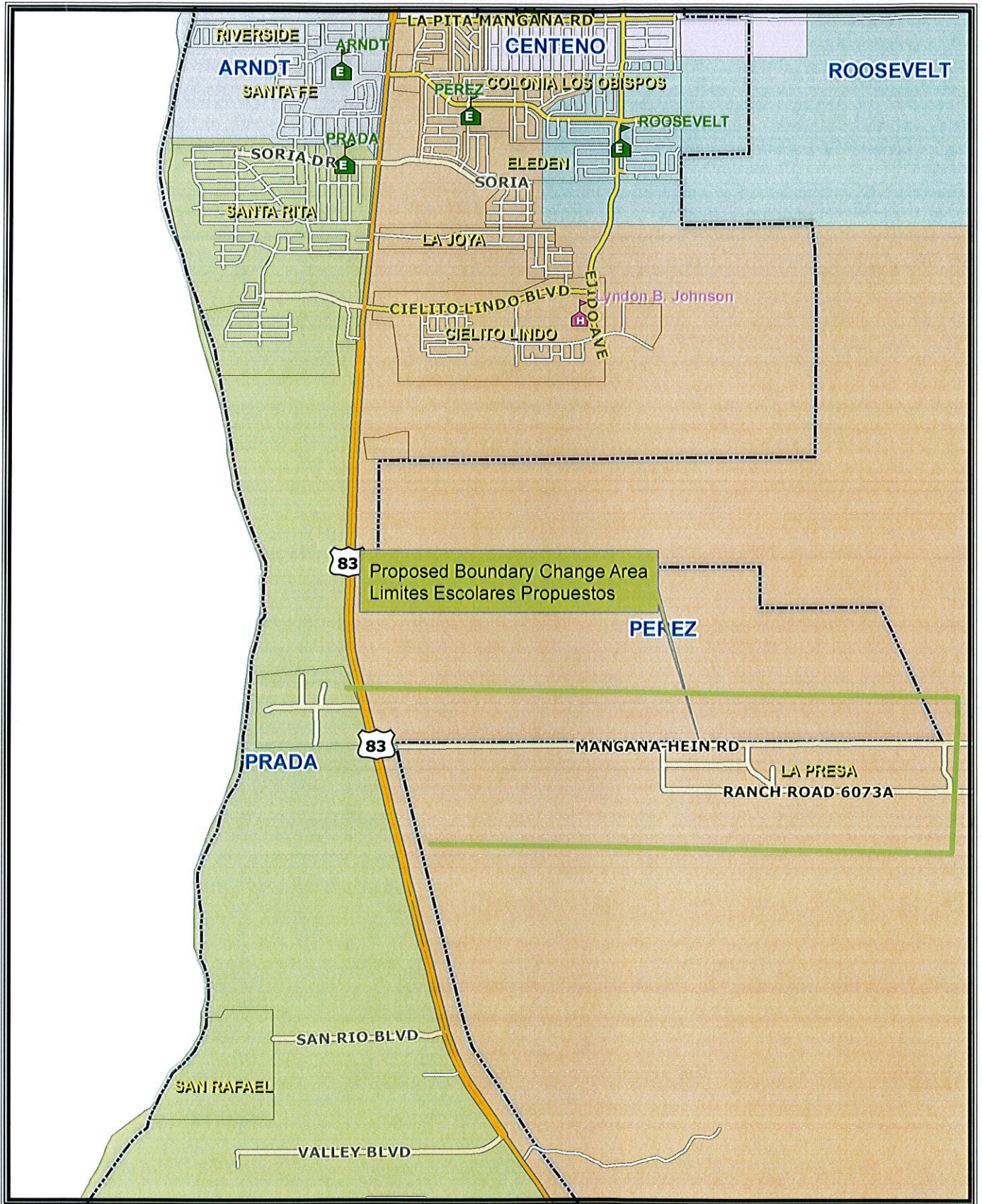


Proposed Breakdown for Perez to Prada

Schools Affected	Projected Enrollment 2011-2012	New Boundary Change Impact	Adjusted Enrollment
Perez	1061	-51	1010
Prada	797	51	848

Perez to Prada proposed boundary change [map.pdf](#)

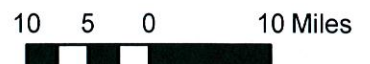
2011-2012 Boundary Change for Perez to Prada Elementary



UNITED INDEPENDENT SCHOOL DISTRICT



This agency is not responsible for the misinterpretation of this map.
 This map does not meet national map accuracy standards and
 should not be used for engineering purposes.

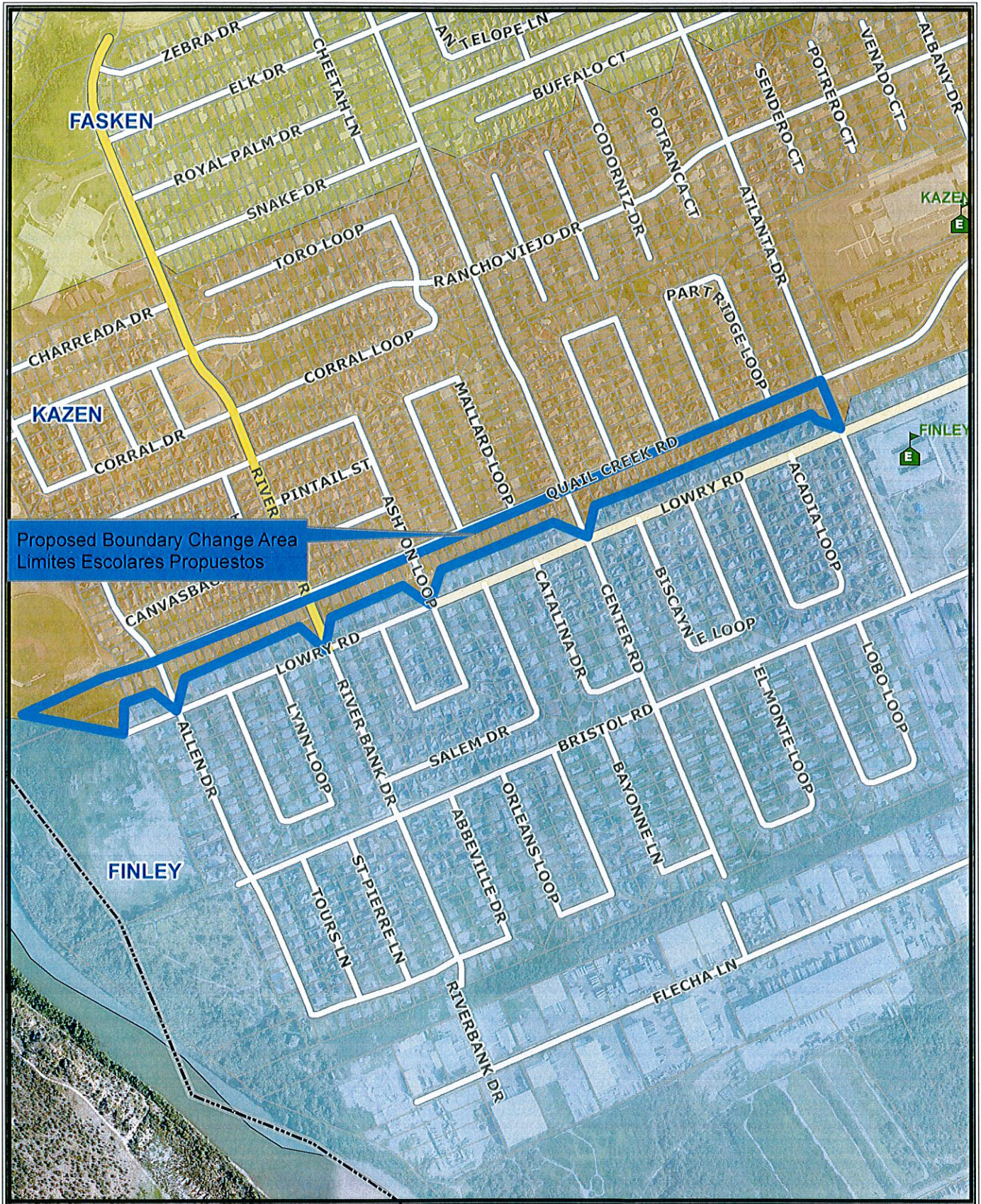


Proposed Breakdown for Kazen to Finley

Schools Affected	Projected Enrollment 2011-2012	New Boundary Change Impact	Adjusted Enrollment
Kazen	518	-13	505
Finley	551	13	564

Kazen to Finley proposed boundary change [map.pdf](#)

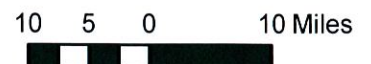
2011-2012 Boundary Change for Kazen to Finley Elementary



UNITED INDEPENDENT SCHOOL DISTRICT



This agency is not responsible for the misinterpretation of this map.
This map does not meet national map accuracy standards and
should not be used for engineering purposes.



Proposed Breakdown for Fasken to Kazen

Schools Affected	Projected Enrollment 2011-2012	New Boundary Change Impact	Adjusted Enrollment
Fasken	1061	-121	940
Kazen	518	121	639

Fasken to Kazen proposed boundary change [map.pdf](#)

2011-2012 Boundary Change for Fasken to Kazen Elementary



UNITED INDEPENDENT SCHOOL DISTRICT



This agency is not responsible for the misinterpretation of this map.
This map does not meet national map accuracy standards and
should not be used for engineering purposes.

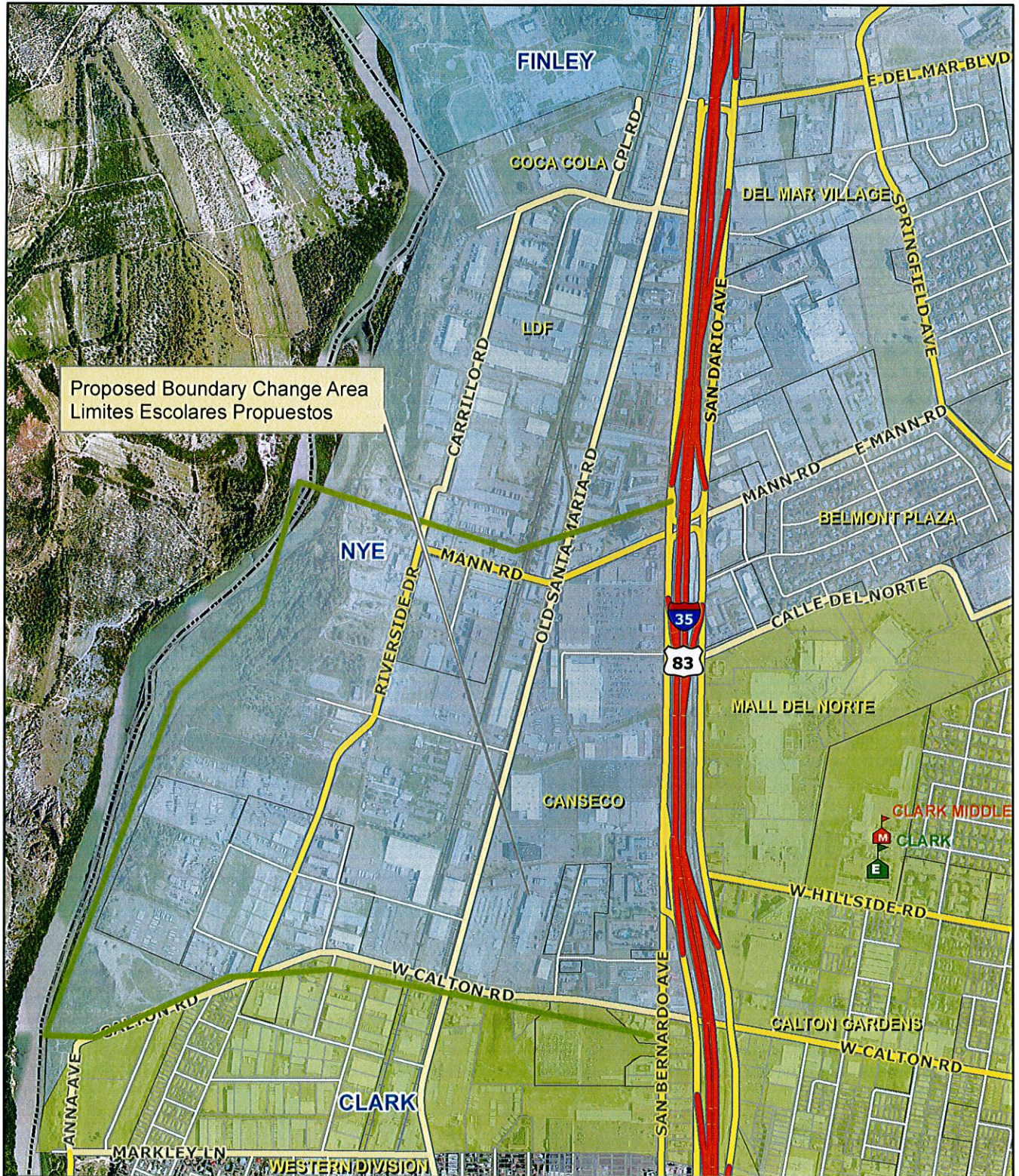


Proposed Breakdown for Nye to Clark Elementary

Schools Affected	Projected Enrollment 2011-2012	New Boundary Change Impact	Adjusted Enrollment
Nye Elem	884	-18	866
Clark Elem	548	18	566

Nye to Clark proposed boundary change [map.pdf](#)

Boundary Change from Nye to Clark Elementary



UNITED INDEPENDENT SCHOOL DISTRICT



This agency is not responsible for the misinterpretation of this map.
This map does not meet national map accuracy standards and
should not be used for engineering purposes.

