

Royalton Elementary & Early Childhood Center School Handbook 25-26

Royalton Elementary School
119 North Driftwood
Royalton, MN 56373
(320) 584-4100

Early Childhood Center
120 South Hawthorn
Royalton, MN 56373
(320) 584-4002

High Levels of Learning for All Students

"A shared commitment to create a caring community where every child is valued and curiosity, creativity, and the desire to learn is encouraged."



"Always striving and taking steps to create a better learning experience for our students."

Royalton Elementary School

ROYALTON DISTRICT CALENDAR

2025-2026

JULY

M	T	W	T	F
	1	2	3	4
7	8	9	10	11
14	15	16	17	18
21	22	23	24	25
28	29	30	31	

AUGUST

M	T	W	T	F
				1
4	5	6	7	8
11	12	13	14	15
18	19	20	21	22
25	26	27	28	29

Open House MS/HS-Aug. 27 - 5:30-7:30 pm
ES Parent/Teacher Conf.-Aug. 27 - 12:00-7:45 pm

SEPTEMBER

M	T	W	T	F
1	2	3	4	5
8	9	10	11	12
15	16	17	18	19
22	23	24	25	26
29	30			

1st Day of School Grades 6-8 - Sept. 2
1st Day of School Grades K-5 & 9-12 - Sept. 3
ES/Parent Teacher Conferences - Sept. 2 8:00-4:00 pm

OCTOBER

M	T	W	T	F
		1	2	3
6	7	8	9	10
13	14	15	16	17
20	21	22	23	24
27	28	29	30	31

MS/HS Conferences Oct. 20 & 23 - 5:00-8:30 pm
ES Conferences Oct. 28 & 30 - 4:00-7:30 pm
ES End of 1st Quarter - Oct. 31
HS Mid-Semester 1 - Oct. 31

NOVEMBER

M	T	W	T	F
3	4	5	6	7
10	11	12	13	14
17	18	19	20	21
24	25	26	27	28

DECEMBER

M	T	W	T	F
1	2	3	4	5
8	9	10	11	12
15	16	17	18	19
22	23	24	25	26
29	30	31		

JANUARY

M	T	W	T	F
			1	2
5	6	7	8	9
12	13	14	15	16
19	20	21	22	23
26	27	28	29	30

ES End of 2nd Quarter - Jan. 16
MS/HS End of Semester - Jan. 16

FEBRUARY

M	T	W	T	F
2	3	4	5	6
9	10	11	12	13
16	17	18	19	20
23	24	25	26	27

MS/HS Conferences Feb. 19 - 5:00-8:30 pm
MS/HS Conferences Feb. 23 - 1:00-8:30 pm

MARCH

M	T	W	T	F
2	3	4	5	6
9	10	11	12	13
16	17	18	19	20
23	24	25	26	27
30	31			

ES End of 3rd Quarter - March 27
ES Conferences March 3 & 5 - 4:00-7:30 pm
HS Mid-Semester 2 - March 27

APRIL

M	T	W	T	F
		1	2	3
6	7	8	9	10
13	14	15	16	17
20	21	22	23	24
27	28	29	30	

MAY


M	T	W	T	F
				1
4	5	6	7	8
11	12	13	14	15
18	19	20	21	22
25	26	27	28	29


Graduation - May 29
Student's Last Day - May 29

JUNE

M	T	W	T	F
1	2	3	4	5
8	9	10	11	12
15	16	17	18	19
22	23	24	25	26
29	30			

 Teacher Day - No School

 Comp Day - No School

 No School

 Early Out

Semester Length:

1st Semester
September 2-January 16
2nd Semester
January 20-May 29

School Days	STUD	TCHR
August	0	6
September	21	21
October	21	21
November	16	18
December	17	17
January	19	20
February	17	18
March	20	21
April	19	20
May	20	20
June	0	1
	170	183

"A World of Knowledge"

Vision: A shared commitment to create a caring community where every child is valued and curiosity, creativity, and the desire to learn is encouraged."

Royalton Elementary School Goals

- Instill a Love for Learning
- Achieve Academic Excellence through Active Learning
- Integrate the Arts and Promote Creativity
- Discover Individual Strengths, Talents, and Interests
- Value Relationships and Personal Wellness
- Honor Diversity and Individuality
- Establish Digital Technology Proficiency
- Develop Global Awareness, Understanding, and Skills
- Support Environmental and Outdoor Education
- Acquire Critical Thinking and Problem Solving Skills through Inquiry, Questioning Skills, and Project Based Learning
- Form Partnerships with Peers, Parents, Community, and the Larger World to Advance the Common Good

TABLE OF CONTENTS

After School Pick Up Procedure	4
Attendance	5
Breakfast	7
Bullying Policy	17
Bus Rules	10
Cell Phone & Electronic Devices Policy	6
Chain of Communication	7
Change In Routine	3
Check In/Check Out	4
Closings	14
Cold Weather Policy	7
Community Ed Activities	17
Cumulative Records	14
District Discipline Policy	18
Dress Policy	6
Field Trips	12
Forgotten Items	10
Gym Shoes	7
Harassment & Violence Policy	15
Hazing Policy	17
Health Policies & Procedures	9
Kindergarten	15
Latex	8
Lost & Found	10
Lunch, Breakfast, & Milk Payments	7
MAP Information	5
Medical Information	8
Newsletters	15
Possession of Illegal Substances	12
Progress Reports	14
Promotion/Retention Policy	17
Reasonable Force	15
Recess Expectation	7
School Calendar	22
School Hours	3
Arrival Time	
Dismissal Time	
School Philosophy	2
School Property	12
School Rules – PAWS Matrix	13
Section 504 Policy	17

Special Services	12
Staff List	21
Staff Notification of Violent Behavior by Students	19
Student Pickup	4
Student Respect of Faculty/Staff	12
Telephone	5
Testing	14
Title IX	19
Tobacco-Free Policy	16
Treats	15
Visitors	16
Volunteer Program	15
Walker Information	4
Weapons Policy	17
Welcome Letter	1
Winter Clothing Recommendations	7

Welcome to Royalton Elementary School!

Dear Parents,

Welcome to a new school year at Royalton Elementary School. We are very excited about working with you and your children. Our goal is to provide an exceptional education in a caring and nurturing environment. We will do everything possible to ensure that each child has a positive and successful experience at our school.

Throughout the year, many valuable learning opportunities will be offered to your children. These will range from core instruction in essential academic skills to enrichment activities such as field trips, assemblies, Reading is Fundamental (RIF) book distributions, environmental learning activities, Kids Heart Challenge, reading buddies, after school programs, and special events. Royalton Elementary is committed to providing a comprehensive education that meets the needs of the whole child.

This handbook provides an overview of our school's goals, expectations, and policies. Please read through the information carefully so that you will have a fuller understanding of the entire scope of our program. It will also be a valuable guide if questions or concerns should arise. Your input on the content of our handbook is welcome.

As principal, my goal is to provide excellent leadership in maintaining and improving the quality of our elementary school program. I am committed to encouraging everyone in the school community to work together for the benefit of the children. Our school and parent community partnership is what makes us strong.

Thank you for the many important ways you support your children's education. I look forward to a rewarding, productive, and successful school year for everyone.

Sincerely,

Mr. Anthony Neumann, Principal

SCHOOL PHILOSOPHY

The staff at Royalton Elementary School believe each student is a special person entrusted to our care. Our goal is to nurture each child's unique talents through a positive climate that motivates students to enjoy learning. We view parents as the primary caregivers, and we will act in cooperation with them to provide their children with a quality education.

We are committed to the development of the whole child and will work to meet their academic, social, emotional, and physical needs. Beyond a strong basic education, we will provide enrichment activities to match students' individual interests and creative talents.

We are also dedicated to teaching our students good citizenship and civic responsibility. A concern, tolerance, and respect for others are values we will teach by example and instruction. The atmosphere at our school will reflect dignity, and we will provide reasonable limits to maintain an orderly environment.

We will strive to establish an open relationship with the entire community. Parent involvement, volunteer activity, and community service projects are encouraged. We also believe in the continuing education of our school staff through professional development and ongoing review of effective policy and practice.

SCHOOL HOURS

School hours for teachers vary from 7:30am – 4:00pm.

You may contact teachers during these hours. However, they may need to return your phone call during their prep time.

ARRIVAL TIME – ROYALTON ELEMENTARY SCHOOL

Children who do not ride a bus should not come to school until **after 8:00 a.m.** (bus arrival time). We do not have adequate supervision for the children until after that time. Children who arrive before 7:45 a.m. will be required to go to the morning MAP program. Families will be charged for 30 minutes of supervision. Children who arrive after 7:45 a.m. will be required to sit in the cafeteria until 8:00 a.m. The school day for students begins at 8:25 a.m. Elementary, K-5, attendance calls should be directed to the attendance secretary at (320) 584-4161.

ARRIVAL TIME – EARLY CHILDHOOD CENTER

The school day for Kindergarten is at 8:25 a.m. until 3:05 p.m. Kindergarten students can be dropped off at 8:00 a.m. and breakfast will be available from 8:00 a.m. to 8:25 a.m. If the children are early, we will have supervision from 7:45 a.m. – 8:00 a.m. If you need to drop your kindergarten children off earlier, they will need to be dropped off at morning MAP at the elementary school and then students will be bussed. Kindergarten attendance calls, bus passes, and/or change in daily routine notes, etc. should be communicated to the Elementary Attendance Secretary at (320) 584-4161.

DISMISSAL TIME

Official dismissal time for our students is 3:05 p.m. All students will be asked to leave the building at this time unless they have been given special permission from a teacher to remain after school. Any student not picked up by 3:10 p.m. will be brought to the attendance office where a phone call will be made home to pick up your child.

Students are supervised while loading the bus. Written permission is required from the parent along with approval from the transportation director before a student is allowed to ride a bus other than his/her regular bus or getting off anywhere other than their normal stop.

CHANGE IN CHILD'S ROUTINE

Your child's end-of-day routine should be as "routine" as possible. On the rare occasion when you must change your child's end of the day destination, you must send a note with your child to school. It will be necessary for you to send a separate note with each of your children to give to their classroom teacher. Please do not list more than one student on each note. The child's teacher will initial the note and have your child bring it to the office. Your note must include:

- Date
- Your child's teacher's name
- Your child's name
- Emergency telephone number where you can be reached; and
- Your child's destination (specific name or place).

The school telephones are for school business and emergencies only (this statement is not intended to discourage calls to teachers about classroom concerns). Telephone messages cause disruption for the students in the classroom. The telephones are not to be used to change your child's after school arrangements, unless it is an emergency. An emergency is defined as:

- An extraordinary event such as a family tragedy or an emergency (e.g. serious illness, automobile accident, etc.).

Please call the school and do not send an email as to where your child should go after school. We could have network issues, substitutes, or increased lag time to respond and get the message out to those that need it.

STUDENT PICK UP/CHECK IN/CHECKOUT

When parents/guardians come to pick up students during school hours, please use the following procedure:

1. Elementary School: Park on the south side of the building. Buses pick up on the East side of the building.

Early Childhood Center: Park on the south side of the building and enter through Door 2. Buses pick up on the West side of the building. Please do not park in the bus parking area to wait for your child, you will be asked to move your vehicle.

2. For the children's safety they are not allowed to walk home during the school day. Please make arrangements to pick your child up if early dismissal is necessary.

3. **Use the Elementary south office (Door 1) for:**

- *Checking in/out students in grades 1-5 when coming in late or leaving early
- *Volunteers and classroom visitors
- *Lunchtime visitors – if eating lunch they will need to pay for lunch at the office before eating
- *People dropping off forms for distribution
- *Field trip chaperones
- *School visitors – copy repairman, kitchen inspectors, electrical inspectors, etc.
- *Midstate staff
- *Parents dropping off students' band instruments, lunches, birthday treats, etc.
- *Payments for MAP or Community Ed.

Use the Early Childhood Center office (Door 2) for:

- *Parents checking in/out students in Kindergarten coming in late or leaving early
- *Someone is picking up a student at the end of the day, other than a parent or usual pick-up person
- *Volunteers and classroom visitors
- *Lunchtime visitors – if eating lunch they will need to pay for lunch at the office before eating
- *People dropping off forms for distribution
- *Field trip chaperones
- *School visitors – copy repairman, kitchen inspectors, electrical inspectors, etc.
- *Midstate staff
- *Parents dropping off students' lunches, birthday treats, etc.

4. Parents picking up sick students will come to the Elementary south office or the Early Childhood Center office and get their students from the nurse's office and sign them out.
5. Substitute staff will check in/out in the Elementary Main office or Early Childhood Center.

AFTER SCHOOL PICK UP PROCEDURE - ELEMENTARY

- *Vehicle pickup line will assemble on N. Ivy St. on the south side of the school.
- *Stay in your vehicle and have the sign with student name/grade visible in passenger window.
- *School staff will notify students when their vehicle is in the pick up zone.
- *For the safety of the students, please remain in your vehicle.

WALKER INFORMATION

Preschool and Kindergarten students will not be allowed to walk home unless escorted by an adult.

- ☐ **All** Elementary School walkers must have a **note** that is **SIGNED** and **DATED** stating that parent or guardian gives permission for their child to walk home.

- If your child will be walking home **every day** you can just write **one note** stating that.

- If your child has an **every other week schedule** to walk home please **send us a monthly note at the beginning of each month** so the office, their teacher, and the after school staff walkers know what days they can be walking home.
- If your child is a walker on certain days but decides to **walk on a not scheduled day, then they need a note from their parent/guardian stating that "yes" they give permission for their child to walk today.** *For example if the student who is scheduled walk Wednesday and Thursday of the week decides to walk home on a Tuesday, then they need a note from the parent/guardian stating that they can walk that day.*

☐ According to school policy **all** children who are walking home need to walk to their destination. For example: Your child can't make the decision to play at the playground before going home; they actually have to go where they are supposed to go after school first, then they are more than welcome to come back to the elementary school.

☐ According to school policy **all** children need to dress for the weather in the winter months which consists: **Jacket/Coat/Hat/Mittens/Gloves/Boots.**

☐ **All** walkers need to follow school rules while waiting to be dismissed to walk home.

- If a walker decides not to follow the school rules then the walking staff will talk to the walker.

1. We give warnings to let the walker know what they are doing is not acceptable.

2. If a walker receives **more than three** warnings in one week the student will be written up and the slip given to Mr. Neumann with a copy to the student's teacher.

If a walker decides to make an **unsafe decision** that will put **he/she or others in immediate danger**, the walker will be written up and the slip given to Mr. Neumann with a copy to the student's teacher.

☐ While we wait for the buses to pass, we expect the students to act respectfully. For example, we do not allow the students to eat food, chew gum, bully, use their iPad, toss footballs, etc. The students can drink water; other beverages are not allowed.

MAP INFORMATION

Before and after school MAP will still be held at the Royalton Elementary School for Preschool (age 4) through Grade 5. Early Childhood students who attend morning MAP will be bused to the Early Childhood Center shortly after 8:00 a.m.

Kindergarten students attending MAP after school will be bused to the Royalton Elementary School from the Early Childhood Center.

USE OF THE TELEPHONE

Children will be permitted to use the school telephone only in emergency situations.

ATTENDANCE POLICY (Policy 503)

MINNESOTA STATE LAW REQUIRES ALL STUDENTS TO ATTEND SCHOOL FROM AGE SEVEN TO SIXTEEN.

Satisfactory progress in school requires regular attendance. Absences create problems for both students and teachers. Students who are absent frequently get behind in their lessons and tend to lose interest in school. It is almost impossible to give the student individually what he/she has missed in class discussion and group work. In the event your child is absent for more than three days because of illness, please contact the school office regarding make-up work.

When your child will be absent, please call the Royalton Elementary School attendance secretary at 320-584-4161 or Early Childhood Center 320-584-4002 by 8:00 a.m. This call should be made every day your child is absent. You can leave a message 24 hours a day if there is no answer. Please give your name, student's name and the reason why your child will not be at school.

For those parents who do not call, someone from the school will call you from 8:30 - 9:30 a.m. We are willing to make these calls, but things will go much better if you call the school before 8:00 a.m. If phone contact is not made, a written note must be sent when your child returns to school or the absence will be counted as unexcused.

Under Minnesota Law (MS 260A.02), a child who misses three days of school without a valid excuse is considered continuing truant. If this should occur, the parents will be formally notified by the school in writing. A child who is absent without valid excuse for seven days is considered (by law) habitually truant (MS 120.01) and the school will file a report of educational neglect.

Students who are tardy must be signed in by their parent at the office before going to their class. If a student is not signed in at the office, he/she may be counted absent for the entire day.

Students who become ill during the school day and are going home must sign out in the office. Parents should not take students out of school without notifying the school first.

When student absences are excessive, the school may require medical slips to be excused. If a student is absent five days in a row, a doctor's note may be required for those absences to be excused.

CELL PHONE AND ELECTRONIC DEVICES POLICY

Student cell phones, smart watches (other than for keeping time) and other personal electronic devices are not to be used during the day without staff permission, even during recess. If a student has a cell phone, the expectation is that the device is in their locker, secured in their backpack and powered off. Devices should not be used in the hallways or while waiting for parent pick up. If there is an emergency, please call the school office. Devices used without permission during the day will be brought to the office, where they can be claimed by the student's parent or guardian. Again, the expectation is that student cell phones are to be kept in their lockers and secured in their backpacks.

DRESS POLICY (Policy 504)

Good grooming is essential to a proper teaching-learning environment. Students are encouraged to dress appropriately for school activities.

Appropriate clothing includes, but is not limited to the following:

- Clothing appropriate for the weather
- Clothing that is neat, clean and in good taste at all times.
- Clothing that does not create a health or safety hazard.
- Clothing appropriate for the activity (e.g. physical education or classroom).

Inappropriate clothing includes, but is not limited to the following:

- "Short shorts," skimpy tank tops, tops that expose the midriff, and other clothing that is not in keeping with community standards.
- Clothing bearing a message that is vulgar, obscene or inappropriate for school.
- Any clothing or footwear that would damage school property.
- Hats are not to be worn in the building except with the approval of the building principal (e.g. student undergoing chemotherapy, medical situations or designated special days).
- Shoes shall be worn at all times except for activities with teacher/principal approval.

COLD WEATHER POLICY

The children go outside for recess daily. They must have clothes appropriate for the weather. Hats and gloves are required in the winter. Students will need to wear boots to play in snow areas. Temperature guidelines for going out for recess in the winter are –5 degrees Fahrenheit or –10 degrees Fahrenheit wind chill.

Winter Clothing Recommendations

Under 60 degrees:

Sweatshirt or coat, shoe covering whole foot

Under 40 degrees:

Coat, snow pants*/long pants, snow boots/shoes covering whole foot

*snow pants required for playing in snow

Under 20 degrees:

Winter coat, hat, mittens/gloves, snow pants/long pants, snow boots

*snow pants required for playing in the snow

GYM SHOES

Students are required to have gym shoes for physical education as a safety precaution.

SCHOOL MEALS (Policy 534)

The Royalton School District follows Minnesota's new Free Meals Program. According to state law, Royalton enrolled students in grades K-12 are provided TWO free meals per day, but are limited to ONE free breakfast and ONE free lunch. We are able to provide free breakfast and lunches to our students because we are a part of the National School Lunch program. Additional items must be paid for through student lunch accounts. For example: If a student brings a cold lunch but wants milk from the school, the student's meal account has to be charged for the price of the milk.

Royalton Public Schools has a computerized lunch tracking system. Students in K-12 will be issued an ID card and given a lunch number that will be computer monitored. When going through the food service line, the student will enter their lunch number. This process allows the district to get reimbursed for the cost of the lunch and/or breakfast from the state of Minnesota. You are encouraged to come and eat lunch with your student. All non-Royalton enrolled students must pay the price for a student lunch. Adult breakfast price is \$2.65; Adult lunch and non-enrolled Royalton students price is \$5.00. Breakfast is served in the cafeteria from 8:00 a.m. – 8:20 a.m.

MILK TICKETS

Milk tickets for milk breaks not during lunch can be purchased in the office at \$10.00 for 20 milks, grades 1-5 only. Kindergarten milk for break time is free.

RECESS EXPECTATION

If students are well enough to attend school, they are expected to go outside for recess, if we are able to be outside for recess.

CHAIN OF COMMUNICATION

Parents with concerns or questions are encouraged to directly contact teachers first. After contact with the teacher, if there is no resolution, contact the building principal. Bus concerns should be directed to the District Transportation Supervisor at (320) 584-4255.

MEDICAL INFORMATION

Royalton schools provide the service of a licensed nurse. The school nurse provides screening, referrals, teaching, and emergency care in the areas of health that enable students to be better learners. When the school nurse is unavailable, health services are shared among the school staff.

IMMUNIZATIONS - State of Minnesota law requires that every child attending school must have received a minimum number of doses of the following vaccinations: DPT, POLIO, MMR, Hepatitis B and chicken pox. The school must have a complete record of your child's immunization status when school starts in the fall.

Parents have the option of exempting a child from having the immunizations. Parents may choose to not have their child immunized, if it is their conscientiously held belief or if for medical reasons it would be harmful for the child to receive the vaccine. A legally notarized conscientious or medical exemption needs to be on file with the school. *If your child is not up to date with their immunizations when school begins, they will not be allowed to attend school until they are fully vaccinated.*

CHILD ABUSE/NEGLECT - Minnesota statute requires that any school personnel who suspects child abuse or neglect report it to law enforcement or the local social services agency. The report will be made in good faith. Follow up on such reports is the responsibility of social services and law enforcement.

VISION AND HEARING SCREENING - The Minnesota Department of Health recommends vision and hearing screenings. Screenings are conducted as follows: Vision screening done on K-5, 7, 10. Hearing screening is conducted in K-5, 8, and 11. This is not a requirement, but most schools do try to follow certain screening guidelines in their district to meet the needs of the students. As part of the school health program, the school nurse is responsible to see that the appropriate referrals or follow-up is done on those students who have identified concerns in these areas. A screening can also be done in these areas on a personal basis with a phone call requesting it.

LATEX – Latex balloons and gloves are prohibited from display and use in the Royalton Elementary School and Early Childhood Center.

DISPENSING OF MEDICATIONS – The school nurse or trained school personnel can dispense medications (prescription or over-the-counter) to students if the medication is accompanied by the correct completed forms. For prescription medication, this form requires a doctor's and parent's signature. For over-the-counter medication, only a parent's signature is required. Forms are available by calling the school or asking your healthcare provider. Acceptable over-the-counter medications are as follows: Tylenol (acetaminophen), Motrin (Ibuprofen, Advil). Cold/cough medicines and cough drops will be acceptable, however, only on a short term basis of 7 days. For short term medications such as antibiotics, the district recommends those to be given at home if possible. School personnel may not administer aspirin or other over-the-counter medications to students unless written doctor and parent permission is on file.

When a child is being administered medication by school staff, please send medication to be given in a container pharmacy-labeled for that medication. For your convenience, you may request a second container labeled for the medication, dosage, etc. from your pharmacist to be left with school staff. We cannot give medication that isn't properly labeled, does not have the appropriate signatures, or is expired. Medications should not be sent to and from school with children. The medication needs to be brought in by a parent or guardian. Those with allergies requiring an epinephrine pen must have one at school along with an allergy action plan from their physician. These rules must be followed in order to keep the children safe in our school.

For complete school district policy language, please reference policy 516 on the school district website.

HEALTH POLICIES AND PROCEDURES

The following school health policies have been compiled to provide a reference and foundation for health practices within the school setting.

Exclusions from School:

Students exhibiting one or more of the following symptoms should be kept home from school. If these symptoms appear while the child is in school, parents will be asked to take their child home.

1. Temperature over 100 degrees F. Do not give fever reducing medications if a fever is present and send your child to school when it lowers. If a fever is present the child should remain home until 24 hours after the fever is gone, WITHOUT the use of fever reducing medication such as acetaminophen/Tylenol or ibuprofen.
2. Vomiting - may return 24 hours after the last vomiting episode.
3. Diarrhea – may return 24 hours after the last diarrhea episode.
4. New or worsening suspicious rash/contagious disease (e.g. chicken pox/hand, foot and mouth disease/shingles).
5. Impetigo - may return 24 hours after starting medication.
6. Sore throat accompanied by a fever.
7. New or worsening cough accompanied by a fever.

*Head lice: Per MDH, treatment is recommended before returning to school.

*Pink Eye: Per MDH, there is NO exclusion from school for Pink Eye

Parents may also be contacted if, in the opinion of the school authority, a student is unable to return to class. In the event of an accident, the following procedure will be followed:

1. If immediate treatment is needed, 911 will be called.
2. If determined to be less serious, the teacher or school nurse will administer the necessary first aid, as well as contact the parent.

Parents are asked to provide us with the names of two other people they authorize to care for their children should we be unable to reach them.

Health Room Procedure:

When a student becomes ill or injured while in school, he/she will be taken to the nurse's room. The nurse, office staff or principal will assess the student's needs. In each case the student will receive care as needed. If the student is exhibiting any of the above symptoms, parents will be notified. If symptoms are minor, the student may stay in the nurse's room and rest up to 30 minutes. After that time a decision will be made as to whether the student is able to return to class or call the parents.

Absences:

The school secretary or school nurse will contact parents of students who are absent. They will inquire about your child's health status and care. All students under medical care and those with communicable diseases should be reported to the nurse for follow-up.

Physical Education Excuses:

In order to be excused from physical education for more than two days, the student must present a written order from the family physician. This should include a list of activities the child may participate in. When the student is allowed to participate again, another written statement from the doctor is required.

FORGOTTEN ITEMS

The following are the guidelines to follow when a student forgets an item in his or her classroom.

1. To get something from the classroom, the teacher must be available to assist in locating what was forgotten.
2. Teacher schedules vary. If the teacher is not available or has left for the day, you will have to wait until the next morning. Generally, teachers are not going to be available after 3:30pm. When necessary, teachers can be contacted by email or phone.
3. Please do not make requests of the custodians. The custodial staff has been instructed not to assist students and/or adults in retrieving classroom items. They have been told not to open classroom doors.

These guidelines are necessary because in some circumstances students have taken items that did not belong to them. Also, custodial staff schedules are busy, and we need to keep their interruptions to a minimum. If you feel there is a legitimate emergency in which you need help that cannot wait until the morning, you can contact Mr. Neumann. His office phone is 584-4163.

LOST AND FOUND

Many articles of clothing remain unclaimed at the close of the school year. Marking clothing may be helpful in cutting down on the number of unclaimed articles at the end of the year. There is a lost and found area located in the hallway by the cafeteria. Lost and found materials are also collected in the office.



BUS RULES

1. The bus driver is in full charge of the bus and the riders. Students must obey the driver promptly and without question. If a student has a question about instructions of the driver, he/she should ask that question of the school principal after he/she has complied with the driver's instructions.
2. Bus safety patrols may be assigned on each bus and riders will obey and respect the instructions of the patrols.
3. Riders will enter the bus only on designated stops and in single file order. Under no conditions will the emergency door be used for any but emergency exits. Anyone violating the above rule will be suspended from the bus until such time that the parent(s) meet with school authorities and assure compliance with the rules.
4. Riders must be on time at their designated stops. The bus cannot wait for those who are tardy.
5. Students shall not stand or play in the roadway while waiting for the bus.

6. Windows may be opened only with the permission of the driver. At no time shall windows be opened more than halfway. Arms, heads, or objects shall not be extended from the windows.
7. Students are to remain seated while the bus is in motion. Exit movement may begin only after the bus has come to a full stop.
8. When loading and leaving the bus, students are to observe the instructions of the bus driver or the bus safety patrol.
9. Students who are required to cross the street or road after leaving the bus shall pass in front of the vehicle, making certain that no traffic is approaching from either direction before crossing.
10. Students are to leave the bus only at their regular stations, unless they have a written permit slip from the parent(s) or teacher. The permission slip is to be presented to the driver by the rider.
11. Students may be assigned a seat in which he/she will be seated unless permission is given by the driver to change seating. Riders may not save a seat for another person. Each rider is entitled to one space only.
12. Books and personal belongings must be kept out of the aisle.
13. Classroom type conduct must be observed at all times. Rowdy behavior or indecent language is not acceptable.
14. Because of safety concerns, conversation with the driver and other possible distractions shall be kept to a minimum.
15. Students must have nothing in their possession that may cause injury to another person. Items such as sticks, any type of firearms, straps, or pins extending from clothing are not allowed.
16. Riders are to assist in keeping the bus clean by not leaving waste paper or other refuse in the vehicle.
17. Anyone damaging the bus will be assessed the full repair cost.
18. Drivers will report students guilty of violations of these conduct and safety rules. Failure to obey the driver or safety patrols will result in disciplinary action by your principal and may result in being prohibited from riding the school bus.
 1. Upon first report, the student will meet with the driver and school administration. Parents will receive a written report and possibly a phone call following the report.
 2. Upon the second offense, the student will meet with the driver and the principal and will be removed from the bus for two days. Parent attendance at this meeting is encouraged. A written report will be made to the parent(s) following this step.
 3. Upon third offense, the student will be removed from the bus for two weeks. Subsequent reported offenses will result in removal from the bus for the balance of the school year. Parents will receive written notification and when possible, phone follow-up on each of these steps.

FIELD TRIPS

Educational field trips are planned periodically to provide experiences correlated with classroom subjects. Students are required to have written permission from a parent or guardian prior to going on a field trip. Permission will not be granted over the telephone. All trips are chaperoned by school personnel.

There may be a request for additional parental/guardian chaperones to come on the field trip. Additional chaperones will be chosen by the grade level and those parents/guardians will be contacted directly from the grade level. The grade level will compile a list of chaperones and contact our Human Resources for background checks (these are valid for three years). Please do not contact Human Resources directly for a background check as this results in miscommunication.

For all additional Field Trip Chaperones, parents or legal guardians will only be considered. Grandparents, Aunts/Uncles, cousins, siblings will not be considered for chaperones.

STUDENT RESPECT OF FACULTY/STAFF

Students are expected to act respectfully to all staff members. If a student is verbally or physically abusive to a staff member, consequences may include after school detention, in-school suspension, out-of-school suspension, or expulsion.

SCHOOL PROPERTY

All educational needs from textbooks to playground equipment are furnished to the children to use while attending school. Any child who damages, loses, or defaces property belonging to the school will be held accountable.

CONSEQUENCES

1. If a student receives three minor reports in a quarter or a major report at any time, the student will need to visit with the principal.
2. REMINDER of correct rule and/or behavior
3. TIME OUT for attitude adjustment
4. LOSS OF PRIVILEGES
5. CONFERENCE - student, teacher, principal
6. CONFERENCE - student, teacher, principal, and parents
7. Consequences may include after school detention, in-school suspension, out-of-school suspension, or expulsion.

DRUG-FREE WORKPLACE/DRUG-FREE SCHOOL (Policy 418)

Possession or consumption of alcohol, drugs, and other illegal substances are strictly prohibited. Consequences may include after school detention, in-school suspension, out-of-school suspension, or expulsion.

Further and complete language on this policy can be found on the district's website

SPECIAL SERVICES

Special services are available at Royalton Elementary School and Early Childhood Center. These services include:

Title I (Grade 1 – 5 only)
Special Education/Preschool program
Speech Therapy
Developmental/Adapted Physical Ed.
Special Education Services

Parents will be notified if a child is recommended to receive any of these services and the program will be explained to each parent upon request. According to State and Federal law it is necessary that parents or guardians sign permission slips for their child to participate in Special Education Services.

SCHOOL RULES – PAWS MATRIX

	Classroom Setting	Cafeteria Setting	Restroom Setting	Playground Setting	Hallway Setting
P Personal Best	Try your best Be helpful Accept others Use please and thank you	Be polite to others Share a smile Sit with someone who needs a friend	Be considerate of others	Include others Try something new Have fun	Smile Greet others Be helpful Be considerate
A Act Responsibly	Follow directions Accept consequences Be on time Complete assignments	Return tray and silverware Throw garbage away Eat your own food Listen to adults	Go, Flush, Wash, Leave Clean up after yourself Use planned bathroom breaks	Line up when signal is given Follow directions Throw away trash and litter Put away equipment	Keep hallways clean Walk directly to your destination
W Work and Play Safely	Keep hands and feet to yourself Stay in assigned location Use supplies as intended	Walk Make healthy choices Keep hands and feet to yourself	Wash and dry hands Use property as intended	Know and follow playground rules and expectations Use equipment as intended Get help for self and others	Walk on the right Allow others space to move
S Show Respect	Raise your hand Use listening ears Use kind words Respect personal space	Use kind words Use a quiet voice Be patient when waiting Say please and thank you Follow directions given by adults	Keep bathroom clean Respect privacy of others Treat property with respect Use a quiet voice	Listen to adults Take care of the equipment Use kind words Take turns Be a good sport Solve problems with respect and fairness	Walk Hands and feet to yourself Use lockers appropriately and quietly Use a quiet voice Follow adult directions

TESTING

Students in Gr. 3-5 will be tested annually in reading and math with the Minnesota Comprehensive Assessments (MCAs). Grade 5 also takes the MCA science test. MCAs are typically administered in April and May.

Test results are shared with parents and kept in each student's cumulative file. Please contact the Elementary Principal if you have any questions. There is an Opt-Out for MCA tests for your child if you so choose. If that is something you would like to explore, please contact Nicole Koll at 320-584-4263.



PROGRESS REPORTS - PARENT/TEACHER CONFERENCES

Your child's progress will be reported to you by means of quarterly report cards and two Parent/Teacher/Student conferences. Parents may request additional conferences at any time by contacting the elementary office.

CUMULATIVE RECORDS

A cumulative record is kept for each student at Royalton Elementary School and at the Early Childhood Center for Kindergarten students. Upon completion of the fifth grade, student records are transferred to the High School. Any parent/guardian wishing to review their child's records may make a request through the elementary office.

CLOSINGS

In the event that weather conditions or other circumstances make it necessary to close school for all or part of the day, notice will be given over the following stations:

KCLD	104.7	FM	KNSI	1450	AM
WHMS	101.7	FM	WJON	1240	AM
KFML	94.1	FM	KLTF	960	AM
KCML	99.9	FM	WVAL	660	AM
WILD	98.9	FM			
WYRQ	92.1	FM			
WCCO-TV4					
KSTP -TV5					
KARE -TV11					

The School Reach system will attempt to be used to notify you of late starts and cancellations.

KINDERGARTEN

To be eligible to enter Kindergarten, a child must have reached the age of five years on or before September 1st of the year in which he/she enters Kindergarten. All children entering Kindergarten are required to produce a birth certificate and an updated immunization record. A physical examination is suggested, but it is not mandatory.

Kindergarten Information Night is held in the Spring for students who will enter Kindergarten the following school year. Parents meet with school personnel to get a preview of the various school programs.



HARASSMENT AND VIOLENCE (Policies 525 and 526)

The Royalton School District has a written policy that protects all children and adults from Religious, Racial, or Sexual Harassment and Violence. The complete policy in detail is available through the district office and/or school office. All suspected cases of Harassment or Violence should be reported to your building administrator. Consequences may include after school detention, in-school, out-of-school suspension, or expulsion.

REASONABLE FORCE

State law allows the use of reasonable force by a teacher, school employee, bus driver, or other agent of a school district when it is necessary under the circumstances to restrain a student or prevent bodily harm or death to another. This does not authorize corporal punishment.

NEWSLETTERS

A weekly newsletter from the elementary school will be emailed to parents at the end of each week highlighting some of the special activities at the school.

A district newsletter is sent to all residents to inform you of the activities in both the elementary and the high school. If you do not receive the district newsletter, contact the district office.

TREATS

Minnesota Department of Health regulations forbid the distribution of homemade treats in school. We suggest that you send treats, such as commercial bakery items, ice cream treats, wrapped treats, raisins, popcorn or fruit. Classroom parties are held at the discretion of each teacher. Please be aware that there are some dietary restrictions in classrooms including but not limited to nut allergies or other allergies.

VOLUNTEER PROGRAM

Royalton Elementary welcomes volunteers into our school to help with on campus events: parties, assist in classrooms, or to be of service with other tasks. If you would like to volunteer on a consistent basis, please first get in contact with your child's classroom teacher and secondly visit www.royaltonpublicschools.org/donate-volunteer to fill out a volunteer application and someone will be in contact with you. Please see our District Volunteer policy #451 at www.royaltonpublicschools.org/policies

VISITING SCHOOL (Policy 903)

Parents/guardians and community members are welcome to visit the schools. To ensure the safety of those in the school and to avoid disruption to the learning environment, all visitors must report directly to the main office upon entering the building, with the exception of events open to the public. All visitors will be required to sign in at the front desk of the main office and to wear a "visitor badge" while in the building during the school day. Visitors must have the approval of the principal before visiting a classroom during instructional time (see volunteer section above). An individual or group may be denied permission to visit a school or school property, or such permission may be revoked, if the visitor does not comply with school district procedures or if the visit is not in the best interests of the students, employee, or the school district.

Frequently, we have parents/guardians/grandparents come to eat lunch with their special student. We encourage this, however, food brought into the school is to only be consumed by the student and visitor. We have a wide range of dietary restrictions and there is a safety concern if food or treats are passed to other students.

If you would like to meet with a particular teacher about an individual or personal concern, contact the teacher and arrange a time to meet when the teacher does not have a scheduled class. Visitors to the elementary school, other than parents, are not permitted except in special circumstances, for example; a new student moving into the district. That visit must be pre-arranged in advance with the principal.

Students and teachers should immediately direct visitors, strangers, and vendors who enter the building to the school office.

YOUNGER BROTHERS, SISTERS, AND VISITING RELATIVES THAT ARE NOT ENROLLED STUDENTS ARE ROYALTON PUBLIC SCHOOLS ARE NOT TO ACCOMPANY YOUR STUDENT TO SCHOOL. We discourage this type of visit and ask for your cooperation.

ISD 485 SCHOOLS POLICY ON SMOKE/TOBACCO FREE ENVIRONMENT (Policy 419)

Smoking and use of tobacco products or nicotine delivering devices, such as but not limited to vape devices, shall be prohibited on school district property. This shall include school buildings, grounds, and school-owned vehicles. Possession and/or use of tobacco products or nicotine delivering devices by students on school property shall be prohibited. Possession or use of any type of tobacco product or nicotine delivering device by a student is not allowed at school, on school grounds, or at school sponsored activities.

(See District Tobacco-Free Environment, Possession and Use of Tobacco-Related Devices and Electronic Delivery Services policy 419 located on the District Website or contact the elementary office for a full description.)

- STUDENTS

Any violation of this policy by students will be referred to the building principal. The building principal reserves the right to modify consequences based on individual circumstances and student grade level.

- STAFF

Any violation will be referred to the appropriate supervisor. On the first offense, the employee will receive a verbal and written reprimand with a copy placed in the district file. On the second offense, the employee will be suspended for one day without pay and a written reprimand placed in the district file. Further violations will be subject to procedure of MINNESOTA STATUTE 125.12 (reason for termination), which will be considered insubordination.

- CITIZEN

Any violation of this policy by a citizen will be referred to an administrator or designee. On the first offense, the citizen will be asked to refrain from tobacco use. On the second offense the citizen will be asked to leave school property. A further violation will result in seeking law enforcement aid, and the offender will be banned from all school district activities for the remainder of the year.

COMMUNITY EDUCATION ELEMENTARY ACTIVITIES

Royalton Community Education in cooperation with the High School Athletic Department will be sponsoring after school and Saturday activities for elementary age students. Look for information in the Community Education section of the District Newsletter as to the what, when, where, and cost (if any) of participation.

PROMOTION/RETENTION POLICY

Children shall be developmentally placed at the grade level to which they are best adjusted academically, socially, and emotionally. The educational program shall provide for the continuous progress of children from grade to grade with children spending one year in each grade. Our objective is to assist in the prevention, identification, and positive intervention on behalf of children in our district.

WEAPONS AND HARMFUL ARTICLES POLICY (Policy 501)

Possession of a weapon (e.g. gun, knife, or other lethal objects) is not allowed at school, on school grounds, or at school sponsored activities. Toy weapons are also not permitted. Articles that are illegal, nuisances, or that may cause harm to others (e.g. laser pointers, fireworks, lighters, matches, explosives, ammunition, projectiles of any kind) are similarly prohibited. Weapon possession violations are extremely serious. Consequences may include after school detention, in-school suspension, out-of-school suspension, or expulsion.

(See District School Weapons policy 501 located on the District Website or contact the elementary office for a full description.)

SECTION 504 POLICY (Policy 521)

Section 504 of the Rehabilitation Act of 1973 prohibits discrimination against persons with a handicap in any program receiving federal financial assistance.

It is the policy of Royalton School District not to discriminate on the basis of handicap in admission or access to, or treatment or employment in, its programs and activities. Questions or concerns regarding this policy should be directed to the elementary school principal.

HAZING POLICY (Policy 413)

The purpose of this policy is to maintain a safe learning environment for students and staff that is free from hazing. Hazing activities of any type are inconsistent with the educational goals of the school district and are prohibited at all times.

"Hazing" means committing an act against a student, or coercing a student into committing an act, that creates a substantial risk of harm to a person, in order for the student to be initiated into or affiliated with a student organization, or for any other purpose. Consequences may include in-school suspension, out-of-school suspension, or expulsion.

(See District Harassment and Violence policy 413 located on the District website or contact the elementary office for a full description.)

BULLYING POLICY (Policy 514)

An act of bullying, by either an individual student or a group of students, is expressly prohibited on school district property or at school-related functions. This policy applies not only to students who directly engage in an act of bullying but also to students who, by their indirect behavior, condone or support another student's act of bullying. This policy also applies to any student whose conduct at any time or in any place constitutes bullying that interferes with or obstructs the mission or operations of the school district or the safety or welfare of the student, other students or employees.

See District Bullying Prohibition policy 514 located on the District website or contact the elementary office for a full description.

DISTRICT DISCIPLINE POLICY (Policy 506)

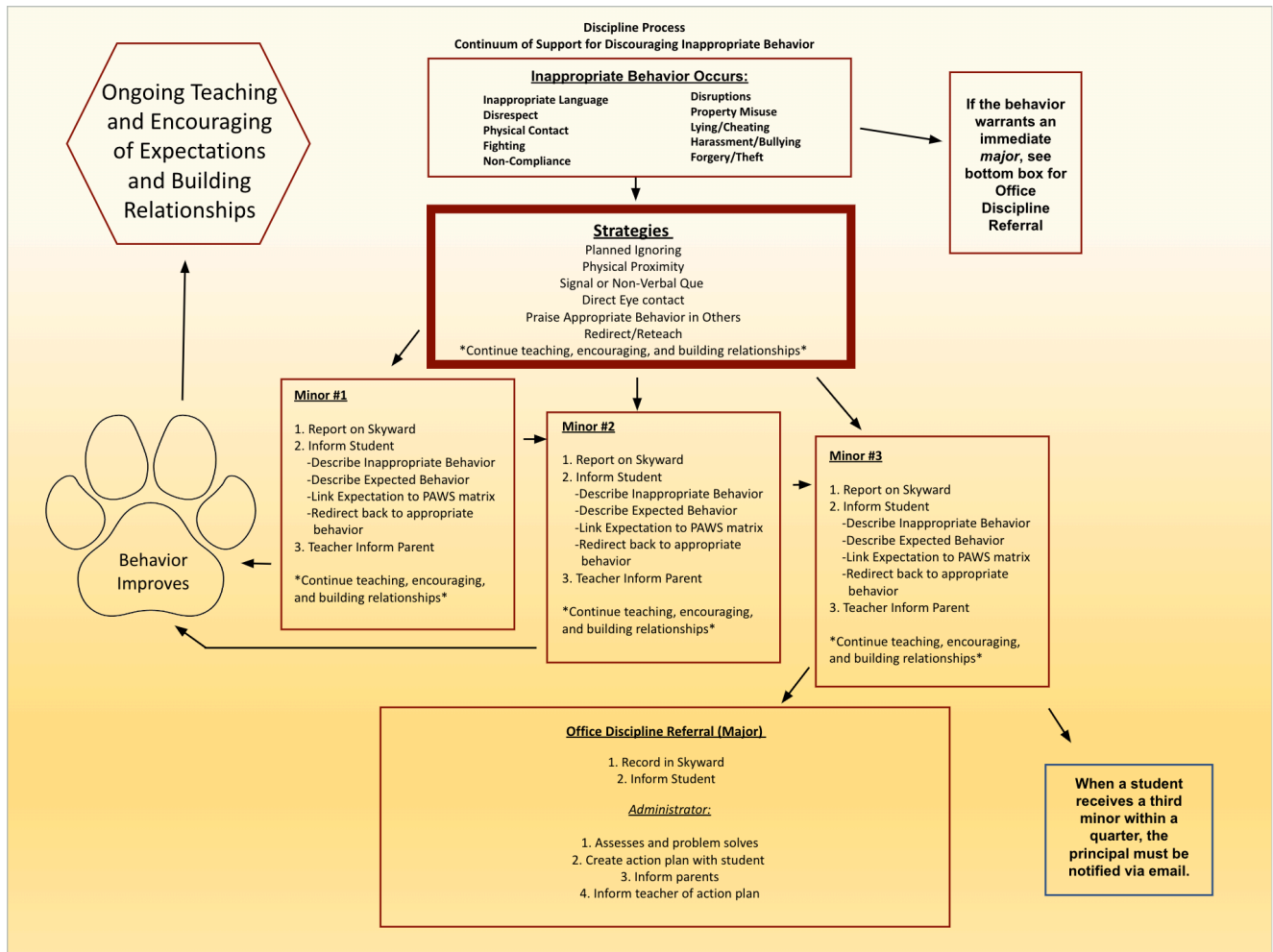
The discipline procedures contained in this student handbook are based upon School District Policy #506, Student Discipline. The school district will notify students and parents of the existence and contents of this policy in such manner as it deems appropriate. Copies of this discipline policy shall be made available to all students and parents at the commencement of each school year and to all new students and parents upon enrollment. The policy can be found on the school website and upon request in the Elementary Office as well as with the building principal.

It is the right of every teacher to teach and the right of every student to learn in an orderly environment. Rules are necessary for the day to run smoothly and ensure everyone's safety. Please use common sense in your actions and to treat others with kindness and respect.

The student code of conduct, behavior expectations, disciplinary procedures and actions, and student removal from class procedures and actions are located in School District Policy 506, Student Discipline.

Discipline

Misbehavior by one student can disrupt the learning process for many other students. In addition, students must learn to practice good safety habits, value academic honesty, respect the rights of others, and obey the law. For detailed information on the Student Code of Conduct and consequences for violations, see the complete Student Discipline Policy #506 in the appendix.



STAFF NOTIFICATION OF VIOLENT BEHAVIOR BY STUDENTS (POLICY 529)

In an effort to provide a safe school environment, the assigned classroom teacher and certain staff members should know whether a student to be placed in the classroom has a history of violent behavior. Specific teachers and staff members will be notified about the placement of students with a history of violent behavior as outlined in Royalton School District Policy 529

SUICIDE PREVENTION

Royalton Public Schools is committed to providing a safe learning environment for all stakeholders which includes providing mental health support for those that are in need. Use these resources and numbers if you or your student is in need of mental health support:

- Text: 988
- Call: 988
- Morrison County: 320-632-2951 or 800-269-1464
- Benton County: 320-253-5555 or 800-635-8008

TITLE IX (Policy 522)

Title IX is Federal legislation that prohibits Federal grants to schools or programs that discriminate on the basis of gender. The Royalton School District promotes gender equity and does not discriminate based on an individual's gender. Any student who believes he or she has been the victim of unlawful sex discrimination by a teacher, administrator or other school district personnel, or any person with knowledge or belief of conduct which may constitute unlawful sex discrimination toward a student should report the alleged acts immediately to an appropriate school district official. If you have a concern, please contact the elementary school principal.

(See District Title IX Sex Non-Discrimination Policy, Grievance Procedure and Process policy 522 located on the District website or contact the elementary office for a full description.)

Our Title IX Coordinator is Kaitlyn Arnzen and can be reached at kaitlyn.arnzen@isd485.org or 320-584-4257

Appendix

Policies Listed

Policies listed in this handbook are subject to change based on school board action. You will be notified if there are any changes to the below referenced policies

All Royalton Public Schools policies, in addition to the ones listed below, can be found in their entirety on our school website at:

<https://www.royaltonpublicschools.org/policies>

- **Harassment and Violence, Policy 413**
- **Drug-Free Workplace/Drug-Free Environment, Policy 418**
- **Tobacco-Free Environment, Policy 419**
- **School Weapons, Policy 501**
- **Student Dress and Appearance, Policy 504**
- **Student Attendance, Policy 503**
- **Distribution of Non-sponsored School Materials by Staff/Students, Policy #505**
- **Student Discipline, Policy 506**
- **Bullying Prevention, Policy 514**
- **Protection and Privacy of Student Records, Policy 515**
- **Student Surveys, Policy 520**
- **Title IX, Policy 522**
- **Internet Acceptable Use Policy, Policy 524**
- **Violence Prevention, Policy 525**
- **Hazing Prohibition, Policy 526**
- **Staff Notification of Violent Behavior by Students, Policy 529**
- **School Meals Policy, 534**
- **Visitors to School Buildings and Sites, Policy 903**

413 HARASSMENT AND VIOLENCE

I. PURPOSE

The purpose of this policy is to maintain a learning and working environment free from harassment and violence on the basis of race, color, creed, religion, national origin, sex, age, marital status, familial status, status with regard to public assistance, sexual orientation, or disability (Protected Class).

II. GENERAL STATEMENT OF POLICY

- A. The policy of the school district is to maintain a learning and working environment free from harassment and violence on the basis of Protected Class. The school district prohibits any form of harassment or violence on the basis of Protected Class.
- B. A violation of this policy occurs when any student, teacher, administrator, or other school district personnel harasses a student, teacher, administrator, or other school district personnel or group of students, teachers, administrators, or other school district personnel through conduct or communication based on a person's Protected Class, as defined by this policy. (For purposes of this policy, school district personnel include school board members, school employees, agents, volunteers, contractors, or persons subject to the supervision and control of the district.)
- C. A violation of this policy occurs when any student, teacher, administrator, or other school district personnel inflicts, threatens to inflict, or attempts to inflict violence upon any student, teacher, administrator, or other school district personnel or group of students, teachers, administrators, or other school district personnel based on a person's Protected Class.
- D. The school district will act to investigate all complaints, either formal or informal, verbal or written, of harassment or violence based on a person's Protected Class, and to discipline or take appropriate action against any student, teacher, administrator, or other school district personnel found to have violated this policy.

III. DEFINITIONS

- A. "Assault" is:
 - 1. an act done with intent to cause fear in another of immediate bodily harm or death;
 - 2. the intentional infliction of or attempt to inflict bodily harm upon another; or
 - 3. the threat to do bodily harm to another with present ability to carry out the threat.
- B. "Harassment" prohibited by this policy consists of physical or verbal conduct, including, but not limited to, electronic communications, relating to an individual's or group of individuals' race, color, creed, religion, national origin, sex, age, marital status, familial status, status with regard to public assistance, sexual orientation, including gender identity or expression, or disability, when the conduct:

1. has the purpose or effect of creating an intimidating, hostile, or offensive working or academic environment;
2. has the purpose or effect of substantially or unreasonably interfering with an individual's work or academic performance; or
3. otherwise adversely affects an individual's employment or academic opportunities.

[NOTE: In 2023, the Minnesota legislature amended the definition of "sexual orientation" in the Minnesota Human Rights Act as reflected in subpart 6 below.]

C. "Immediately" means as soon as possible but in no event longer than 24 hours.

D. Protected Classifications

1. "Disability" means, with respect to an individual who
 - a. has a physical sensory or mental impairment that materially limits one or more major life activities of such individual;
 - b. has a record of such an impairment;
 - c. is regarded as having such an impairment; or
 - d. has an impairment that is episodic or in remission and would materially limit a major life activity when active.
2. "Familial status" means the condition of one or more minors having legal status or custody with:
 - a. the minor's parent or parents or the minor's legal guardian or guardians; or
 - b. the designee of the parent or parents or guardian or guardians with the written permission of the parent or parents or guardian or guardians. Familial status also means residing with and caring for one or more individuals who lack the ability to meet essential requirements for physical health, safety, or self-care because the individual or individuals are unable to receive and evaluate information or make or communicate decisions. The protections afforded against harassment or discrimination on the basis of family status apply to any person who is pregnant or is in the process of securing legal custody of an individual who has not attained the age of majority.

[NOTE: The 2024 Minnesota legislature revised the definition of "familial status."]

3. "Marital status" means whether a person is single, married, remarried, divorced, separated, or a surviving spouse and, in employment cases, includes protection against harassment or discrimination on the basis of the identity, situation, actions, or beliefs of a spouse or former spouse.

4. "National origin" means the place of birth of an individual or of any of the individual's lineal ancestors.
5. "Sex" includes, but is not limited to, pregnancy, childbirth, and disabilities related to pregnancy or childbirth.
6. "Sexual orientation" means to whom someone is, or is perceived of as being, emotionally, physically, or sexually attracted to based on sex or gender identity. A person may be attracted to men, women, both, neither, or to people who are genderqueer, androgynous, or have other gender identities.

[NOTE: The 2023 Minnesota legislature redefined 'sexual orientation' in the Minnesota Human Rights Act.]

7. "Status with regard to public assistance" means the condition of being a recipient of federal, state, or local assistance, including medical assistance, or of being a tenant receiving federal, state, or local subsidies, including rental assistance or rent supplements.
- E. "Remedial response" means a measure to stop and correct acts of harassment or violence, prevent acts of harassment or violence from recurring, and protect, support, and intervene on behalf of a student who is the target or victim of acts of harassment or violence.

F. Sexual Harassment

1. Sexual harassment includes unwelcome sexual advances, requests for sexual favors, sexually motivated physical conduct, or other verbal or physical conduct or communication of a sexual nature when:
 - a. submission to that conduct or communication is made a term or condition, either explicitly or implicitly, of obtaining employment or an education; or
 - b. submission to or rejection of that conduct or communication by an individual is used as a factor in decisions affecting that individual's employment or education; or
 - c. that conduct or communication has the purpose or effect of substantially interfering with an individual's employment or education, or creating an intimidating, hostile, or offensive employment or educational environment.
2. Sexual harassment may include, but is not limited to:
 - a. unwelcome verbal harassment or abuse;
 - b. unwelcome pressure for sexual activity;
 - c. unwelcome, sexually motivated, or inappropriate patting, pinching, or physical contact, other than necessary restraint of student(s) by teachers, administrators, or other school district personnel to avoid physical harm to persons or property;
 - d. unwelcome sexual behavior or words, including demands for sexual

favours, accompanied by implied or overt threats concerning an individual's employment or educational status;

- e. unwelcome sexual behavior or words, including demands for sexual favors, accompanied by implied or overt promises of preferential treatment with regard to an individual's employment or educational status; or
- f. unwelcome behavior or words directed at an individual because of sexual orientation, including gender identity or expression.

G. Sexual Violence

- 1. Sexual violence is a physical act of aggression or force or the threat thereof that involves the touching of another's intimate parts or forcing a person to touch any person's intimate parts. Intimate parts, as defined in Minnesota Statutes, section 609.341, includes the primary genital area, groin, inner thigh, buttocks, or breast, as well as the clothing covering these areas.
- 2. Sexual violence may include, but is not limited to:
 - a. touching, patting, grabbing, or pinching another person's intimate parts
 - b. coercing, forcing, or attempting to coerce or force the touching of anyone's intimate parts;
 - c. coercing, forcing, or attempting to coerce or force sexual intercourse or a sexual act on another; or
 - d. threatening to force or coerce sexual acts, including the touching of intimate parts or intercourse, on another.

H. Violence

Violence prohibited by this policy is a physical act of aggression or assault upon another or group of individuals because of, or in a manner reasonably related to an individual's Protected Class.

IV. REPORTING PROCEDURES

- A. Any person who believes he or she has been the target or victim of harassment or violence on the basis of Protected Class by a student, teacher, administrator, or other school district personnel, or any person with knowledge or belief of conduct which may constitute harassment or violence prohibited by this policy toward a student, teacher, administrator, or other school district personnel or group of students, teachers, administrators, or other school district personnel should report the alleged acts immediately to an appropriate school district official designated by this policy. A person may report conduct that may constitute harassment or violence anonymously. However, the school district may not rely solely on an anonymous report to determine discipline or other remedial responses.
- B. The school district encourages the reporting party or complainant to use the report form available from the principal or building supervisor of each building or available from the school district office, but oral reports shall be considered complaints as well.
- C. Nothing in this policy shall prevent any person from reporting harassment or violence

directly to a school district human rights officer or to the superintendent. If the complaint involves the building report taker, the complaint shall be made or filed directly with the superintendent or the school district human rights officer by the reporting party or complainant.

D. In Each School Building

The building principal, the principal's designee, or the building supervisor (hereinafter the "building report taker") is the person responsible for receiving oral or written reports of harassment or violence prohibited by this policy at the building level. Any adult school district personnel who receives a report of harassment or violence prohibited by this policy shall inform the building report taker immediately. If the complaint involves the building report taker, the complaint shall be made or filed directly with the superintendent or the school district human rights officer by the reporting party or complainant. The building report taker shall ensure that this policy and its procedures, practices, consequences, and sanctions are fairly and fully implemented and shall serve as a primary contact on policy and procedural matters.

- E. A teacher, school administrator, volunteer, contractor, or other school employee shall be particularly alert to possible situations, circumstances, or events that might include acts of harassment or violence. Any such person who witnesses, observes, receives a report of, or has other knowledge or belief of conduct that may constitute harassment or violence shall make reasonable efforts to address and resolve the harassment or violence and shall inform the building report taker immediately. School district personnel who fail to inform the building report taker of conduct that may constitute harassment or violence or who fail to make reasonable efforts to address and resolve the harassment or violence in a timely manner may be subject to disciplinary action.

- F. Upon receipt of a report, the building report taker must notify the school district human rights officer immediately, without screening or investigating the report. The building report taker may request, but may not insist upon, a written complaint. A written statement of the facts alleged will be forwarded as soon as practicable by the building report taker to the human rights officer. If the report was given verbally, the building report taker shall personally reduce it to written form within 24 hours and forward it to the human rights officer. Failure to forward any harassment or violence report or complaint as provided herein may result in disciplinary action against the building report taker.

G. In the District

The school board hereby designates Activities Director as the school district human rights officer(s) to receive reports or complaints of harassment or violence prohibited by this policy. If the complaint involves a human rights officer, the complaint shall be filed directly with the superintendent.¹

- H. The school district shall conspicuously post the name of the human rights officer(s), including mailing addresses and telephone numbers.
- I. Submission of a good faith complaint or report of harassment or violence prohibited by this policy will not affect the complainant or reporter's future employment, grades, work assignments, or educational or work environment.

¹ In some school districts the superintendent may be the human rights officer. If so, an alternative individual should be designated by the school board.

- J. Use of formal reporting forms is not mandatory.
- K. Reports of harassment or violence prohibited by this policy are classified as private educational and/or personnel data and/or confidential investigative data and will not be disclosed except as permitted by law.
- L. The school district will respect the privacy of the complainant(s), the individual(s) against whom the complaint is filed, and the witnesses as much as possible, consistent with the school district's legal obligations to investigate, to take appropriate action, and to comply with any discovery or disclosure obligations.
- M. Retaliation against a victim, good faith reporter, or a witness of violence or harassment is prohibited.
- N. False accusations or reports of violence or harassment against another person are prohibited.
- O. A person who engages in an act of violence or harassment, reprisal, retaliation, or false reporting of violence or harassment, or permits, condones, or tolerates violence or harassment shall be subject to discipline or other remedial responses for that act in accordance with the school district's policies and procedures.

Consequences for students who commit, or are a party to, prohibited acts of violence or harassment or who engage in reprisal or intentional false reporting may range from remedial responses or positive behavioral interventions up to and including suspension and/or expulsion.

Consequences for employees who permit, condone, or tolerate violence or harassment or engage in an act of reprisal or intentional false reporting of violence or harassment may result in disciplinary action up to and including termination or discharge.

Consequences for other individuals engaging in prohibited acts of violence or harassment may include, but not be limited to, exclusion from school district property and events and/or termination of services and/or contracts.

V. INVESTIGATION

- A. By authority of the school district, the human rights officer, within three (3) days of the receipt of a report or complaint alleging harassment or violence prohibited by this policy, shall undertake or authorize an investigation. The investigation may be conducted by school district officials or by a third party designated by the school district.
- B. The investigation may consist of personal interviews with the complainant, the individual(s) against whom the complaint is filed, and others who may have knowledge of the alleged incident(s) or circumstances giving rise to the complaint. The investigation may also consist of any other methods and documents deemed pertinent by the investigator.
- C. In determining whether alleged conduct constitutes a violation of this policy, the school district should consider the surrounding circumstances, the nature of the behavior, past incidents or past or continuing patterns of behavior, the relationships between the parties involved, and the context in which the alleged incidents occurred. Whether a particular action or incident constitutes a violation of this policy requires a determination based on all the facts and surrounding circumstances.

- D. In addition, the school district may take immediate steps, at its discretion, to protect the target or victim, the complainant, and students, teachers, administrators, or other school district personnel pending completion of an investigation of alleged harassment or violence prohibited by this policy.
- E. The alleged perpetrator of the act(s) of harassment or violence shall be allowed the opportunity to present a defense during the investigation or prior to the imposition of discipline or other remedial responses.
- F. The investigation will be completed as soon as practicable. The school district human rights officer shall make a written report to the superintendent upon completion of the investigation. If the complaint involves the superintendent, the report may be filed directly with the school board. The report shall include a determination of whether the allegations have been substantiated as factual and whether they appear to be violations of this policy.

VI. SCHOOL DISTRICT ACTION

- A. Upon completion of an investigation that determines a violation of this policy has occurred, the school district will take appropriate action. Such action may include, but is not limited to, warning, suspension, exclusion, expulsion, transfer, remediation, termination, or discharge. Disciplinary consequences will be sufficiently severe to try to deter violations and to appropriately discipline prohibited behavior. School district action taken for violation of this policy will be consistent with requirements of applicable collective bargaining agreements, Minnesota and federal law, and applicable school district policies and regulations.
- B. The school district is not authorized to disclose to a victim private educational or personnel data regarding an alleged perpetrator who is a student or employee of the school district. School officials will notify the targets or victims and alleged perpetrators of harassment or violence, the parent(s) or guardian(s) of targets or victims of harassment or violence and the parent(s) or guardian(s) of alleged perpetrators of harassment or violence who have been involved in a reported and confirmed harassment or violence incident of the remedial or disciplinary action taken, to the extent permitted by law.
- C. In order to prevent or respond to acts of harassment or violence committed by or directed against a child with a disability, the school district shall, where determined appropriate by the child's individualized education program (IEP) or Section 504 team, allow the child's IEP or Section 504 plan to be drafted to address the skills and proficiencies the child needs as a result of the child's disability to allow the child to respond to or not to engage in acts of harassment or violence.

VII. RETALIATION OR REPRISAL

The school district will discipline or take appropriate action against any student, teacher, administrator, or other school district personnel who commits an act of reprisal or who retaliates against any person who asserts, alleges, or makes a good faith report of alleged harassment or violence prohibited by this policy, who testifies, assists, or participates in an investigation of retaliation or alleged harassment or violence, or who testifies, assists, or participates in a proceeding or hearing relating to such harassment or violence. Retaliation includes, but is not limited to, any form of intimidation, reprisal, harassment, or intentional disparate treatment. Disciplinary consequences will be sufficiently severe to deter violations and to appropriately discipline the individual(s) who engaged in the harassment or violence. Remedial responses to the harassment or violence shall be tailored to the particular incident and nature of the conduct.

VIII. RIGHT TO ALTERNATIVE COMPLAINT PROCEDURES

These procedures do not deny the right of any individual to pursue other avenues of recourse which may include filing charges with the Minnesota Department of Human Rights or another state or federal agency, initiating civil action, or seeking redress under state criminal statutes and/or federal law.

IX. HARASSMENT OR VIOLENCE AS ABUSE

- A. Under certain circumstances, alleged harassment or violence may also be possible abuse under Minnesota law. If so, the duties of mandatory reporting under Minnesota Statutes, chapter 260E may be applicable.
- B. Nothing in this policy will prohibit the school district from taking immediate action to protect victims of alleged harassment, violence, or abuse.

X. DISSEMINATION OF POLICY AND TRAINING

- A. This policy shall be conspicuously posted throughout each school building in areas accessible to students and staff members.
- B. This policy shall be given to each school district employee and independent contractor who regularly interacts with students at the time of initial employment with the school district.
- C. This policy shall appear in the student handbook.
- D. The school district will develop a method of discussing this policy with students and employees.
- E. The school district may implement violence prevention and character development education programs to prevent and reduce policy violations. Such programs may offer instruction on character education including, but not limited to, character qualities such as attentiveness, truthfulness, respect for authority, diligence, gratefulness, self-discipline, patience, forgiveness, respect for others, peacemaking, resourcefulness, and/or sexual abuse prevention.
- F. This policy shall be reviewed at least annually for compliance with state and federal law.

Legal References: Minn. Stat. § 120B.232 (Character Development Education)
Minn. Stat. § 120B.234 (Child Sexual Abuse Prevention Education)
Minn. Stat. § 121A.03, Subd. 2 (Sexual, Religious, and Racial Harassment and Violence Policy)
Minn. Stat. § 121A.031 (School Student Bullying Policy)
Minn. Stat. Ch. 363A (Minnesota Human Rights Act)
Minn. Stat. § 609.341 (Definitions)
Minn. Stat. Ch. 260E (Reporting of Maltreatment of Minors)
20 U.S.C. §§ 1681-1688 (Title IX of the Education Amendments of 1972)
29 U.S.C. § 621 *et seq.* (Age Discrimination in Employment Act)
29 U.S.C. § 794 (Section 504 of the Rehabilitation Act of 1973)
42 U.S.C. § 1983 (Civil Action for Deprivation of Rights)
42 U.S.C. § 2000d *et seq.* (Title VI of the Civil Rights Act of 1964)
42 U.S.C. § 2000e *et seq.* (Title VII of the Civil Rights Act)
42 U.S.C. § 12101 *et seq.* (Americans with Disabilities Act)

Cross References: Royalton Policy 102 (Equal Educational Opportunity)
 Royalton Policy 401 (Equal Employment Opportunity)
 Royalton Policy 402 (Disability Nondiscrimination Policy)
 Royalton Policy 406 (Public and Private Personnel Data)
 Royalton Policy 414 (Mandated Reporting of Child Neglect or Physical or Sexual Abuse)
 Royalton Policy 415 (Mandated Reporting of Maltreatment of Vulnerable Adults)
 Royalton Policy 506 (Student Discipline)
 Royalton Policy 514 (Bullying Prohibition Policy)
 Royalton Policy 515 (Protection and Privacy of Pupil Records)
 Royalton Policy 521 (Student Disability Nondiscrimination)
 Royalton Policy 522 (Title IX Sex Nondiscrimination, Grievance Procedures and Process)
 Royalton Policy 524 (Internet Acceptable Use and Safety Policy)
 Royalton Policy 525 (Violence Prevention)
 Royalton Policy 526 (Hazing Prohibition)



**ROYALTON PUBLIC SCHOOL DISTRICT #485
HARASSMENT, VIOLENCE & HAZING REPORT FORM**



General Statement of Policy Prohibiting Harassment, Violence, and Hazing

ISD #485 maintains a firm policy prohibiting all forms of discrimination. Harassment or violence against students or employees or groups of students or employees on the basis of race, color, creed, religion, national origin, sex, age, marital status, familial status, status with regard to public assistance, sexual orientation, including gender identity and expression, or disability is strictly prohibited. All persons are to be treated with respect and dignity. Harassment or violence on the basis of race, color, creed, religion, national origin, sex, age, marital status, familial status, status with regard to public assistance, sexual orientation, including gender identity and expression, or disability by any pupil, teacher, administrator, or other school personnel, which create an intimidating, hostile, or offensive environment will not be tolerated under any circumstances.

Complainant _____

Home Address _____

Work Address _____

Home Phone _____ Work Phone _____

Date of Alleged Incident(s) _____

Basis of Alleged Harassment/Violence - circle as appropriate: race \ color \ creed \ religion \ national origin \ sex \ age \ marital status \ familial status \ status with regard to public assistance \ sexual orientation, including gender identity and expression \ disability

Name of person you believe harassed or was violent toward you or another person or group.

If the alleged harassment or violence was toward another person or group, identify that person or group. _____

Describe the incident(s) as clearly as possible, including such things as: what force, if any, was used; any verbal statements (i.e., threats, requests, demands, etc.); what, if any, physical contact was involved; etc. (Attach additional pages if necessary.) _____



ROYALTON PUBLIC SCHOOL DISTRICT #485
HARASSMENT, VIOLENCE & HAZING REPORT FORM



Where and when did the incident(s) occur? _____

List any witnesses that were present _____

This complaint is filed based on my honest belief that _____ has harassed or has been violent to me or to another person or group. I hereby certify that the information I have provided in this complaint is true, correct, and complete to the best of my knowledge and belief.

(Complainant Signature)

(Date)

Received by _____

(Date)

505 DISTRIBUTION OF NONSCHOOL-SPONSORED MATERIALS ON SCHOOL PREMISES BY STUDENTS AND EMPLOYEES

I. PURPOSE

The purpose of this policy is to protect the exercise of students' and employees' free speech rights, taking into consideration the educational objectives and responsibilities of the school district.

II. GENERAL STATEMENT OF POLICY

- A. The school district recognizes that students and employees have the right to express themselves on school property. This protection includes the right to distribute, at a reasonable time and place and in a reasonable manner, nonschool-sponsored material.
- B. To protect First Amendment rights, while at the same time preserving the integrity of the educational objectives and responsibilities of the school district, the school board adopts the following regulations and procedures regarding distribution of nonschool-sponsored material on school property and at school activities.

III. DEFINITIONS

- A. "Distribute" or "Distribution" means circulation or dissemination of material by means of handing out free copies, selling or offering copies for sale, accepting donations for copies, posting or displaying material, or placing material in internal staff or student mailboxes.
- B. "Nonschool-sponsored material" or "unofficial material" includes all materials or objects intended for distribution, except school newspapers, employee newsletters, literary magazines, yearbooks, and other publications funded and/or sponsored or authorized by the school. Examples of nonschool-sponsored materials include, but are not limited to, leaflets, brochures, buttons, badges, flyers, petitions, posters, and underground newspapers whether written by students or employees or others, and tangible objects.
- C. "Obscene to minors" means:
 - 1. The average person, applying contemporary community standards, would find that the material, taken as a whole, appeals to the prurient interest of minors of the age to whom distribution is requested;
 - 2. The material depicts or describes, in a manner that is patently offensive to prevailing standards in the adult community concerning how such conduct should be presented to minors of the age to whom distribution is requested, sexual conduct such as intimate sexual acts (normal or perverted), masturbation, excretory functions, or lewd exhibition of the genitals; and
 - 3. The material, taken as a whole, lacks serious literary, artistic, political, or scientific value for minors.
- D. "Minor" means any person under the age of eighteen (18).

- E. "Material and substantial disruption" of a normal school activity means:
1. Where the normal school activity is an educational program of the district for which student attendance is compulsory, "material and substantial disruption" is defined as any disruption which interferes with or impedes the implementation of that program.
 2. Where the normal school activity is voluntary in nature (including school athletic events, school plays and concerts, and lunch periods) "material and substantial disruption" is defined as student rioting, unlawful seizures of property, conduct inappropriate to the event, participation in a school boycott, demonstration, sit-in, stand-in, walk-out, or other related forms of activity.

In order for expression to be considered disruptive, specific facts must exist upon which the likelihood of disruption can be forecast including past experience in the school, current events influencing student activities and behavior, and instances of actual or threatened disruption relating to the written material in question.

- F. "School activities" means any activity sponsored by the school including, but not limited to, classroom work, library activities, physical education classes, official assemblies and other similar gatherings, school athletic contests, band concerts, school plays and other theatrical productions, and in-school lunch periods.
- G. "Libelous" is a false and unprivileged statement about a specific individual that tends to harm the individual's reputation or to lower that individual in the esteem of the community.

IV. GUIDELINES

- A. Students and employees of the school district have the right to distribute, at reasonable times and places as set forth in this policy, and in a reasonable manner, nonschool-sponsored material.
- B. Requests for distribution of nonschool-sponsored material will be reviewed by the administration on a case-by-case basis. However, distribution of the materials listed below is always prohibited. Material is prohibited that:
1. is obscene to minors;
 2. is libelous or slanderous;
 3. is pervasively indecent or vulgar or contains any indecent or vulgar language or representations, with a determination made as to the appropriateness of the material for the age level of students to which it is intended;
 4. advertises or promotes any product or service not permitted to minors by law;
 5. advocates violence or other illegal conduct;
 6. constitutes insulting or fighting words, the very expression of which injures or harasses other people (e.g., threats of violence, defamation of character or of a person's race, religious, or ethnic origin);
 7. presents a clear and present likelihood that, either because of its content or

the manner of distribution, it will cause a material and substantial disruption of the proper and orderly operation and discipline of the school or school activities, will cause the commission of unlawful acts or the violation of lawful school regulations.

- C. Distribution by students and employees of nonschool-sponsored materials on school district property are subject to reasonable time, place, and manner restrictions set forth below. In making decisions regarding the time, place, and manner of distribution, the administration will consider factors including, but not limited to, the following:
 - 1. whether the material is educationally related;
 - 2. the extent to which distribution is likely to cause disruption of or interference with the school district's educational objectives, discipline, or school activities;
 - 3. whether the materials can be distributed from the office or other isolated location so as to minimize disruption of traffic flow in hallways;
 - 4. the quantity or size of materials to be distributed;
 - 5. whether distribution would require assignment of school district staff, use of school district equipment, or other resources;
 - 6. whether distribution would require that nonschool persons be present on the school grounds;
 - 7. whether the materials are a solicitation for goods or services not requested by the recipients.

V. TIME, PLACE, AND MANNER OF DISTRIBUTION

- A. No nonschool-sponsored material shall be distributed during and at the place of a normal school activity if it is reasonably likely to cause a material and substantial disruption of that activity.
- B. Distribution of nonschool-sponsored material is prohibited when it blocks the safe flow of traffic within corridors and entrance ways of the school, and school parking lots. Distribution shall not impede entrance to or exit from school premises in any way.
- C. No one shall coerce a student or staff member to accept any publication.
- D. The time, place, and manner of distribution will be solely within the discretion of the administration, consistent with the provisions of this policy.

VI. PROCEDURES

- A. Any student or employee wishing to distribute (as defined in this policy) nonschool-sponsored material must first submit for approval a copy of the material to the principal at least 24 hours in advance of desired distribution time, together with the following information:
 - 1. Name and phone number of the person submitting the request and, if a student, the room number of his or her first-period class.

2. Date(s) and time(s) of day intended for distribution.
 3. Location where material will be distributed.
 4. If material is intended for students, the grade(s) of students to whom the distribution is intended.
- B. Within 5 business days, the principal will review the request and render a decision. In the event that permission to distribute the material is denied or limited, the person submitting the request should be informed in writing of the reasons for the denial or limitation.
 - C. If the person submitting the request does not receive a response within 5 business days, the person shall contact the office to verify that the lack of response was not due to an inability to locate the person.
 - D. If the person is dissatisfied with the decision of the principal, the person may submit a written request for appeal to the superintendent. If the person does not receive a response within 5 business days (not counting Saturdays, Sundays, and holidays) of submitting the appeal, the person shall contact the office of the superintendent to verify that the lack of response is not due to an inability to locate the person.
 - E. Permission or denial of permission to distribute material does not imply approval or disapproval of its contents by either the school, the administration of the school, the school board, or the individual reviewing the material submitted.

VII. DISCIPLINARY ACTION

- A. Distribution by any student of nonschool-sponsored material prohibited herein or in violation of the provisions of time, place, and manner of distribution as described above will be halted and disciplinary action will be taken in accordance with the school district's Student Discipline Policy #506.
- B. Distribution by any employee of nonschool-sponsored material prohibited herein or in violation of the provisions of time, place, and manner of distribution as described above will be halted and appropriate disciplinary action will be taken, in accordance with any individual contract, collective bargaining agreement, school district policies and procedures, and/or governing statute.
- C. Any other party violating this policy will be requested to leave the school property immediately and, if necessary, the police will be called.

VIII. NOTICE OF POLICY TO STUDENTS AND EMPLOYEES

A copy of this policy will be published in student handbooks and posted in school buildings.

IX. IMPLEMENTATION

The school district administration may develop any additional guidelines and procedures necessary to implement this policy for submission to the school board for approval. Upon approval by the school board, such guidelines and procedures shall be an addendum to this policy.

Legal References: U. S. Const., amend. I

Hazelwood School District v. Kuhlmeier, 484 U.S. 260 (1988)
Bethel Sch. Dist. No. 403 v. Fraser, 478 U.S. 675 (1986)
Tinker v. Des Moines Indep. Sch. Dist., 393 U.S. 503 (1969)
Bystrom v. Fridley High School, 822 F.2d 747 (8th Cir. 1987)
Roark v. South Iron R-1 School Dist., 573 F.3d 556 (8th Cir. 2009)
Victory Through Jesus Sports Ministry Foundation v. Lee's Summit R-7 School Dist., 640 F.3d 329 (8th Cir. 2011), cert. denied 565 U.S. 1036 (2011)

Cross References: MSBA/MASA Model Policy 403 (Discipline, Suspension, and Dismissal of School District Employees)
MSBA/MASA Model Policy 506 (Student Discipline)
MSBA/MASA Model Policy 512 (School-Sponsored Student Publications)
MSBA/MASA Model Policy 904 (Distribution of Materials on School District Property by Nonschool Persons)

Adopted: December 11, 2006

MSBA/MASA Model Policy 506

Orig. 1995

Revised: May 23, 2022

Rev. July 2025

506 STUDENT DISCIPLINE

I. PURPOSE

The purpose of this policy is to ensure that students are aware of and comply with the school district's expectations for student conduct. Such compliance will enhance the school district's ability to maintain discipline and ensure that there is no interference with the educational process. The school district will take appropriate disciplinary action when students fail to adhere to the Code of Student Conduct established by this policy.

II. GENERAL STATEMENT OF POLICY

The school board recognizes that individual responsibility and mutual respect are essential components of the educational process. The school board further recognizes that nurturing the maturity of each student is of primary importance and is closely linked with the balance that must be maintained between authority and self-discipline as the individual progresses from a child's dependence on authority to the more mature behavior of self-control.

All students are entitled to learn and develop in a setting which promotes respect of self, others, and property. Proper positive discipline can only result from an environment which provides options and stresses student self-direction, decision-making, and responsibility. Schools can function effectively only with internal discipline based on mutual understanding of rights and responsibilities.

Students must conduct themselves in an appropriate manner that maintains a climate in which learning can take place. Overall decorum affects student attitudes and influences student behavior. Proper student conduct is necessary to facilitate the education process and to create an atmosphere conducive to high student achievement.

Although this policy emphasizes the development of self-discipline, it is recognized that there are instances when it will be necessary to administer disciplinary measures. The position of the school district is that a fair and equitable district-wide student discipline policy will contribute to the quality of the student's educational experience. This discipline policy is adopted in accordance with and subject to the Minnesota Pupil Fair Dismissal Act, Minnesota Statutes, sections 121A.40-121A.56.

In view of the foregoing and in accordance with Minnesota Statutes, section 121A.55, the school board, with the participation of school district administrators, teachers, employees, students, parents, community members, and such other individuals and organizations as appropriate, has developed this policy which governs student conduct and applies to all students of the school district.

III. DEFINITIONS

- A. "Nonexclusionary disciplinary policies and practices" means policies and practices that are alternatives to dismissing a pupil from school, including but not limited to evidence-based positive behavior interventions and supports, social and emotional services, school-linked mental health services, counseling services, social work services, academic screening for Title 1 services or reading interventions, and alternative

education services. Nonexclusionary disciplinary policies and practices include but are not limited to the policies and practices under Minnesota Statutes, sections 120B.12; 121A.575, clauses (1) and (2); 121A.031, subdivision 4, paragraph (a), clause (1); 121A.61, subdivision 3, paragraph (r); and 122A.627, clause (3).

- B. "Pupil withdrawal agreement" means a verbal or written agreement between a school administrator or district administrator and a pupil's parent to withdraw a student from the school district to avoid expulsion or exclusion dismissal proceedings. The duration of the withdrawal agreement cannot be for more than a 12-month period.

IV. POLICY

- A. The school board must establish uniform criteria for dismissal and adopt written policies and rules to effectuate the purposes of the Minnesota Pupil Fair Dismissal Act. The policies must include nonexclusionary disciplinary policies and practices consistent with Minnesota Statutes, section 121A.41, subdivision 12, and must emphasize preventing dismissals through early detection of problems. The policies must be designed to address students' inappropriate behavior from recurring.
- B. The policies must recognize the continuing responsibility of the school for the education of the pupil during the dismissal period.
- C. The school is responsible for ensuring that alternative educational services, if the pupil wishes to take advantage of them, must be adequate to allow the pupil to make progress toward meeting the graduation standards adopted under Minnesota Statutes, section 120B.02 and help prepare the pupil for readmission in accordance with section Minnesota Statutes, section 121A.46, subdivision 5.
- D. For expulsion and exclusion dismissals and pupil withdrawal agreements as defined in Minnesota Statutes, section 121A.41, subdivision 13:
 - 1. for a pupil who remains enrolled in the school district or is awaiting enrollment in a new district, the school district's continuing responsibility includes reviewing the pupil's schoolwork and grades on a quarterly basis to ensure the pupil is on track for readmission with the pupil's peers. The school district must communicate on a regular basis with the pupil's parent or guardian to ensure that the pupil is completing the work assigned through the alternative educational services as defined in Minnesota Statutes, section 121A.41, subdivision 11. These services are required until the pupil enrolls in another school or returns to the same school;
 - 2. a pupil receiving school-based or school-linked mental health services in the school district under Minnesota Statutes, section 245.4889 continues to be eligible for those services until the pupil is enrolled in a new district; and
 - 3. the school district must provide to the pupil's parent or guardian information on accessing mental health services, including any free or sliding fee providers in the community. The information must also be posted on the school district website.

V. AREAS OF RESPONSIBILITY

- A. The School Board. The school board holds all school personnel responsible for the maintenance of order within the school district and supports all personnel acting within the framework of this discipline policy.

- B. Superintendent. The superintendent shall establish guidelines and directives to carry out this policy, hold all school personnel, students, and parents responsible for conforming to this policy, and support all school personnel performing their duties within the framework of this policy. The superintendent shall also establish guidelines and directives for using the services of appropriate agencies for assisting students and parents. Any guidelines or directives established to implement this policy shall be submitted to the school board for approval and shall be attached as an addendum to this policy.
- C. Principal. The school principal is given the responsibility and authority to formulate building rules and regulations necessary to enforce this policy, subject to final school board approval. The principal shall give direction and support to all school personnel performing their duties within the framework of this policy. The principal shall consult with parents of students conducting themselves in a manner contrary to the policy. The principal shall also involve other professional employees in the disposition of Behavior referrals and shall make use of those agencies appropriate for assisting students and parents. A principal, in exercising the person's lawful authority, may use reasonable force when it is necessary under the circumstances to correct or restrain a student to prevent bodily harm or death to the student or another. A principal shall not use prone restraint and shall not inflict any form of physical holding that restricts or impairs a student's ability to breathe; restricts or impairs a student's ability to communicate distress; places pressure or weight on a student's head, throat, neck, chest, lungs, sternum, diaphragm, back, or abdomen; or results in straddling a student's torso.
- D. Teachers. All teachers shall be responsible for providing a well-planned teaching/learning environment and shall have primary responsibility for student conduct, with appropriate assistance from the administration. All teachers shall enforce the Code of Student Conduct. A teacher, in exercising the person's lawful authority, may use reasonable force when it is necessary under the circumstances to correct or restrain a student to prevent bodily harm or death to the student or another. A teacher shall not use prone restraint and shall not inflict any form of physical holding that restricts or impairs a student's ability to breathe; restricts or impairs a student's ability to communicate distress; places pressure or weight on a student's head, throat, neck, chest, lungs, sternum, diaphragm, back, or abdomen; or results in straddling a student's torso.
- E. Other School District Personnel. All school district personnel shall be responsible for contributing to the atmosphere of mutual respect within the school. Their responsibilities relating to student behavior shall be as authorized and directed by the superintendent. A school employee, school bus driver, or other agent of a school district, in exercising the person's lawful authority, may use reasonable force when it is necessary under the circumstances to restrain a student to prevent bodily harm or death to the student or another. A school employee, which does not include a school resource officer, shall not use prone restraint and shall not inflict any form of physical holding that restricts or impairs a student's ability to breathe; restricts or impairs a student's ability to communicate distress; places pressure or weight on a student's head, throat, neck, chest, lungs, sternum, diaphragm, back, or abdomen; or results in straddling a student's torso.

For the purpose of Minnesota Statutes, section 121A.582 (Student Discipline; Reasonable Force), a school resource officer, as defined in Minnesota Statutes, section 626.8482, subdivision 1, paragraph (c) is not a school employee or agent of the district.

- F. Parents or Legal Guardians. Parents and guardians shall be held responsible for the

behavior of their children as determined by law and community practice. They are expected to cooperate with school authorities and to participate regarding the behavior of their children.

- G. Students. All students shall be held individually responsible for their behavior and for knowing and obeying the Code of Student Conduct and this policy.
- H. Community Members. Members of the community are expected to contribute to the establishment of an atmosphere in which rights and duties are effectively acknowledged and fulfilled.
- I. Reasonable Force Reports
 - 1. The school district must report data on its use of any reasonable force used on a student with a disability to correct or restrain the student to prevent bodily harm or death to the student or another that is consistent with the definition of physical holding under Minnesota Statutes, section 125A.0941, paragraph (c), as outlined in section 125A.0942, subdivision 3, paragraph (b).
 - 2. Beginning with the 2024-2025 school year, the school district must report annually by July 15, in a form and manner determined by the MDE Commissioner, data from the prior school year about any reasonable force used on a general education student to correct or restrain the student to prevent bodily harm or death to the student or another that is consistent with the definition of physical holding under Minnesota Statutes, section 125A.0941, paragraph (c).
 - 3. Any reasonable force used under Minnesota Statutes, sections 121A.582; 609.06, subdivision 1; and 609.379 which intends to hold a child immobile or limit a child's movement where body contact is the only source of physical restraint or confines a child alone in a room from which egress is barred shall be reported to the Minnesota Department of Education as a restrictive procedure, including physical holding or seclusion used by an unauthorized or untrained staff person.

VI. STUDENT RIGHTS

All students have the right to an education and the right to learn.

VII. STUDENT RESPONSIBILITIES

All students have the responsibility:

- A. For their behavior and for knowing and obeying all school rules, regulations, policies, and procedures;
- B. To attend school daily, except when excused, and to be on time to all classes and other school functions;
- C. To pursue and attempt to complete the courses of study prescribed by the state and local school authorities;
- D. To make necessary arrangements for making up work when absent from school;
- E. To assist the school staff in maintaining a safe school for all students;

- F. To be aware of all school rules, regulations, policies, and procedures, including those in this policy, and to conduct themselves in accord with them;
- G. To assume that until a rule or policy is waived, altered, or repealed, it is in full force and effect;
- H. To be aware of and comply with federal, state, and local laws;
- I. To volunteer information in disciplinary cases should they have any knowledge relating to such cases and to cooperate with school staff as appropriate;
- J. To respect and maintain the school's property and the property of others;
- K. To dress and groom in a manner which meets standards of safety and health and common standards of decency and which is consistent with applicable school district policy;
- L. To avoid inaccuracies in student newspapers or publications and refrain from indecent or obscene language;
- M. To conduct themselves in an appropriate physical or verbal manner; and
- N. To recognize and respect the rights of others.

VIII. CODE OF STUDENT CONDUCT

- A. The following are examples of unacceptable behavior subject to disciplinary action by the school district. These examples are not intended to be an exclusive list. Any student who engages in any of these activities shall be disciplined in accordance with this policy. This policy applies to all school buildings, school grounds, and school property or property immediately adjacent to school grounds; school-sponsored activities or trips; school bus stops; school buses, school vehicles, school contracted vehicles, or any other vehicles approved for school district purposes; the area of entrance or departure from school premises or events; and all school-related functions, school-sponsored activities, events, or trips. School district property also may mean a student's walking route to or from school for purposes of attending school or school-related functions, activities, or events. While prohibiting unacceptable behavior subject to disciplinary action at these locations and events, the school district does not represent that it will provide supervision or assume liability at these locations and events. This policy also applies to any student whose conduct at any time or in any place interferes with or obstructs the mission or operations of the school district or the safety or welfare of the student, other students, or employees.
 - 1. Violations against property including, but not limited to, damage to or destruction of school property or the property of others, failure to compensate for damage or destruction of such property, arson, breaking and entering, theft, robbery, possession of stolen property, extortion, trespassing, unauthorized usage, or vandalism;
 - 2. The use of profanity or obscene language, or the possession of obscene materials;
 - 3. Gambling, including, but not limited to, playing a game of chance for stakes;

4. Violation of the school district's Hazing Prohibition Policy;
5. Attendance problems including, but not limited to, truancy, absenteeism, tardiness, skipping classes, or leaving school grounds without permission;
6. Violation of the school district's Student Attendance Policy;
7. Opposition to authority using physical force or violence;
8. Using, possessing, or distributing tobacco, tobacco-related devices, electronic cigarettes, or tobacco paraphernalia in violation of the school district's Tobacco-Free Environment; Possession and Use of Tobacco, Tobacco-Related Devices, and Electronic Delivery Devices Policy;
9. Using, possessing, distributing, intending to distribute, making a request to another person for (solicitation), or being under the influence of alcohol or other intoxicating substances or look-alike substances;
10. Using, possessing, distributing, intending to distribute, making a request to another person for (solicitation), or being under the influence of narcotics, drugs, or other controlled substances (except as prescribed by a physician), or look-alike substances (these prohibitions include medical marijuana or medical cannabis, even when prescribed by a physician, and one student sharing prescription medication with another student);
11. Using, possessing, or distributing items or articles that are illegal or harmful to persons or property including, but not limited to, drug paraphernalia;
12. Using, possessing, or distributing weapons, or look-alike weapons or other dangerous objects;
13. Violation of the school district's Weapons Policy;
14. Violation of the school district's Violence Prevention Policy;
15. Possession of ammunition including, but not limited to, bullets or other projectiles designed to be used in or as a weapon;
16. Possession, use, or distribution of explosives or any compound or mixture, the primary or common purpose or intended use of which is to function as an explosive;
17. Possession, use, or distribution of fireworks or any substance or combination of substances or article prepared for the purpose of producing a visible or an audible effect by combustion, explosion, deflagration or detonation;
18. Using an ignition device, including a butane or disposable lighter or matches, inside an educational building and under circumstances where there is a risk of fire, except where the device is used in a manner authorized by the school;
19. Violation of any local, state, or federal law as appropriate;
20. Acts disruptive of the educational process, including, but not limited to, disobedience, disruptive or disrespectful behavior, defiance of authority, cheating, insolence, insubordination, failure to identify oneself, improper

activation of fire alarms, or bomb threats;

21. Violation of the school district's Internet Acceptable Use and Safety Policy;
22. Use of a cell phone in violation of the school district's Internet Acceptable Use and Safety Policy;
23. Violation of school bus or transportation rules or the school district's Student Transportation Safety Policy;
24. Violation of parking or school traffic rules and regulations, including, but not limited to, driving on school property in such a manner as to endanger persons or property;
25. Violation of directives or guidelines relating to lockers or improperly gaining access to a school locker;
26. Violation of the school district's Search of Student Lockers, Desks, Personal Possessions, and Student's Person Policy;
27. Violation of the school district's Student Use and Parking of Motor Vehicles; Patrols, Inspections, and Searches Policy;
28. Possession or distribution of slanderous, libelous, or pornographic materials;
29. Violation of the school district's Bullying Prohibition Policy;
30. Student attire or personal grooming which creates a danger to health or safety or creates a disruption to the educational process, including clothing which bears a message which is lewd, vulgar, or obscene, apparel promoting products or activities that are illegal for use by minors, or clothing containing objectionable emblems, signs, words, objects, or pictures communicating a message that is racist, sexist, or otherwise derogatory to a protected minority group or which connotes gang membership;
31. Criminal activity;
32. Falsification of any records, documents, notes, or signatures;
33. Tampering with, changing, or altering records or documents of the school district by any method including, but not limited to, computer access or other electronic means;
34. Scholastic dishonesty which includes, but is not limited to, cheating on a school assignment or test, plagiarism, or collusion, including the use of picture phones or other technology to accomplish this end;
35. Impertinent or disrespectful words, symbols, acronyms, or language, whether oral or written, related to teachers or other school district personnel;
36. Violation of the school district's Harassment and Violence Policy;
37. Actions, including fighting or any other assaultive behavior, which causes or could cause injury to the student or other persons or which otherwise endangers the health, safety, or welfare of teachers, students, other school district

personnel, or other persons;

38. Committing an act which inflicts great bodily harm upon another person, even though accidental or a result of poor judgment;
39. Violations against persons, including, but not limited to, assault or threatened assault, fighting, harassment, interference or obstruction, attack with a weapon, or look-alike weapon, sexual assault, illegal or inappropriate sexual conduct, or indecent exposure;
40. Verbal assaults or verbally abusive behavior including, but not limited to, use of words, symbols, acronyms, or language, whether oral or written, that are discriminatory, abusive, obscene, threatening, intimidating, degrading to other people, or threatening to school property;
41. Physical or verbal threats including, but not limited to, the staging or reporting of dangerous or hazardous situations that do not exist;
42. Inappropriate, abusive, threatening, or demeaning actions based on race, color, creed, religion, sex, marital status, status with regard to public assistance, disability, national origin, or sexual orientation;
43. Violation of the school district's Distribution of Nonschool-Sponsored Materials on School Premises by Students and Employees Policy;
44. Violation of the school district's one-to-one device rules and regulations;
45. Violation of school rules, regulations, policies, or procedures, including, but not limited to, those policies specifically enumerated in this policy;
46. Other acts, as determined by the school district, which are disruptive of the educational process or dangerous or detrimental to the student or other students, school district personnel or surrounding persons, or which violate the rights of others or which damage or endanger the property of the school, or which otherwise interferes with or obstruct the mission or operations of the school district or the safety or welfare of students or employees.

IX. RECESS AND OTHER BREAKS

- A. "Recess detention" means excluding or excessively delaying a student from participating in a scheduled recess period as a consequence for student behavior. Recess detention does not include, among other things, providing alternative recess at the student's choice.
- B. The school district is encouraged to ensure student access to structured breaks from the demands of school and to support teachers, principals, and other school staff in their efforts to use evidence-based approaches to reduce exclusionary forms of discipline.
- C. The school district must not use recess detention unless:
 1. a student causes or is likely to cause serious physical harm to other students or staff;
 2. the student's parent or guardian specifically consents to the use of recess detention; or

- 3. for students receiving special education services, the student's individualized education program team has determined that withholding recess is appropriate based on the individualized needs of the student.
- D. The school district must not withhold recess from a student based on incomplete schoolwork.
- E. The school district must require school staff to make a reasonable attempt to notify a parent or guardian within 24 hours of using recess detention.
- F. The school district must compile information on each recess detention at the end of each school year, including the student's age, grade, gender, race or ethnicity, and special education status. This information must be available to the public upon request. The school district is encouraged to use the data in professional development promoting the use of nonexclusionary discipline.
- G. The school district must not withhold or excessively delay a student's participation in scheduled mealtimes. This section does not alter a district or school's existing responsibilities under Minnesota Statutes, section 124D.111 or other state or federal law.

X. DISCIPLINARY ACTION OPTIONS

The general policy of the school district is to utilize progressive discipline to the extent reasonable and appropriate based upon the specific facts and circumstances of student misconduct. The specific form of discipline chosen in a particular case is solely within the discretion of the school district. At a minimum, violation of school district code of conduct, rules, regulations, policies, or procedures will result in discussion of the violation and a verbal warning. The school district shall, however, impose more severe disciplinary sanctions for any violation, including exclusion or expulsion, if warranted by the student's misconduct, as determined by the school district. Disciplinary action may include, but is not limited to, one or more of the following:

- A. Student conference with teacher, principal, counselor, or other school district personnel, and verbal warning;
- B. Confiscation by school district personnel and/or by law enforcement of any item, article, object, or thing, prohibited by, or used in the violation of, any school district policy, rule, regulation, procedure, or state or federal law. If confiscated by the school district, the confiscated item, article, object, or thing will be released only to the parent/guardian following the completion of any investigation or disciplinary action instituted or taken related to the violation.
- C. Parent contact;
- D. Parent conference;
- E. Removal from class;
- F. In-school suspension;
- G. Suspension from extracurricular activities;
- H. Detention or restriction of privileges;

- I. Loss of school privileges;
- J. In-school monitoring or revised class schedule;
- K. Referral to in-school support services;
- L. Referral to community resources or outside agency services;
- M. Financial restitution;
- N. Referral to police, other law enforcement agencies, or other appropriate authorities;
- O. A request for a petition to be filed in district court for juvenile delinquency adjudication;
- P. Out-of-school suspension under the Pupil Fair Dismissal Act;
- Q. Preparation of an admission or readmission plan;
- R. Saturday school;
- S. Expulsion under the Pupil Fair Dismissal Act;
- T. Exclusion under the Pupil Fair Dismissal Act; and/or
- U. Other disciplinary action as deemed appropriate by the school district.

XI. REMOVAL OF STUDENTS FROM CLASS

- A. The teacher of record shall have the general control and government of the classroom. Teachers have the responsibility of attempting to modify disruptive student behavior by such means as conferring with the student, using positive reinforcement, assigning detention or other consequences, or contacting the student's parents. When such measures fail, or when the teacher determines it is otherwise appropriate based upon the student's conduct, the teacher shall have the authority to remove the student from class pursuant to the procedures established by this discipline policy. "Removal from class" and "removal" mean any actions taken by a teacher, principal, or other school district employee to prohibit a student from attending a class or activity period for a period of time not to exceed five (5) days, pursuant to this discipline policy.

Grounds for removal from class shall include any of the following:

- 1. Willful conduct that significantly disrupts the rights of others to an education, including conduct that interferes with a teacher's ability to teach or communicate effectively with students in a class or with the ability of other students to learn;
- 2. Willful conduct that endangers surrounding persons, including school district employees, the student or other students, or the property of the school;
- 3. Willful violation of any school rules, regulations, policies or procedures, including the Code of Student Conduct in this policy; or
- 4. Other conduct, which in the discretion of the teacher or administration, requires removal of the student from class.

Such removal shall be for at least one (1) activity period or class period of instruction for a given course of study and shall not exceed five (5) such periods.

A student must be removed from class immediately if the student engages in assault or violent behavior. "Assault" is an act done with intent to cause fear in another of immediate bodily harm or death; or the intentional infliction of, or attempt to inflict, bodily harm upon another.

- B. If a student is removed from class more than ten (10) times in a school year, the school district shall notify the parent or guardian of the student's tenth removal from class and make reasonable attempts to convene a meeting with the student's parent or guardian to discuss the problem that is causing the student to be removed from class.

[Note: The following Sections C. - J. must be developed and inserted by each school district based upon individual district practices, procedures, and preferences. School districts may consider developing and inserting procedures identified in Sections K-N.]

C. Procedures for Removal of a Student From a Class.

1. *Specify procedures to remove a student from a class to be followed by a teacher, school administrator, or other school district employee;*
2. *Specify required approvals necessary;*
3. *Specify paperwork and reporting procedures.*

D. Period of Time for which a Student may be Removed from a Class (may not exceed five (5) class periods for a violation of a rule of conduct)

1. The removal from class shall be for a period of time deemed appropriate by the principal, in consultation with the teacher.

E. Responsibility for and Custody of a Student Removed from Class.

1. *Designation of where student is to go when removed;*
2. *Designation of how student is to get to designated destination;*
3. *Whether student must be accompanied;*
4. *Statement of what student is to do when and while removed;*
5. *Designation of who has control over and responsibility for student after removal from class.*

F. Procedures for Return of a Student to a Specific Class from Which the Student was Removed.

1. *Specification of procedures;*
2. *Actions or approvals required such as notes, conferences, readmission plans.*

G. Procedures for Notifying a Student and the Student's Parents or Guardian of Violation of the Rules of Conduct and of Resulting Disciplinary Actions;

1. *Specification of Procedures;*
2. *Actions or approvals required, such as notes, conferences, readmission plans.*

H. Students with a Disability; Special Provisions.

1. *Procedures for consideration of whether there is a need for further assessment;*
2. *Procedures for consideration of whether there is a need for a review of the adequacy of the current Individualized Education Program (IEP) of a student with a disability who is removed from class or disciplined; and*
3. *Any procedures determined appropriate for referring students in need of special education services to those services.*

I. Procedures for Detecting and Addressing Chemical Abuse Problems of Students While on School Premises.

1. *Establishment of a chemical abuse preassessment team pursuant to Minnesota Statutes, section 121A.26;*
2. *Establishment of teacher reporting procedures to the chemical abuse preassessment team pursuant to Minnesota Statutes, section 121A.29.*

J. Procedures for Immediate and Appropriate Interventions Tied to Violations of the Code of Student Conduct.

K. Any Procedures Determined Appropriate for Encouraging Early Involvement of Parents or Guardians in Attempts to Improve a Student's Behavior.

L. Any Procedures Determined Appropriate for Encouraging Early Detection of Behavioral Problems.

M. Any Procedures Determined Appropriate for Referring a Student in Need of Special Education Services to Those Services;

N. Any Procedures Determined Appropriate for Ensuring Victims of Bullying who Respond with Behavior not Allowed under the School's Behavior Policies have Access to a Remedial Response, Consistent with Minnesota Statutes, section 121A.031; and

XII. DISMISSAL

- A. "Dismissal" means the denial of the current educational program to any student, including exclusion, expulsion, and suspension. Dismissal does not include removal from class.

The school district shall not deny due process or equal protection of the law to any student involved in a dismissal proceeding which may result in suspension, exclusion or expulsion.

The school district shall not dismiss any student without attempting to use

nonexclusionary disciplinary policies and procedures before dismissal proceedings or pupil withdrawal agreements, except where it appears that the student will create an immediate and substantial danger to self or to surrounding persons or property.

The use of exclusionary practices for early learners as defined in Minnesota Statutes, section 121A.425, is prohibited. The use of exclusionary practices to address attendance and truancy issues is prohibited.

B. Violations leading to suspension, based upon severity, may also be grounds for actions leading to expulsion, and/or exclusion. A student may be dismissed on any of the following grounds:

1. Willful violation of any reasonable school board regulation, including those found in this policy;
2. Willful conduct that significantly disrupts the rights of others to an education, or the ability of school personnel to perform their duties, or school sponsored extracurricular activities; or
3. Willful conduct that endangers the student or other students, or surrounding persons, including school district employees, or property of the school.

C. Disciplinary Dismissals Prohibited

1. A pupil enrolled in the following is not subject to dismissals under the Pupil Fair Dismissal Act:
 - a. a preschool or prekindergarten program, including an early childhood family education, school readiness, voluntary prekindergarten, Head Start, or other school-based preschool or prekindergarten program; or
 - b. kindergarten through Grade 3.
2. This section does not apply to a dismissal from school for less than one school day, except as provided under Minnesota Statutes, chapter 125A and federal law for a student receiving special education services.
3. Notwithstanding this section, expulsions and exclusions may be used only after resources outlined under nonexclusionary discipline have been exhausted, and only in circumstances where there is an ongoing serious safety threat to the child or others.

D. Suspension Procedures

1. "Suspension" means an action by the school administration, under rules promulgated by the school board, prohibiting a student from attending school for a period of no more than ten (10) school days; provided, however, if a suspension is longer than five (5) school days, the suspending administrator shall provide the superintendent with a reason for the longer term of suspension. This definition does not apply to dismissal for one (1) school day or less where a student with a disability does not receive regular or special education instruction during that dismissal period.
2. School administration must allow a suspended pupil the opportunity to complete all school work assigned during the period of the pupil's suspension and to

receive full credit for satisfactorily completing the assignments. The school principal or other person having administrative control of the school building or program is encouraged to designate a district or school employee as a liaison to work with the pupil's teachers to allow the suspended pupil to (1) receive timely course materials and other information, and (2) complete daily and weekly assignments and receive teachers' feedback.

3. If a student's total days of removal from school exceed ten (10) cumulative days in a school year, the school district shall make reasonable attempts to convene a meeting with the student and the student's parent or guardian before subsequently removing the student from school and, with the permission of the parent or guardian, arrange for a mental health screening for the student at the parent or guardian's expense. The purpose of this meeting is to attempt to determine the student's need for assessment or other services or whether the parent or guardian should have the student assessed or diagnosed to determine whether the student needs treatment for a mental health disorder.
4. The definition of suspension under Minnesota Statutes, section 121A.41, subdivision 10, does not apply to a student's dismissal from school for less than one day, except as provided under federal law for a student with a disability. Each suspension action may include a readmission plan. The plan shall include, where appropriate, a provision for implementing alternative educational services upon readmission which must not be used to extend the current suspension. A readmission plan must not obligate a parent or guardian to provide psychotropic drugs to their student as a condition of readmission. School administration must not use the refusal of a parent or guardian to consent to the administration of psychotropic drugs to their student or to consent to a psychiatric evaluation, screening, or examination of the student as a ground, by itself, to prohibit the student from attending class or participating in a school-related activity, or as a basis of a charge of child abuse, child neglect, or medical or educational neglect. The school administration may not impose consecutive suspensions against the same student for the same course of conduct, or incident of misconduct, except where the student will create an immediate and substantial danger to self or to surrounding persons or property or where the school district is in the process of initiating an expulsion, in which case the school administration may extend the suspension to a total of fifteen (15) days.
5. A child with a disability may be suspended. When a child with a disability has been suspended for more than five (5) consecutive days or ten (10) cumulative school days in the same year, and that suspension does not involve a recommendation for expulsion or exclusion or other change in placement under federal law, relevant members of the child's IEP team, including at least one of the child's teachers, shall meet and determine the extent to which the child needs services in order to continue to participate in the general education curriculum, although in another setting, and to progress toward meeting the goals in the child's IEP. That meeting must occur as soon as possible, but no more than ten (10) days after the sixth (6th) consecutive day of suspension or the tenth (10th) cumulative day of suspension has elapsed.
6. Alternative education services must be provided to a pupil who is suspended for more than five (5) consecutive school days. Alternative educational services may include, but are not limited to, special tutoring, modified curriculum, modified instruction, other modifications or adaptations, instruction through electronic media, special education services as indicated by appropriate assessments, homebound instruction, supervised homework, or enrollment in

another district or in an alternative learning center under Minnesota Statutes, section 123A.05 selected to allow the student to progress toward meeting graduation standards under Minnesota Statutes, section 120B.02, although in a different setting.

7. The school administration shall not suspend a student from school without an informal administrative conference with the student. The informal administrative conference shall take place before the suspension, except where it appears that the student will create an immediate and substantial danger to self or to surrounding persons or property, in which case the conference shall take place as soon as practicable following the suspension. At the informal administrative conference, a school administrator shall notify the student of the grounds for the suspension, provide an explanation of the evidence the authorities have, and the student may present the student's version of the facts. A separate administrative conference is required for each period of suspension.
8. After school administration notifies a student of the grounds for suspension, school administration may, instead of imposing the suspension, do one or more of the following:
 - a. strongly encourage a parent or guardian of the student to attend school with the student for one day;
 - b. assign the student to attend school on Saturday as supervised by the principal or the principal's designee; and
 - c. petition the juvenile court that the student is in need of services under Minnesota Statutes, chapter 260C.
9. A written notice containing the grounds for suspension, a brief statement of the facts, a description of the testimony, a readmission plan, and a copy of the Minnesota Pupil Fair Dismissal Act, Minnesota Statutes, sections 121A.40-121A.56, shall be personally served upon the student at or before the time the suspension is to take effect, and upon the student's parent or guardian by mail within forty-eight (48) hours of the conference. (See attached sample Notice of Suspension.)
10. The school administration shall make reasonable efforts to notify the student's parent or guardian of the suspension by telephone as soon as possible following suspension.
11. In the event a student is suspended without an informal administrative conference on the grounds that the student will create an immediate and substantial danger to surrounding persons or property, the written notice shall be served upon the student and the student's parent or guardian within forty-eight (48) hours of the suspension. Service by mail shall be complete upon mailing.
12. Notwithstanding the foregoing provisions, the student may be suspended pending the school board's decision in an expulsion or exclusion proceeding, provided that alternative educational services are implemented to the extent that suspension exceeds five (5) consecutive school days.

E. Expulsion and Exclusion Procedures

1. "Expulsion" means a school board action to prohibit an enrolled student from further attendance for up to twelve (12) months from the date the student is expelled. The authority to expel rests with the school board.
2. "Exclusion" means an action taken by the school board to prevent enrollment or re-enrollment of a student for a period that shall not extend beyond the school year. The authority to exclude rests with the school board.
3. All expulsion and exclusion proceedings will be held pursuant to and in accordance with the provisions of the Minnesota Pupil Fair Dismissal Act, Minnesota Statutes, sections 121A.40-121A.56.
4. No expulsion or exclusion shall be imposed without a hearing, unless the right to a hearing is waived in writing by the student and parent or guardian.
5. The student and parent or guardian shall be provided written notice of the school district's intent to initiate expulsion or exclusion proceedings. This notice shall be served upon the student and his or her parent or guardian personally or by mail, and shall contain a complete statement of the facts; a list of the witnesses and a description of their testimony; state the date, time and place of hearing; be accompanied by a copy of the Pupil Fair Dismissal Act, Minnesota Statutes, sections 121A.40-121A.56; describe the nonexclusionary disciplinary practices accorded the student in an attempt to avoid the expulsion proceedings; and inform the student and parent or guardian of their right to: (1) have a representative of the student's own choosing, including legal counsel at the hearing; (2) examine the student's records before the hearing; (3) present evidence; and (4) confront and cross-examine witnesses. The school district must advise the student's parent or guardian that free or low-cost legal assistance may be available and that a legal assistance resource list is available from the Minnesota Department of Education (MDE) and is posted on its website.
6. The hearing shall be scheduled within ten (10) days of the service of the written notice unless an extension, not to exceed five (5) days, is requested for good cause by the school district, student, parent, or guardian.
7. All hearings shall be held at a time and place reasonably convenient to the student, parent, or guardian and shall be closed, unless the student, parent, or guardian requests an open hearing.
8. The school district shall record the hearing proceedings at district expense, and a party may obtain a transcript at its own expense.
9. The student shall have a right to a representative of the student's own choosing, including legal counsel, at the student's sole expense. The school district shall advise the student's parent or guardian that free or low-cost legal assistance may be available and that a legal assistance resource list is available from MDE. The school board may appoint an attorney to represent the school district in any proceeding.
10. If the student designates a representative other than the parent or guardian, the representative must have a written authorization from the student and the parent or guardian providing them with access to and/or copies of the student's records.
11. All expulsion or exclusion hearings shall take place before and be conducted by

an independent hearing officer designated by the school district. The hearing shall be conducted in a fair and impartial manner. Testimony shall be given under oath and the hearing officer shall have the power to issue subpoenas and administer oaths.

12. At a reasonable time prior to the hearing, the student, parent or guardian, or authorized representative shall be given access to all school district records pertaining to the student, including any tests or reports upon which the proposed dismissal action may be based.
13. The student, parent or guardian, or authorized representative, shall have the right to compel the presence of any school district employee or agent or any other person who may have evidence upon which the proposed dismissal action may be based, and to confront and cross-examine any witnesses testifying for the school district.
14. The student, parent or guardian, or authorized representative, shall have the right to present evidence and testimony, including expert psychological or educational testimony.
15. The student cannot be compelled to testify in the dismissal proceedings.
16. The hearing officer shall prepare findings and a recommendation based solely upon substantial evidence presented at the hearing, which must be made to the school board and served upon the parties within two (2) days after the close of the hearing.
17. The school board shall base its decision upon the findings and recommendation of the hearing officer and shall render its decision at a meeting held within five (5) days after receiving the findings and recommendation. The school board may provide the parties with the opportunity to present exceptions and comments to the hearing officer's findings and recommendation provided that neither party presents any evidence not admitted at the hearing. The decision by the school board must be based on the record, must be in writing, and must state the controlling facts on which the decision is made in sufficient detail to apprise the parties and the Commissioner of the Minnesota Department of Education (Commissioner) of the basis and reason for the decision.
18. A party to an expulsion or exclusion decision made by the school board may appeal the decision to the Commissioner within twenty-one (21) calendar days of school board action pursuant to Minnesota Statutes, section 121A.49. The decision of the school board shall be implemented during the appeal to the Commissioner.
19. The school district shall report any suspension, expulsion or exclusion action taken to the appropriate public service agency, when the student is under the supervision of such agency.
20. The school district must report, through the MDE electronic reporting system, each expulsion or exclusion within thirty (30) days of the effective date of the action to the Commissioner. This report must include a statement of alternative educational services given the student and the reason for, the effective date, and the duration of the exclusion or expulsion. The report must also include the student's age, grade, gender, race, and special education status. The dismissal report must include state student identification numbers of affected students.

21. Whenever a student fails to return to school within ten (10) school days of the termination of dismissal, a school administrator shall inform the student and his/her parent or guardian by mail of the student's right to attend and to be reinstated in the school district.

XIII. ADMISSION OR READMISSION PLAN

A school administrator must prepare and enforce an admission or readmission plan for any student who is excluded or expelled from school. The plan must include measures to improve the student's behavior, which may include completing a character education program consistent with Minnesota Statutes, section 120B.232, subdivision 1, social and emotional learning, counseling, social work services, mental health services, referrals for special education or 504 evaluation, and evidence-based academic interventions. The plan must include reasonable attempts to obtain parental involvement in the admission or readmission process, and may indicate the consequences to the student of not improving the student's behavior. The readmission plan must not obligate parents to provide a sympathomimetic medication for their child as a condition of readmission.

XIV. NOTIFICATION OF POLICY VIOLATIONS

Notification of any violation of this policy and resulting disciplinary action shall be as provided herein, or as otherwise provided by the Pupil Fair Dismissal Act or other applicable law. The teacher, principal or other school district official may provide additional notification as deemed appropriate.

In addition, the school district must report, through the MDE electronic reporting system, each exclusion or expulsion, each physical assault of a school district employee by a pupil, and each pupil withdrawal agreement within thirty (30) days of the effective date of the dismissal action, pupil withdrawal, or assault, to the MDE Commissioner. This report must include a statement of the nonexclusionary disciplinary practices, or other sanction, intervention, or resolution in response to the assault given to the pupil and the reason for, the effective date, and the duration of the exclusion or expulsion or other sanction, intervention, or resolution. The report must also include the pupil's age, grade, gender, race, and special education status.

XV. STUDENT DISCIPLINE RECORDS

The policy of the school district is that complete and accurate student discipline records be maintained. The collection, dissemination, and maintenance of student discipline records shall be consistent with applicable school district policies and federal and state law, including the Minnesota Government Data Practices Act, Minnesota Statutes, chapter 13.

XVI. STUDENTS WITH DISABILITIES

Students who are currently identified as eligible under the IDEA or Section 504 will be subject to the provisions of this policy, unless the student's IEP or 504 plan specifies a necessary modification.

Before initiating an expulsion or exclusion of a student with a disability, relevant members of the child's IEP team and the child's parent shall, consistent with federal law, conduct a manifestation determination and determine whether the child's behavior was (i) caused by or had a direct and substantial relationship to the child's disability and (ii) whether the child's conduct was a direct result of a failure to implement the child's IEP. If the student's educational program is appropriate and the behavior is not a manifestation of the student's disability, the school district will proceed with discipline – up to and including expulsion – as if the student did

not have a disability, unless the student's educational program provides otherwise. If the team determines that the behavior subject to discipline is a manifestation of the student's disability, the team shall conduct a functional behavioral assessment and implement a behavioral intervention plan for such student provided that the school district had not conducted such assessment prior to the manifestation determination before the behavior that resulted in a change of placement. Where a behavioral intervention plan previously has been developed, the team will review the behavioral intervention plan and modify it as necessary to address the behavior.

When a student who has an IEP is excluded or expelled for misbehavior that is not a manifestation of the student's disability, the school district shall continue to provide special education and related services during the period of expulsion or exclusion.

XVII. OPEN ENROLLED STUDENTS

The school district may terminate the enrollment of a nonresident student enrolled under an Enrollment Option Program (Minnesota Statutes, section 124D.03) or Enrollment in Nonresident District (Minnesota Statutes, section 124D.08) at the end of a school year if the student meets the definition of a habitual truant, the student has been provided appropriate services for truancy (Minnesota Statutes, chapter 260A), and the student's case has been referred to juvenile court. The school district may also terminate the enrollment of a nonresident student over the age of seventeen (17) enrolled under an Enrollment Options Program if the student is absent without lawful excuse for one or more periods on fifteen (15) school days and has not lawfully withdrawn from school.

XVIII. DISCIPLINE COMPLAINT PROCEDURE

Students, parents and other guardians, and school staff may file a complaint and seek corrective action when the requirements of the Minnesota Pupil Fair Dismissal Act, including the implementation of the local behavior and discipline policies, are not being implemented appropriately or are being discriminately applied.

The Discipline Complaint Procedure must, at a minimum:

1. provide procedures for communicating this policy including the ability for a parent to appeal a decision under Minnesota Statutes, section 121A.49 that contains explicit instructions for filing the complaint;
2. provide an opportunity for involved parties to submit additional information related to the complaint;
3. provide a procedure to begin to investigate complaints within three school days of receipt, and identify personnel who will manage the investigation and any resulting record and are responsible for keeping and regulating access to any record;
4. provide procedures for issuing a written determination to the complainant that addresses each allegation and contains findings and conclusions;
5. if the investigation finds the requirements of Minnesota Statutes, sections 121A.40 to 121A.61, including any local policies that were not implemented appropriately, contain procedures that require a corrective action plan to correct a student's record and provide relevant staff with training, coaching, or other accountability practices to ensure appropriate compliance with policies in the future; and

6. prohibit reprisals or retaliation against any person who asserts, alleges, or reports a complaint, and provide procedures for applying appropriate consequences for a person who engages in reprisal or retaliation.

XIX. DISTRIBUTION OF POLICY

The school district will notify students and parents of the existence and contents of this policy in such manner as it deems appropriate. Copies of this discipline policy shall be made available to all students and parents at the commencement of each school year and to all new students and parents upon enrollment. This policy shall also be available upon request in each principal's office.

XX. REVIEW OF POLICY

The principal and representatives of parents, students and staff in each school building shall confer at least annually to review this discipline policy, determine if the policy is working as intended, and to assess whether the discipline policy has been enforced. Any recommended changes shall be submitted to the superintendent for consideration by the school board, which shall conduct an annual review of this policy.

Legal References: Minn. Stat. Ch. 13 (Minnesota Government Data Practices Act)
Minn. Stat. § 120B.02 (Educational Expectations and Graduation Requirements for Minnesota Students)
Minn. Stat. § 120B.232 (Character Development Education)
Minn. Stat. § 121A.26 (School Preassessment Teams)
Minn. Stat. § 121A.29 (Reporting; Chemical Abuse)
Minn. Stat. §§ 121A.40-121A.56 (Pupil Fair Dismissal Act)
Minn. Stat. § 121A.575 (Alternatives to Pupil Suspension)
Minn. Stat. § 121A.58 (Corporal Punishment; Prone Restraint; And Certain Physical Holds)
Minn. Stat. § 121A.582 (Student Discipline; Reasonable Force)
Minn. Stat. §§ 121A.60 (Definitions)
Minn. Stat. § 121A.61 (Discipline and Removal of Students from Class)
Minn. Stat. § 121A.611 (Recess and Other Breaks)
Minn. Stat. § 122A.42 (General Control of Schools)
Minn. Stat. § 123A.05 (State-Approved Alternative Program Organization)
Minn. Stat. § 124D.03 (Enrollment Options Program)
Minn. Stat. § 124D.08 (School Boards' Approval to Enroll in Nonresident District; Exceptions)
Minn. Stat. Ch. 125A (Special Education and Special Programs)
Minn. Stat. § 152.22, Subd. 6 (Definitions)
Minn. Stat. § 152.23 (Limitations)
Minn. Stat. Ch. 260A (Truancy)
Minn. Stat. Ch. 260C (Juvenile Safety and Placement)
20 U.S.C. §§ 1400-1487 (Individuals with Disabilities Education Act)
29 U.S.C. § 794 *et seq.* (Rehabilitation Act of 1973, § 504)
34 C.F.R. § 300.530(e)(1) (Manifestation Determination)

Cross References: Royalton Policy 413 (Harassment and Violence)
Royalton Policy 419 (Tobacco-Free Environment; Possession and Use of Tobacco, Tobacco-Related Devices, and Electronic Delivery Devices; Vaping Awareness and Prevention Instruction)
Royalton Policy 501 (School Weapons)
Royalton Policy 502 (Search of Student Lockers, Desks, Personal Possessions, and Student's Person)

Royalton Policy 503 (Student Attendance)
Royalton Policy 505 (Distribution of Nonschool-Sponsored
Materials on School Premises by Students and Employees)
Royalton Policy 507.5 (School Resource Officers)
Royalton Policy 514 (Bullying Prohibition Policy)
Royalton Policy 524 (Internet Acceptable Use and Safety Policy)
Royalton Policy 525 (Violence Prevention)
Royalton Policy 526 (Hazing Prohibition)
Royalton Policy 527 (Student Use and Parking of Motor Vehicles; Patrols,
Inspections, and Searches)
Royalton Policy 610 (Field Trips)
Royalton Policy 709 (Student Transportation Safety Policy)
Royalton Policy 711 (Video Recording on School Buses)
Royalton Policy 712 (Video Surveillance Other Than on Buses)

514 BULLYING PROHIBITION POLICY

I. PURPOSE

A safe and civil environment is needed for students to learn and attain high academic standards and to promote healthy human relationships. Bullying, like other violent or disruptive behavior, is conduct that interferes with a student's ability to learn and/or a teacher's ability to educate students in a safe environment. The school district cannot monitor the activities of students at all times and eliminate all incidents of bullying between students, particularly when students are not under the direct supervision of school personnel. However, to the extent such conduct affects the educational environment of the school district and the rights and welfare of its students and is within the control of the school district in its normal operations, the school district intends to prevent bullying and to take action to investigate, respond to, and to remediate and discipline for those acts of bullying which have not been successfully prevented. The purpose of this policy is to assist the school district in its goal of preventing and responding to acts of bullying, intimidation, violence, reprisal, retaliation, and other similar disruptive and detrimental behavior.

II. GENERAL STATEMENT OF POLICY

- A. An act of bullying, by either an individual student or a group of students, is expressly prohibited:
 - 1. on the school premises, at the school functions or activities, on the school transportation;
 - 2. by the use of electronic technology and communications on the school premises, during the school functions or activities, on the school transportation, or on the school computers, networks, forums, and mailing lists; or
 - 3. by use of electronic technology and communications off the school premises to the extent such use substantially and materially disrupts student learning or the school environment.
- B. A school-aged child who voluntarily participates in a public school activity, such as a cocurricular or extracurricular activity, is subject to the policy provisions applicable to the public school students participating in the activity.
- C. This policy applies not only to students who directly engage in an act of bullying but also to students who, by their indirect behavior, condone or support another student's act of bullying. This policy also applies to any student whose conduct at any time or in any place constitutes bullying or other prohibited conduct that interferes with or obstructs the mission or operations of the school district or the safety or welfare of the student or other students, or materially and substantially interferes with a student's educational opportunities or performance or ability to participate in school functions or activities or receive school benefits, services, or privileges. This policy also applies to an act of cyberbullying regardless of whether such act is committed on or off school district property and/or with or without the use of school district resources. This policy also applies to sexual exploitation.
- D. Malicious and sadistic conduct involving race, color, creed, national origin, sex, age,

marital status, status with regard to public assistance, disability, religion, sexual harassment, and sexual orientation and gender identity as defined in Minnesota Statutes, chapter 363A is prohibited. This prohibition applies to students, independent contractors, teachers, administrators, and other school personnel.

Malicious and sadistic conduct and sexual exploitation by a school district or school staff member, independent contractor, or enrolled student against a staff member, independent contractor, or student that occurs as described in Article II.A above is prohibited.

- E. No teacher, administrator, volunteer, contractor, or other employee of the school district shall permit, condone, or tolerate bullying.
- F. Apparent permission or consent by a student being bullied does not lessen or negate the prohibitions contained in this policy.
- G. Retaliation against a victim, good faith reporter, or a witness of bullying is prohibited.
- H. False accusations or reports of bullying against another student are prohibited.
- I. A person who engages in an act of bullying, reprisal, retaliation, or false reporting of bullying or permits, condones, or tolerates bullying shall be subject to discipline or other remedial responses for that act in accordance with the school district's policies and procedures, including the school district's discipline policy (Policy 506). The school district may take into account the following factors:
 - 1. The developmental ages and maturity levels of the parties involved;
 - 2. The levels of harm, surrounding circumstances, and nature of the behavior;
 - 3. Past incidences or past or continuing patterns of behavior;
 - 4. The relationship between the parties involved; and
 - 5. The context in which the alleged incidents occurred.

Consequences for students who commit prohibited acts of bullying may range from remedial responses or positive behavioral interventions up to and including suspension and/or expulsion. The school district shall employ research-based developmentally appropriate best practices that include preventative and remedial measures and effective discipline for deterring violations of this policy, apply throughout the school district, and foster student, parent, and community participation.

Consequences for employees who permit, condone, or tolerate bullying or engage in an act of reprisal or intentional false reporting of bullying may result in disciplinary action up to and including termination or discharge.

Consequences for other individuals engaging in prohibited acts of bullying may include, but not be limited to, exclusion from school district property and events.

- J. The school district will act to investigate all complaints of bullying reported to the school district and will discipline or take appropriate action against any student, teacher, administrator, volunteer, contractor, or other employee of the school district who is found to have violated this policy.

III. DEFINITIONS

For purposes of this policy, the definitions included in this section apply.

- A. "Bullying" means intimidating, threatening, abusive, or harming conduct that is objectively offensive and:
1. an actual or perceived imbalance of power exists between the student engaging in the prohibited conduct and the target of the prohibited conduct, and the conduct is repeated or forms a pattern; or
 2. materially and substantially interferes with a student's educational opportunities or performance or ability to participate in school functions or activities or receive school benefits, services, or privileges.

The term "bullying" specifically includes cyberbullying, malicious and sadistic conduct, and sexual exploitation.

- B. "Cyberbullying" means bullying using technology or other electronic communication, including, but not limited to, a transfer of a sign, signal, writing, image, sound, or data, including a post on a social network Internet website or forum, transmitted through a computer, cell phone, or other electronic device. The term applies to prohibited conduct which occurs on school premises, on school district property, at school functions or activities, on school transportation, or on school computers, networks, forums, and mailing lists, or off school premises to the extent that it substantially and materially disrupts student learning or the school environment.
- C. "Immediately" means as soon as possible but in no event longer than 24 hours.
- D. "Intimidating, threatening, abusive, or harming conduct" means, but is not limited to, conduct that does the following:
1. Causes physical harm to a student or a student's property or causes a student to be in reasonable fear of harm to person or property;
 2. Under Minnesota common law, violates a student's reasonable expectation of privacy, defames a student, or constitutes intentional infliction of emotional distress against a student; or
 3. Is directed at any student or students, including those based on a person's actual or perceived race, ethnicity, color, creed, religion, national origin, immigration status, sex, marital status, familial status, socioeconomic status, physical appearance, sexual orientation including gender identity and expression, academic status related to student performance, disability, or status with regard to public assistance, age, or any additional characteristic defined in the Minnesota Human Rights Act (MHRA). However, prohibited conduct need not be based on any particular characteristic defined in this paragraph or the MHRA.
- E. "Malicious and sadistic conduct" means creating a hostile learning environment by acting with the intent to cause harm by intentionally injuring another without just cause or reason or engaging in extreme or excessive cruelty or delighting in cruelty.
- F. "On school premises, on school district property, at school functions or activities, or on school transportation" means all school district buildings, school grounds, and school

property or property immediately adjacent to school grounds, school bus stops, school buses, school vehicles, school contracted vehicles, or any other vehicles approved for school district purposes, the area of entrance or departure from school grounds, premises, or events, and all school-related functions, school-sponsored activities, events, or trips. School district property also may mean a student's walking route to or from school for purposes of attending school or school-related functions, activities, or events. While prohibiting bullying at these locations and events, the school district does not represent that it will provide supervision or assume liability at these locations and events.

- G. "Prohibited conduct" means bullying, cyberbullying, malicious and sadistic conduct, sexual exploitation, or retaliation or reprisal for asserting, alleging, reporting, or providing information about such conduct or knowingly making a false report about prohibited conduct.
- H. "Remedial response" means a measure to stop and correct prohibited conduct, prevent prohibited conduct from recurring, and protect, support, and intervene on behalf of a student who is the target or victim of prohibited conduct.
- I. "Student" means a student enrolled in a public school or a charter school.

IV. REPORTING PROCEDURE

- A. Any person who believes he or she has been the target or victim of bullying or any person with knowledge or belief of conduct that may constitute bullying or prohibited conduct under this policy shall report the alleged acts immediately to an appropriate school district official designated by this policy. A person may report bullying anonymously. However, the school district may not rely solely on an anonymous report to determine discipline or other remedial responses.
- B. The school district encourages the reporting party or complainant to use the report form available from the principal or building supervisor of each building or available in the school district office, but oral reports shall be considered complaints as well.
- C. The building principal, the principal's designee, or the building supervisor (hereinafter the "building report taker") is the person responsible for receiving reports of bullying or other prohibited conduct at the building level. Any person may report bullying or other prohibited conduct directly to a school district human rights officer or the superintendent. If the complaint involves the building report taker, the complaint shall be made or filed directly with the superintendent or the school district human rights officer by the reporting party or complainant.

The building report taker shall ensure that this policy and its procedures, practices, consequences, and sanctions are fairly and fully implemented and shall serve as the primary contact on policy and procedural matters. The building report taker or a third party designated by the school district shall be responsible for the investigation. The building report taker shall provide information about available community resources to the target or victim of the bullying or other prohibited conduct, the perpetrator, and other affected individuals as appropriate.

- D. A teacher, school administrator, volunteer, contractor, or other school employee shall be particularly alert to possible situations, circumstances, or events that might include bullying. Any such person who witnesses, observes, receives a report of, or has other knowledge or belief of conduct that may constitute bullying or other prohibited conduct shall make reasonable efforts to address and resolve the bullying or prohibited conduct

and shall inform the building report taker immediately. School district personnel who fail to inform the building report taker of conduct that may constitute bullying or other prohibited conduct or who fail to make reasonable efforts to address and resolve the bullying or prohibited conduct in a timely manner may be subject to disciplinary action.

- E. Reports of bullying or other prohibited conduct are classified as private educational and/or personnel data and/or confidential investigative data and will not be disclosed except as permitted by law. The building report taker, in conjunction with the responsible authority, shall be responsible for keeping and regulating access to any report of bullying and the record of any resulting investigation.
- F. Submission of a good faith complaint or report of bullying or other prohibited conduct will not affect the complainant's or reporter's future employment, grades, work assignments, or educational or work environment.
- G. The school district will respect the privacy of the complainant(s), the individual(s) against whom the complaint is filed, and the witnesses as much as possible, consistent with the school district's obligation to investigate, take appropriate action, and comply with any legal disclosure obligations.

V. SCHOOL DISTRICT ACTION

- A. Within three days of the receipt of a complaint or report of bullying or other prohibited conduct, the school district shall undertake or authorize an investigation by the building report taker or a third party designated by the school district.
- B. The building report taker or other appropriate school district officials may take immediate steps, at their discretion, to protect the target or victim of the bullying or other prohibited conduct, the complainant, the reporter, and students or others, pending completion of an investigation of the bullying or other prohibited conduct, consistent with applicable law.
- C. The alleged perpetrator of the bullying or other prohibited conduct shall be allowed the opportunity to present a defense during the investigation or prior to the imposition of discipline or other remedial responses.
- D. Upon completion of an investigation that determines that bullying or other prohibited conduct has occurred, the school district will take appropriate action. Such action may include, but is not limited to, warning, suspension, exclusion, expulsion, transfer, remediation, termination, or discharge. Disciplinary consequences will be sufficiently severe to try to deter violations and to appropriately discipline prohibited conduct. Remedial responses to the bullying or other prohibited conduct shall be tailored to the particular incident and nature of the conduct and shall take into account the factors specified in Section II.F. of this policy. School district action taken for violation of this policy will be consistent with the requirements of applicable collective bargaining agreements; applicable statutory authority, including the Minnesota Pupil Fair Dismissal Act; the student discipline policy (Policy 506) and other applicable school district policies; and applicable regulations.
- E. The school district is not authorized to disclose to a victim private educational or personnel data regarding an alleged perpetrator who is a student or employee of the school district. School officials will notify the parent(s) or guardian(s) of students who are targets of bullying or other prohibited conduct and the parent(s) or guardian(s) of alleged perpetrators of bullying or other prohibited conduct who have been involved in a reported and confirmed bullying incident of the remedial or disciplinary action taken,

to the extent permitted by law.

- F. In order to prevent or respond to bullying or other prohibited conduct committed by or directed against a child with a disability, the school district shall, when determined appropriate by the child's individualized education program (IEP) team or Section 504 team, allow the child's IEP or Section 504 plan to be drafted to address the skills and proficiencies the child needs as a result of the child's disability to allow the child to respond to or not to engage in bullying or other prohibited conduct.

VI. RETALIATION OR REPRISAL

The school district will discipline or take appropriate action against any student, teacher, administrator, volunteer, contractor, or other employee of the school district who commits an act of reprisal or who retaliates against any person who asserts, alleges, or makes a good faith report of alleged bullying or prohibited conduct, who provides information about bullying or prohibited conduct, who testifies, assists, or participates in an investigation of alleged bullying or prohibited conduct, or who testifies, assists, or participates in a proceeding or hearing relating to such bullying or prohibited conduct. Retaliation includes, but is not limited to, any form of intimidation, reprisal, harassment, or intentional disparate treatment. Disciplinary consequences will be sufficiently severe to deter violations and to appropriately discipline the individual(s) who engaged in the prohibited conduct. Remedial responses to the prohibited conduct shall be tailored to the particular incident and nature of the conduct and shall take into account the factors specified in Section II.F. of this policy.

VII. TRAINING AND EDUCATION

- A. The school district shall discuss this policy with school personnel and volunteers and provide appropriate training to school district personnel regarding this policy. The school district shall establish a training cycle for school personnel to occur during a period not to exceed every three school years. Newly employed school personnel must receive the training within the first year of their employment with the school district. The school district or a school administrator may accelerate the training cycle or provide additional training based on a particular need or circumstance. This policy shall be included in employee handbooks, training materials, and publications on school rules, procedures, and standards of conduct, which materials shall also be used to publicize this policy.
- B. The school district shall require ongoing professional development, consistent with Minnesota Statutes section 122A.60, to build the skills of all school personnel who regularly interact with students to identify, prevent, and appropriately address bullying and other prohibited conduct. Such professional development includes, but is not limited to, the following:
 - 1. Developmentally appropriate strategies both to prevent and to immediately and effectively intervene to stop prohibited conduct;
 - 2. The complex dynamics affecting a perpetrator, target, and witnesses to prohibited conduct;
 - 3. Research on prohibited conduct, including specific categories of students at risk for perpetrating or being the target or victim of bullying or other prohibited conduct in school;
 - 4. The incidence and nature of cyberbullying; and
 - 5. Internet safety and cyberbullying.

- C. The school district annually will provide education and information to students regarding bullying, including information regarding this school district policy prohibiting bullying, the harmful effects of bullying, and other applicable initiatives to prevent bullying and other prohibited conduct.
- D. The administration of the school district is directed to implement programs and other initiatives to prevent bullying, to respond to bullying in a manner that does not stigmatize the target or victim, and to make resources or referrals to resources available to targets or victims of bullying.
- E. The administration is encouraged to provide developmentally appropriate instruction and is directed to review programmatic instruction to determine if adjustments are necessary to help students identify and prevent or reduce bullying and other prohibited conduct, to value diversity in school and society, to develop and improve students' knowledge and skills for solving problems, managing conflict, engaging in civil discourse, and recognizing, responding to, and reporting bullying or other prohibited conduct, and to make effective prevention and intervention programs available to students.

The administration must establish strategies for creating a positive school climate and use evidence-based social-emotional learning to prevent and reduce discrimination and other improper conduct.

The administration is encouraged, to the extent practicable, to take such actions as it may deem appropriate to accomplish the following:

- 1. Engage all students in creating a safe and supportive school environment;
 - 2. Partner with parents and other community members to develop and implement prevention and intervention programs;
 - 3. Engage all students and adults in integrating education, intervention, and other remedial responses into the school environment;
 - 4. Train student bystanders to intervene in and report incidents of bullying and other prohibited conduct to the schools' primary contact person;
 - 5. Teach students to advocate for themselves and others;
 - 6. Prevent inappropriate referrals to special education of students who may engage in bullying or other prohibited conduct; and
 - 7. Foster student collaborations that, in turn, foster a safe and supportive school climate.
- F. The school district may implement violence prevention and character development education programs to prevent or reduce policy violations. Such programs may offer instruction on character education including, but not limited to, character qualities such as attentiveness, truthfulness, respect for authority, diligence, gratefulness, self-discipline, patience, forgiveness, respect for others, peacemaking, and resourcefulness.
 - G. The school district shall inform affected students and their parents of rights they may have under state and federal data practices laws to obtain access to data related to an incident and their right to contest the accuracy or completeness of the data. The school district may accomplish this requirement by inclusion of all or applicable parts of its

protection and privacy of pupil records policy (Policy 515) in the student handbook.

VIII. NOTICE

- A. The school district will give annual notice of this policy to students, parents or guardians, and staff, and this policy shall appear in the student handbook.
- B. This policy must be conspicuously posted throughout each school building, in the administrative offices of the school district, and in the office of each school.
- C. This policy must be distributed to each school district or school employee and independent contractor at the time of hiring or contracting.
- D. Notice of the rights and responsibilities of students and their parents under this policy must be included in the student discipline policy (Policy 506) distributed to parents at the beginning of each school year.
- E. This policy shall be available to all parents and other school community members in an electronic format in the language appearing on the school district's or a school's website.
- F. Each school must develop a process for discussing this policy with students, parents of students, independent contractors, and school employees.
- G. The school district shall provide an electronic copy of its most recently amended policy to the Minnesota Commissioner of Education.

IX. POLICY REVIEW

To the extent practicable, the school board shall, on a cycle consistent with other school district policies, review and revise this policy. The policy shall be made consistent with Minnesota Statutes, sections 121A.031 and 121A.0312 and other applicable law. Revisions shall be made in consultation with students, parents, and community organizations.

Legal References: Minn. Stat. Ch. 13 (Minnesota Government Data Practices Act)
Minn. Stat. § 120A.05, Subds. 9, 11, 13, and 17 (Definitions)
Minn. Stat. § 120B.232 (Character Development Education)
Minn. Stat. § 121A.03 (Model Policy)
Minn. Stat. § 121A.031 (School Student Bullying Policy)
Minn. Stat. § 121A.0312 (Malicious and Sadistic Conduct)
Minn. Stat. § 121A.0311 (Notice of the Rights and Responsibilities of Students and Parents under the Safe and Supportive Minnesota Schools Act)
Minn. Stat. §§ 121A.40-121A.56 (Pupil Fair Dismissal Act)
Minn. Stat. § 121A.69 (Hazing Policy)
Minn. Stat. Ch. 124E (Charter Schools)
Minn. Stat. Ch. 363A (Minnesota Human Rights Act)
20 U.S.C. § 1232g *et seq.* (Family Educational Rights and Privacy Act)
34 C.F.R. §§ 99.1 - 99.67 (Family Educational Rights and Privacy)

Cross References: MSBA/MASA Model Policy 403 (Discipline, Suspension, and Dismissal of School District Employees)
MSBA/MASA Model Policy 413 (Harassment and Violence)
MSBA/MASA Model Policy 414 (Mandated Reporting of Child Neglect or Physical or Sexual Abuse)
MSBA/MASA Model Policy 415 (Mandated Reporting of Maltreatment of Vulnerable Adults)

MSBA/MASA Model Policy 423 (Employee-Student Relationships)
MSBA/MASA Model Policy 501 (School Weapons Policy)
MSBA/MASA Model Policy 506 (Student Discipline)
MSBA/MASA Model Policy 507 (Corporal Punishment)
MSBA/MASA Model Policy 515 (Protection and Privacy of Pupil Records)
MSBA/MASA Model Policy 521 (Student Disability Nondiscrimination)
MSBA/MASA Model Policy 522 (Title IX Sex Nondiscrimination Policy)
MSBA/MASA Model Policy 524 (Internet Acceptable Use and Safety Policy)
MSBA/MASA Model Policy 525 (Violence Prevention)
MSBA/MASA Model Policy 526 (Hazing Prohibition)
MSBA/MASA Model Policy 529 (Staff Notification of Violent Behavior by Students)
MSBA/MASA Model Policy 709 (Student Transportation Safety Policy)
MSBA/MASA Model Policy 711 (Video Recording on School Buses)
MSBA/MASA Model Policy 712 (Video Surveillance Other Than on Buses)

525 VIOLENCE PREVENTION [APPLICABLE TO STUDENTS AND STAFF]

I. PURPOSE

The purpose of this policy is to recognize that violence has increased and to identify measures that the school district will take in an attempt to maintain a learning and working environment that is free from violent and disruptive behavior.

The school board is committed to promoting healthy human relationships and learning environments that are physically and psychologically safe for all members of the school community. It further believes that students are the first priority and they should be protected from physical or emotional harm during school activities and on school grounds, buses, or field trips while under school district supervision.

II. GENERAL STATEMENT OF POLICY

- A. The policy of the school district is to strictly enforce its weapons policy (Policy 501).
- B. The policy of the school district is to act promptly in investigating all acts, or formal or informal complaints, of violence and take appropriate disciplinary action against any student or staff member who is found to have violated this policy or any related policy.
- C. The administration will periodically review discipline policies and procedures, prepare revisions if necessary, and submit them to the school board for review and adoption.
- D. The school district will implement approved violence prevention strategies to promote safe and secure learning environments, to diminish violence in our schools, and to aid in the protection of children whose health or welfare may be jeopardized through acts of violence.

III. IMPLEMENTATION OF POLICY

- A. The school board will review and approve policies to prevent and address violence in our schools. The superintendent or designee will develop procedures to effectively implement the school weapons and violence prevention policies. It shall be incumbent on all students and staff to observe all policies and report violations to the school administration.
- B. The school board and administration will inform staff and students annually of policies and procedures related to violence prevention and weapons.
- C. The school district will act promptly to investigate all acts and formal and informal complaints of violence and take appropriate disciplinary action against any student or staff member who is found to have violated this policy or any related policy.
- D. The consequences set forth in the school weapons policy (Policy 501) will be imposed upon any student or nonstudent who possesses, uses or distributes a weapon when in a school location.
- E. The consequences set forth in the school hazing policy (Policy 526) will be imposed upon any student or staff member who commits an act against a student or staff member; or coerces a student or staff member into committing an act, that creates a substantial risk of harm to a person in order for the student or staff member to be initiated into or affiliated with an organization, or for any other purpose.

- F. Students who engage in assault or violent behavior will be removed from the classroom immediately and for a period of time deemed appropriate by the principal, in consultation with the teacher, pursuant to the student discipline policy (Policy 506).
- G. Students with disabilities may be expelled for behavior unrelated to their disabilities, subject to the procedural safeguards required by the Individuals with Disabilities Education Act (IDEA), Section 504 of the Rehabilitation Act of 1973, and the Pupil Fair Dismissal Act.
- H. Procedures will be developed for the referral of any person in violation of this policy or the weapons policy to the local law enforcement agency in accordance with Minnesota Statutes section 121A.05.
- I. Students who wear objectionable emblems, signs, words, objects, or pictures on clothing communicating a message that is racist, sexist, or otherwise derogatory to a protected minority group or which connotes gang membership or that approves, advances, or provokes any form of religious, racial, or sexual harassment or violence against other individuals as defined in the harassment and violence policy (Policy 413) will be subject to the procedures set forth in the student dress and appearance policy (Policy 504). "Gang" as used in this policy means any ongoing organization, association, or group of three or more persons, whether formal or informal, having as one of its primary activities the commission of one or more criminal acts, which has an identifiable name or identifying sign or symbol, and whose members individually or collectively engage in or whose members engaged in a pattern of criminal gang activity. A "pattern of gang activity" means the commission, attempt to commit, conspiring to commit, or solicitation of two or more criminal acts, provided the criminal acts were committed on separate dates or by two or more persons who are members of or belong to the same criminal street gang.
- J. This policy is not intended to abridge the rights of students to express political, religious, philosophical, or similar opinions by wearing apparel on which such messages are stated. Such messages are acceptable as long as they are not lewd, vulgar, obscene, defamatory, profane, denote gang affiliation, advocate harassment or violence against others, are likely to disrupt the education process, or cause others to react in a violent or illegal manner (Policy 504).

IV. PREVENTION STRATEGIES

The school district has adopted and will implement the following prevention strategies to promote safe and secure learning environments, to diminish violence in our schools, and to aid in the protection of children whose health or welfare may be jeopardized through acts of violence.

[Note: The school board can adopt any of the prevention strategies that it intends to implement in its schools, including some or all of the following sample strategies.]

- A. Adopt a district crisis management policy to address potential violent crisis situations in the district.
- B. Provide training in recognition, prevention, and safe responses to violence and development of a positive school climate.
- C. In-service training for personnel in aspects of reporting, visibility, and supervision as deterrents to violence.
- D. In-service training for personnel and school board members by experts familiar with sexual abuse, domestic violence, and personal safety issues on the following: helping students identify violence in the family and the community so that students may learn to resolve conflicts in effective, nonviolent ways; responding to a disclosure of child sexual abuse in a supportive, appropriate manner; and/or complying with mandatory

reporting requirements under the Maltreatment of Minors Reporting Act.

- E. Promote student safety responsibility by encouraging the reporting of suspicious individuals and unusual activities on school grounds.
- F. Establish a Strategic Planning committee that explores ways of teaching students violence prevention strategies, law-related education, and character/values education (universal values, e.g., honesty, personal responsibility, self-discipline, cooperation, and respect for others).
- G. Establish clear school rules that prevent and deter violence.
- H. Develop cross-cultural awareness programs to unify students of all cultures and backgrounds, to develop mutual respect and understanding of shared experiences and values among students, and to promote the message of inclusion.
- I. Establish conflict resolution training, conflict management, or peer mediation programs for staff and students to teach conservative approaches to settling disputes.
- J. Develop curriculum that teaches social skills such as maintaining self-control, building communications skills, forming friendships, resisting peer pressure, being appropriately assertive, forming positive relationships with adults, and resolving conflict in nonviolent ways.
- K. Develop curriculum that teaches critical viewing and listening skills in analyzing mass media to recognize stereotypes, distinguish fact from fantasy, and identify differences in behavior and values that conflict with their own.
- L. Develop student safety forums that both inform and elicit students' ideas about particular safety problems in the building.
- M. Develop a student photo or name identification system for quick identification of the student in case of emergency.
- N. Develop a staff photo or name identification system using identification badges for quick identification of unauthorized people on campus.
- O. Require all visitors to check-in the main office upon their arrival and state their business at the school. A visitor badge may be issued for easy identification that the visitor is authorized to be present in the school building.
- P. Develop curriculum on character education including, but not limited to, character qualities such as attentiveness, truthfulness, respect for authority, diligence, gratefulness, self-discipline, patience, forgiveness, respect for others, peacemaking, and resourcefulness.
- Q. Develop curriculum on child sexual abuse prevention for students, including age-appropriate instruction on recognizing sexual abuse and assault, boundary violations, and ways offenders groom or desensitize victims, as well as strategies to promote disclosure, reduce self-blame, and mobilize bystanders. The curriculum may be created in consultation with federal, state, and local agencies and community-based organizations, including the Child Welfare Information Gateway website maintained by the United States Department of Health and Human Services, to identify research-based tools, curricula, and programs to prevent child sexual abuse.
- R. Provide training to all school personnel on recognizing and preventing sexual abuse and sexual violence which may include training on mandatory reporting requirements provided on the Department of Education's website and reviewing the Code of Ethics for Minnesota Teachers.

V. STUDENT SUPPORT

- A. Students will have access to school-based student service professionals, when available, including counselors, nurses, social workers, and psychologists who are knowledgeable in methods to assist students with violence prevention and intervention.
- B. Students will be apprised of school board policies designed to protect their personal safety.
- C. Students will be provided with information as to school district and building rules regarding weapons and violence.
- D. Students will be informed of resources for violence prevention and proper reporting.

VI. PERSONNEL

- A. School district personnel shall comply with the school weapons policy (Policy 501) and the school hazing policy (Policy 526).
- B. School district personnel shall be knowledgeable of violence prevention policies and report any violation to school administration immediately. School district personnel will be informed annually as to school district and building rules regarding weapons and violence prevention.
- C. School district personnel or agents of the school district shall not engage in emotionally abusive acts including malicious shouting, ridicule, and/or threats or other forms of corporal punishment (Policy 507).

Legal References: Minn. Stat. § 13.43, Subd. 16 (Personnel Data)
Minn. Stat. § 120B.22 (Violence Prevention Education)
Minn. Stat. § 120B.232 (Character Development Education)
Minn. Stat. § 120B.234 (Child Sexual Abuse Prevention Education)
Minn. Stat. § 121A.035 (Crisis Management Policy)
Minn. Stat. § 121A.05 (Policy to Refer Firearms Possessor)
Minn. Stat. §§ 121A.40-121A.56 (Pupil Fair Dismissal Act)
Minn. Stat. § 121A.44 (Expulsion for Possession of Firearm)
Minn. Stat. § 121A.61 (Discipline and Removal of Students from Class)
Minn. Stat. § 121A.64 (Notification)
Minn. Stat. § 121A.69 (Hazing Policy)
Minn. Stat. § 181.967, Subd. 5 (School District Disclosure of Violence or Inappropriate Sexual Contact)

18 U.S.C. § 921 (Definition of Firearm)
20 U.S.C. § 1400 *et seq.* (Individuals with Disabilities Education Act)
29 U.S.C. § 794 *et seq.* (Rehabilitation Act of 1973, § 504)
Tinker v. Des Moines Indep. Sch. Dist., 393 U.S. 503, 89 S.Ct. 733, 21 L.Ed.2d 731 (1969)
Stephenson v. Davenport Cmty. Sch. Dist., 110 F.3d 1303 (8th Cir. 1997)
McIntire v. Bethel School, 804 F.Supp. 1415, 78 Educ. L.Rep. 828 (W.D. Okla. 1992)
Olesen v. Board of Educ. of Sch. Dist. No. 228, 676 F.Supp. 820, 44 Educ. L.Rep. 205 (N.D. Ill. 1987)

Cross References: *Royalton* Policy 413 (Harassment and Violence)
 Royalton Policy 501 (School Weapons Policy)
 Royalton Policy 504 (Student Dress and Appearance) MSBA/MASA
 Royalton Policy 506 (Student Discipline)
 Royalton Policy 507 (Corporal Punishment)
 Royalton Policy 514 (Bullying Prohibition Policy)
 Royalton Policy 526 (Hazing Prohibition)
 Royalton Policy 529 (Staff Notification of Violent Behavior by Students)

526 HAZING PROHIBITION

I. PURPOSE

The purpose of this policy is to maintain a safe learning environment for students and staff that is free from hazing. Hazing activities of any type are inconsistent with the educational goals of the school district and are prohibited at all times.

II. GENERAL STATEMENT OF POLICY

- A. No student, teacher, administrator, volunteer, contractor, or other employee of the school district shall plan, direct, encourage, aid, or engage in hazing.
- B. No teacher, administrator, volunteer, contractor, or other employee of the school district shall permit, condone, or tolerate hazing.
- C. Apparent permission or consent by a person being hazed does not lessen the prohibitions contained in this policy.
- D. Retaliation against a victim, good faith reporter, or a witness of hazing is prohibited.
- E. False accusations or reports of hazing against a student, teacher, administrator, volunteer, contractor, or other employee are prohibited.
- F. A person who engages in an act of hazing, reprisal, retaliation, or false reporting of hazing or permits, condones, or tolerates hazing shall be subject to discipline or other remedial responses for that act in accordance with the school district's policies and procedures.

Consequences for students who commit, tolerate, or are a party to prohibited acts of hazing may range from remedial responses or positive behavioral interventions up to and including suspension and/or expulsion.

Consequences for employees who permit, condone, or tolerate hazing or engage in an act of reprisal or intentional false reporting of hazing may result in disciplinary action up to and including termination or discharge.

Consequences for other individuals engaging in prohibited acts of hazing may include, but not be limited to, exclusion from school district property and events and/or termination of services and/or contracts.

- G. This policy applies to hazing that occurs during and after school hours, on or off school premises or property, at school functions or activities, or on school transportation.
- H. A person who engages in an act that violates school policy or law in order to be initiated into or affiliated with a student organization shall be subject to discipline for that act.
- I. The school district will act to investigate all complaints of hazing and will discipline or take appropriate action against any student, teacher, administrator, volunteer, contractor, or other employee of the school district who is found to have violated this policy.

III. DEFINITIONS

- A. "Hazing" means committing an act against a student, or coercing a student into committing an act, that creates a substantial risk of harm to a person, in order for the student to be initiated into or affiliated with a student organization, or for any other school-related purpose. The term hazing includes, but is not limited to:
1. Any type of physical brutality such as whipping, beating, striking, branding, electronic shocking, or placing a harmful substance on the body.
 2. Any type of physical activity such as sleep deprivation, exposure to weather, confinement in a restricted area, calisthenics, or other activity that subjects the student to an unreasonable risk of harm or that adversely affects the mental or physical health or safety of the student.
 3. Any activity involving the consumption of any alcoholic beverage, drug, tobacco product, or any other food, liquid, or substance that subjects the student to an unreasonable risk of harm or that adversely affects the mental or physical health or safety of the student.
 4. Any activity that intimidates or threatens the student with ostracism, that subjects a student to extreme mental stress, embarrassment, shame, or humiliation, that adversely affects the mental health or dignity of the student or discourages the student from remaining in school.
- Any activity that causes or requires the student to perform a task that involves violation of state or federal law or of school district policies or regulations.
- B. "Immediately" means as soon as possible but in no event longer than 24 hours.
- C. "On school premises or school district property, or at school functions or activities, or on school transportation" means all school district buildings, school grounds, and school property or property immediately adjacent to school grounds, school bus stops, school buses, school vehicles, school contracted vehicles, or any other vehicles approved for school district purposes, the area of entrance or departure from school grounds, premises, or events, and all school-related functions, school-sponsored activities, events, or trips. School district property also may mean a student's walking route to or from school for purposes of attending school or school-related functions, activities, or events. While prohibiting hazing at these locations and events, the school district does not represent that it will provide supervision or assume liability at these locations and events.
- D. "Remedial response" means a measure to stop and correct hazing, prevent hazing from recurring, and protect, support, and intervene on behalf of a student who is the target or victim of hazing.
- E. "Student" means a student enrolled in a public school or a charter school.
- F. "Student organization" means a group, club, or organization having students as its primary members or participants. It includes grade levels, classes, teams, activities, or particular school events. A student organization does not have to be an official school organization to come within the terms of this definition.

IV. REPORTING PROCEDURES

- A. Any person who believes he or she has been the target or victim of hazing or any person with knowledge or belief of conduct which may constitute hazing shall report the alleged acts immediately to an appropriate school district official designated by this policy. A person may report hazing anonymously. However, the school district may

not rely solely on an anonymous report to determine discipline or other remedial responses.

- B. The school district encourages the reporting party to use the report form available from the principal or building supervisor of each building or available from the school district office, but oral reports shall be considered complaints as well. The Harassment, Violence and Hazing Report Form can be found in the Middle/High School Office or online.

The building principal, the principal's designee, or the building supervisor (hereinafter the "building report taker") is the person responsible for receiving reports of hazing at the building level. Any adult school district personnel who receives a report of hazing prohibited by this policy shall inform the building report taker immediately. Any person may report hazing directly to a school district human rights officer or to the superintendent. If the complaint involves the building report taker, the complaint shall be made or filed directly with the superintendent or the school district human rights officer by the reporting party or complainant.

The building report taker shall ensure that this policy and its procedures, practices, consequences, and sanctions are fairly and fully implemented and shall serve as a primary contact on policy and procedural matters.

- C. A teacher, administrator, volunteer, contractor, and other school employees shall be particularly alert to possible situations, circumstances, or events which might include hazing. Any such person who witnesses, observes, receives a report of, or has other knowledge or belief of conduct which may constitute hazing shall make reasonable efforts to address and resolve the hazing and shall inform the building report taker immediately. School district personnel who fail to inform the building report taker of conduct that may constitute hazing or who fail to make reasonable efforts to address and resolve the hazing in a timely manner may be subject to disciplinary action.
- D. Submission of a good faith complaint or report of hazing will not affect the complainant or reporter's future employment, grades, or work assignments, or educational or work environment.
- E. Reports of hazing are classified as private educational and/or personnel data and/or confidential investigative data and will not be disclosed except as permitted by law. The building report taker, in conjunction with the responsible authority, shall be responsible for keeping and regulating access to any report of hazing and the record of any resulting investigation.
- F. The school district will respect the privacy of the complainant(s), the individual(s) against whom the complaint is filed, and the witnesses as much as possible, consistent with the school district's legal obligations to investigate, to take appropriate action, and to comply with any discovery or disclosure obligations.

V. SCHOOL DISTRICT ACTION

- A. Within three (3) days of the receipt of a complaint or report of hazing, the school district shall undertake or authorize an investigation by school district officials or a third party designated by the school district.
- B. The building report taker or other appropriate school district officials may take immediate steps, at their discretion, to protect the target or victim of the hazing, the complainant, the reporter, and students, or others pending completion of an investigation of alleged hazing prohibited by this policy.
- C. The alleged perpetrator of the hazing shall be allowed the opportunity to present a defense during the investigation or prior to the imposition of discipline or other remedial responses.

- D. Upon completion of an investigation that determines hazing has occurred, the school district will take appropriate action. Such action may include, but is not limited to, warning, suspension, exclusion, expulsion, transfer, remediation, termination, or discharge. Disciplinary consequences will be sufficiently severe to try to deter violations and to appropriately discipline prohibited behavior. School district action taken for violation of this policy will be consistent with the requirements of applicable collective bargaining agreements; applicable statutory authority, including the Minnesota Pupil Fair Dismissal Act; and applicable school district policies, and regulations.
- E. The school district is not authorized to disclose to a victim private educational or personnel data regarding an alleged perpetrator who is a student or employee of the school district. School officials will notify the parent(s) or guardian(s) of students who are targets or victims of hazing and the parent(s) or guardian(s) of alleged perpetrators of hazing who have been involved in a reported and confirmed hazing incident of the remedial or disciplinary action taken, to the extent permitted by law.
- F. In order to prevent or to respond to hazing committed by or directed against a child with a disability, the school district shall, where determined appropriate by the child's individualized education program (IEP) team or Section 504 team, allow the child's IEP or Section 504 plan to be drafted to address the skills and proficiencies the child needs as a result of the child's disability to allow the child to respond to or not to engage in hazing.

VI. RETALIATION OR REPRISAL

The school district will discipline or take appropriate action against any student, teacher, administrator, volunteer, contractor, or other employee of the school district who commits an act of reprisal or who retaliates against any person who asserts, alleges, or makes a good faith report of alleged hazing, who provides information about hazing, who testifies, assists, or participates in an investigation of alleged hazing, or who testifies, assists, or participates in a proceeding or hearing relating to such hazing. Retaliation includes, but is not limited to, any form of intimidation, reprisal, harassment, or intentional disparate treatment. Disciplinary consequences will be sufficiently severe to deter violations and to appropriately discipline the individual(s) who engaged in the prohibited conduct. Remedial responses to the prohibited conduct shall be tailored to the particular incident and nature of the conduct.

VII. DISSEMINATION OF POLICY

- A. This policy shall appear in each school's student handbook and in each school's building and staff handbooks.
- B. The school district will develop a method of discussing this policy with students and employees.

Legal References: Minn. Stat. § 121A.031 (School Student Bullying Policy)
Minn. Stat. § 121A.0311 (Notice of the Rights and Responsibilities of Students and Parents Under the Safe and Supportive Minnesota Schools Act)
Minn. Stat. § 121A.40-121A.56 (Pupil Fair Dismissal Act)
Minn. Stat. § 121A.69 (Hazing Policy)

Cross References: Royalton School District Policy 403 (Discipline, Suspension, and Dismissal of School District Employees)
Royalton School District Policy 413 (Harassment and Violence)
Royalton School District Policy 506 (Student Discipline)
Royalton School District Policy 514 (Bullying Prohibition Policy)
Royalton School District Policy 525 (Violence Prevention [Applicable to Students and Staff])



ROYALTON PUBLIC SCHOOL DISTRICT #485
HARASSMENT, VIOLENCE & HAZING REPORT FORM



General Statement of Policy Prohibiting Harassment, Violence, and Hazing

ISD #485 maintains a firm policy prohibiting all forms of discrimination. Harassment or violence against students or employees or groups of students or employees on the basis of race, color, creed, religion, national origin, sex, age, marital status, familial status, status with regard to public assistance, sexual orientation, including gender identity and expression, or disability is strictly prohibited. All persons are to be treated with respect and dignity. Harassment or violence on the basis of race, color, creed, religion, national origin, sex, age, marital status, familial status, status with regard to public assistance, sexual orientation, including gender identity and expression, or disability by any pupil, teacher, administrator, or other school personnel, which create an intimidating, hostile, or offensive environment will not be tolerated under any circumstances.

Complainant _____

Home Address _____

Work Address _____

Home Phone _____ Work Phone _____

Date of Alleged Incident(s) _____

Basis of Alleged Harassment/Violence - circle as appropriate: race \ color \ creed \ religion \ national origin \ sex \ age \ marital status \ familial status \ status with regard to public assistance \ sexual orientation, including gender identity and expression \ disability

Name of person you believe harassed or was violent toward you or another person or group.

If the alleged harassment or violence was toward another person or group, identify that person or group. _____

Describe the incident(s) as clearly as possible, including such things as: what force, if any, was used; any verbal statements (i.e., threats, requests, demands, etc.); what, if any, physical contact was involved; etc. (Attach additional pages if necessary.) _____



ROYALTON PUBLIC SCHOOL DISTRICT #485
HARASSMENT, VIOLENCE & HAZING REPORT FORM



Where and when did the incident(s) occur? _____

List any witnesses that were present _____

This complaint is filed based on my honest belief that _____ has harassed or has been violent to me or to another person or group. I hereby certify that the information I have provided in this complaint is true, correct, and complete to the best of my knowledge and belief.

(Complainant Signature)

(Date)

Received by _____

(Date)

529 STAFF NOTIFICATION OF VIOLENT BEHAVIOR BY STUDENTS

I. PURPOSE

In an effort to provide a safe school environment, the assigned classroom teacher and certain staff members should know whether a student to be placed in the classroom has a history of violent behavior. Additionally, decisions should be made regarding how to manage such a student.

The purpose of this policy is to address the circumstances in which data should be provided to classroom teachers and other school staff members about students with a history of violent behavior and to establish a procedure for notifying staff regarding the placement of students with a history of violent behavior.

II. GENERAL STATEMENT OF POLICY

- A. Any staff member or other employee of the school district who obtains or possesses substantiated information concerning a student in the building with a history of violent behavior shall immediately report said information to the principal of the building in which the student attends school.
- B. The administration will meet with the assigned classroom teacher and other appropriate staff members for the purpose of notifying and determining how staff will manage such student.
- C. Only staff members who have a legitimate educational interest in the information will receive notification.

III. DEFINITIONS

For purposes of this policy, the following terms have the meaning given them.

A. Administration

"Administration" means the superintendent, building principal, or other designee.

B. Classroom Teacher

"Classroom teacher" means the instructional personnel responsible for the course or room to which a student is assigned at any given time, including a substitute hired in place of the classroom teacher.

C. History of Violent Behavior

- 1. A student will be considered to have a history of violent behavior if incident(s) of violence, including any documented physical assault of a school district employee by the student, have occurred during the current or previous school year.
- 2. If a student has an incident of violence during the current or previous school year, that incident and all other past related or similar incidents of violence will be reported.

D. Incident(s) of Violence

"Incident(s) of violence" means willful conduct in which a student endangers or causes

physical injury to the student, other students, a school district employee, or surrounding person(s) or endangers or causes significant damage to school district property, regardless of whether related to a disability or whether discipline was imposed.

E. Legitimate Educational Interest

"Legitimate educational interest" includes interest directly related to classroom instruction, teaching, student achievement and progress, discipline of a student, student health and welfare, and the ability to respond to a request for educational data. It includes a person's need to know in order to:

1. Perform an administrative task required in the school or the employee's contract or position description approved by the school board;
2. Perform a supervisory or instructional task directly related to the student's education; or
3. Perform a service or benefit for the student or the student's family such as health care, counseling, student job placement, or student financial aid.
4. Perform a task directly related to responding to a request for data.

F. School Staff Member

"School staff member" includes:

1. A person duly elected to the school board;
2. A person employed by the school board in an administrative, supervisory, instructional, or other professional position;
3. A person employed by the school board as a temporary substitute in a professional position for the period of his or her performance as a substitute; and
4. A person employed by, or under contract to, the school board to perform a special task such as a secretary, a clerk, a public information officer or data practices compliance official, an attorney, or an auditor for the period of his or her performance as an employee or contractor.

IV. PROCEDURE FOR STAFF NOTIFICATION OF STUDENTS WITH VIOLENT BEHAVIOR

A. Reports of Violent Behavior

Any staff member or other employee of the school district who becomes aware of any information regarding the violent behavior of an enrolling student or any student enrolled in the school district shall immediately report the information to the building principal where the student is enrolled or seeks to enroll.

B. Recipients of Notice

Each classroom teacher of a student with a history of violent behavior (see Section III.C., above) will receive written notification from the administration prior to placement of the student in the teacher's classroom. In addition, written notice will be

given by the administration to other school staff members who have a legitimate educational interest, as defined in this policy, when a student with a history of violent behavior is placed in a teacher's classroom. The administration will provide notice to anyone substituting for the classroom teacher or school staff member, who has received notice under this policy, that the substitute will be overseeing a student with a history of violent behavior.

The administration may provide other school district employees or individuals outside of the school district with information regarding a student, including information regarding a student's history of violent behavior, in accordance with Policy 515, Protection and Privacy of Pupil Records.

C. Determination of Who Receives Notice

The determination of which classroom teachers and school staff members have a legitimate educational interest in information regarding a student with a history of violent behavior will be made by either: (1) the school district's Responsible Authority appointed by the school board under the Minnesota Government Data Practices Act or (2) the administration. In the event the administration makes this determination, the Responsible Authority will provide guidance to the administration as to what data will be shared.

D. Form of Written Notice

The notice given to classroom teachers and school staff members will be in writing and will include the following:

1. Name of the student;
2. Date of notice;
3. Notification that the student has been identified as a student with a history of violent behavior as defined in Section III. of this policy; and
4. Reminder of the private nature of the data provided.

E. Record of Notice

1. The administration will retain a copy of the notice or other documentation provided to classroom teachers and school staff members notified under this section.
2. Retention of the written notice or other documentation provided to classroom teachers and school staff members is governed by the approved Records Retention Schedule.

F. Meetings Regarding Students with a History of Violent Behavior

1. If the administration determines, in his or her discretion, that the classroom teacher and/or school staff members with a legitimate educational interest in such data reasonably require access to the details regarding a student's history of violent behavior for purposes of school safety and/or intervention services for the student, the administration also may convene a meeting to share and discuss such data.
2. The persons present at the meeting may have access to the data described in Section IV.D., above.

G. Law Enforcement Reports

Staff members will be provided with notice of disposition orders or law enforcement reports received by the school district in accordance with Policy 515, Protection and Privacy of Pupil Records. Where appropriate, information obtained from disposition orders or law enforcement reports also may be included in a Notification of Violent Behavior.

V. MAINTENANCE AND TRANSFER OF RECORDS

A report, notice, or documentation pertaining to a student with a history of violent behavior are educational records of a student and will be retained, maintained, and transferred to a school or school district in which a student seeks to enroll in accordance with Policy 515, Protection and Privacy of Pupil Records.

VI. PARENTAL NOTICE

- A. The administration will notify parents annually that the school district gives classroom teachers and other school staff members notice about students' history of violent behavior.
- B. Prior to providing the written notice of a student's violent behavior to classroom teachers and/or school staff members, the administration will inform the student's parent or guardian that such notice will be provided.
- C. Parents will be given notice that they have the right to review and challenge records or data, including the data documenting the history of violent behavior, in accordance with Policy 515, Protection and Privacy of Pupil Records.

VII. TRAINING NEEDS

Representatives of the school board and representatives of the teachers will discuss the needs of students and staff. The parties may discuss necessary training which may include training on conflict resolution and positive behavior interventions and may discuss necessary intervention services such as student behavioral assessments.

Legal References: Minn. Stat. Ch. 13 (Minnesota Government Data Practices Act)
Minn. Stat. § 120A.22, Subd. 7 (Compulsory Instruction))
Minn. Stat. § 121A.45 (Grounds for Dismissal)
Minn. Stat. § 121A.64 (Notification; Teachers' Legitimate Educational Interest)
Minn. Stat. § 121A.75 (Receipt of Records; Sharing)
Minn. Rules Parts 1205.0100-1205.2000 (Data Practices)
20 U.S.C. § 1232g (Family Educational Rights and Privacy Act)
34 C.F.R. §§ 99.1-99.67 (Rules Implementing FERPA)
Minn. Laws 2003, 1st Sp., Ch. 9, Art. 2, § 53

Cross References: Royalton School District Policy 515 (Protection and Privacy of Pupil Records)